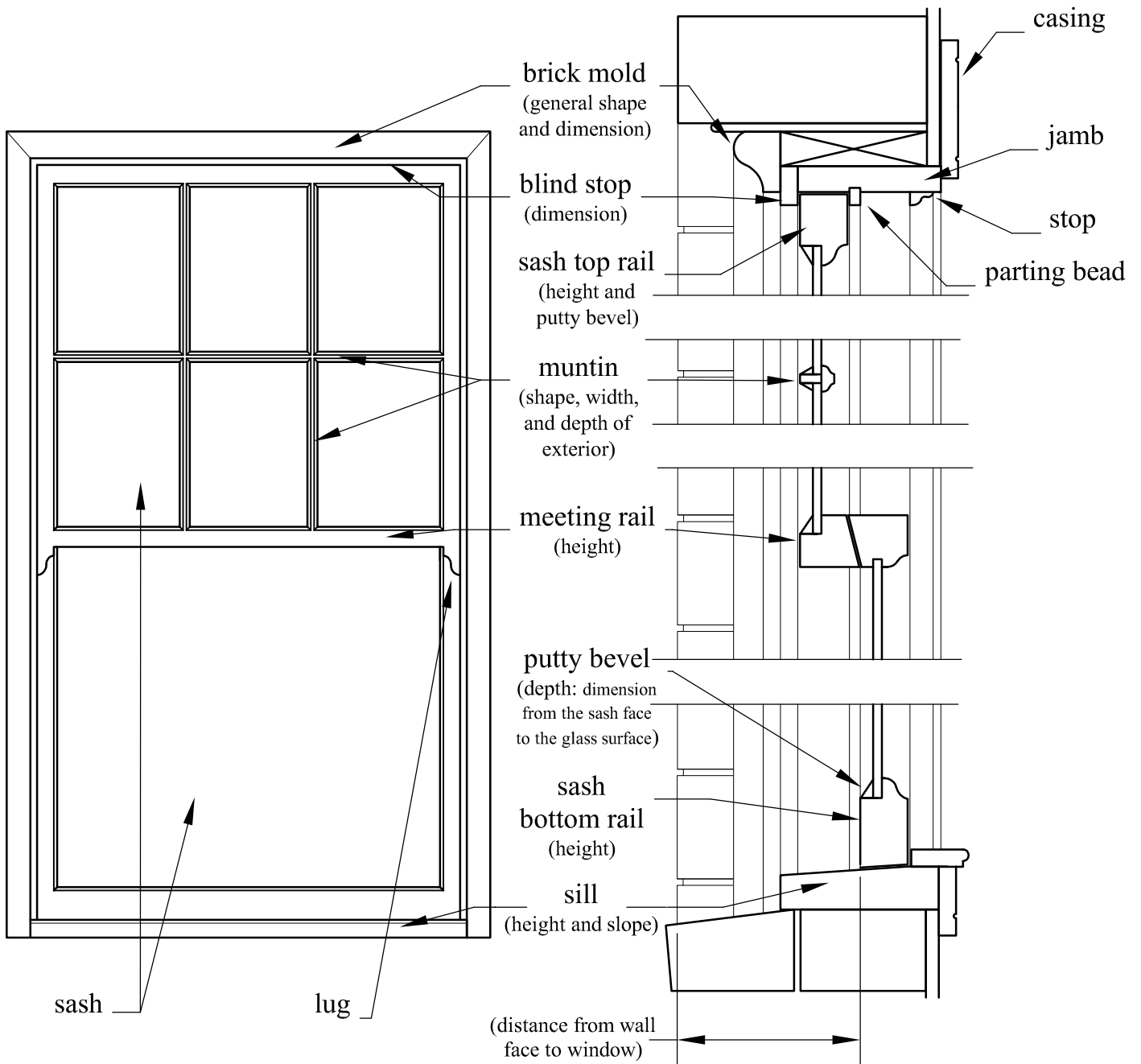


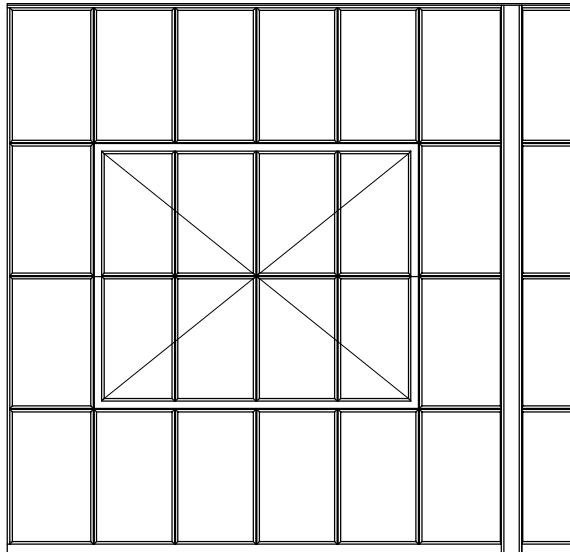
Wood Windows

The drawings below show the details required to document existing historic windows and any replacement windows. The specific information needed about each element is noted in parentheses. Note that the section drawing on the right shows the relationship of the window sash to the exterior wall plane.



Industrial Steel Windows

These drawings show the details required to document existing historic windows and any replacement windows. The specific information needed about each element is noted in parentheses. For replacement windows, be sure to show not only the typical muntin dimensions, but also any variations within the unit, such as wider pieces that support the operable sash.



Elevation

perimeter frame
(width)

top frame of
operating sash
(profile and width)

muntin
(shape, width, and
depth of exterior)

bottom frame of
operating sash
(profile and width)

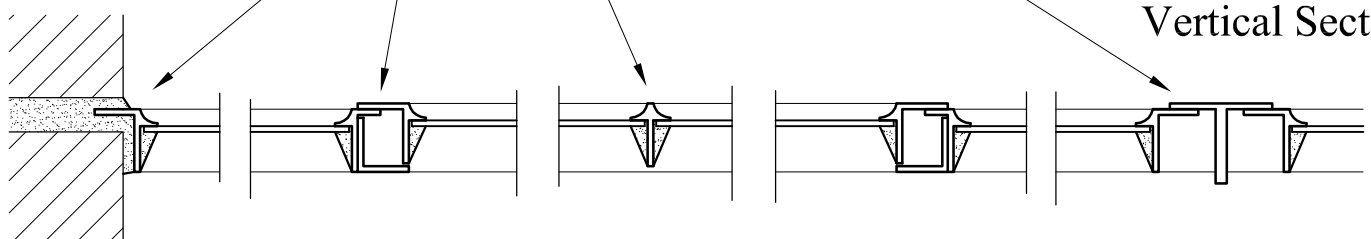
(distance from wall
face to window)

mullion
(profile & width)

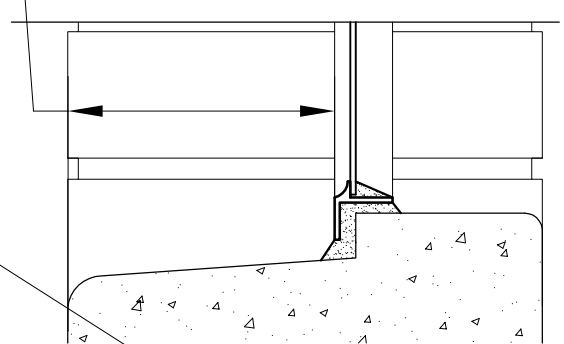
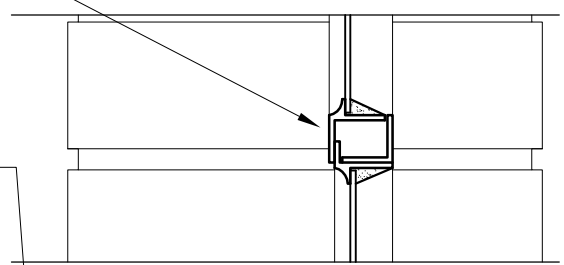
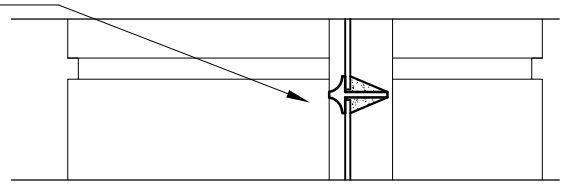
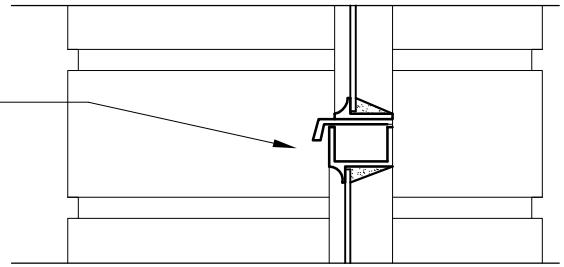
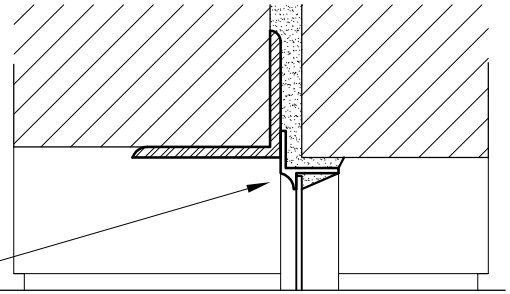
muntin
(shape, width, and depth of exterior)

operating sash & frame
(profile and width)

perimeter frame
(width)



Horizontal Section



Vertical Section