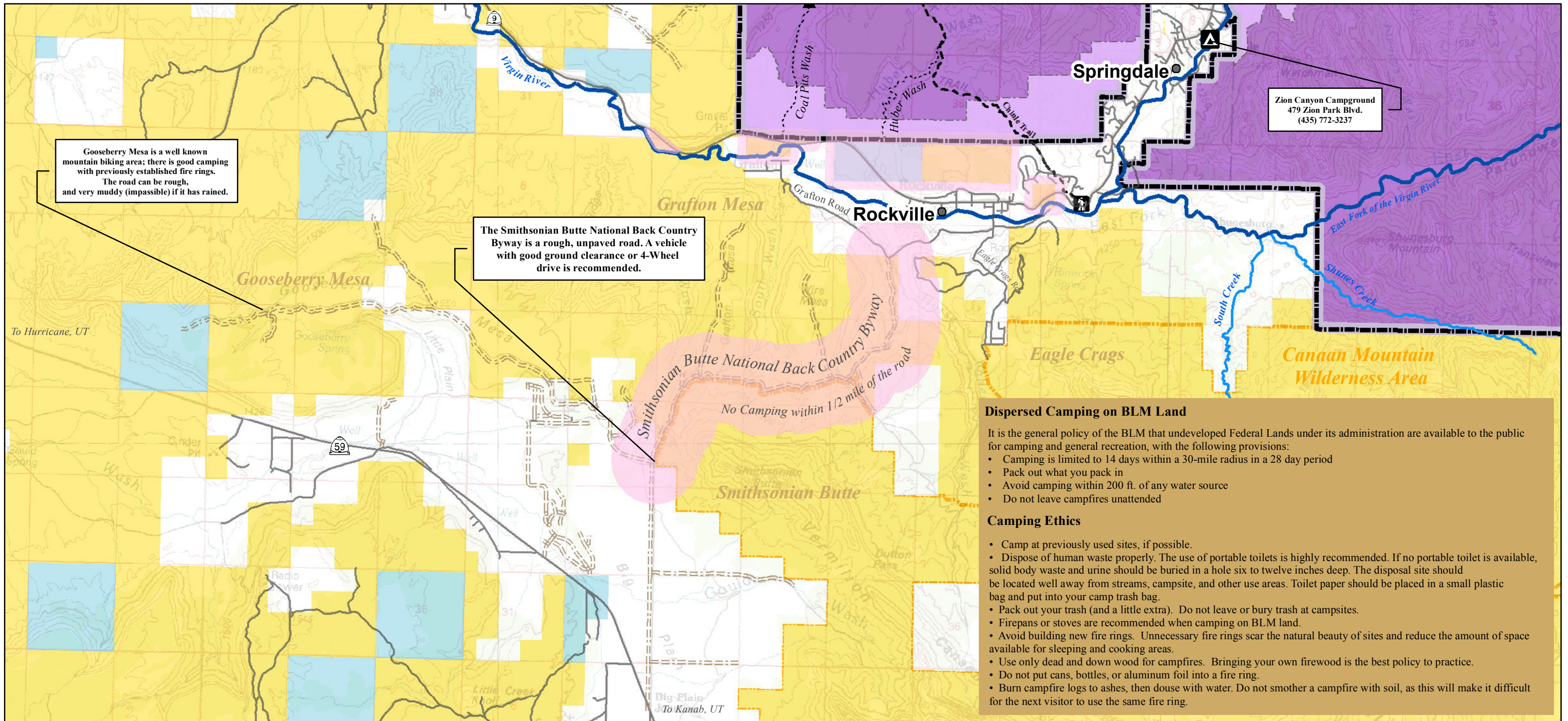


Camping Opportunities South of Highway 9



Dispersed Camping on BLM Land

It is the general policy of the BLM that undeveloped Federal Lands under its administration are available to the public for camping and general recreation, with the following provisions:

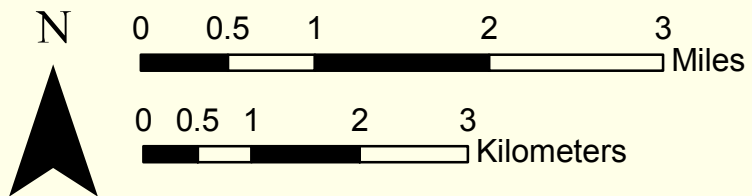
- Camping is limited to 14 days within a 30-mile radius in a 28 day period
- Pack out what you pack in
- Avoid camping within 200 ft. of any water source
- Do not leave campfires unattended

Camping Ethics

- Camp at previously used sites, if possible.
- Dispose of human waste properly. The use of portable toilets is highly recommended. If no portable toilet is available, solid body waste and urine should be buried in a hole six to twelve inches deep. The disposal site should be located well away from streams, campsites, and other use areas. Toilet paper should be placed in a small plastic bag and put into your camp trash bag.
- Pack out your trash (and a little extra). Do not leave or bury trash at campsites.
- Firepans or stoves are recommended when camping on BLM land.
- Avoid building new fire rings. Unnecessary fire rings scar the natural beauty of sites and reduce the amount of space available for sleeping and cooking areas.
- Use only dead and down wood for campfires. Bringing your own firewood is the best policy to practice.
- Do not put cans, bottles, or aluminum foil into a fire ring.
- Burn campfire logs to ashes, then douse with water. Do not smother a campfire with soil, as this will make it difficult for the next visitor to use the same fire ring.

Allowed Camping

- Dispersed camping is allowed on all BLM Land and BLM Wilderness unless otherwise noted
- Within Zion, camping is allowed in designated campgrounds or wilderness with a permit. Permits can be obtained at the Wilderness Office at the Zion Visitor Center
- Please be respectful of private landowners- DO NOT camp on private property



- | | | |
|-----------------|----------------------------------|---------------------------------|
| --- Foot Trail | Yellow BLM | Bureau of Land Management (BLM) |
| ... Route | Orange BLM Wilderness | BLM Wilderness Areas |
| ▲ Campground | Pink No Camping | No Camping Areas |
| ▲ Trailhead | Light Blue State | State |
| — Paved Road | White Private | Private |
| - - - Dirt Road | Purple Zion Wilderness | Zion Wilderness |
| ● City | Light Purple Zion Non Wilderness | Zion Non Wilderness |
| | Black Zion Boundary | Zion Boundary |

