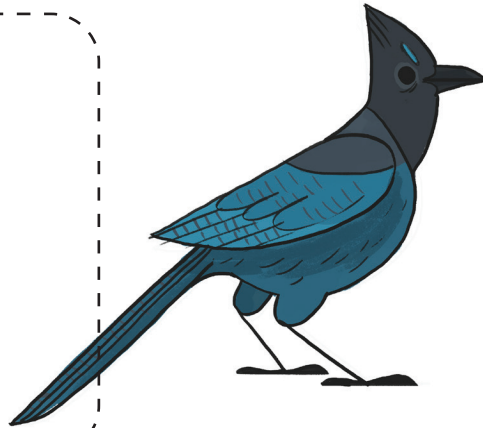
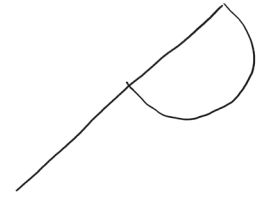


**DRAW  
WITH A  
PARK RANGER**



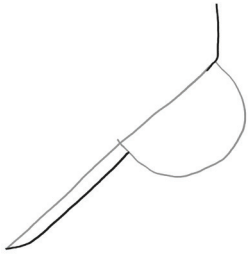
Let's draw this Steller's jay!

**1**



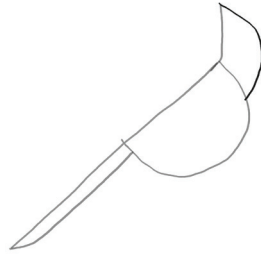
Start with a slanted "P" shape. Try to draw lightly for now. We're going to draw over this at the end!

**2**



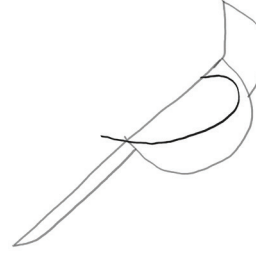
Extend a line straight up for the back of the head. Draw a curved line for the bottom of the tail.

**3**



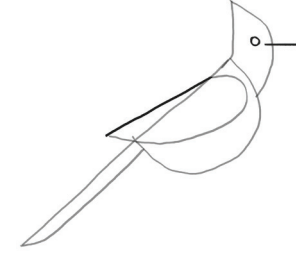
Draw a backwards "C" from the top of the head to the jay's chest.

**4**



Draw a big curve for the bird's wing, starting at the top, down the side of its body, and then backward toward its tail.

**5**



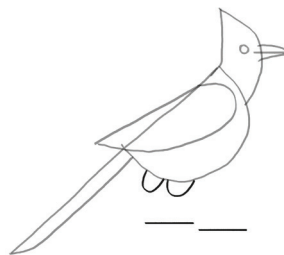
Draw a line to complete the top of the wing. Then give your jay a round eye and a straight line for its mouth.

**6**



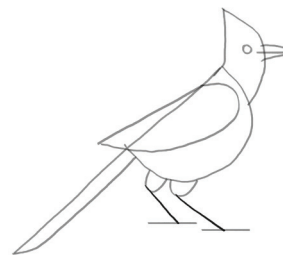
Draw curved lines for the top and bottom of the jay's beak!

**7**



Draw two small circles underneath the jay. Then make two straight lines beneath it for its feet!

**8**



Draw the jay's legs!

**9**



Draw over your light lines. Give your bird some feathers and other details, and color it in if you'd like!