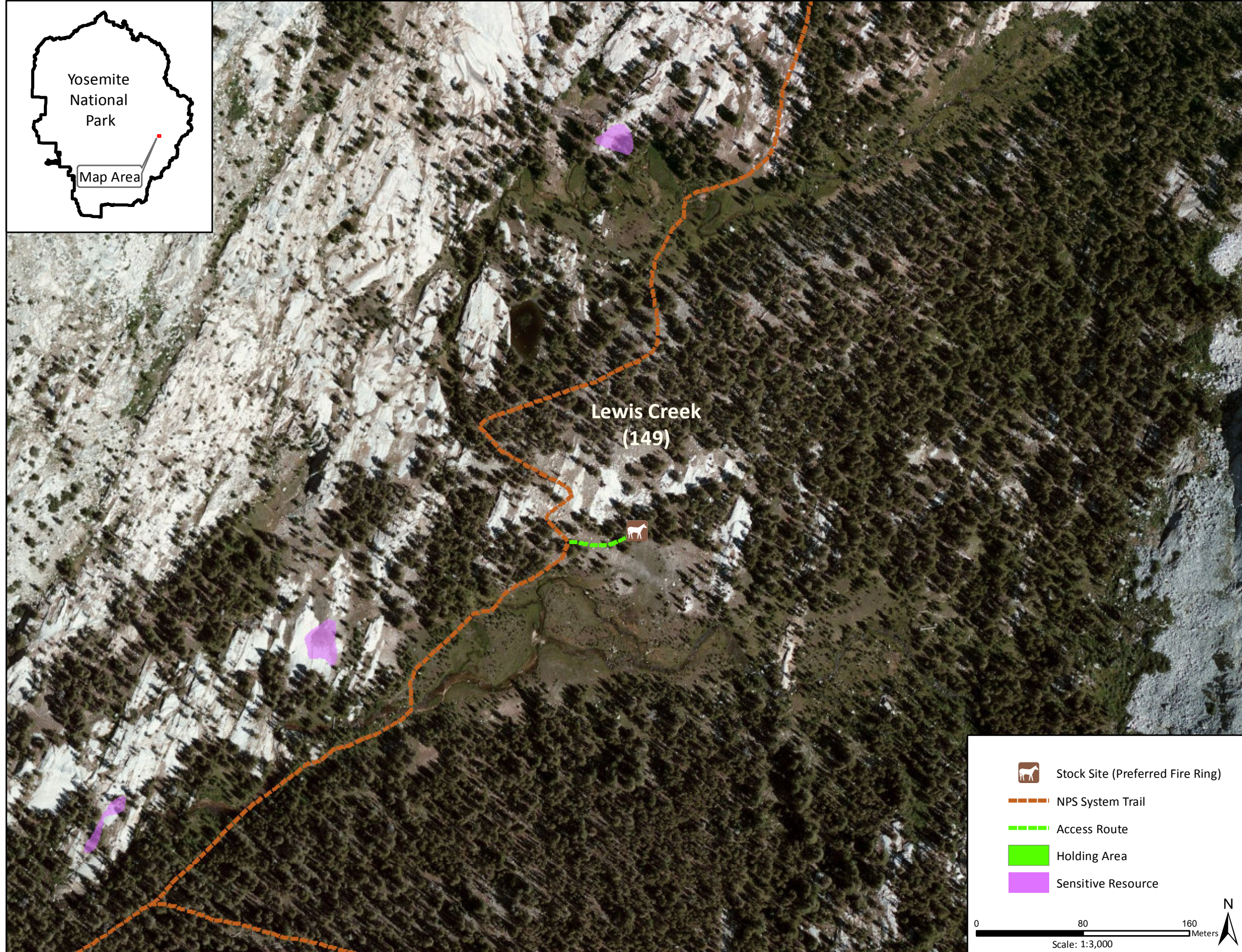
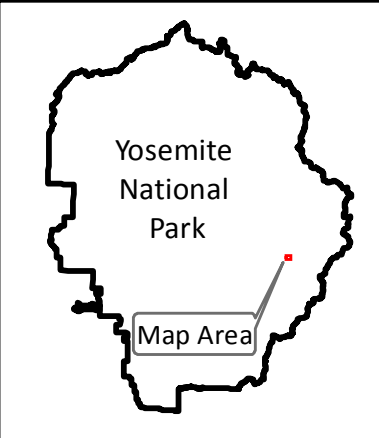


Stock Site Evaluation Project Lewis Creek

Yosemite National Park
California

National Park Service
U.S. Department of the Interior



Forage Area: There is a large meadow south of the site. However this site is located 9,900 feet, which is above the limit for grazing (9,600 feet). Groups must use supplemental feed at this site.

Lewis Creek

Camp ID: 149

Fire Ring: 294,052mE x 4,183,079mN

Handling Practices: This site is located on the northern edge of a meadow and the southern edge of a bedrock outcrop approximately 0.25 mile northeast of the junction of the trail to Bernice Lake. The access route heads east along the northern edge of the meadow for 50 m to the fire ring. The unloading area and holding area are at the fire ring.