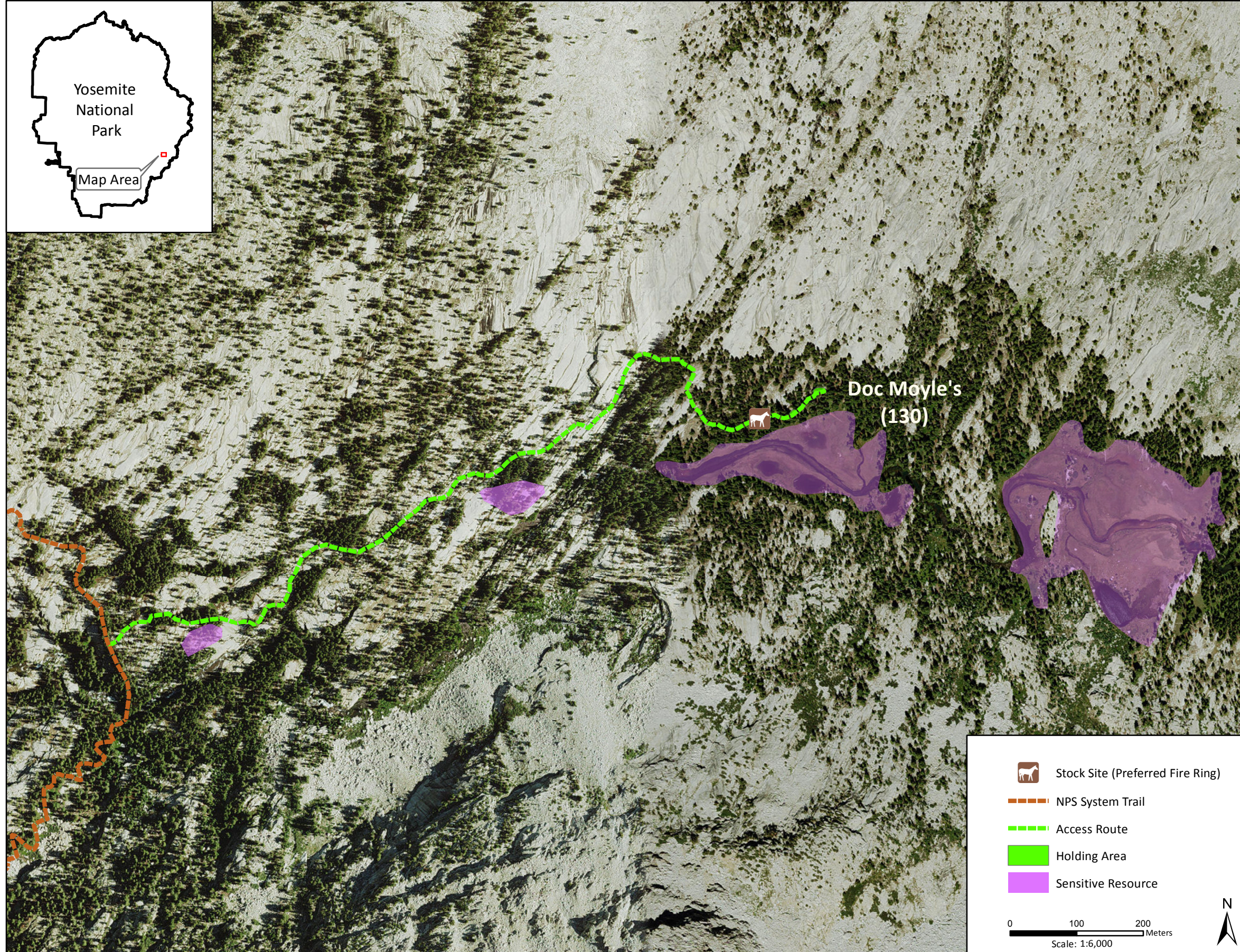
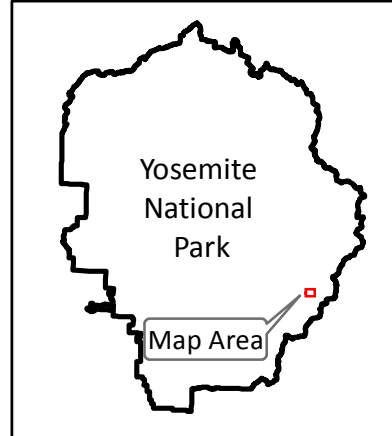


Stock Site Evaluation Project

Lyell Fork of the Merced River - Doc Moyle's

Yosemite National Park
California

National Park Service
U.S. Department of the Interior



Forage Area: There are multiple meadow areas near Doc Moyle's. However, these are all wet until late in the season. It is recommended that grazing not be allowed in these meadows until the meadow areas are allowed to dry. This will reduce the potential for stock use to cause impacts.

Doc Moyle's

Camp ID: 130

Fire Ring: 295,947mE x 4,176,235mN

Handling Practices: This site is located in a canyon along the Lyell Fork of the Merced River at Doc Moyle's camp. The access route is long and starts approximately 90 m north of where the NPS system trail crosses the river. The route heads east up the slope for approximately 0.8 mile to the fire ring. The unloading area is at the fire ring. There are two holding areas. The first is 40 m east of the fire ring along an informal trail, and the second is 100 m east of the fire ring along the same informal trail.