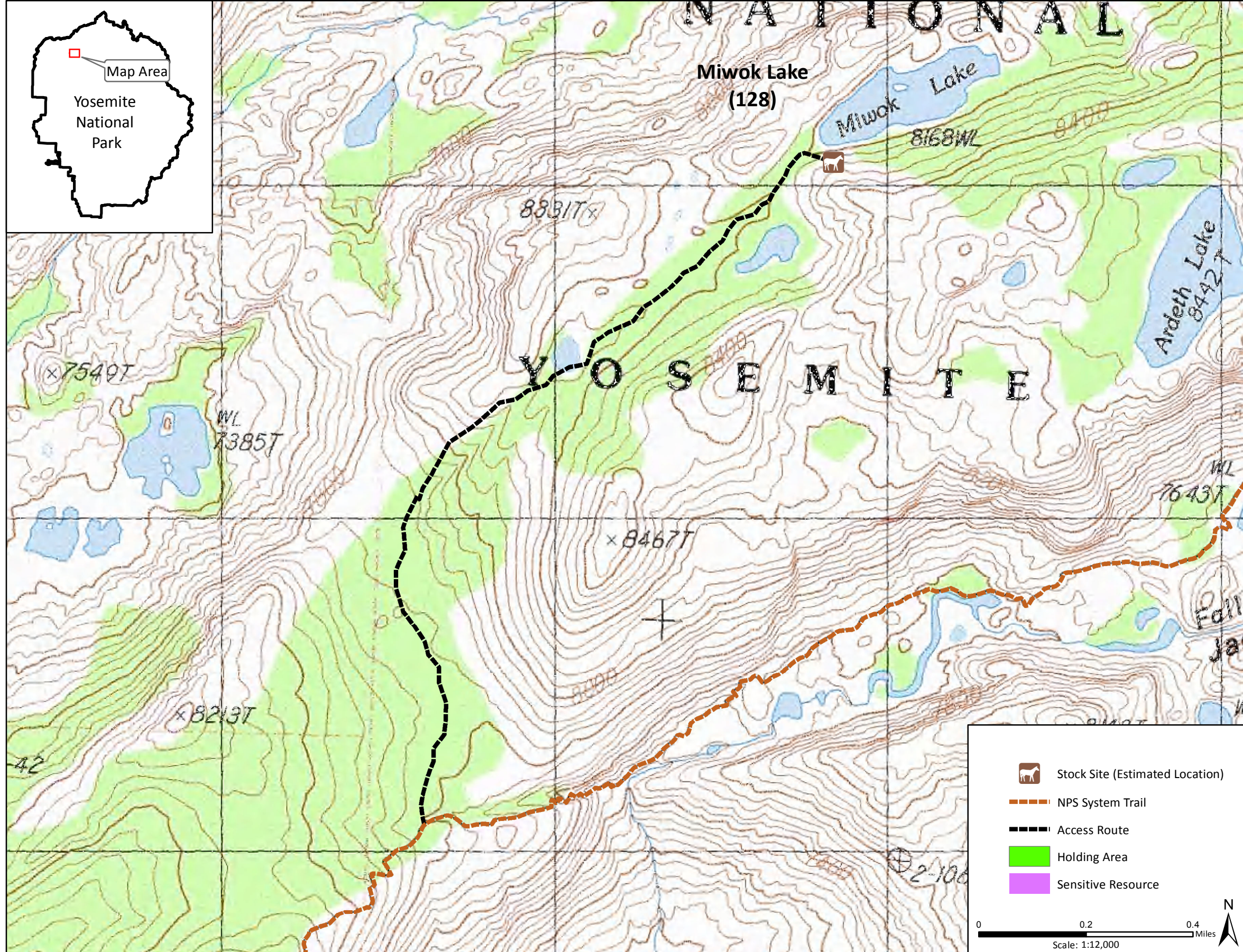


Stock Site Evaluation Project Miwok Lake

Yosemite National Park
California

National Park Service
U.S. Department of the Interior



Forage Area: The forage area has not been investigated for this site, but there is a small meadow area 0.5 mile southwest of the lake that can be used for grazing.

Miwok Lake

Camp ID: 128

Estimated Location: 262,752mE x 4,215,267mN

Handling Practices: This site location has not been verified. It was included in the list of Operator Specified stock sites, but not stock use has been documented here. It is estimated to be on the southwest edge of Miwok Lake. The access route is unclear. The estimated route starts at the points where the NPS system trail begins to descend into Jack Main Canyon and heads approximately 1.75 miles up the slope to the north and northeast to the site. The closest confirmed site is Paradise Meadow, which is located approximately 2.75 miles east of where the access route diverges from the NPS system trail.