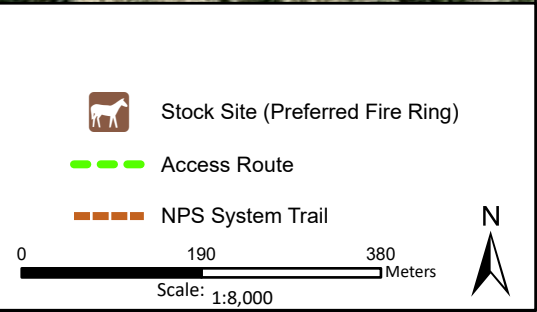
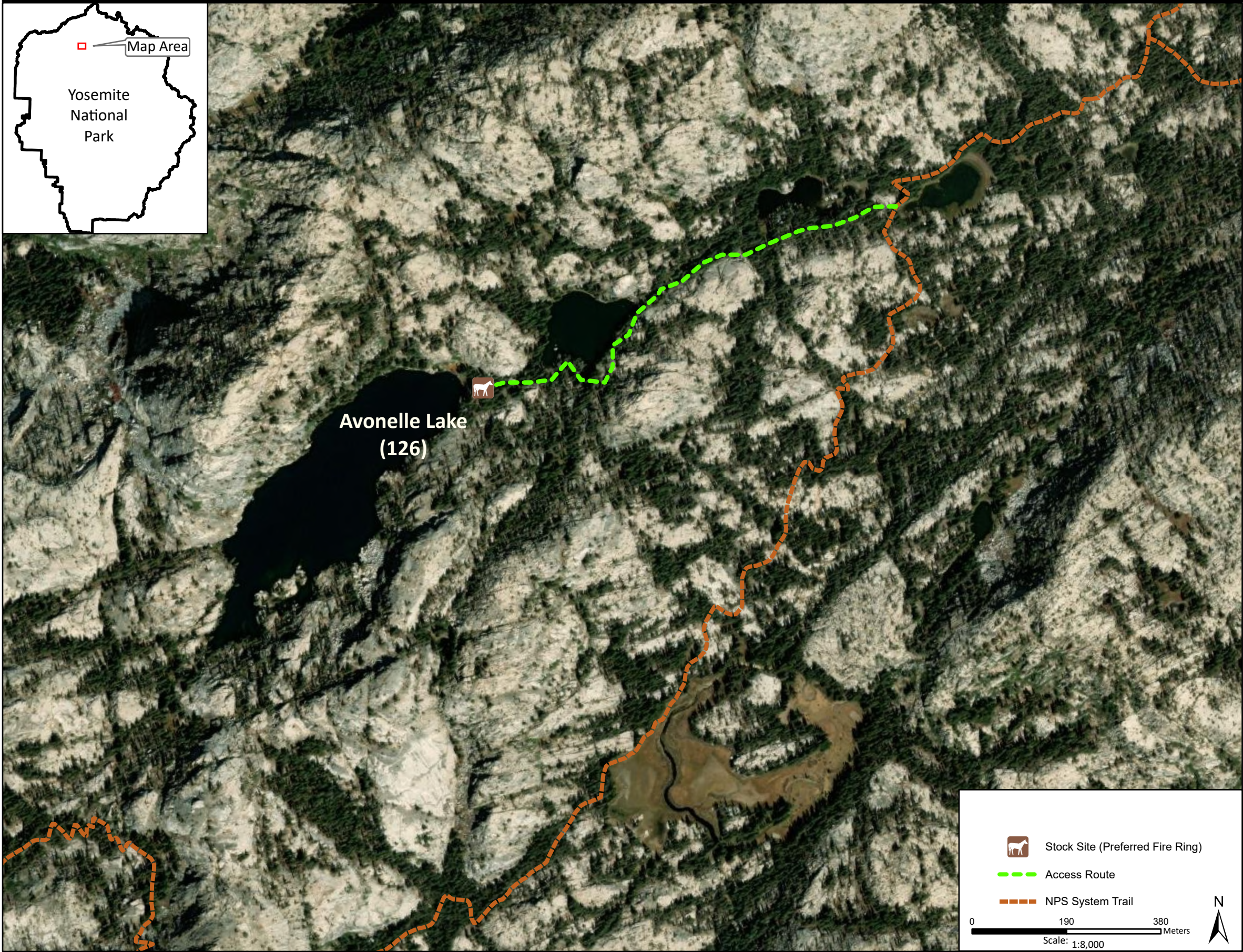
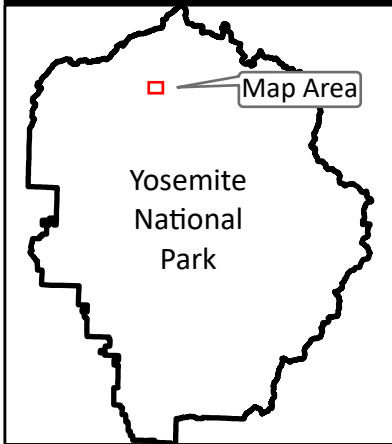


Stock Site Evaluation Project  
Avonelle Lake

Yosemite National Park  
California

National Park Service  
U.S. Department of the Interior



Forage Area: The forage area has not been investigated for this site. No meadow areas are visible in aerial photography.

No annual grazing capacity has been set.

Avonelle Lake

Camp ID: 126  
Estimated Location: 268,396mE x 4,215,380mN  
Handling Practices: This site location has not been verified. It was included in the list of Operator Specified stock sites, but no stock use has been documented here. It is estimated to be on the west side of Avonelle Lake. The access route is unclear. The estimated route starts on the west side of an unnamed lake 0.4 mile west of the junction between the Pacific Crest Trail and the trail that heads west along Tilden Canyon Creek. The route heads up the slope west past two other unnamed lakes to the site. The closest confirmed site is Wilma Lake, which is located approximately 2 miles north of where the access route diverges from the NPS system trail.