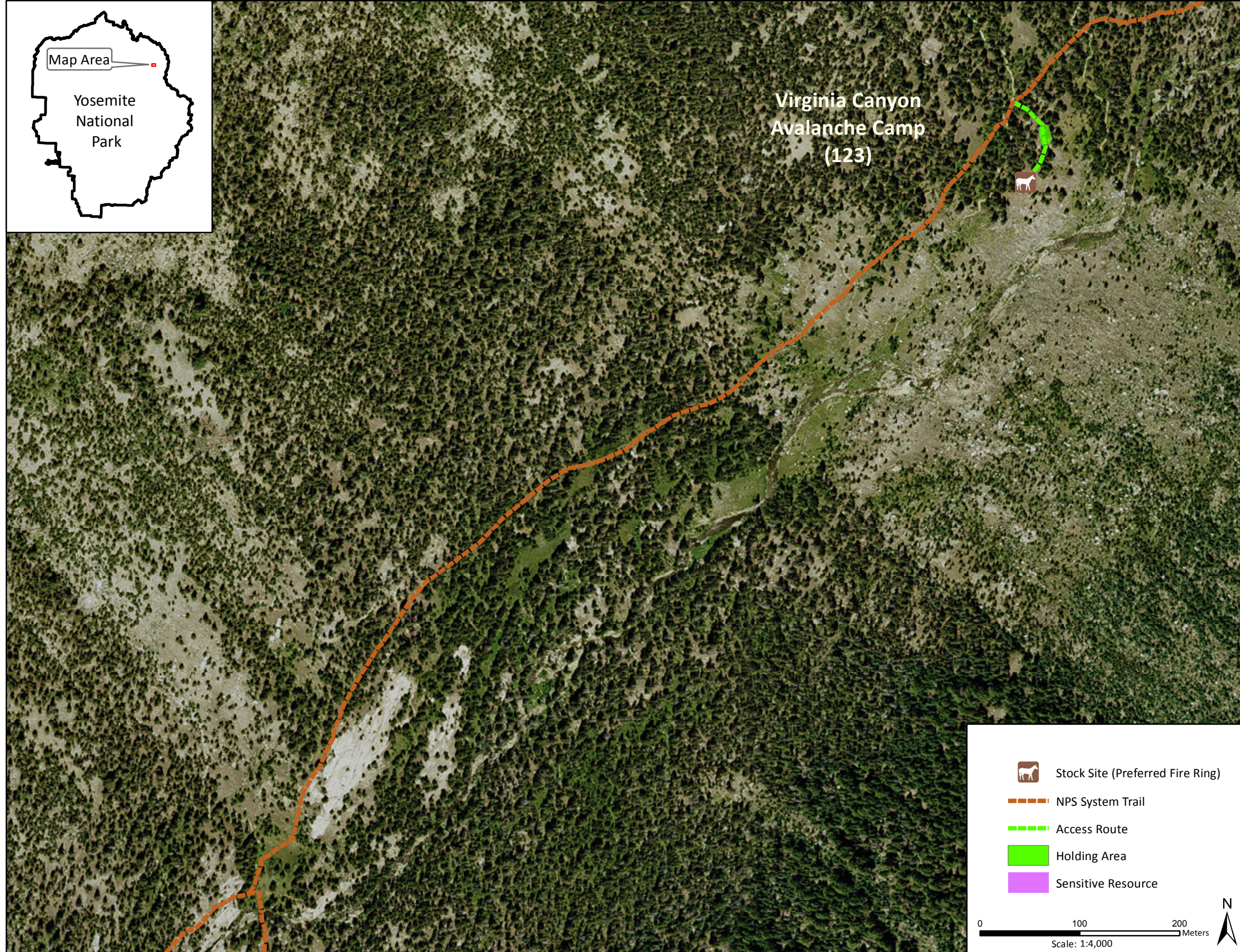
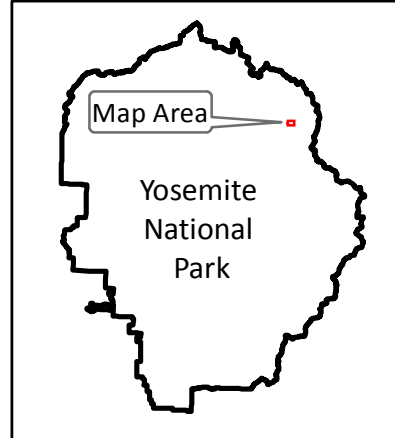


Stock Site Evaluation Project

Virginia Canyon - Avalanche Camp

Yosemite National Park
California

National Park Service
U.S. Department of the Interior



Forage Area: There is limited understory forage at and surrounding the site. There are multiple small meadow areas on both sides of the creek.

Virginia Canyon - Avalanche Camp

Camp ID: 123

Fire Ring: 292,292mE x 4,210,115mN

Handling Practices: This is the preferred stock site for commercial use in Virginia Canyon. This site is located approximately 0.9 mile northeast of the point where the Pacific Crest Trail crosses Return Creek. The site is on the west side of the creek. The access route begins approximately 20 m north of where the NPS system trail crosses a small intermittent drainage. The route heads southeast then south approximately 90 m to the fire ring, passing through the holding area on the way. The unloading area is at the fire ring. The holding area is approximately 40 m north of the fire ring.