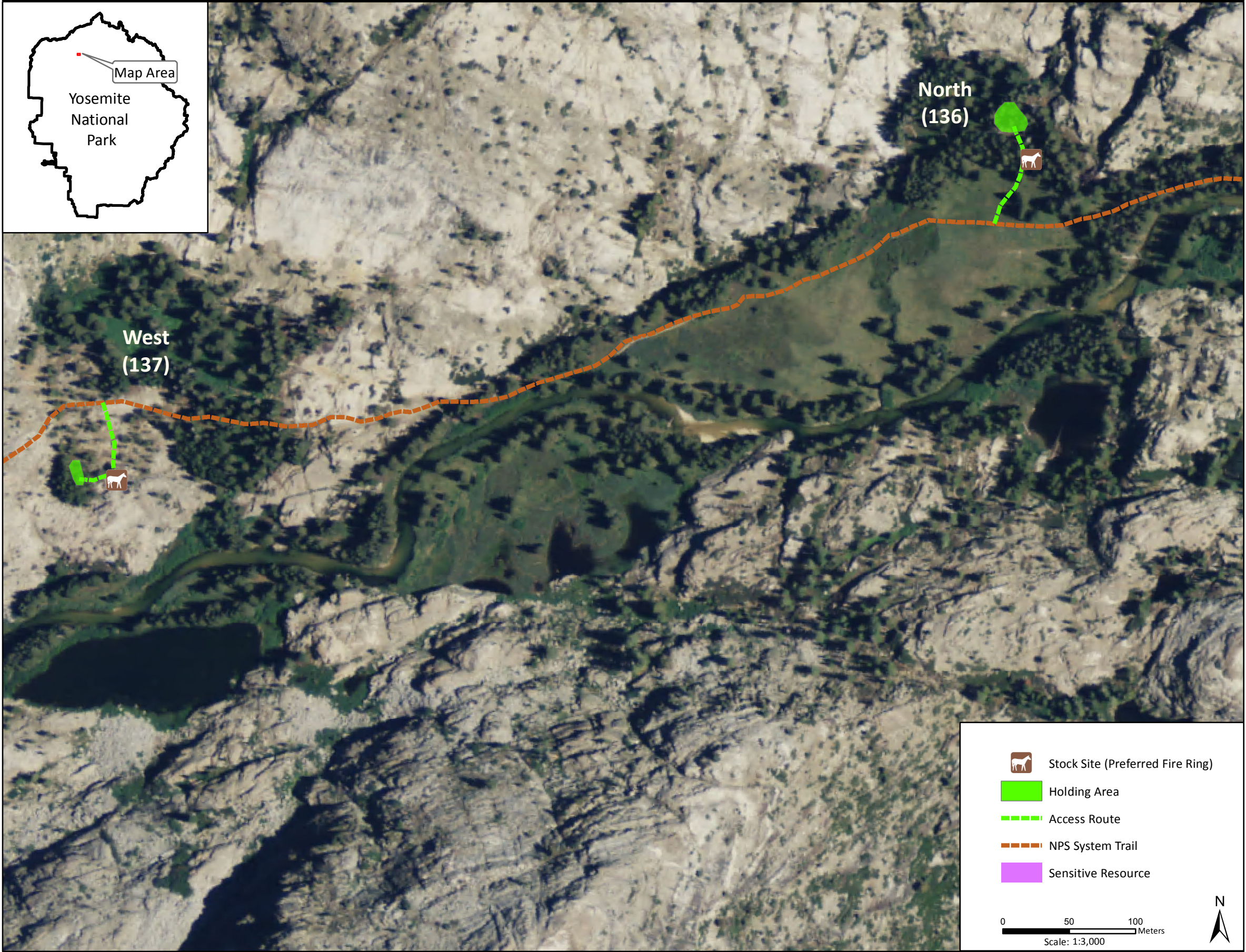


Stock Site Evaluation Project
Paradise Meadow North and West

Yosemite National Park
California

National Park Service
U.S. Department of the Interior



Forage Area: Both camps can use the large meadow area that is bisected by the NPS system trail and bordered to the south by Falls Creek. There is also understory forage surrounding this meadow. There is a small amount of understory forage at Paradise Meadow - West, but this area is wet for most of the year and to protect sensitive habitat it is preferred for operators to have stock graze in the meadow close to Paradise Meadow - North.

Paradise Meadow - North

Camp ID: 136
Fire Ring: 265,557mE x 4,214,418mN
Handling Practices: This is the primary stock site at Paradise Meadow. The access route diverges from the NPS system trail and heads north into the forested area of the camp. The unloading area is at the fire ring. The holding area is 25 m northwest of the fire ring.

Paradise Meadow - West

Camp ID: 137
Fire Ring: 264,888mE x 4,214,176mN
Handling Practices: The is the secondary site at Paradise Meadow. The access route heads south from the NPS system trail over sandy flats and bedrock areas to the fire ring, which is on the north side of a bedrock wall. The unloading area is at the fire ring. The holding area is on the northern edge of a group of pines 20 m west of the fire ring.