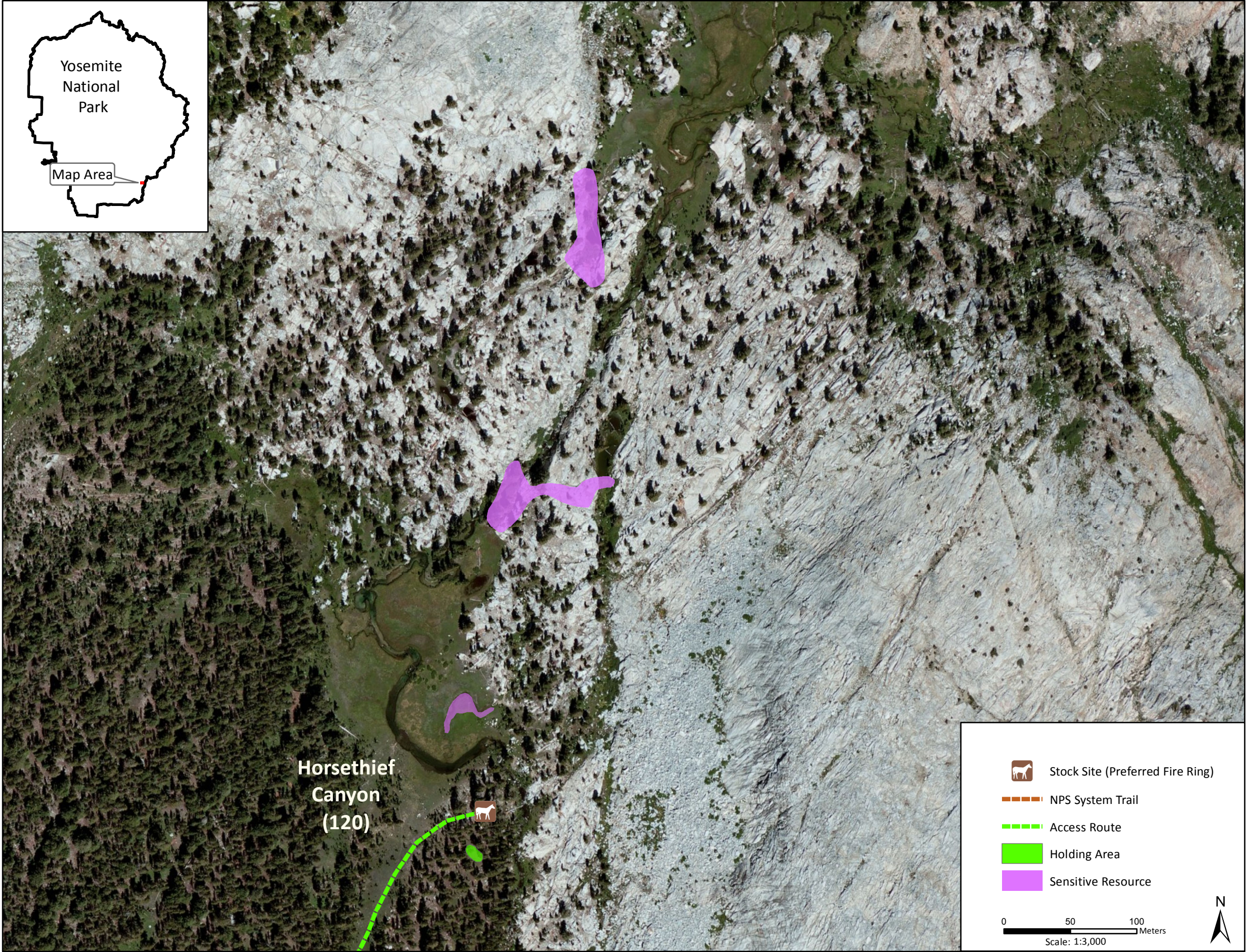
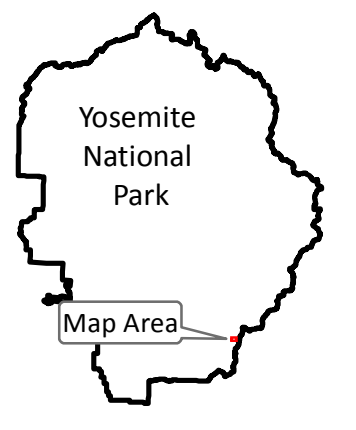


Stock Site Evaluation Project
Horsethief Canyon

Yosemite National Park
California

National Park Service
U.S. Department of the Interior



Forage Area: There is a meadow area and limited surrounding understory forage north and west of the site, and a second meadow area up the slope approximately 0.25 mile to the north past bedrock outcrops that line both sides of the river and create a small gorge. Keep animals out of the sensitive resource area shown in the meadow (wetland), due to concerns about stock use causing potential impacts.

Horsethief Canyon

Camp ID: 120
Fire Ring: 289,034mE x 4,165,132mN
Handling Practices: This site is located at the southeast corner of Horsethief Meadow on a forested knoll that is bordered to the north and east by the South Fork of the Merced River. The site far from the NPS system trail. To access the site, an informal trail begins on the west side of the river crossing and heads up the slope northeast for approximately 1.4 miles to the knoll, which is on the east side of a thin finger meadow. The fire ring is near the north end of the knoll. The unloading area is at the fire ring and the holding area is 30 m south of the fire ring.