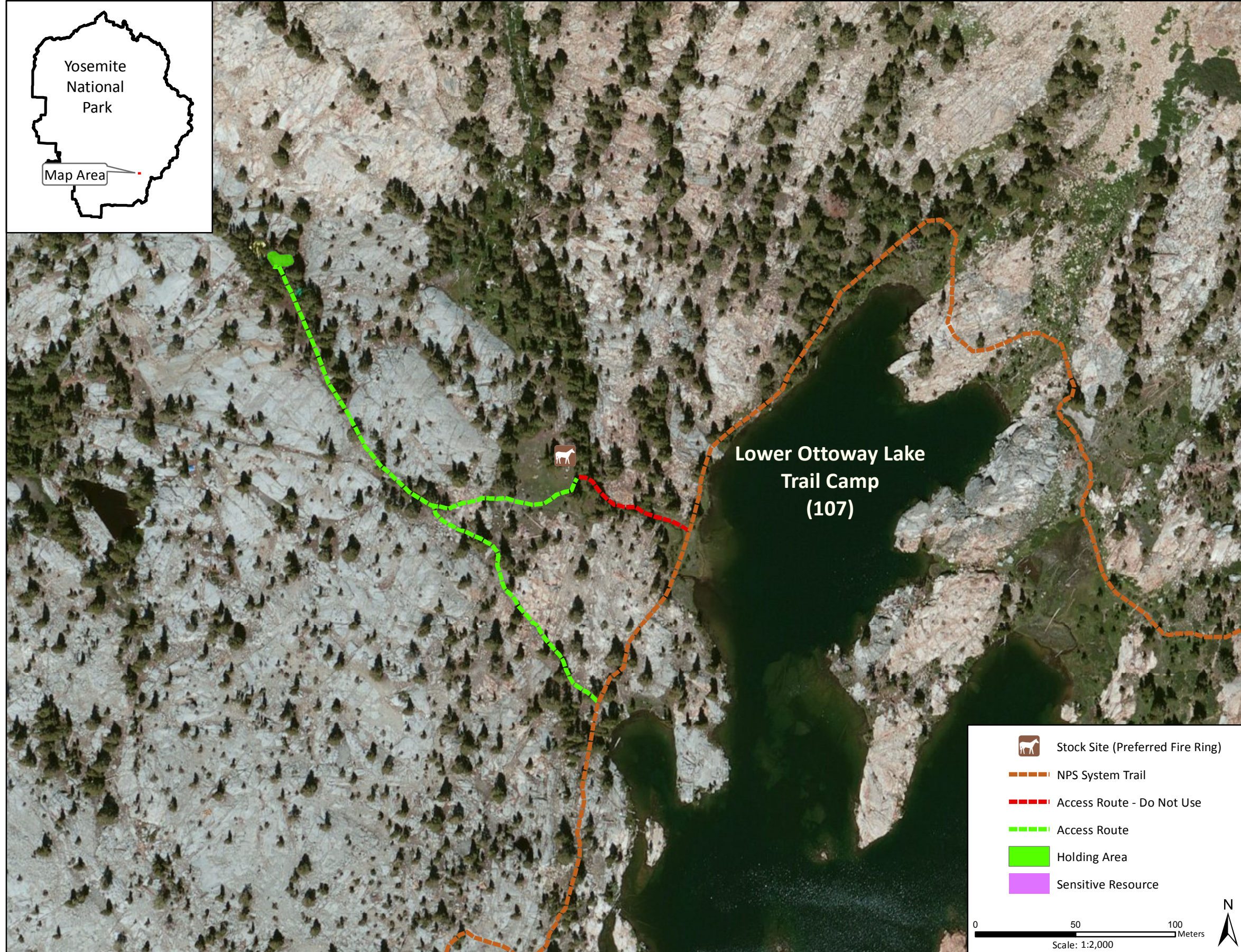
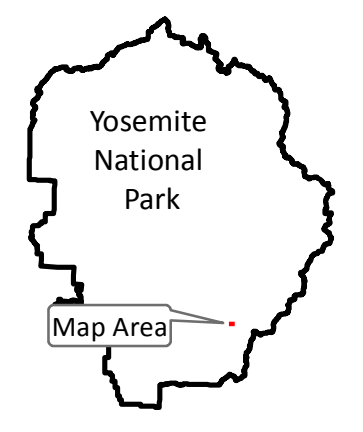


Stock Site Evaluation Project Lower Ottoway Lake Trail Camp

Yosemite National Park
California

National Park Service
U.S. Department of the Interior



Forage Area: Forage is limited to small meadow areas along the edges of the lake. It is recommended that only a very small amount of grazing occur at this site, and that groups wait until late in the season for the wet meadows to dry up, as stock use earlier in the season has the potential to cause impacts to the meadows.

Lower Ottoway Lake Trail Camp

Camp ID: 107

Fire Ring: 286,450mE x 4,169,210mN

Handling Practices: This site is located on the west side of Lower Ottoway Lake. The access route heads through bedrock outcrops for approximately 130 m northwest to a spot where the use trail splits. Head another 70 m east to the fire ring. The unloading area is at the fire ring. The holding area is approximately 200 m northwest of the fire ring. To access it, head back west on the same access route to the split, then head approximately 130 m northwest to the holding area. There is an old access route that heads west from the fire ring back to the NPS system trail. Do not use this access route, as it passes along an unstable drainage that stock use has the potential to create increased erosion.