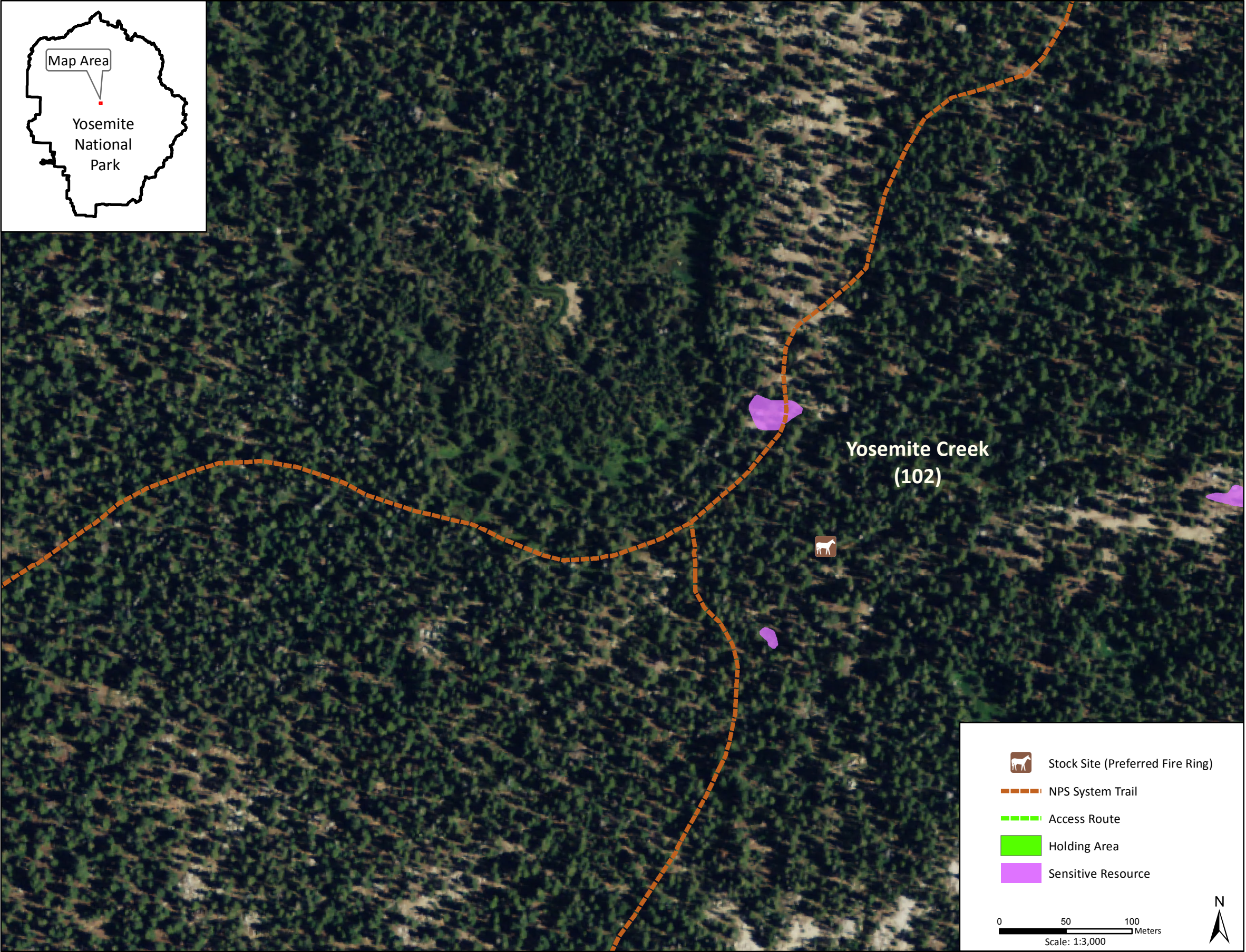
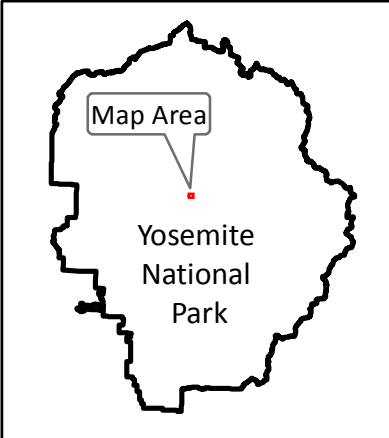


Stock Site Evaluation Project
Yosemite Creek

Yosemite National Park
California

National Park Service
U.S. Department of the Interior



Forage Area: The forage area has not been investigated for this site, but no meadows are visible in aerial photography.

Yosemite Creek

Camp ID: 102

Estimated Location: 274,260mE x 4,195,362mN

Handling Practices: This site location has not been verified, but is estimated to be in the Yosemite Creek drainage approximately 2 miles north of Tioga Road at the junction of the trails to Ten Lakes and the Middle Fork of the Tuolumne River. Do not camp or hold stock on the sensitive resource areas that surround the lake due to concerns about stock use causing potential impacts.