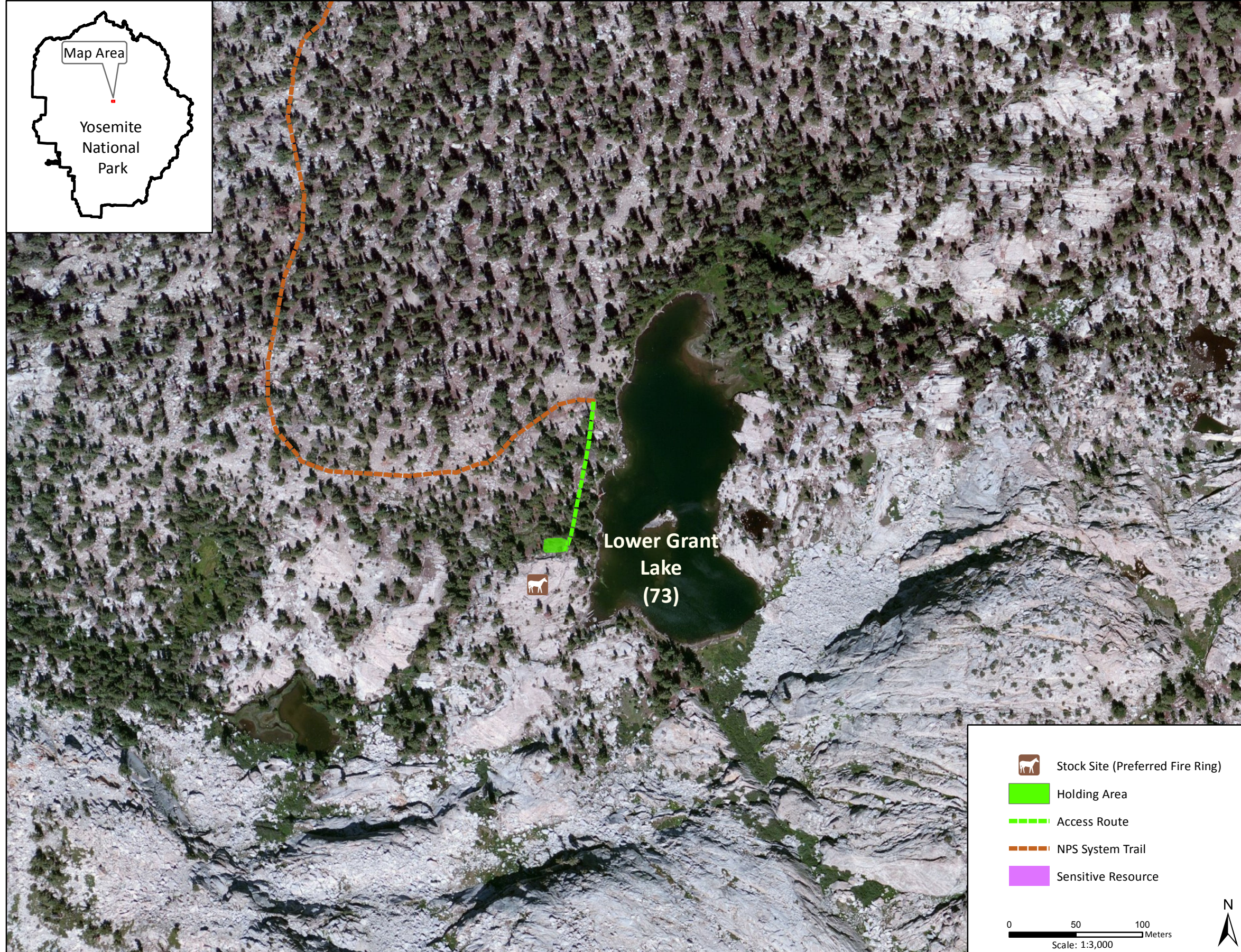
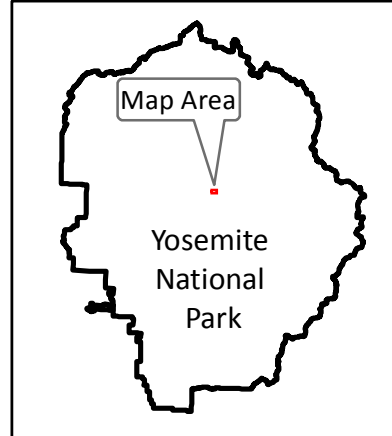


Stock Site Evaluation Project Lower Grant Lake

Yosemite National Park
California

National Park Service
U.S. Department of the Interior



Forage Area: The forage area has not been investigated for this site but it is suspected that there is very limited understory and two very small meadows are visible on the north and south ends of Grant Lake.

Harden Lake-East

Camp ID: 73

Fire Ring: 276,606mE x 4,196,197mN

Handling Practices: This site is on the southwest side of Lower Grant Lake on a bedrock outcrop. The access route heads south from the end of the NPS system trail along the west edge of the lake for approximately 100 m to the unloading area, which is also the holding area. It is bordered to the south by a granite bedrock outcrop. The fire ring is up the slope 30 m south on the bedrock.