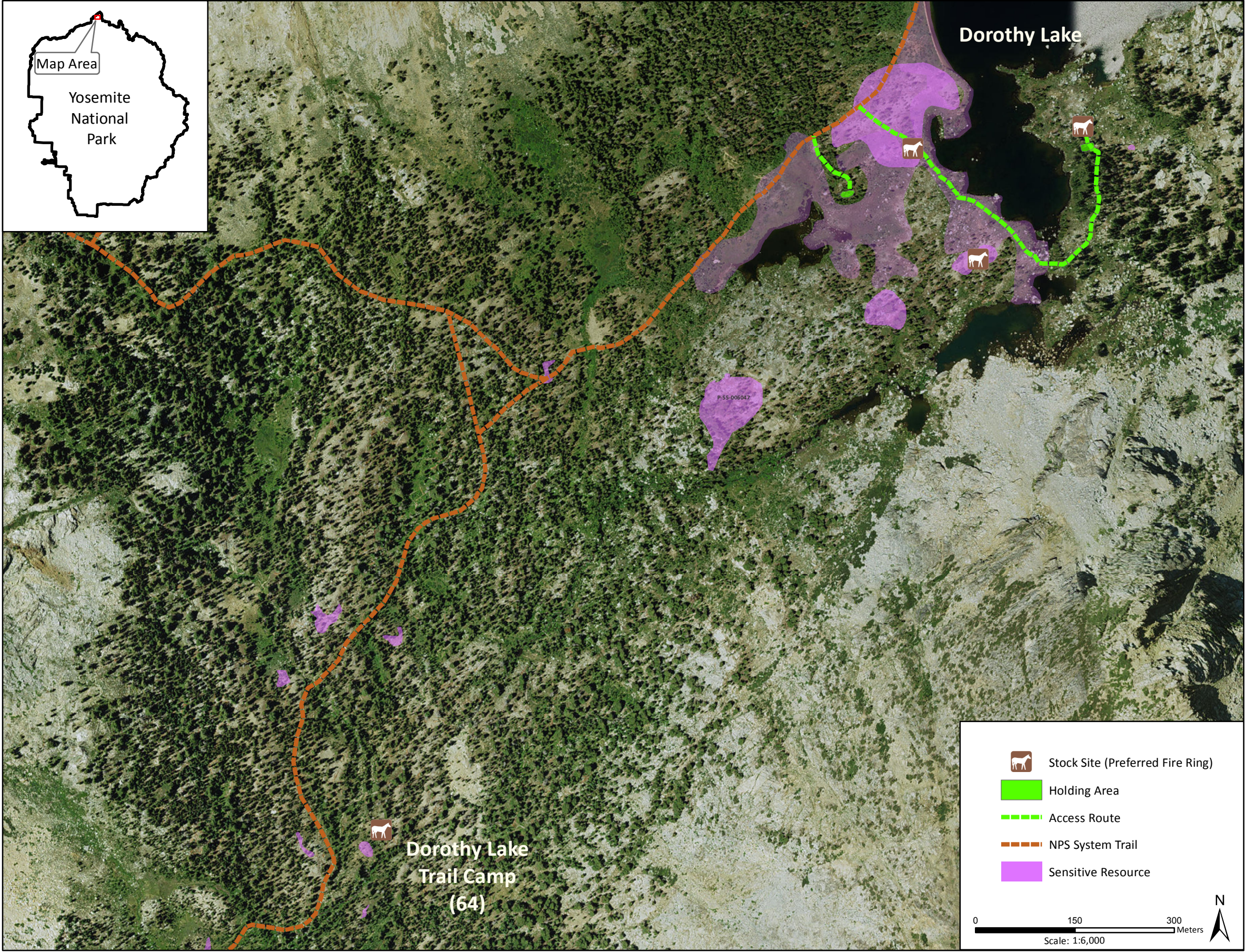


Stock Site Evaluation Project  
Dorothy Lake Trail Camp

Yosemite National Park  
California

National Park Service  
U.S. Department of the Interior



Forage Area: The forage area for this site has not been investigated, though it is suspected that there is very limited understory forage in this area and no meadows are visible the aerial photography.

**Dorothy Lake Trail Camp**

Camp ID: 64  
Estimated Location: 271,953mE x 4,227,235mN  
Handling Practices: This site is located approximately 0.8 mile southwest of Dorothy Lake. Commercial use of the site has not been verified and no administrative stock use has been documented here. However, the site was included in the list of Operator Specified stock sites. The suspected site location is between the NPS system trail and the west side of Falls Creek. If using the site, do not camp or hold stock on the sensitive resource areas indicated on the map due to concerns about potential impacts. Alternative stock use options include one site approximately 1.5 miles southwest at Grace Meadow, and three sites approximately 1-1.5 miles northeast at Dorothy Lake