

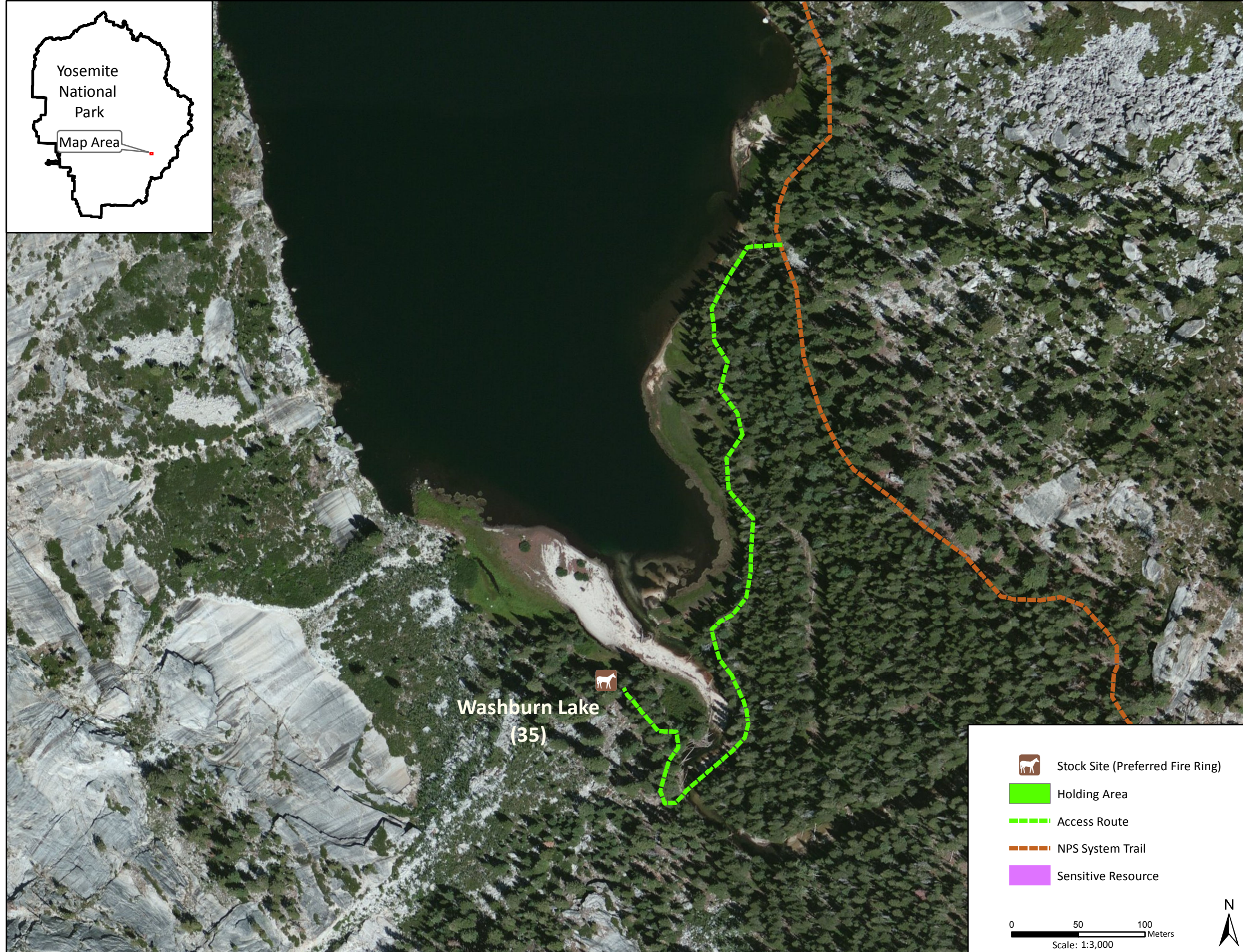
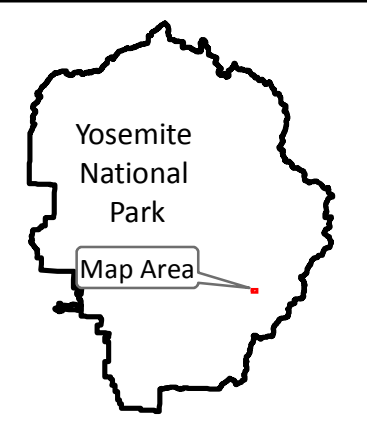
Stock Site Evaluation Project Washburn Lake

Yosemite National Park
California

National Park Service
U.S. Department of the Interior



Forage Area: There is limited understory forage and small meadow areas surrounding the lake.



Washburn Lake

Camp ID: 35

Estimated Location: 291,019mE x 4,176,420mN

Handling Practices: This site is located on the southern end of Washburn Lake on the west side of the Merced River. The access route is long and starts on the southeast side of the lake, follows a social trail along the edge of the lake, crosses the river, and heads northwest to the fire ring. The entire route is approximately 0.4 mile long. The unloading area and holding area are at the fire ring.