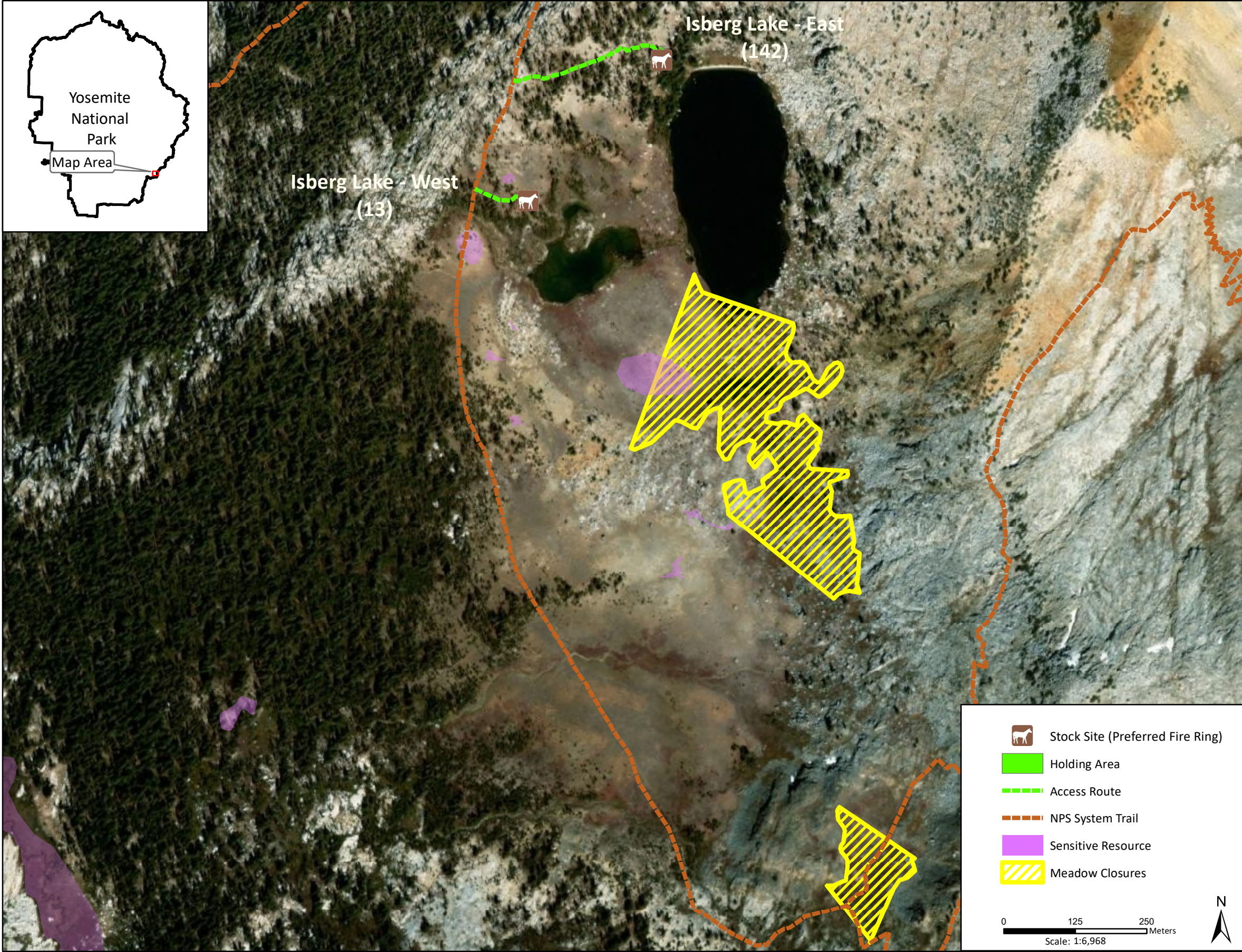
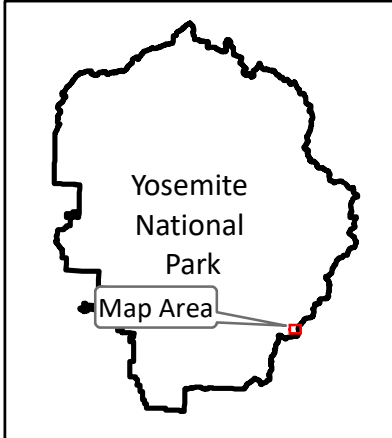


Stock Site Evaluation Project
Isberg Lake West and East

Yosemite National Park
California

National Park Service
U.S. Department of the Interior



Forage Area: There are meadow and understory forage areas surrounding the lake and adjacent to the sites.

Isberg Lake - West

Camp ID: 13
Site Location: 293,935mE x 4,169,374mN
Handling Practices: Per the Superintendent's Compendium, no fire rings are allowed at Isberg Lake, as the elevation here, 10,000 feet, is above the legal fire ring elevation of 9,600 feet. This is the primary site at Isberg Lake. The access route is north of the outlet creek and heads east from the NPS system trail approximately 100 m to a flat camping area on the north side of a group of trees that overlook the lake. The unloading area and holding area are in the camping area.

Isberg Lake - East

Camp ID: 142
Site Location: 294,168mE x 4,169,621
Handling Practices: Per the Superintendent's Compendium, no fire rings are allowed at Isberg Lake, as the elevation here, 10,000 feet, is above the legal fire ring elevation of 9,600 feet. This is the secondary site at Isberg Lake. The access route is lengthy and heads east from the NPS system trail for approximately 250 m to the camping area. The unloading area and holding area are 10 m north of a flat camping area that overlooks the north end of the lake.

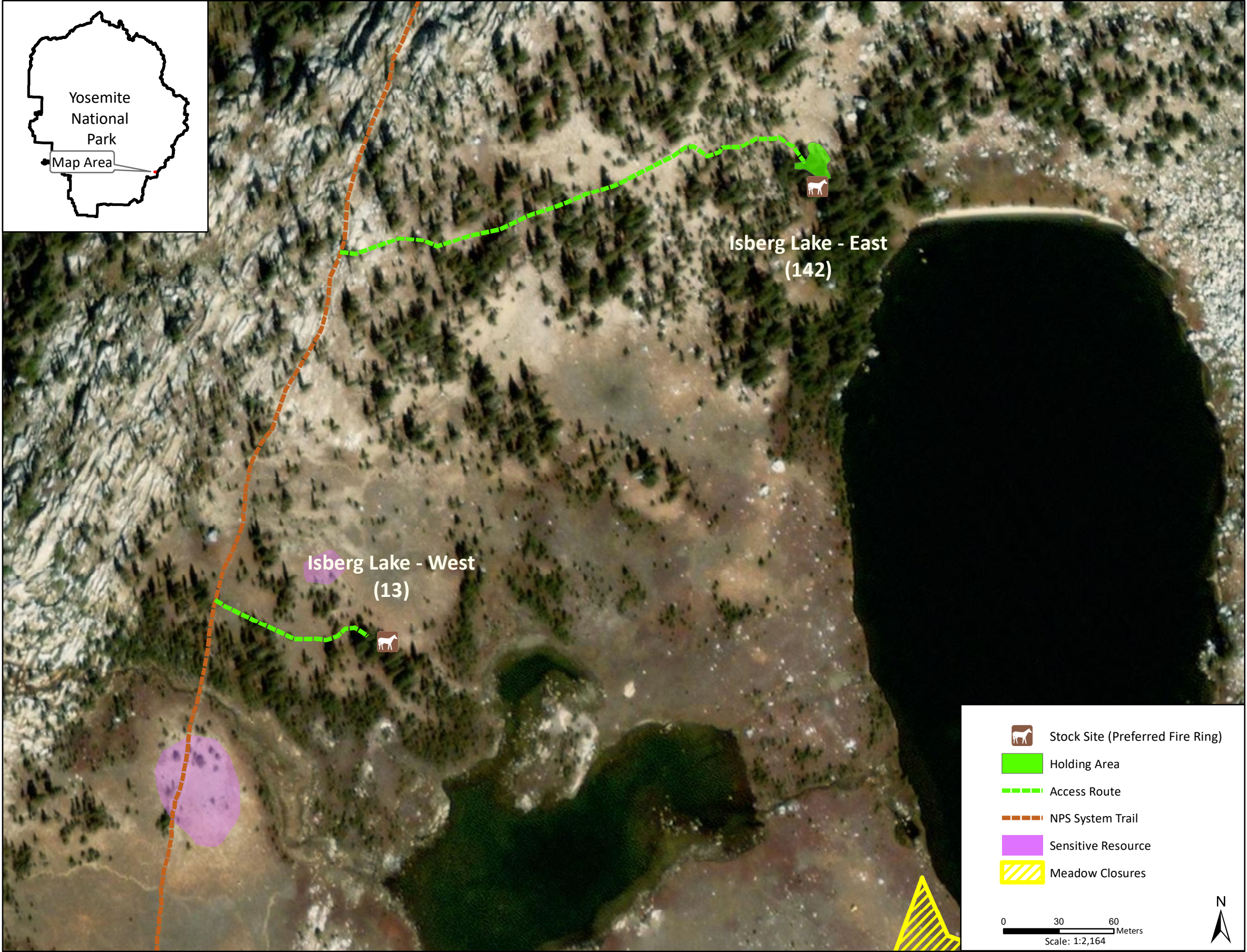
Stock Site Evaluation Project
Isberg Lake West and East

Yosemite National Park
California

National Park Service
U.S. Department of the Interior



Forage Area: There are meadow and understory forage areas surrounding the lake and adjacent to the sites.



Isberg Lake - West

Camp ID: 13
Site Location: 293,935mE x 4,169,374mN
Handling Practices: Per the Superintendent's Compendium, no fire rings are allowed at Isberg Lake, as the elevation here, 10,000 feet, is above the legal fire ring elevation of 9,600 feet. This is the primary site at Isberg Lake. The access route is north of the outlet creek and heads east from the NPS system trail approximately 100 m to a flat camping area on the north side of a group of trees that overlook the lake. The unloading area and holding area are in the camping area.

Isberg Lake - East

Camp ID: 142
Site Location: 294,168mE x 4,169,621
Handling Practices: Per the Superintendent's Compendium, no fire rings are allowed at Isberg Lake, as the elevation here, 10,000 feet, is above the legal fire ring elevation of 9,600 feet. This is the secondary site at Isberg Lake. The access route is lengthy and heads east from the NPS system trail for approximately 250 m to the camping area. The unloading area and holding area are 10 m north of a flat camping area that overlooks the north end of the lake.