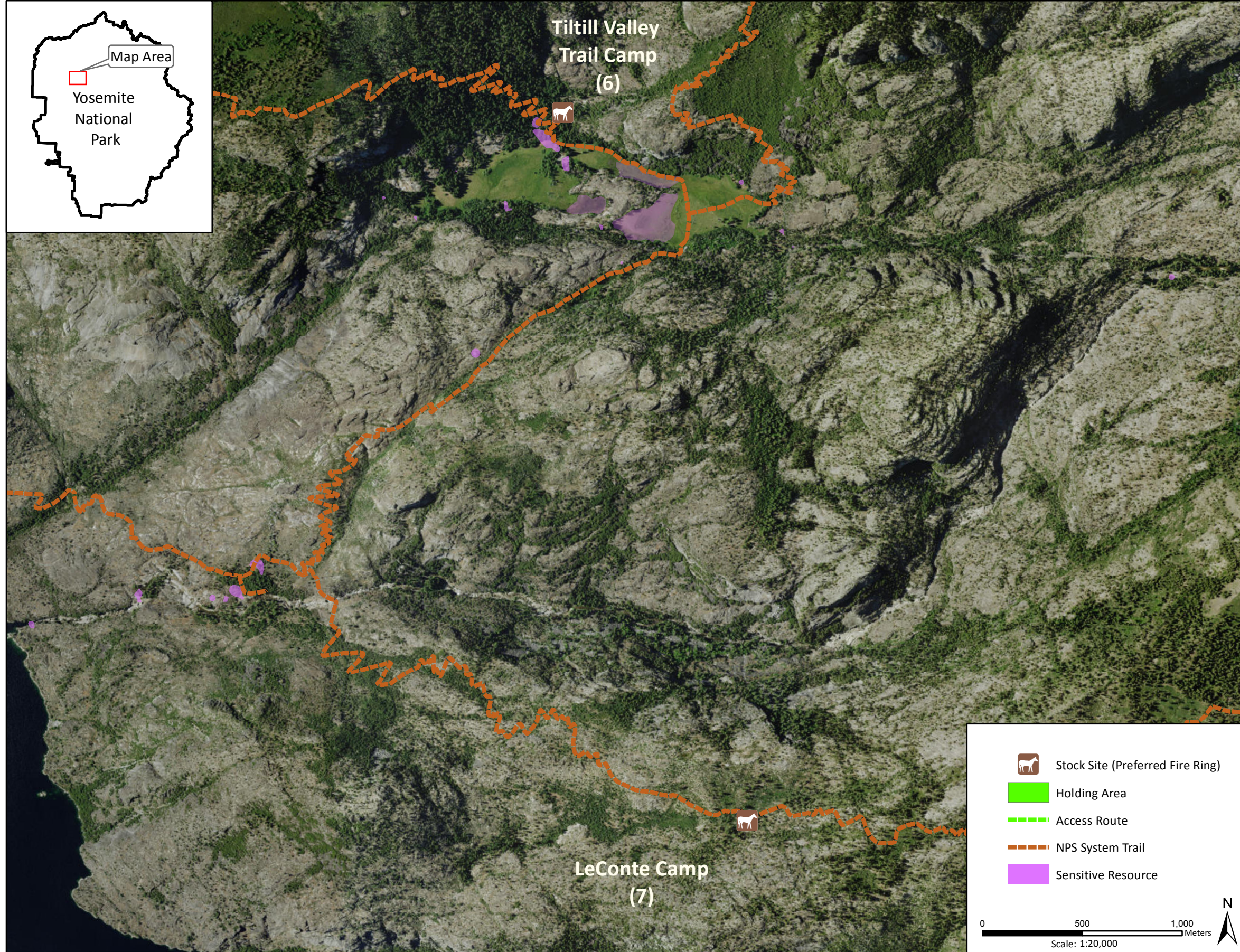
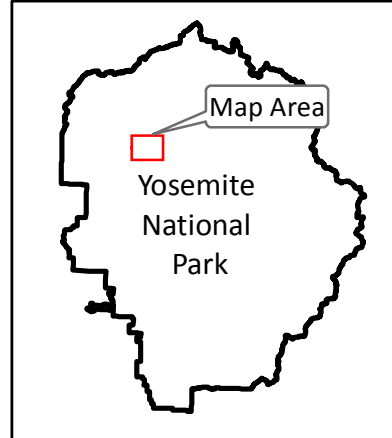


# Stock Site Evaluation Project LeConte Camp

Yosemite National Park  
California

National Park Service  
U.S. Department of the Interior



Forage Area: The forage area for this site has not been investigated, though it is suspected that there is very limited understory forage in this area and no meadows are visible in aerial photography.

## LeConte Camp

Camp ID: 7

Approximate location: 263,995mE x 4,203,205mN

This site location has not been verified. It was included in the list of Operator Specified stock sites, but no stock use has been documented here. If heading to this area, find a fire ring and hold stock close to the trail. The closest confirmed stock site is at Tiltill Valley.