



**National Park Service
U.S. Department of the Interior**

**Yosemite National
Park**

P.O. Box 577
Yosemite National Park
California 95389

Superintendent's Compendium
Of Designations, Closures, Permit
Requirements and Other
Restrictions Imposed Under
Discretionary Authority.

209-372-0200 phone

Approved:

s/ Cicely Muldoon

Cicely Muldoon
Superintendent

9/21/2021

Date

In accordance with regulations and the delegated authority provided in Title 36, Code of Federal Regulations ("36 CFR"), Chapter 1, Parts 1-7 and Part 34, authorized by Title 54 United States Code, Section 100751, the following regulatory provisions are established for the proper management, protection, government and public use of those portions of the El Portal Administrative Site under the jurisdiction of the National Park Service. Unless otherwise stated, these regulatory provisions apply in addition to the requirements contained in 36 CFR, Chapter 1, Parts 1-7 as incorporated in Part 34.

Written determinations, which explain the reasoning behind the Superintendent's use of discretionary authority, as required by Section 1.5(c), appear in this document identified by italicized print.

Contents

Contents	2
PART 1 – GENERAL PROVISIONS	4
Section 1.4 Definitions.....	4
Section 1.5(a)(1) Closures and Public Use Limits	5
Visiting Hours	5
Public Use Limits.....	5
Closures	12
Under the authority of 36 Code of Federal Regulations 1.5(a)(2), the following areas have been designated for a specific use or activity, under the conditions and/or restrictions as noted:..	18
36 CFR §1.6 – ACTIVITIES THAT REQUIRE A PERMIT	23
(f) The following is a compilation of those activities for which require a permit from the Superintendent:.....	23
PART 2: RESOURCE PROTECTION, PUBLIC USE AND RECREATION	26
36 CFR §2.1 – PRESERVATION OF NATURAL, CULTURAL AND ARCHEOLOGICAL RESOURCES ..	26
36 CFR §2.2 - WILDLIFE PROTECTION	26
36 CFR §2.3 – FISHING	27
36 CFR §2.4 – WEAPONS, TRAPS, AND NETS.....	28
36 CFR §2.5 – RESEARCH SPECIMENS.....	29
36 CFR §2.10 – CAMPING and FOOD STORAGE	29
Non-Wilderness	29
Wilderness.....	31
(d) Conditions for the storage of food are in effect, as noted, for the following areas:...	33
36 CFR §2.11 – PICNICKING.....	34
36 CFR §2.12 – AUDIO DISTURBANCES	35
36 CFR 2.13 – FIRES	35
(a)(1) The lighting or maintaining of fires is generally prohibited, except as provided for in the following designated areas and/or receptacles, and under the conditions noted:....	35
(a)(2) The following restrictions are in effect for the use of stoves or lanterns:	37
(b) Fires must be extinguished according to the following conditions:.....	37
36 CFR §2.14 – SANITATION and REFUSE	37

36 CFR §2.15 – PETS	37
(a)(1) The following structures and/or areas are closed to the possession of pets:	37
(a)(1) The following structures and/or areas are open to the possession of pets:.....	37
(a)(5) Pet excrement must be disposed of in accordance with the following conditions:	38
(e) Pets may be kept by park residents under the following conditions:.....	38
36 CFR §2.16 – HORSES and PACK ANIMALS	38
36 CFR §2.17 – AIRCRAFT and AIR DELIVERY	39
36 CFR §2.21 – SMOKING	40
36 CFR §2.22 – PROPERTY	40
36 CFR §2.35 –ALCOHOLIC BEVERAGES and CONTROLLED SUBSTANCES.....	41
36 CFR §2.50 – SPECIAL EVENTS.....	41
36 CFR §2.51 – DEMONSTRATIONS	41
36 CFR §2.52 – SALE OR DISTRIBUTION OF PRINTED MATTER	42
Part 3: BOATING AND WATER USE ACTIVITIES	42
36 CFR §2.62 – MEMORIALIZATION.....	42
36 CFR §3.8 (a)(2) – LAUNCHING OR RECOVERY OF A VESSEL.....	42
PART 4: VEHICLES AND TRAFFIC SAFETY.....	43
36 CFR §4.11 – VEHICLE LOAD, WEIGHT AND SIZE LIMITS	43
36 CFR §4.21 – SPEED LIMITS	44
36 CFR §4.30 – BICYCLES	44
36 CFR §4.31 – HITCHHIKING.....	45
PART 7: SPECIAL REGULATIONS, AREAS OF THE NATIONAL PARK SYSTEM	46
36 CFR §7.16 – YOSEMITE NATIONAL PARK	46

PART 1 – GENERAL PROVISIONS

The specific discretionary authority for Park Superintendents to establish reasonable schedules for visiting hours, impose public use limits, and close park areas for all public use or specific use is found in Title 36 Code of Federal Regulations (CFR) §1.5. These park-specific restrictions are also based upon 36 CFR, Chapters 1-7 to protect park resources, visitors and employees. Under CFR §1.7 notice of all restrictions, closures, designations and permit requirements will be made available to the general public by a least one or more of the following methods of notifications: maps, brochures, signs, permits, or other appropriate methods, as well as within this compendium.

Section 1.4 Definitions

Electric Bicycle (aka E-Bike)- a two- or three-wheeled cycle with fully operable pedals and an electric motor of not more than 750 watts that meets the requirements of one of the following three classes:

(1) “Class 1 electric bicycle” shall mean an electric bicycle equipped with a motor that provides assistance only when the rider is pedaling, and that ceases to provide assistance when the bicycle reaches the speed of 20 miles per hour.

(2) “Class 2 electric bicycle” shall mean an electric bicycle equipped with a motor that may be used exclusively to propel the bicycle, and that is not capable of providing assistance when the bicycle reaches the speed of 20 miles per hour.

(3) “Class 3 electric bicycle” shall mean an electric bicycle equipped with a motor that provides assistance only when the rider is pedaling, and that ceases to provide assistance when the bicycle reaches the speed of 28 miles per hour.

Food - includes any human food, beverage, pet food, grain or other sweet stock food, food tainted garbage, food tainted equipment, toiletries such as soap, toothpaste, and cosmetics, and any creams, ointments, or lotions. Food containers include any object designed to contain food such as ice chests, coolers, food packaging, and grocery bags whether or not they contain food, or any object that contains food such as a pack or stuff sack.

Sub Dome – The granite dome on the east side of Half Dome where the Half Dome cables begin.

Unmanned Aircraft – A device that is used for flight in the air without the possibility of direct human intervention from within or on the device, and the associated operation elements and components that are required for the pilot or system operator in command to operate or control the device (such as cameras, sensors, or communication links). This term includes the

type of devices that meet this definition (e.g. model airplanes, quadcopters, or drones) that are used for any purpose including recreation or commerce.

An additional listing can be found in the CFR derived under 36 CFR §1.4 or §1.5.

Section 1.5(a)(1) Closures and Public Use Limits

Visiting Hours

Yosemite National Park is open 24 hours a day, 365 days a year excepted where listed below or publicly posted.

Hetch Hetchy

The Hetch Hetchy Road is open to vehicle, bicycle, and pedestrian traffic during the following hours:

8:00am to 7:00pm	April 1 to April 30
7:00am to 9:00pm	May 1 to Labor Day
8:00am to 7:00pm	The day after Labor Day to October 31
8:00am to 5:00pm	November 1 to March 31

In Elevated Threat Level, as determined by the Department of Homeland Security, the Hetch Hetchy Road will be open from 8:00am to 5:00pm. Road hours may be further restricted based on security needs.

In High and Severe Threat Levels, as determine by the Department of Homeland Security, the Hetch Hetchy Road and the entire area around the O'Shaughnessy Dam and Hetch Hetchy Reservoir will be closed to all traffic and visitation.

Yosemite Valley

El Capitan, Cathedral Beach, and Sentinel Beach Picnic Areas are closed one hour after sunset to one hour before sunrise, except for authorized administrative functions.

Public Use Limits

Badger Pass Ski Area

Up to 2300 ski lift tickets may be sold in one day for Badger Pass Ski Area.

An analysis of the slopes at Badger Pass Ski Area was done to determine optimum capacity without sacrificing skier safety.

Except administrative activities, the uphill lane from Chinquapin to Badger Pass Ski Area will be restricted when the parking lot at Badger Pass Ski Area fills to capacity. This road may also be restricted to one lane during times of heavy snow or traffic.

This restriction is necessary because of the physical capacity of the parking lot at Badger Pass Ski Area and to provide for public safety.

While Badger Pass is not in operation by the concessioner, the public will not be allowed to access the buildings, lifts, and ski area boundary.

This restriction is necessary for visitor safety around unoccupied buildings and equipment. This restriction is also necessary to protect private property, and environmentally sensitive wetland habitat

During non-operation of the Badger Ski Area, Between the time that Badger Pass winter operations have ceased in the spring and the time they resume in the fall/winter, the Badger Pass Parking Lot is closed to the public.

These restrictions are necessary to provide for the orderly management of the park. Administrative functions are exempt from this restriction.

Electric Personal Transportation Devices

Electric scooters, electric skateboards, electric skates, or any other similar electric transportation device designed to carry a single passenger and propelled or assisted by an electric motor are prohibited on all park roads and unpaved trails.

Additionally, electric bikes (e-Bikes) are permitted on park roads in compliance with adopted state laws.

This restriction is necessary to provide for the safety of visitors and motorists on curving roads, often with steep grades.

Glacier Point Road

The public use limits for the Glacier Point Road are as follows:

- Vehicles over 30 feet and/or vehicles pulling trailers are prohibited beyond the Sentinel Dome parking lot.
- Buses exceeding 30 feet in length are prohibited beyond the Badger Pass turnoff. Authorized park, park contractors and concessionaire vehicles are exempt.

These restrictions are necessary in order to protect vehicles from the safety risks posed by large vehicles and vehicles pulling trailers traveling this section of steep, narrow, winding road.

Glass Containers

Possession of a glass container within 50 feet of any riverbank, lakeshore, on the water, or in a vessel is prohibited.

This restriction is necessary for the protection of visitors who frequent these areas in bare feet.

Half Dome

The following permit restrictions are in effect for any person ascending any part of Sub Dome or any part of the Half Dome cables (see Sub Dome map in the appendix):

- Each person ascending Half Dome by way of Sub Dome must have a permit when the cables are in place (*typically from Memorial Day to Columbus Day, however, actual dates and time may vary depending on weather and environmental conditions*)
- Permits are valid from 12:01am to midnight for the date specified
- Permits are single use
- Up to 300 Permits will be issued daily
- Sale, duplication, or transfer of permits is prohibited
- Permits issued by cooperating agencies are not valid for ascending the Half Dome cables
- Group Leader, Alternate Group Leader or person name must be present when checked at Sub Dome check point.

These restrictions are necessary to preserve the wilderness experience visitors to Yosemite National Park's wilderness expect and to protect resources from overuse. Higher visitation numbers would have significant impacts to the visitors and resources.

Hetch Hetchy

Vehicles, or the combination of a vehicle and a trailer, exceeding 25 feet in length and/or 96 inches in width are prohibited on the Hetchy Road unless authorized in writing by the Superintendent. Authorized vehicles must provide a pilot vehicle and schedule the travel date and time with the area Ranger.

This restriction is required to provide for public safety because roads are narrow, and over-sized vehicles cannot safely negotiate the turns.

Mariposa Grove Welcome Plaza

All commercial buses visiting the Mariposa Grove are required to unload, pick up their passengers, and park only in areas designated by their Commercial Use Authorization (CUA).

All commercial buses over 21 feet in length are required to have a parking permit and must park in the Reserved Bus Lot. Commercial vehicles 21 feet or less in length may park in the Welcome Plaza without a permit.

All vehicles pulling trailers must park in the designated spaces in the Welcome Plaza parking lot. Non-commercial vehicles over 21 feet in length must park in the designated RV spaces in the Welcome Plaza parking lot.

These restrictions are necessary due to the limited parking at the Mariposa Grove. In order to provide for the orderly management of the park, designated areas, as defined in a commercial use agreement, have been established. Administrative functions are exempt from these restrictions.

Meadow Grazing

The following meadows have grazing use limits (see attached corresponding maps in appendix):

- Crescent Lake
- Hook Lake
- Isberg Pass Lake
- Miller Lake
- Kerrick Canyon
- Rodger's Lake
- Turner Meadow

In the areas marked as "closures" in the corresponding maps in the appendix, the following limits are applied:

- All hiking and stock traffic will be confined to the NPS trail system through the closed meadow areas.

When meadows are closed to grazing, the following conditions apply:

- Approved methods to prevent grazing in closed areas (high lining, electric fence, hand grazing, hobbling, or any combination thereof) will be used.
- Electric fences will be placed at least 100 feet from all avoidance areas.
- Fences should not be placed in areas that have been previously used by earlier season stock parties.
- Fences should avoid being placed on sensitive resources (wetlands, unstable banks, archeological resources, etc.).

Stock use is limited to designated access routes and stock holding areas when not grazing.

Supplemental feed may be used but at designated holding sites only. Supplemental feed must be commercially processed pellets, rolled grains, or fermented hay (e.g. Chaffhaye). This is required for all users, including administrative and concession operations.

These products have a high level of mechanical milling, heat treatment, and/or anaerobic fermentation that destroys seeds. Other feed products that have similar levels of processing that destroy nearly all seeds may be permitted. Baled or loose hay and compressed hay cubes, which have little to no processing, should not be used in wilderness.

The following apply to use by overnight stock groups:

- Overnight camping is limited to the area immediately adjacent to the preferred fire ring (see corresponding meadow map in the appendix)
- Overnight use of these meadows is limited to one stock party per night.

Additional restrictions apply to commercial operations engaged in grazing in these locations. See the Special Park Conditions section of the CUA permit.

*These restrictions are necessary to reduce potential impacts to the federally threatened Yosemite toad (*Anaxyrus canorus*) and the federally endangered Sierra Nevada yellow-legged frog (*Rana sierra*) – both listed in June, 2014. Some of the Kerrick Meadow closure can be reopened on a trial basis to allow grazing with certain precautionary measures remaining in place until the Wilderness Stewardship Plan and analysis are complete. A meadow grazing opening date will be established and posted on the Yosemite National Park wilderness conditions page at <http://www.nps.gov/yose/planyourvisit/wildcond.htm>*

Other-Power-Driven Mobility Devices

Only individuals with disabilities may use Other-Power-Driven Mobility Devices (OPDMD's) to include e-bikes in the park, however they are prohibited in undeveloped and designated wilderness areas. OPDMD users retain the right of way and duties applicable to any pedestrian, however, OPDMD users must yield to pedestrians. The only exception to this is entering or exiting elevators, where OPDMD users have the right of way.

OPDMD's may be used under the following conditions:

- Operators must be 16 years or older
- The OPDMD displays a universal handicap decal (available at visitor centers)
- OPDMD must be a zero-emissions vehicle
- The OPDMD is no greater than 36 inches in width at its widest point
- OPDMD speeds may not exceed 5 miles per hour
- Group size is limited to no more than four OPDMD's

OPDMD's must be equipped with the following safety mechanisms:

- Front, rear, and side reflectors
- A system that enables the operator to bring the device to a controlled stop

- If operating an OPDMD between half an hour after sunset to a half an hour before dawn, a lamp emitting a white light that is visible from 300 feet in front of the OPDMD is required while the OPDMD is in motion.
- A sound emitting device that can be activated from time to time by the operator, to alert nearby persons, as appropriate.

These restrictions are necessary due to safety considerations regarding the lack of a paved shoulder, bicycle lane, or the presence of fog lines. The use of OPDMD's by able bodied persons is prohibited in the park because they meet the definition of a motor vehicle, and off road travel is prohibited, the only exception being those for individuals who meet the criteria of a disabled person as defined by the Americans with Disabilities Act.

Parking

Parking restrictions in **Yosemite Valley** are applicable from midnight to 6:00am in the following locations:

- Village Store Parking
- Church Bowl Picnic Area
- Yosemite Valley Lodge (without a permit)
- Yosemite Falls parking lot (without a permit)

Camp 4 parking requires a parking permit 24 hours a day.

These restrictions are necessary to provide for the orderly management of the park. Administrative functions are exempt from this restriction.

Passenger Buses

Passenger buses are subject to the following conditions/restrictions on roads within Yosemite National Park:

- Buses must shut down their engines when not underway. Idling must not exceed 5 minutes, or idling must not exceed 15 minutes if the driver is completing the legally required pre-trip inspection. Yosemite shuttle buses are exempt.
- Buses are prohibited in the parking areas for Swinging Bridge and Big Oak Flat Information Station.
- Buses may not park in areas designated for automobile parking
- Buses are prohibited from parking in residential areas
- Buses over 45 feet in length and 102 inches in width are prohibited on park roads.

These restrictions are necessary to eliminate additional exhaust fumes added to the air and to allow for the enjoyment of the peace and tranquility of the park. Bus size is restricted because buses over these dimensions cannot safely navigate many of the park roads and

lead to congestion at pullouts and parking areas. Bus parking is restricted to certain areas because it causes excessive congestion, parking problems, and traffic hazards. Additionally, the large number of visitors cannot be accommodated by existing restrooms and other facilities. Due to the nature of services provided by the shuttle buses, they are excluded from the requirement.

All commercial buses visiting **Yosemite Valley**, not including vans, are required to unload, pick up their passengers, and park only in areas designated by their commercial use authorization.

These restrictions are necessary due to limited parking in Yosemite Valley and the need to control large groups disembarking in congested areas. In order to provide for the orderly management of the park, designated areas, as defined in a Commercial Use Agreement (CUA), are established.

Commercial Passenger Vans, mini-buses and motorcoaches are prohibited from stopping at Fern Springs.

This restriction is necessary due to the sensitive nature of the Fern Spring area, and the impact of large groups walking around the spring.

Paved Bikeways

Speed may not exceed 15 miles per hour on paved trails designated as “paved bikeways” on the official park brochure regardless of transportation method (e.g. bicycles, e-bicycles, electric scooters, skateboards, etc.)

Bicycles, skateboards, scooters, or any other similar device with a combustible engine are prohibited on the paved bikeways.

This restriction is necessary to provide for the safety of visitors and to accommodate multiple user groups on crowded bikeways.

Unmanned Aircraft

Launching, landing, or operating an unmanned aircraft from or on lands and waters administered by the National Park Service within the boundaries of Yosemite National Park is prohibited except as approved in writing by the Superintendent.

This restriction is necessary to protect the public from hazards and preserve the park’s natural, aesthetic, and scenic values. The use of machine airborne or controlled devices, such as an Unmanned Aircraft System (UAS) or drone, has the potential to interfere with public safety by posing as in-flight hazard to emergency helicopter use in the park. The use of these devices also has the potential to disrupt wildlife by interrupting migration, nesting, mating, and hunting activities to include, but not limited to, protected species such as the Peregrine Falcon. This restriction is in accordance with NPS Management

Policy 8.2 which prohibits recreational uses that conflict with the scenic values and view sheds that the park was designated to protect and the associated activities in which individuals seek solitude and tranquility with an expectation of privacy. Furthermore, the use in designated Wilderness Areas violates the Wilderness Act, which prohibits motorized equipment. An interim measure may be put in to place at a later date after the park administration evaluates the appropriateness of this new use on a long-term basis.

Wilderness Group Sizes

The public use limits for overnight wilderness use are managed by a system of trailhead quotas, and daily overnight entries will not exceed the established quotas.

This restriction is necessary to provide for public use while protecting natural and cultural resources.

The group size limits are:

- 35 person limit per group for day use travel on established trails
- 15 person limit per group for overnight travel on established trails
- 15 person limit per overnight campsite use
- 8 person limit per group for all off trail travel (more than ¼ mile off established trails or roads) whether day or overnight use.

Any group exceeding size limitations must split into subgroups and comply with the above size limitations. Subgroups must begin at different trails heads or on separate days, and the subgroups must travel and camp at least ¼ mile apart at all times.

These restrictions are necessary as groups that exceed these limits would negatively impact the use and enjoyment of wilderness areas by other smaller groups.

Yosemite Valley access

Visitors may enter Yosemite Valley via vehicle until westbound traffic backs up from Lower Yosemite Falls to Curry Village four-way intersection, all day use parking spaces have been filled, and/or the 18,710 person capacity is reached.

Closures

Boating

Motorized boats are prohibited in all lakes and free flowing rivers, creeks, and streams within Yosemite National Park.

These restrictions are necessary to preserve the natural characteristics of the lakes for public enjoyment and safety, and to ensure that the management of the park's lakes meets the needs of all park users, including but not limited to photographers, fishermen, and those wishing to see undisturbed sections of lakes. This restriction is in direct support of the Raker Act, water quality provisions and the Filtration Avoidance Regulation, and is necessary to maintain the high quality of water found in the Hetchy and Lake Eleanor Reservoirs as a clean municipal drinking water source free from microbial pathogens and other contaminants

Non-motorized vessels are only permitted for use in free flowing rivers, creeks, and streams within Yosemite National Park under the following conditions:

Merced River:

- From the headwaters to Little Yosemite Valley Campground
- From Clark's Bridge to Stoneman Bridge when flows are below 4.5 feet as measured at the Pohono Bridge river gauge at 8:00am on the day the river use is to occur
- From Stoneman Bridge to El Capitan Bridge when flows are below 7.0 feet as measured at the Pohono Bridge river gauge at 8:00am on the day the river use is to occur
- From El Capitan Bridge to the park boundary when flows are Above 3.4 feet as measured at the Pohono Bridge river gauge at 8:00am on the day the river use is to occur

Tuolumne River:

- From Pothole Dome to Pate Valley

South Fork Merced River:

- From the headwaters to 100 yards upstream from the Wawona impoundment.
- From downstream of the Wawona impoundment to the park boundary.

For all boating:

- Vessels must be in good condition and rated for the classification of water users are intending to navigate.
- Use of a trailer or wheeled device to launch or retrieve a vessel is prohibited.
- Dragging vessels on vegetation is prohibited.
- A personal floatation device must be worn while the vessel is underway in accordance with state laws.
- A personal floatation device is required to be worn for all boaters above Little Yosemite Valley, below El Capitan Bridge, on the Tuolumne River, and anywhere on the Merced River when the flow is above 4.0 feet as

measured at the Pohono Bridge river gauge at 8:00am on the day the river use is to occur

Boaters must take precautions to ensure their vessel is free of invasive species.

Launching and retrieval is only permitted at the sites listed under 36 CFR § 3.8(a)(2) of this document.

These restrictions are necessary to preserve the natural characteristics of the rivers, creeks, and streams for public enjoyment and safety, and to ensure that the management of the park's rivers meets the needs of all park users, including but not limited to photographers, fishermen, and those wishing to see undisturbed sections of free flowing river. By partitioning the rivers and placing constraints on certain activities, each visitor group can be accommodated, while providing for both visitor and resource protection, and this action has been determined to be neither a major shift in policy nor a significant change to previous regulatory efforts

Construction Zones

Areas within the park that are designated as construction or demolition zones are closed to the public. These areas will be identified by signage indicating the closure.

This restriction is necessary to protect the public from the hazards associated with construction and demolition.

Firearm Ranges

All firearm ranges in the park are closed to the public. Firearms ranges are for law enforcement use only.

This restriction is necessary for the safety of park visitors, to ensure unfettered access for law enforcement training, and to ensure compliance with other National Park Service policies.

Hetch Hetchy

At High and Severe Threat Levels – The Hetch Hetchy Road and the entire area around the O'Shaughnessy Dam and Hetch Hetchy Reservoir will be closed to public vehicles traffic and visitation when the Department of Homeland Security issues an Imminent Threat Level warning to the nation or to Yosemite National Park.

Additionally, the area between the O'Shaughnessy Dam and the administrative dirt road leading to areas below the dam is closed to public access, and the Hetch Hetchy boat dock is closed to public access.

These restrictions are necessary for the orderly management of the park and the security of associated facilities.

Public access is prohibited below the high water mark of Hetch Hetchy reservoir (see the High Water Mark map in the appendix).

This restriction is necessary to maintain the high quality of water found in the Hetchy and Lake Eleanor Reservoirs as a clean municipal drinking water source free from microbial pathogens and other contaminants.

Hetch Hetchy Reservoir is closed to all vessels.
Lake Eleanor is closed to all motorized vessels.

These restrictions are in direct support of the Raker Act, Water Quality Provisions, and the Filtration Avoidance Regulation, and it is necessary to maintain the high quality of water found in the Hetchy and Lake Eleanor Reservoirs as a clean municipal drinking water source free from microbial pathogens and other contaminants.

Mariposa Grove

The road between the Transportation Hub and the Lower Grove is closed to all vehicles during shuttle bus operating hours. Private vehicles displaying an Accessible license plate or ADA Tag, may drive up the road and park in available ADA spaces at the Lower Grove and at the Grizzly Giant ADA parking lots.

All vehicles over 21' in length are prohibited on the Mariposa Grove Road between the Transportation Hub and the Lower Grove.

Vehicles pulling trailers are prohibited on the Mariposa Grove Road between the Transportation Hub and the Lower Grove.

Parking

Parking a motor vehicle off a paved surface unless otherwise designated is prohibited.

This restriction is necessary to provide for the orderly management of the park and protection of park resources. Administrative functions are exempt from this restriction.

Park Roads

The following roads are closed seasonally due to snow and ice:

Glacier Point Road, except between Chinquapin and Badger Pass Ski Area is open when the ski area is open.

Tioga Road, east of Nature Bridge.

Chowchilla Mountain Road.

Mariposa Grove Road (when required due to conditions).

These restrictions are necessary to provide for public safety and use, as winter conditions make for hazardous driving and facilities are only opened and maintained seasonally.

The Happy Isles Road from the Happy Isles trailhead parking area to the concession stables, including the Mirror Lake Road, is restricted to shuttle buses, vehicles displaying a handicap placard, pedestrians, and bicycle use. Motor vehicle traffic in the restricted area shall be one-way in a counterclockwise fashion, entering at the Wilderness Trailhead parking area and exiting at North Pines Campground.

These restrictions are necessary to provide for visitor safety on a multi-use roadway that is heavily used by pedestrians, bicycles and stock.

The Tuolumne Grove Road, Eleven-Mile Road, Meadow Loop, Four Mile Road, signed service roads, and gated roads are closed to public motor vehicle traffic.

These restrictions are necessary for natural resource protection and for public safety, as these roads are only maintained for fire and emergency access and not for public access.

From October 15 until the roads open to overnight use the following year, leaving vehicles unattended at any time from sunset to sunrise along the following roads or at trailheads or any other areas accessible from these roads is prohibited:

- **Tioga Road** from the gate at Nature Bridge to the eastern park boundary at Tioga Pass.
- **Glacier Point Road** east of Badger Pass Ski Area.

These restrictions are necessary to prevent the vehicles of overnight users from being buried deep in snow for the entire winter. Once these roads receive snow sufficient to close them, they may remain closed until the following spring.

During the seasonal road opening, the entire **Tioga Road**, from the gate at Nature Bridge to the eastern park boundary at Tioga Pass, is closed to overnight parking from sunset to sunrise. This closure is in effect until the entire Tioga Road is opened to vehicular Traffic.

This restriction is necessary to provide for the orderly management of the park and the opening of facilities.

Peregrine Falcon Nesting Protection

The areas identified by cliff name in the Area Protection – Peregrine Nesting Areas are closed from March 1 to July 15 each year or until the young falcons of the current year fledge. Route

closures are updated periodically and can be found at [Climbing Closures - Yosemite National Park \(U.S. National Park Service\) \(nps.gov\)](#)

This restriction is necessary to protect peregrine falcon aeries and to assist in the successful reproduction of peregrine falcons.

Picnicking

The following areas are closed to picnicking:

- All closed **Yosemite Valley campgrounds**
- All open **Yosemite Valley campgrounds** (except from October 15 – March 1st)
- **Wawona, Hodgdon Meadow, and Crane Flat campgrounds** during reservation period, when posted.

These restrictions are necessary for the orderly management of the park, use of its resources, and to ensure the availability of the campsite to registered campers.

Swimming and Bathing

The following areas are closed to swimming and bathing:

- The pool of the Wawona Domestic Water Intake and the area within 100 yards upstream
- Hetch Hetchy Reservoir and one mile from the high-water mark of the reservoir along any tributary directly flowing into the reservoir.
- Lake Eleanor Reservoir, when posted
- Dana Fork of the Tuolumne River above the domestic water source intake
- Emerald Pool and the Silver Apron downstream to the brink of Vernal Fall
- May Lake near High Sierra Camp water system intake.

These restrictions are necessary to provide for visitor safety and to maintain the high level of water purity for human consumption, in compliance with other laws (Raker Act).

Wawona Area

When the Wawona Hotel golf course is operating, the course, including the apple orchard, is closed to all persons that are not with an authorized golfing party.

This restriction is necessary to prevent people from walking onto the course and risking injury from golf balls or walking onto the course and interfering with authorized commercial activities.

Summit Meadow south of Glacier Point Road is closed to public access when Glacier Point Road is open.

This restriction is necessary to reduce impact to species of frogs, who are Federal Candidate Species for listing under the Endangered Species Act, and their habitats.

Yosemite Valley

The Mist Trail, the John Muir Trail, and Four Mile Trail are closed when signed.

Slopes along the Merced River, woodlands, and meadows are closed when they are fenced or signed.

These restrictions are necessary to restore vegetation and protect natural resources.

Under the authority of 36 Code of Federal Regulations 1.5(a)(2), the following areas have been designated for a specific use or activity, under the conditions and/or restrictions as noted:

Badger Pass Ski Area

Non-concessions operated sledding, inner-tubing, and tobogganing is prohibited within the ski area boundary when Badger Pass Ski Area concession is operating.

These restrictions are necessary as sledding is non compatible with downhill skiing and poses a hazard to sledders and skiers, as well as other ski area visitors.

Bridges and other structures

Jumping or diving from any bridge or from O'Shaughnessy Dam is prohibited.

This restriction is necessary for the safety of both jumpers and boaters (who are threatened by people jumping from bridges in areas with vessel use) and for the protection of fish and other components of aquatic ecosystems which experience the detrimental effects of water turbidity and shock waves which are caused by people jumping from bridges.

Affixing any rope, line, or other device to a bridge or structure is prohibited.

This restriction is necessary to protect persons and structures from the hazards posed by ropes and lines.

Climbing

Camping, bivouacking, or sleeping overnight in the vicinity of the base of any cliff, mountain or route to be climbed, and which is located outside designated Wilderness, is prohibited. 36 CFR §2.10(a); 36 CFR §2.10(b)(10)

This restriction is necessary for orderly management of the park and to provide for consistency with camping and wilderness permit requirements.

The use of any motorized drilling device for the purpose of placing bolts or climbing equipment is prohibited.

This restriction is necessary to protect the wilderness character of climbing routes and is in accord with the Wilderness Act which prohibits motorized equipment in all wilderness areas.

The possession of a motorized drill in a non-developed area is prohibited.

This restriction is necessary to protect the wilderness character of climbing routes and is in accord with the Wilderness Act which prohibits motorized equipment in all wilderness areas.

The use of glue, epoxy, cement, or any other adhesive to attach, reinforce, or alter handholds and/or footholds for rock climbing is prohibited.

This restriction is necessary to protect the natural features of various climbing routes.

Fixed or temporary rock climbing anchors, but not climbing ropes, whether used for ascents or descents, may be left in place indefinitely. 36 CFR §2.22(a)(2)

This exception is necessary to allow safe rock climbing (a well-established visitor activity in the park) while minimizing the overall impact of rock climbing on the resource and other visitor groups.

Unattended anchors may be removed and impounded.

Commercial Guided Climbing of any type is not authorized under a Commercial Use Authorization or Special Use Permit. Currently, only Yosemite Hospitality is authorized to conduct Guided Climbs, pursuant to their concessions contract.

This restriction is necessary for orderly management of the park and to provide for consistency with current concessions contract, Wilderness Stewardship and Climbing Plans.

Commercial Photography/Filming:

The following types of low-impact filming activities may occur in areas of the park open to the public without a permit and without advance notice to the NPS:

- Outdoor filming activities (outside of park areas managed as “wilderness”) involving five persons or less and equipment that will be carried at all times, except for small tripods used to hold cameras.

The organizer of any other type of filming activity must provide written notice to the Superintendent least 10 days prior to the start of the proposed activity. Based upon the information provided, the Superintendent may require the organizer to apply for and obtain a permit if necessary to:

- Maintain public health and safety;
- Protect environmental or scenic values;
- Protect natural or cultural resources;
- Allow for equitable allocation and use of facilities; or
- Avoid conflict among visitor use activities.

If the Superintendent determines that the terms and conditions of a permit could not mitigate the concerns identified above in an acceptable manner, the Superintendent may deny a filming request without issuing a permit. The Superintendent will provide the basis for denial in writing upon request.

The NPS will consider these requests and process permit applications in a timely manner. Processing times will vary depending on the complexity of the proposed activity. If the organizer provides the required 10 day advance notice to the NPS and has not received a written response from the NPS that a permit is required prior to the first day of production, the proposed filming activities may occur without a permit.

If it is determined by the NPS that a film permit application is necessary, please use NPS form 10-930 located on the park’s website under Special Use Permits to apply. Again, if any of the following apply to your filming activity, a film permit application is necessary.

- Your film crew consists of more than five persons;
- All filming equipment (except small camera tripods) that cannot be carried at all times; and/or
- This is a request to film in an area managed as “wilderness.”

Fixed Tension Ropes (Slacklines)

Installing or using any fixed tensioned ropes and webbing (slack lines), and other devices is permitted under the following conditions: 36 CFR §2.22(a)(2), 36 CFR §5.13

- It does not create a hazardous condition or interfere with the orderly management of the park.
- It does not cross a road or trail.
- It does not cross over any lake or watercourse.
- It must not be attached to oak trees.

- Trees used as anchors must be padded so as to minimize damage to the trees.
- Any unattended fixed line must be tagged with owner name, contact number and date fixed.
- Fixed Tension Ropes (slacklines) lines left unattended for greater than 24 hours may be removed or impounded.

Slacklines may be left unattended in the following circumstances:

- Park residents may leave slack lines unattended provided the slack lines are:
- Approved by the Superintendent or the Superintendent's designee
- Installed within 200 feet of their housing unit
- Comply with all other slack line restrictions

Park visitors registered in **Camp 4** may leave slack lines unattended provided the slack lines are:

- Tagged to identify the registered camper
- Installed within 200 feet of the boundary of Camp 4 for the period of their stay in Camp 4
- Comply with all other slack line restrictions

These restrictions are necessary as fixed or tension lines can present a significant hazard to other visitors and negatively impact the scenic value of the resource; however, the repeated installation of slack lines in the same area may cause more resource damage than lines left in place. Additionally, slack lines have caused significant damage to trees in the park while oaks are declining in parts of California and the groves in Yosemite Valley are not reproducing successfully.

Giant Sequoias

The climbing or attempting to climb any giant sequoia tree (*Sequoiadendron giganteum*) is prohibited.

This restriction is necessary to provide for the protection of natural resources.

Kites

Kite flying is limited to kites measuring less than 1,300 square inches and which are tethered by string or similar material less than 150 feet in length. Ahwahnee Meadow, El Capitan Meadow, Big Meadow, and Tuolumne Meadows are closed to kite flying regardless of size.

This restriction is necessary to ensure the safety of low flying aircraft being used in SAR, medical, fire, or other emergency situations.

Smoking/Vaping

Smoking of cigarettes, cigars, use of e-cigarettes and similar devices are prohibited:

- In all public buildings, including concession buildings.

- Within 25 feet of any building, except those used as a single family residence.
- Inside shared housing.
- Other areas as posted.

This restriction is necessary as smoke from burning tobacco and vapors from e-cigarettes may contain harmful substances (electronic cigarettes contain at least ten chemicals known to cause cancer or birth defects, according to a report from the California Department of Public Health) and restricting the use of e-cigarettes to areas where smoking is permitted is the least restrictive method of controlling while still allowing their use.

Soaps and other detergents

The use of any soap, detergent, or shampoo (biodegradable or otherwise) is prohibited in all waters of the park. 36 CFR 2.14 (a)(6)

This restriction is necessary to provide for the highest water quality standards and ecosystem health; the introduction of man-made products may alter water quality and adversely affect micro or macro organisms.

Woodcutting

Wood cutting is permitted with a permit in the following park areas: **The Wawona Wood Lot, The Hodgdon Wood Lot, the Foresta Wood Lot, White Wolf Wood Lot** and the **Valley Wood Lot**.

The use of chainsaws is restricted to daylight hours.

The **Valley Wood Lot** is closed from April 15–October 31 annually.

The use of the **Valley Wood Lot** will be restricted to 10:00am-6:00pm when it is open. Administrative activities are exempt.

This restriction allows for the reduction of fuels within the park, but also limits the sound disturbances that may affect park users.

Wildlife

The use of any audio or mechanical device to attract wildlife is considered a violation of 36 CFR § 2.2(a)(2)

This restriction is necessary as audio or mechanical devices used to attract wildlife may induce stress and disrupt mating / nesting activities of wildlife.

Willfully approaching, remaining, viewing, or engaging in any activity within 50 yards of bears, or within any distance that disturbs, displaces, or otherwise interferes with the free unimpeded movement of wildlife, or creates or contributes to a potentially hazardous condition or situation is prohibited.

This restriction is necessary to ensure to the safety of both visitors and wildlife.

The entire park is closed to the viewing of wildlife with the use of an artificial light. 36 CFR § 2.2(e).

This restriction is necessary as the viewing of wildlife with an artificial light may induce stress and disrupt mating / nesting activities of wildlife.

Yosemite Valley

The Ceremonial Roundhouse, the Sweat House, and the Chief's House in the Indian Cultural Village are closed to public entry.

These restrictions are necessary to protect the spiritual sanctity of these structures still used by the Miwok.

36 CFR §1.6 – ACTIVITIES THAT REQUIRE A PERMIT

(f) The following is a compilation of those activities for which require a permit from the superintendent:

§1.5(d) The following activities related to Public Use Limits:

Half Dome

Ascending any part of the Sub Dome or any part of the Half Dome cables on designated days as described in section I of the Compendium.

Conditions of the permit

- Each person ascending Half Dome by way of the Sub Dome, if traveling during the time when the cables are up (approximately May-October) must have a permit.
- Permits are valid from 12:01 am to midnight for the date specified.
- Permits are single use.

Sale, duplication or transfer of permits is prohibited.

§2.1 Wood Cutting.

§2.4(d) Carrying or possessing a weapon, trap, or net.

§2.5(a) Specimen collecting (taking plant, fish, wildlife, rocks, or minerals.)

§2.10(a) The following camping activities

- A permit is required to camp in Yosemite National Park.
- Permits may not be transferred, sold or purchased beyond initial issuance.
- Refer to Section III: General Regulations of the compendium for further designations and conditions related to camping.

§2.12 Audio Disturbances

(a)(2) Operating a power saw in developed areas.

(a)(3) Operating any type of portable motor or engine, or device powered by a portable motor or engine in non-developed areas.

(a)(4) Operating a public address system in connection with a public gathering or special event for which a permit has been issued pursuant to §2.50 or §2.51.

§2.17 Aircraft & Air Delivery

(a)(3) Delivery or retrieval of a person or object by parachute, helicopter or other airborne means.

(c)(1) Removal of a downed aircraft or parts.

§2.23(a) Recreation Fees

- Waiving fees for educational or scientific visits (pursuant to part 71.13(c) and 71.13(d)).
- Waiving fees for park employees or residents (pursuant to part 71.13(c) and 71.13(d)).

§2.37 Soliciting or demanding gifts, money, goods, or services (pursuant to the terms and conditions of a permit issued under §2.50, §2.51 or §2.52).

§2.38 Explosives:

- Using, possessing, storing, or transporting explosives or blasting agents.
- Using or possessing fireworks.

§2.50(a) Conduct a sports event, pageant, regatta, public spectator attraction, entertainment, ceremony, or similar event.

§2.51(a) Public assemblies, meetings, gatherings, demonstrations, parades and other public expressions of views involving more than 25 people.

§2.52(a) Sale or distribution of printed matter involving more than 25 people.

§2.60(b) Livestock use.

§2.61(a) Residing on federal lands.

§2.62 Memorialization:

(a) Erection of monuments (requires approval from Regional Director).

(b) Scattering human ashes from cremation.

§4.11(a) Exceeding established vehicle load, weight and size limits.

§5.1 Advertising (displaying, posting or distributing).

§5.2(b) Selling intoxicants on private land (requires approval from Regional Director).

§5.3 Engaging in or soliciting any business (requires a permit, contract, or other written agreement with the United States, or must be pursuant to special regulations).

§5.4 Commercial transportation of passengers by motor vehicles.

§5.5 Commercial filming/photography

§5.6(c) Using commercial vehicles on park area roads (the superintendent shall issue a permit to access private lands within or adjacent to the park when access is otherwise not available).

§5.7 Constructing buildings, facilities, trails, roads, boat docks, paths, structures, etc.

§5.10(a) Operating eating, drinking, or lodging establishments in certain park areas.

§6.9(a) Operating a solid waste disposal site.

Part 7 Special Regulations

§7.16 Yosemite National Park

(c) Powerless flight.

(h)(1) Eating and drinking establishments and sale of food and drink.

(j) Domestic water supplies and sewage disposal systems on private lands within Yosemite National Park.

(l) Motor Vehicles operating exclusively in the park.

(m) Trucking permits issued in emergencies.

GENERAL REGULATIONS

PART 2: RESOURCE PROTECTION, PUBLIC USE AND RECREATION

36 CFR §2.1 – PRESERVATION OF NATURAL, CULTURAL AND ARCHEOLOGICAL RESOURCES

(a)(4) Dead wood on the ground (other than giant sequoia wood) may be collected for use as fuel for campfires within the park when the wood is located:

- Below 9600 feet elevation
- Less than 6 inches in diameter in undeveloped areas
- Outside Yosemite Valley

Within **Yosemite Valley**, firewood may be collected within the campground boundaries. Where the campground boundary is not marked, firewood may be collected within 50 feet of a campsite as measured from its food locker.

(c)(1), (c)(2) The following fruits, nuts, berries, or unoccupied seashells may be gathered by hand for personal use or consumption, in accordance with the noted size, quantity, collection sites and/or use or consumption restrictions:

- Blackberries: 1 pint per person per day, wherever found, for immediate consumption
- Himalayan blackberry: unlimited quantity
- Raspberries: 1 pint per person per day, wherever found, for immediate consumption
- Elderberries: 1 pint per person per day, wherever found, for immediate consumption
- Strawberries: 1 pint per person per day, wherever found, for immediate consumption
- Thimbleberries: 1 pint per person per day, wherever found, for immediate consumption
- Huckleberries: 1 pint per person per day, wherever found, for immediate consumption
- Fungi, Edible: 1 pint per person per day, wherever found, must be cut (not pulled)

The following may be gathered and transported from the collection site for non-commercial use:

- Apples
- Pears

36 CFR §2.2 - WILDLIFE PROTECTION

(d) The transporting of lawfully taken wildlife through the park is permitted under the following conditions and procedures:

- The carcass must be tagged in accordance with state and federal law.
- Game must be kept out of sight as much as practicable.

- Legally taken game must be transported from the entrance gate to the exit gate on the public road system in the most direct route and are not allowed overnight in the park, except where lawfully taken game is possessed by a resident within the park.

The transportation of wildlife is not allowed on any portion of the Yosemite trail system except the Kibbie Ridge to Boundary Lake Trail on the segment between Sachse Spring and Styx Pass.
(e) The entire park is closed to the viewing of wildlife with the use of an artificial light.

36 CFR §2.3 – FISHING

(the State of California fishing regulations found at [[California Freshwater Sport Fishing Regulations: 2020–2021](#)] apply within Yosemite National Park, except, as set out in 36 CFR 2.3(d) and as set out below:

Except for the designated areas set out below, all waters within Yosemite National Park are open to fishing all year.

Fishing from any piers or bridges (vehicle, pedestrian, or stock) is prohibited within the boundaries of Yosemite National Park.

The prohibition of fishing from bridges is necessary to protect the safety of those fishing as well as the safety and enjoyment of other visitors, whether on foot, in vehicles, or in or along the streams and rivers that the bridges cross.

Fishing from the top of O’Shaughnessy Dam is prohibited.

The use of live, dead or scented bait is prohibited in Yosemite National Park; “live, dead or scented bait” is defined as any natural or manufactured product or device that is used to alert and attract fish by sense of taste or smell, including any product or device to which scents or attraction agents have been added or externally applied. Bait includes, but is not limited to; scented and flavored liquid paste or gel, scented natural or artificially manufactured fish eggs, and applies to traditional organic baits including but not limited to all worms, grubs, crickets, leeches, stink baits, insects, crayfish, human food, pet food, fish, fish parts, and fish eggs.

Lead weights used on fishing lines shall not exceed ¼ ounce per line.

The transport of live fish any distance is prohibited within Yosemite National Park and the El Portal Administrative Site.

Bag and possession limits: Bag limit 5 per day (all trout species) and possession limit 10 at one time (all trout species) except as set out below.

Specific Rules for Designated Areas

Merced River – from Happy Isles Footbridge downstream to the western boundary of the Park (approximately at the Yosemite View Lodge); and **South Fork Merced River** – from the headwaters at Triple Divide Peak to the western boundary of the Park (approximately ½ mile east of the Rush Creek Trailhead in the Sierra National Forest).

- Open to fishing from the last Saturday in April to November 15.
- Only artificial lures with single barbless hooks may be used.
- Rainbow trout: all catch and release; zero (0) bag and possession limit.
- Brown and Brook Trout: No daily bag limit or possession limits and no minimum size-- brown trout and brook trout must be retained and not released.

Tuolumne River - from the O'Shaughnessy Dam downstream to western boundary of the Park (approximately at the Canyon Ranch Ranger Station)

- Only artificial lures with barbless hooks may be used.
- From the last Saturday in April to November 15:
 - Maximum size limit of 12 inches total length (all species).
 - Daily bag limit – two (2) trout (all species) per day.
 - Possession bag limit – two (2) trout (all species) in possession.
- From November 16 through the Friday preceding the last Saturday in April:
 - Daily bag limit – zero (0) trout (all trout species) per day.
 - Possession bag limit – zero (0) trout (all trout species) in possession.

Frog Creek – defined as upstream from the where the creek enters Lake Eleanor for ½ mile to the first waterfall and along the shore of Lake Eleanor for 200 ft. from where the creek enters the Lake.

Frog Creek and the mouth of Frog Creek are closed to all fishing activities from Nov. 15th through June 14th. The closure will extend up Frog Creek for ½ mile to the first waterfall, including the pool below the waterfall. The closure will extend 200 ft. from the mouth of Frog Creek out onto Lake Eleanor and along its shore for 200 ft. from the creek's mouth.

- Closed to all fishing activities from November 15 to June 14 of each year.

Adair Lake and Hanging Basket Lake – open to fishing year-round but with the following restrictions:

- Only artificial lures with single barbless hooks may be used.
- Daily bag limit of – zero (0) trout (all species) per day.
- Possession bag limit of – zero (0) trout (all species) in possession.

These area specific rules – limits on types or lures and prohibition of live bait; bag and possession limits; the requirements for catch and release of native species and not releasing non-native species; and – are necessary to help sustain native fish populations, including controlling the spread of non-native fish. In 2020 California Department of Fish and Wildlife

amended its regulations and lifted many of the area specific limits of the types of amounts of fish that can be taken and possessed. Based on the need to protect native populations, the NPS is maintaining the previous controls and expanding the locations, based on current data, in order to continue to protect those fish populations.

36 CFR §2.4 – WEAPONS, TRAPS, AND NETS

(e)(2) The carrying of weapons must be in compliance with state law. The Superintendent may issue a permit to carry or possess a weapon, trap, or net under the following circumstances:

- To persons in charge of pack trains or saddle horses, emergency use is meant solely for the use of dispatching injured stock.
- The weapon must remain unloaded until there is a circumstance in which an animal must be dispatched.

36 CFR §2.5 – RESEARCH SPECIMENS

(a) Taking plants, fish, wildlife, rocks, or minerals except in accordance with other regulations in this chapter or pursuant to the terms and conditions of a specimen collections permit, is prohibited.

Qualifying researchers must be in compliance with the General Condition for Scientific Research and Collecting Permit as described under the National Park Service Research Permit and Reporting System.

All environmental compliance issues (e.g. categorical exclusions), and minimum requirement analysis for research conducted in the wilderness, must be resolved prior to commencement of specimen collecting.

36 CFR §2.10 – CAMPING and FOOD STORAGE

(a) The sites and areas listed below have been designated for camping activities as noted. A permit system has been established for certain campgrounds or camping activities, and conditions for camping and camping activities are in effect as noted:

Camping is permitted for not more than a total of 30 days in any calendar year, provided that during the period from May 1 to September 15 inclusive, camping is limited to a total of 14 days. During the same period, camping in Yosemite Valley and Wawona areas is limited to not more than a total of 7 days.

Non-Wilderness

Camping in Non-Wilderness areas of the park is permitted only in the following designated camps:

Family Sites: Upper Pines, Lower Pines, North Pines, Wawona, Bridalveil Creek, Crane Flat, Hodgdon Meadow, Tamarack Flat, White Wolf, Yosemite Creek, Porcupine Flat, and Tuolumne Meadows.

Walk-in Campgrounds: Camp 4 and some sections of Hodgdon Meadow campground.

Backpackers Campgrounds:

Backpackers' campgrounds are intended for use by visitors in possession of an overnight wilderness permit or for visitors arriving in the park by foot, bicycle, or bus. Wilderness permit holders may stay in a backpackers' campground the night prior to their hiking start date and the night after returning from each overnight Wilderness trip, but not between the start and end date.

Backpacker campgrounds are located in Yosemite Valley, Tuolumne Meadows, Hetch Hetchy, and White Wolf.

Users arriving in the park by foot, bicycle, or bus may stay in each backpackers' campground for a limit of one night.

Wilderness permit holders entering or leaving Yosemite and hiking through Tuolumne Meadows (e.g., John Muir Trail and Pacific Crest Trail through hikers) may stay in the backpackers' campground at Tuolumne Meadows for one night during their wilderness trip when the campground is open. If the Tuolumne Meadows Post Office is closed, such backpackers may stay for one night in the backpackers' campground in Yosemite Valley if resupplying in Yosemite Valley. Continuation of the wilderness trip must be on the specified conditions of the wilderness permit.

Group Campsites:

Group campsites are located in Wawona, Bridalveil Creek, Hodgdon Meadow, and Tuolumne Meadows.

Horse Campsites:

Horse campsites are located in Wawona, Bridalveil Creek, Tuolumne Meadows, and Hetch Hetchy.

When an individual pays a camping fee, occupies a campsite, or registers in a campground, the following conditions are in effect (under 2.10(c) violating these conditions is prohibited and the permit may be suspended or revoked):

General Campground Regulations

- Check-out time in all campgrounds is 12:00pm (noon) on the day the permit expires. After check-out time, any unattended property remaining in a site may be impounded immediately. (See Section 2.22)
- Camp only in established sites in designated campgrounds.

- A maximum of six occupants are allowed per site in Family Sites.
- Between the hours of 10:00pm and 6:00am sites are to be occupied only by those registered with that site.
- Each Walk-In and Backpacker Camp user must register individually.
- Campsite registration must occur within 30 minutes of arrival.
- Reserving or holding campsites for others in non-wilderness campgrounds operating on a first-come, first-served basis is prohibited.
- Generator use is permitted only between the hours of:
 - 7:00am to 9:00am
 - 12:00pm to 2:00pm
 - 5:00pm to 7:00pm
- Camping wastewater must be dumped into utility sinks at restroom units when provided.
- When sinks are not provided, wastewater must be dumped at least 100 feet from lakes, rivers, or creeks.

Vehicles in Campgrounds

- Campground parking permits must be displayed on all vehicles parked in campground parking areas with the campground name, site number, and valid dates visible through the windshield unless other requirements are posted at the campground kiosk.
- A maximum of two vehicles or four motorcycles are allowed per site in Family Sites.
- A maximum of two vehicles and two trailers are allowed per site in Horse Camps.
- A maximum of five vehicles or ten motorcycles are allowed per site in Group Camps.
- Groups are not permitted to park motorhomes, trailers, campers, or other recreational vehicles in group campsite parking areas.
- Where parking pads are provided, vehicles must be parked with all wheels on the pad.
- Except for administrative activities, vehicles are not allowed within the boundaries of walk-in or backpacker campgrounds.

Wilderness Camping

Wilderness permit holders whose permit was issued by a cooperating agency and whose itinerary includes part of the Yosemite trail system, and who enter Yosemite from an adjacent wilderness or forest, are accepted as valid for wilderness travel within Yosemite.

All persons who wish to sleep overnight, camp, bivouac, or are in possession of equipment designed for overnight use in the wilderness/backcountry, must obtain and carry with them at all times a wilderness permit (one permit per group). The permit is valid only for the dates/trailheads indicated.

Washing and rinse water must be disposed of at least 100 feet from lakes and streams in the wilderness.

Camping is prohibited:

- Any area within four miles of a trailhead in:
 - Yosemite Valley
 - Hetch Hetchy
 - Wawona
 - Glacier Point
 - Tuolumne Meadows
- Within 100 feet of a trail unless terrain permits no other options.
- Within 25 feet of a trail.
- The top of Half Dome
- Below the high water line at both Lake Eleanor and Hetch Hetchy.
- In the watershed of the Dana Fork of the Tuolumne River.
- Between Happy Isles and Little Yosemite Valley campground.
- Any area within one mile of a public access road except at May Lake Backpackers' Campground, Inspiration Point, Poopenaut Valley, and the Lake Eleanor campground.

When Glacier Point Road is closed due to winter conditions, camping is prohibited in the following areas:

- With 1½ miles of Badger Pass Ski Area boundary.
- Summit Meadow, Dewey Point and the Glacier Point area. (See Glacier Point Area Map in the appendix.)
- Camping is restricted to designated campgrounds in the following areas: (See Designated Campground Map in the appendix.)
- Little Yosemite Valley campground
- Merced Lake High Sierra Camp
- Sunrise High Sierra Camp
- Vogelsang High Sierra Camp
- Glen Aulin High Sierra Camp
- May Lake High Sierra Camp

Camping is prohibited in the following areas: (See Prohibited Camping Area Maps in the appendix.)

- Happy Isles to Little Yosemite Valley campground.
- Between Little Yosemite Valley campground and Moraine Dome campground; including the area below 6,800 feet elevation from the east end of Moraine Dome to Grizzly Peak.
- Between Little Yosemite Valley campground and the Sunrise trail junction.
- In the Lost Lake basin, except camping is permitted at Snake Dike and the Diving Board.
- Camping in the Mariposa Grove is prohibited, except above the Clothespin Tree when the Mariposa Grove Road is closed, and snow depth is sufficient for skiing.

(b)(3) Camping within 25 feet of a water hydrant or main road, or within 100 feet of a flowing stream, river or body of water is authorized only in the following areas, under the conditions noted:

An established campsite exists and terrain permits no other options.

Camping is prohibited within 25 feet of a stream, river or body of water at all times.

(c) The following camping conditions are in effect for wilderness use. Violating these permit conditions is prohibited.

All persons who wish to sleep overnight, camp, or bivouac in the wilderness/backcountry must obtain and carry with them at all times a wilderness permit (one permit per group).

The permit is only valid for the trip leader, trailheads, dates, and number of people specified on the permit.

The first night's camping location must be on the same side of the road as the indicated trailhead.

(d) Conditions for the storage of food are in effect, as noted, for the following areas:

In Non-Wilderness Areas:

- In a properly closed bear-resistant food locker provided by NPS or the concessionaire.
- In a properly closed bear-resistant portable food container that is allowed for use in the park by the NPS.
- In a properly closed bear-resistant dumpster provided by NPS or the concessionaire.
- In the interior of a vehicle that is occupied and under the physical control of the operator or occupant; and occupants are not camping. (see 36 CFR 1.4 definition of camping)
- During daylight hours in the interior of a vehicle which has all windows, vents, and doors closed and the food is out of sight.
- When not stored as described above, all food and food containers must be within 6 feet of an awake person.
- From sunset to sunrise, food must not be stored in the interior of a vehicle except in any of the following circumstances:
- The vehicle is an occupied camping unit that is constructed of solid, non-pliable material and food is not visible and not odoriferous from the outside.
- The vehicle is an unoccupied camping unit that is constructed of solid, non-pliable material with windows, vents, and doors closed, and food is not visible and not odoriferous from the outside.

- The vehicle is unoccupied and is parked in an area outside of established lodging, camping, or residential areas and where bear-resistant food storage lockers are not available and the food is not visible or odoriferous from the outside.
- Inside a hard-sided building that does not restrict food storage and that is occupied or has windows and doors closed.
- Occupants of canvas-sided structures must store food in lockers; refrigerators fitted with latches that are properly latched, or other bear-resistant containers.
- If an NPS-provided food locker is full, the occupants of that site or unit may store a clean ice chest that is empty, or contains only plain water or ice, on top of or next to the full locker.

Wilderness

- In a bear-resistant food storage container that is allowed for use in the park by the NPS
- In a NPS-provided food storage locker.
- When requested, any person camping, intending to camp, or permitted to camp within the Yosemite Wilderness must provide proof that they are in possession of a bear-resistant food storage container allowed for use in Yosemite.
- When not stored as described above, all food and food containers must be within 6 feet of an awake person.

Exceptions to the above requirements are granted for:

- Backpackers only staying in a High Sierra Camp or Little Yosemite Valley are not required to carry an approved bear-resistant food storage container.
- Overnight big wall climbing: provided that food is hung on the wall at least 50 feet above the base of the cliff in 5th class or higher terrain, or on top of big walls climbers can hang food 50 feet over the edge in 5th class or higher terrain.
- Winter use (from December 15 of each year until March 30 of the following year) in designated areas within Yosemite Wilderness as noted below, unless otherwise designated by the Superintendent:
 - Overnight visitors traveling using skis or snowshoes in the following areas are not required to store food in bear-resistant food containers:
 - Above 7,200 feet in elevation.
 - Above 6,800 feet in elevation and within a ½ mile of a marked ski trail.
 - Overnight visitors are required to hang their food to protect it from wildlife or keep it within 6 feet of an awake person.

36 CFR §2.11 – PICNICKING

Certain areas have been closed to picnicking and are listed in section 1.5(a)(1) “Closures”.

Conditions for Picnicking:

- Picnickers must yield campground sites to persons who wish to camp.
- Food must be stored in accordance with CFR §2.10, above.

36 CFR §2.12 – AUDIO DISTURBANCES

The following developed areas are open to the use of power saws with a wood cutting permit during daylight hours:

- El Portal, Foresta, Hodgdon Meadow, and Wawona Wood Lots
- The Valley Wood Lot from November 1 to April 14 annually and is limited to between the hours of 10:00am-6:00pm.

36 CFR 2.13 – FIRES

(a)(1) The lighting or maintaining of fires is generally prohibited, except as provided for in the following designated areas and/or receptacles, and under the conditions noted:

Fires are prohibited on all beaches.

Fires are permitted in the following designated areas or receptacles:

- Campgrounds.
- Picnic areas with fire grates.
- Residential areas.
- In Little Yosemite Valley and the High Sierra Camp Campgrounds (except Volgelsang High Sierra Camp), fires are allowed only in NPS-provided communal fire rings.
- Wilderness campsites below 9,600 feet, in existing fire rings, except they are prohibited:
 - Within 100 feet from a trail or body of water even if a fire ring exists.
 - On the top of Half Dome.
 - The Upper and Lower Cathedral Lake basins.
 - Within ¼ mile of the shoreline of Kibbie Lake.
 - On top of El Capitan from the north rim hikers trail south to the rim of El Capitan.

Under the following conditions, at the Wauhoga Village Site:

A Ceremonial fire may be present in the Wauhoga at the sweat lodge fire ring and at the cooking area fire ring from 5 am to 10 pm year-round, unless otherwise prohibited by the Superintendent during periods of high fire danger. During periods of high fire danger and when requesting to maintain a fire between 10 pm and 5 am, the tribe may request a fire permit from the Superintendent for ceremonial purposes which will specify the terms, conditions, and hour restrictions under which this fire may be present. The two designated fire rings within the Wauhoga may only be used by the American Indian Council of Mariposa County Inc., also known as the Southern Sierra Miwuk Nation or tribal designee(s).

Pursuant to the 2018 agreement between the American Indian Council of Mariposa County Inc, also known as the Southern Sierra Miwuk Nation or tribal designee(s) and Yosemite National Park.

From October 1 to April 30, wood fires are allowed anytime.

From May 1 through September 30, all wood fires are restricted in Yosemite Valley campgrounds, Housekeeping camp, picnic areas, and the Hodgdon Meadow campground to between the hours of 5:00pm to 10:00pm.

- Administrative activities and the heating of buildings/residences are excepted from this restriction.
- These conditions do not apply to wood stove fires used for heating buildings, residences, and/or administrative activities.

At the discretion of the Superintendent, fires may be prohibited during some periods and at specified locations during extreme fire conditions or when poor air quality conditions exist.

Established Conditions for Fires:

- Fires may only be lighted in grates, grills, fire rings, cook stoves, or barbeque grills.
- The construction of new fire rings is prohibited.
- Burning of giant sequoia (*Sequoiadendron giganteum*) is prohibited.
- The burning of leaves, tree needles, conifer cones, and wet or green wood is prohibited except in residential areas for the purpose of clearing for a defensible space against wildfire in Wawona, Foresta, and Aspen Valley. Burning must be in compliance with local county residential burning regulations.
- Burning is not permitted during the fire season (fire season starts and ends as declared by the Fire Management Officer and posted on the Yosemite National Park website).
- Burning is allowed only on permissive days as established by Mariposa County and the Air Resources Board. Call the Mariposa County burn day information line to check burn day status prior to burning.
- The individual or home owner must notify park dispatch to include the start and end times and location of activity.
- Maximum pile size is 4 feet in diameter.
- Clear all flammable material and vegetation within 10 feet of the outer edge of burn pile.
- An adult must remain in attendance with a shovel until the fire is dead out.
- Keep 5 gallons water supply or a charged hose at the burning site.
- No burning shall be undertaken unless weather conditions (particularly wind) are such that burning can be considered safe. No burning shall be undertaken when wind speeds or gusts in excess of 5 MPH are present or forecast.
- Burn vegetation debris only.

(a)(2) The following restrictions are in effect for the use of stoves or lanterns:

Cook stoves and lanterns are permitted.

(b) Fires must be extinguished according to the following conditions:

All fires should be completely extinguished with no burning material remaining.

If a portable barbeque grill is used, all ashes/coals must be thoroughly extinguished and cooled and then removed from the park or placed in a trash receptacle.

36 CFR §2.14 – SANITATION and REFUSE

(b) Conditions for the disposal, containerization, or carryout of human body waste have been established as follows:

- In non-developed areas, solid human waste and service animal waste must be buried at least 6 inches deep in the soil and at least 100 feet from trails and campsites and bodies of water.
- While within one mile of the Hetch Hetchy reservoir's high-water mark, solid human waste and service animal waste must be buried at least 6 inches deep in the soil and at least 100 feet from trails and campsites, and at least 300 feet from bodies of water and water sources directly flowing into the reservoir.
- During winter use, snow should be removed and waste buried at least 6 inches deep in soil or waste should be carried out and disposed of in a vault toilet.
- Toilet paper and feminine hygiene products must be packed out.
- Solid waste excreted while on any climb in Yosemite National Park must be placed in a small container carried off the climb and disposed of in one of the vault toilets provided by the NPS.

36 CFR §2.15 – PETS

(a)(1) The following structures and/or areas are closed to the possession of pets:

- All trails
- Non-developed and designated Wilderness areas
- Specific areas as posted by signs
- O'Shaughnessy Dam
- Camp 4 and backpackers' campgrounds
- When snow depth is sufficient for skiing, pets are not permitted on unplowed roads.

(a)(1) The following structures and/or areas are open to the possession of pets:

- Any residential area and within any structure assigned to a permanent or term employee.
- When leashed, on fully paved roads, paved sidewalks, and bicycle pathways.
- When leashed, on Meadow Loop and Four Mile Roads in **Wawona**.

- When leashed, on Carlon Road and the Tuolumne Grove Road between **Hodgdon Meadow** and the **Tuolumne Grove parking lot**.
- When leashed, on Eleven Mile and Chowchilla Mountain Roads.

(a)(5) Pet excrement must be disposed of in accordance with the following conditions:

Pet excrement must be removed immediately and disposed of in waste receptacles.

(e) Pets may be kept by park residents under the following conditions:

- Pet ownership is restricted to two (2) pets per household. This includes cats, dogs, and other normal non-intrusive small household pets. Farm-type animals will not be permitted as pets. Wild animals, native to the park, shall not be permitted as pets.
- Pets within Yosemite National Park must be contained within the residence, under physical restraint, or on a leash at all times. Under no circumstance may a pet be left unattended on a leash or zip wire unless a responsible person is available to monitor the activities of the pet.
- All dogs must be registered and licensed in accordance with county ordinances and state laws. Dogs must have two (2) current inoculations for rabies and DHL (distemper, leptospirosis, and hepatitis). Dogs shall bear a collar at all times. Cats must be inoculated for rabies and distemper.
- The breeding of pets is prohibited except by permit from the Superintendent. If a female is bred accidentally, the offspring shall be removed before they are three months old.

36 CFR §2.16 – HORSES and PACK ANIMALS

(a) The following animals are designated as pack animals for purposes of transporting equipment:

- Horses, mules, burros, and llamas

(b) The use of pack animals is permitted on all park trails, routes, and areas except:

- Bicycle paths and roads.
- The Mist Trail from Happy Isles to Nevada Fall, paved foot trails, and the Mirror Lake Road in **Yosemite Valley**.
- Gaylor Lakes Trail from Tioga Pass Entrance Station to Gaylor Lakes.
- Chilnualna Falls foot trail from the parking area in **Wawona** to the junction with the stock trail that starts at the intersection of Loop Road and Larke Avenue.
- All interior trails within the Mariposa Grove (stock is authorized on the perimeter trail).
- Other areas and trails as signed.
- Llamas are not allowed on the High Sierra Loop, the Vernal/Nevada Falls corridor, or the river trail from Nevada Fall to Merced Lake. Exceptions may be

made for Pacific Crest and John Muir Trail users with written permission from the Superintendent.

(g) Other conditions concerning the use of horses or pack animals:

- Off trail/cross country travel is prohibited. The following are exceptions:
- Stock may travel up to ¼ mile off trail for purposes of watering, rest stops or camping.
- Miwok Lake Route.
- Avonelle Lake Route.
- Mattie Lake Route.
- Lyell Fork of the Merced Route.
- Horse Thief Canyon Route.
- Givens Lake Route.
- Establishing new trails and short cutting trails/switchbacks is prohibited.
- Stock parties must travel in single file whenever possible. On maintained stock routes, overnight wilderness users are limited to 15 people and 25 head of stock.
- On authorized cross country routes, overnight wilderness users are limited to 8 people and 12 head of stock
- Grazing is prohibited within four miles of trailheads and paved roads, immediately surrounding any High Sierra Camp, and in Mariposa Grove.
- Special conditions apply in Kerrick Canyon. See section 1.5
- Tying to trees or remaining in a campsite for periods longer than is needed to load and unload is prohibited.
- When picketed on a line, stock must be tied so they cannot chew on tree bark or eat the leaves of woody vegetation.
- Stock must be picketed at least 100 feet from any stream, lake or spring.

Non-wilderness camping with stock is permitted only within designated areas of Tuolumne Meadows, Hetch Hetchy, Bridalveil Campgrounds and Wawona. The following conditions apply to these areas:

- Grazing is prohibited.
- Feed must be provided by the camper.
- Sites must be cleaned of manure and uneaten food on a daily basis. Refuse must be raked, bagged and deposited into a dumpster.
- Watering facilities must be used when they are provided.
- Use of corrals is limited to the area directly under the provided highlines.

36 CFR §2.17 – AIRCRAFT and AIR DELIVERY

(a)(1) Areas designated for operating or using aircraft are provided for in section 7.16(c)

Hang gliding is allowed by permit at locations and areas designated in the permit.

(c)(1) The removal of a downed aircraft, components, or parts thereof is subject to procedures established by the Superintendent through written authorization

A permit is required for the removal of any downed aircraft, components, or parts thereof.

36 CFR §2.21 – SMOKING

(a) The following portions of the park, or all or portions of buildings, structures or facilities are closed to smoking as noted:

- All public buildings and public areas of concession buildings (including restrooms).
- Within 25 feet of any building, except those used as a single family residence.
- Other areas as posted.
- Smoking while traveling on trails is prohibited. Persons who wish to smoke must stop and remain in one location until they have extinguished their smoking material.

36 CFR §2.22 – PROPERTY

(a)(2) Property may be left unattended for periods longer than 24 hours in the following areas and under the following conditions:

- Visitors on permitted overnight trips into or through wilderness areas may leave their vehicles unattended for the period specified by their wilderness permit. There is no overnight parking allowed in the Village Store, General Office, Church Bowl or other parking lots as signed.
- Visitors with overnight accommodation in lodges or campgrounds may leave their vehicles unattended for the period of their stay as long as permits are displayed.
- Any motor vehicle that is immobile because it is not capable of moving under its own power due to mechanical malfunction, or any vehicle which is inoperable because it cannot be operated legally on public roads because it is unlicensed or unregistered, may be impounded by the Superintendent. The owner of the vehicle will be notified of pending impoundment. Leaving a notice on or in the vehicle, or at the owner's residence, or issuing a notice directly to the owner, fulfills the notification requirement. Ten days after notification, the vehicle may be impounded.
- Unattended property or vehicles that contain improperly stored food or food containers located in any public areas may be impounded at the owner's expense.
- Items left in food lockers more than 14 days or past the checkout time for the campsite may be impounded.
- Individuals leaving pets unattended or in violation of California Penal Code 597.7(a) are subject to immediate impoundment of their property/pet.

36 CFR §2.35 –ALCOHOLIC BEVERAGES and CONTROLLED SUBSTANCES

(a)(3)(i) The following public use areas, portions of public use areas, and/or public facilities within the park are closed to consumption of alcoholic beverages, and/or to the possession of a bottle, can or other receptacle containing an alcoholic beverage that is open, or has been opened, or whose seal has been broken or the contents of which have been partially removed:

- Visitor centers and auditoriums unless a temporary permit to sell and/or consume alcoholic beverages has been issued by the Superintendent.
- Amphitheaters and other sites designated for interpretive programs unless a temporary permit to sell and/or consume alcoholic beverages has been issued by the Superintendent.
- Trams, park tour buses, and shuttle buses.
- Any ski lift at Badger Pass Ski Area.
- Stoneman Bridge, Clark's Bridge, and Housekeeping Camp Bridge.

Other than during posted times of operation, the following areas are closed to the possession of open containers and consumption:

- Degnan's Complex.
- Village Grill.
- Half Dome Village Pizza Deck, seating areas adjacent to the retail stores and courtyard benches.
- Tuolumne Meadows Grill and Store.
- Badger Pass Ski Area Lodge
- Wawona Hotel Golf Shop
- Yosemite Valley Lodge plaza and patio.
- The Ahwahnee Hotel patio and courtyard.

36 CFR §2.50 – SPECIAL EVENTS

Permits are required for any special event utilizing park areas.

Special events such as walk-a-thons, races, endurance runs, or competitive events, whether commercial or otherwise, will not be permitted in wilderness areas.

Solicitation activities (per 36 CFR § 2.37) require a permit.

36 CFR §2.51 – DEMONSTRATIONS

(b) Demonstrations of more than 25 people are allowed within park areas designated as available under paragraph (c)(2) when the Superintendent has issued a permit for the activity.

(c)(2) The following locations are designated as available for demonstrations:

- **Yosemite Valley** near park headquarters and the visitor center. (See Yosemite Valley Park Headquarters Map in the appendix.)
- **Wawona** next to the store. (See Wawona Store Area Map in the appendix.)

- **O'Shaughnessy Dam** by the day use parking area. (See O'Shaughnessy Dam Parking Area Map in appendix.)

The following locations in **Yosemite Valley** between the hours of 8:00am and 5:00pm, when not being utilized for previously scheduled public or administrative purposes:

- Yosemite Chapel.
- Lower Pines Amphitheater.
- Lower River Amphitheater.
- Valley Theater.

36 CFR §2.52 – SALE OR DISTRIBUTION OF PRINTED MATTER

(b) The sale or distribution of printed matter by more than 25 persons is allowed within park areas designated as available under § 2.51(c)(2) (see above) when the Superintendent has issued a permit.

36 CFR §2.62 – MEMORIALIZATION

(b) A permit is required for the scattering of ashes from cremated human remains, pursuant to the terms and conditions of a permit as outlined below:

- The remains to be scattered must have been processed by pulverization after cremation.
- The scattering of human ashes by persons on the ground is to be performed out of sight of park visitors and at least 100 yards from any trail, road, walkway, parking area, developed facility, watercourse, or body of water.
- The scattering of human remains from the air is prohibited.
- Ashes must be scattered over an area large enough so that they will not accumulate in one place.
- No marker of any kind may be left to commemorate the event.
- No publicity is to be given to this activity.
- The use of commercial, for profit venture to distribute cremated remains in the park is prohibited.

Except for the authorization to scatter cremated human remains, nothing in this permit shall be construed as authorizing an entry or activity otherwise prohibited or restricted by law or regulation.

Part 3: BOATING AND WATER USE ACTIVITIES

36 CFR §3.8 (a)(2) – LAUNCHING OR RECOVERY OF A VESSEL

Launching or recovery of a vessel is prohibited except at the following sites:

The Merced River

- The shoreline of the Merced River from the headwaters to the Little Yosemite Valley Campground.
- Non-vegetated areas downstream from Clark's Bridge for approximately 100 feet or as signed.
- Non-vegetated areas downstream from Stoneman Bridge for approximately 100 feet or as signed.
- Non-vegetated areas of El Capitan Bridge for approximately 100 feet upstream and downstream or as signed.
- Non-vegetated areas of shoreline downstream from Pohono Bridge.
- Non-vegetated areas of shoreline at Sentinel Beach for approximately 100 feet or as signed.

The South Fork of the Merced River

- Non-vegetated areas of shoreline from the headwaters to 100 yards upriver from the Wawona impoundment.
- Non-vegetated areas of shoreline downriver from the Wawona impoundment.

The Tuolumne River

- Pothole Dome area: downstream of the meadow.
- Glen Aulin: within 100 feet of the bridge.
- Pate Valley: the shore within 100 feet of the bridge.
- Scouting rapids and bypassing obstacles is allowed for safety purposes.
- The non-vegetated shore of the eastern edge of Tenaya Lake.
- Non-motorized boats may be launched at wilderness lakes, except where otherwise prohibited

PART 4: VEHICLES AND TRAFFIC SAFETY

36 CFR §4.11 – VEHICLE LOAD, WEIGHT AND SIZE LIMITS

(a) The following load, weight and size limits, which are more restrictive than State law, apply to the roads indicated under the terms and conditions, and/or under permit as noted:

The following kingpin-to-rear-axle (KPRA) distances are established for park roads:

- The Wawona Road has a KPRA of 40 feet.
- The Big Oak Flat Road has a KPRA of less than 30 feet.
- The Tioga Pass Road has KPRA of 40 feet.
- The El Portal Road has a KPRA of 32 feet.

During periods when the road base of specific park roads is saturated, a weight restriction for vehicles of 14,000 pounds will be signed and enforced.

California legal trucks must be no larger than 14 feet high, 102 inches wide, and 40 feet long if a single vehicle, and 65 feet long if a combination vehicle. An overall length exception to 75 feet is given for a truck, tractor, semi-trailer, trailer combinations (doubles) if each trailer is no more than 28 feet 6 inches long.

California legal truck with single trailer:

- Semi-trailer = no limit
- KPRA = 40 feet maximum (if two axles in rear)
- KPRA = 38 feet maximum (if one axle in rear)
- Combination length = 65 feet maximum

California legal truck with double trailer:

- Semi-trailer = 28 feet 6 inches maximum
- Trailer = 28 feet 6 inches maximum
- KPRA = no limit
- Combination length = 75 feet maximum

-or-

- Either trailer or semi-trailer = 28 feet 6 inches maximum; the other trailer has no limit

KPRA = no limit

- Combination length = 65 feet maximum

36 CFR §4.21 – SPEED LIMITS

(b) The following speed limits are established for the routes/roads indicated:

- The maximum speed on park roads is 35 mph unless posted otherwise.
- When and where chain controls are in effect, the maximum speed is 25 miles per hour.
- The speed limit approaching and leaving all entrance station areas is 20 miles per hour.
- When the **Yosemite Valley** special use lane is in effect, the maximum speed is 25 miles per hour on Southside Drive from El Capitan Crossover to Sentinel Crossover when posted.

36 CFR §4.30 – BICYCLES

a) *Park Roads*. Bicycle use is permitted on park roads, parking areas, and where general vehicle use is allowed by the public

b) *Administrative Roads*. Administrative roads are roads closed to motor vehicle use by the public, but open to motor vehicle use for administrative purposes. Bicycle use is permitted on the following administrative roads:

- Wawona
 - Eleven Mile Road near Yosemite West

- Four Mile Fire Road south of Wawona Meadow
- Mariposa Grove Road from Welcome Center to the Lower Grove, to include the ADA road from Lower Grove to the Grizzly Giant ADA parking lot.

d) *Existing Trails.* The following trails have been designated for bicycle use:

- Yosemite Valley
 - Paved bike path loop from Swinging Bridge through the East Valley - Happy Isle/ Mirror Lake. (Unless indicated by a “No Bikes Allowed” sign)
- Wawona
 - Wawona Meadow Loop

f) *Closures and other restrictions:*

- Bicycles are prohibited in designated wilderness areas and area where indicated by closure notices and signs.
- Bicycles are prohibited in the following areas:
 - The surface of O’Shaughnessy Dam.
 - All dirt roads starting from the gate at the top of O’Shaughnessy Dam leading to areas below the dam.
 - The Hetch Hetchy Road when the road is closed.
 - Cyclists on rental bicycles and rental e-bicycles are prohibited on the bicycle path between the bicycle racks at the base of the Mirror Lake Road and Mirror Lake.
 - Yosemite Falls paved trails where signed as closed to bicyclists
 - Any location where signs prohibit their use.
- Bicycles may be permitted on certain closed roads (such as the Tioga Road and Glacier Point road) during times in which no snow removal activities are underway, when the road is cleared of snow but not yet opened to vehicle traffic, and subject to any limits or restrictions set by the Superintendent.
- The bicycle and e-bike speed limit on all administrative roads and existing trails is established as 15 mph in order to provide a safe environment for all users of these areas.

i) *Electric Bikes “E-Bikes”*

- E-bikes are permitted where traditional bicycles are allowed.
- E-bikes are prohibited where traditional bicycles are prohibited.

36 CFR §4.31 – HITCHHIKING

Hitchhiking is permitted in the following areas under the conditions noted:

- All areas of the park when the person is off the roadway surface and when public safety and traffic flow are not adversely affected.

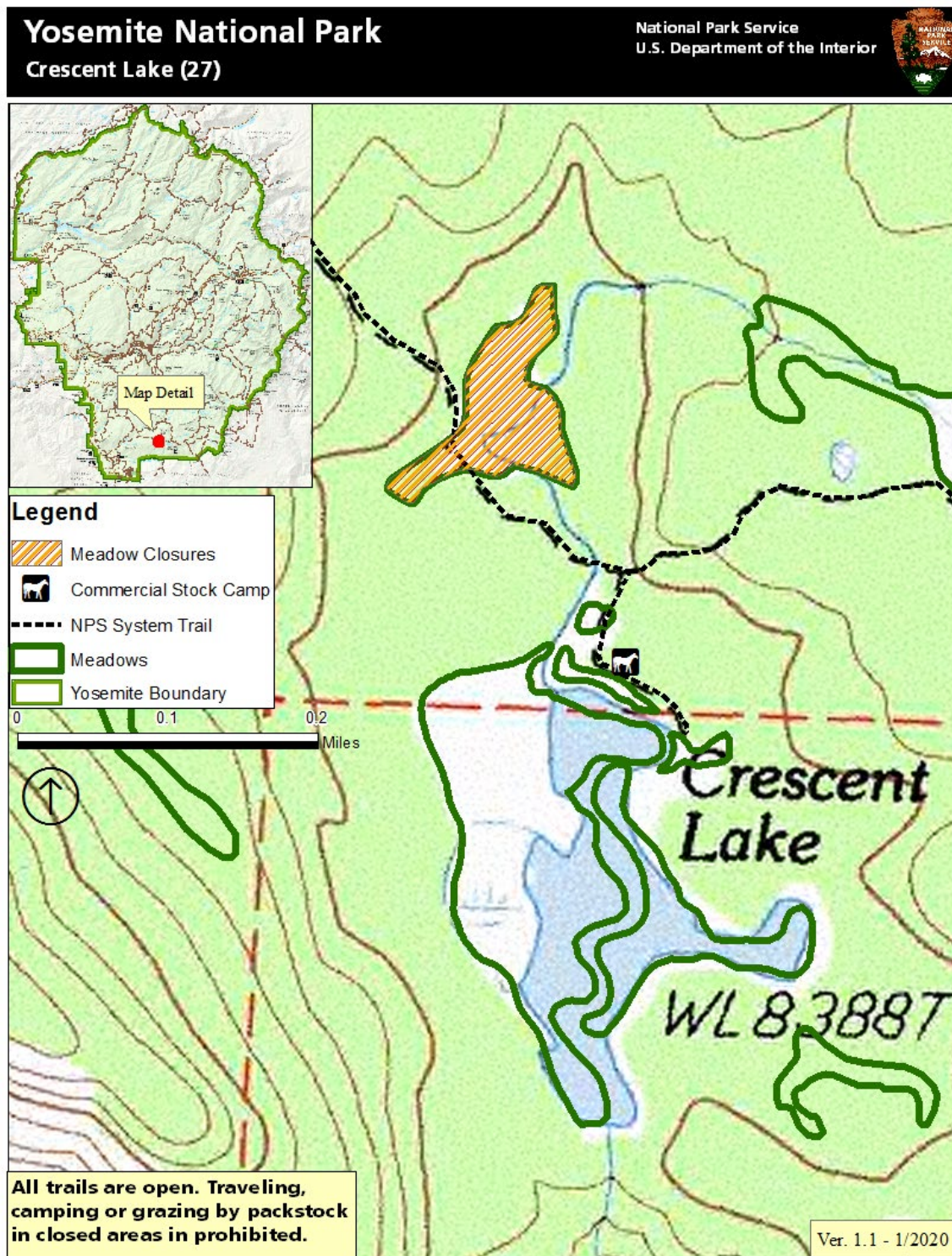
- When vehicles may safely pull off the main traffic lane into a turnout or safely onto the shoulder to allow for passengers to be received.
- When not under the influence of alcohol or intoxicating drugs.
- When hitchhiking behavior is safe and not a nuisance.
- Except in residential areas where signs exist establishing the area as a residential area only.

PART 7: SPECIAL REGULATIONS, AREAS OF THE NATIONAL PARK SYSTEM

36 CFR §7.16 – YOSEMITE NATIONAL PARK

(c) Powerless flight requires a permit from the Superintendent.

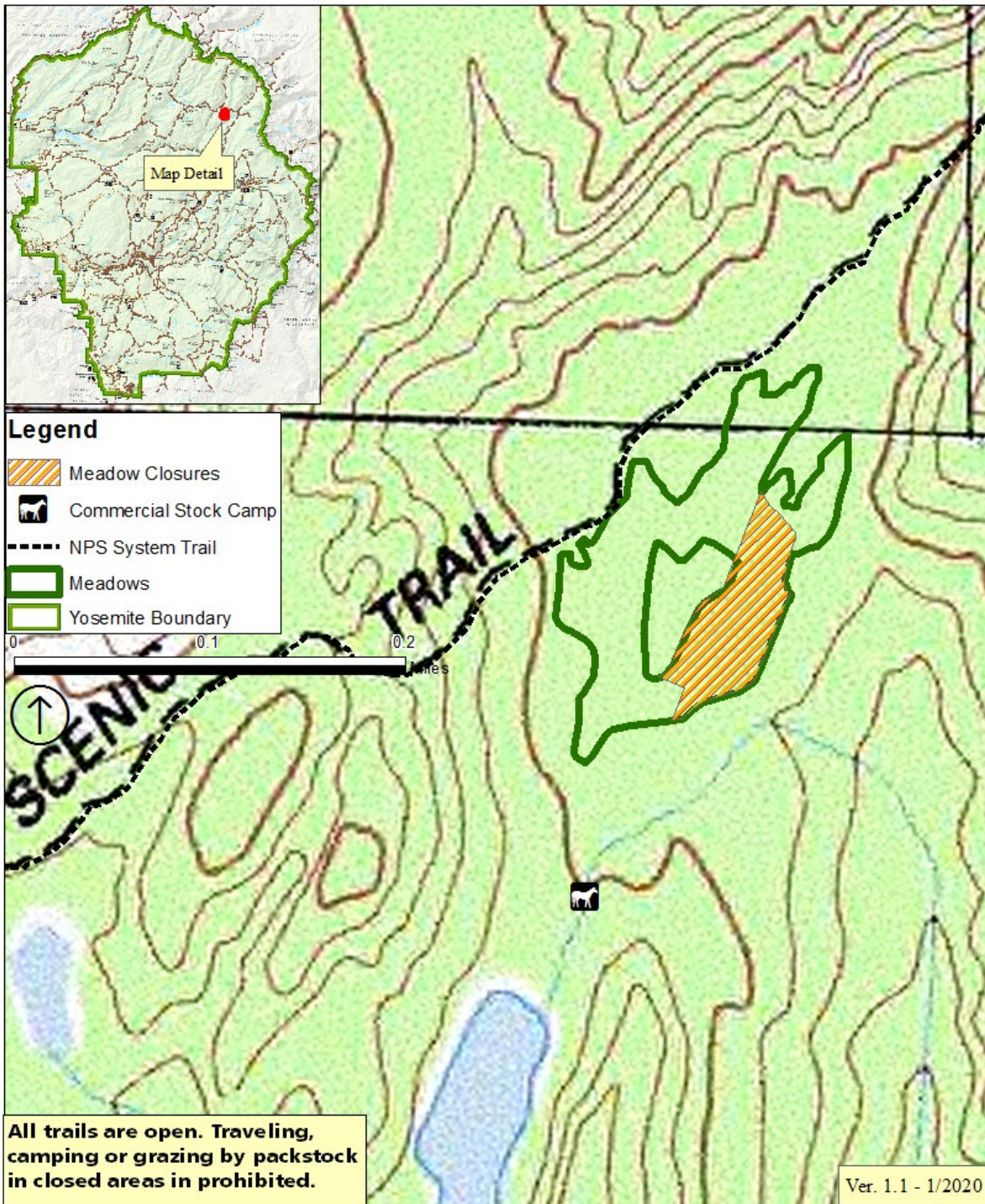
Appendix. Maps of 2021 grazing area closures for resource protection and pack stock use in Yosemite Wilderness. See provided table for meadow opening dates and grazing capacities. Also see 2021 Yosemite Superintendent's Compendium for additional information and guidance.



Yosemite National Park

Hook Lake - North (97)

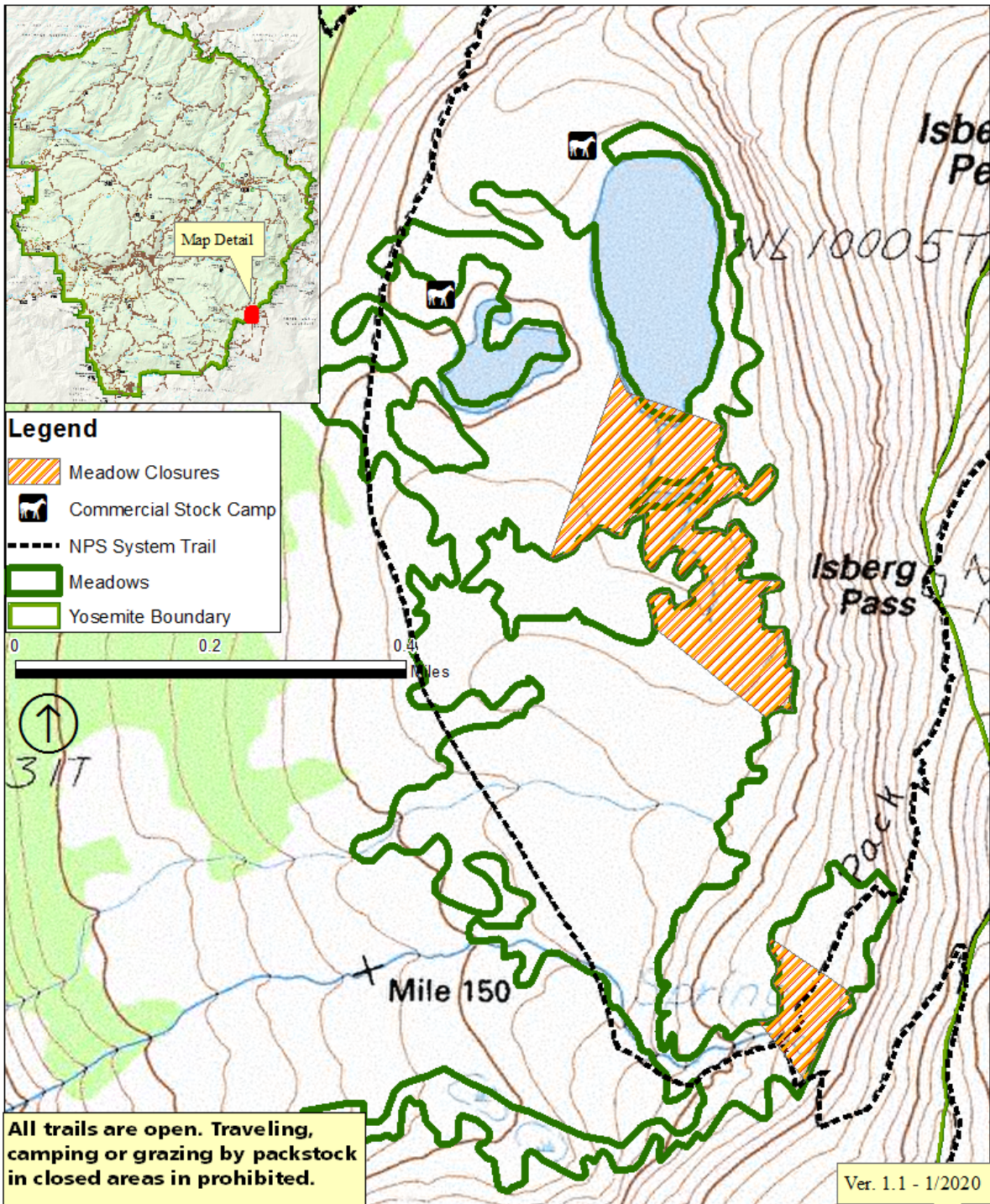
National Park Service
U.S. Department of the Interior



Yosemite National Park

Isberg Pass Lake-West (13) & East (142)

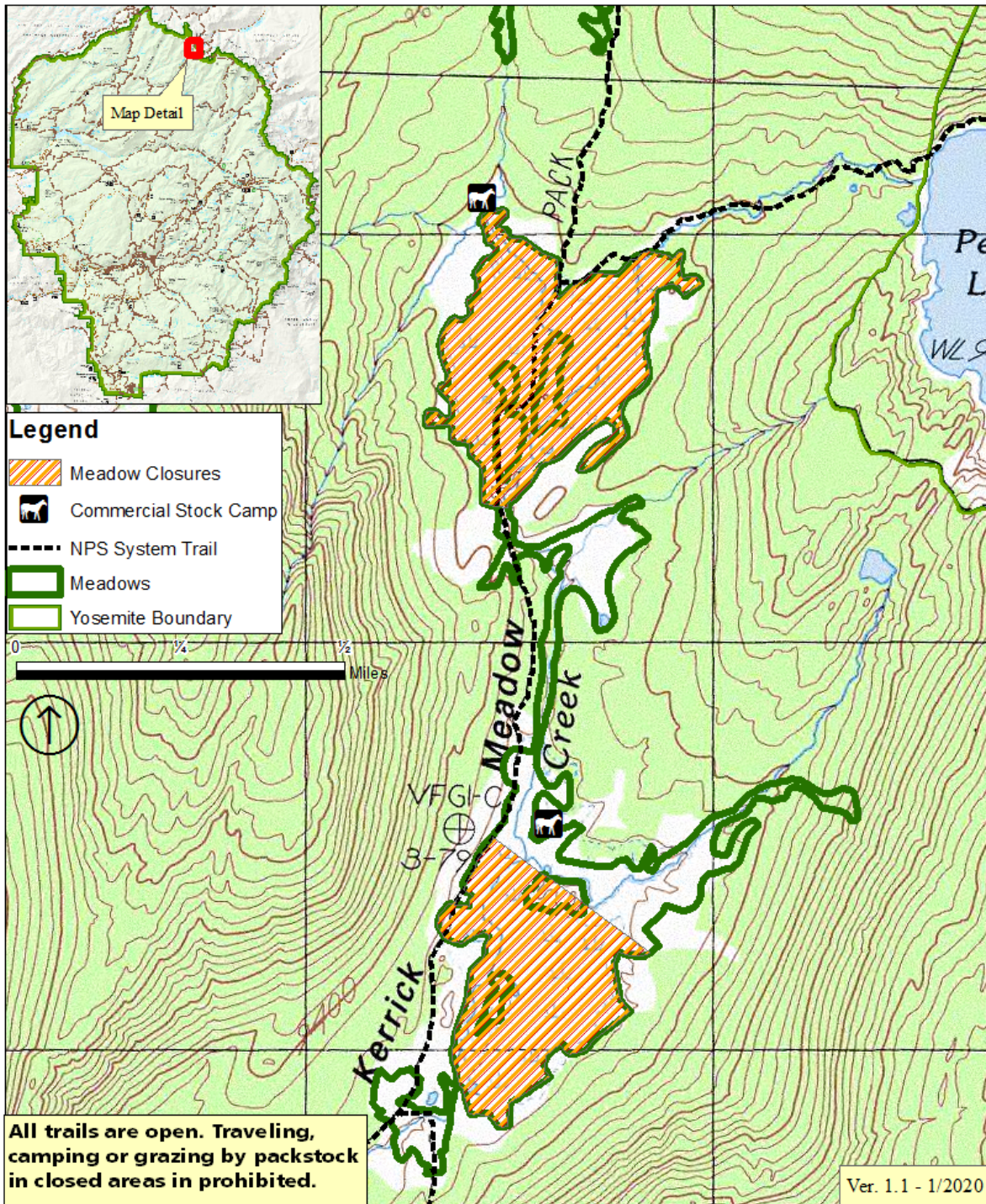
National Park Service
U.S. Department of the Interior



Yosemite National Park

Kerrick, Upper Meadow North (90) & South (138)

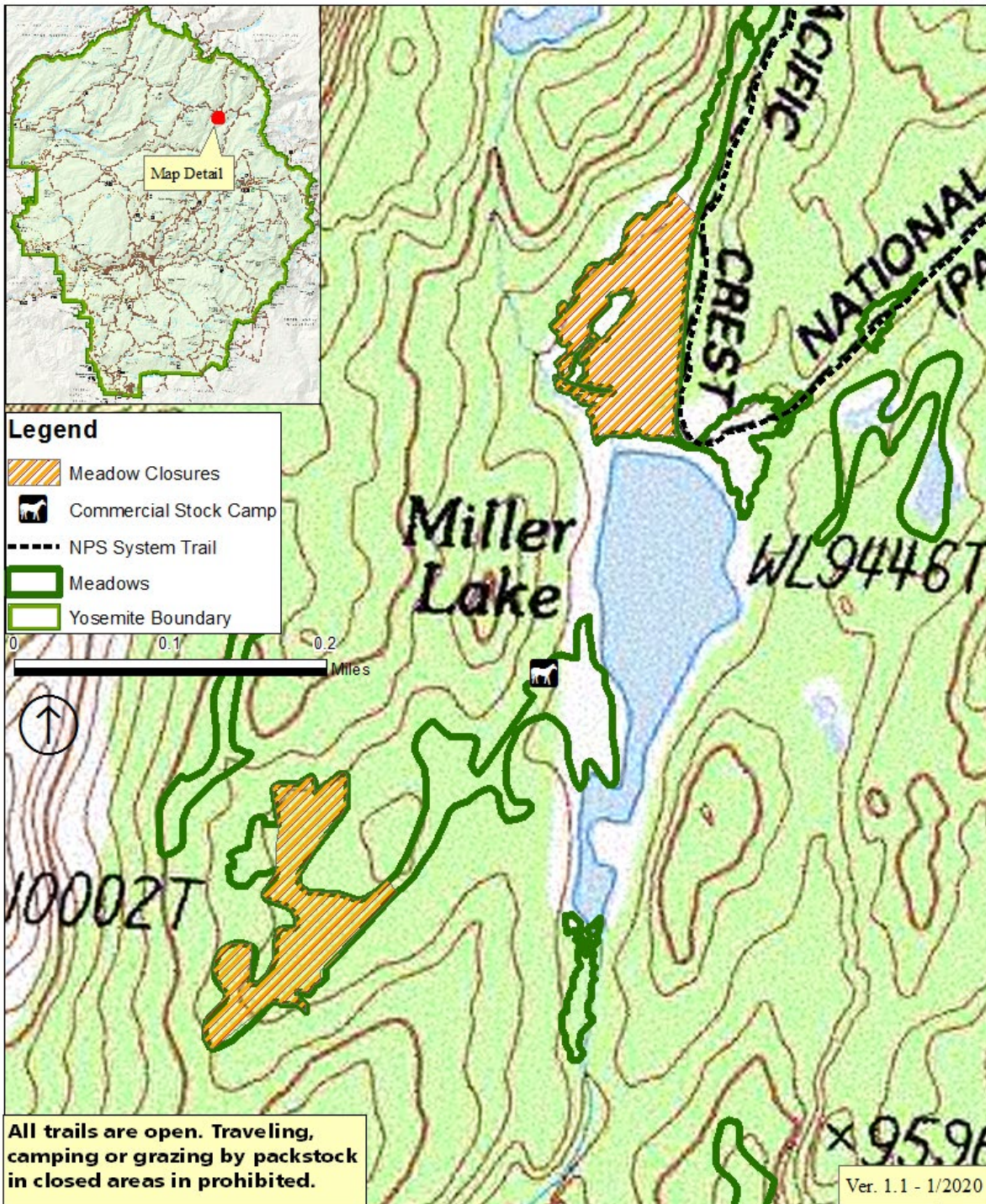
National Park Service
U.S. Department of the Interior



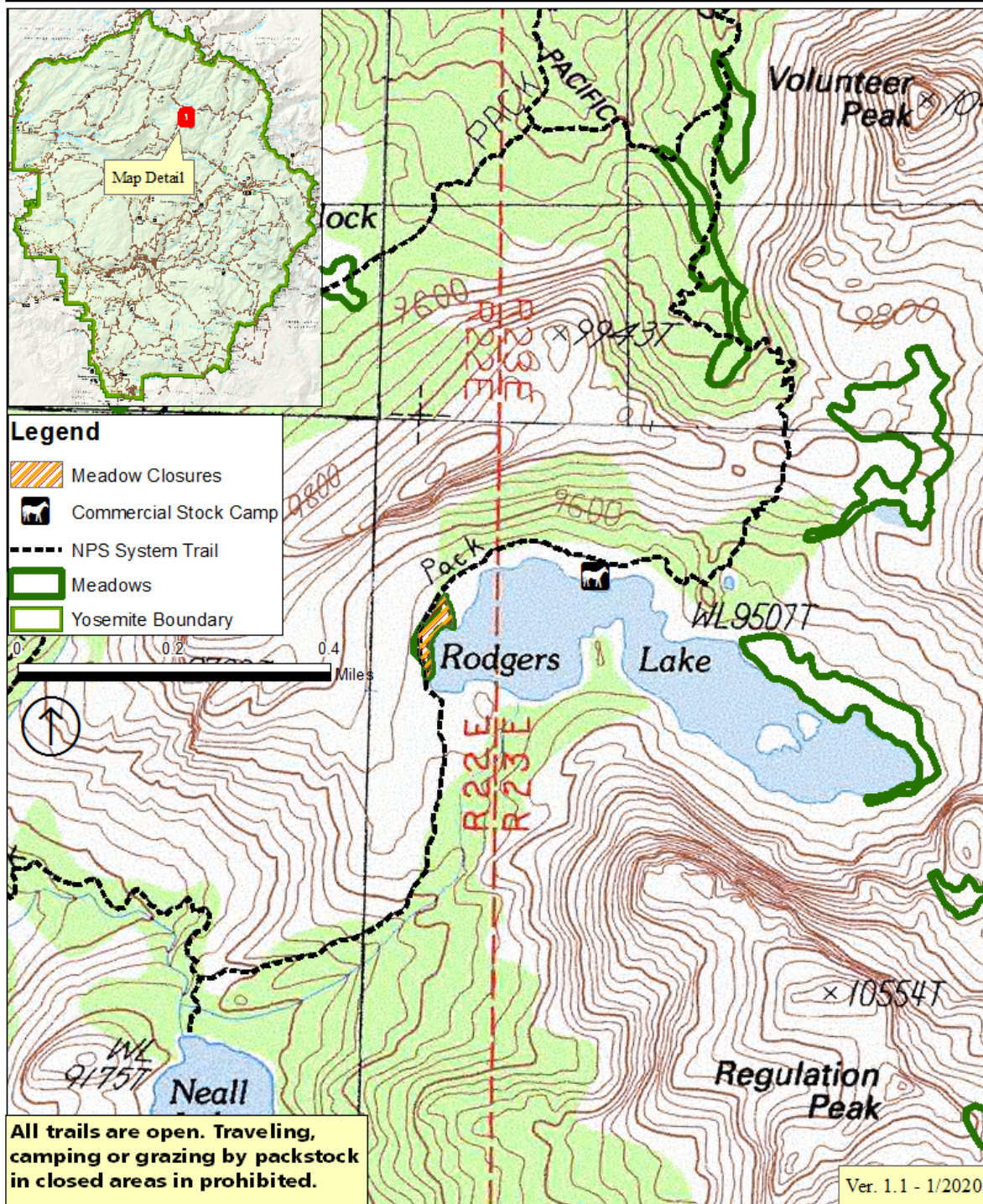
Yosemite National Park

Miller Lake North (96)

National Park Service
U.S. Department of the Interior



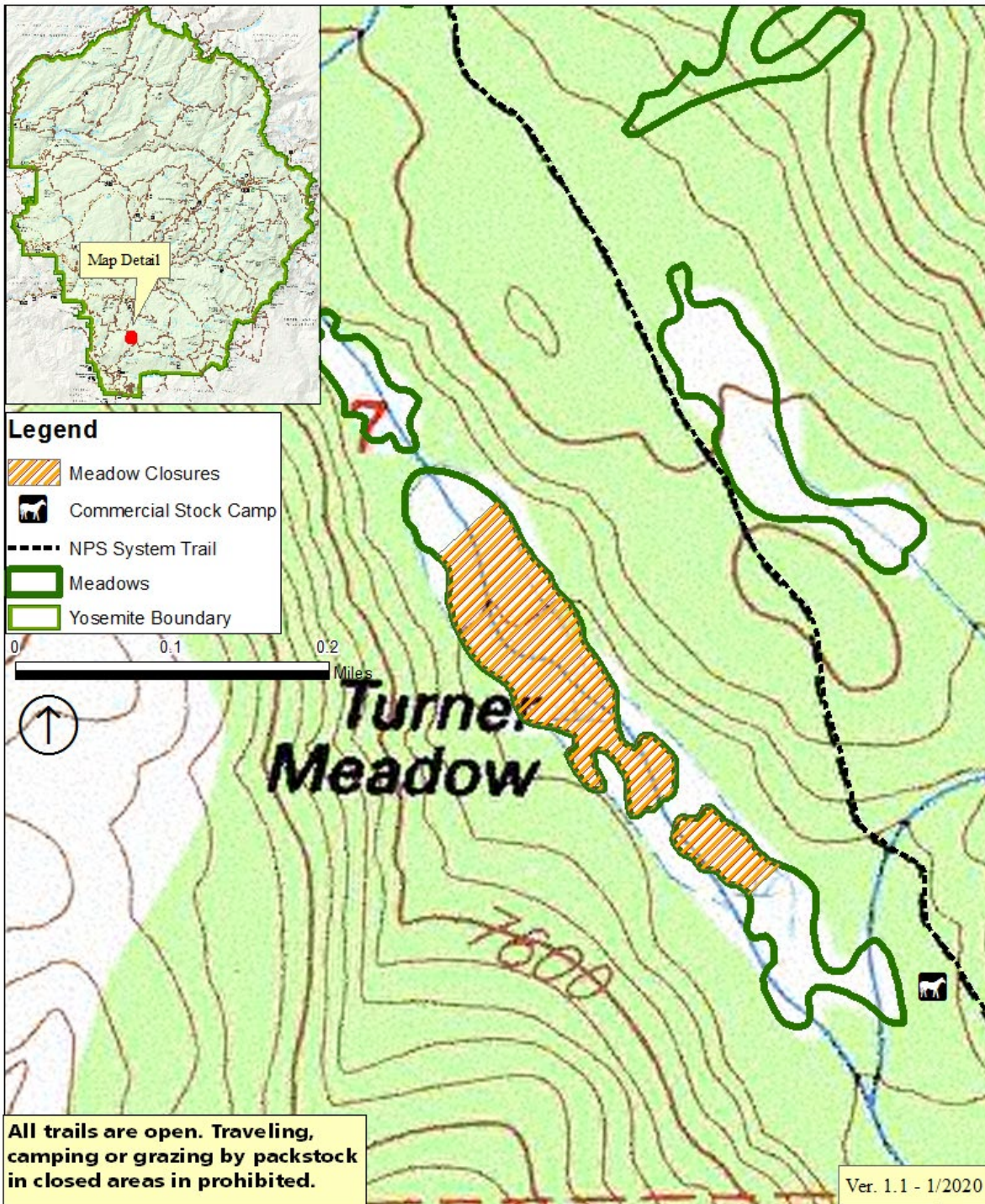
Rodger's Lake (93)



Yosemite National Park

Turner Meadow (118)

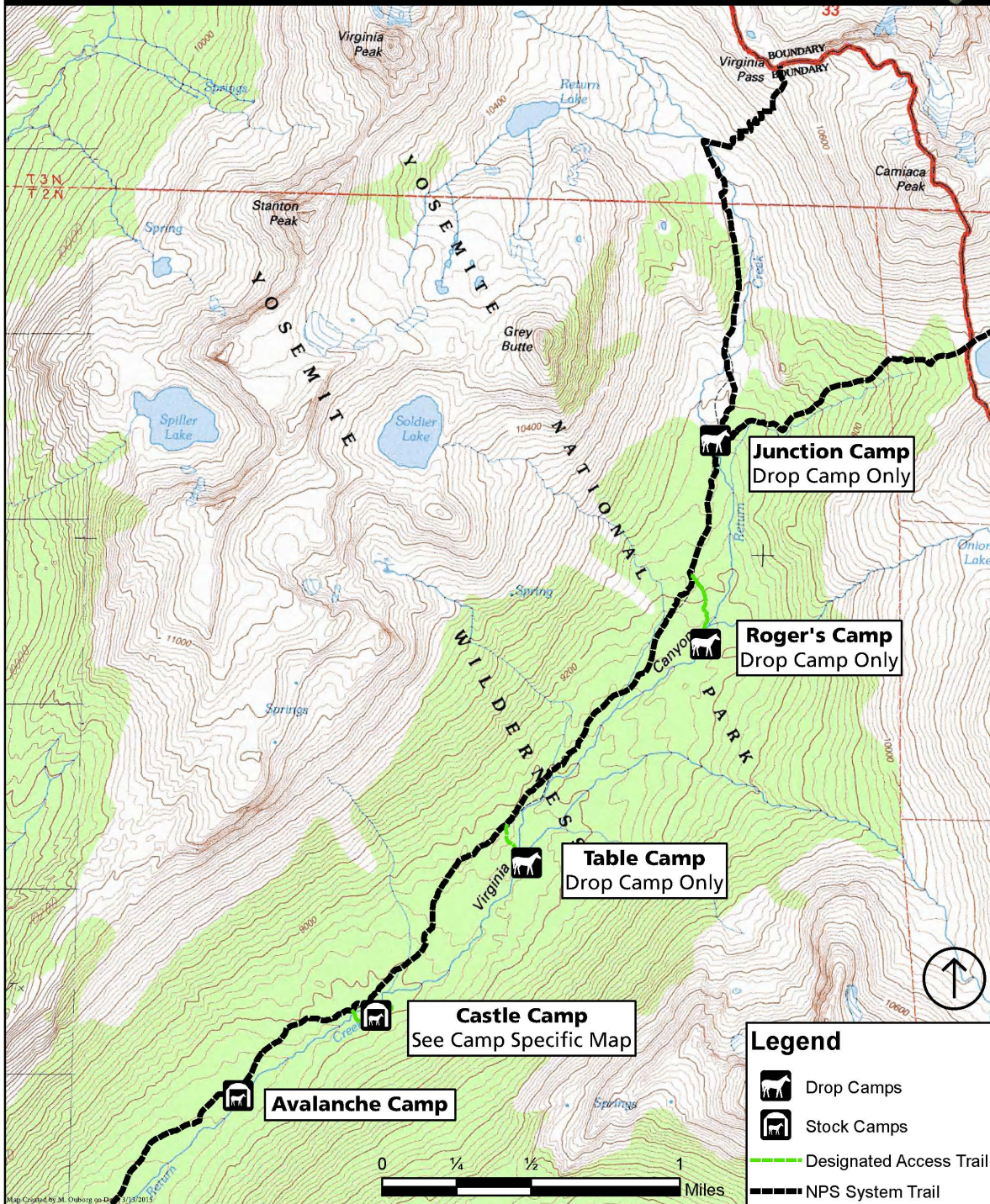
National Park Service
U.S. Department of the Interior



Yosemite National Park

Virginia Canyon CUA Overview Map

National Park Service
U.S. Department of the Interior



Yosemite National Park

Castle Camp (Virginia Canyon) CUA Overview Map

National Park Service
U.S. Department of the Interior



Legend

- Existing Fire Ring
- Designated Access Trail
- Closed Access Trail
- Closed Holding Area
- Designated Holding Area
- Designated Unloading Area
- Archeological Site
- NPS System Trail

0 50 100 200
Feet

