



Why are public comments important?

Welcoming Your Ideas

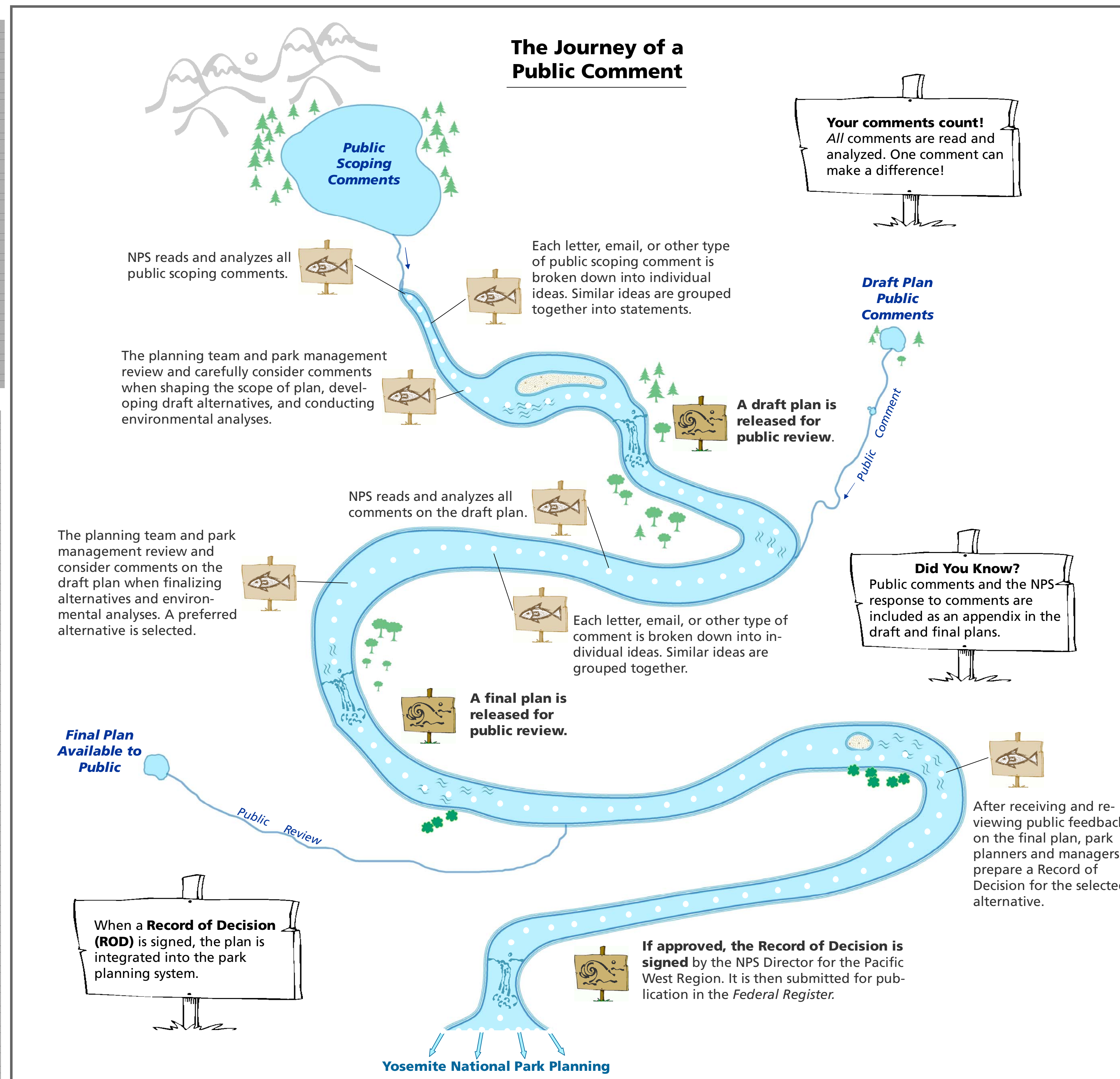
Public agencies are required by law to seek public comment on proposed plans or projects. However, in Yosemite, our goal is to go above and beyond statutory requirements and engage the public in the decision-making process. We're always looking for ways to improve our communication process. If you have any ideas, feel free to contact us (see box at right).

Public Comments and Park Planning



Photo Courtesy of EPA

The planning team and resource managers often have very specialized knowledge about an area, but it is impossible for them to know all of the issues that are important to Yosemite's visitors. Public comments are one way to provide additional information that will help planners and managers make appropriate, timely, and well-informed decisions.



"Never doubt that a small group of thoughtful, committed citizens can change the world. Indeed, it's the only thing that ever has."
-Margaret Mead

How to Submit a Comment

You can submit comments in a number of ways:

- In person at Open Houses and public meetings
- By email : Yose_Planning@nps.gov
- Online: parkplanning.nps.gov/yose
- By fax: (209) 379-1294
- By mail: Superintendent
Yosemite National Park
PO Box 577
Yosemite, CA 95389

For more information, please see:
www.nps.gov/yose/planning