

Conceptual Site Drawings

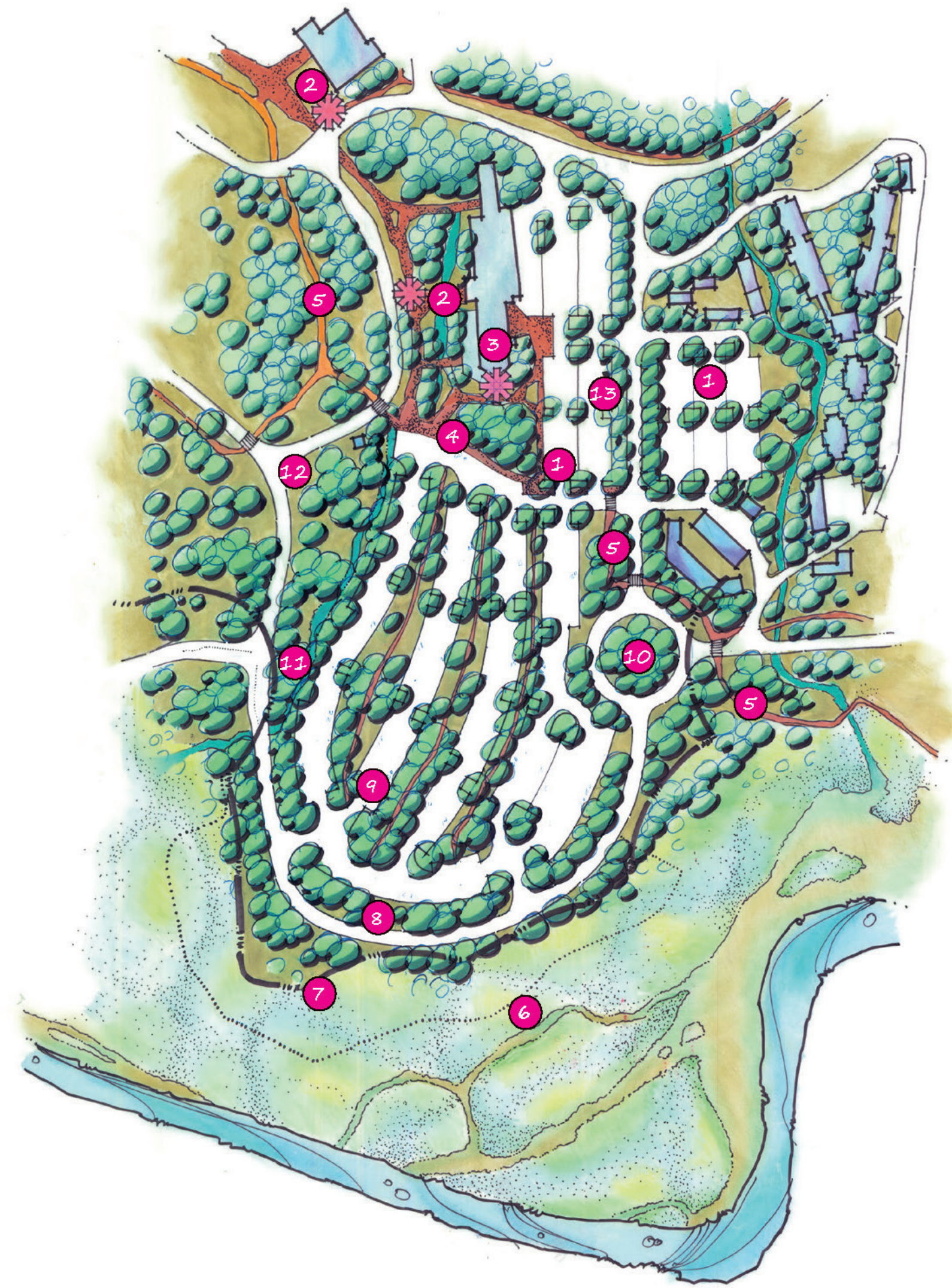
YOSEMITE'S MERCED RIVER DRAFT PLAN / EIS

National Park Service
U.S. Department of the Interior



ALTERNATIVE 5 (PREFERRED): ENHANCED VISITOR EXPERIENCE AND ESSENTIAL RIVERBANK RESTORATION

YOSEMITE VILLAGE DAY-USE PARKING AREA (CAMP 6)



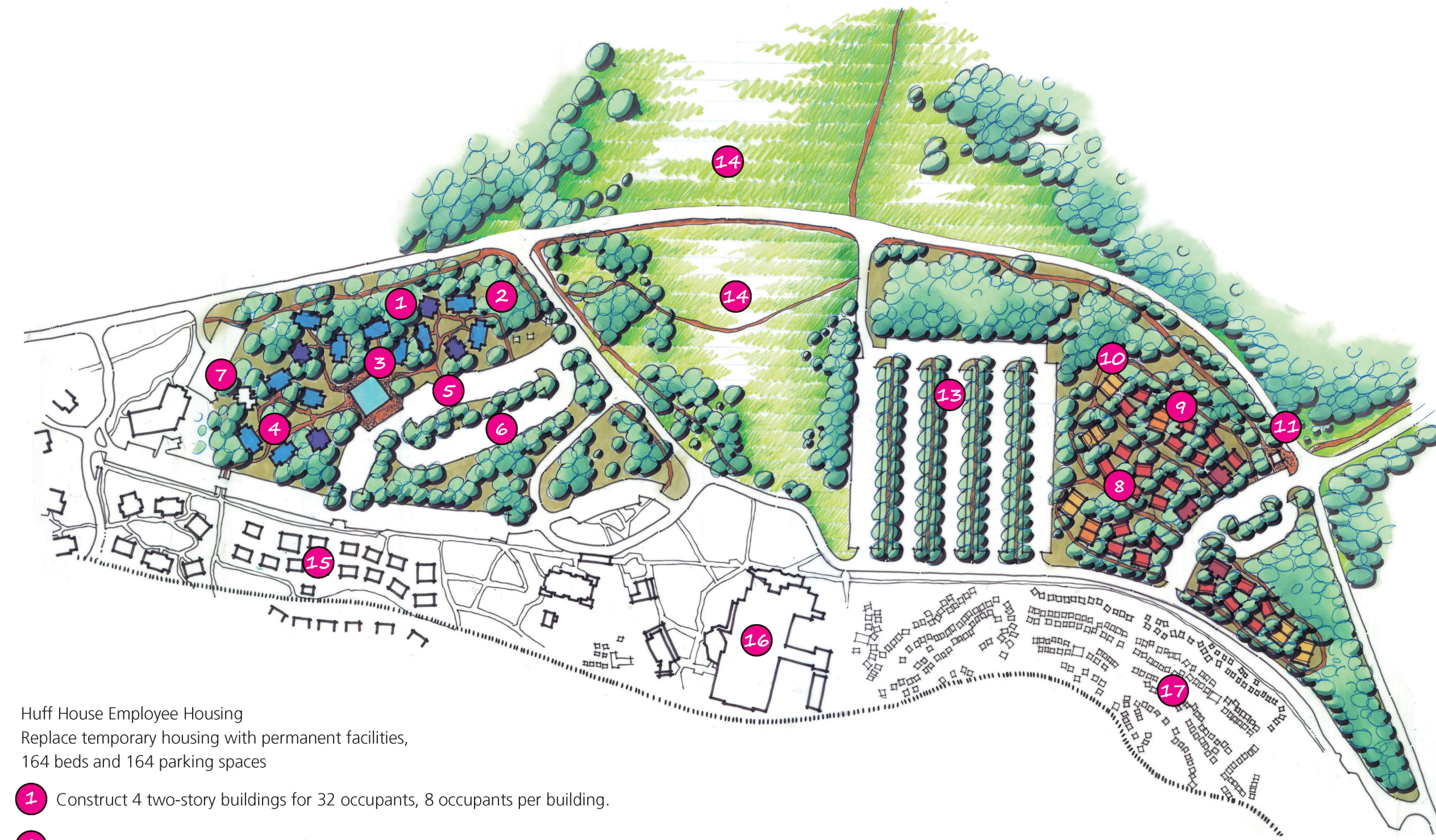
- 1 Eliminate Concessioner General Office and Garage, located between the Village Store and Ahwahnee Meadow, providing more space for visitor parking.
- 2 Retain shuttle stops on Visitor Center Loop Drive.
- 3 Replace Village Sport Shop with visitor contact station.
- 4 Eliminate existing art activity center and improve pedestrian access.
- 5 Improve pedestrian connections and bike paths east and west of the day-use parking area.
- 6 Linework represents existing day-use parking area limits.
- 7 Reduce encroachment of day-use parking area to provide 150-foot riparian buffer. Restore wetlands and meadows.
- 8 Re-route Northside Drive to conform to the 150-foot riparian buffer. Consolidate all parking north of the roadway, minimizing pedestrian and vehicular conflicts.
- 9 Provide 850 day-use parking spaces. Provide landscaped areas to retain large numbers of trees and screen parking bays and bioswales that will treat storm water run-off. Provide pedestrian pathways.
- 10 Construct a roundabout to alleviate traffic congestion at the intersection of Northside Drive and Village Drive.
- 11 Re-align Sentinel Drive into a "T" intersection with a re-routed Northside Drive. Provide left-hand turn lanes off Sentinel Drive and Northside Drive. Create a sense of arrival through wayfinding and landscape treatments.
- 12 Reconstruct Northside Drive and Visitor Center Loop Drive as a "T" intersection.
- 13 Enhance Village Drive by establishing a tree-lined roadway as a connection to day-use parking facilities and lodging.



Alternative 5
Conceptual Site Drawing for
Yosemite Village Day-use Parking Area
Yosemite National Park
United States Department of the Interior • National Park Service

* These drawings are provided to demonstrate where facilities would be removed, relocated, or constructed according to actions more fully described by project alternatives. The drawings do not represent a final proposal. More detailed design and construction documents would be developed consistent with the general concepts presented here.

CURRY VILLAGE



- Huff House Employee Housing
Replace temporary housing with permanent facilities.
164 beds and 164 parking spaces
- 1 Construct 4 two-story buildings for 32 occupants, 8 occupants per building.
 - 2 Construct 11 two-story buildings for 132 occupants, 12 occupants per building.
 - 3 Provide common recreational area, approximately 3,600 square feet.
 - 4 Build plaza areas and walkways with site furnishings, accent paving, and enhanced landscaping.
 - 5 Construct a shuttle bus stop.
 - 6 Remove ice rink and bicycle rentals. Construct an employee parking facility with 164 spaces.
 - 7 Retain historic residence for housing purposes.

- Boys Town Guest Lodging
Replace tent cabins with 98 permanent guest cabins and 78 parking spaces
- 8 Construct 25 duplex buildings replicating historic cabins, or 50 units subtotal.
 - 9 Construct 2 four-plex buildings, or 8 units subtotal
 - 10 Construct 5 eight-plex buildings, or 40 units subtotal
 - 11 Relocate Campground Reservation Center, provide 8 parking spaces.
 - 12 Construct a roadway connecting Curry Village and East Valley Campgrounds with 78 parking spaces guests and 8 short-term parking spaces for Campground Reservation Center. 20 parking spaces will be reserved for guest use in Curry Orchard Parking Area.

Curry Orchard Parking Area

- 13 Improve parking area with 430 spaces and landscape buffers with trees and bioswales that will treat storm water run-off.

Meadow Restoration Area

- 14 Improve hydrology, remove invasive species, promote weed control and plant native species.

Existing Curry Village Visitor Services

- 15 Retain existing historic cabins and Stoneman Cottage (65 lodging units).
- 16 Retain existing Curry Pavilion.
- 17 Retain 290 tents.



Alternatives 5 and 6
Conceptual Site Drawing for
Curry Village
Yosemite National Park
United States Department of the Interior • National Park Service

* These drawings are provided to demonstrate where facilities would be removed, relocated, or constructed according to actions more fully described by project alternatives. The drawings do not represent a final proposal. More detailed design and construction documents would be developed consistent with the general concepts presented here.

YOSEMITE LODGE



- 1 Re-align Yosemite Lodge intersection within the limits of existing developed areas.
- 2 Maintain all existing Yosemite Lodge buildings and parking areas.
- 3 Enhance pedestrian circulation system.
- 4 Construct tour bus loading and unloading area, with shelter.
- 5 Construct employee housing in 2 two-story buildings with 52 occupants per building and 39 employee parking spaces per building.
- 6 Relocate linen storage and laundry buildings from the 100-year floodplain to an addition to the food service building. Reconfigure truck loading and unloading area. Demolish and remove existing NPS volunteer office.
- 7 Re-construct a section of the Yosemite Lodge entrance road as a promenade with 5% slope to underpass. Install accent paving, landscaping, wayfinding and site furnishings, low-voltage site lighting consistent with design features of the Yosemite Falls trail.
- 8 Construct 300 visitor parking spaces at Yosemite Lodge Day-use Parking Area. Maintain existing vegetation as buffers to separate and screen parking bays, provide pedestrian pathways and bioswales that will treat storm water run-off.
- 9 Construct 15 tour bus parking spaces.
- 10 Construct a shuttle bus stop with shelter and comfort station.
- 11 Construct 41 additional parking spaces at Camp 4.
- 12 Retain 35 existing walk-in campsites at Camp 4. Construct 35 additional walk-in sites opposite existing parking facility. Occupancy is limited to 6 campers per site. Standard walk-in campsite is 3,850 square feet (70-foot diameter), including 1,200 square feet of clearance with a 15-foot perimeter buffer.
- 13 Protect and enhance a 150-foot riparian buffer.



Alternative 5
Conceptual Site Drawing for
Yosemite Lodge and Camp 4
Yosemite National Park
United States Department of the Interior • National Park Service

* These drawings are provided to demonstrate where facilities would be removed, relocated, or constructed according to actions more fully described by project alternatives. The drawings do not represent a final proposal. More detailed design and construction documents would be developed consistent with the general concepts presented here.



1. Pedestrian underpass: Move pedestrian crossing to Yosemite Falls west of the existing infrastructure.