



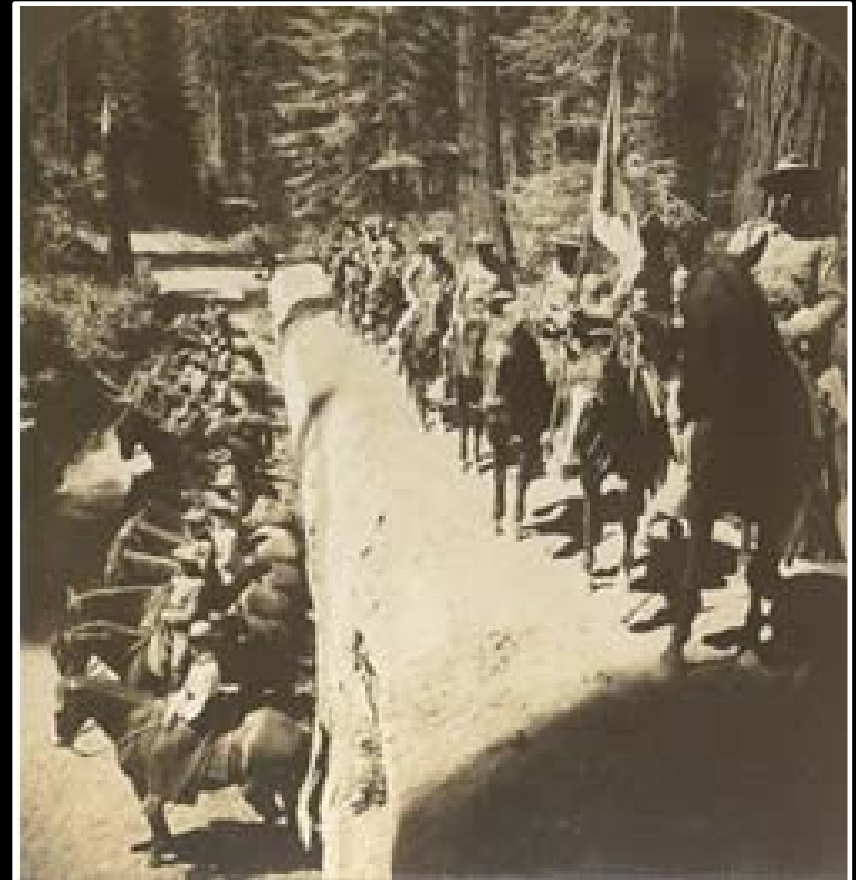
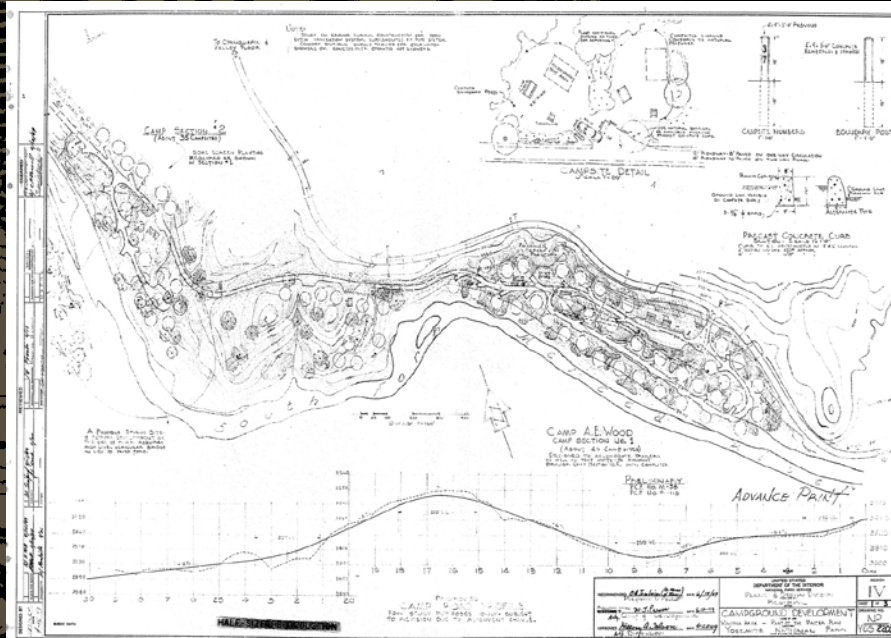
Merced Wild and Scenic River:

Cultural Resources & Historic Properties – Two Case Studies

David Humphrey
Park Historical Landscape Architect
Yosemite National Park

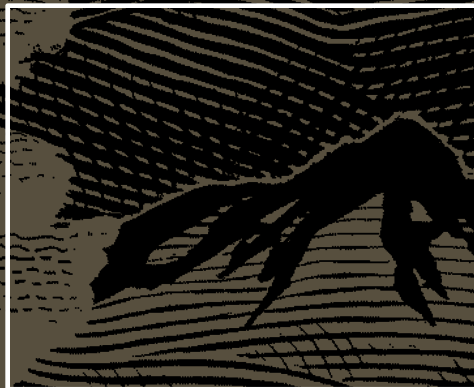
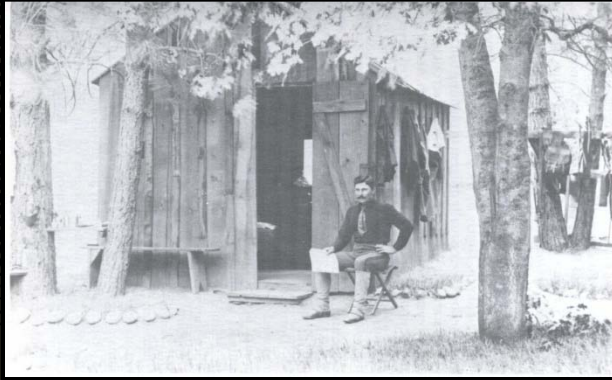


Camp A.E. Wood – Cavalry Camp - Wawona





Camp A.E. Wood – Cavalry Camp - Wawona

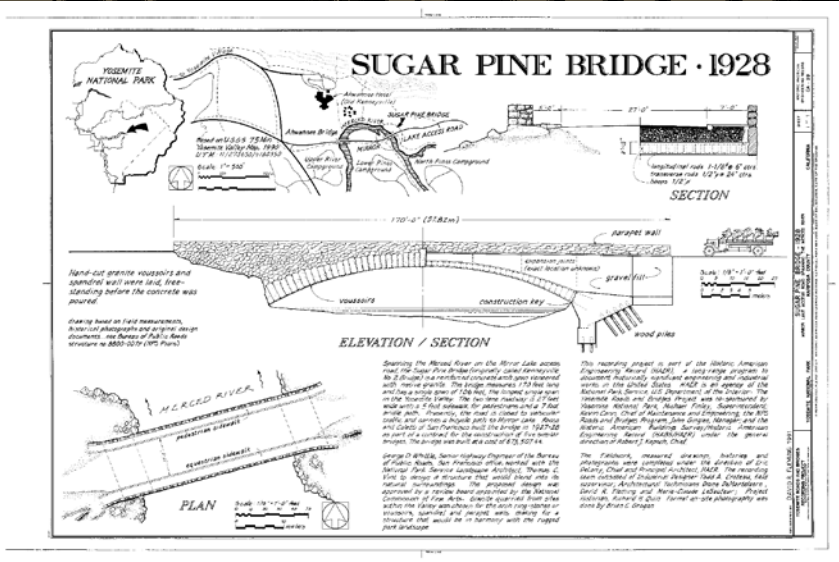


Typical threats & disturbances

- *Construction of park infrastructure*
- *Ongoing visitor use*
- *Surface erosion*
- *Vegetation growth*
- *Fuel buildup*



Historic Bridges in the Yosemite Valley



1 Log Bridges

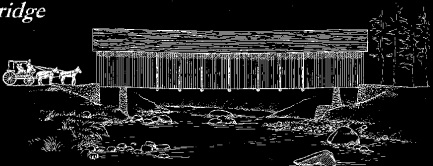
The earliest bridges were built of large logs and primarily used as footbridges. Simple queen post trusses were used for crossing short spans with heavier loads. This 3-panel bridge over Yosemite Creek was a modification of the king post truss with a horizontal chord for reinforcement.



Early bridge over Yosemite Creek

2 Wawona Covered Bridge

A covered bridge protects the interior wooden truss system from decay. The 1868 open deck bridge at Wawona was covered in 1879 and remains the only covered bridge in Yosemite. Outside the park but close to the boundary there was another covered bridge across the South Fork Tuolumne River.



3 Timber Truss Bridges

As spans grew longer and vehicle weights increased, more complex truss systems were employed. Such bridges spanned across Yosemite Creek and the Merced River in Yosemite Valley. Also the old Cascade Creek Bridge built in 1907 was timber truss construction.



Old bridge over Yosemite Creek 1884

4 Steel Truss Bridges

More expensive than wooden trusses, steel bridges were much more durable and could carry heavier loads. The second Sentinel Bridge - an early representative of this group - was erected in 1879 as an iron truss. Built in 1915, the old El Capitan Bridge was a combined timber and steel truss system.



Sentinel Bridge 1879

5 Reinforced Concrete Bridges

By 1920, concrete bridges had made their appearance on the Valley floor. Over time, most of them were replaced, like the Old Stoneman Bridge & the Old Sentinel Bridge. One of the earliest concrete bridges was erected in 1921 at Happy Isles. The original concrete railing was later replaced by a Mission 66 railing.



Old Happy Isles Bridge 1921

6 Early Rustic Concrete Bridges

By facing three simple reinforced concrete bridges at Bridalveil Falls with stone, the military set the precedent for rustic bridge design in 1913.





Historic Bridges and managing free flowing condition





...what are the contrasts between ORVs
and how do we reconcile them?

...what are the potential management
actions to deal with the various situations
that we collectively will be dealing with as
we move to the next stage in the planning
process?

