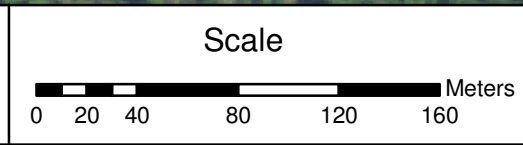


Legend

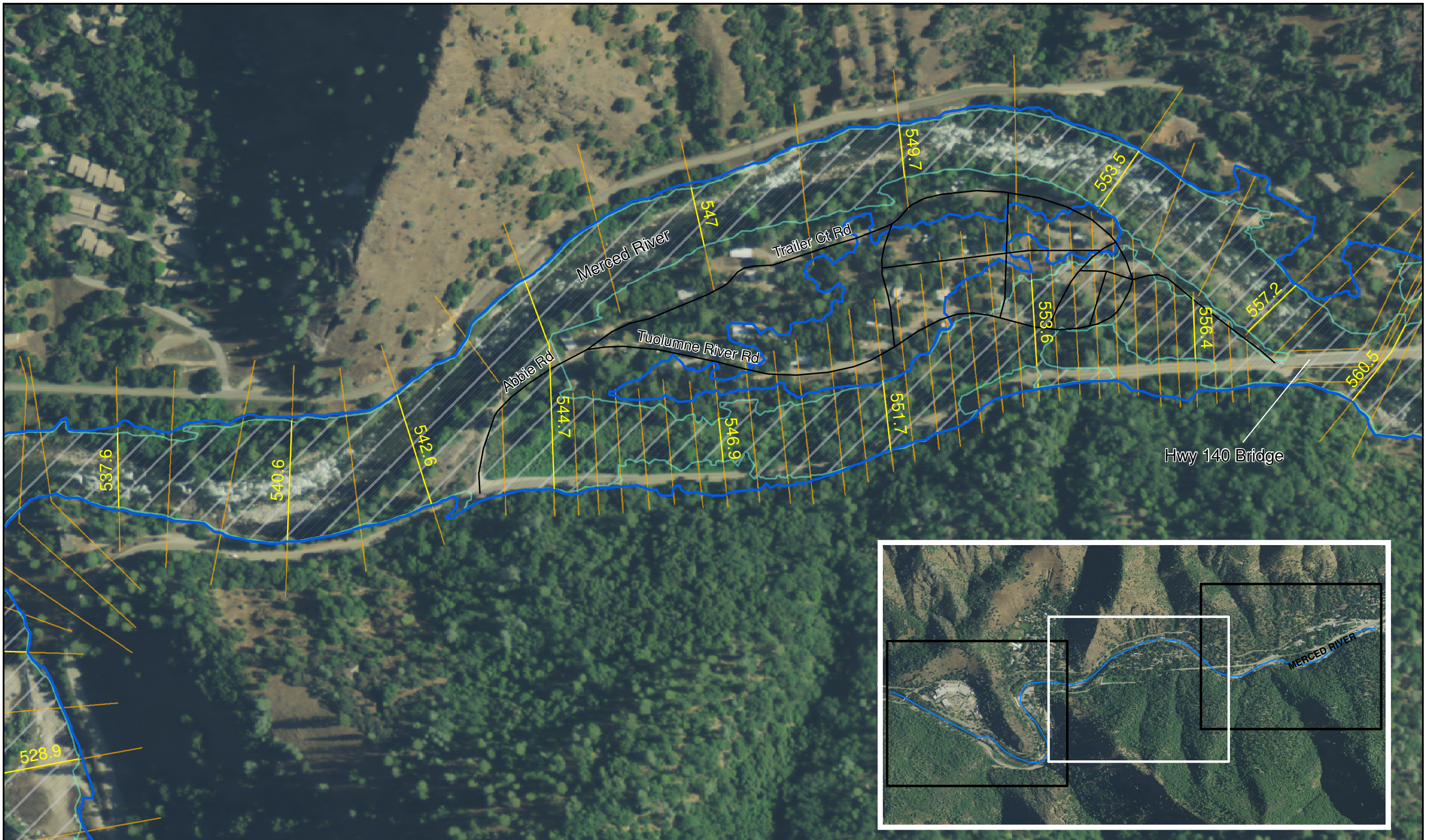
100 YR Flood
 500 YR Flood
 Base Flood Elevation (m)
 Cross Section



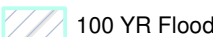
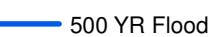

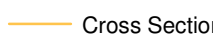
Project: Merced River - El Portal Reach
 Floodplain Map, Yosemite National Park
 Sheet 1 of 3

Date: January 24, 2011
 Project #: 100016881
 Drawn By: T.Chatrind
 Checked By: D.Hoffman





Legend

 100 YR Flood
  500 YR Flood
  Base Flood Elevation (m)
  Cross Section



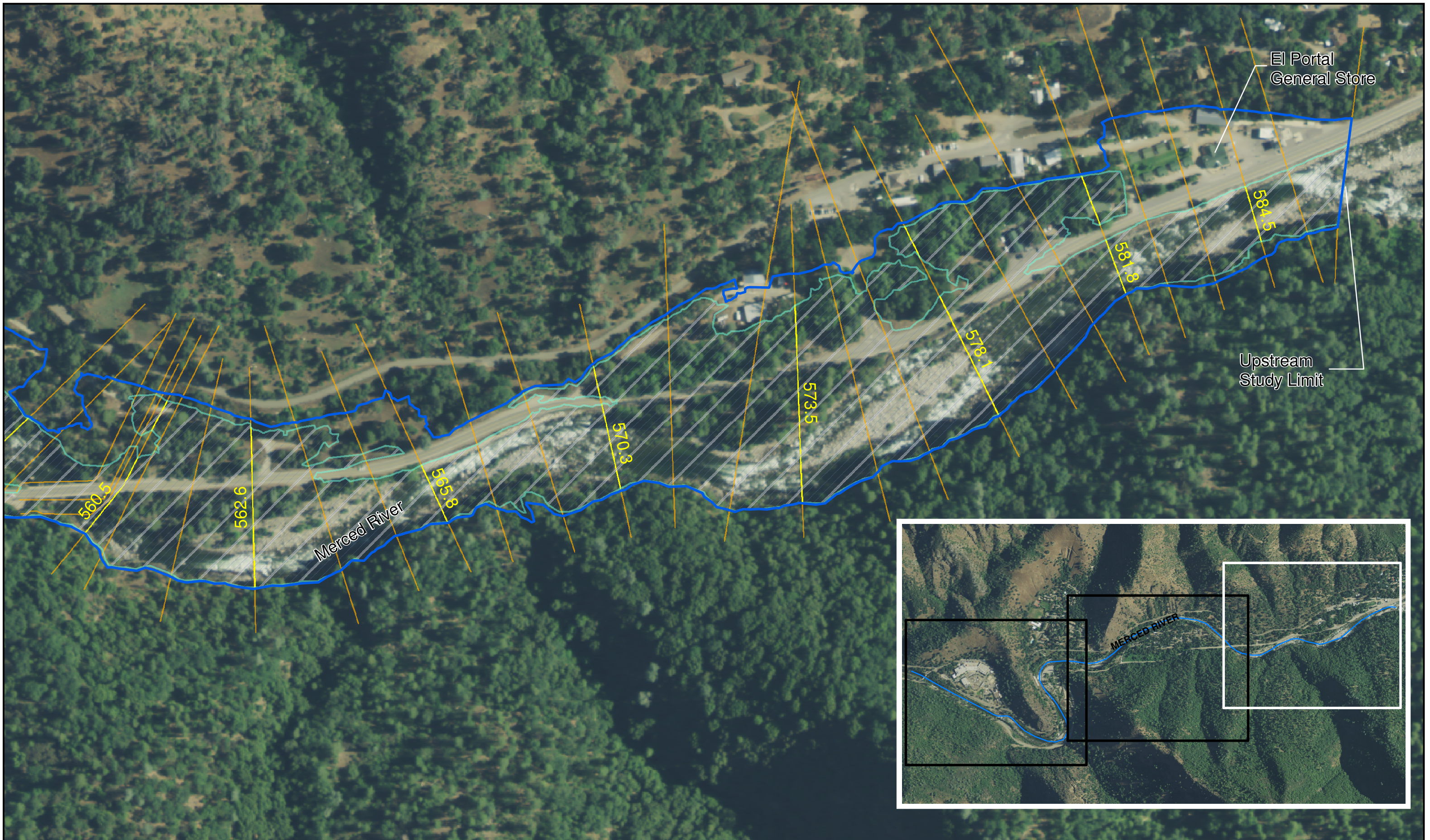
Scale

0 20 40 80 120 160 Meters

Project: Merced River - El Portal Reach
 Floodplain Map, Yosemite National Park
 Sheet 2 of 3

Date: January 24, 2011
 Project #: 100016881
 Drawn By: T.Chatriand
 Checked By: D.Hoffman



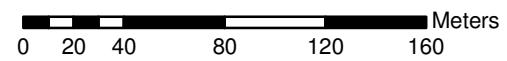


Legend

- 100 YR Flood
- 500 YR Flood
- Base Flood Elevation (m)
- Cross Section



Scale



Project: Merced River - El Portal Reach
 Floodplain Map, Yosemite National Park
 Sheet 3 of 3

Date: January 24, 2011
 Project #: 100016881
 Drawn By: T.Chatriand
 Checked By: D.Hoffman

