

PART 7: SPECIAL REGULATIONS, AREAS OF THE NATIONAL PARK SYSTEM

36 CFR §7.16 – YOSEMITE NATIONAL PARK

(c) Powerless flight requires a permit from the Superintendent.

Yosemite National Park

Park Roads

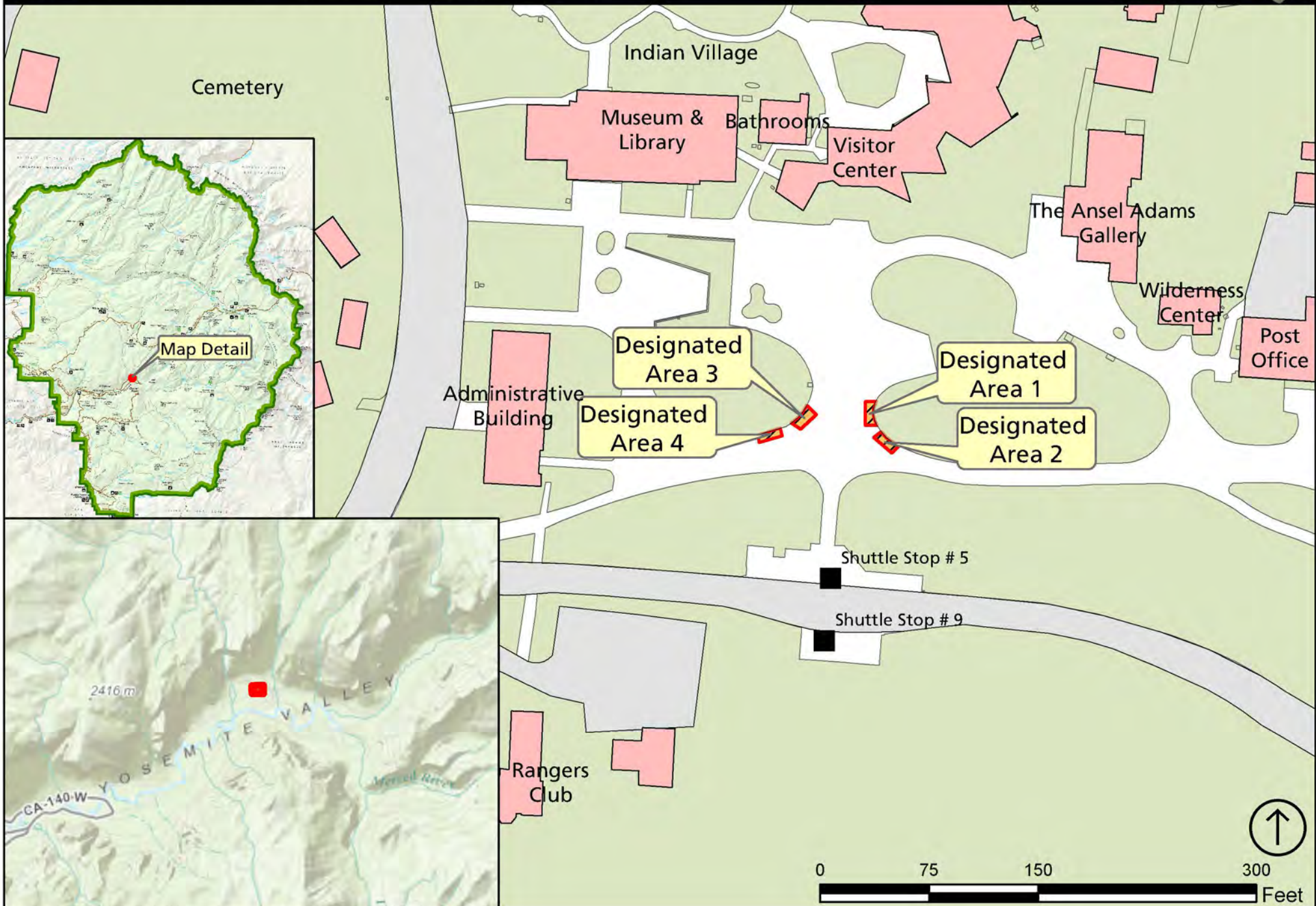
National Park Service
U.S. Department of the Interior



Yosemite National Park

Designated 1st Amendment Areas - Yosemite Valley

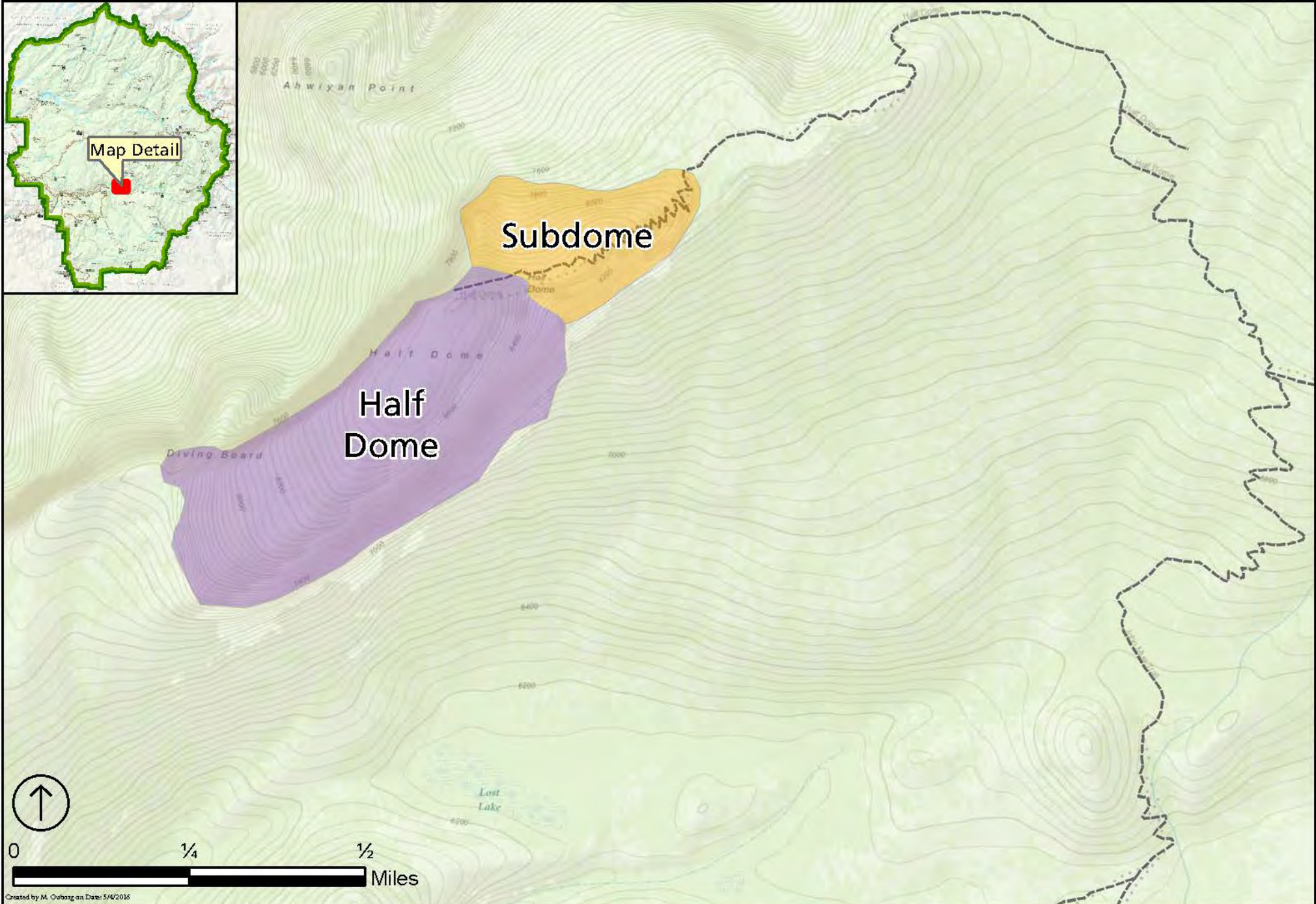
National Park Service
U.S. Department of the Interior



Yosemite National Park

Half Dome Area

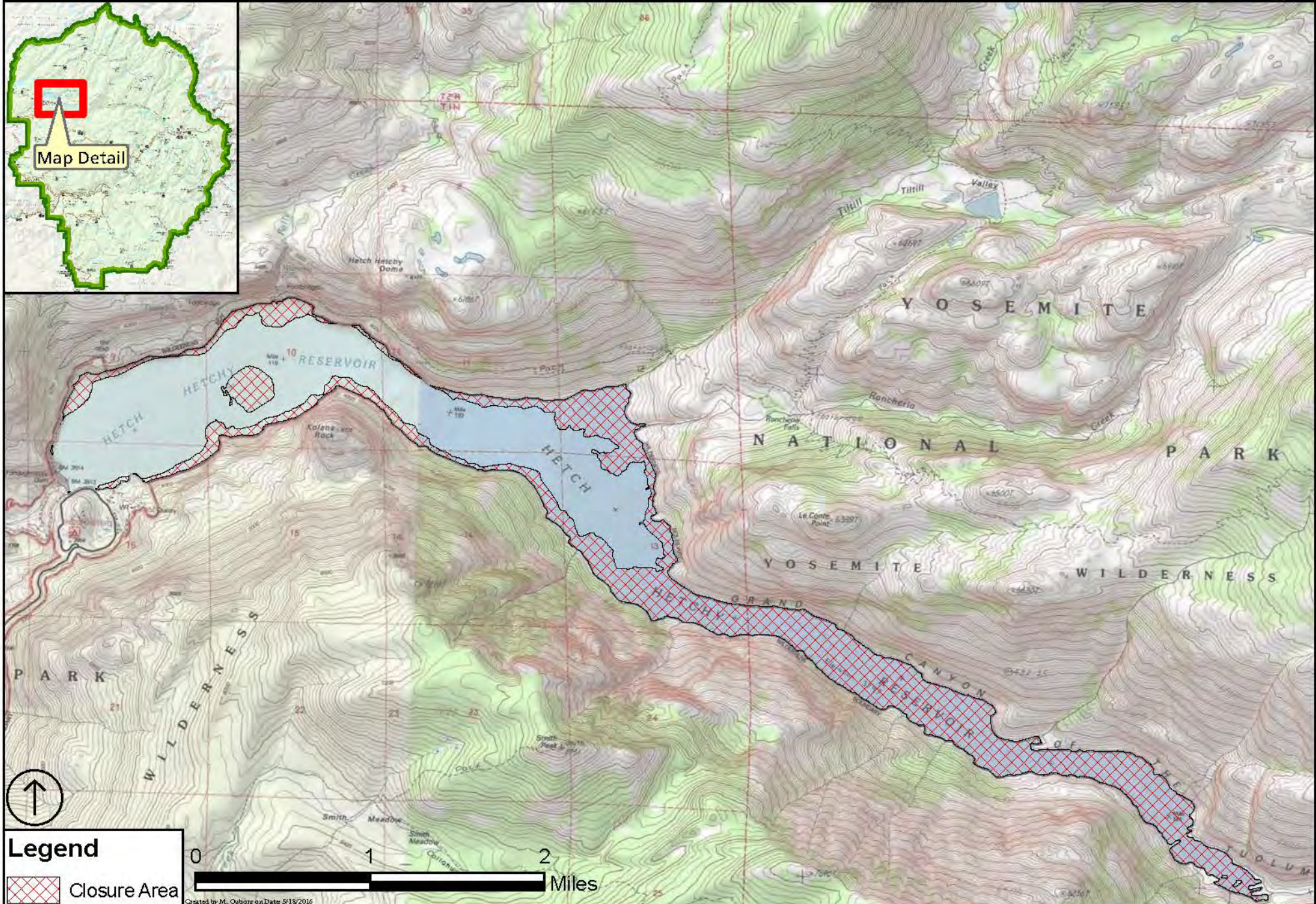
National Park Service
U.S. Department of the Interior



Yosemite National Park

Area Closure of Hetch Hetchy Reservoir Above Low Water (3,700 ft)

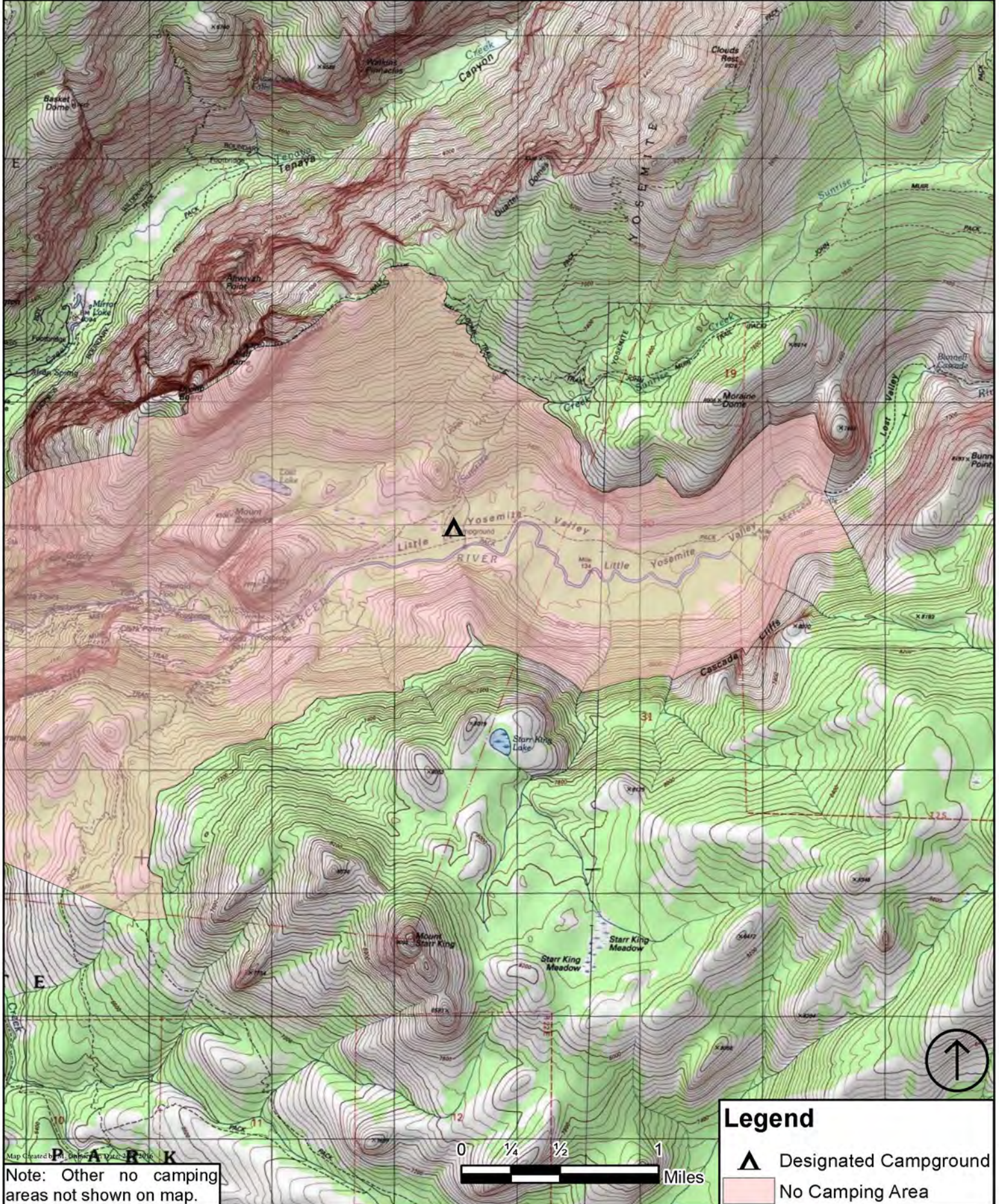
National Park Service
U.S. Department of the Interior



Yosemite National Park

Little Yosemite Valley Camping Area Closure

National Park Service
U.S. Department of the Interior



Yosemite National Park

Glen Aulin High Sierra Camp Area Closure

National Park Service
U.S. Department of the Interior



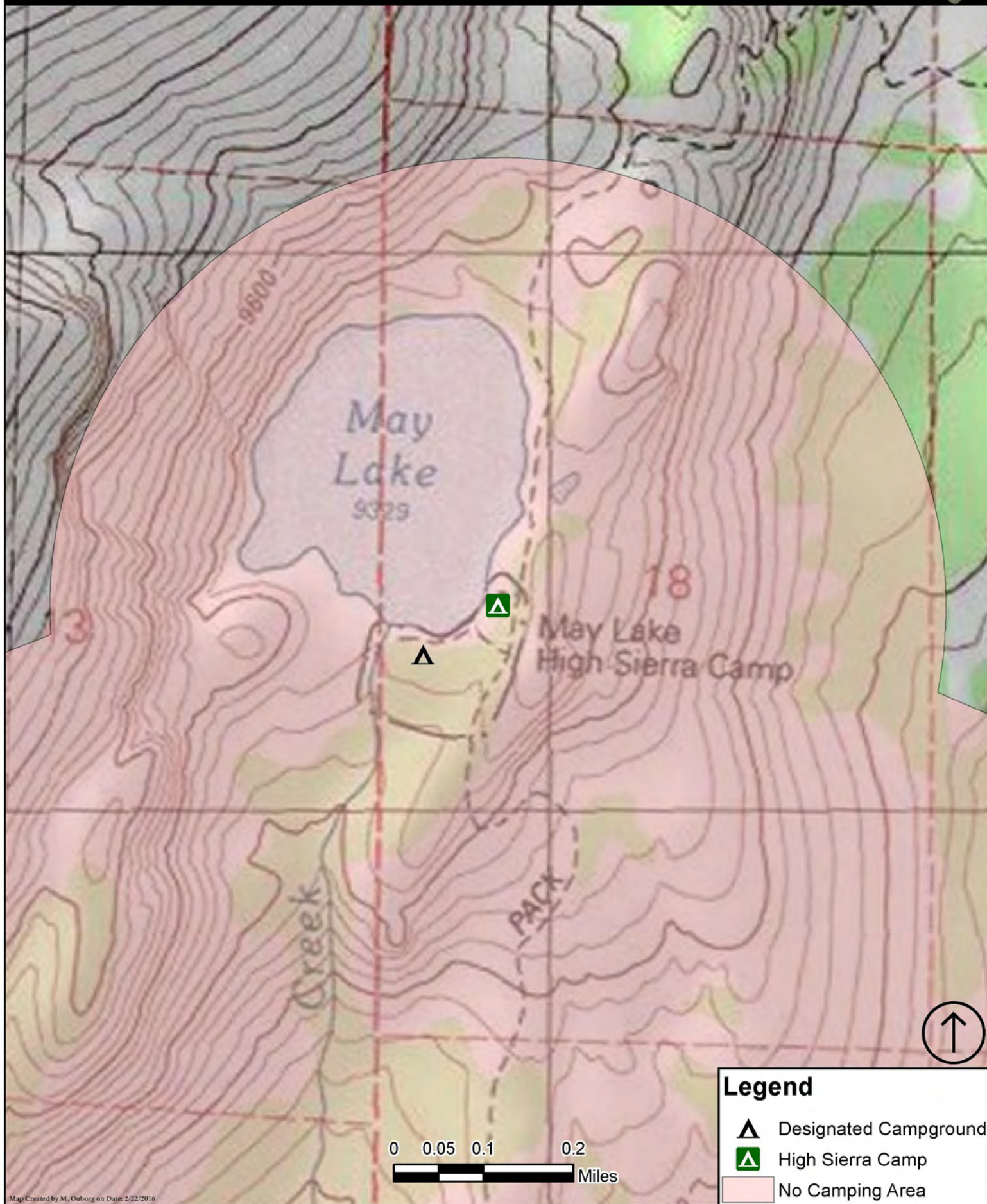
Legend

- Designated Campground
- High Sierra Camp
- No Camping Area

Yosemite National Park

May Lake High Sierra Camp Area Closure

National Park Service
U.S. Department of the Interior



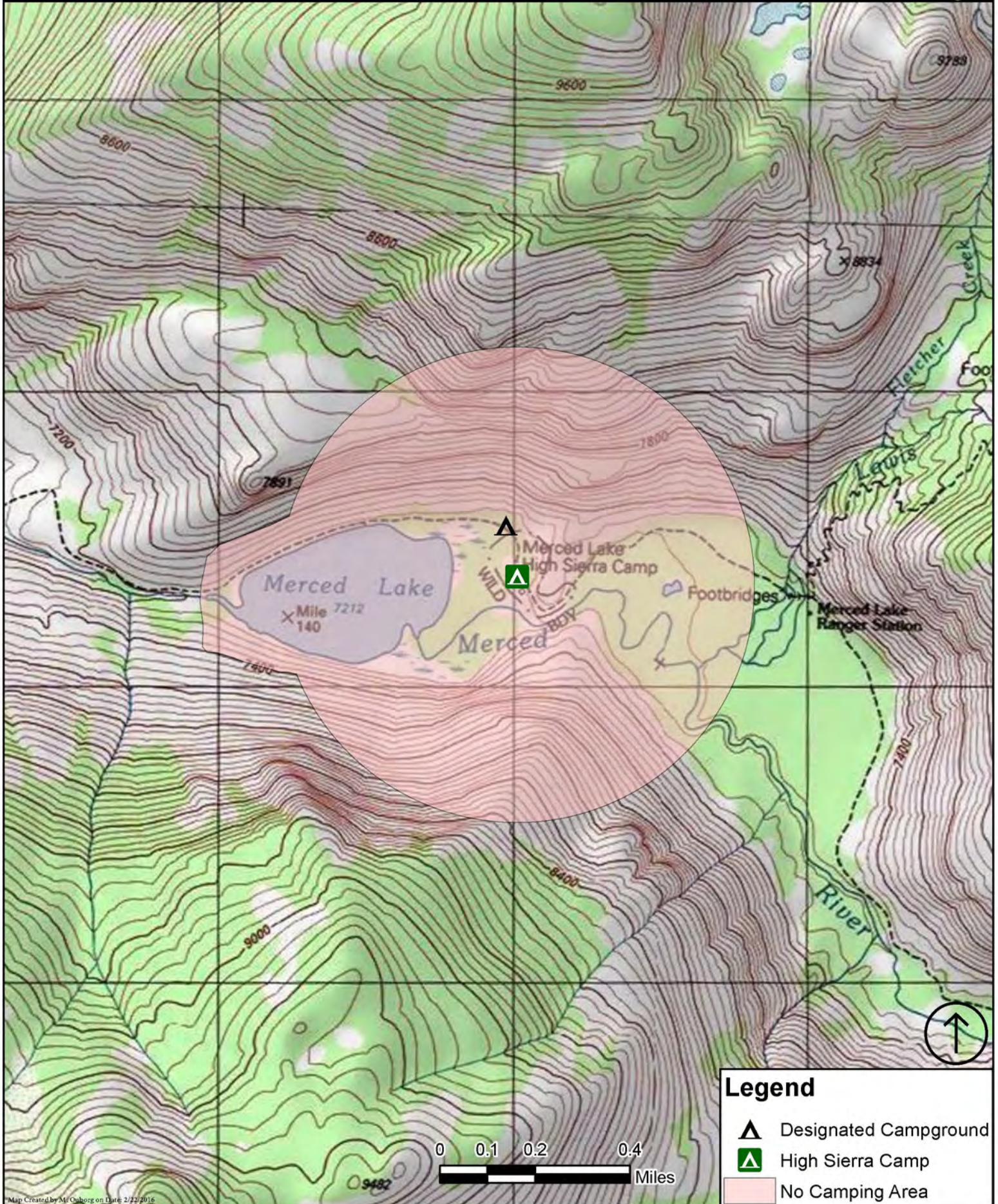
Legend

- Designated Campground
- High Sierra Camp
- No Camping Area

Yosemite National Park

Merced Lake High Sierra Camp Area Closure

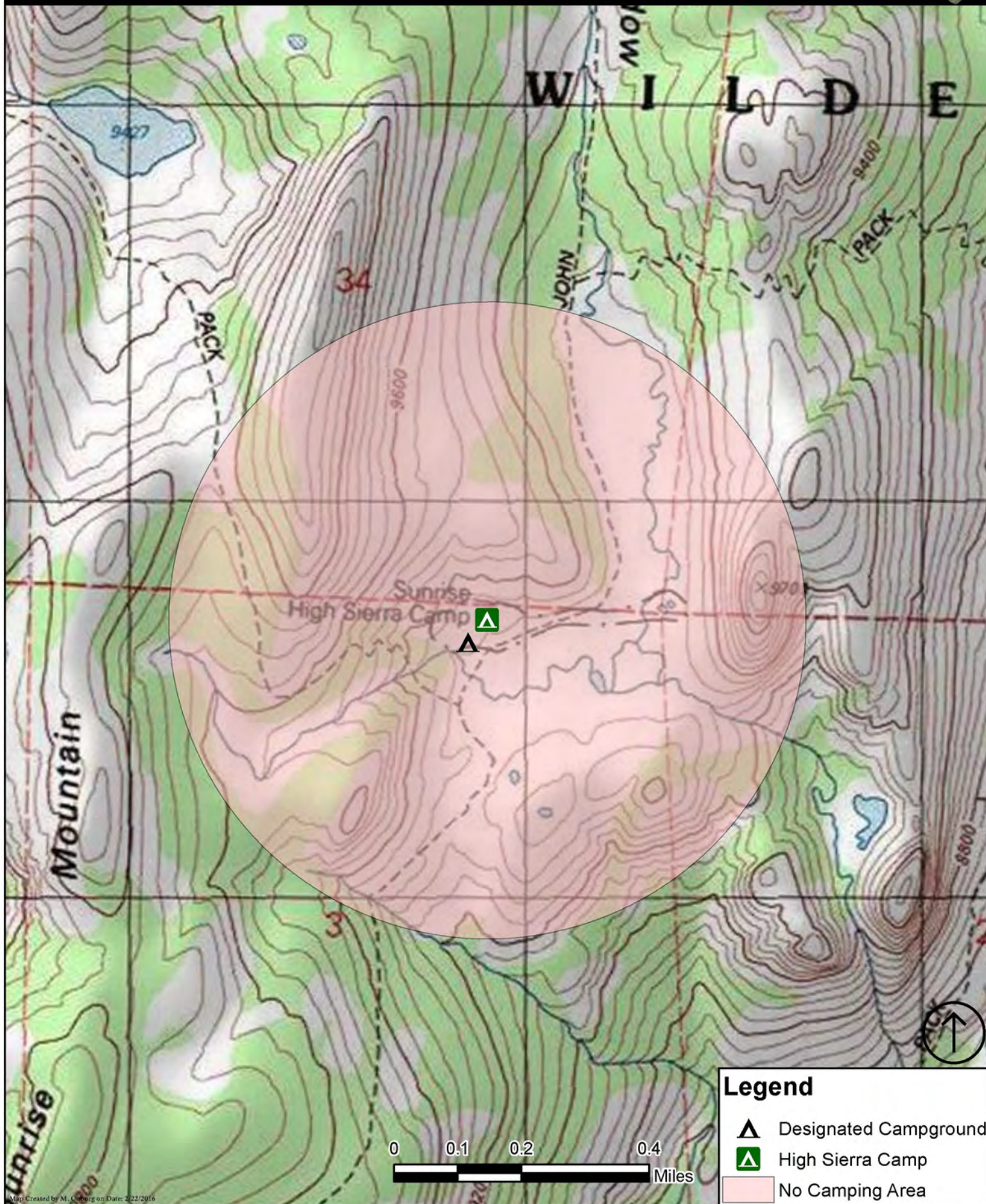
National Park Service
U.S. Department of the Interior



Yosemite National Park

Sunrise High Sierra Camp Area Closure

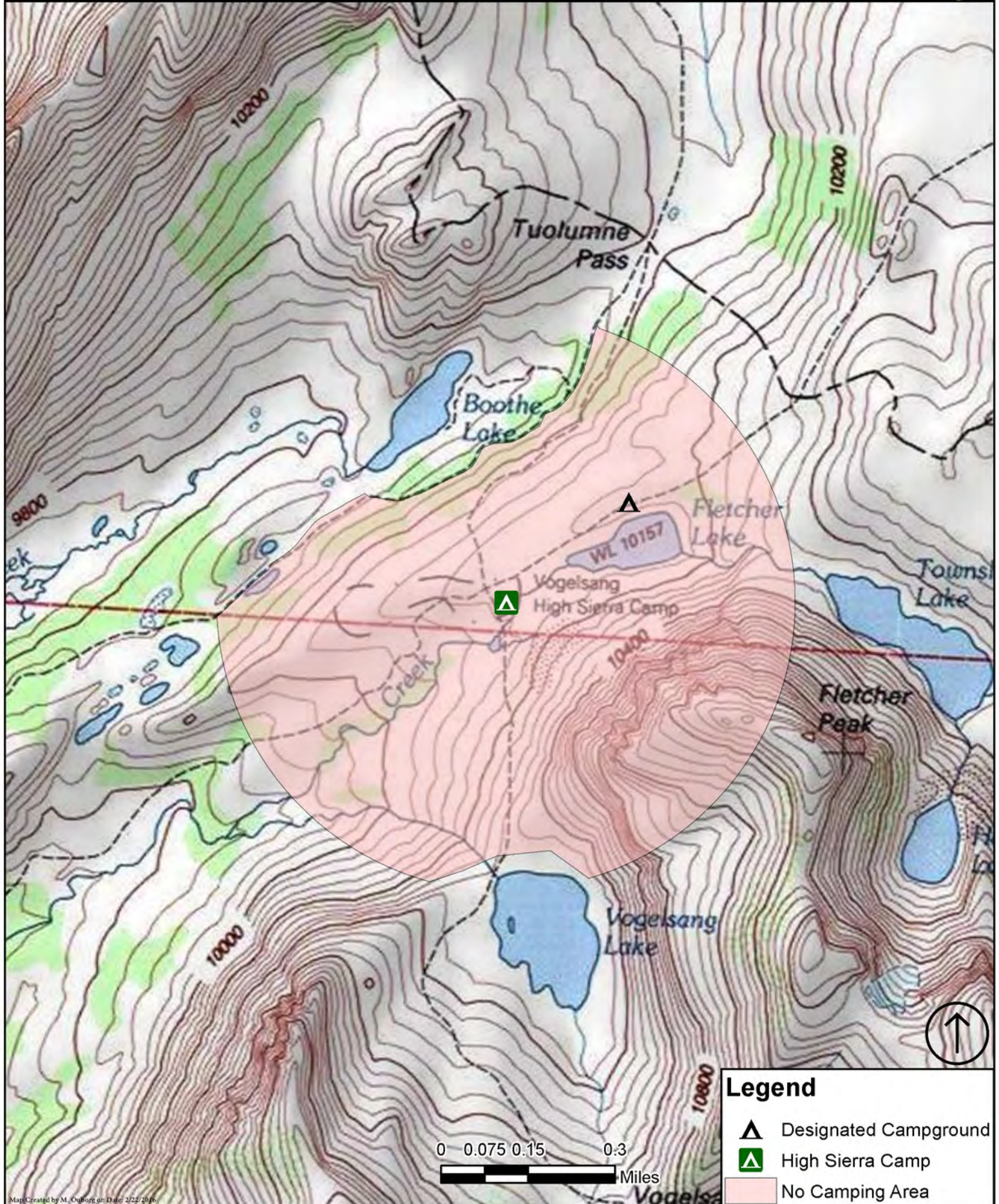
National Park Service
U.S. Department of the Interior



Yosemite National Park

Vogelsang High Sierra Camp Area Closure

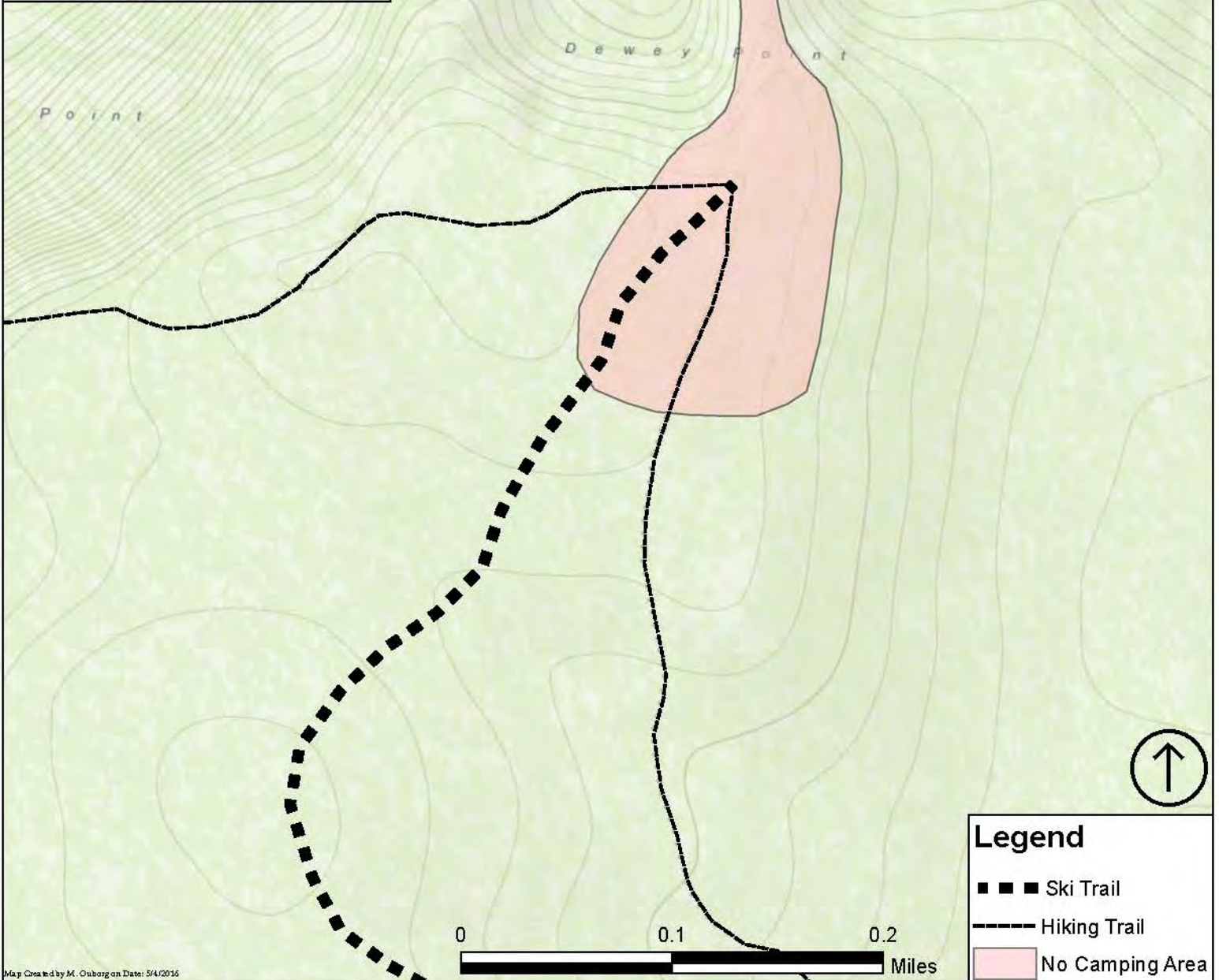
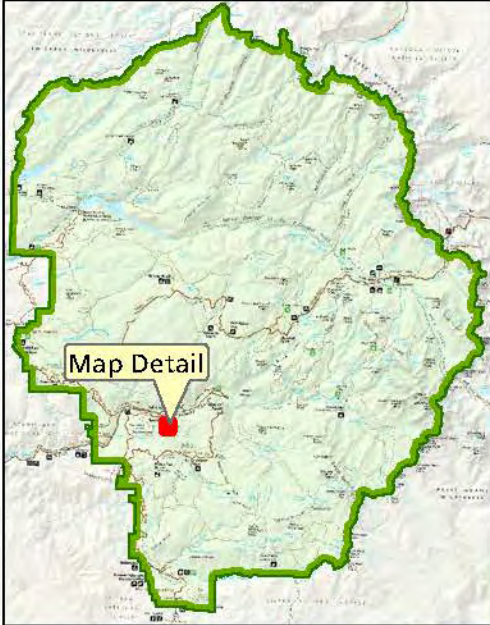
National Park Service
U.S. Department of the Interior



Yosemite National Park

Dewey Point No Camping Area

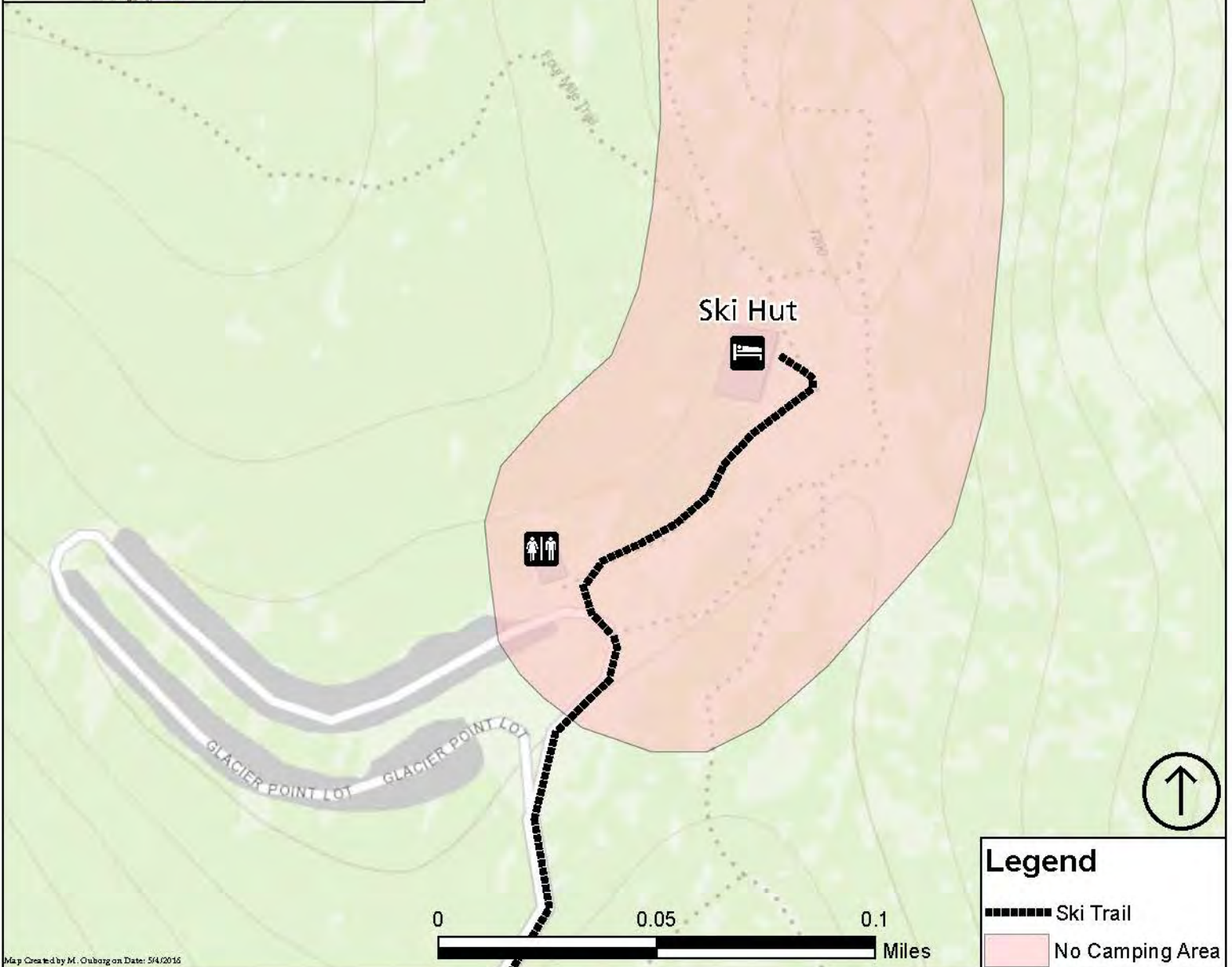
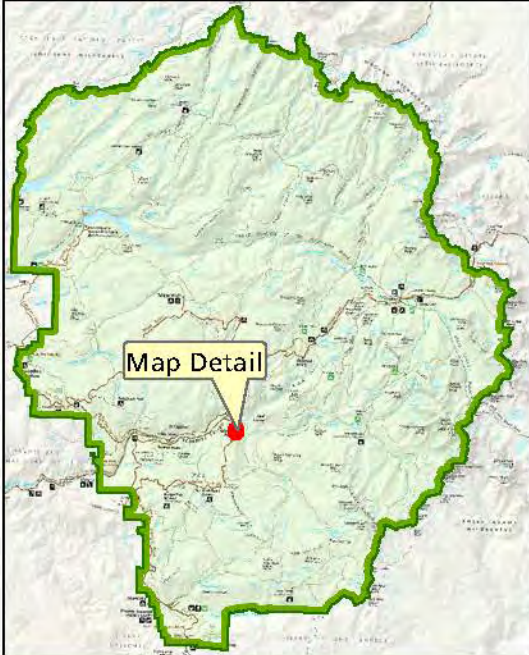
National Park Service
U.S. Department of the Interior



Yosemite National Park

Glacier Point No Camping Area

National Park Service
U.S. Department of the Interior






Yosemite National Park

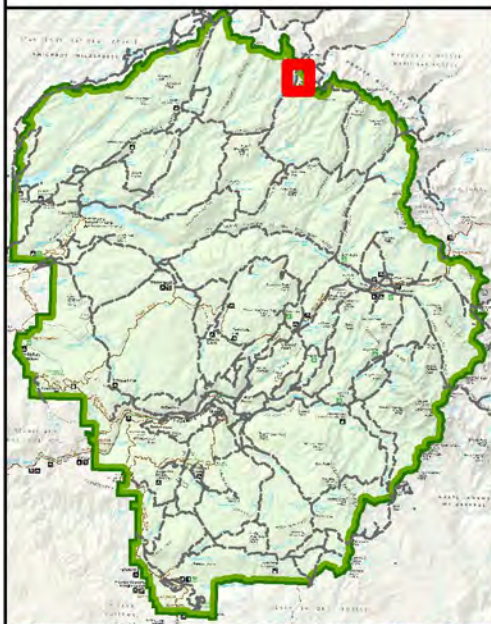
Upper Kerrick Canyon Meadow Closure

National Park Service
U.S. Department of the Interior

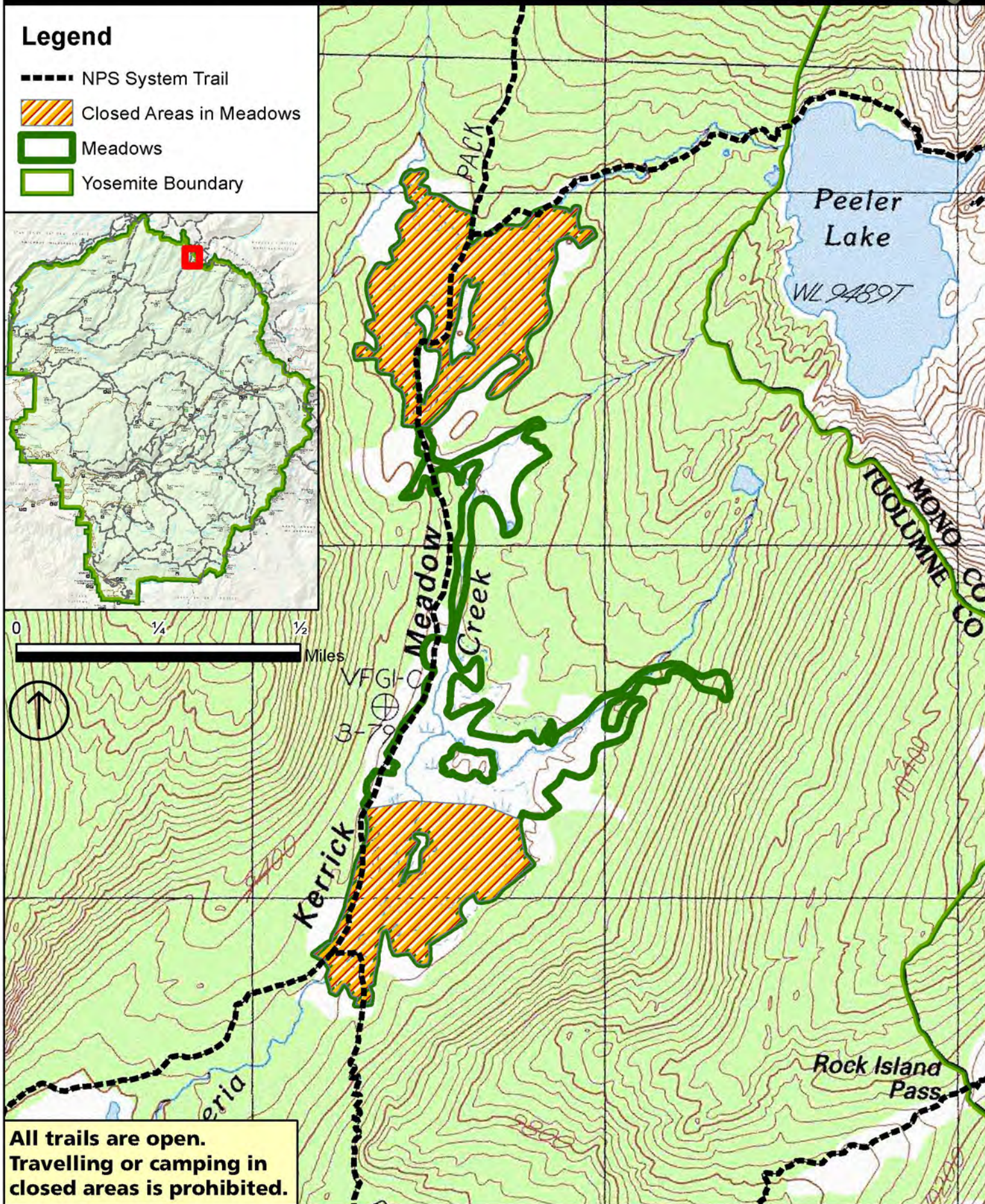


Legend

- NPS System Trail
-  Closed Areas in Meadows
-  Meadows
-  Yosemite Boundary



0 1/4 1/2 Miles



All trails are open.
Travelling or camping in
closed areas is prohibited.

Allowed Canisters

Model 812 Backpackers' Cache (Garcia)

www.backpackerscache.com

BearVault 110B, 200, 250, 300, 350, 400, 450, and 500

www.bearvault.com

The Bearikade Weekender (1766 and higher) and The Bearikade Expedition MKII (1766 and higher)

www.wild-ideas.net

The Bear Keg (Counter Assault)

www.counterassault.com

The Bare Boxer Contender (101) and Champ (202)

www.bareboxer.com

Lighter1 Big Daddy and Lil' Sami

www.lighter1.com

UDAP No-Fed-Bear

www.udap.com

Purple Mountain Engineering Tahoe

(This canister is no longer in production or available for purchase)

Allowed Backpacks

Wise Backpack by Craftsman Tech Composites (hard-sided backpack)

Allowed Panniers

DeCarteret Aluminum Stock Panniers

Berner Bear Box

303/343-1998

Bear Aware Panniers

www.bear-aware.com

Bear Country Camping Models SFO and HFO

www.bearcountrycontainer.com/catalog.html

Outfitters Supply TrailMax Bear Proof Pack Panniers

www.outfitterssupply.com

Steel salvage drums with a security lid may be used until panniers are purchased.

Lab Safety Supply Company (Model 9M-9117, 8 gallon open head)

www.labsafety.com