



Roughly 1,491 plant taxa occur in Yellowstone National Park. The whitebark pine, shown here and found in high elevations in the Greater Yellowstone Ecosystem, is an important native species in decline.

Vegetation

The vegetation communities of Yellowstone National Park include overlapping combinations of species typical of the Rocky Mountains and the Great Plains to the east and the Intermountain region to the west. The exact vegetation community present in any area of the park reflects the underlying geology, ongoing climate change, substrates and soils, and disturbances created by fire, floods, landslides, blowdowns, insect infestations, and the arrival of nonnative plants.

Today, the roughly 1,491 native taxa in the park represent the 1,404 species that have historically persisted in the area that recolonized after glaciers, lava

flows, and other major disturbances. Yellowstone is home to three endemic plant species, all of which are tightly tied to the park’s thermal features. Most vegetation management in the park is focused on minimizing human-caused impacts to native plant communities where feasible.

Vegetation Communities

There are several vegetation communities in Yellowstone: higher- and lower-elevation forests and the understory vegetation associated with them, sagebrush-steppe, wetlands, and hydrothermal.

Quick Facts

Number in Yellowstone

Native plant taxa: 1,491:

- Hundreds of wildflowers.
- Trees: nine conifers (lodgepole pine, whitebark pine, Engelmann spruce, white spruce, subalpine fir, Douglas-fir, Rocky Mountain juniper, common juniper, limber pine) and some deciduous species, including quaking aspen and cottonwood.
- Shrubs: include common juniper, sagebrush (many species), Rocky Mountain maple.

- Three endemic species (found only in Yellowstone): Ross’s bentgrass, Yellowstone sand verbena, Yellowstone sulfur wild buckwheat.

Nonnative plant taxa: 238.

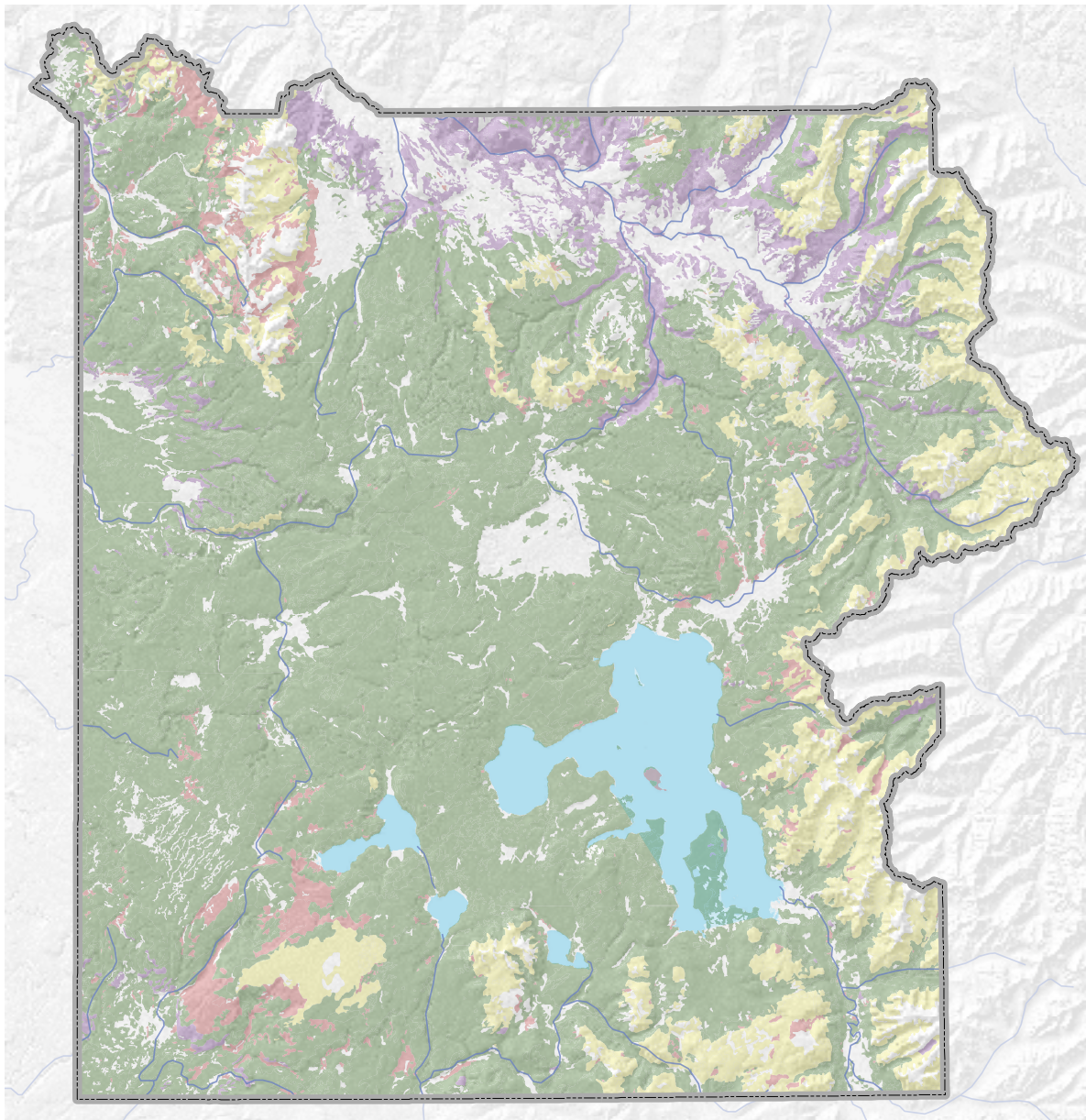
Characteristics

- Vegetation in Yellowstone is typical of the Rocky Mountains.
- Elements of the Great Plains and Great Basin floras mix with Rocky Mountain vegetation in the vicinity of Gardiner and Stephen’s Creek.
- Hydrothermal areas support unique plant communities and rare species.

Management Issues

- Controlling nonnative species, which threaten native species, especially near developed areas; some are spreading into the backcountry.
- Park partners are monitoring whitebark pine, white pine blister rust, and forest insect pests.
- Biologists survey areas for sensitive or rare vegetation before a disturbance such as constructing a new facility.
- Park managers are restoring areas of disturbance.

Vegetation Communities in Yellowstone National Park



■ Lodgepole pine forests

Dominate more than 80% of the total forested area.
Can be seral (developing) or climax.
Climax forests underlain by rhyolite.

■ Spruce-fir forests

Engelmann spruce/subalpine fir dominate older forests.
Usually found on moist and/or fertile substrates.
Climax forests underlain by andesitic soils.

■ Whitebark pine forests

Major overstory component above 8,400 feet.
Major understory component of lodgepole-dominated forests from 7,000 to 8,400 feet.
Seeds are ecologically important food for a variety of wildlife species.

■ Douglas-fir forests

Associated with the Lamar, Yellowstone, and Madison river drainages below 7,600 feet.
Often fewer than 20 inches annual precipitation.
More frequent historic fire interval (25–60 year) than other forest communities in the park.

■ Non-forest

Includes grasslands, sagebrush, alpine meadows, talus, and hydrothermal environments.

Encompasses the moisture spectrum from dry sagebrush shrublands to wet alpine meadows.
Provides the winter and summer forage base for ungulates.

Other communities not shown on map

Aspen—found in small clones interspersed among the sagebrush/forest ecotone (transition zone) along the Yellowstone, Madison, and Snake river drainages.

Wetland—Wetlands include wet meadows, forested wetlands, springs, and seeps comprised of woody vegetation, forbs, rushes, sedges, and grasses. Some are thermally influenced.

Riparian—typically streamside vegetation includes cottonwoods, willows, and various deciduous shrubs.

More Information

- Craighead, J.J. et al. 1963. *A Field Guide to Rocky Mountain Wildflowers from Northern Arizona and New Mexico to British Colombia*. Boston: Houghton Mifflin.
- Cronquist et al. (ongoing, currently 6 volumes)
Intermountain Flora. New York Botanical Garden.
- Despain, D. 1990. *Yellowstone Vegetation: Consequences of Environment and History in a Natural Setting*. Boulder: Roberts Rinehart.
- Dorn, B. 2001. *Vascular Plants of Wyoming*. 3rd edition.
- Elliot, C.R. and M.M. Hektner. 2000. Wetland Resources of Yellowstone National Park. YNP: Wyoming. Out of print, available at www.nps.gov/yell
- Hitchcock and Cronquist. 1974. *Flora of the Pacific Northwest*. Seattle: UWashingon Press.
- Hitchcock et al. *Vascular Plants of the Northwest* (5 volumes). Seattle: UWashingon Press.
- Kershaw et al. 1998. *Plants of the Rocky Mountains*. Lone Pine Publishing.
- Preston, R.J. 1968. *Rocky Mountain Trees: A Handbook of the Native Species with Plates and Distribution Maps*. New York: Dover.
- Romme, W.H. and D.H. Knight. 1982. Landscape diversity: The concept applied to Yellowstone National Park. *Bioscience*. 32:8.
- Shaw, R.J. 1964. *Trees and Flowering Shrubs of Yellowstone and Grand Teton national parks*. Salt Lake City: Wheelwright Press.
- Shaw, R.J. 1992. *Wildflowers of Yellowstone and Grand Teton national parks*. Salt Lake City: Wheelwright Press.

Staff Reviewers

Heidi Anderson, Botanist and Wetland Ecologist
Steven Bekedam, Vegetation Program Lead



Douglas-fir forests occur at lower elevations and are associated with the Lamar, Yellowstone, and Madison river drainages in Yellowstone National Park.

Forests

Forests cover roughly 80% of the park. Lodgepole pine, Engelmann spruce, subalpine fir, whitebark pine, and limber pine are the most common tree species encountered.

Though ubiquitous throughout the park, Douglas-fir is particularly abundant in the northern region. Their thick bark enables them to tolerate low-intensity fire. Some of the trees in these forests are estimated to be several hundred years old and exhibit fire scars from a history of low-intensity ground fires. In contrast, lodgepole pine trees have very thin bark which makes this species more susceptible to mortality from ground fires.

In high elevation areas where andesite volcanic rock is prevalent, older forests are dominated by Engelmann spruce and subalpine fir. Historically, these areas were likely dominated by lodgepole pine.

However in the absence of fire, Englemann spruce and subalpine fir thrived, replacing lodgepole as the main overstory species. In present-day lodgepole forests, Englemann spruce and subalpine fir are a common understory component.

Lodgepole is dominant on rhyolitic soils which are poor in nutrients essential for subalpine fir and Engelmann spruce. At higher elevations, such as the Absaroka Mountains and the Washburn Range, whitebark pine is a significant forest component. In the upper subalpine zone, whitebark pine, Engelmann spruce, and subalpine fir often co-occur in island stands of timber separated by subalpine meadows. In treeline environments where conditions are extreme, whitebark pine take on a krumholtz, or stunted, shrub-like growth form where most of the “tree” is protected below the snow from winter’s wind and desiccating effects.

Common Conifers

Higher-Elevation Species

Lodgepole Pine (*Pinus contorta*)

- Most common tree in park, 80% of canopy
- Needles in groups of two
- Up to 75 feet tall

Engelmann Spruce (*Picea engelmannii*)

- Often along creeks, or around wet areas
- Sharp, square needles grow singly
- Cones hang down and remain intact with no bract between scales
- Up to 100 feet tall

Subalpine Fir (*Abies lasiocarpa*)

- Only true fir in the park
- Blunt, flat needles
- Cones grow upright, disintegrate on tree
- Up to 100 feet tall

Limber Pine (*Pinus flexilis*)

- Needles in groups of five
- Young branches are flexible
- Cones green in color
- Often on calcium-rich soil
- Up to 75 feet tall

Whitebark Pine (*Pinus albicaulis*)

- Grows above 7,000 feet
- Needles in groups of five
- Cones deep purple in color
- Up to 75 feet tall

Lower-Elevation Species

Douglas-Fir (*Pseudotsuga menziesii*)

- Resembles fir and hemlock, hence its generic name *Pseudotsuga*, which means “false hemlock”
- Cones hang down and remain intact, with three-pronged bract between scales
- Up to 100 feet tall

Rocky Mountain Juniper (*Juniperus scopulorum*)

- Needles scale-like
- Cones are small and fleshy
- Up to 30 feet tall

Lodgepole Pine (*Pinus contorta*)

The lodgepole pine is by far the most common tree in Yellowstone. Early botanical explorers first encountered the species along the West Coast where its wind-contorted stature earned it the name *Pinus contorta*. The Rocky Mountain variety, which grows very straight, is *Pinus contorta* var. *latifolia*. Some American Indian tribes used this tree to make the frames of their tipis or lodges, hence the name “lodgepole” pine.

Description

Lodgepoles are the only pine in Yellowstone whose needles grow in bundles of two. The bark is typically somewhat brown to yellowish and a grayish-black fungus often grows on the shady parts of the bark, giving the tree a dark hue.

The species is shade intolerant, as such, when growing in large, dense stands, branches in the shade below the canopy will wither and fall off the tree. When growing individually, branches often remain to the base of the trunk given the full-tree exposure to sunlight.

Reproduction

Like all conifers, lodgepole pines have both male and female cones. The male cones produce huge quantities of yellow pollen in June and July. This yellow pollen is often seen in pools of rainwater around the park or at the edges of lakes and ponds.

The lodgepole’s female cone takes two years to mature. In the first summer, the immature cones look like tiny, ruby-red miniature cones near the end of the branches. The following year, after fertilization, the cone starts to grow rapidly and turns a conspicuous green hue. Female cones will either open at maturity and subsequently release their seeds, or they remain closed. Cones that remain closed—a state known as serotiny—can hang on the branches for years until they are subjected to high heat such as a forest fire. Shortly after the tree ignites, the cones open, seeds are released over the charred area, and the forest has been in effect, replanted. Trees lacking serotinous cones (Engelmann spruce, subalpine fir, Douglas-fir, whitebark pine, and limber pine) rely on wind, animals, or other agents to distribute their seeds to other locations.



Lodgepole pine forests are the most common in Yellowstone. A lodgepole’s serotinous cones need to be exposed to the high heat of a forest fire for the seeds to be released. Cones that do not disperse their seeds as a direct result of fire, open at the end of their second summer when seeds are mature.

Habitat

Lodgepole pines prefer slightly acidic soil and will grow quickly in mineral soils disturbed by fire or humans, such as road openings in the forest. Their roots spread out sideways and do not extend deeply into the soil—an advantage in Yellowstone where the topsoil is only about 6 to 12 inches deep, but a disadvantage in high winds. Lodgepole pines are vulnerable in windstorms, especially individuals that are isolated or in the open.

In addition to reseeding effectively after disturbance, lodgepole pines can grow in conditions ranging from very wet ground to very poor soil prevalent within the Yellowstone Caldera. This flexibility allows the species to occur in habitats that are inhospitable to other forest species.

Lodgepole pine are dependent on sunny conditions for seedling establishment and survival. In the Yellowstone region where soils are well-developed, lodgepole pine forests are often succeeded by more shade-tolerant seedlings of subalpine fir and Englemann spruce. In lodgepole pine forests growing on nutrient-poor soils, subalpine fir and Englemann spruce are typically minor components of the forest. Here, aging, overstory lodgepole pine are commonly replaced by young, understory lodgepole pine.

Whitebark Pine (*Pinus albicaulis*)

Whitebark pine occur at high elevations in subalpine communities in the northern Rocky Mountains and the Pacific Northwest. This hardy tree grows in areas with poor soils, high winds, and steep slopes that are inhospitable to other tree species. Whitebark pine is an important conifer in these upper ranges where it retains snow and reduces erosion, acts as a nurse plant for other subalpine species, and produces seeds that are an important food for birds, grizzly bears, and other wildlife. Whitebark pine produce wingless seeds and rely primarily on Clark's nutcrackers (*Nucifraga columbiana*) for seed dispersal.

Substantial mortality in whitebark populations has been documented throughout its range. Decreases are attributed to the introduced pathogen white pine blister rust (*Cronartium ribicola*); native mountain pine beetle (*Dendroctonus ponderosae*); historic wildland fire suppression resulting in more frequent, larger, and hotter wildfires; and projected environmental factors associated with climate change. These agents, both individually and collectively, pose a significant threat to the persistence of healthy whitebark pine populations on the landscape. As a result, whitebark pine was listed as threatened under the Endangered Species Act in January of 2023.

A reported 27–42% of whitebark pine trees taller than 1.4 meters are infected with blister rust in the Greater Yellowstone region. As of 2023, 1,953 of the more than 5,500 monitored trees had died, including 60% of those in the >10 cm in diameter size classes. In addition, the Greater Yellowstone Network has estimated that by the end of 2023, 29% of whitebark pine trees >1.4 meters tall had died.

Aerial surveys, which measure the spatial extent of mortality rather than the percentage of individual dead trees counted on the ground, have generally produced higher whitebark pine mortality estimates in the Greater Yellowstone Ecosystem. This could be because larger trees, which occupy more of the area in the forest canopy visible from the air, are more likely to be attacked by beetles, which prefer larger trees for laying their eggs. In 2013, an aerial survey method called the Landscape Assessment System was used to assess mountain pine beetle-caused mortality of whitebark pine across the region. Results of the one-time study indicate that nearly half (46%) of the GYE whitebark pine distribution showed severe mortality, 36% showed moderate mortality, 13% showed low mortality, and



The needles of a whitebark pine are clustered in groups of five.

5% showed trace levels of mortality.

Despite the high percentage of large trees that have died, trees are continuing to produce cones, and regeneration is still occurring. The network estimated an average growth of 63 small trees per 500 m² by the end of 2023.

More Information

- Gibson, K. 2006. Mountain pine beetle conditions in whitebark pine stands in the Greater Yellowstone Ecosystem, 2006. Missoula, MT: USDA Forest Service, Forest Health Protection, Missoula Field Office.
- Macfarlane, W.W., J.A. Logan, and W.R. Kern. 2013. An innovative aerial assessment of Greater Yellowstone Ecosystem mountain pine beetle-caused whitebark pine mortality. *Ecological Applications* 23(2):421–37.
- Mahalovich, M. F. 2013. Grizzly Bears and Whitebark Pine in the Greater Yellowstone Ecosystem. Future Status of Whitebark Pine: Blister Rust Resistance, Mountain Pine Beetle, and Climate Change. US Forest Service. Report Number: 2470 RRM-NR-WP-13-01.
- Shanahan, E., K. M. Irvine, D. Thoma, S. Wilmoth, A. Ray, K. Legg, and H. Shovic. 2016. Whitebark pine mortality related to white pine blister rust, mountain pine beetle outbreak, and water availability. *Ecosphere* 7(12).
- Shanahan, E., K. Legg, and R. Daley. 2017. Status of whitebark pine in the Greater Yellowstone Ecosystem: A step-trend analysis with comparisons from 2004 to 2015. Natural Resource Report NPS/GRYN/NRR-2017/1445. National Park Service, Fort Collins, Colorado.
- Shanahan, E., W.J. Wright, and K.M. Irvine. 2021. Adaptive monitoring in action: Reconsidering design-based estimators reveals underestimation of whitebark pine disease prevalence in the Greater Yellowstone Ecosystem. *Journal of Applied Ecology*, in press.
- Tomback, D.F., S.F. Arno, and R.E. Keane. 2001. *Whitebark pine communities: Ecology and restoration*. Washington, DC: Island Press.

Staff Reviewer

Erin Shanahan, Ecologist, Greater Yellowstone Network
Kristin Legg, Program Manager, Greater Yellowstone Network

Understory Vegetation

Understory vegetation differs according to precipitation, forest type, and substrate. Lodgepole pine forest is often characterized by a very sparse understory of mostly elk sedge (*Carex geyeri*) or grouse whortleberry (*Vaccinium scoparium*). Pinegrass (*Calamagrostis rubescens*) occurs frequently under Douglas-fir forest but is also common under other forest types, especially where the soil is better developed or more moist. In some areas of the park, such as Bechler and around the edges of the northern range, a more obviously developed shrub layer is composed of species such as Utah honeysuckle (*Lonicera utahensis*), snowberry (*Symphoricarpos* spp.), and buffaloberry (*Shepherdia canadensis*).

Forest Insect Pests

Coniferous trees of Yellowstone currently face one fungal and five insect threats. The fungus is a nonnative species while the insects are native to this ecosystem. Both fungus and insects have been present and active in cycles, probably for centuries. A scientist studying lake cores from the park has found insect remains in core samples, indicating their existence even millions of years ago. However, in the last 10 years, all five insects have been extremely active as a result of climate change.

The primary cause of tree mortality in Yellowstone is native bark beetles. Beetles damage trees in similar ways: their larvae and adults consume the inner bark.

If the tree is girdled, it dies. Their feeding activity can girdle a tree in one summer, turning the crown red by the following summer. The needles usually drop within the next year, leaving a standing dead tree (snag). Scattered throughout the park, isolated pockets of red-needled trees lend testament to past and present beetle activity.

Pest Activity

The severity of insect-caused tree mortality has been considerable throughout the West for over a decade. These damaging insects have spread to previously unaffected plant communities. Several native bark beetle species in the Scolytidae family have altered extensive areas within the Greater Yellowstone. Forest structure, tree health, and climate are the major factors in determining whether an outbreak expands; drought and warmer temperatures can make forests more vulnerable to infestation.

Although activity by both Douglas-fir beetle and Engelmann spruce beetle has declined to endemic (natural to Yellowstone) levels since 2000, other forest insects of ecological significance remain active. Mountain pine beetle activity was largely confined to the northwest portion of the park, in high-elevation whitebark pine and lower-elevation lodgepole pine, peaking in 2009 with annual decreases in mortality since. Defoliation of Douglas-fir and Engelmann spruce by the western spruce budworm is present in the park throughout the lower Lamar and along the

Forest Insect Pests

Number in Yellowstone

Five forest pests and one forest pathogen.

Mountain Pine Beetle

(*Dendroctonus ponderosae*)

- Affects whitebark, lodgepole, and limber pine.
- The tree defends itself by increasing resin (pitch) production, which can “pitch out” the insect from the tree and seal the entrance to others.
- Look for globs of resin, often mixed with wood borings, on the bark.
- Adults emerge in mid-summer.

Engelmann Spruce Beetle

(*Dendroctonus rufipennis*)

- Affects Englemann spruce, rarely lodgepole pine.

- Larvae feed for two years.
- Look for reddish dust on the bark and at the base of the tree in early summer.

Douglas-Fir Beetle (*Dendroctonus pseudotsugae*)

- Affects Douglas-fir.
- Larvae also consume outer bark.

Western Balsam Bark Beetle (*Dryocoetes confusus*)

- Affects subalpine fir.

Western Spruce Budworm (*Choristoneura occidentalis*)

- Affects Douglas-fir, true firs, spruce.
- Larvae defoliate trees and can destroy cones and seeds.
- Look for clumps of chewed needles

on branch tips.

White Pine Blister Rust

- A nonnative disease caused by the fungus *Cronartium ribicola*.
- Affects whitebark and limber pines.
- The disease affects the tree’s ability to transport nutrients and produce cones, and may eventually kill the tree.
- Look for cankers on the bark.

Management Issues

- Research will investigate the interactions between insect infestations and wildfire.
- Participate in a national strategy to conserve whitebark pine.

Yellowstone and Lamar river valleys. However, in recent years, budworm infestation and damage have decreased. These trends continued in 2011 when the park was partially surveyed.

Future of Insect Outbreaks in Yellowstone

Landscape-scale drought and the availability of suitable host trees have contributed to insect outbreaks. Healthy trees can defend themselves from beetle attack by “pitching out” adult females as they try to bore into the tree. Extreme winter temperatures can kill off overwintering broods, and cooler, wet summer weather impedes the insects from invading additional trees. Insect activity also decreases as the larger and more susceptible trees are killed off. Spruce beetles have likely declined as a result of insufficient preferred food sources (spruce trees more than 10 inches in diameter).

Recent and ongoing studies supported by the National Park Service are investigating the interaction between insect infestations and wildfire. Researchers have focused on how bark beetle epidemics may affect fire behavior in lodgepole-dominated forests and are comparing the resulting fire hazard with that in Douglas-fir forests.

More Information

- Amman, G.D. and K.C. Ryan. 1991. Insect infestation of fire-injured trees in the Greater Yellowstone Area, Edited by US Department of Agriculture, Forest Service, Intermountain Research Station.
- Christof, B., D. Kulakowski, and T.T. Veblen. 2005. Multiple disturbance interactions and drought influence fire severity in Rocky Mountain subalpine forests. *Ecology* 86(11):3018–3029.
- Despain, D.G. 1990. *Yellowstone vegetation: Consequences of environment and history in a natural setting*. Boulder, CO: Roberts Rinehart Publishing Company.
- Fleming, R.A., J.-N. Candau, and R.S. McAlpine. 2002. Landscape-scale analysis of interactions between insect defoliation and forest fire in central Canada. *Climatic Change* 55(1–2):251–272.
- Furniss, M. M. and R. Renkin. 2003. Forest entomology in Yellowstone National Park, 1923–1957: A time of discovery and learning to let live. *American Entomologist* 49(4):198–209.
- Hagle, S.K. et al. 2003. A Field Guide to Diseases and Insects of Northern and Central Rocky Mountain Conifers. U.S. Forest Service Report R1-03-08.
- Hicke, J.A. et al. 2006. Changing temperatures influence suitability for modeled mountain pine beetle outbreaks in the western United States. *Journal of Geophysical Research* 111:G02019.
- Johnson, P.C. and R.E. Denton. 1975. Outbreaks of the western spruce budworm in the American northern Rocky Mountain area from 1922 through 1971, Edited by US Department of Agriculture, Forest Service, Intermountain Forest and Range Experimentation Station. Ogden, UT.
- Logan, J.A. et al. 2003. Assessing the impacts of global warming on forest pest dynamics. *Frontiers in Ecology and the Environment* 1:130–137.
- Lynch, H., R. Renkin, R. Crabtree, and P. Moorcroft. 2006. The influence of previous mountain pine beetle (*Dendroctonus ponderosae*) activity on the 1988 Yellowstone fires. *Ecosystems* 9(8):1318–1327.
- McCullough, D.G., R.A. Werner, and D. Neumann. 1998. Fire and insects in northern and boreal forest ecosystems of North America. *Annual Review of Entomology* 43(1):107–127.
- Pauchard, A. and P. Alaback. 2006. Edge types defines alien species invasions along *P. contorta* burned, highway and clearcut forest edges. *Forest Ecology and Management* 223: 327–335.
- Renkin, R.A. and D.G. Despain. 1992. Fuel moisture, forest type, and lightning-caused fire in Yellowstone National Park. *Canadian Journal of Forest Research* 22(1):37–45.
- Ryan, K.C. and G.D. Amman. 1994. Interactions between fire-injured trees and insects in the Greater Yellowstone Area. In D. G. Despain, ed., *Plants and their environments: Proceedings of the first Biennial Scientific Conference on the Greater Yellowstone Ecosystem*, 259–271. Yellowstone National Park, WY: US Department of the Interior, National Park Service, Rocky Mountain Region, Yellowstone National Park.
- Schmid, J.M. and G.D. Amman. 1992. *Dendroctonus* beetles and old-growth forests in the Rockies. In M.R. Kaufmann, W.H. Moir and R.L. Bassett, ed., *Old-growth forests in the Southwest and Rocky Mountain regions, proceedings of a workshop*, 51–59. Portal, AZ: USDA Forest Service, Rocky Mountain Forest and Range Experimentation Station.
- Schoennagel, T., T.T. Veblen, and W.H. Romme. 2004. The interaction of fire, fuels, and climate across Rocky Mountain forests. *BioScience* 54(7):661–676.
- Simard, M. et. al. 2011. Do mountain pine beetle outbreaks change the probability of active crown fire in lodgepole pine forests? *Ecological Monographs* 81(1): 3–24.
- Veblen, T. T., K. S. Hadley, E. M. Nel, T. Kitzberger, R. Marion, and R. Villalba. 1994. Disturbance regime and disturbance interactions in a Rocky Mountain subalpine forest. *Journal of Ecology* 82(1):125–135.

Staff Reviewer

Erin Shanahan, Ecologist, Greater Yellowstone Network
Kristin Legg, Program Manager, Greater Yellowstone Network



Other vegetation communities in Yellowstone include sagebrush-steppe, wetlands, and hydrothermal communities. Sagebrush-steppe occurs in the northern range in Yellowstone.

Other Vegetation Communities

Sagebrush-steppe

This vegetation type occurs in the northern range; in Hayden, Pelican, and Madison valleys; on Swan Lake Flats; and along many of the rivers and creeks. Mountain big sagebrush (*Artemisia tridentata* var. *vaseyana*) dominates, along with several other kinds of sagebrush. Several grass species, such as Idaho fescue (*Festuca idahoensis*), also dominate sagebrush-steppe. Other species found in sagebrush-steppe include mountain brome, needlegrasses, yampah, sticky geranium, and several species of upland sedges. The northern range can be spectacular with wildflowers in late June and early July.

In 2015, a long-term sagebrush-steppe monitoring program was initiated to track the changes in plant cover and species composition over many years with an emphasis on invasive species. Data loggers will be used to assist staff with correlating any changes in the vegetation with climate change.

Wetlands

Yellowstone's wetlands include lakes, rivers, ponds, streams, seeps, spring mounds, marshes, fens, wet meadows, forested wetlands, and hydrothermal pools. They occupy more than 357 square miles (924 km²): 44% are lakes and ponds larger than 20 acres or having water deeper than 6.6 feet at low water; 4% rivers and streams; and 52% shallow water systems that dry up most years. Roughly 38% of the park's plant species—including half of the rare plants—are associated with wetlands, and 11% grow only in wetlands. Each type of wetland has a different suite of plants. Wetland flora put on a nice bloom, are widely distributed, and from June to September include the park's wildflower, fringed gentian (*Gentianopsis thermalis*). Wetlands in the park harbor much of the park's sedge biodiversity with 57 of the park's 82 sedge species known to occur in wetlands. Wetlands provide essential habitat for Yellowstone's rare plants, thermal species, reptiles, and amphibians; and for numerous insects, birds, and fish.

Wetlands

Where to See

Some wetlands located near roads:

- **Northeast Entrance Road**, beginning east of Yellowstone Picnic Area: look for sandhill cranes and ducks in the glacial ponds throughout the Lamar Valley.
- **Firehole Lake Drive**: listen for frogs and look for elephant's head flowers in hydrothermal wetlands where the road begins.
- **Dunraven Pass area**: look for abundant wildflowers in high-elevation seep wetlands near the road.
- **Norris Geyser Basin**, Back Basin: near Puff 'n' Stuff Geyser, look for dragonflies.
- **All thermal areas**: look for seaside arrow grass, and warm springs spike-rush, ephydrid flies, thermophiles, and other life forms.

Hydrothermal Communities

Yellowstone is the best place in the world to see hydrothermal phenomena such as geysers and hot springs. Fascinating and unique plant communities have developed in the expanses of thermally heated ground. Many of the species that occur in the geyser basins are actually species that tolerate tremendously different conditions and thus grow all over the western United States. Other species, however, are typical of the central Rockies or are regional endemics.

Hydrothermal plant communities demonstrate in very short periods of time that change is fundamental in any natural system. In a few days, the ground can heat up, perhaps triggered by an earthquake, and kill plants, while an adjacent area may cool, allowing plants to invade a previously inhospitable place.



NPS/D. RENKIN

Fringed gentian (*Gentianopsis detonsa*), the park wildflower. The appearance of wildflowers announces spring in the park. Enjoy the wildflowers, but don't pick them.

Wildflowers

Wildflowers such as lupine (*Lupinus argenteus*) and arnica (*Arnica cordifolia*) often grow under the forest canopy, but the most conspicuous wildflower displays occur in open meadows and sagebrush-steppe. The appearance of springbeauties (*Claytonia lanceolata*), glacier lilies (*Erythronium grandiflorum*), and steer's head (*Dicentra uniflora*) announce spring in the park. Soon colors splash the slopes, especially on the northern range—yellow from arrowleaf balsamroot (*Balsamorhiza sagittata*), white from phlox (*Phlox multiflora*), reds and oranges from paintbrush (*Castilleja*), and blue from penstemon (*Penstemon montanus*) and lupine. Goldenrod (*Solidago multiradiata*) and purple asters indicate the coming of fall.

Finding Flowers

Elevation, relative temperatures, soil types, and precipitation patterns all play a role in what you find blooming in various areas at different times of the year. In addition, far-reaching events such as fires can cause spectacular blooms of species that thrive on the conditions these events create.

Remember that many of Yellowstone's wildflowers are also very important parts of animal diets. The bulbs of springbeauty and glacier lily, for example, are vital spring foods of the grizzly bear. Wild strawberries are collected by ground squirrels and chipmunks; the seeds of most wildflowers are used by birds and insects. Even the petals of many flowers are eaten by animals. Bees and other insects collect nectar and pollen.

Invasive Species

Exotic plants—escaped domestics and “weeds”—can be found in Yellowstone. Look for them in disturbed sites such as roadsides where they have little initial competition and frequent redistribution. Dalmatian toadflax (*Linaria dalmatica*), yellow sweetclover (*Melilotus officinalis*), ox-eye daisy (*Leucanthemum vulgare*), and other exotics compete with native plants. For this reason, and for the continued integrity of the Yellowstone ecosystem, these exotics are controlled. Currently 229 nonnative species have been documented in the park. Of those, nine are native to North America and not native to Yellowstone.



Dalmatian toadflax (*Linaria dalmatica*) is an invasive species common along trails and roads. Improper removal techniques can actually spread infestations further.

More Information

Occasional wildflower sightings are posted on <http://www.nps.gov/yell/learn/nature/wildflowers.htm> and <https://www.facebook.com/YellowstoneNPS>

Staff Reviewer

Heidi Anderson, Botanist and Wetland Ecologist



Yellowstone is home to three endemic plant species, or species that occur only in Yellowstone and nowhere else in the world. Yellowstone sand verberna, shown here, is only found along the shore of Yellowstone Lake.

Rare Plants

The Greater Yellowstone region has few endemic plant species, or species that occur only in Yellowstone and nowhere else in the world. Endemic species occur in unusual or specialized habitats such as hydrothermal areas. Within Yellowstone, only three endemic species occur: Ross's bentgrass (*Agrostis rossiae*), Yellowstone sand verberna (*Abronia ammophila*), and Yellowstone sulfur wild buckwheat (*Eriogonum umbellatum* var. *cladophorum*).

Several other unusual species live in the Greater Yellowstone Area: warm springs spike rush, which grows in warm water; and Tweedy's rush, sometimes the only vascular plant growing in acidic hydrothermal areas.

Ross's Bentgrass (*Agrostis rossiae*)

Yellowstone's geothermally influenced plant communities contain species that must be able to tolerate a wide range of conditions. Although most of these species are widespread in range and occur at diverse elevations, not all of them are common. A unique grass of the geyser basins is Ross's bentgrass. This species is highly restricted in range. It grows in "vapor dominated" sites in the thermal areas, such as crack systems, the walls of thermal springs, or geothermally influenced depressions. Together, the widespread species and the local endemic form an interesting plant community in geothermal areas.

Distribution

Ross's bentgrass grows only in the geyser basins in the Firehole River drainage and at Shoshone Geyser Basin. Even within the thermal areas of Yellowstone's geyser basins, the right conditions to support Ross's bentgrass are rare and highly scattered. Thermal habitats are distinguished primarily by their elevated soil temperatures, and heat stress is the primary

factor controlling the distribution of plants within them. This species seems to require locations providing the right combination of moisture and warmth that create a natural greenhouse. As a result, this grass is one of the first plants to green up in warm pockets of geyserite—sometimes as early as January.

In the right conditions, Ross's bentgrass can grow profusely, sometimes with several hundred plants in a very small area. Although Ross's bentgrass is considered a poor disperser of seed, this trait may be adapted to thermal habitats that tend to be small and scattered. A seed bank in the thermal area may be more advantageous to a thermal species than dispersing seed into habitat where the plant is unlikely to survive. Most of the known sites of Ross's bentgrass, fewer than 12 acres of occupied habitat in total, have been mapped using the Global Positioning System (GPS).

Life History

Because the seeds of Ross's bentgrass germinate from December to January, the plants are a conspicuous green presence in the thermal areas by late winter. Flowers are produced in May and early June when the plants reach their maximum size of 1.5–7.8 inches (4–20 cm), after which they dry out and die as the soil temperature rises. Flowers may be present in February and March, but the plants typically do not produce viable seed that early. Full bloom occurs in late May and early June. As soon as temperatures rise in the early summer, the plants dry out due to the sun's heat from above and the thermal heat from below. Ross's bentgrass is already dead and hard to find by July.

Life in Thermal Areas

Although the temperature an inch beneath Ross's bentgrass can be 100°F, it does not appear to be



Ross's bentgrass is native to the geyser basins along the Firehole River.

especially heat tolerant. It survives only in thermal areas because their lethal summer temperatures impose a short growing season advantageous to annual plants with precocious flowering and prevent competition from slower growing perennials.

Any plant growing in thermal areas must be able to deal with constant change. A successful plant in the geyser basins must be able to shift location relatively easily, because one major thermal change, or several smaller changes, could eradicate the entire population. Apparently, Ross's bentgrass deals with this problem efficiently. Its seed-dispersal mechanism probably includes traveling on the muddy hooves of bison and elk who inhabit thermal areas during the winter. Nonnative species, such as cheatgrass, pose the only known threat; as they spread in thermal areas, they eventually may out-compete Ross's bentgrass.

Research

Recent genetic research indicates that another *Agrostis* found in thermal areas, which was previously considered the same species as the perennial *A. scabra* (ticklegrass), is actually an annual more closely related to *A. rossiae* as well as to *A. scabra* var. *geminata* in Lassen Volcanic National Park and *A. pauszhetica* from the Kamchatka Peninsula of Russia. The thermal *Agrostis* complex needs to be more closely investigated to determine the taxonomy and correct scientific name for this other annual bentgrass in Yellowstone's thermal areas.

Sometimes both of the thermal *Agrostis* occur in the same area, but generally they do not grow directly

adjacent to each other. While Ross's bentgrass occurs only along the Firehole River drainage and Shoshone Geyser Basin, the other *Agrostis* is commonly encountered at thermal areas throughout the park. Both *Agrostis* are typically surrounded on cooler ground by non-thermal ticklegrass, which is common in the park interior and reproductively isolated from the thermal plants by its later flowering time.

The primary threat to Ross's bentgrass is fast-growing, invasive annual species such as cheatgrass, bluegrass, and chickweeds. These species are restricting the presence of *A. rossiae* at several locations in the Upper Geyser Basin.

More Information

- Tercek, M.T., D.P. Hauber, and S.P. Darwin. 2003. Genetic and historical relationships among geothermally adapted *Agrostis* ("Bentgrass") of North America and Kamchatka: Evidence for a previously unrecognized, thermally adapted taxon. *American Journal of Botany* 90(9):1306–1312.
- Tercek, M.T. and J.L. Whitbeck. 2004. Heat avoidance life history controls the distribution of geothermal *Agrostis* in Yellowstone National Park. *Ecology* 85(7):1955–1966.



Yellow Monkeyflower

Unlike Ross's bentgrass, the yellow monkeyflower (*Mimulus guttatus*, also known as *Erythranthe guttata*) occurs abundantly throughout western North America. However, like bentgrass, some monkeyflowers are specialized to thrive in the extreme habitats created by hydrothermal activity. In thermal areas in Yellowstone, monkeyflowers exhibit an annual life cycle, germinating during Fall, growing throughout the winter, and flowering as early as March and April to set seed before they are killed by the hot and dry soils of summer. In contrast, monkeyflowers in nonthermal habitats in the park (e.g., riversides and bogs) are long-lived perennials that only flower in the summer and spend most of the year under snow. Remarkably, these two types occur within meters of each other within the park and are in the early stages of speciation.

Yellowstone Sand Verbena (*Abronia ammophila*)

Yellowstone sand verbena occurs along the shore of Yellowstone Lake. Taxonomists debate the relationship of this population to other sand verbenas. It may be distinct at the subspecific level and is certainly reproductively isolated from the closest populations in the Bighorn Basin of Wyoming east of the park.

The presence of a sand verbena at 7,700 feet elevation in the northern Rockies is unexpected, as most members of this North American genus occur in the warmer climates of the Southwest and Pacific Coast. One speculation by botanists is that the warmth provided by the geothermal activity in the area enabled a genus which had evolved in a warmer climate to gradually adapt to conditions in Yellowstone. Today, Yellowstone sand verbena tolerates long, cold winters and uses the brief summer to bloom and reproduce.

Distribution

The entire occupied habitat of Yellowstone sand verbena plants is 1.48 acres. Herbarium specimens of Yellowstone sand verbena indicate that the species was previously more widely distributed along the lake shore. These early collections provide evidence that Yellowstone sand verbena has been extirpated at several sites (including near Fishing Bridge museum and the Lake Hotel) since 1900. In the past 30 years, an additional site has been extirpated, suggesting that as much as half of the population has been lost, probably due to trampling.

In 1998, about 8,326 plants were documented along the lake shore. The previous two years had been very wet, resulting in a high level of recruitment with many young plants, some of which would probably not survive drier conditions. In 2023, the population was estimated at 2,703 plants. Possible reasons for this decrease include natural fluctuations in population size, cumulative effects of many years of drought, and increased thermal activity. Other potential threats include trampling by humans and invasion by nonnative plants, particularly cheatgrass (*Bromus tectorum*).

Current work

In 2019, NPS began treating cheatgrass (manually and chemically) around the North Shore populations. Bumper logs were installed to discourage off-trail travel in 2021 and educational signs about protecting plant species have also been installed.

In 2021, NPS began working with a researcher



Yellowstone sand verbena in the park is isolated from other populations.

to begin restoration of Yellowstone sand verbena at Pelican Point. Seed was collected from the North Shore population and grown in a greenhouse. Ninety-six individuals were planted in 2021 and 143 in 2022; 311 individuals were observed in 2023 and 149 in 2024.

Life History

The Yellowstone sand verbena grows close to the sand, rarely rising more than three inches from the surface. Some individuals occur near warm ground, so the thermal activity in Yellowstone may be helping this species survive. The foliage is sticky, which defends against herbivorous insects. White flowers bloom from mid-June until a killing frost.

Although the species was once thought to be an annual, it has a significant taproot that in mature plants extends at least several feet deep. Sand verbenas as a group are known to be sensitive to disturbance, suggesting that increased activity on the lake shore may have contributed to the species's decline as the result of wildlife and humans walking across the area. An area adjacent to Storm Point Trail has been closed to off-trail travel to protect the species.

Research has shown that the plants are capable of self-pollination as well as out-crossing using insect pollinators. Self-pollination may sustain Yellowstone sand verbena in the absence of pollinators, but it may lead to inbreeding depression. Many types of insects visit the flowers, but pollination occurs primarily from moths and bumblebees. Insect visitation is sporadic and adversely impacted by precipitation and turbulent winds. Genetic exchange among the sites is unlikely due to the significant distance between them and the low numbers at three of the sites. The

location of nearly all of the plants on the lake's north shore places the species at risk of extinction due to random events affecting the population.

More Information

- Saunders, N.E. and S.D. Sipes. 2006. Reproductive biology and pollination ecology of the rare Yellowstone Park endemic *Abronia ammophila* (Nyctaginaceae). *Plant Species Biology* 21:75–84.
- Whipple, J.J. 2002. Yellowstone sand verbenas (*Abronia ammophila*): A Yellowstone Lake endemic. In R.J. Anderson and D. Harmon, ed., *Yellowstone Lake: Hotbed of chaos or reservoir of resilience?: Proceedings of the 6th Biennial Scientific Conference on the Greater Yellowstone Ecosystem*, 256–268. Yellowstone National Park, WY: Yellowstone Center for Resources and The George Wright Society.
- LoPresti, E.R. and Karbin, R. 2016. Chewing sandpaper: grit, plant apparancy and plant defense in sand-entrapping plants. *Ecology* 97(4):826–833.
- LoPresti, E.R. et al. 2018. Entrapped sand as a plant defense: effects on herbivore performance and preference. *Ecological Entomology* 43:154–161.

Yellowstone Sulphur Flower

(*Eriogonum umbellatum* var. *cladophorum*)

Approximately 250 species of wild buckwheat are found in the world, with most of the species occurring in arid regions of the western United States. The group has undergone rapid evolution, leading to numerous closely related taxa. The sulfur buckwheats (*Eriogonum umbellatum*), of which there are 41 recognized varieties in the West, exemplify this rapid speciation. Several varieties of sulfur buckwheat live in the park, but the variety endemic to the park, Yellowstone sulphur flower, is found only in the Firehole River drainage.

Description

Yellowstone sulphur flower has bright yellow flowers and very hairy, somewhat gray looking leaves, distinguishing it from the more common varieties. The other bright yellow buckwheat in the area, Piper's wild buckwheat (*Eriogonum flavum* var. *piperi*), blooms early in the summer, well before Yellowstone sulphur flower, and on close examination the flowers are hairy on the exterior.

The close relative of Yellowstone sulphur flower has creamy yellow flowers without hairs, greenish leaves, and blooms before Yellowstone sulphur flower. Even though these two taxa are considered members of the same species, there has been no sign of interbreeding or hybridization. Growing on mildly geothermally influenced ground, this plant

community includes several species that are more commonly encountered at lower elevations or as components of the Great Basin flora. Superficially, these areas in the vicinity of the park's geyser basins look relatively barren, but the plant species representing different areas of the West form a unique plant community that can be found nowhere else.

Distribution

Yellowstone sulphur flower is adapted to survive on barren, slightly geothermally influenced open areas. It apparently does not tolerate any shading, so it is a conspicuous component of relatively dry plant communities adjacent to the park's thermal areas. The geographic range of this variety is highly restricted, having been found only from the Upper, Midway, and Lower geyser basins to the vicinity of Madison Junction. Adaptation to life in a geothermal setting means that this taxon has to be able to move with changes in the geothermal system. Yellowstone sulfur buckwheat is capable of recolonizing disturbed areas, as demonstrated by its presence near the Old Faithful Inn and Visitor Education Center, and other locations in the Upper Geyser Basin.

More Information

- Whipple, J.J. 2012. Endemic plants of Yellowstone. *Yellowstone Science*. 20(1).
- Tercek, M.T., T.S. Al-Niemi, and R.G. Stout. 2008. Plants exposed to high levels of carbon dioxide in Yellowstone National Park: A glimpse into the future? *Yellowstone Science*. 16(1).
- Whipple, J. 2004. The YS interview: Park botanist Jennifer Whipple and Yellowstone's herbarium (interview) In *Yellowstone Science*. 12(4).

Staff Reviewer

Heidi Anderson, Botanist and Wetland Ecologist



Yellowstone sulphur flower wild buckwheat is only found in Yellowstone National Park.



Yellowstone works to prevent the spread of invasive plant species, which can displace native species, change vegetation communities, affect fire frequency, and impact food for wildlife.

Invasive Plants

Invasive nonnative plants can displace native plant species, including some endemic to the park's geothermal habitats, change the nature of vegetation communities and affect fire frequency and the distribution, foraging activity, and abundance of wildlife. These changes can profoundly affect the entire ecosystem. For example, nonnatives that are unpalatable to wildlife may replace preferred native plants, leading to changes in grazing activity. In turn, this stresses plants not adapted to grazing.

Invasive plants have altered views of the park's cultural landscapes and historic districts. Seeds may be spread by people and their vehicles, wild and domestic animals, and sand and gravel used for construction and maintenance work. The most

vulnerable areas have been disturbed by human use: along the roads, trails, and rivers—though they are spreading from developed areas to the backcountry. Restoring native plants in an area that has become infested is extremely difficult.

In addition to about 1,491 native plant taxa, 229 nonnative species have been documented in the park through ongoing survey efforts. Not all of these nonnative species are still present in the park, but most of them are.

Managing Invasive Plants

Controlling all the invasive plants—some well-established—is unrealistic. Staff prioritize treatments based on the threat they pose to native plant communities and the likelihood for successful control.

Quick Facts

Number in Yellowstone
229 species

Canada Thistle (*Cirsium arvense*)

- Throughout the park and adjacent national forests.
- Airborne seeds enable it to spread widely throughout the park, invading wetlands. Forms dense monocultures, thus radically changing an area by forcing out native vegetation.

Dalmatian Toadflax (*Linaria dalmatica*)

- Northern portions of the park, especially around Mammoth.
- Highly invasive, replaces native plants.

Houndstongue (*Cynoglossum officinale*)

- Primarily found in Mammoth and at the East Entrance.

- May have been introduced by contaminated hay used by both the National Park Service and concessioners in their horse operations.
- Seeds easily attach to the coats of animals, and thus spread along animal corridors.
- Highly invasive.

Leafy Spurge (*Euphorbia esula*)

- Small patches in Bechler and along roadsides, so far being successfully controlled but spreading actively in Paradise Valley north of the park and outside Bechler on the Caribou-Targhee National Forest.
- Becomes a monoculture.
- Extremely hard to control because of deep underground stems (up to 30 feet) and dense vegetation.

Ox-eye Daisy (*Leucanthemum vulgare*)

- Mammoth and Madison areas.
- Can become dominant in meadows, is unpalatable to elk and other wildlife.
- Control efforts have substantially curtailed infestation; monitoring and evaluation continue.

Spotted Knapweed (*Centaurea maculosa*)

- Along roadsides and in the vicinity of Mammoth.
- Aggressive species that, once established, forms a monoculture.
- Aggressive control efforts underway to prevent a catastrophic change in park vegetation.

Management Issues

Resource managers target the most invasive species for control or removal.

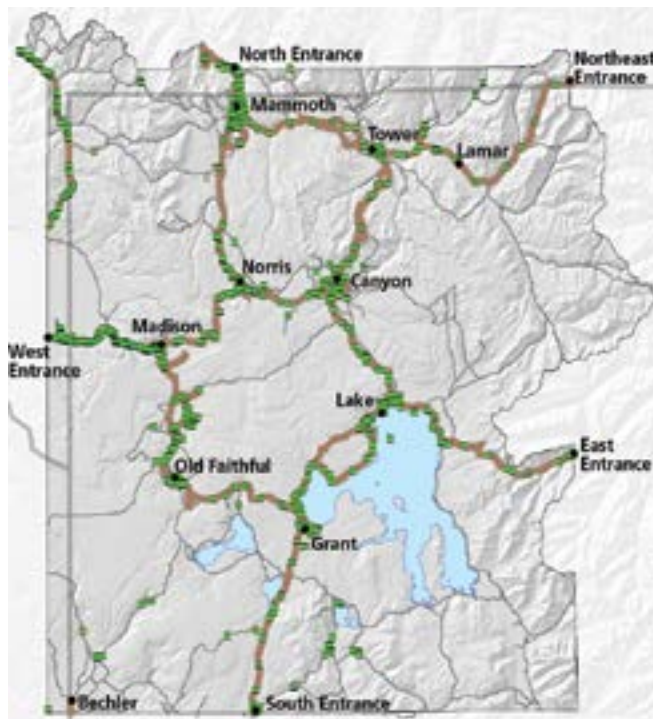
Words to Know

Native species have occurred, now occur, or may occur in a given area as a result of natural processes. Native plants evolve within their own ecological niche in concert with other native plants.

Nonnative species (also known as exotic, foreign, non-indigenous, alien, or weeds) live outside their natural range and arrived there by human activity, either deliberate or accidental. Nonnative species typically have few biological controls to keep their populations in check.

Invasive species have the potential to thrive and spread aggressively outside their natural range, and can include native species. A naturally aggressive plant may be especially invasive when it is introduced into a new habitat. An invasive species that colonizes a new area often has an ecological advantage because the insects, diseases, and foraging animals that naturally keep its growth in check in its native range are not present in its new habitat. An invasive plant that sustains itself outside cultivation is considered naturalized and has not “become” native.

Some infestations can be eradicated if the species is treated when the outbreak is still small; other species, such as spotted knapweed (*Centaurea maculosa*), are so common that stopping them from spreading is the primary goal. This strategy has helped prevent high-priority invasive species from moving into wilderness areas where control is more difficult.



A total of 120 acres (green circles) of invasive plants were treated in 2015. Most treatment areas are along roadways and in developed areas, though trails and some backcountry areas were also treated.

Nonnative vegetation was found occurring on 18,440 acres inventoried in 2022. Sometimes exotic plants are found in pure populations with few native plants, but are most often mixed within native plant

Keep Invasive Plants Out of Yellowstone National Park

- Don't transport them. Be diligent at removing debris (especially seeds) and mud from boots, gear, pets and your vehicle after recreational activities.
- Report "suspicious" looking plants to the park botanist. To report a plant, just take a photo and note the location (coordinates such as UTMS are even better if you have access to a GPS unit). Please email photo and location to Heidi_Anderson@nps.gov. Our best hope of keeping a native flora intact is catching small populations before they expand.
- When removing seeds from clothing and pets dispose of them properly when you find them. If you are unfamiliar with a seed attached to your clothing wait until you're back at the trailhead to dispose of it; this can stop the spread of invasive plants into the backcountry.
- Use trailhead boot brushes when available to stop the spread of weeds. Yellowstone National Park installed eight trailhead boot brushes in 2019. This is a quick way to remove seeds possibly hiding on the bottom of your shoes and a good time to stop and inspect pets and clothing before venturing further down the trail.
- Stay on designated routes, roads, and trails when possible. New social trails help spread weeds to new locations.
- Park in designated pull offs or on a hardened surface whenever possible. Parking on the vegetation not only kills the existing plants but also introduces new weed species.
- If you are a frequent visitor to the park, please consider adopting a weed patch or helping collect native seed for restoration projects in the park by contacting the park botanist at Heidi_Anderson@nps.gov.
- Please photograph and observe the plants, but do not pick the flowers.

Together we can keep areas weed free and stop invasive plant species from disrupting native plant communities. Early detection can also be extremely helpful, so the more you know the more you can help.



Park managers sometimes restore disturbed areas infested by invasive nonnative plants to native vegetation. The area enclosed by this sturdy fence was an irrigated field; park managers are restoring native plants here.

communities. Based on program priorities for species, the equivalent of 103 acres of pure non-native plant populations was treated during 2022. Physical removal is the preferred method of control when feasible, but pulling or cutting of some of the perennial species serves to stimulate new growth, and the use of herbicides becomes necessary to control aggressive species over large areas. Manual pulling efforts in 2022 totaled three acres as these efforts were limited to small, isolated patches along road corridors and in bison brucellosis quarantine facilities. Most of the 36 species targeted for treatment are listed by the states of Idaho, Montana, or Wyoming as “noxious weeds,” which means they are detrimental to agriculture, fish and wildlife, aquatic navigation, or public health.

Preventing the Spread of Invasive Plants

Prevention efforts include control of construction materials entering the park, equipment inspections at park entrances, allowing only certified weed-free hay to be transported through the park, restricting the use of hay in the backcountry, and planting native species where ground disturbance has occurred.

To improve nonnative plant management throughout the region, park staff work with land managers from other government agencies, the Greater Yellowstone Coordinating Committee’s Weed Subcommittee, and the National Park Service’s Rocky Mountain Exotic Plant Management Team. The park uses Integrated Pest Management—chemical, biological, sociological, and mechanical methods—to control some of the nonnative plants. The park also cooperates with adjacent state and county Weed Control Boards to share knowledge and technology related to nonnative plant detection and control.

More Information

Sheley, R.L. and J.K. Petroff. 1999. *Biology and Management of Noxious Rangeland Weeds*. Corvallis: OSU Press.
Whitson, T.L. et al. 2002. *Weeds of the West*. Western Society of Weed Science. Jackson, WY/Grand Teton Lithography.

Staff Reviewer

Steven Bekedam, Supervisory Botanist

Restoring Native Plants

In 1932, President Hoover added more than 7,000 acres of land to Yellowstone National Park to provide low-elevation winter wildlife habitat near Gardiner, Montana. The addition included 700 acres of irrigated agricultural fields.

Park managers stopped irrigating the fields and planted a nonnative perennial grass, crested wheatgrass (*Agropyron cristatum*), that they hoped would tolerate the arid conditions and provide wildlife forage. It thrived for many decades but was never suitable forage. Eventually, another, more aggressive nonnative plant—an annual mustard, desert alyssum (*Alyssum desertorum*)—moved in. Alyssum germinates very early and uses up most of the soil moisture before other species even get started. It also exudes a chemical that inhibits soil bacteria needed by native plants.

Park managers are restoring native vegetation to this area, following recommendations of arid-land-restoration specialists. In 2008 and 2009, they fenced four pilot plots totaling 50 acres, where they are controlling nonnative plants with herbicides and growing cover crops to increase soil organic matter and moisture-holding capacity and to restore soil microbial communities. Since 2014, the areas within the fences, as well as some areas outside of the

fencing, have been drill and broadcast seeded with a mix of native grasses and forbs. Spot-spraying with herbicides in the seeded areas will continue to help the native species establish.

In 2022, the last section of restoration fencing was removed to allow wildlife to have access to all revegetated areas. Restoration of native plants will continue in the Gardiner Basin without the use of exclosure fencing. Future restoration efforts continue

to follow a “broadcast herbicide-plant native seed-spot treat with herbicide” method, and in 2022, approximately 35 additional acres were treated in this manner south of Rescue Creek along the northern boundary of Yellowstone National Park. Nearly 20 acres of Landslide Creek, initially treated in 2020, were also selectively herbicide-treated and reseeded from 2021–2022.