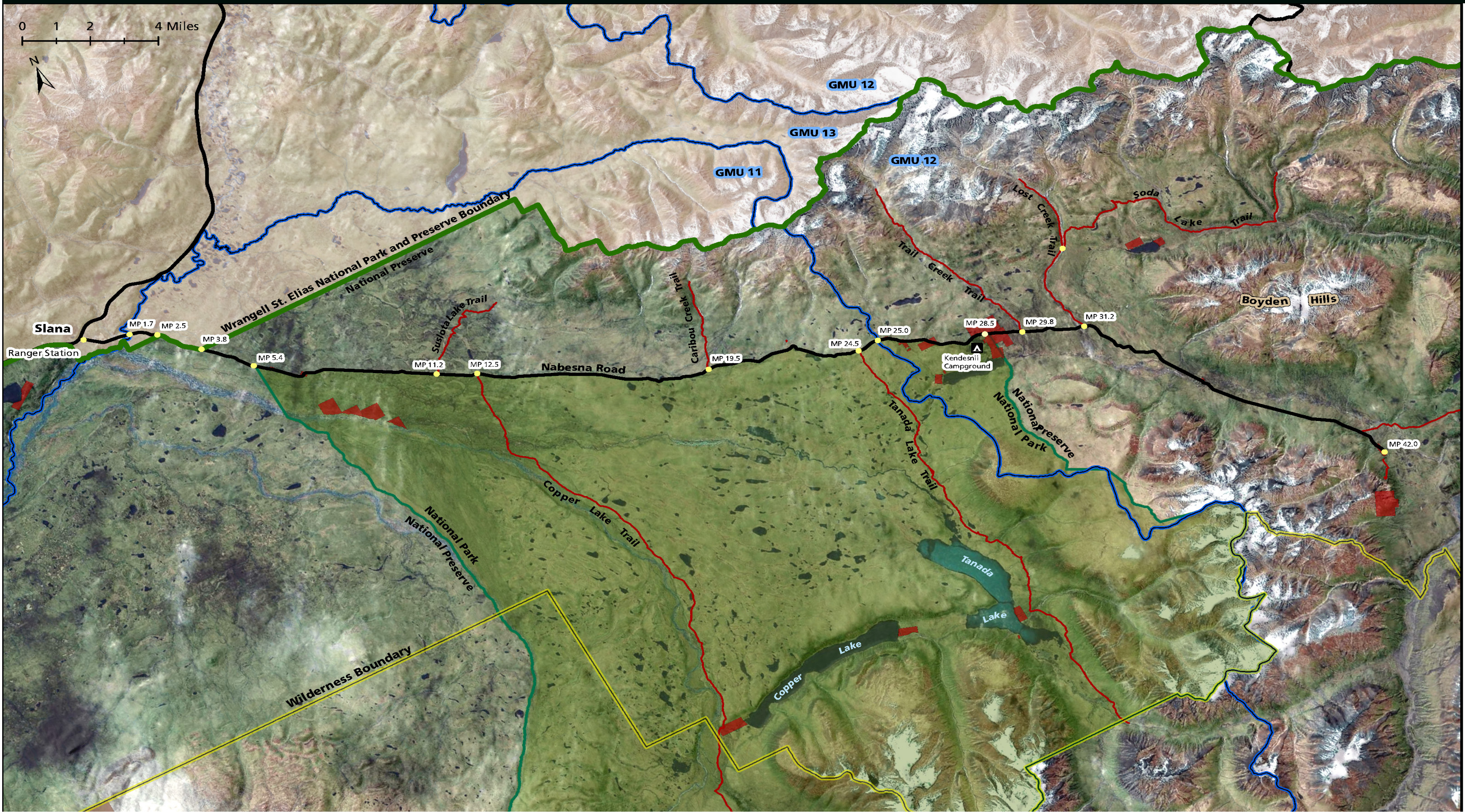


Nabesna Road Subsistence Map

Department of the Interior
National Park Service
Wrangell-St. Elias National Park and Preserve



Legend

- Wrangell St. Elias Boundary
- National Park
- National Preserve
- Game Management Unit
- Designated Wilderness
- Private Land
- Private - Regional Native Corporation
- Private - Village Native Corporation
- State
- University
- Road
- Trail
- Foot Trail

Nabesna Road Mileposts*

Mile 0.2 Slana Ranger Station.
Mile 1.7 Game Management Unit 11 boundary.
Mile 2.5 National Preserve boundary. The south side of the road forms the northern boundary of the Preserve for the next 1.3 miles.
Mile 3.8 Land on both sides of the road is Preserve.
Mile 5.4 National Park boundary. The south side of the road is Park and the north side of the road is Preserve.
Mile 25.0 Game Management Unit 12 boundary.
Mile 27.8 Kendesnii Campground
Mile 28.7 Preserve is on both sides of the road.
Mile 41.8 End of state maintenance of Nabesna Road.

*Mileposts are based on existing road markers. Mileage may vary slightly from vehicle to vehicle. Look for signs marking land status changes.