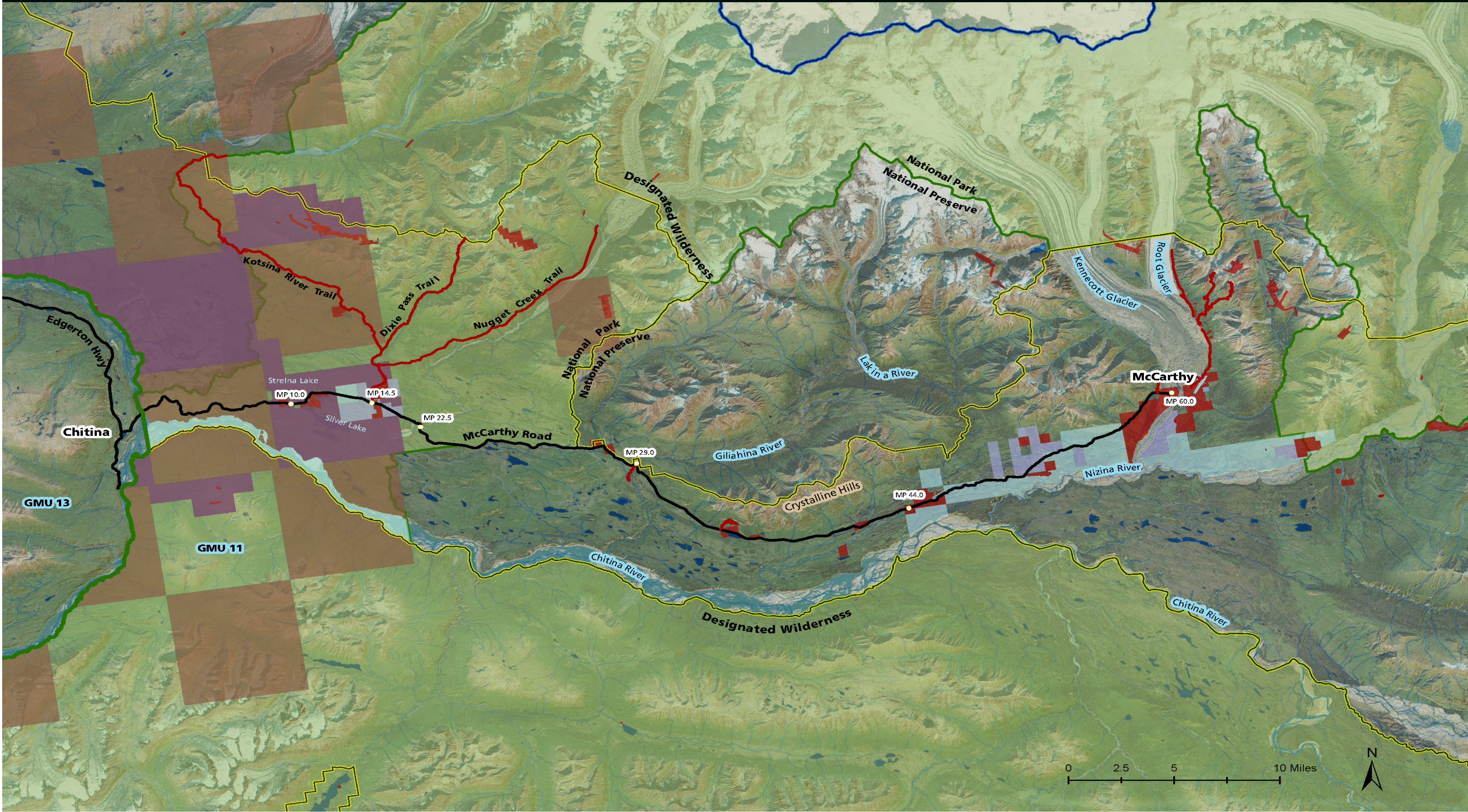


McCarthy Road Subsistence Map

Department of the Interior
National Park Service
Wrangell-St. Elias National Park and Preserve



Legend

- Wrangell St. Elias Boundary
- National Park
- National Preserve
- Game Management Unit
- Designated Wilderness
- Private Land
- Private - Regional Native Corporation
- Private - Village Native Corporation
- State
- University
- Road
- Trail
- Foot Trail

McCarthy Road Mileposts*

Mile 14.5 Access road on the north to back-country trails. Please respect private property by staying on the road.
Mile 15.8 Park on both sides of road for next 4 miles.
Mile 19.8 Park on north side of road. Preserve on south side of road.
Mile 25.5 Preserve on both sides of road.
Mile 43.9 Road crosses Lakina River.
Mile 60.0 Road ends at the Kennicott River.

Note: Much of the land adjacent to the McCarthy Road is private property, or owned by the University of Alaska or the State of Alaska. Please respect the rights of private property owners. *Mileposts are based on existing road markers. Mileage may vary slightly from vehicle to vehicle. Look for signs marking land status changes.