



National Park Service
U.S. Department of the Interior

Superintendent's Compendium
Of Designations, Closures, Permit
Requirements and Other
Restrictions Imposed Under
Discretionary Authority.

Whiskeytown National
Recreation Area

P.O. Box 188
14492 Kennedy Memorial Drive
Whiskeytown, CA 96095

(530) 242-3400 phone
(530) 246-5154 fax

Approved:

Josh Hoines, Superintendent

A. INTRODUCTION

1. Superintendent's Compendium Described

The Superintendent's Compendium is the summary of park specific rules implemented under 36 Code of Federal Regulations (36 CFR). It serves as public notice, identifies areas closed for public use, provides a list of activities requiring either a special use permit or reservation, and elaborates on public use and resource protection regulations pertaining specifically to the administration of the park. The Superintendent's Compendium does not repeat regulations found in 36 CFR and other United States Code and CFR Titles, which are enforced without further elaboration at the park level.

The regulations contained in 36 CFR, Parts 1-7, are the basic mechanism used by the National Park Service (NPS) to preserve and protect the natural and cultural resources of the park and to protect visitors and property within the park. Parts 1 through 6 are general regulations applicable to all areas of the National Park system, and Part 7 contains special regulations specific to individual parks. Each of these Parts has many sections and subsections articulating specific provisions. Within some of these Part 1-7 sections and subsections, the Superintendent is granted discretionary authority to develop local rules to be responsive to the needs of a specific park resource or activity, park plan, program, and/or special needs of the general public.

As an example, 36 CFR 1.5(a) *Closures and Public Use Limits* provides the Superintendent certain discretion in allowing or disallowing certain activities. The authority granted by the Section, however, requires the Superintendent to comply with the Administrative Procedures Act (6 USC Section 551), which requires public notice on actions with major impact on visitor use patterns, park resources or those that are highly controversial in nature.

Another example is 36 CFR 1.6 *Permits*, which allows the Superintendent to require a permit for certain uses and activities in the park. This Section, however, requires that a list of activities needing a permit (and a fee schedule for the various types of permits) be maintained by the park.

A final example is 36 CFR 2.1(c) (1) *Preservation of Natural, Cultural and Archeological Resources*, which provides the Superintendent the authority to designate certain fruits, nuts, berries or unoccupied seashells which may be gathered by hand for personal use or consumption. This activity can occur, however, only if a written determination shows that the allowed activity does not adversely affect park wildlife, the reproductive potential of a plant species, or otherwise adversely affect park resources.

This Compendium should be used in conjunction with Title 36 CFR, Parts 1-7, to more fully understand the regulations governing the use and enjoyment of all the areas of the national Park System.

[A copy of Title 36, CFR, can be purchased](http://www.gpo.gov) from the U.S. Government Printing Office at:
www.gpo.gov

OR

Superintendent of Documents
P.O. Box 371954
Pittsburgh, PA 15250-7954

[The CFR is also available](#) on the Internet.

2. Laws and Policies Allowing the Superintendent to Develop This Compendium

The National Park Service (NPS) is granted broad statutory authority under Title 54 United States Code (U.S.C.) §100101(a) (formerly 16 U.S.C. 1a-1, "Organic Act") to "....regulate the use of the National Park System by means and measures that conform to the fundamental purpose of the System units, which purpose is to conserve the scenery, natural and historic objects, and wild life in the System units and to provide for the enjoyment of the scenery, natural and historic objects, and wild life in such manner and by such means as will leave them unimpaired for the enjoyment of future generations." In addition, Title 54 U.S.C. §100751(a) allows the NPS, through the Secretary of the Interior, to "prescribe such regulations as the Secretary considers necessary or proper for the use and management of System units."

In 1970, Congress amended the NPS Organic Act to clarify its intentions as to the overall mission of the NPS. Through the General Authorities Act of 1970, Congress brought all areas administered by the NPS into one National Park System and directed the NPS to manage all areas under its administration consistent with the Organic Act of 1916.

In 1978, Congress amended the General Authorities Act of 1970 and reasserted System-wide the high standard of protection defined in the original Organic Act by stating "Congress further reaffirms, declares, and directs that the promotion and regulation of the various areas of the National Park System, as defined by Section 1 of this Title, shall be consistent with and founded in the purpose established by Section 1 of this Title, to the common benefit of all people of the United States."

In addition to the above statutory authority, the Superintendent is guided by established NPS policy as found in the *NPS Management Policies* (2006). The Superintendent is also guided by more specific policies promulgated by the Director, National Park Service, in the form of Director's Orders. As stated in the Management Policies, the primary responsibility of the NPS is to protect and preserve our national natural and cultural resources while providing for the enjoyment of these resources by visitor and other users, as long as use does not impair specific park resources or overall visitor experience. The appropriateness of any particular visitor use or recreational experience is resource-based and will vary from park to park; therefore, a use or activity that is appropriate in one park area may not be appropriate in another. The Superintendent is directed to analyze overall park use and determine if any particular use is appropriate. Where conflict arises between use and resource protection, where the Superintendent has a reasonable basis to believe a resource is or would become impaired, than that Superintendent is obliged to place limitations on public use.

3. Consistency of This Compendium with Applicable Federal Law and Requirements

The Superintendent's Compendium is not considered a significant rule requiring review by the Office of Management and Budget under Executive Order 12866. In addition, this Compendium will not have a significant economic effect on a number of small entities nor impose a significant cost on any local, state or tribal government or private organization, and therefore does not fall under the requirements of either the Regulatory Flexibility Act or the Unfunded Mandates Reform Act.

The actions and requirements described in this Compendium are found to be categorically excluded from further compliance with the procedural requirements of the National Environmental Policy Act (NEPA) in Department of the Interior (DOI) Guidelines 516 DM 6 and as such, an Environmental Assessment will not be prepared.

4. Development of the Requirements of the Superintendent's Compendium

As outlined above, the NPS has broad authority and responsibility to determine what types of uses and activities are appropriate in any particular National Park System area. The requirements of the Superintendent's Compendium are developed through an analysis and determination process. The decision criteria used during this process are:

- Is there use or activity consistent with the NPS Organic Act and NPS policy?
- Is the use or activity consistent and compatible with the park's enabling legislation, management objectives, and corresponding management plans?
- Will the use or activity damage the park's protected natural and cultural resources and other protected values?
- Will the use or activity disturb or be in conflict with wildlife, vegetation, and environmental protection actions and values?
- Will the use or activity conflict with or be incompatible with traditional park uses and activities?
- Will the use or activity compromise employee or public safety?

5. Applicability of the Compendium

The rules contained in this Compendium apply to all persons entering, using, visiting or otherwise present on Federally owned lands, including submerged lands, and waters administered by the NPS within the legislative boundaries of the park. This includes all waters subject to the jurisdiction of the United States, including all navigable waters.

6. Enforcement of Compendium Requirements

NPS Law Enforcement Park Rangers enforce the requirements of the United State Code, 36 CFR, and this Superintendent's Compendium.

7. Penalties for Not Adhering to the Compendium Requirements

A person who violates any provision of the regulations found in 36 CFR, Parts 1-7, or provisions of this Compendium, is subject to a fine as provided by law (18 U.S.C. 3571) up to \$5,000 for individuals and \$10,000 for organizations, or by imprisonment not exceeding six months (18 U.S.C. 3559), or both, and shall be adjudged to pay all court costs associated with any court proceedings. You may receive a list of fines associated with any particular provision by contacting the Chief Ranger at the park address found below.

8. Comments on the Compendium

The Compendium is reviewed annually and revised as necessary. The park welcomes comments about its program and activities at any time.

Written comments on the Compendium may be submitted to:

Superintendent
Whiskeytown National Recreation Area
P.O. Box 188
14492 Kennedy Memorial Drive
Whiskeytown, CA 96095

9. Effective Date of the Superintendent Compendium

The Superintendent's Compendium is effective on the approval date listed on the first page of this document and remains in effect until revised for a period up to one year.

10. Additional Information

Some of the terms used in this Compendium may have specific meaning defined in 36 CFR 1.4 *Definitions*.

11. Availability

Copies of the Compendium are available at Whiskeytown National Recreation Area 14492 Kennedy Memorial Drive Whiskeytown, CA 96095. It may also be found at <https://www.nps.gov/whis/learn/management/whiscompendium.htm>

B. SUPERINTENDENT'S COMPENDIUM

In accordance with regulations and the delegated authority provided in Title 36, Code of Federal Regulations ("36 CFR"), Chapter 1, Parts 1-7, authorized by Title 16 United States Code, Section 3, the following provisions apply to all lands and waters administered by the National Park Service, within the boundaries of the Whiskeytown Unit of the Whiskeytown-Shasta-Trinity National Recreation Area. Unless otherwise stated, these regulatory provisions apply in addition to the requirements contained in 36 CFR, Chapter 1, and Parts 1-7.

Written determinations, which explain the reasoning behind the Superintendent's use of discretionary authority, as required by Section 1.S(c), appear in this document identified by italicized print.

I. 36 CFR §1.5 - VISITING HOURS, PUBLIC USE LIMITS, CLOSURES, AND AREA DESIGNATIONS FOR SPECIFIC USE OR ACTIVITIES

(a)(1) The following visiting hours and public use limits are established for all or for the listed portions of the park, and the following closures are established for all or a portion of the park to all public use or to a certain use or activity:

Visiting Hours:

- Headquarters office building lobby is open from 8:00 A.M. to 4:30 P.M. Monday through Friday unless otherwise posted.
- Brandy Creek Beach day use area is open to vehicle traffic from 9:00 A.M. to 9:00 P.M. daily from April 1 through November 1 each year, unless the access gate is closed.
- Brandy Creek Marina day use area is open from 10:00 P.M. to 6:00 A.M. only to moorage customers on the concessions docks and persons launching, landing or retrieving from the water vessels at the launch ramp.

- Oak Bottom Recreation Complex (as defined on the attached map, Appendix A), between the hours of 10:00 P.M. and 6:00 A.M. is open only to registered campers in their campsites, moorage customers on the concessions docks and persons launching, landing, or retrieving from the water vessels at the launch ramp.

Public Use Limits:

- Portions of Whiskeytown Unit, as posted along a perimeter where penetrated by roads, trails and water access, pursuant to appropriate public notification, for purposes of enforcement of the Endangered Species Act, relating to critical habitat protection for listed species.
- Occupied vessels on Whiskeytown Lake, between the hours of 10:00 PM and 6:00 AM, cannot be anchored, beached, or secured in any way unless at a designated marina or vessel launch site. Failure to comply with this restriction is a violation of 36 CFR 7.91(b).
- Hunting is prohibited on the following land areas within Whiskeytown Unit, as defined and drawn onto a map (Appendix B), which is made a part of this document, on file and available for inspection in the office of the Superintendent. Refer to the maps for specific boundaries of areas impacted by these closures and restrictions.
 - In all cases, hunting (as defined under 36 C.F.R. 1.4 (a)) and/or discharge of any weapon within 150 yards of any structure, designated camping area or other developed recreation site is prohibited.
 - Vicinity of Carr Powerhouse: including but not limited to areas surrounding National Park Service and private housing, Carr Powerhouse, WAPA substation and abandoned sections of California Highway 299.
 - Vicinity of National Park Service housing area/office complex, water treatment facilities and access roads on or near Bull Gulch.
 - Vicinity of Oak Bottom Campground, Oak Bottom Channel and water treatment facilities and private housing on Grizzly Gulch.
 - Vicinity of Liberty Gulch, Whiskey Creek, Whiskeytown Store and the California 299 Bridge at Whiskey Creek Arm.
 - Vicinity of Dry Creek Campground; the Brandy Creek developed sites, National Park Service housing areas and water treatment facilities and their access roads.
 - Vicinity of Whiskeytown Dam, Western Area Power Administration substation, Clear Creek Water District facilities, "East Beach," Whiskeytown Headquarters, Overlook Visitor Center, and the Spring Creek Tunnel inlet.
 - Vicinity of the Whiskeytown Environmental School Camp, Peltier Bridge Campground and the area between Paige Bar Road, Mule Town Road, Salt Creek, and the Mount Shasta Mine Trail.
 - Exception to closure: Hunting of Band-tailed Pigeons is permitted between during the legal season as defined by California Department of Fish and Game within the area bounded by Paige Bar Road between the Mt. Shasta Mine Trail and the intersection of Whiskeytown Environmental School Camp Access Road, Whiskeytown Environmental School Camp Access Road from Paige Bar Road to the Clear Creek Bridge and Clear Creek between the Whiskeytown Environmental School Camp Access Road bridge and the mouth of Salt Creek on the West, Salt Creek between Mule Town Road and Clear Creek on the South, Mule Town Road Between the Mt. Shasta Mine Trail and Salt Creek on the East and the Mt. Shasta Mine Trail between Paige Bar and Mule Town Roads on the north.

- Areas within 150 yards of the Sheep Camp.
- Areas within 150 yards of the Peltier Valley campsites.
- Areas within 150 yards of the Brandy Creek #1 and #2 campsites.
- Areas within 150 yards of the Crystal Creek campsites.
- Areas within and adjacent to the Tower Historic District in the vicinity of Camden House, Tenant House, El Dorado Mine, and the Clear Creek Picnic Area north of California Highway 299.
- Areas within the developed property at the summit of Shasta Bally Mountain, for use as a tele-communications facility as identified on the attached map (Appendix B).
 - *The above hunting prohibitions are necessary for the safety of visitors and the protection of property and facilities. These closures are consistent with California Fish and Game Code 3004(a)*

Closures:

- National Park Service water treatment facility North of SR299W along Trinity Mountain Road.
 - *This closure is necessary to protect safe drinking water.*
- Tenant House historic structure and its curtilage.
 - *This closure is necessary for privacy of employee housing at the Tenant House.*
- The historic barn structure located south of the Camden House within the Tower House Historic District and the ground surrounding the structure for a distance of 100'.
 - *This closure is necessary to protect historic structure.*
- Judge Carr Powerhouse within the fenced enclosure.
 - *This closure is necessary to protect visitors from dangerous equipment and to protect power generating facilities.*
- The after bay of the Judge Carr Powerhouse, as marked by the buoy line and the shoreline markers to all activities except fishing from the banks.
 - *This closure is necessary to protect swimmers and boaters from power generating facilities.*
- Power substation east of the Judge Carr Powerhouse within the fenced enclosure.
 - *This closure is necessary to protect visitors from dangerous equipment and to protect power generating facilities.*
- The surge chamber area southeast of Judge Carr Powerhouse within the fenced enclosure.
 - *This closure is necessary to protect visitor from dangerous equipment and to protect power generating facilities.*
- National Park Service/Concession housing and Water Treatment Area on Bull Gulch and immediately to the East of Bull Gulch.
 - *This closure is necessary for privacy of employee housing area and water treatment facility.*
- Grizzly Gulch Sewage Treatment Plant within the fenced enclosure. Oak Bottom Sewage Treatment spray field.

- Whiskey Creek Water Treatment Plant and its access road.
 - *These closures are necessary to protect visitors from dangerous equipment and to protect facilities.*
- Brandy Creek Water Treatment and Wastewater Treatment Facilities and their access road.
 - *These closures are necessary to protect visitors from dangerous equipment and to protect facilities.*
- The Dry Creek sewage treatment spray field within the fenced enclosure. The Dry Creek spring and water collection area and water treatment facility.
 - *These closures are necessary to protect visitors from dangerous equipment and to protect facilities.*
- Oak Bottom fire station building, office buildings, and water tank.
 - *This closure is necessary to protect government facilities.*
- The Liberty Gulch drainage north of Pioneer Drive from Pioneer Drive at the access road gate to the Whiskeytown Unit Boundary including the firearms range.
 - *This closure is necessary to protect visitors from active firearms range.*
- The Spring Creek Tunnel gauging station within the fenced enclosure.
 - *This closure is necessary to protect BOR facilities.*
- Headquarters buildings, headquarters maintenance facilities, government boat launching facility, boat docks and surrounding waters (as delineated by a log boom at the entrance to the channel and a buoy line in the center of the channel; excepting the Headquarters building lobby and lobby access and the parking lots east of the fenced maintenance compound enclosure.
 - *This closure is necessary to keep visitors out of employee work stations and dangerous and/or secure work facilities.*
- NOTE: Except in the excluded water area delineated above the high water line of Whiskeytown Lake (as posted to exclude public access) and extending 100' each direction from the end of the paved service road, government boat access and area extending 100' in all directions from the water intake pump house, the closure depicted on the map (Appendix C) is intended to exclude a zone, extending back 25' from the high water line of Whiskeytown Lake, which is open to public access along the shoreline in the vicinity of Headquarters.
 - *This closure is necessary to protect government boat dock facilities and equipment from vandalism.*
- Water Tank and immediate area surrounding on the Shasta Divide ridge.
 - *This closure is necessary to protect this facility from vandalism and tamper.*

- The Whiskeytown Dam spillway ("Glory Hole"), vicinity and surrounding waters within the area partially enclosed by a fence on the east and south, along a line extending between the ends of the fence and the concrete buoy line anchors and thence along a line usually indicated by a buoy line.
 - *This closure is necessary to protect visitors from a dangerous spillway and to protect BOR facilities.*
- The Whiskeytown Dam Spillway outflow and after bay 50 feet from the existing water line 300 feet downstream along Clear Creek including the power generation structures, access roads and parking areas at the base of Whiskeytown Dam and including an area enclosed by a road accessing the power substation on the northwest, a road accessing the Clear Creek water treatment chlorination plant on the southwest and the Paige Bar Road between the aforementioned roads along the southeast including the Clear Creek Water Treatment Facility.
 - *This closure is necessary to protect visitors from dangerous facilities and to protect BOR, REU, and Clear Creek CSD facilities.*
- The Clear Creek Water District water tank and its immediate vicinity.
 - *This closure is necessary to protect the water tank from vandalism and tamper.*
- The Whiskeytown Environmental School Camp and its environs to all persons except those authorized by the Superintendent of Whiskeytown Unit and/ or the Shasta County Superintendent of Schools.
 - *This closure is necessary to protect children, permitted guests and facilities at Whiskeytown Environmental School Camp.*
- The lower Brandy Creek water tank and immediate vicinity.
 - *This closure is necessary to protect facilities from vandalism and tamper.*
- That area as posted along a perimeter, for the protection of the remnant Puccinellia Howelli population and its attendant mineral spring habitat site near SR 299 Wat Crystal Creek Road.
 - *This closure is necessary to protect critical habitat.*
- Areas within the developed property at the summit of Shasta Bally Mountain, for use as a tele- communications facility as identified on the attached map (Appendix D).
 - *This closure is necessary to protect facilities from vandalism.*
- All portions of the Whiskey Creek Bridge structure on California Highway 299 W, except the upper surface on or immediately adjacent to the highway, are closed to walking, climbing or traversing.
 - *This closure is necessary to protect visitors from high-speed vehicular traffic on this narrow corridor that offers no road shoulder.*
- Land in the South Fork Mountain area, known as the South Fork Mountain Lookout Road, beginning at the road gate, and continuing for 4.3 miles to the park boundary near the top of South Fork Mountain shall be closed to all motor vehicles, except those individuals and businesses with legal access to private facilities beyond the park boundary. During deer and bear hunting season, the Superintendent may allow motor vehicle access on the road if the Chief Ranger determines opening the road will not interfere in an investigation or put the public in danger.

- *This closure has been implemented to reduce reoccurring criminal activities related to cultivation of marijuana on public lands. Additionally, this closure is necessary to protect telecommunications facilities from vandalism.*
- The former Crystal Creek Boy's Camp to include all buildings, infrastructure and land formerly owned by the State of California as identified on attached map (Appendix I).
 - *This closure is necessary to protect facilities from vandalism and from the hazards presented by the buildings.*
- The new orchard as contained by the game fence within the Tower House Historic District.
 - *This closure is necessary to protect new plants of historic varieties of fruit trees.*
- The following roads, trails, and public use areas remain closed due to the Carr Fire and aftereffects:
 - Salt Gulch Trail
 - Kanaka Peak Trail
 - Kanaka Cut-Off Trail
 - NEED Camp Trails
 - Mill Creek Trail
 - Brandy Creek Falls Trail uphill of Rich Gulch
 - Peltier Valley Road from Peltier Campground to the Brandy Creek Road (closed to motor vehicles only)
 - Shasta Bally Road from gate above Sheep Camp (40°35.965', -122°35.864') (closed to public motor vehicle access)
 - Pioneer Drive and the Whiskey Creek Group Picnic Area (closed to public motor vehicle access and reservations)
 - Coggins Park Primitive Camp

These trails, roads, and public use areas received damage both directly from the Carr Fire and as a result of increased erosion post Carr Fire. Down trees and dead standing trees remain a significant threat to public safety. The NPS continues to work to reopen areas of the park impacted by the Carr Fire.

(a)(2) The following areas have been designated for a specific use or activity, under the conditions and/or restrictions as noted:

COVID Related Restrictions (The following restrictions go into effect upon the State of California determining the case count in Shasta County, CA, is "high:")

- Individuals over the age of two years must wear masks, except when actively eating or drinking, in the following locations:

1. All common areas and shared workspaces in buildings owned, rented, or leased by the National Park Service, including, but not limited to, park visitor centers, administrative offices, lodges, gift shops, and restrooms.

2. The following outdoor areas, when others are present, where the superintendent has determined that physical distancing (staying at least six feet apart) cannot reasonably be maintained:

- Outdoor areas adjacent to the Whiskeytown Visitor Center
- Amphitheaters and open-air pavilions
- Masks must cover the nose and mouth and fit snugly around the nose and chin with no large gaps around the sides of the face. Masks not designed to be protective, masks with ventilation valves, and face shields do not meet the requirement.
 - The NPS issues this administrative order for the purposes of maintaining public health and safety during the COVID-19 pandemic emergency. This order is consistent with Executive Order 13991, Protecting the Federal Workforce and Requiring Mask-Wearing.
 - These directives require the NPS to take the actions identified, as appropriate and consistent with applicable law, to require compliance with Centers for Disease Control and Prevention guidelines with respect to wearing masks, maintaining physical distance, and other public health measures by: on-duty or on-site Federal employees; on-site Federal contractors; and all persons in Federal buildings or on Federal lands.
 - In addition to physical distancing and hand washing, masks are a critical step to help prevent people from getting and spreading COVID-19. When you wear a mask, you protect others as well as yourself.
 - COVID-19 spreads mainly from person to person through respiratory droplets. Masks are a simple barrier to help prevent respiratory droplets from reaching others.
 - Masks can prevent the spread of the disease even when the wearer is not sick. This is because several studies have found that people with COVID-19 who never develop symptoms (asymptomatic) and those who are not yet showing symptoms (pre-symptomatic) can still spread the virus to other people.
 - Masks may not be necessary when you are outside by yourself away from others, or with other people who live in your household.
 - It is especially important to wear a mask indoors with people you do not live with and when you are unable to stay at least 6 feet apart because COVID-19 spreads mainly among people who are in close contact with one another.

Gold Panning:

- Gold panning is prohibited along Clear Creek from the mouth of Paige Bar Creek to the Whiskeytown Environmental School Camp access road bridge over Clear Creek.
- This restriction is necessary to keep park visitors from disturbing educational programs at Whiskeytown Environmental School Camp.

Camping:

- Please refer to §2.10 for detailed camping area designations.

Boat Launching Sites:

The following locations are open and available to the public for the purpose of launching and retrieving vessels on Whiskeytown Lake:

- Whiskey Creek Launch Ramp
- Oak Bottom Launch Ramp
- Brandy Creek Launch Ramp

Docking or Mooring Areas:

The following locations are open and available to the public for the purpose of docking or mooring vessels and subject to the terms and conditions set by the Whiskeytown Concessionaire:

- Oak Bottom Marina mooring buoys and docks
- Brandy Creek Marina mooring buoys and docks

Flat Wake Areas:

The following areas are defined as Flat Wake Areas, as marked by regulatory buoys set and maintained by the National Park Service and as further identified and defined on maps (Appendix E) attached to and made part of this document.

- Whiskey Creek Arm, north at a line marked by regulatory buoys set and maintained by the National Park Service, and as defined on the attached map (Appendix E).
- Oak Bottom Channel, from a line east of Oak Bottom as marked by regulatory buoys set and maintained by the National Park Service, to the furthest extent of the navigable waters West of Oak Bottom, and as defined on the attached map (Appendix E).
- Brandy Creek Marina and Beach, as marked by regulatory buoys set and maintained by the National Park Service, and as defined on the attached map (Appendix E).
 - *These restrictions are necessary to provide safe entry and exit from congested boat marinas, increase public safety with limited sight distance, and to protect docked boats from damage caused by excessive rocking. Minimal wake reduces shoreline erosion.*

Water Skiing/Towing Areas:

- Water skiing is permitted within Whiskeytown Lake except those designated Flat Wake Areas

Swimming Beaches/Areas:

- Oak Bottom Beach
- Brandy Creek Beach
- East Beach
- Whiskey Creek Group Picnic Area Beach

Personal Watercraft Use Areas:

- Personal Watercrafts (PWC) and electric PWCs are prohibited at Whiskeytown.
- Submersible and Semi-submersible watercraft are allowed by permit only.

Model boats:

- The designated model boat use area is in the lake area on the northeast corner of Brandy Creek Marina.

- Only electric or non-motorized boats are allowed.
- Model boats must be kept clear from wildlife, persons, and boats.
 - *This designation concentrates the model boats in this developed area.*

Unmanned Aircraft

- Launching, landing, or operating an unmanned aircraft from or on lands and waters administered by the National Park Service within the boundaries of Whiskeytown National Recreation Area is prohibited except as approved in writing by the superintendent.
 - The designated model aircraft use area is in and above the lake area on the northeast corner of Brandy Creek Marina.
 - Only electric or non-motorized aircraft are allowed.
 - Model aircraft must be kept clear from wildlife, persons, and boats.
 - All groups or individuals wishing to participate in this activity must apply and be granted a permit for this activity by the superintendent.
- Unmanned aircraft is defined to mean a device that is used or intended to be used for flight in the air without the possibility of direct human intervention from within or on the device, and the associated operational elements and components that are required for the pilot or system operator in command to operate or control the device (such as cameras, sensors, communication links). This term includes all types of devices that meet this definition (e.g., model airplanes, quad copters, drones) that are used for any purpose, including for recreation or commerce.
 - *This closure is necessary to provide for visitor health and safety, protection of environmental and scenic values; protection of natural and cultural resources; avoidance of conflict among visitor use activities; impacts to view sheds; and reduction of unreasonable noise.*

Technical Rock-Climbing Routes:

- None

The following restrictions and/or conditions are in effect for the specific uses or activities noted:

- None

(a)(3) The following restrictions, limits, closures, designations, conditions, or visiting hour restrictions imposed under §§ (a) (1) or (2) have been terminated:

- None

36 CFR §1.6 - ACTIVITIES THAT REQUIRE A PERMIT

(f) The following is a compilation of those activities for which a permit from the Superintendent is required:

§2.5(a) Specimen collection (Take plant, fish, wildlife, rocks or minerals)

§2.10(a) The following camping activities:

- Camping within the Oak Bottom Campground tent and recreational vehicle camping areas.
- Camping in and access to Dry Creek Group Campground.

- Camping within the Brandy Creek Recreational Vehicle camping area.

- Camping in all primitive campsites
- Camping in all backcountry locations

§2.12 Audio Disturbances

- (a)(2) Operating a chain saw in developed areas
- (a)(3) Operation of any type of portable motor or engine, or device powered by a portable motor or engine in non-developed areas
- (a)(4) Operation of a public address system in connection with a public gathering or special event for which a permit has been issued pursuant to §2.50 or §2.51.

§2.17 Aircraft & Air Delivery:

- (a)(1) Use of model aircraft within the designated area at Brandy Creek Marina
- (a)(3) Delivery or retrieval of a person or object by parachute, helicopter or other airborne means
- (c)(1) Removal of a downed aircraft

§2.23(b) Recreation activities (per 36 CFR Part 71) including:

- Access to and use of Whiskey Creek Group Picnic Area.
- Use of the Oak Bottom Amphitheater to organized groups.
- The use of Whiskeytown Environmental School Camp facilities by private parties during times when the school is not in session.

§2.37 Soliciting or demanding gifts, money goods or services (Pursuant to the terms and conditions of a permit issued under §2.50, §2.51 or §2.52)

§2.38 Explosives:

- Use, possess, store, transport explosives, blasting agents
- Use or possess fireworks

§2.50(a) Conduct a sports event, pageant, regatta, public spectator attraction, entertainment, ceremony, and similar events

§2.51(a) Public assemblies, meetings, gatherings, demonstrations, parades, and other public expressions of views require a permit when the activity involves more than 25 persons or is requested for a location outside the identified designated areas. The following locations are designated for First Amendment activities:

- The area at the Whiskeytown Visitor Center, between the fire hydrant and stop sign, adjacent to the southwest side of the parking lot (40°36'51.67"N, 122°31'15.13"W).
- At Brandy Creek Beach, around the group of 3 oak trees closest to the snack bar, directly north of the snack bar.

§2.52(c) Sale or distribution of printed matter that is not solely commercial advertising requires a permit when the activity involves more than 25 persons or is requested for a location outside the identified designated areas. The following locations are designated for First Amendment activities:

- The area at the Whiskeytown Visitor Center, on the between the fire hydrant and stop sign adjacent to the southwest side of the parking lot (40°36'51.67"N, 122°31'15.13"W).
- At Brandy Creek Beach, around the group of 3 oak trees closest to the snack bar, directly north of the snack bar.

§2.60(b) Livestock use

§2.61(a) Residing on federal lands

§2.62 Memorialization:

- Erection of monuments (Requires approval from Regional Director)
- Scattering ashes from human cremation outside of designated areas

§4.11(a) Exceeding established vehicle load, weight and size limits

§5.1 Advertisements - (Display, posting or distribution.)

§5.3 Engaging in or soliciting any business (requires a permit, contract, or other written agreement with the United States, or must be pursuant to special regulations).

§5.5 Commercial Photography/Filming:

- (a) Commercial filming as defined by 43 CFR § 5.12
- (b) Still photography as defined by 43 CFR § 5.12

§5.6(c) Use of commercial vehicles on park area roads (The superintendent shall issue a permit to access private lands within or adjacent to the park when access is otherwise not available)

§5.7 Construction of buildings, facilities, trails, roads, boat docks, path, structure, etc.

§7.91(c) Powerless flight

§7.91(d)2ii Gold panning within Whiskeytown NRA

III. GENERAL REGULATIONS

36 CFR §2.1 - PRESERVATION OF NATURAL, CULTURAL AND ARCHEOLOGICAL RESOURCES

(a)(4) Dead wood on the ground may be collected for use as fuel for campfires within the park in the following areas:

- All of the Whiskeytown Unit

(a)(5) The following conditions are in effect for walking, climbing, entering, ascending or traversing the listed archeological or cultural resource, monuments or statues:

- None

(c)(1), (c) (2) The following fruits, nuts, berries or unoccupied seashells may be gathered by hand for personal use or consumption, in accordance with the noted size, quantity, collection sites and/or use or consumption restrictions:

- Blackberries, raspberries, thimbleberries, gooseberries, huckleberries, apples, pears, cherries, hazelnuts, grapes, quince, figs, or persimmons - 2 gallons per person per day, as long as there is no shaking, breaking, cutting, or climbing of trees and shrubs.
- Mushrooms - 2 gallons per person per day, as long as mushrooms are collected by hand, only.
- The fenced Tower House Historic District Orchard is closed to the harvest of fruit.

The taking of the above authorized collection items will not adversely affect park wildlife or the reproductive potential of the plant species or otherwise adversely affect park resources.

36 CFR §2.2 - WILDLIFE PROTECTION

- The transporting of lawfully taken wildlife through the park is permitted under the following conditions and procedures:
 - While the person or persons transporting said wildlife are in possession of current and appropriate licenses and validated game tags(s) for the wildlife and in compliance with the laws and regulations of the State of California.
- The following areas are closed to the viewing of wildlife with the use of an artificial light:
 - All Federally owned lands within the boundaries of Whiskeytown NRA are closed to the viewing of wildlife with the use of an artificial light.

36 CFR §2.3 - FISHING

The following State fishing laws and/or regulations, as noted, do not apply in the listed areas:

- NONE

(d)(2) Possession or use of live or dead minnows or other bait fish, amphibian, non-preserved fish eggs or roe is permitted in the following freshwater areas:

- NONE

(d)(4) In accordance with federal statutory law, commercial fishing is authorized in the following areas, under the conditions noted:

- NONE

(d)(8) Fishing is allowed in or from the following otherwise prohibited areas:

Motor road bridges:

- NONE

Within 200 feet of public rafts or floats designated for water sports:

- NONE

Swimming beaches:

- NONE

36 CFR §2.4 - WEAPONS, TRAPS, AND NETS

(a)(2)(i) Weapons, traps, or nets may only be carried, possessed, or used at the following designated times and locations:

- During hunting seasons in authorized areas, and pursuant to the lawful taking of wildlife, and in compliance with California laws and regulations.
- During the designated fishing season: nets used for the landing of fish and pursuant to the lawful taking of fish.

36 CFR §2.10- CAMPING and FOOD STORAGE

- The sites and areas listed below have been designated for camping activities as noted. A permit system has been established for certain campgrounds or camping activities, and conditions for camping and camping activities are in effect as noted:

Designated Camping Areas

Camping is allowed within Whiskeytown NRA, by permit, only in the following locations:

- Oak Bottom Tent Campground (tent camping ONLY)
- Oak Bottom RV Campground (recreational vehicle camping ONLY)
- Brandy Creek RV Campground (recreational vehicle camping ONLY)
- Dry Creek Group Campground (Tent Group Camping by Prior Reservation ONLY)
- Horse Camp Campground (Camping with livestock permitted)
- Coggins Park Primitive Camp (CLOSED DUE TO CARR FIRE)
- Crystal Creek Primitive Camp (tent camping ONLY)
- Peltier Bridge Primitive Camp (tent camping ONLY)
- Sheep Camp Primitive Camp (tent camping ONLY)
- Brandy Creek Primitive Camp (tent camping ONLY)
- Undeveloped Areas (backpacking ONLY) (CLOSED DUE TO CARR FIRE)

Camping Seasons

Camping is allowed in seasonal campgrounds during April 1 to October 31:

- Dry Creek Group Campground
- Coggins Park Primitive Camp (CLOSED DUE TO CARR FIRE)
- Crystal Creek Primitive Camp (tent camping ONLY)
- Sheep Camp Primitive Camp (tent camping ONLY)
- Brandy Creek Primitive Camp (tent camping ONLY)

The following campgrounds are open year-round:

- Oak Bottom Tent Campground (tent camping ONLY)
- Oak Bottom RV Campground (motor home and trailer camping ONLY)

- Brandy Creek RV Campground (motor home and trailer camping ONLY)
- Horse Camp Campground (Camping with livestock permitted)
- Peltier Bridge Primitive Camp (tent camping ONLY)

Conditions for Camping

Camping is limited to an aggregate of 14 days between April 1 and October 31 (inclusive) and no more than 30 days per person per calendar year. No period of stay of 30 days may be succeeded by any period of stay with less than a 7-day break.

The 14 day between April 1 and October 31 is necessary to provide more equitable access to campsites. The maximum 30 window between November 1 and March 30 is necessary to prevent individuals from residing within Whiskeytown.

Persons applying for said permit shall:

- Provide verifiable identification (i.e.: valid state driver's license or identification card or sufficient data to verify computer record of same) of all person's age 16 or over who will be camping under the permit.
- Identify the name and age all persons under age 16 who will be camping under the permit. Provide the license number and description of all vehicles driven to the campsite.
- Obtain Oak Bottom Campground Permit via Whiskeytown Marina Store.
- Obtain the permit via Recreation.gov. The camping permit must be possessed and displayed in compliance with terms and conditions identified on the permit.

The maximum occupancy per site is six (6) persons, two motor vehicles (excluding vehicles designed for towing) and two tents. Any vehicle or combination of vehicles including trailers, motorhomes, motorhomes pulling other vehicles or trailers that exceed 25 feet are prohibited in all campgrounds designated as primitive.

Camping within the Brandy Creek and Oak Bottom recreational vehicle camping areas is limited to persons utilizing motorhomes and trailers equipped with fully self-contained toilet and wastewater devices. No tents are permitted. Fully self-contained toilet and wastewater devices are defined as apparatus permanently constructed within a motor vehicle for the purpose of collecting and storing human waste products and wastewater for later disposal in a dump station or other device designed and intended as an inlet to a permitted wastewater treatment works.

Camping by backpacking in Whiskeytown is allowed by free permit in undeveloped areas. Camp must be a minimum of one mile from Whiskeytown Lake and at least 100 feet from any trail or stream. Portable stoves are allowed except during fire restrictions. Check at the Visitor Center for all conditions of the permit. (CLOSED DUE TO CARR FIRE)

(b)(3) Camping within 25 feet of a fire hydrant or main road, or within 100 feet of a flowing stream, river or body of water is authorized only in the following areas, under the conditions noted:

Within Designated Campsites only

(d) Conditions for the storage of food are in effect, as noted, for the following areas:

When not in use, food, lawfully taken wildlife and fish, garbage, and containers and equipment used to cook or store food must be contained within bear-resistant food storage lockers (where provided) bear-resistant refuse containers (where provided) or out of sight in a hard sided vehicle or vehicle trunk by persons camping or picnicking in areas authorized for access by motor vehicle.

36 CFR §2.11 – PICNICKING

Conditions for Picnicking:

- Picnicking is permitted in campgrounds only in conjunction with camping.
- Picnicking is permitted throughout Whiskeytown NRA where it does not interfere with other park uses, except in areas where other use or occupation restrictions or prohibitions apply.

36 CFR 2.13 - FIRES

(a)(1) The lighting or maintaining of fires is generally prohibited, except as provided for in the following designated areas and/or receptacles, and under the conditions noted:

Designated Areas Where Fires Are Permitted Within Fire Grates and Receptacles:

1. Coggins Park Primitive Campsite (CLOSED DUE TO CARR FIRE)
2. Crystal Creek Primitive Campsite
3. Sheep Camp Primitive Campsite
4. Brandy Creek Primitive Campsite
5. Peltier Bridge Primitive Campsite
6. Horse Camp Primitive Campsite
7. Oak Bottom Beach Picnic Area
8. Oak Bottom Tent Campground
9. Whiskey Creek Launch Ramp Picnic Area
10. Whiskey Creek Group Picnic Area (CLOSED DUE TO CARR FIRE)
11. Carr Powerhouse Day Use Area
12. Brandy Creek Beach Picnic Area

Receptacles Allowed:

- Fires are permitted in grates in all picnic areas, the Oak Bottom Campground, the Dry Creek Campground, Whiskey Creek Group Picnic Area and in safe locations.

Established Conditions for Fires:

- The Superintendent may close all or part of Whiskeytown NRA at any time due to extreme fire danger, through the posting of signs, placards and or public notices.
- No fires may be lit or maintained within the closure areas during these periods.

(a)(2) The following restrictions are in effect for the use of stoves or lanterns:

- The use of stoves and lanterns is permitted incident to lawful camping and picnicking at designated camping or picnic areas, at all times when no fire restrictions are in effect.

(b) Fires must be extinguished according to the following conditions:

- Fires must be extinguished by the application of water and mixing all burned materials until they are cool to the touch.

36 CFR §2.14 - SANITATION and REFUSE

(a)(2) The use of government refuse receptacles or facilities for dumping household, commercial or industrial refuse, brought as such from private or municipal property is allowed under the following conditions:

- None

(b) Conditions for the disposal, containerization, or carryout of human body waste have been established as follows:

- Human waste must be either buried or containerized and carried out of all undeveloped areas within Whiskeytown NRA

36 CFR §2.15 - PETS

(a)(1) The following structures and/or areas are closed to the possession of pets:

- Whiskeytown Visitor Center
- Camden House
- Brandy Creek swim beaches, adjacent picnic areas and grounds and lake within the swim area buoys.
- Oak Bottom swim beach, adjacent picnic areas and grounds and lake within the swim area buoys.
- East Beach and adjacent grounds and lake within the swim area buoys.
- Whiskey Creek Group Picnic area, beach, and lake within the swim area buoys.

(a)(3) Pets may be left unattended and tied to an object in the following areas, under the conditions noted:

- NONE

(a)(5) Pet excrement must be disposed of in accordance with the following conditions:

- Visitors to developed areas including but not limited to campgrounds, launch ramps, beaches, parking lots, picnic areas and the vicinity of other buildings open to public access, must dispose of their pet's excrement by placing it in the closest garbage container.

(b) The use of dogs in support of hunting must be in accordance with Federal and State laws and the following conditions:

- None

(e) Pets may be kept by park residents under the following conditions:

- Common house pets may be kept by residents when said animals are fenced, caged, or restrained such that they may not free range beyond the curtilage of the residence.

36 CFR §2.16 - HORSES and PACK ANIMALS

(a) The following animals are designated as pack animals for purposes of transporting equipment:

- Horses
- Burros
- Mules
- Camelids
- Goats

(b) The use of horses or pack animals is allowed on the following trails, routes, or areas:

All trails, routes, or areas within Whiskeytown NRA, excepting:

- Brandy Creek Marina, Beaches, day use parking lots and Self-Contained Recreational Vehicle camping area
- Whiskey Creek Launch Ramp, Picnic Area and parking lot
- Oak Bottom Campground, Beach, Launch Ramp, Marina, and day use parking lot
- Whiskeytown Environmental School Camp
- Dry Creek Campground
- Whiskey Creek Group Picnic Area
- Overlook Visitor Center parking lot and lawns area
- Headquarters parking lot and lawns area.
- All paved roadways, except to cross at right angles
- James Carr Trail to Whiskeytown Falls (from the Mill Creek Trail junction to the falls)
- Davis Gulch Trail
- Crystal Creek Water Ditch Trail
- Guardian Rock Vista Point Trail (from Whiskeytown Environmental School Camp Bridge to Horse Camp)

(d) Free-trailing or loose-herding is allowed on the following trails/routes, subject to the conditions noted:

- None

(g) Other conditions concerning the use of horses or pack animals:

- None

36 CFR §2.17 - AIRCRAFT and AIR DELIVERY

(c)(1) The removal of a downed aircraft, components, or parts thereof is subject to procedures established by the Superintendent through written authorization.

36 CFR §2.19 - WINTER ACTIVITIES

(a) The following park roads and/or parking areas open to motor vehicle traffic may be used for skiing, snowshoeing, ice skating, inner tubing; tobogganing, and similar winter activities under the conditions noted:

- Closed Park Roads may be used for skiing or snowshoeing.

(b) The towing of persons on skis, sled or other similar device by motor vehicle or snowmobile is allowed in the following areas and/or routes:

- None

36 CFR §2.20 - SKATING, SKATEBOARDS and SIMILAR DEVICES

The use of roller skates, skateboards, roller skis, coasting vehicles, or similar devices are allowed only in the following areas:

- None

36 CFR §2.21 - SMOKING

(a) The following portions of the park, or all or portions of buildings, structures or facilities are closed to smoking as noted:

Smoking is prohibited in Whiskeytown NRA except for the following designated areas: in your vehicle (either inside your vehicle or within 5 feet of your vehicle when parked in a paved or gravel parking lot), on your watercraft while underway, in your permitted campsite, and in designated and signed smoking areas (at Brandy Creek Beach, Oak Bottom Beach, Visitor Center, Park Headquarters-maintenance yard and the Oak Bottom Marina Office area). (See appendix H for the park wide map for designated smoking areas. For detailed maps see the following appendices: H-1 for Brandy Creek Area map, H-2 for Oak Bottom Area map and H-3 for the Visitor Center Area map).

For the purposes of this regulation smoking means the carrying of lighted cigarettes, cigars or pipes, or the intentional and direct inhalation of smoke from these objects. This includes the use of electronic devices known as e-cigarettes.

In 2015, Whiskeytown NRA worked with Shasta County Public Health on a campaign to reduce tobacco use within the county. The smoking ban supports this effort. The prohibition also was designed to reduce the volume of micro-trash associated with smoking.

36 CFR §2.22 - PROPERTY

(a)(2) Property may be left unattended for periods longer than 24 hours in the following areas and under the following conditions:

- Vessels at Brandy Creek Marina, Brandy Creek Dry Boat Storage, and Oak Bottom Marina when all fees have been paid to the concessionaire.
- Camping equipment at designated camping sites when valid camping permit is in possession for that site.

36 CFR §2.23- RECREATION FEES

(b) Recreation fees, and/or a permit, in accordance with 36 CFR part 71, are established for the following entrance fee areas, and/or for the use of the following specialized sites, facilities, equipment or services, or for participation in the following group activity, recreation events or specialized recreation uses:

Recreation Fee Areas:

All NPS lands and waters within the boundaries of Whiskeytown National Recreation Area

Specialized Site Use Fee Areas:

1. Oak Bottom Tent Campground
2. Oak Bottom RV Campground
3. Brandy Creek RV Campground
4. Dry Creek Group Campground
5. Horse Camp Campground
6. Coggins Park Primitive Camp (CLOSED DUE TO CARR FIRE)
7. Crystal Creek Primitive Camp
8. Peltier Bridge Primitive Camp
9. Sheep Camp Primitive Camp
10. Brandy Creek Primitive Camp
11. Whiskey Creek Group Picnic Area
12. Whiskeytown Environmental School Camp

Special Recreation Permit Fee (Such as but not limited to. group activities, recreation events, and the use of motorized recreation vehicles):

- Weddings
- Gold Panning

Other events, such as marathons, races, regattas, etc., are subject to a permit fee dependent upon the magnitude of the event and the impact to the park.

36 CFR §2.35 - ALCOHOLIC BEVERAGES and CONTROLLED SUBSTANCES

(a)(3)(i) The following public use areas, portions of public use areas, and/or public facilities within the park are closed to consumption of alcoholic beverages, and/or to the possession of a bottle, can or other receptacle containing an alcoholic beverage that is open, or has been opened, or whose seal has been broken or the contents of which have been partially removed:

- Oak Bottom swim beach, adjacent parking lot, adjacent picnic areas and grounds and lake within the swim area buoys.
- Brandy Creek swim beaches, parking lots, entrance driveway, adjacent picnic areas and grounds and lake within the swim area buoys.
- Whiskey Creek day use (reservation) picnic area, beach, and lake within the swim area buoys.
- East Beach and cove north of East Beach along with adjacent grounds, parking lot and lake within the swim area buoys.

NOTE: The areas described above are defined on maps (Appendix F) attached to and made part of this document.

The NPS first banned alcohol on these designated swim beaches in 1988 following years of issues around drunkenness, fighting, assaults, DUIs, and fatal accidents. Strick application of public drunkenness laws, disorderly conduct laws, and DUI laws did not stop the volume of issues. Closures of these beaches cut the number of arrests by 50% in the first year of application. Continued application of the closure allows for a safe, family friendly environment on the busy swim beaches.

36 CFR §2.62 - MEMORIALIZATION

(b) A permit is required for the scattering of ashes from cremated human remains, or in the following designated areas without a permit, in accordance with the following terms and conditions:

- The scattering of human ashes from cremation, without a permit, is allowed under the following terms and conditions:
 - The remains to be scattered must have been cremated and pulverized.
 - The scattering of remains by persons on the ground is to be performed at least 100 yards from any trail, road, developed facility, or body of water.
 - The scattering of remains from the air is to be performed at a minimum altitude of 2000 feet above the ground.
 - No scattering of remains from the air is to be performed over developed areas, facilities, or bodies of water.
 - The scattering of remains within the Tower House Historic District is prohibited.

36 CFR §3.3 - VESSEL PERMITS

Permits are required for the use of a vessel in the following areas:

- None

36 CFR §3.6 - BOATING OPERATIONS

(d)(1) Vessels may not create a wake or exceed 5 mph in the following areas:

- Clear Creek Channel west of Oak Bottom Campground
- Upper Whiskey Creek Arm
- Brandy Creek Marina and Beach
- Davis Gulch
- All locations within 100 feet of another vessel, either moored or underway, non-motorized craft, rafts, anglers, and any shoreline

NOTE: The Flat Wake Areas described above are defined by marker buoys set and maintained by the National Park Service and as identified on maps (Appendix E) attached to and made part of this document.

NOTE: Vessels operated during competitive sailing events or human powered boating events, pursuant to and in compliance with the terms and conditions set forth in a permit issued by the Superintendent, are not subject to the provisions of subparagraph iv, unless specified by the terms of the permit.

(h) The following areas/sites are designated for the launching or recovery of vessels using a trailer:

- Oak Bottom Launch Ramp
- Whiskey Creek Launch Ramp
- Brandy Creek Launch Ramp
- Government Dock (for official use only)

(i) The following areas/sites are designated for the launching or recovery of vessels propelled by machinery:

- Oak Bottom Launch Ramp
- Whiskey Creek Launch Ramp
- Brandy Creek Launch Ramp
- Government Dock (for official use only)

(l) Vessels must meet the following size, length, or width restrictions:

- Vessels over 36' 00" in length are prohibited

36 CFR §3.20 - WATER SKIING

(a) The towing of persons by vessels is allowed in the following areas under the terms and conditions noted:

- All areas of Whiskeytown Lake except those where vessels may not create a wake or exceed 5 mph.

36 CFR §3.21 - SWIMMING AND BATHING

(a)(1) The following areas are closed to swimming and bathing:

- All locations within 200 feet of any designated boat launching or mooring facility or device
- 50 feet north and south of the Whiskey Creek Bridge of California Highway 299 W.

(a)(2) The following restrictions apply to all swimming and bathing activities:

- None

(b) The use of floatation devices, glass containers, kites, or incompatible sporting activities is not permitted on the following swimming beaches, as noted:

- None

36 CFR §3.23 - SCUBA AND SNORKELING

(a) SCUBA diving and snorkeling is permitted in the following swimming, docking, and mooring areas under the terms and conditions noted:

- None

36 CFR §3.24 - PERSONAL WATERCRAFT (PWC)

- Personal watercraft (PWC) and electric PWCs use is prohibited within Whiskeytown National Recreation Area.

Submersible and Semi-submersible watercraft are allowed by permit only.

36 CFR §4.10 - TRAVEL ON PARK ROADS AND ROUTES.

(a) Park roads open for travel by motor vehicle are those indicated below, and/or as indicated in the following publication or document (attached hereto):

Park roads, which are open, closed or restricted for public use, are identified on a map (Appendix G), which is attached to and made a part of this document. These roads are defined as follows:

Public Roads not owned and maintained by the National Park (BLACK)

Park Roads open for public access at all times, except in the event of temporary emergency closure (GREEN)

Open to public access at limited times or under limited conditions (RED).

Open for use only by authorized motor vehicles, for official purposes (BLUE).

Administrative Roads not open for public use (YELLOW).

In all cases exceptions are authorized in the case of emergency, or for purposes of law enforcement, maintenance, repair, or management of natural resources.

A listing of these roadways and their designations follows:

Public Roads not owned and maintained by the National Park Service designated in BLACK on the map attached to and made part of this document (Appendix G):

- California Highway 299 (SR299W) throughout Whiskeytown NRA.
- That road commonly known as "County Line Road" along all portions of the road within the jurisdiction of the National Park Service, Whiskeytown National Recreation Area.
- Trinity Mountain Road, from the intersection of SR299W to the northern most boundary of Whiskeytown NRA.
- Whiskey Creek Road, from the intersection of SR299W to the northern most boundary of Whiskeytown NRA.
- The paved portion of the Crystal Creek Road, from the intersection of SR299W to the Crystal Creek Falls trailhead.
- Kennedy Memorial Drive from the intersection of SR299W to Brandy Creek.
- Mule Town Road throughout Whiskeytown NRA, within 20 feet of the edge of the improved and maintained portions of the roadway.

Roads Open to Public Access - designated in GREEN on the map attached to and made part of this document (Appendix G):

- The paved portion of the Crystal Creek Road from the Crystal Creek Falls Trailhead to the gate delineating the perimeter of the Crystal Creek Regional Boys Camp and the gate delineating the end of the unpaved portion of the Crystal Creek Road.
- Carr Powerhouse access road along all portions of the paved roadway and on the paved parking area.
- The remnant portion of SR299W leading from the intersection of Carr Powerhouse Road to the eastern terminus.
- Recreation access roadways in the vicinity of Carr Powerhouse Road.
- Kennedy Memorial Drive from Brandy Creek to the gate delineating the perimeter of the Dry Creek Group Camping Area.
- Improved surfaces of designated parking and scenic view areas, within defined parking and traffic barriers, along Kennedy Memorial Drive, within 75 feet of the edge of the roadway.
- The paved roadways and parking areas immediately adjacent to the Whiskeytown NRA Visitor Center.
- The unpaved parking area immediately adjacent to the Brandy Creek Beach access road, within the Brandy Creek Beach recreation complex within upon improved surfaces only.
- The paved roadways, parking areas and launch ramp area within the Brandy Creek Marina and RV Camping area, excepting the dry boat storage for concessions customers within the fenced perimeter.
- Peltier Valley Road from the intersection with Paige Bar Road, to the intersection of Shasta Bally Road, within 20 feet of the edge of the improved and maintained

portion of the roadway. (CLOSED beyond Peltier Campground because of a significant washout post Carr Fire)

- Access roadway within the Peltier Bridge Camping area, to all points within 50 feet of the designated camping sites.
- Paved portions and improved unpaved portions and areas of the Paige Bar Road, from Kennedy Memorial Drive to Mule town road, within 20 feet of the edge of the improved and maintained roadway.
- Improved portions of the Mount Shasta Mine Loop Trail Head parking lot, within defined traffic control barriers.
- Improved areas designated for use with traffic control barriers within the Horse Camp camping area.
- That road known as "Pioneer Drive" from the intersection with Whiskey Creek Road, generally east to the gate delineating the boundary and public use restricted area of the Whiskey Creek Group Picnic Area. (CLOSED due to damage from the Carr Fire)

NPS Roads with Increased Erosion Due to the Carr Fire and Subject to Closure During and Immediately After Storms

- Shasta Bally Road, from the intersection of Kennedy Memorial Drive to the bridge over Brandy Creek in the vicinity of Sheep Camp within 20 feet of the edge of the improved and maintained portion of the roadway.
- That spur road accessing the Brandy Creek Falls trailhead from its intersection with the Shasta Bally Road, to the defined terminus, within 20 feet of the edge of the maintained and improved roadway.
- South Shore Drive at all points within 20 feet of the edge of the developed and improved roadway.

Roads Open to Public Access - Pursuant to Defined Restrictions, designated in RED, on the map attached to and made a part of this document {Appendix G}:

All paved roadways within the Oak Bottom Recreational Complex, subject to public use and area closure restrictions contained within section 1.5(f) - above.

All paved and improved unpaved roadways and parking areas, within traffic control barriers within the Whiskey Creek Group Picnic Area, subject to authorized access by valid permit holders. (CLOSED DUE TO CARR FIRE)

Public access along the Shasta Bally Road, from the bridge over Brandy Creek in the vicinity of Sheep Camp to the summit of Shasta Bally is permitted. Said road shall be designated as closed each year after ~~December 4~~ November 1 and will remain closed until April 1 or until weather conditions and park resources permit its reopening in the spring of each year.

Public access along the unpaved portions of Crystal Creek Road, from the vicinity of the Crystal Creek Regional Boys Camp to the intersection with the County Line Road is permitted. Said road shall be designated as closed each year after ~~December 4~~ November 1 and will remain closed until April 1 or weather conditions and park resources permit its reopening in the spring of each year.

Public access along the Mill Creek Road, from the intersection at Carr Powerhouse Road, to the designated terminus is permitted. Said road shall be designated as closed

each year after November 1 and will remain closed until April 1 or weather conditions and park resources permit its reopening in the spring of each year.

The paved roadways and parking areas within the Brandy Creek Beach and Picnic Area recreation complex. Said road shall be designated as closed each year after November 1 and will remain closed until May 1 or weather conditions and park resources permit its reopening in the spring of each year.

Administrative Roads Closed to Public Access by Motor Vehicle, accessible to authorized vehicles ONLY, designated in BLUE on the map attached and made a part of this document (Appendix G):

Defined as roads formally constructed and maintained, that are so designated, may be used for public safety emergencies, law enforcement, firefighting and maintenance, repair and construction of facilities, power lines and other infrastructure within Whiskeytown NRA.

Roads specifically so designated are:

That roadway leading from Crystal Creek Road, through the tailings area to the US Bureau of Reclamation tunnel portal and gate structure.

The spur road leading from Mill Creek Road to Boulder Creek Falls.

The roadway leading from SR299W at (Mile 11.5) Funderberg Flats to Whiskeytown Lake.

The roadway leading from "Panther Gap" on Peltier Valley Road, over the summit of Monarch Mountain, to Kennedy Memorial Drive. The roadway leading from "Panther Gap" on Peltier Valley Road, over the summit of Monarch Mountain, to Kennedy Memorial Drive.

The roadway leading from Kennedy Memorial Drive to the base of Whiskeytown Dam and "Dike #1".

The roadway leading along the Shasta Divide, from the intersection with SR299W to the Mount Shasta Mine Loop

All roads within New York Gulch, north of a point 100 feet from the centerline of SR299W.

All roads north and west of Highway 299 to the Oak Bottom sewage treatment spray field access road.

Those roads leading over the surface above and adjacent to the Clear Creek Water District pipeline in the vicinity of Salt Gulch, from a point at the southern perimeter of Horse Camp to a point 100 feet north of the intersection of the pipeline right-of-way at Mule Town Road.

All roadways connecting to SR299W at Bull Gulch, north to the Whiskeytown NRA Boundary, including all access to the Pacific Gas and Electric power line right-of-way.

All roadways in Slate Gulch from the PG&E right of way north to the Whiskeytown NRA Boundary, including all access to the Pacific Gas and Electric power line right-of-way.

All roadways leading over the Shasta Divide ridge, from a point 100 feet from the centerline of SR299W to points immediately adjacent to Paige Bar road near Whiskeytown Dam, the Shasta Mine Loop Trail Head parking area and Mule Town Road.

All roadways leading from a point at the south of the lake access parking area between Whiskeytown Dam and Dike #1 to the base of Whiskeytown Dam and the Western Area Power Authority power lines.

All roadways leading east and north from a point 30 feet from the centerline of Peltier Valley Road over Monarch Mountain to a point 30 feet from the centerline of South Shore Drive.

All roadways leading from a point at the southern perimeter of the Cal-Trans materials storage area at "Funderberg Flats" near SR299W mile 11.5 to Whiskeytown Lake.

All roadways leading from a point at the eastern perimeter of the Tower Historic District Trail Head to Building 515 and the intersection of the Building 515 access road with Merry Mountain Road.

Public access from Shasta Bally Road to County Line Road crossing over Crystal Creek, commonly known as "the Queen Mary area" is no longer a road.

All roadways leading to and within the Boulder Creek drainage from a point adjacent to the intersection of the remnant Boulder Creek Road at South Shore Drive to its intersection with the Mill Creek Road.

Administrative Roads Closed to All Public Use - designated In YELLOW on the map attached and made a part of this document (Appendix G)

The roads leading to Buildings 324, 318, and 321.

The Bureau of Reclamation roads providing access to the penstocks near Carr Powerhouse.

Roads leading to private residences within the NPS boundary, except for landowners and guests.

The roads within the Headquarters compound.

The roads immediately below Whiskeytown Dam.

The roads leading to Oak Bottom and Brandy Creek Water Treatment Facilities.

The roads between Kanaka Peak and South Fork Peak.

All other areas, including those with naturally occurring or man-made passages where motor vehicles might physically travel and further including all previously designated travel routes, are closed to use and access by motor vehicles.

Closures to motor vehicle access do not necessarily preclude access by foot, horseback or bicycle. Refer to SECTIONS 1.5, 2.16 and 4.30, of this document.

(b) Routes and areas for off-road vehicle use are provided for in section 7

- NONE

(c)(1) Track-laying motor vehicles, or other motor vehicles equipped with a similar traction device may be operated on the following routes under the terms and conditions noted:

- Pursuant to emergency as determined by the Superintendent or his/her designee, or a permit issued by the Superintendent.

36 CFR §4.11 - VEHICLE LOAD, WEIGHT AND SIZE LIMITS

(a) The following load, weight and size limits, which are more restrictive than State law, apply to the roads indicated under the terms and conditions, and/or under permit as noted:

- None

36 CFR §4.21 - SPEED LIMITS

(b) The following speed limits are established for the routes/roads indicated:

- The maximum speed limit on paved park roads is 35 mph unless otherwise posted.
- The maximum speed limit on graded park roads is 25 mph unless otherwise posted.
- The speed limit for bicycles on all designated routes (trails) is 15 mph and 5 mph around blind curves on all park trails opened to bicycles.

36 CFR §4.30 – BICYCLES (Appendix L)

(b) Administrative Roads

- All except those in closed areas

(d) Existing Trails

All designated trails within Whiskeytown Unit are open for use by bicycles and e-bikes, except for the following:

- All portions of the "Shasta Divide Trail", between Kennedy Memorial Drive and Whiskeytown Lake.
- All portions of the Davis Gulch Trail between the trailheads at Kennedy Memorial Drive and the Brandy Creek Day Use Area.
- All portions of the Crystal Creek Canal Trail.
- James Carr Trail to Whiskeytown Falls (from Mill Creek Trail junction to the falls).

(h)(4) Riding a bicycle abreast of another rider is allowed on the following routes:

- All unpaved roadways
- Paved access roads, where such activity does not interfere with the safe and orderly flow of traffic.

(i)(1) Electric Bicycles:

- Use of Class 1 electric bicycles on all designated trails open to biking, park roads, and administrative roads not within otherwise closed areas
- Use of Class 2 and Class 3 electric bicycles are permitted on park roads

On September 24, 2021, the Superintendent designated park roads and parking areas as open to Class 1, 2, and 3 electric bicycles using the discretionary authority given to the Superintendent under 36 CFR 4.30(i). Allowing all classes of electric bicycles on public roads and in parking areas will create new opportunities for recreation and access within the park. It will not create any adverse impacts to park visitors, resources or values due to the existing use of these locations by motor vehicles and bicycles. This action is covered by the categorical exclusion 3.3.D.2 in the

NPS NEPA Handbook. On September 24, 2021, the Superintendent designated trails and administrative roads as open to Class 1 electric bicycles using the discretionary authority given to the Superintendent under 36 CFR 4.30(i). Allowing Class 1 electric bicycles on designated administrative roads and trails will create new opportunities for recreation and access within the park, and provide additional benefits, including protecting visitor safety by keeping speeds below 20 miles per hour. The NPS expects the following impacts on park visitors, resources or values wear to trail tread at the equivalent rate as bicycles. This action is covered by categorical exclusion 3.3.D.2 in the NPS NEPA Handbook. (See Appendix L for a map of designated administrative roads and trails)

36 CFR §4.31 - HITCHHIKING

Hitchhiking or soliciting transportation is prohibited except in the following designated areas and conditions:

- Along HWY 299 in accordance with applicable state laws

36 CFR §7.91 SPECIAL REGULATIONS

(c) Powerless flight

The use of devices designed to carry persons through the air in powerless flight is allowed at times and locations designated by the superintendent, pursuant to the terms and conditions of a permit.

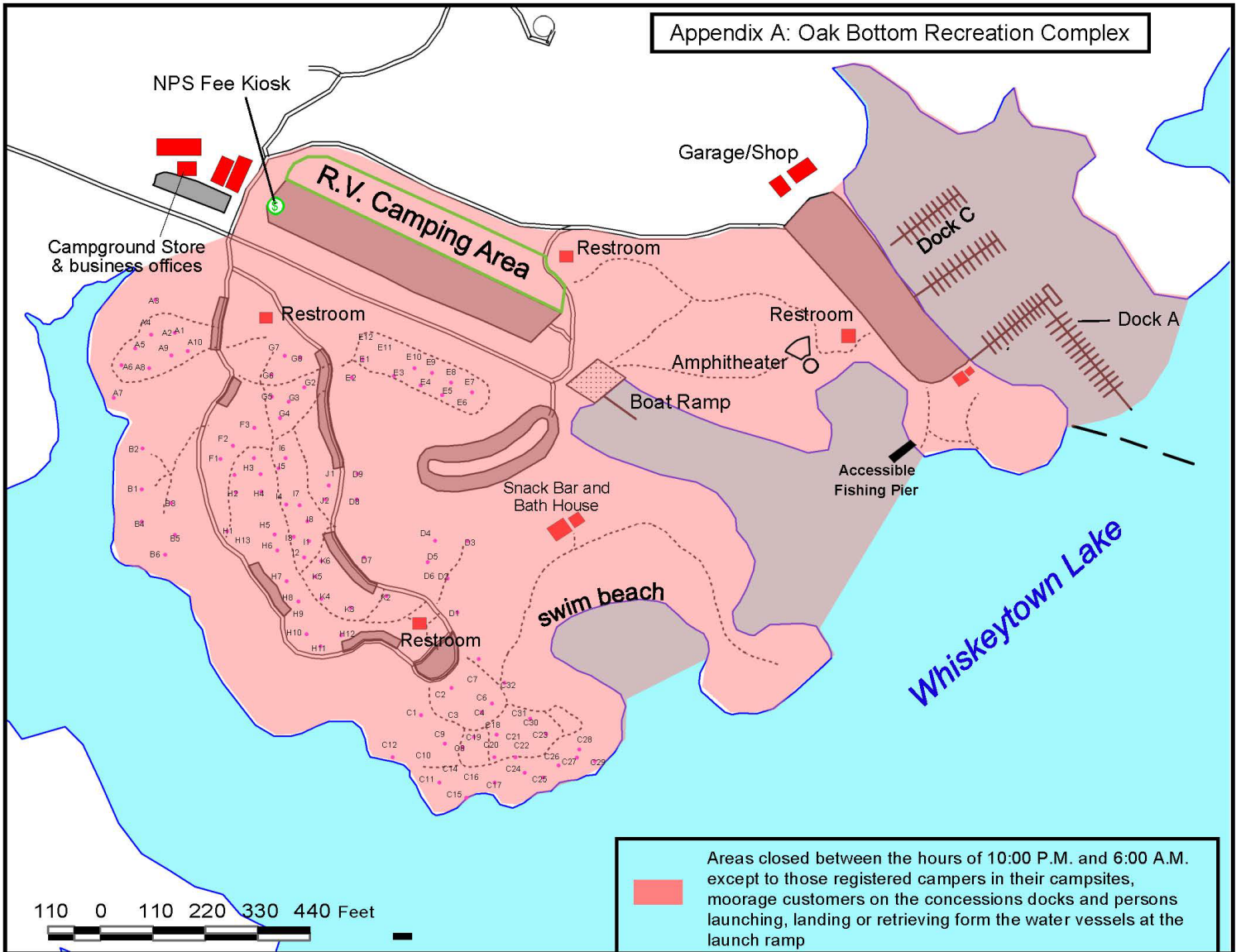
(d)(2)(i) Gold Panning

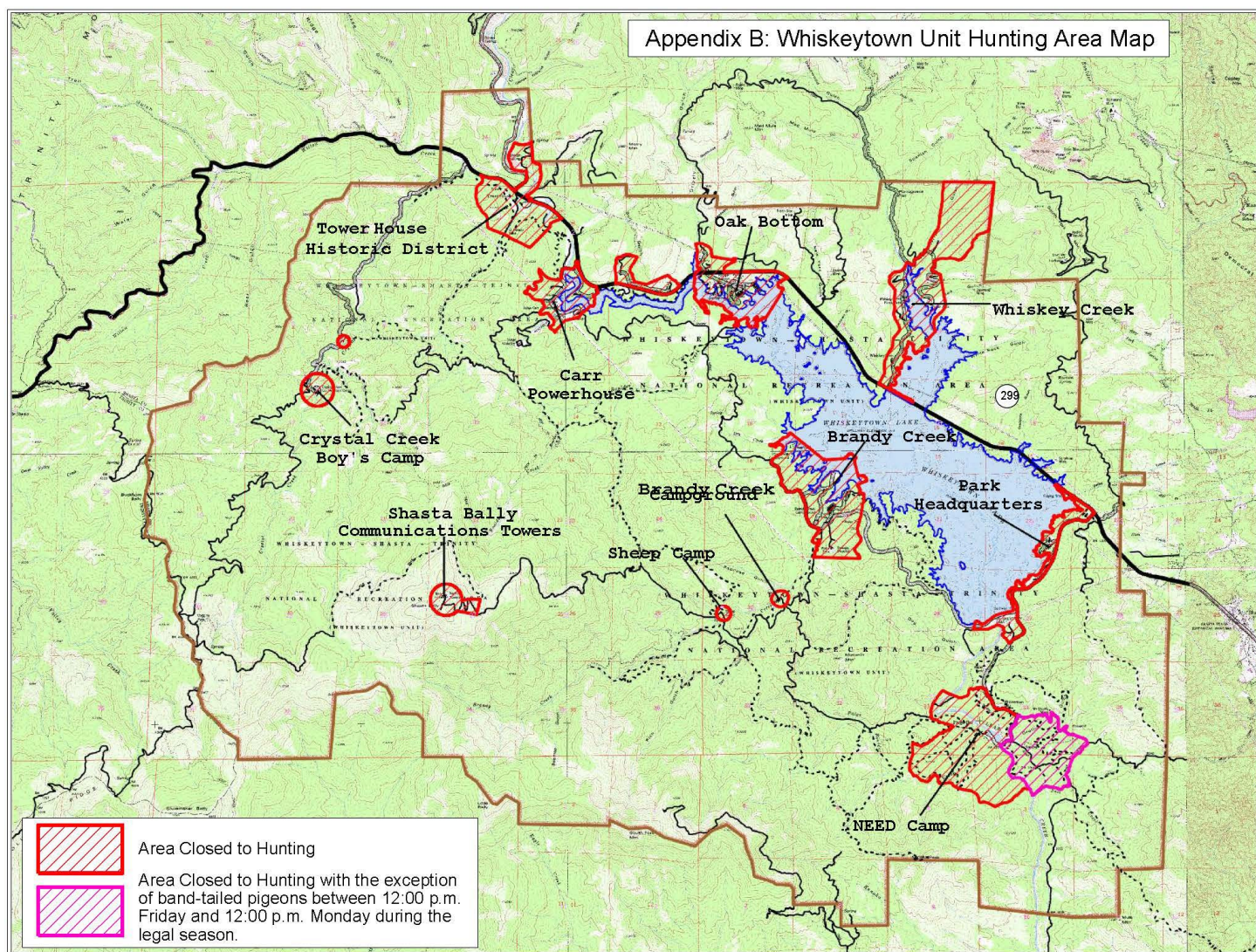
The following streams, or portions thereof, designated closed to gold panning:

- Gold panning is prohibited along Clear Creek from the mouth of Paige Bar
- Creek to the Whiskeytown Environmental School Camp (also known as N.E.E.D. Camp) access road bridge over Clear Creek.

This restriction is necessary to keep park visitors from disturbing educational programs at Whiskeytown Environmental School Camp (also known as N.E.E.D. Camp).

Appendix A: Oak Bottom Recreation Complex

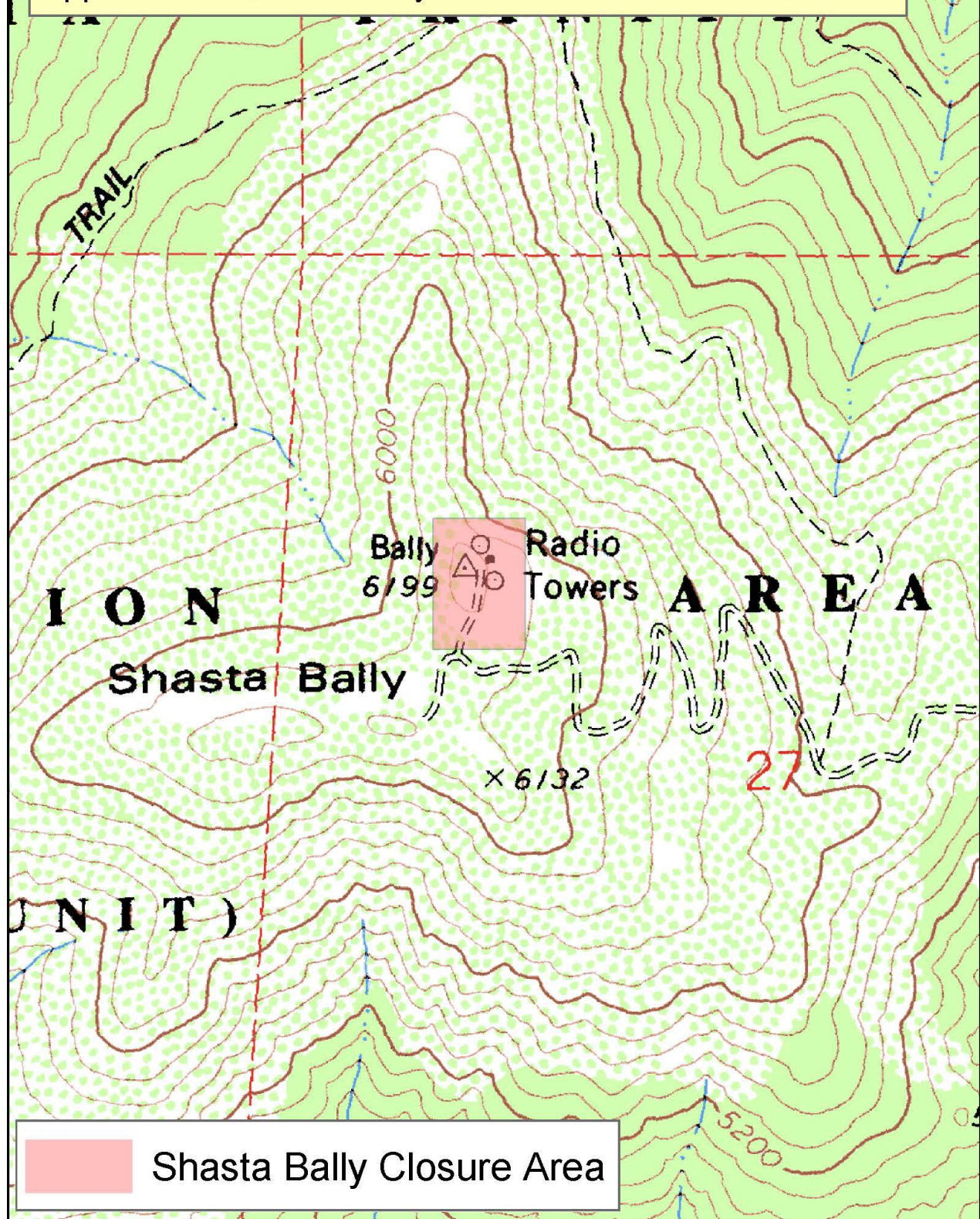


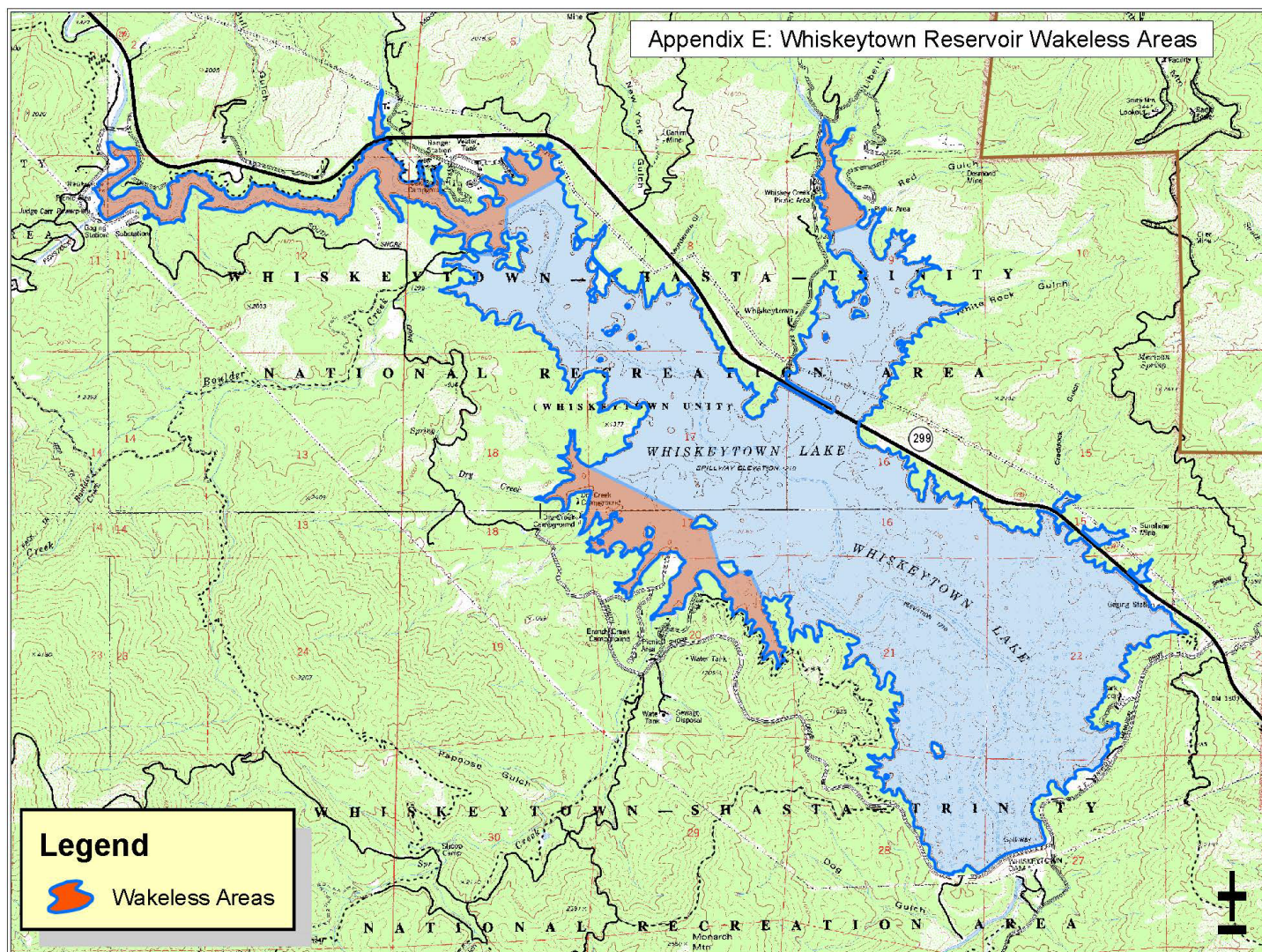


Appendix C: Closure Area Near Government Dock

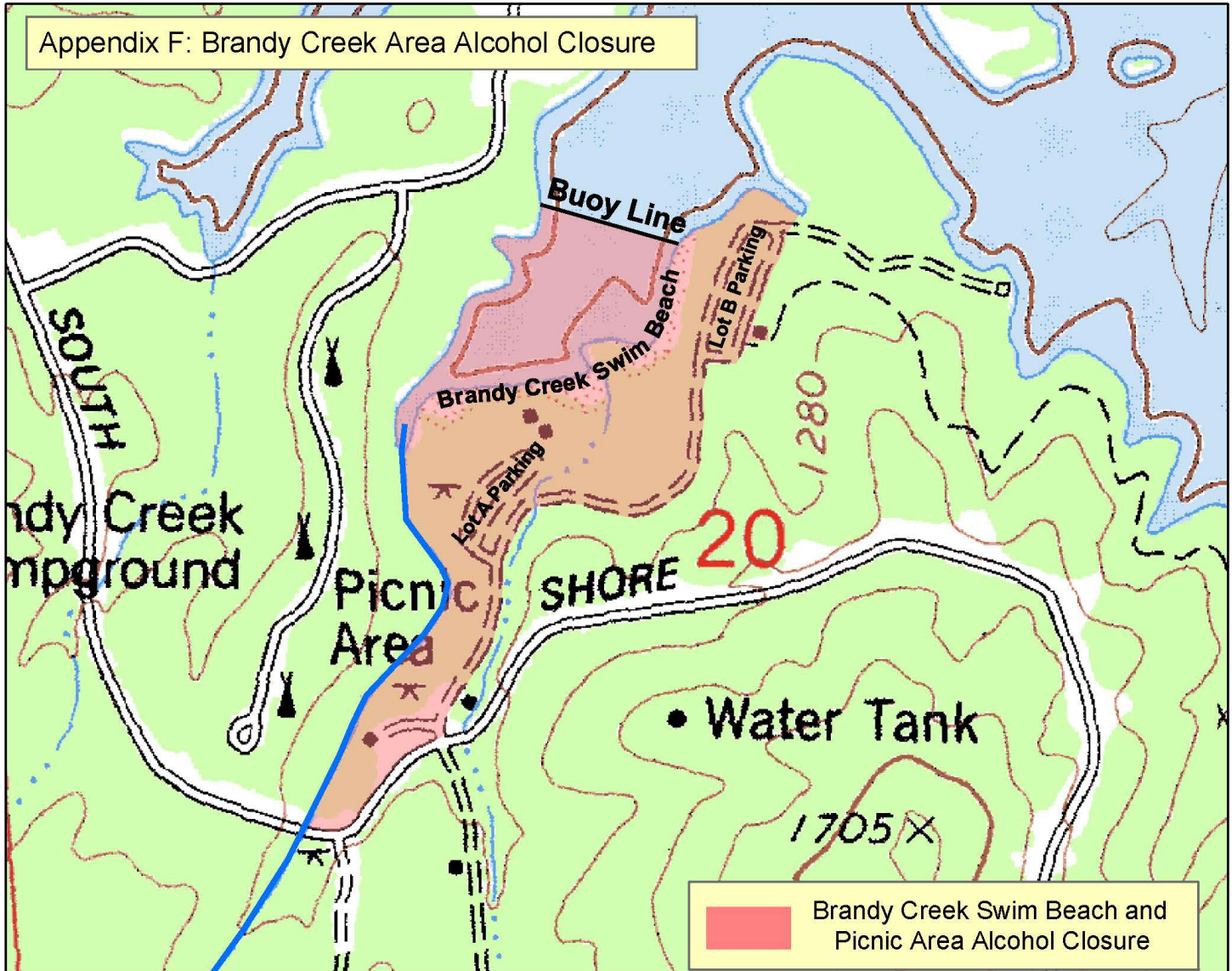


Appendix D: Shasta Bally Tele-Communications Closure

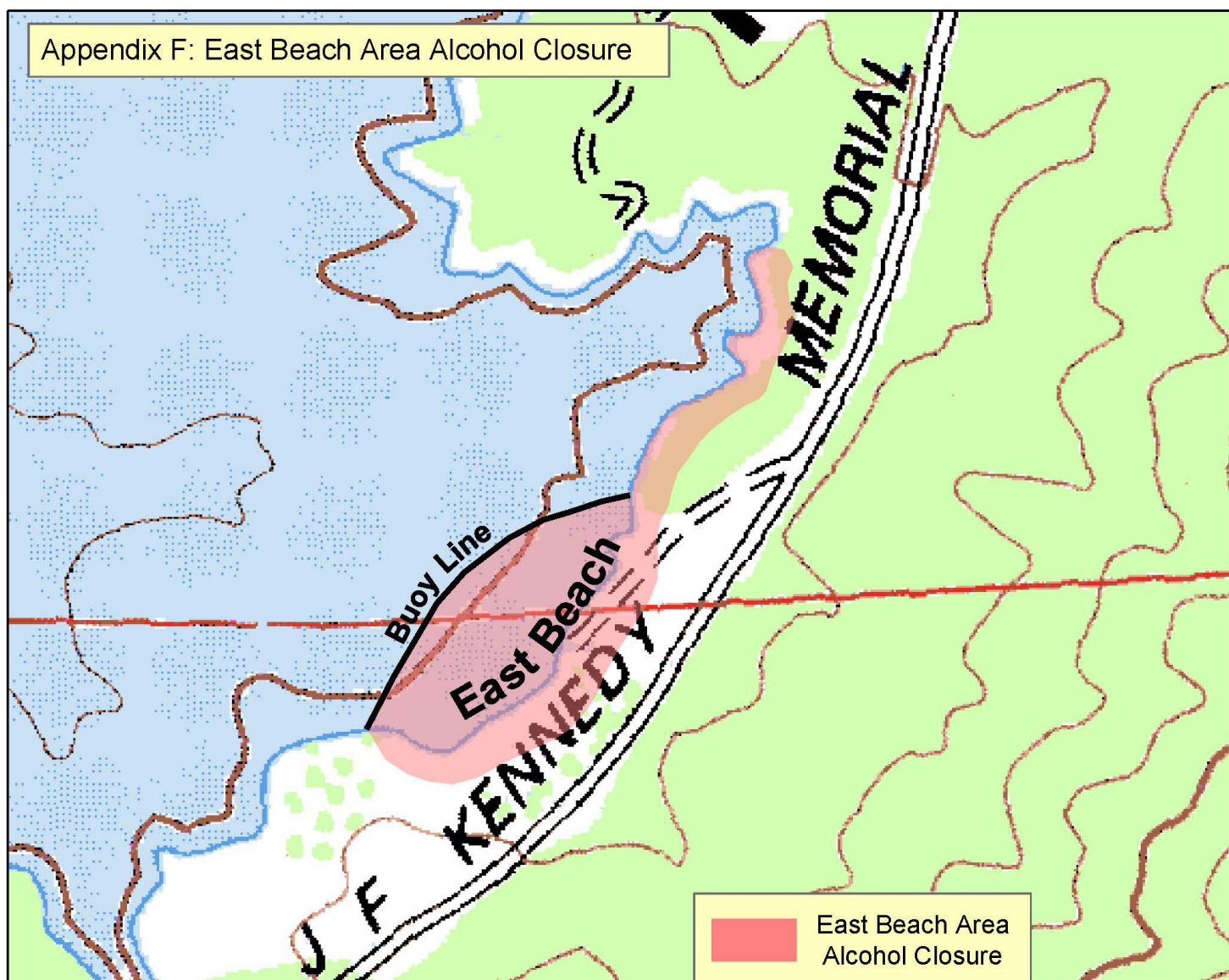


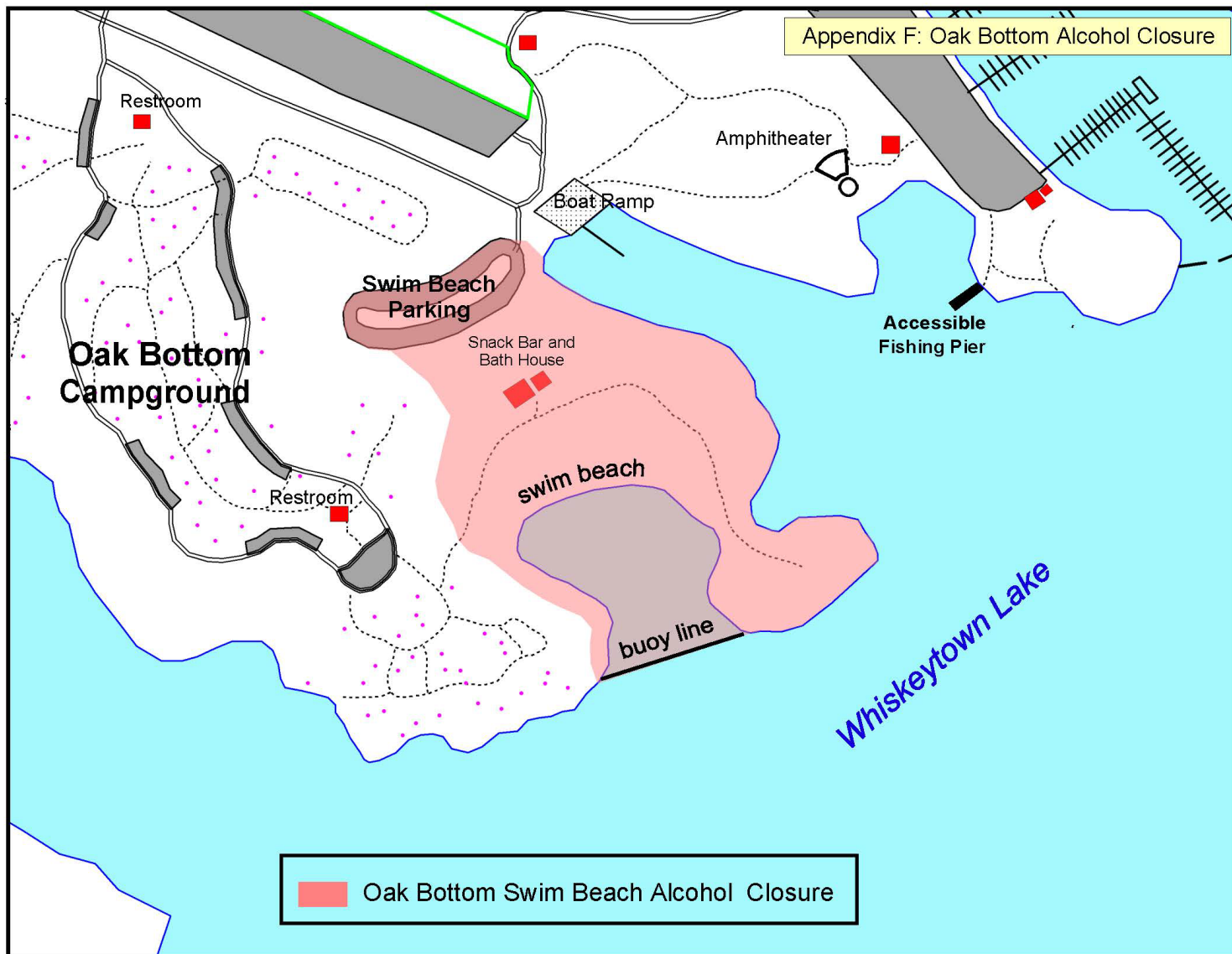


Appendix F: Brandy Creek Area Alcohol Closure

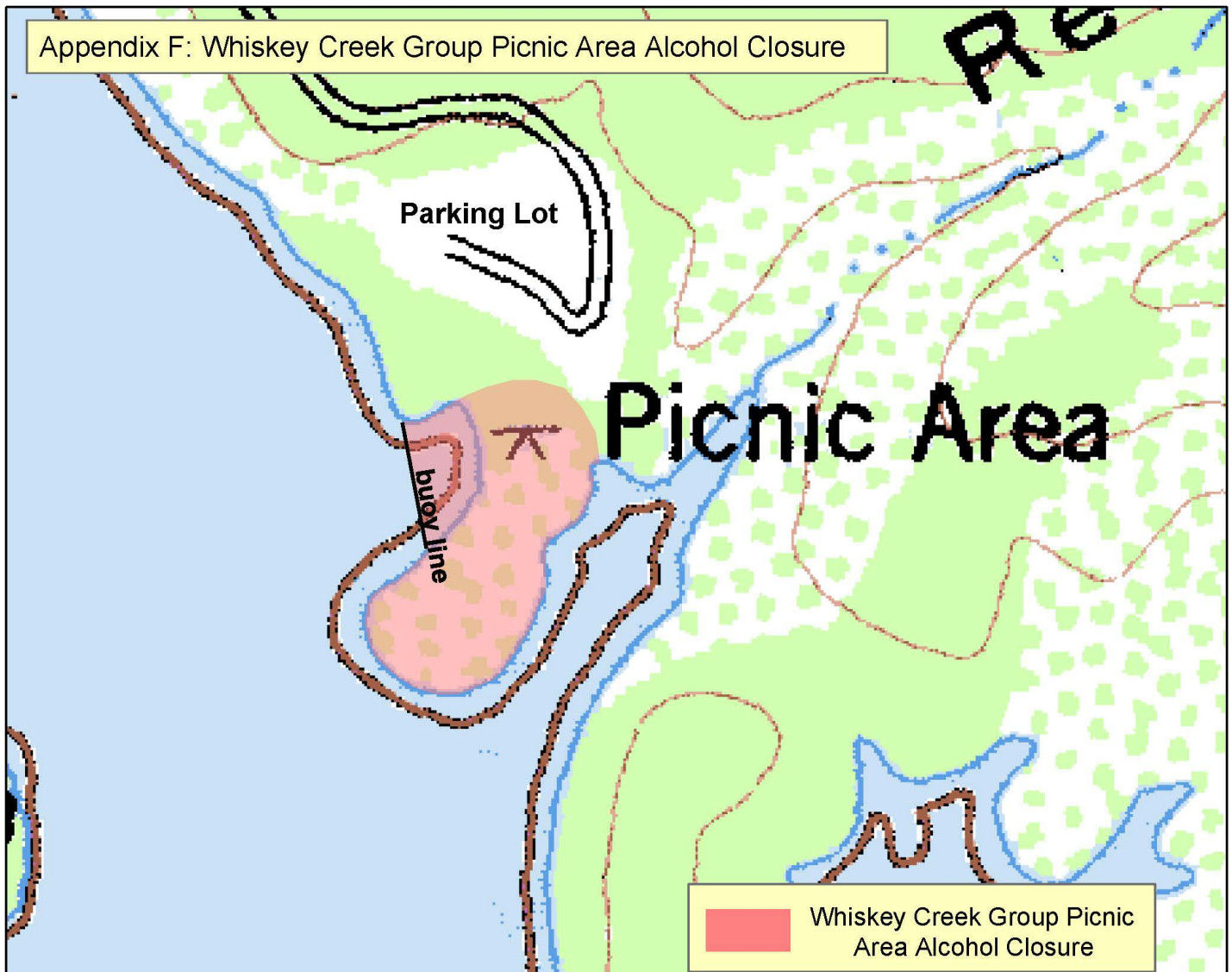


Appendix F: East Beach Area Alcohol Closure

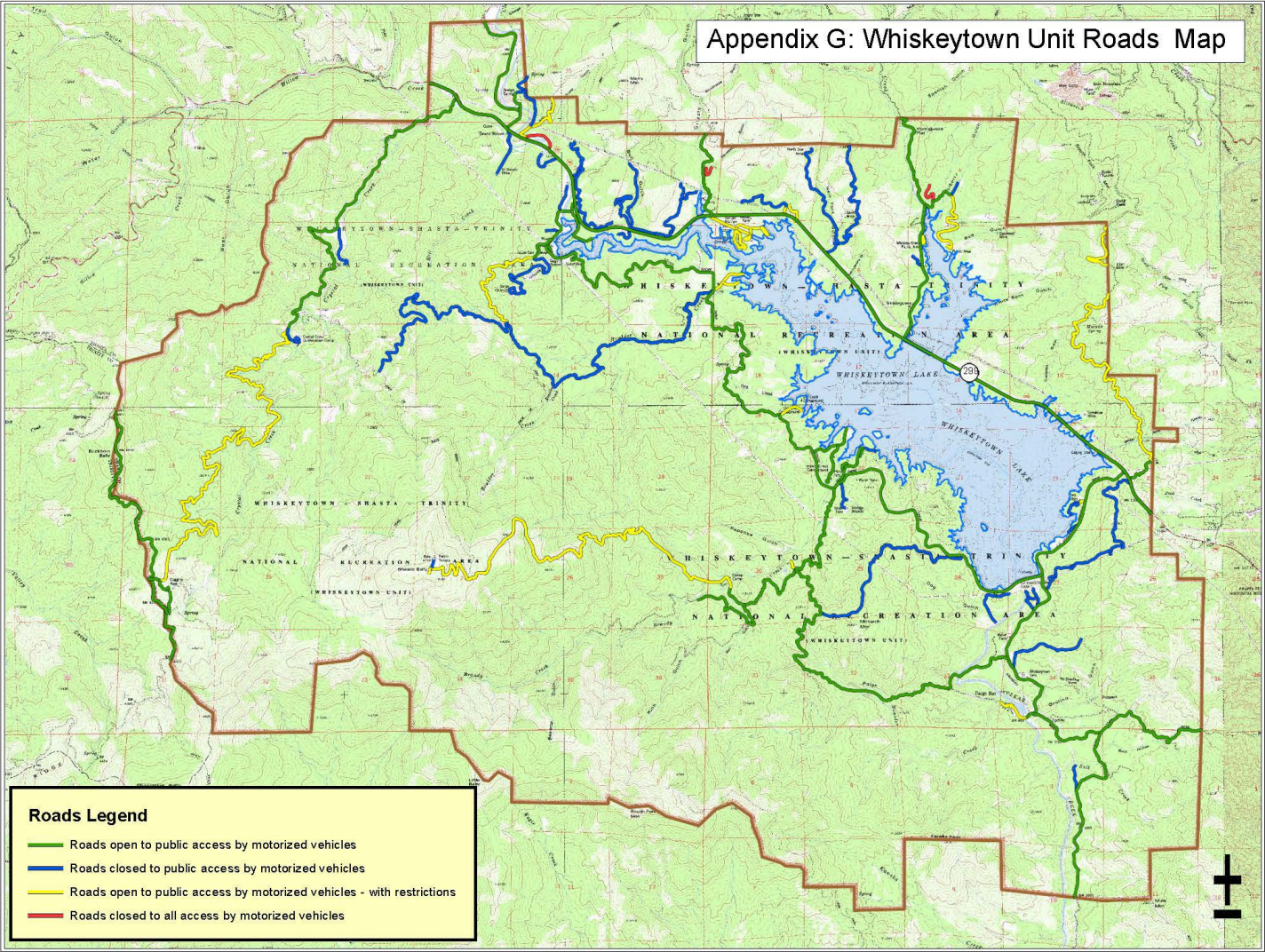




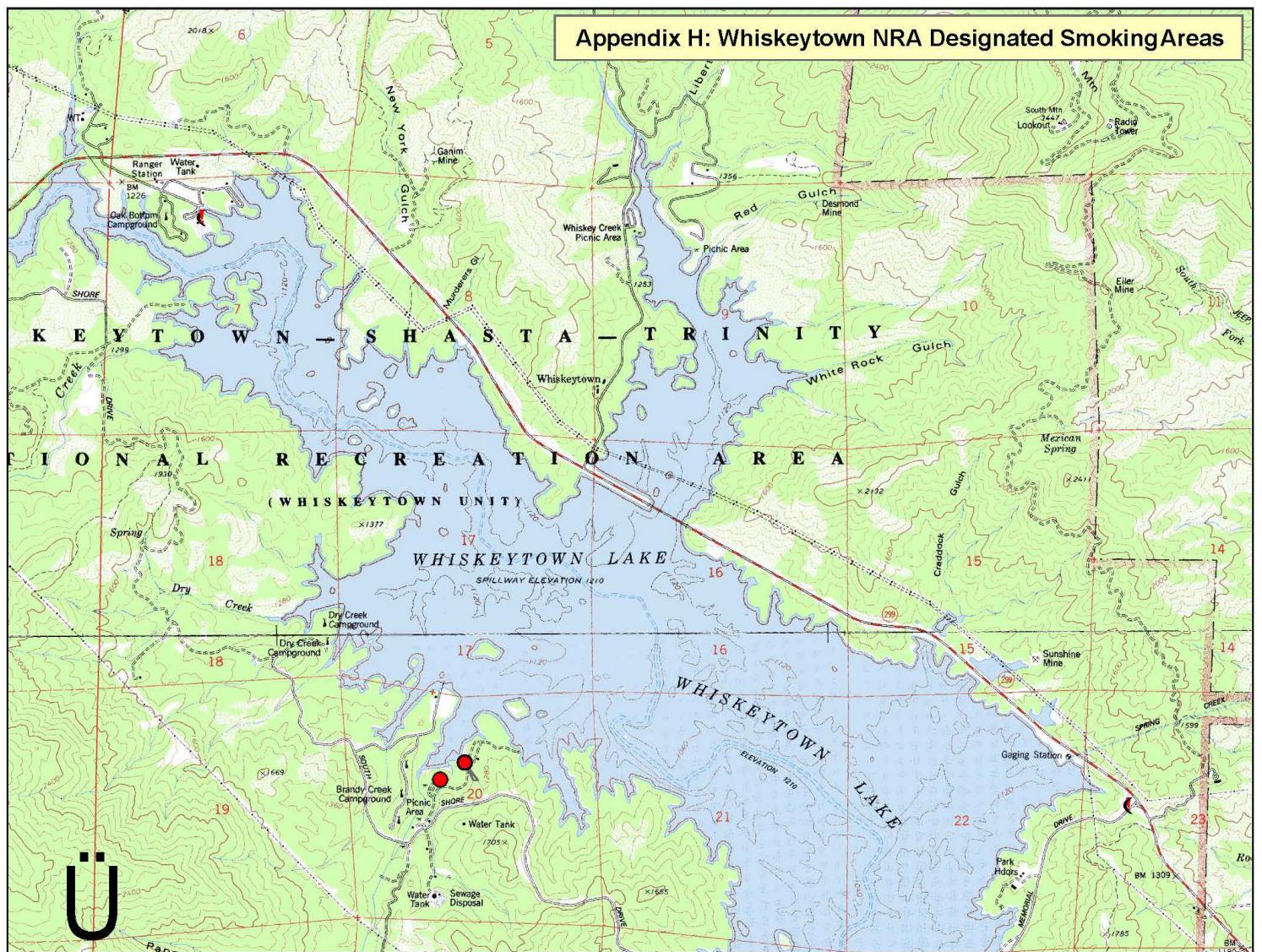
Appendix F: Whiskey Creek Group Picnic Area Alcohol Closure



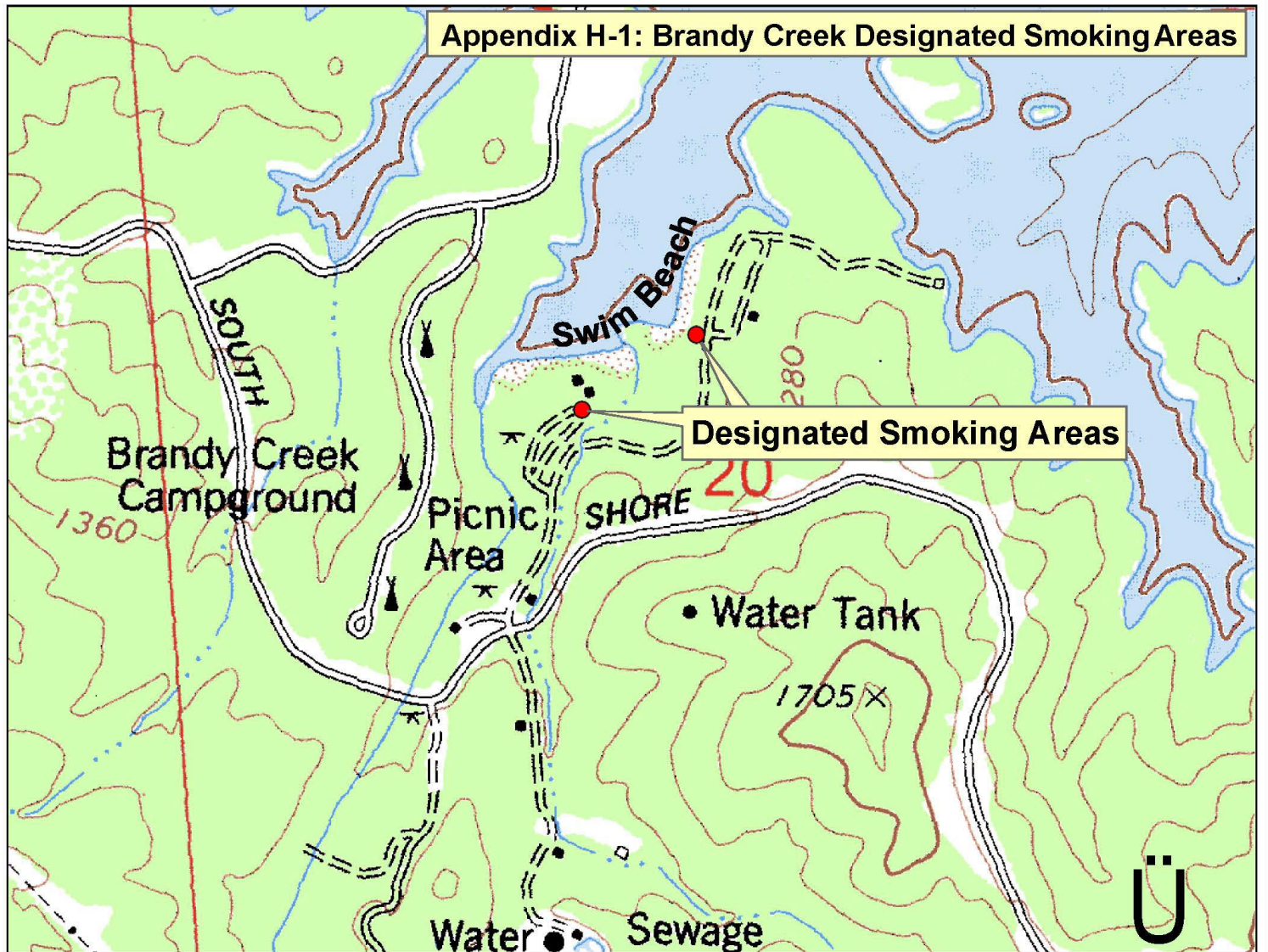
Appendix G: Whiskeytown Unit Roads Map



Appendix H: Whiskeytown NRA Designated Smoking Areas



Appendix H-1: Brandy Creek Designated Smoking Areas



Appendix H-2: Oak Bottom Designated Smoking Area

