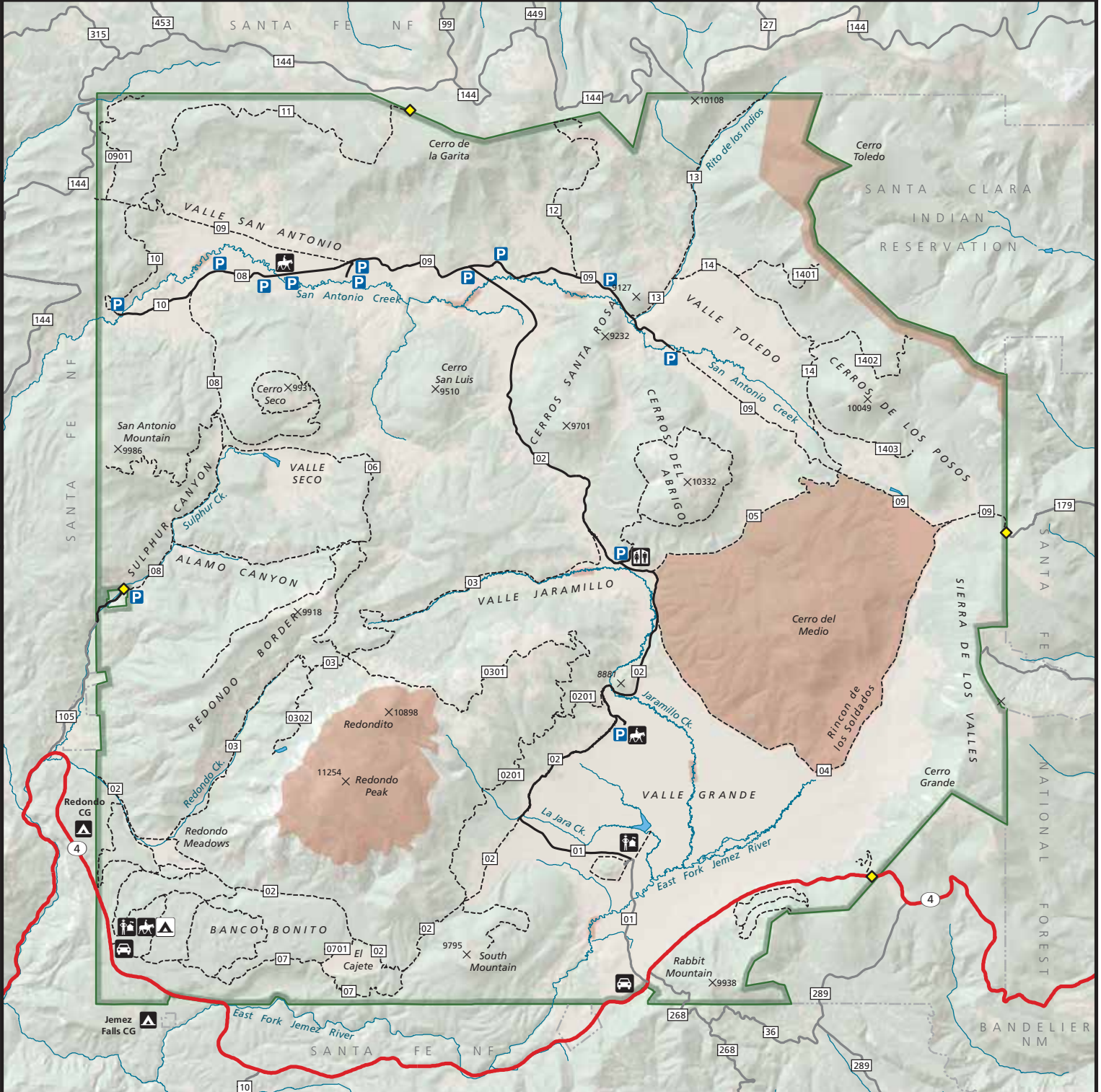


Valles Caldera National Preserve

National Park Service
U.S. Department of the Interior



- Visitor Contact Station‡
- Horse Trailer Parking
- Vehicle Entrance
- Restroom
- Primitive Campground
- Developed Campground
- Parking

- Remote Access Point
- Hiking/Biking/Equestrian Trail
- Backcountry Vehicle Route (permit required)*
- Other Roads
- Restricted Area (no public access)

Motorized Vehicles Permitted on Designated Routes Only

Parking Allowed Along Backcountry Vehicle Route Provided Vehicles Are Parked Safely & Not Blocking Access

‡ Restrooms and parking available
* open for hiking/biking/equestrian use

