

National Park Service  
U.S. Department of the Interior  
Tule Springs Fossil Beds National Monument  
Superintendent's Compendium  
Approved on 12/5/2025  
By Amanda D. Rowland, Superintendent

In accordance with regulations and the delegated authority provided in Title 36, Code of Federal Regulations ("36 CFR"), Chapter 1, Parts 1-7, authorized by Title 54 United States Code, Section 100751, the following compendium actions apply to all lands administered by the National Park Service, within the boundaries of Tule Springs Fossil Beds National Monument. Unless otherwise stated, these regulatory provisions apply in addition to the requirements contained in 36 CFR, Chapter 1, Parts 1-7. Violating any provision in this Compendium may result in criminal penalties under 36 CFR 1.3.

The compendium actions in this document apply in addition to all other laws that apply to lands and waters administered by the NPS within the boundaries of Tule Springs Fossil Beds National Monument. These include:

- Regulations in 36 CFR and other CFR titles such as Title 43, which contains regulations that apply on public lands administered by the Department of the Interior. The current version of the CFR can be found at [www.ecfr.gov](http://www.ecfr.gov). Click on "Title 36" and then "Chapter 1" to access 36 CFR.
- Statutes codified in U.S. Code, in particular provisions in Titles 16 and 54.

This Compendium is organized by the sections in 36 CFR that give the Superintendent discretionary authority to take the compendium action. Written determinations, which explain the reasoning behind the Superintendent's use of discretionary authority, as required by Section 1.5(c), appear in this document identified by italicized print.

Please contact Amanda Rowland, [TUSK\\_Superintendent@nps.gov](mailto:TUSK_Superintendent@nps.gov), if you have any questions or comments about the Superintendent's compendium.

Tule Springs Fossil Beds National Monument  
601 Nevada Way  
Boulder City, NV 89005  
ATTN: Superintendent

NPS regulations in 36 CFR 1.4 define certain terms that are used in 36 CFR. Other sections in 36 CFR may define terms that are used in those sections. To the extent any terms defined in the CFR are used in this Compendium, those definitions apply. In addition to terms defined in the CFR, the following term used in this Compendium are defined as follows:

Uncrewed Aircraft: A device that is used or intended to be used for flight without the possibility of direct human intervention from within or on the device, and the associated operational elements and components that are required for the pilot or system operator in command to operate or control the device (such as cameras, sensors, communication links). This term includes all types of devices that meet this definition (e.g., model airplanes, quadcopters, and drones) that are used for any purpose, including for recreation or commerce.

E-bike: A two- or three-wheeled cycle with fully operable pedals and an electric motor of less than 750 watts (1 horse power).

## 36 CFR 1.5 – CLOSURES AND PUBLIC USE LIMITS.

### 36 CFR 1.5(a)(1) – Visiting hours, public use limits and closures

#### Visiting Hours

- Tule Springs Fossil Beds National Monument (TUSK) is open to the public during hours of daylight only, year-round, with the following exceptions; Use of the paved county road known as Corn Creek Road, Landy Street., and North Decatur Boulevard.

*For the purpose of public safety and protection of sensitive natural and cultural resources, including non-renewable paleontological and archeological resources which occur at or near the surface.*

#### Closures

- The park is closed to motor vehicles except:
  - On Alamo Road, Corn Creek Road, and North Decatur Boulevard (See attached Map). Alamo Road is closed 1 hour after sunset to 1 hour before sunset throughout the year.
  - Any administrative use as determined by the park Superintendent.
  - Any use of the right of way corridors by authorized entities under permit.

*Entering on and off of U.S. Highway 95 from other than the above listed roadways is a safety risk due to the fact that passing motorists will be traveling at highway speeds and would not be expecting a vehicle to slow down to exit the highway or suddenly pull out in from of them to enter the highway. The fragile condition of continually exposed paleontological resources can be damaged and/or destroyed by motor vehicle traffic off of the approved roadways. The monument provides habitat to sensitive wildlife and plant species which are susceptible to injury or morbidity by off road vehicle use.*

- Uncrewed Aircraft Systems (UAS) also known as drones are prohibited. The launching, landing or operating of an unmanned aircraft from or on lands and waters administered by the National Park Service within the boundaries of Tule Springs Fossil Beds NM is prohibited except for government research purposes and as approved in writing by the Superintendent.

*This closure is to prevent possible conflicts, maintain public health and safety, and prevent any unacceptable impacts on park resources and values.*

36 CFR 1.5(a)(2)- Designate Areas for a specific use or activity or impose conditions or restrictions on a use or activity.

- Filming, still photography, and audio recording activity may require a permit, consistent with 54 U.S.C. 100905.
  - Filming, still photography, and audio recording activity that occurs in closed areas, requires exclusive use of a site or area, or involves a set or staging equipment other than handheld equipment (such as a tripod, monopod, and handheld lighting equipment) requires a permit, unless the activity is affiliated with an activity or event that has been allowed under a written authorization, such as a special use permit.
  - Filming, still photography, and audio recording that involves more than eight individuals requires a permit, unless the NPS has specifically notified an individual or group that a permit is not required, or if the activity is affiliated with an activity or event that has been allowed under a written authorization, such as a special use permit.
  - If a permit is required for the reasons stated above, or if the NPS otherwise determines and then notifies an individual or group that a permit is required for a filming, still photography, or audio recording activity, then engaging in that activity without a permit is prohibited. Violating a term or condition of a permit issued by the NPS for a filming, still photography, or audio recording activity is prohibited, and may result in the suspension or revocation of the permit, in addition to any penalties that may apply under 36 CFR 1.3.

**36 CFR 1.6 ACTIVITIES THAT REQUIRE A PERMIT**

**36 CFR 1.6(f) – Activities that require a permit**

The following is a compilation of those activities for which a permit from the Superintendent is required:

- Carry or possess a weapon, trap, or net as identified in this section. None of the provisions in this section or any regulation in section 2.4 of 36 CFR may be enforced to prohibit an individual from possessing a firearm, including an assembled or functional firearm if the individual is not otherwise prohibited by law from possessing the firearm; and the possession of the firearm is in compliance with the law of the state in which the park is located. 36 CFR 2.4(e)
- Specimen collection for research purposes. (Take plant, fish, wildlife, rocks or minerals). 36 CFR 2.5
- Audio Disturbances 36 CFR 2.12
- Operating a chainsaw in developed areas. 36 CFR 2.12(a)2
- Operation of any type of portable motor or engine, or device powered by a portable motor or engine in non-developed areas. 36 CFR 2.12(a)3
- Operation of a public address system in connection with a public gathering or special event for which a permit has been issued pursuant to §2.50 or §2.51. 36 CFR 2.12(a) 4

- Delivery or retrieval of a person or object by parachute, helicopter or other airborne means. 36 CFR 2.17
- Removal of a downed aircraft. 36 CFR 2.17(c)1
- The following special recreation activities (per 36 CFR Part 71.10): Sporting races or events, Other special events. 36 CFR 2.23(b)
- Soliciting or demanding gifts, money goods or services (Pursuant to the terms and conditions of a permit issued under §2.50, §2.51 or §2.52) 36 CFR 2.37
- Explosives: (a) Use, possess, store, transport explosives, blasting agents, (b) Use of and/or possession of fireworks. 36 CFR 2.38
- Conduct a sports event, pageant, regatta, public spectator attraction, entertainment, ceremony, and similar events. 36 CFR 2.50(a)
- Public assemblies, meetings, gatherings, demonstrations, parades and other public expressions of views. 36 CFR 2.51(a)
- Sale or distribution of printed matter. 36 CFR 2.52(c)
- Livestock use 36 CFR 2.60(b)
- Residing on federal lands 36 CFR 2.61(a)
- Memorialization: (a) Erection of monuments (Requires approval from the Director), (b) Scattering ashes from human cremation 36 CFR 2.62(a)
- Advertisements - (Display, posting or distribution). 36 CFR 5.1
- Engaging in or soliciting any business 36 CFR 5.3
- Some filming, still photography, and audio recording (depends upon the facts and circumstances; contact the park for more information). 54 U.S.C. 100905.
- Use of commercial vehicles on park area roads (The Superintendent shall issue a permit to access private lands within or adjacent to the park when access is otherwise not available). 36 CFR 5.6(c)
- Construction of buildings, facilities, trails, roads, boat docks, path, structure, etc. 36 CFR 5.7
- Operation of a solid waste disposal site. 36 CFR 6.9

## 36 CFR 2.1 – PRESERVATION OF NATURAL, CULTURAL AND ARCHEOLOGICAL RESOURCES

### 36 CFR 2.1(b) - Hiking

## 36 CFR Part 2 – Resource Protection, Public Use, and Recreation

## 36 CFR 2.2 WILDLIFE PROTECTION

36 CFR 2.2(b)(2) – Hunting is not allowed in Tule Springs Fossil Beds National Monument.

36 CFR 2.2 (d) – Transporting of lawfully taken and properly tagged wildlife through the park is permitted.

36 CFR 2.2 (e) – All park areas are closed to viewing of wildlife with artificial light.

*To prevent impact to wildlife in its natural settings. Night vision devices are not artificial lights: however, infrared lighting/beams are considered artificial lights and are included in the prohibition.*

## 36 CFR 2.4 WEAPONS, TRAPS, AND NETS

36 CFR 2.4 (a)(2)(iii) Target practice is prohibited throughout the park.

- None of the provisions in this section or any regulation in section 2.4 of 36 CFR may be enforced to prohibit an individual from possessing a firearm, including an assembled or functional firearm if the individual is not otherwise prohibited by law from possessing the firearm; and the possession of the firearm is in compliance with the law of the state in which the park is located.
- 18 U.S.C. §930 prohibits the possession of firearms in “federal facilities”, which are defined as “buildings or parts thereof owned or leased by the federal government, where federal employees are regularly present for the purpose of performing their official duties.” These places are marked with signs at public entrances.

*The use of firearms is prohibited by law, and inconsistent with the purpose for which the National Monument was established. The use of firearms in a valley type environment also presents significant visitor safety issues. There are also significant environmental concerns with lead and trash.*

## 36 CFR 2.10 CAMPING AND FOOD STORAGE

- Camping is not permitted.

## 36 CFR 2.11 PICNICKING

- Picnicking is allowed during daylight hours.

## 36 CFR 2.13 FIRES

36 CFR 2.13 (a)(1) – Conditions on Lighting or Maintaining a Fire

A fire may be ignited and maintained only by using fuel sources designed and commonly used for warmth or the preparation of food, such as charcoal briquettes or natural firewood. Lighting or maintaining a fire with other materials including, but not limited to, flammable liquids, garbage, fireworks, plastics, aerosol canisters, batteries, or other manufactured or synthetic materials, is prohibited. The lighting or maintaining of fires is generally prohibited, except under the conditions as noted:

*This action is necessary for the maintenance of public health and safety, protection of environmental or scenic values, protection of natural or cultural resources, and the implementation of management responsibilities. Materials other than approved combustibles – especially fire accelerants and substances prone to wind transport or explosion – creates serious risks when used to light or maintain fires. These combustibles can ignite or spread wildfires that directly threaten people and valuable resources and assets. The burning of manufactured or synthetic materials can contribute to air pollution, contaminate soil and water, and be toxic to humans and the environment. Less restrictive measures, such as an education campaign informing visitors of the risks of using certain materials to light or maintain a fire, would not be*

*commensurate with the substantial risks associated with those activities and could lead to adverse outcomes that might be prevented by establishing an enforceable condition.*

## 36 CFR 2.14 SANITATION AND REFUSE

- There are limited trash receptacles or facilities in TUSK. Visitors should apply “leave no trace” principles, and “pack it in, pack it out”.
- Conditions for the disposal, containerization, or carryout of human body waste have been established as follows:
  - There are no restroom facilities in the park. Visitors are responsible for proper disposal of human waste outside of the park.
  - The use of disposable bags or containers, which package human waste and render it safe for disposal as a solid waste, and which meet applicable state and federal regulations, are permitted for transport of human waste outside of the park.

## 36 CFR 2.15 PETS

36 CFR 2.15(a)(1) Leaving pets in vehicles with or without the windows open is prohibited

36 CFR 2.15(a)(5) Pet excrement must be disposed of in accordance with the following conditions:

- Pet excrement must be disposed by removal outside of the park or in designated waste containers.

## 36 CFR 2.16 HORSES AND PACK ANIMALS

- Horses and pack animals may be ridden only on existing roads, trails, and/or flood channels/washes;
- The use of loose hay or grain containing viable seeds as feed is prohibited.

## 36 CFR 2.50 SPECIAL EVENTS

- Sports events, pageants, public spectator attractions, entertainments, ceremonies, and similar events are allowed provided there is a meaningful association between the park and the events, and the observance contributes to visitor understanding of the significance of the park area, and a permit therefor has been issued by the Superintendent.

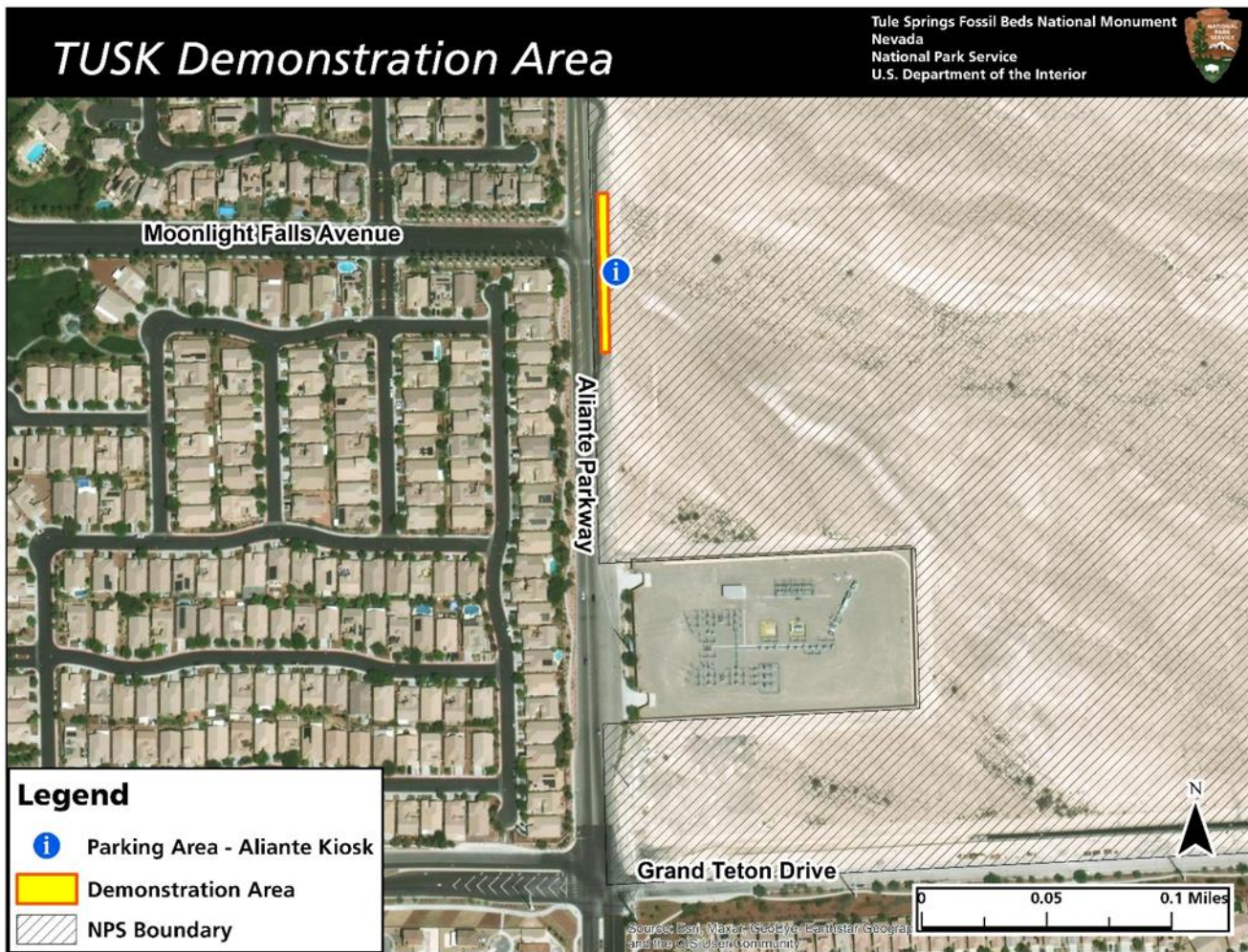
## 36 CFR 2.51 DEMONSTRATIONS

(b) Demonstrations of 25 people or less are allowed within the park areas designated as available under paragraph (c)(2). Demonstrations of more than 25 people are allowed within designated areas when the Superintendent has issued a permit for the activity.

(c)(2) The following locations are designated as available for demonstrations:

- The Superintendent has designated the Aliante Parking Lot as the designated demonstration





### 36 CFR 2.62 MEMORIALIZATION

- The installation of a monument, memorial, tablet, structure, or other commemorative installation in a park area without the authorization of the Director is prohibited.
- The scattering of human ashes from cremation is prohibited, except pursuant to the terms and conditions of a permit, or in the following areas and according to the following conditions:
  - a. The remains to be scattered must have been cremated and pulverized.
  - b. The scattering of remains by persons on the ground is to be performed at least 100 yards from any trail, road, developed facility, or body of water.
  - c. The scattering of remains from the air is prohibited.

### 36 CFR 4.10 TRAVEL ON PARK ROADS AND ROUTES

- Operating a motor vehicle off of designated roadways is prohibited.
- Only registered and “street legal” vehicles are allowed to operate on park roads.

### 36 CFR 4.21 SPEED LIMITS

(a), (b) The following speed limits are established for the routes / roads indicated:

- The speed limit is 15 mph throughout the monument unless otherwise signed.
- Corn Creek Road and North Decatur Boulevard speed limits are 45 mph.

### 36 CFR 4.30 - BICYCLES

- Bicycle use is allowed on existing roads, parking areas, and trails. Bicyclists should yield to both hikers and horses; Hikers should yield to horses.

#### 36 CFR 4.30(i) – Electric bicycles.

- Class 1 electric bicycles are allowed in the locations where traditional bicycles are also allowed.

*Allowing electric bicycles on roads and parking areas will not create new, adverse impacts to resources or visitors because those locations are already used by motor vehicles and traditional bicycles. Electric bicycles provide a recreational opportunity for visitors who want to ride a bicycle but might not otherwise because of physical fitness, age, or convenience, especially at high altitudes and on terrain with changing elevations. Class 3 electric bicycles, which allow the motor to assist pedaling up to 28 mph, would create unacceptable risks to visitor safety on roads and parking areas in the park due to potential conflicts with heavier and faster motor vehicles, and with other electric bicycles and traditional bicycles, which travel at slower speeds. Accidents that occur at higher speeds increase the risk of serious injury or death. The park resources have been extensively impacted by off road travel by vehicles and bicycles. Significant restoration work will be necessary in the future to mitigate resource damages.*

### 36 CFR 5 – COMMERCIAL AND PRIVATE OPERATIONS

#### 36 CFR 5.1 – Advertisements.

Commercial notices or advertisements shall not be displayed, posted, or distributed on federally owned or controlled lands within the park area unless written permission has been given by the Superintendent.

#### 36 CFR 5.3 BUSINESS OPERATIONS (COMMERCIAL USE AUTHORIZATION – CUA)

Engaging in or soliciting any business in park areas, except in accordance with the provisions of a permit, contract, or other written agreement with the United States, is prohibited.

Business operations within Tule Springs Fossil Beds National Monument must be authorized under a contract or permit.

The exceptions to the written authorization for all commercial visitor service operations requirement are as follows:

- Vehicle tow services are considered emergency vehicles and are on a rotational basis through the Interagency Communication Center.

**END**



