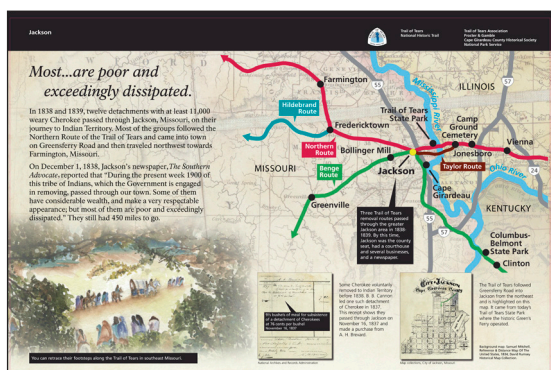
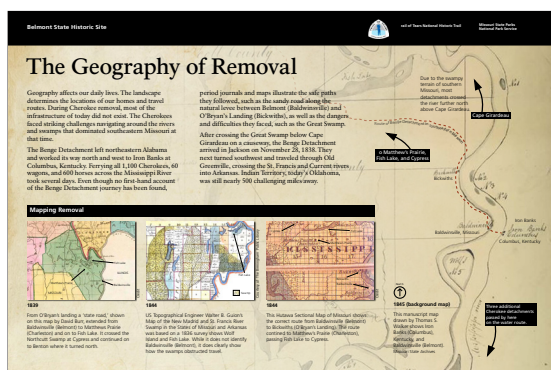




# Trail of Tears National Historic Trail

## Project Updates - Protection, Development, and Promotion

### Interpretation Update



- **EXHIBITS:** Seven wayside exhibits were installed at Trail of Tears State Park in Missouri: (1) how geography impacted route choices at Belmont, (2) how detachments acquired supplies along the route at Bollinger Mill, (3) a description of the scene of removal in Jackson, (4) understanding Bushyhead Memorial, and three contextual panels. Seven waysides were installed in Waynesville, Missouri at Laughlin Park. Two exhibits for the 1823 Nashville Bridge Abutment are under review.
- **WORKSHOP:** Twenty Trail of Tears Association (TOTA) members from four states gathered in Brentwood, Tennessee, for a two-day capacity building communications workshop. Day One: A facilitator from the Center for Nonprofit Management focused on leadership and the roles and responsibilities of an organizational board. Day Two: NTIR staff focused on external communication. Participants learned how to articulate the significance of the trail in a way that will help the public connect to the sites, segments, and stories, thus increasing awareness and protection of the trail. Workshop participants received tips for writing press releases and best practices for marketing materials that help the association meet its goals.

### Cultural Resource Update

The Center for Historic Preservation (CHP) from Middle Tennessee State University and National Trails Intermountain Region (NTIR) are entering into its fourth year of working on preservation activities associated with the trail. This past year, CHP completed the historic buildings/structures survey and condition assessment of properties. As a result, CHP's expanded list of

structures soared to 234. These findings will help guide TOTA and NTIR to identify priorities for preservation and interpretive opportunities along the trail. To that end, two cultural resource workshops are planned for 2016.

CHP has also developed a Historic Structures Report for Crider Corncrib in Kentucky, and two preservation booklets on historic

log cabin and masonry building preservation—for distribution to property owners and preservation organizations.

For next year, CHP will complete national register nominations for select road segments in Kentucky and Tennessee, and prepare preservation plans for four more historic properties along the historic route.

---

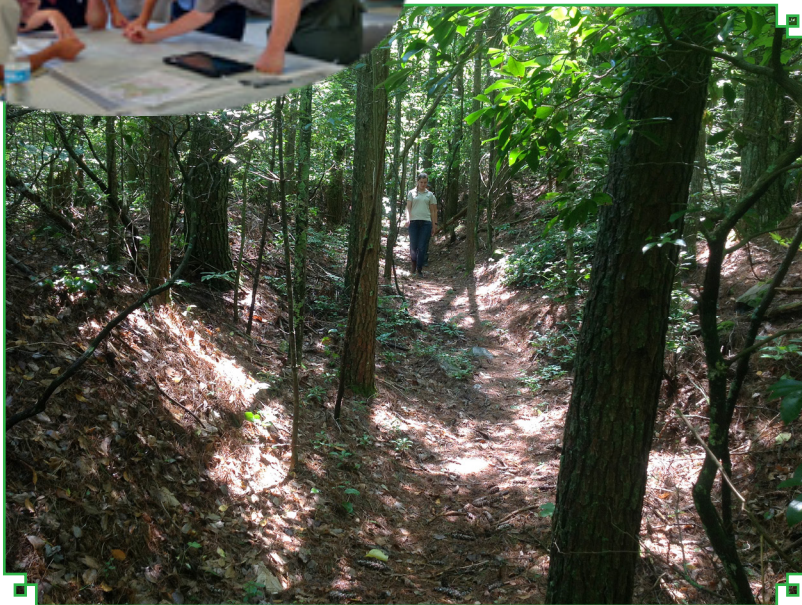
## Design & Development Projects

---

- Fort Armistead, Tennessee: A tribal listening session and design charette commenced the week of July 13th for the fort, an archaeologically intact fort site. Ideas for site/trail development as well as interpretation were conceptualized, and will be compiled into a development concept plan in 2016.
- Hamburg Hill, Illinois: NTIR has partnered with Shawnee National Forest to develop a one-mile section of pedestrian trail, a trailhead, and two exhibits. Funded by Connect Trails to Parks.
- Ten counties across five states! Twelve sign plans were completed in 2015 across 10 counties within the states of Alabama, Georgia, Illinois, Missouri, & Tennessee. These signs will mark approximately 78 miles of the Trail of Tears National Historic Trail.
- Birchwood, Tennessee: A Connect Trails to Park project proposal has been submitted to develop a section of retracement trail that will connect Cherokee Removal Memorial Park at historic Blythe Ferry.



The charette brought together representatives from the NPS and USFS; Cherokee, Eastern Band Cherokee, and Creek nations; Western Carolina University; local community organizations; and TOTA.



As part of the Fort Armistead project, NTIR will work with the Cherokee National Forest to sign Unicoi Turnpike retracement trail in Tennessee with pedestrian signs.

## Staff News

NTIR has several new employees in both our Santa Fe and Salt Lake City offices. In May, **Jill Jensen** joined the cultural resource specialist team; in June **Mike Elliott** returned as a planner; in August, **John Cannella** accepted the position of Deputy Superintendent/ Program Manager, and **Kelly Shea** came on as Administrative Officer. Welcome!

---

## State Brochures

The North Carolina state brochure is underway. The TOTA Kentucky chapter requested a state brochure, and NTIR has it in their work queue.

---

## Find Your Park or Trail

Trail of Tears NHT has an entry on the website FindYourPark.com. Since posting the experience in August, we have received almost 100 requests for the NPS-produced Trail of Tears film. The Find Your Park campaign is expanding the public's view of the National Park System and as a result, NHTs will receive more public attention!

---

## News Releases

Trail of Tears news releases can be found at: [www.nps.gov/trte](http://www.nps.gov/trte)



### 100 Years in 2016

The NPS is celebrating its 100th birthday! What's your favorite park? (We think it may be a national historic trail...)

### More Anniversaries

2016 NPS Centennial  
2018 50 years National Trails System

### Comments? Write to:

Lynne Mager  
Interpretive Specialist  
National Trails Intermountain Region  
PO Box 728, Santa Fe NM 87504  
[Lynne\\_Mager@nps.gov](mailto:Lynne_Mager@nps.gov)