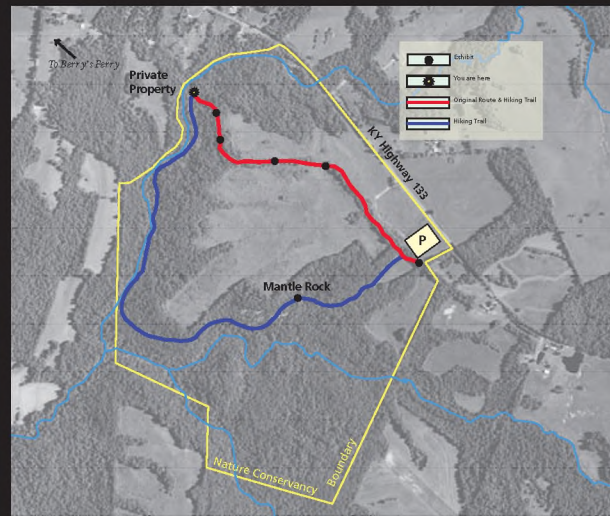




The Original Route

Here you leave the historic Trail of Tears original route. It turns to your right, across the creek onto private property, and continues to the Ohio River. The Cherokee crossed the river at Berry's Ferry, landing at Golconda. From there, they continued the remaining 490 miles west to Indian Territory.

Please respect the neighboring owners by not hiking on their land. The hiking trail (the blue trail) continues to your left, taking you to Mantle Rock. After your hike, you can drive to Berry's Ferry, the site where the Cherokee crossed the thawed Ohio River by boat.



Mantle Rock Preserve Hiking Trail

You are one-third of the way around the Mantle Rock Preserve trail.

This portion (the blue trail) is a moderately difficult trail.

For a safe visit, please remember to:

- Stay on the trail
- Watch your footing
- Leave no trace

Enjoy your hike!