

The Five Themes of Geography

with

Weir Farm National Historical Park



The Five Themes of Geography

A scenic autumn landscape featuring a stone wall in the foreground, trees with vibrant yellow and orange foliage, and a misty background. The scene is captured in a soft, slightly overcast light, emphasizing the textures of the rocks and the colors of the leaves.

Location

Place

Human-Environment Interaction

Movement

Region



LOCATION

Absolute Location:

What is the latitude and longitude of the location?

What is the address?

Relative Location:

What is the site near?

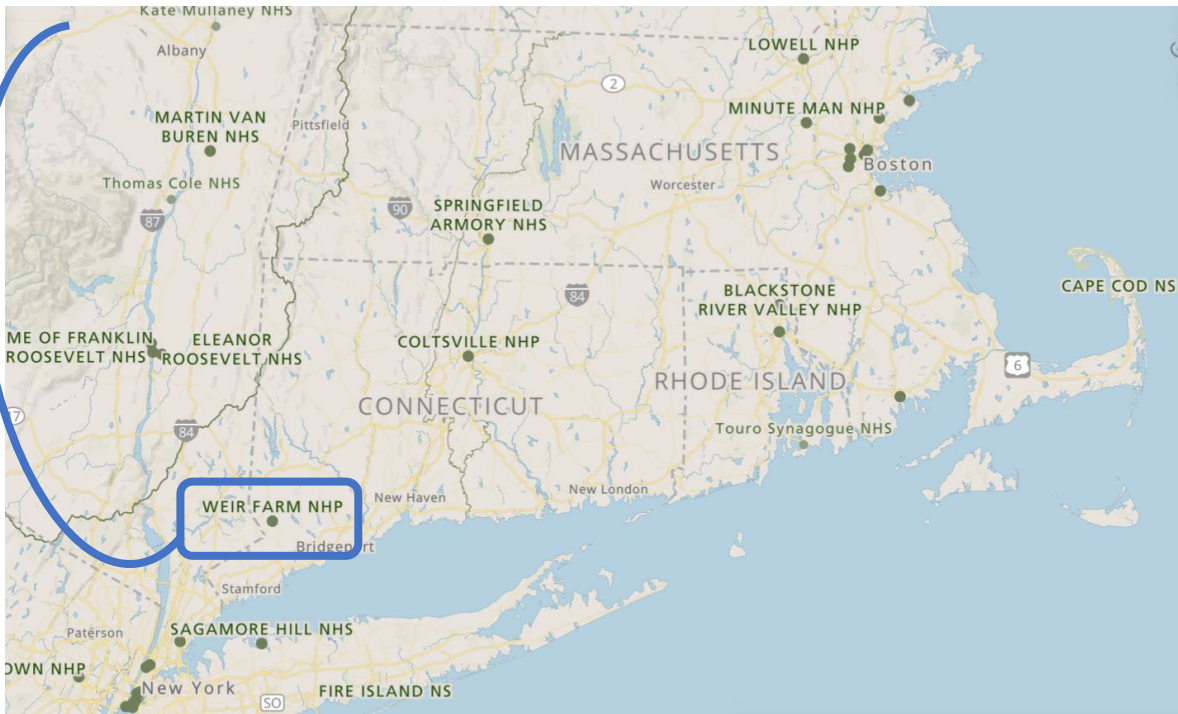
LOCATION

Where is Weir Farm National Historical Park?

Absolute Location

Latitude: 41.25° N, Longitude: -73.45° W

735 Nod Hill Road, Wilton, Connecticut, USA



Relative Location

Weir Farm is in Connecticut about 2 hours north of New York City by train.

The train station is 3.5 miles away from the park.



Julian Alden Weir, *Spring Landscape, Branchville, 1882*, Watercolor, Weir Farm National Historical Park



PLACE

What makes this place different from other places?

How would you describe this place?

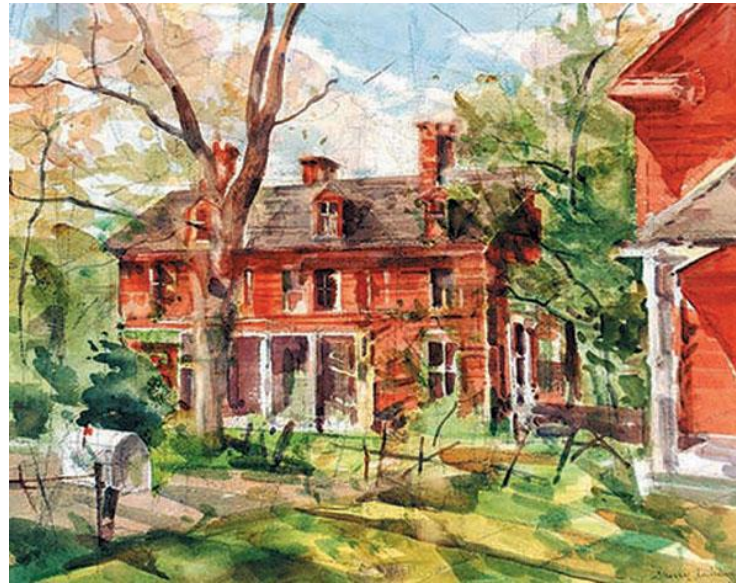
PLACE

Julian Alden Weir, an American Impressionist painter, moved to the farm in 1882. His art was inspired by the beauty of the landscape. Following him, two additional generations of artists carried on that creative legacy.

Today the area is preserved by the National Park Service as Weir Farm National Historical Park. The site has multiple red-painted buildings, including a house and two studios. There are also hiking trails, historical gardens, and a pond.



Julian Alden Weir, *Afternoon by the Pond*, 1908-1909, Oil on Canvas, The Phillips Collection, Washington D.C.



C. Sperry Andrews, *South Side of Main House*, Watercolor, Private Collection



Mahonri Mackintosh Young, *Branchville Gate*, Watercolor, Brigham Young University Museum of Art. Purchase/gift of Mahonri M. Young Estate



HUMAN- ENVIRONMENT INTERACTION

**How have people changed
the place?**

How have people adapted to it?

How do people depend on it?

How have people modified it?

HUMAN-ENVIRONMENT INTERACTION

How have people changed the place?

How have people adapted to it?

How do people depend on it?

How have people modified it?



Julian Alden Weir used this Palace Car so he could paint outdoors during the cold Connecticut winters.



The families of Weir Farm grew crops (corn and hay) and raised farm animals (chickens and pigs).

Julian Alden Weir, *Midday Rest in New England*, 1897, Oil on Canvas, Pennsylvania Academy of Fine Arts, Philadelphia. Gift of Isaac H. Clothier, Edward H. Coates, Dr. Francis W. Lewis, Robert C. Ogden, and Joseph G. Rosengarten



A dam and stone-lined channels were built to create a pond where the families enjoyed fishing, boating, and swimming.



MOVEMENT

What type of movement happens here?

How do people, objects, and ideas move?

MOVEMENT

What type of movement happens here?

When the Weir family moved to Branchville in 1882, people traveled by train and horse-drawn carriages. Now people visit Weir Farm by car.



Friends visited this special place to exchange creative ideas and to make art inspired by their surroundings.



Dorothy Weir Young, *Ladies at Dinner*, ca. 1930, Oil on Canvas board, Brigham Young University Museum of Art. University purchase/gift from Mahonri M. Young estate

The exchange of ideas continues as rangers educate visitors about the farm and its history. Artists still come to Weir Farm for inspiration.





REGION

What are the boundaries?

What does the place have
in common with
surrounding areas?

REGION

Weir Farm National Historical Park is located in...

... the towns of Wilton and Ridgefield.

... the state of Connecticut.

... the Northeast region of the United States.

... New England.



Caroline Weir Ely, *The Farm House, Branchville*, Watercolor on paper, Weir Farm National Historical Park



Julian Alden Weir, *Autumn*, oil on canvas, 1906, Gift from the Trustees of the Corcoran Gallery of Art, William A. Clark Collection

The Five Themes of Geography

Location

Place

Human-Environment Interaction

Movement

Region

