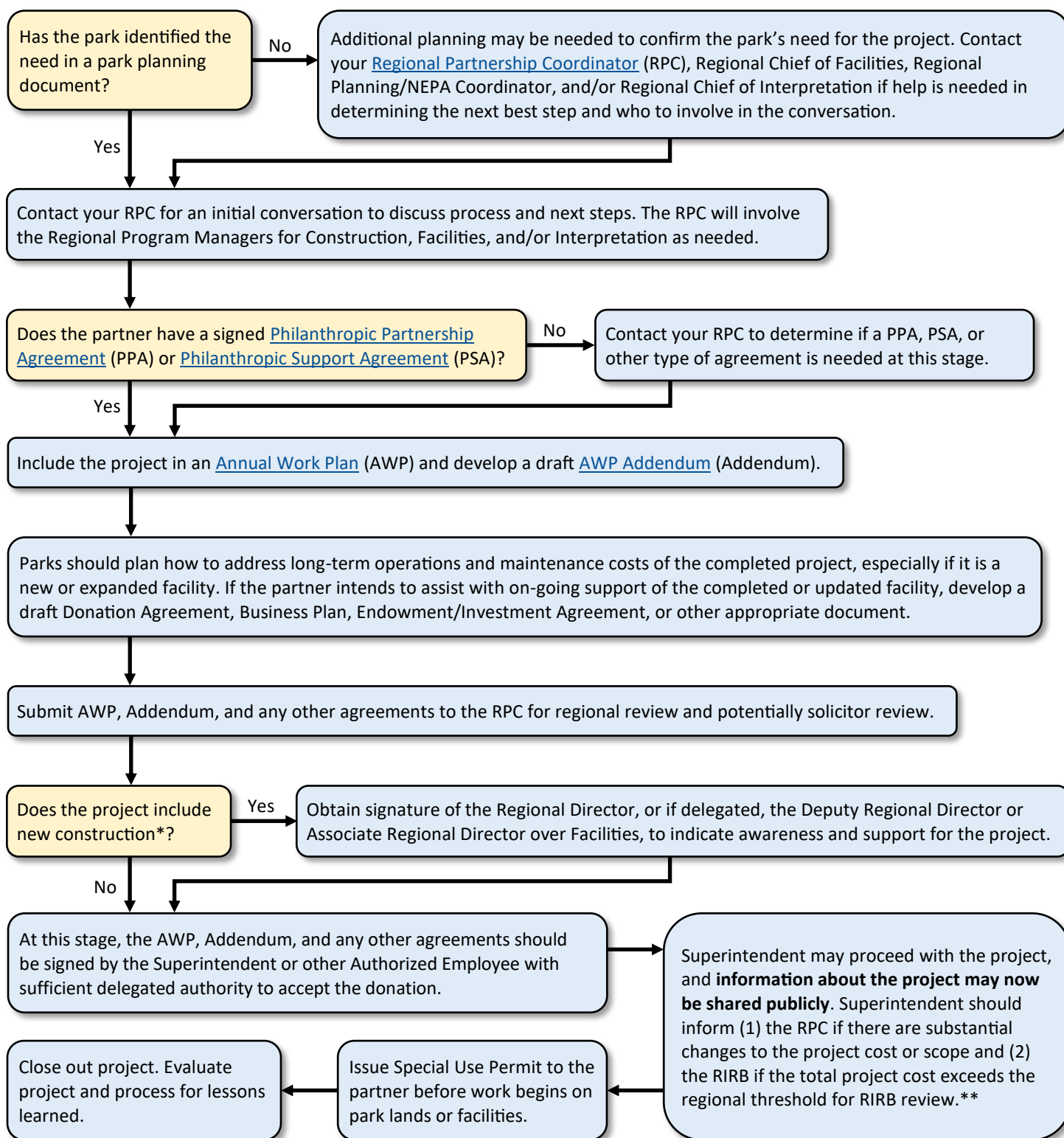


Partnership Design and Construction Simplified Flowchart

Projects Under \$500,000 Managed by a Philanthropic Partner



* New construction is construction of a new asset to accommodate a new function or provide additional capacity. ([Facility Investment Strategy](#))

** If total project cost (including planning, design, contingency, etc.) exceeds a Regional or Bureau IRB threshold during planning, design, or contracting processes, the park may have to seek RIRB/BIRB approval at that time prior to moving forward or awarding a contract.

Note: Other steps may be needed to meet law and policy requirements associated with the National Environmental Policy Act (NEPA), Section 106 of the National Historic Preservation Act, Endangered Species Act, etc.