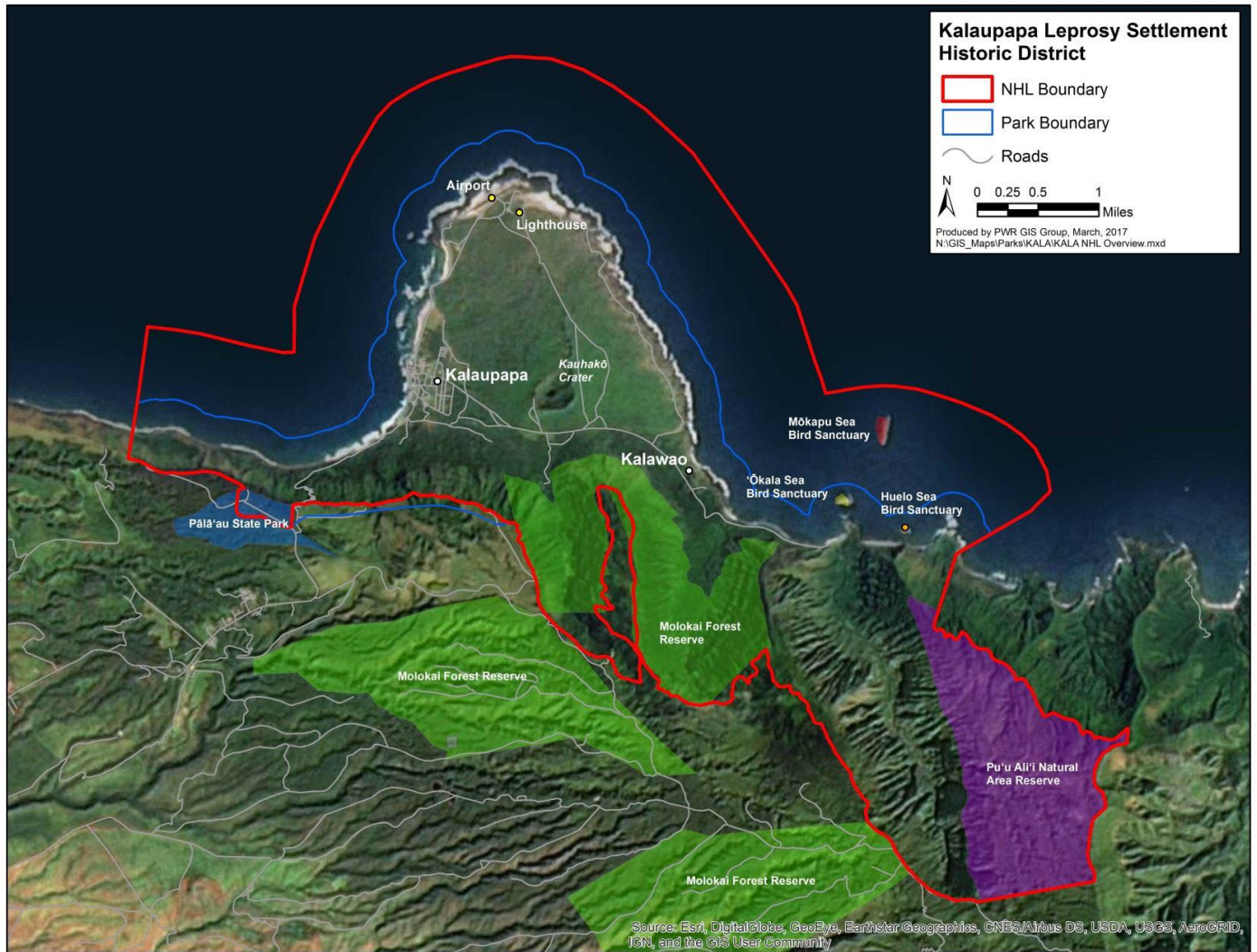


# Kalaupapa Leprosy Settlement

United States Department of the Interior, National Park Service

National Historic Landmarks Nomination Form

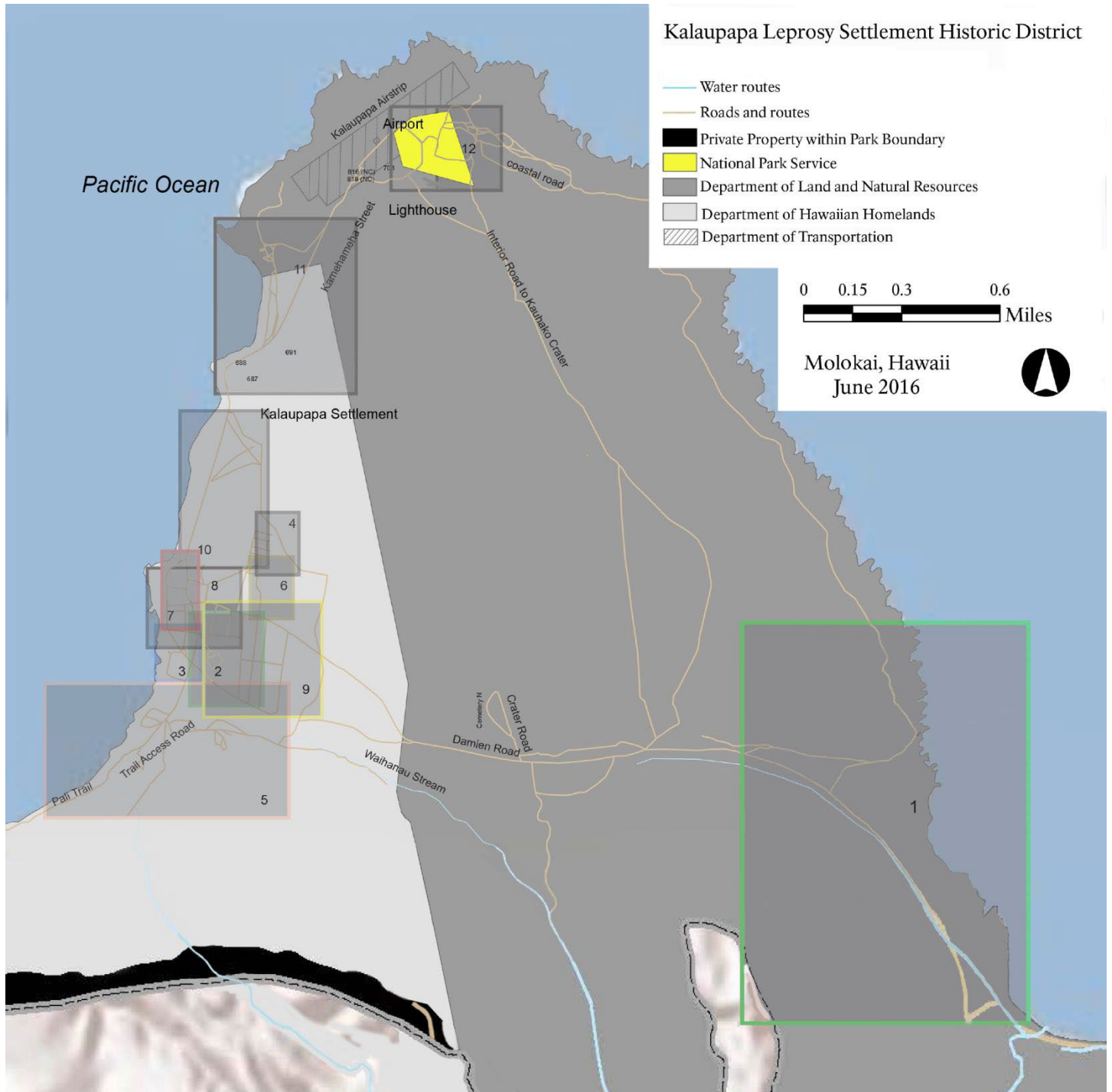


Map 1: Location Map

# Kalaupapa Leprosy Settlement

United States Department of the Interior, National Park Service

National Historic Landmarks Nomination Form



Map 2: Land Ownership and Overview of Developed Areas

**Kalaupapa Leprosy Settlement**

United States Department of the Interior, National Park Service

---

**National Historic Landmarks**  
**Property Name: Kalaupapa Leprosy Settlement**

---

**PAGES REMOVED**

**Map Number: 3**

---

Some information about this property is restricted under law:

National Historic Preservation Act of 1966, as amended, section 304, 16 U.S.C. 470w-3(a)

- *Confidentiality of the location of sensitive historic resources*

Section 304

*[16 U.S.C. 470w-3(a) – Confidentiality of the location of sensitive historic resources]*

(a) The head of a Federal agency or other public official receiving grant assistance pursuant to this Act, after consultation with the Secretary, shall withhold from disclosure to the public, information about the location, character, or ownership of a historic resource if the Secretary and the agency determine that disclosure may –

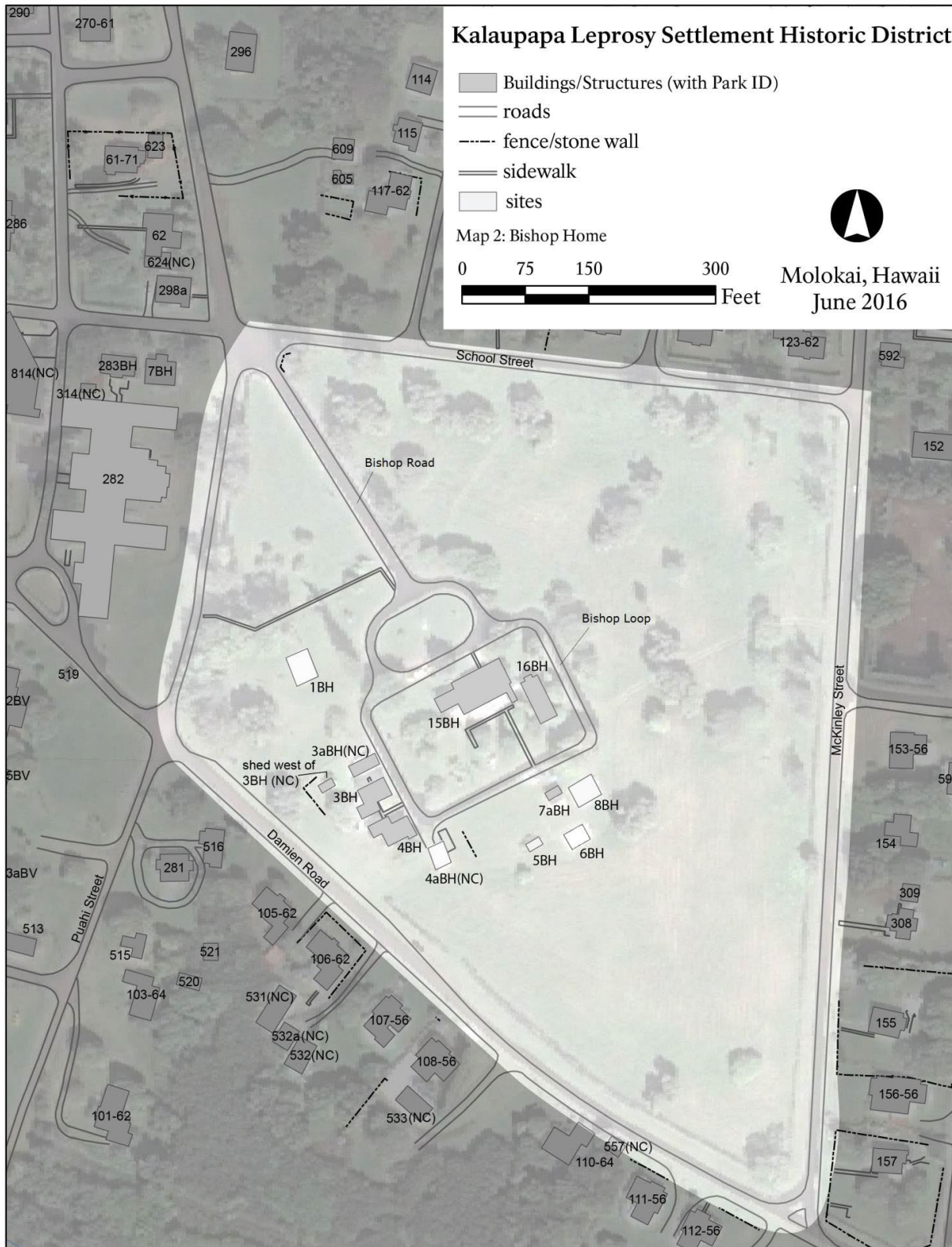
- (1) cause a significant invasion of privacy;
- (2) risk harm to the historic resources; or
- (3) impede the use of a traditional religious site by practitioners.



# Kalaupapa Leprosy Settlement

United States Department of the Interior, National Park Service

National Historic Landmarks Nomination Form



Map 4: Bishop Home

# Kalaupapa Leprosy Settlement

United States Department of the Interior, National Park Service

National Historic Landmarks Nomination Form



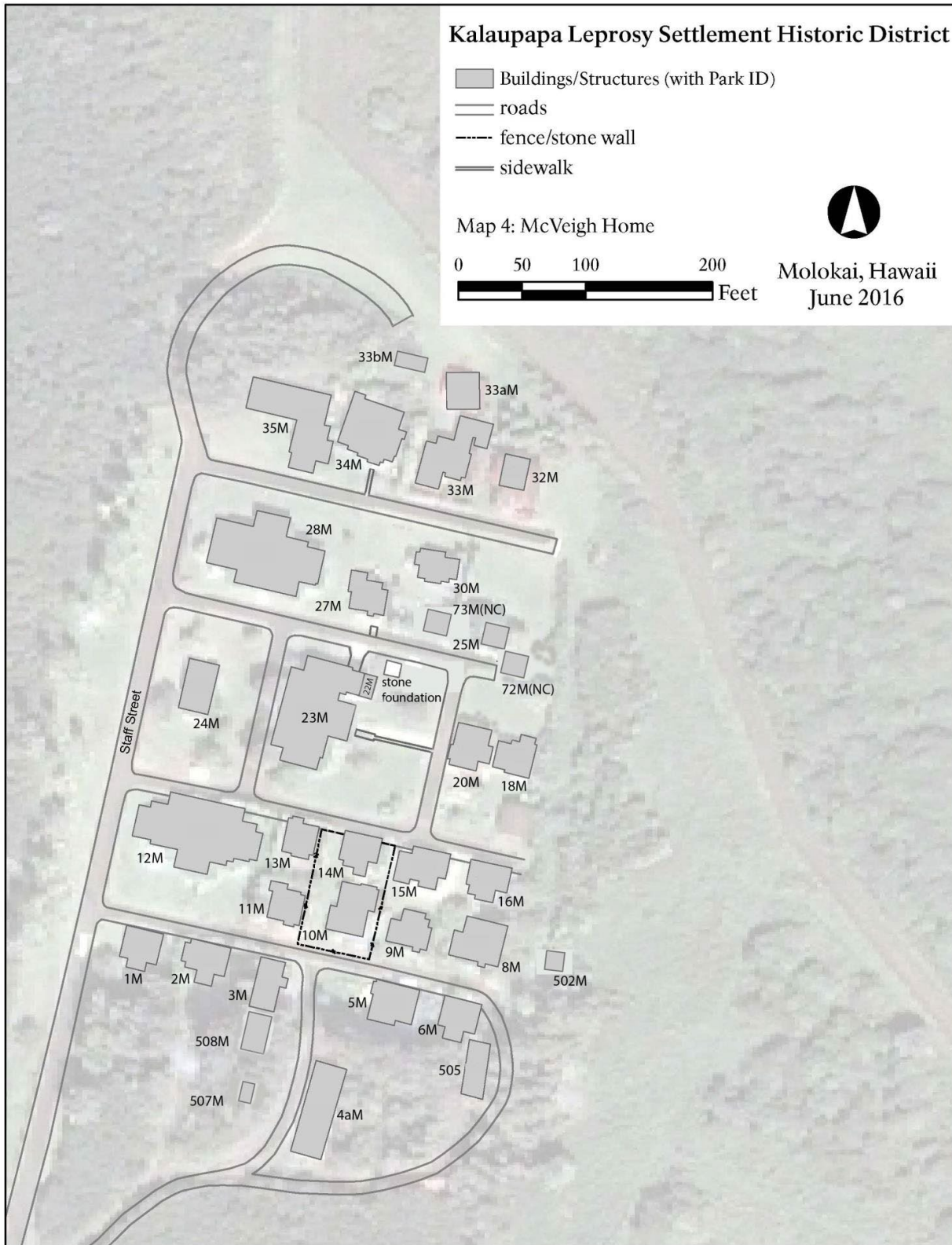
Map 5: Bay View Home



# Kalaupapa Leprosy Settlement

United States Department of the Interior, National Park Service

National Historic Landmarks Nomination Form



Map 6: McVeigh Home

**Kalaupapa Leprosy Settlement****Page 191**

United States Department of the Interior, National Park Service

National Historic Landmarks Nomination Form

## National Historic Landmarks

**Property Name: Kalaupapa Leprosy Settlement**

---

**PAGES REMOVED**

**Map Number: 7**

---

Some information about this property is restricted under law:

National Historic Preservation Act of 1966, as amended, section 304, 16 U.S.C. 470w-3(a)

- *Confidentiality of the location of sensitive historic resources*

Section 304

*[16 U.S.C. 470w-3(a) – Confidentiality of the location of sensitive historic resources]*

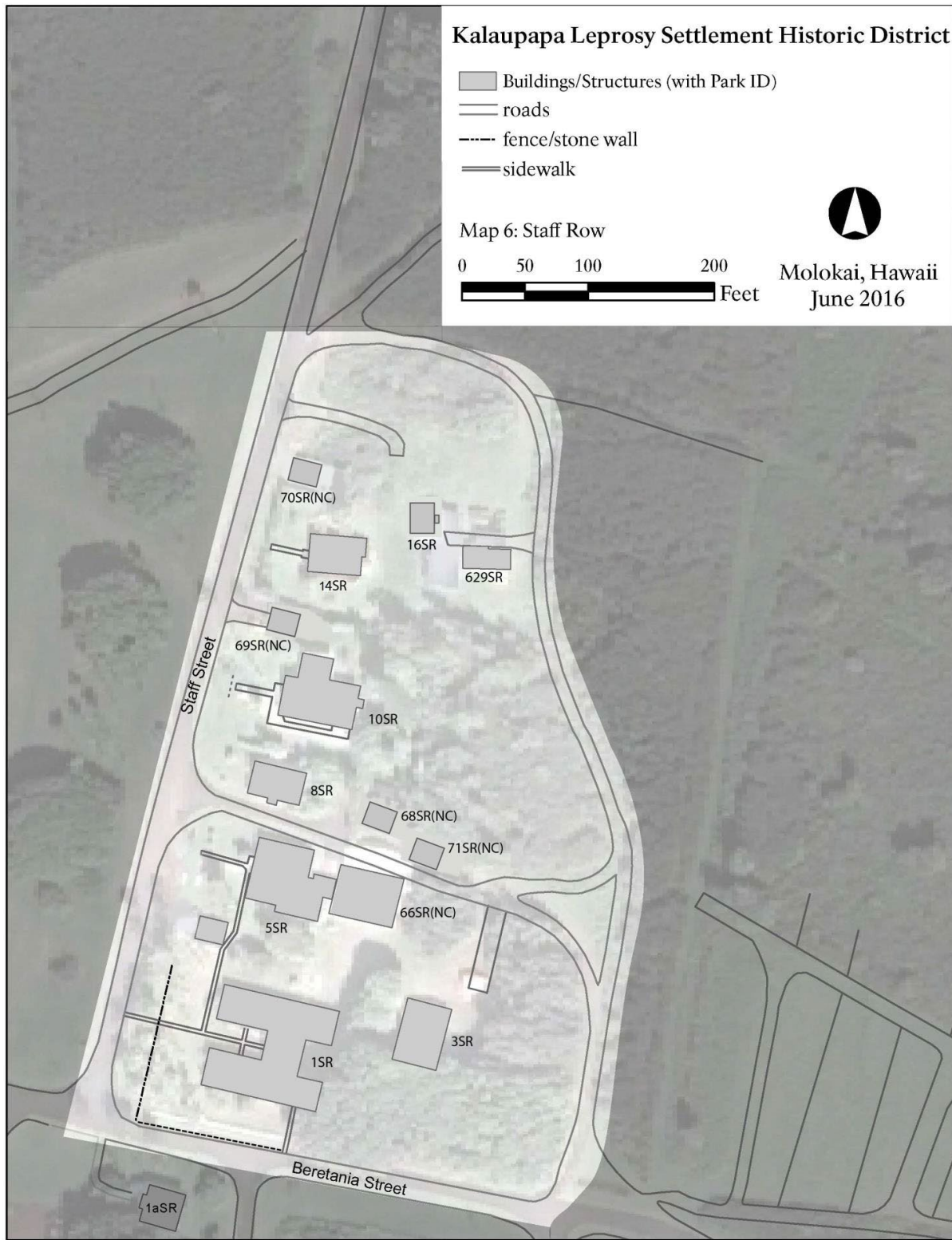
(a) The head of a Federal agency or other public official receiving grant assistance pursuant to this Act, after consultation with the Secretary, shall withhold from disclosure to the public, information about the location, character, or ownership of a historic resource if the Secretary and the agency determine that disclosure may –

- (1) cause a significant invasion of privacy;
- (2) risk harm to the historic resources; or
- (3) impede the use of a traditional religious site by practitioners.

# Kalaupapa Leprosy Settlement

United States Department of the Interior, National Park Service

National Historic Landmarks Nomination Form



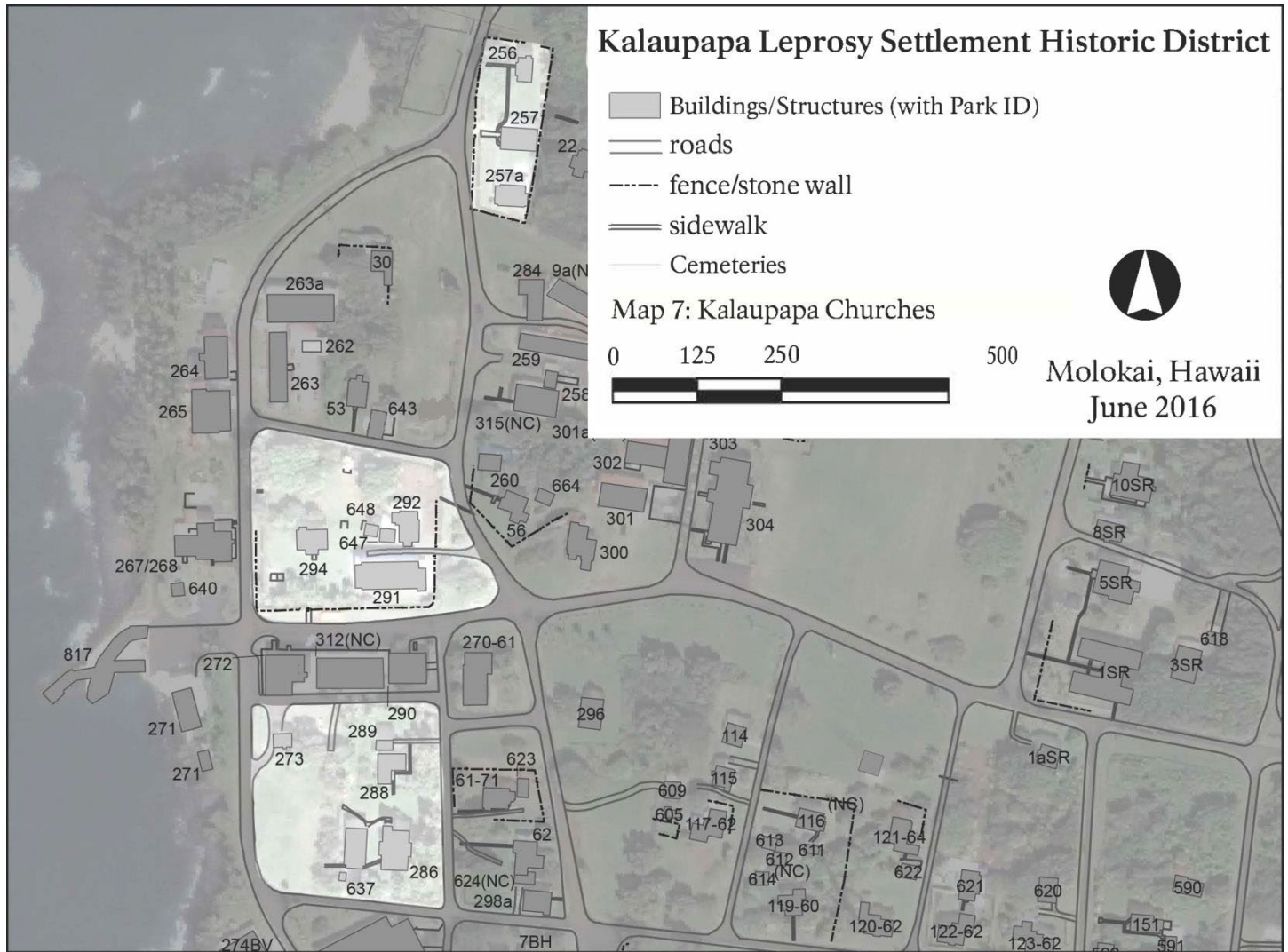
Map 8: Staff Row



# Kalaupapa Leprosy Settlement

United States Department of the Interior, National Park Service

National Historic Landmarks Nomination Form

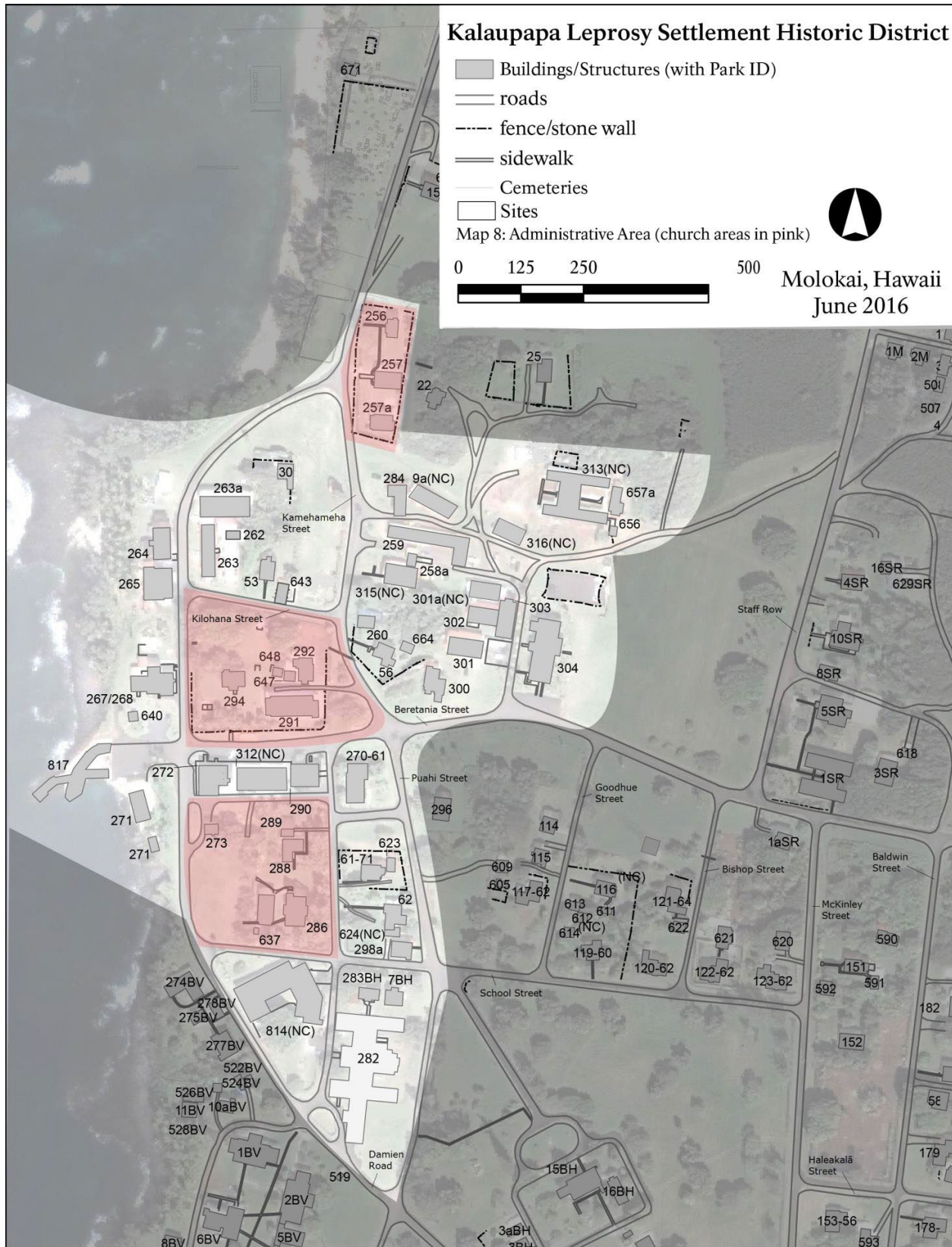


Map 9: Kalaupapa Churches

# Kalaupapa Leprosy Settlement

United States Department of the Interior, National Park Service

National Historic Landmarks Nomination Form



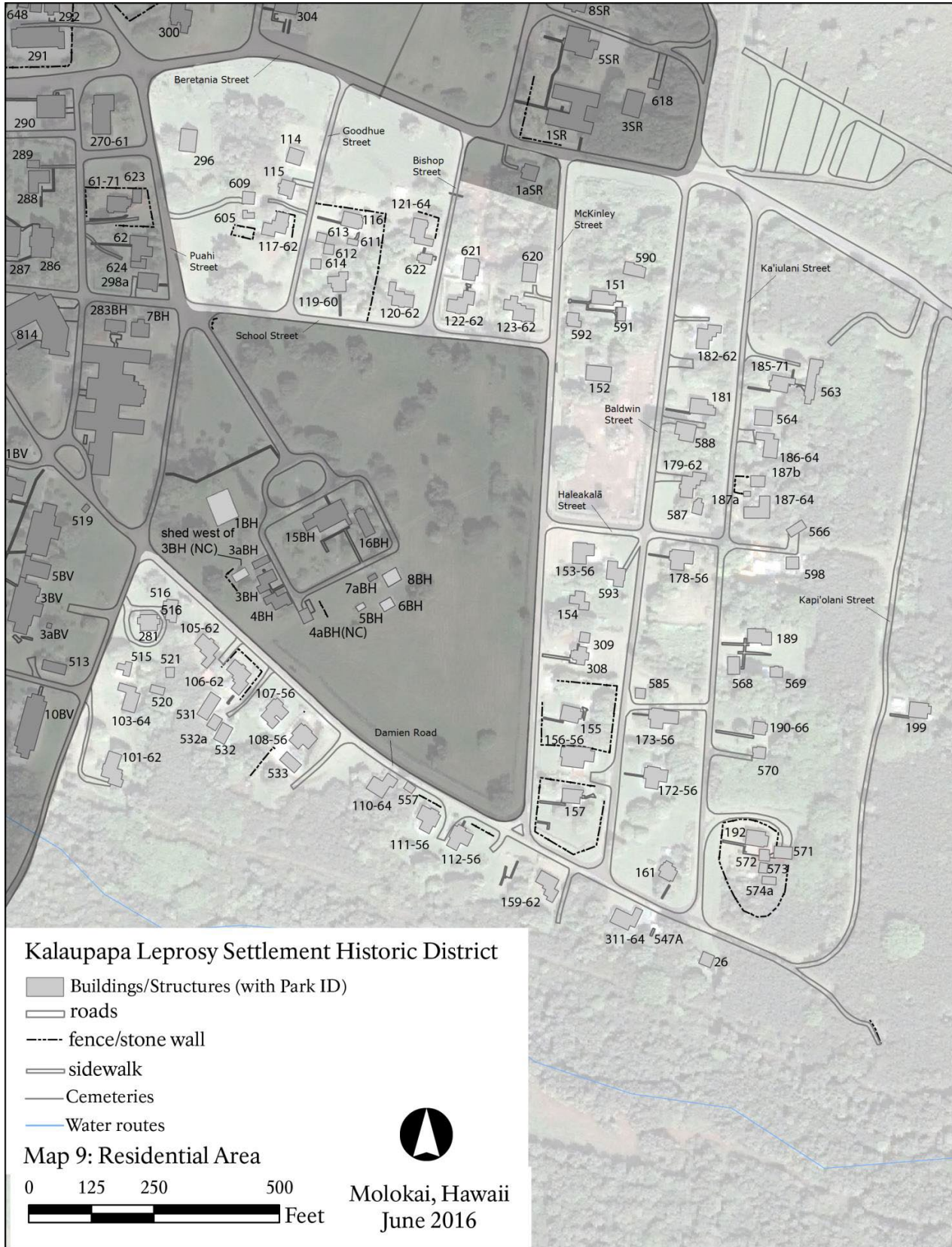
Map 10: Administrative Area



# Kalaupapa Leprosy Settlement

United States Department of the Interior, National Park Service

National Historic Landmarks Nomination Form



Map 11: Residential Area



**Kalaupapa Leprosy Settlement**

United States Department of the Interior, National Park Service

National Historic Landmarks Nomination Form

---

**National Historic Landmarks**  
**Property Name: Kalaupapa Leprosy Settlement**

---

**PAGES REMOVED**

**Map Numbers:** 12, 13

---

Some information about this property is restricted under law:

National Historic Preservation Act of 1966, as amended, section 304, 16 U.S.C. 470w-3(a)

- *Confidentiality of the location of sensitive historic resources*

Section 304

*[16 U.S.C. 470w-3(a) – Confidentiality of the location of sensitive historic resources]*

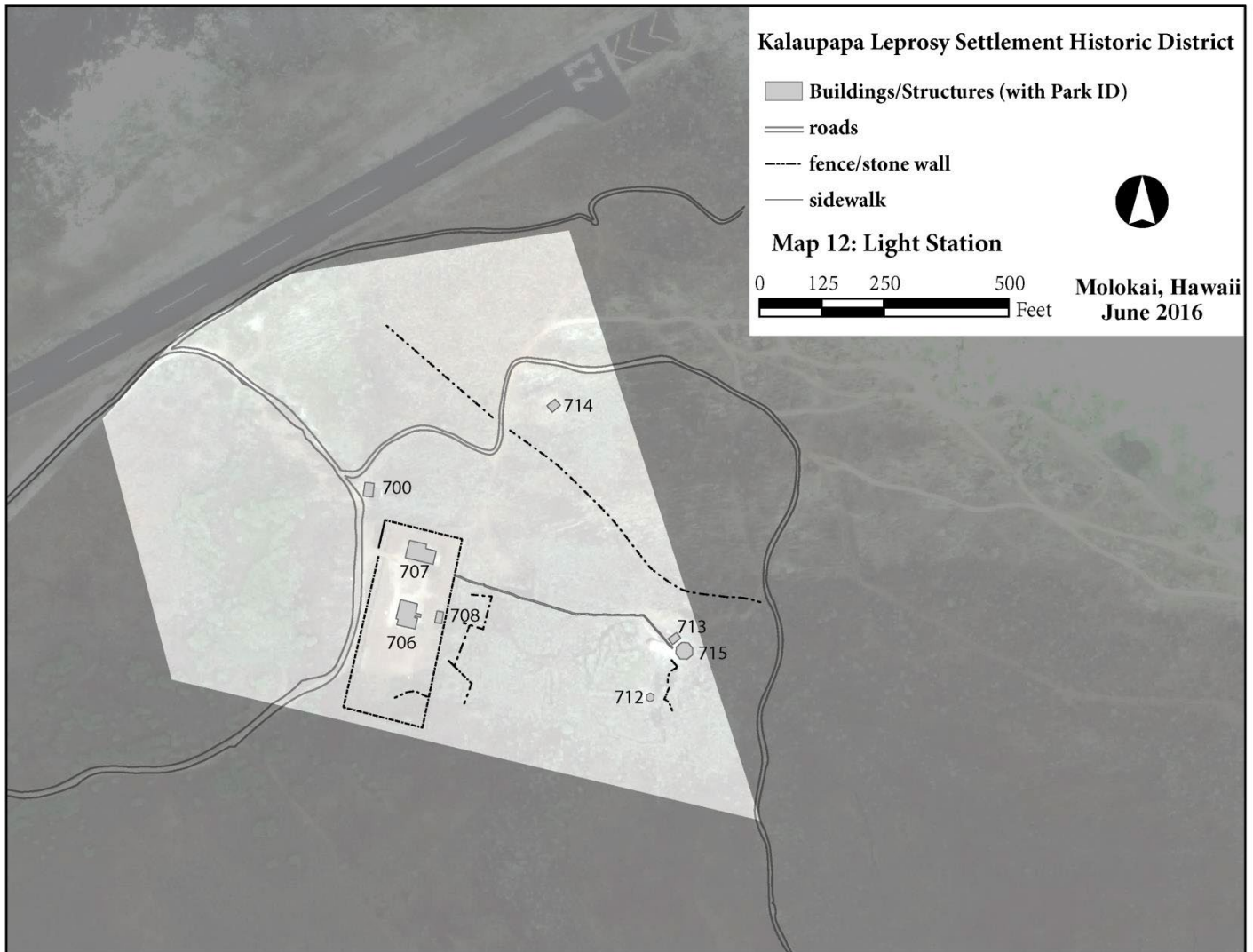
(a) The head of a Federal agency or other public official receiving grant assistance pursuant to this Act, after consultation with the Secretary, shall withhold from disclosure to the public, information about the location, character, or ownership of a historic resource if the Secretary and the agency determine that disclosure may –

- (1) cause a significant invasion of privacy;
- (2) risk harm to the historic resources; or
- (3) impede the use of a traditional religious site by practitioners.

# Kalaupapa Leprosy Settlement

United States Department of the Interior, National Park Service

National Historic Landmarks Nomination Form



Map 14: Molokai Light Station