

Dudley Farm

United States Department of the Interior, National Park Service

Photos/Figures/Maps

National Historic Landmarks Nomination Form

Location Map: Boundary and Coordinates**Latitude-Longitude Coordinates**

A:	29.668407°, -82.548675°
B:	29.668346°, -82.536085°
C:	29.657672°, -82.536160°
D:	29.654390°, -82.540385°
E:	29.654397°, -82.540570°
F:	29.657807°, -82.548631°

The **boundary** is drawn with a solid line.

The **bounding box** is drawn with a dashed line.

The datum is WGS84, and the imagery date is 11/19/2016.

Roads and park boundaries provided by Florida Department of Environmental Protection, Division of Recreation and Parks.









Dudley Farm

United States Department of the Interior, National Park Service

Photos/Figures/Maps

National Historic Landmarks Nomination Form

Overall Site Plan: Legend and List of Resources Depicted**LEGEND**

	National Historic Landmark Boundary
	Boundary of Dudley Farm Historic State Park
	Road
	Contributing Road
	Archeological Site
	Building, structure, or object
	Contributing Resource
	Non-Contributing Resource

Resources Depicted

1. Landscape (site, C)
2. Old Gainesville Road (structure, C)
3. Old Jonesville Road (structure, C)
4. Dudley Farm State Historic Site Archeological Site (site, C)
5. Old Well (structure, C)
6. Dudley Homestead Archeological Site (site, NC)
7. Stone Wall (structure, C)

Dudley Farm

United States Department of the Interior, National Park Service

Photos/Figures/Maps

National Historic Landmarks Nomination Form

Farm Complex – Site Plan

See next page for legend and list of resources.



Base map: Aerial_2017, Alachua County Property Appraiser.

Road mapping provided by Florida Department of Environmental Protection, Division of Recreation and Parks.







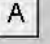
Dudley Farm

United States Department of the Interior, National Park Service

Photos/Figures/Maps

National Historic Landmarks Nomination Form

Farm Complex – Site Plan: Legend and List of Resources Depicted**LEGEND**

	Road
	Contributing Road
	Archeological Site
	Building, structure, or object
	Contributing Resource
	Non-Contributing Resource
	Other Resources

Resources Depicted

- | | |
|--|---|
| <ul style="list-style-type: none"> 2. Old Gainesville Rd. (structure, C) 3. Old Jonesville Rd. (structure, C) 4. Main House (building, C) 5. Flower Pit (building, C) 6. Bird Bath (object, C) 7. Bird Bath (object, C) 8. Cistern (structure, C) 9. Kitchen/Dining Room (building, C) 10. Smokehouse (building, C) 11. Dairy & Canning Shed (building, C) 12. Brooder House (building, C) 13. East Chicken Coop (building, C) 14. West Chicken Coop (building, C) 15. Small Chicken Coop (building, C) 16. Men's Outhouse (building, C) 17. Well (structure, C) 18. Milking Room/Feed Room (building, C) 19. Horse Stable (building, C) 20. Corn Crib (building, C) 21. Mule Stable (building, C) 22. Hay Barn (building, C) 23. Pump House (building, C) | <ul style="list-style-type: none"> 24. Cane Mill (object, C) 25. Cane Syrup House (building, C) 26. Sweet Potato Cellar (building, C) 27. Packhouse/Store (building, C) 28. Tobacco Barn (building, C) 29. Cattle Dipping Vat (structure, C) 30. Dudley Farm State Historic Site Archeological Site (site, C) 31. Scuppernong Arbor (structure, C) 32. Scuppernong Arbor (structure, C) 33. Scuppernong Arbor (structure, C) 34. Scuppernong Arbor (structure, C) 35. Old Well (structure, C) 36. Dudley Homestead Archeological Site (site, NC) |
|--|---|

Other Resources

- A. Trough
- B. Water Tower Foundation
- C. Cotton House (former location)

Dudley Farm

United States Department of the Interior, National Park Service

Photos/Figures/Maps

National Historic Landmarks Nomination Form

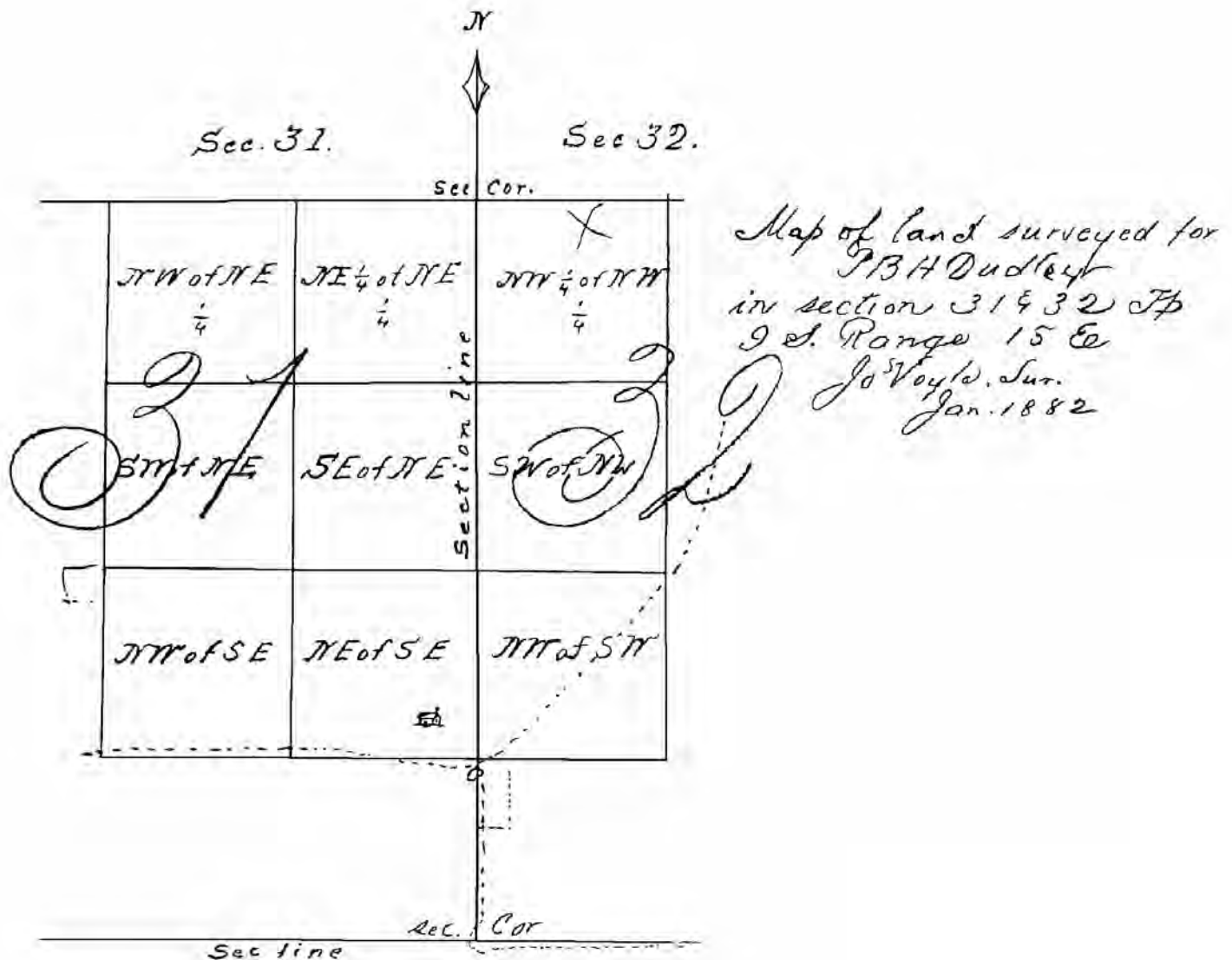
Figures

Figure 1. Property survey, 1882, showing site of 1850s Dudley Homestead and roads in and near Dudley Farm. The NHL boundary encompasses the four blocks in the southeast corner of the surveyed property, straddling the line between sections 31 and 32. The dashed lines represent roads, and the house drawing in the northeast quarter of the southeast quarter of section 31 is the P.B.H. and Mary Dudley homestead.

Source: Department of Environmental Protection, Division of Recreation and Parks, Dudley Farm Historic State Park.

Dudley Farm

United States Department of the Interior, National Park Service

Photos/Figures/Maps

National Historic Landmarks Nomination Form

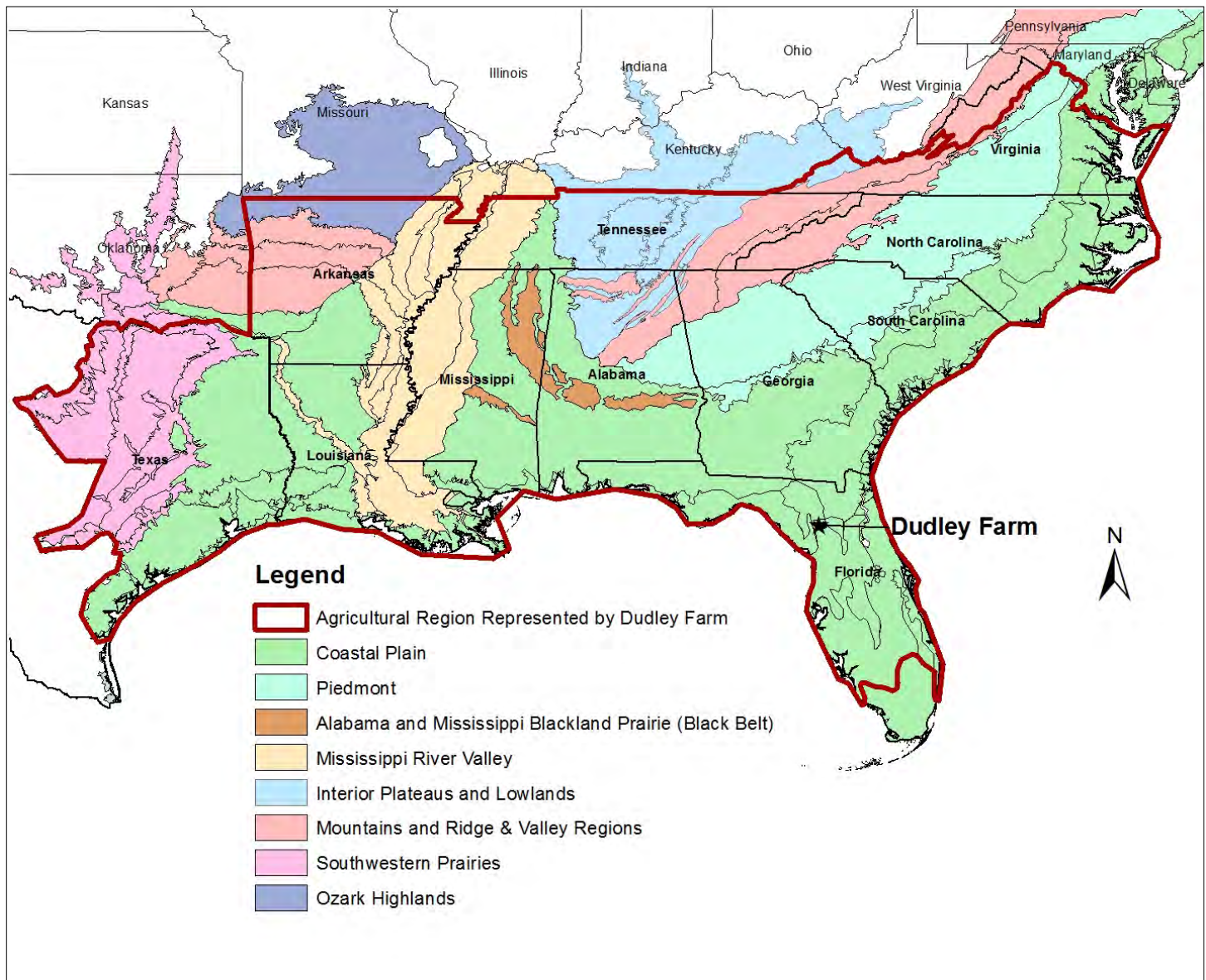


Figure 2. Geophysical regions of the U.S. South and agricultural region represented by Dudley Farm.

Basemap: *Land Resource Regions and Major Land Resource Areas for the Coterminous U.S.* (U.S. Department of Agriculture, Natural Resources Conservation Service, 2006). Feature layer US_MLRA (July 13, 2016 update). accessed through ArcGIS Online.

Dudley Farm

United States Department of the Interior, National Park Service

Photos/Figures/Maps

National Historic Landmarks Nomination Form

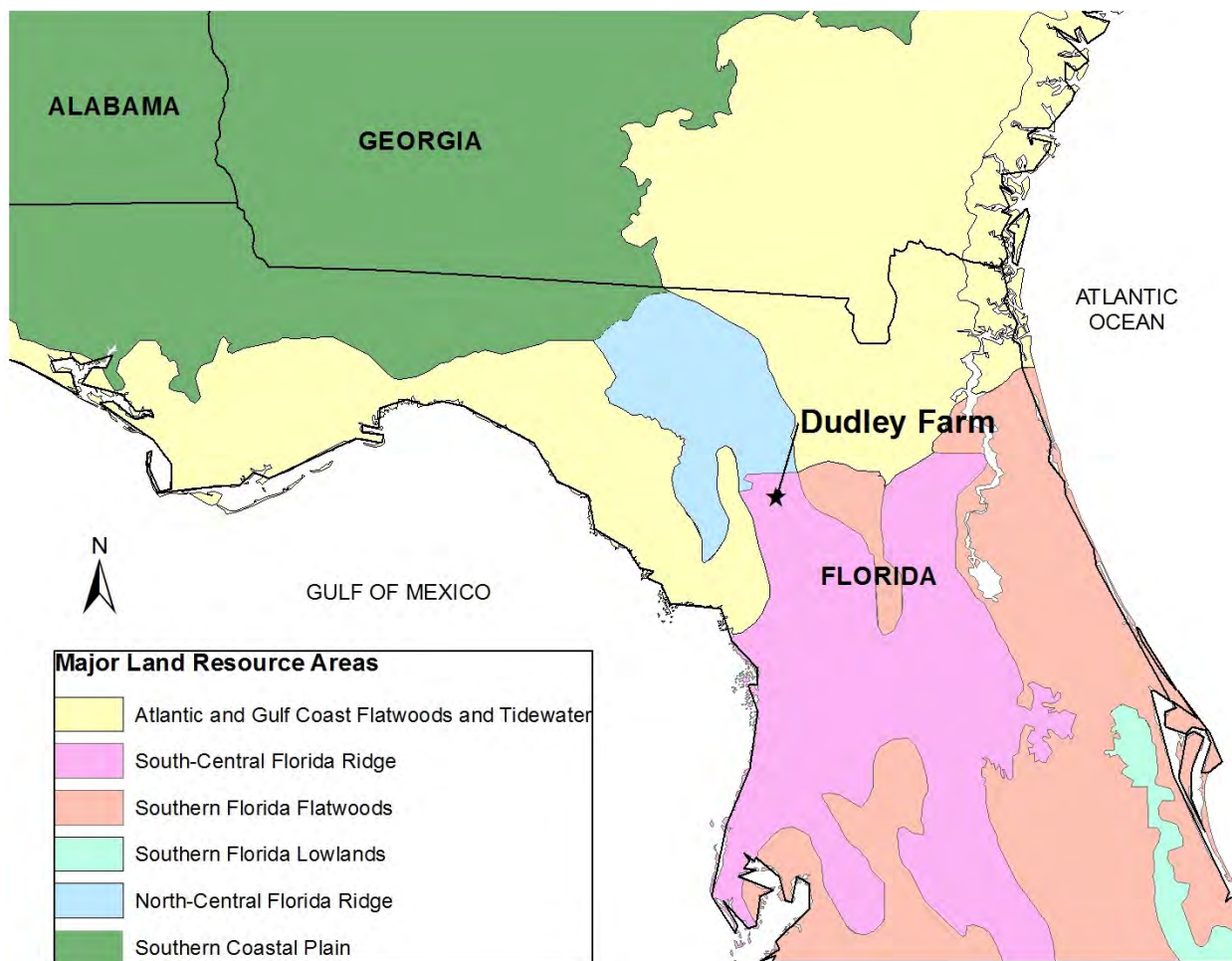


Figure 3. Geophysical regions (Major Land Resource Areas) in the vicinity of Dudley Farm.

Source: *Land Resource Regions and Major Land Resource Areas for the Conterminous U.S.* (U.S. Department of Agriculture, Natural Resources Conservation Service, 2006). Feature layer US_MLRA (July 13, 2016 update). accessed through ArcGIS Online.

Dudley Farm

United States Department of the Interior, National Park Service

Photos/Figures/Maps

National Historic Landmarks Nomination Form

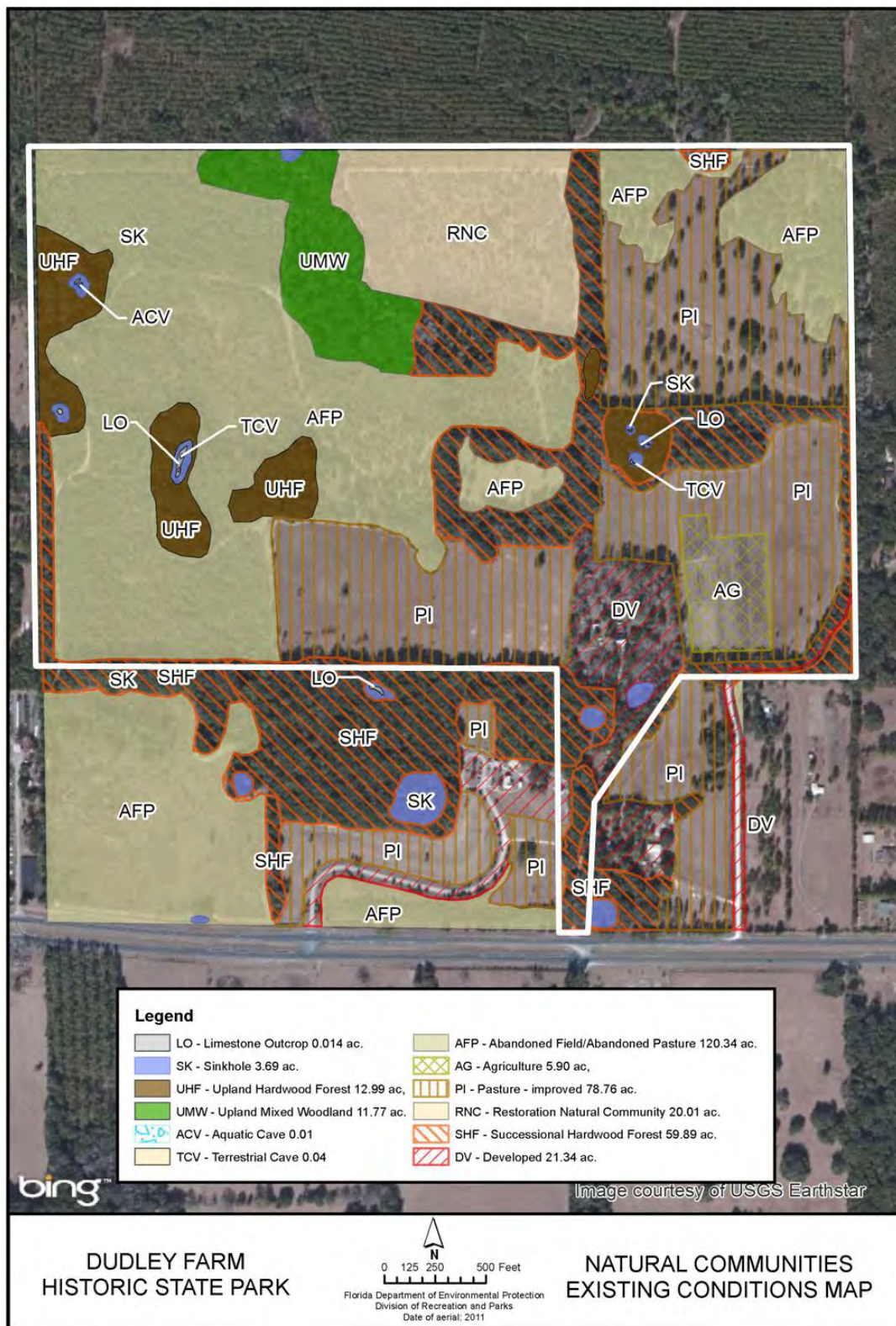


Figure 4. Natural Communities Existing Conditions Map, Dudley Farm Historic State Park, 2017. The white line indicates the NHL boundary and the boundary of the contributing landscape (#1).

Source: *Dudley Farm Historic State Park: Unit Management Plan* (State of Florida, Department of Environmental Protection, Division of Recreation and Parks, October 2017).

Dudley Farm

United States Department of the Interior, National Park Service

Photos/Figures/Maps

National Historic Landmarks Nomination Form

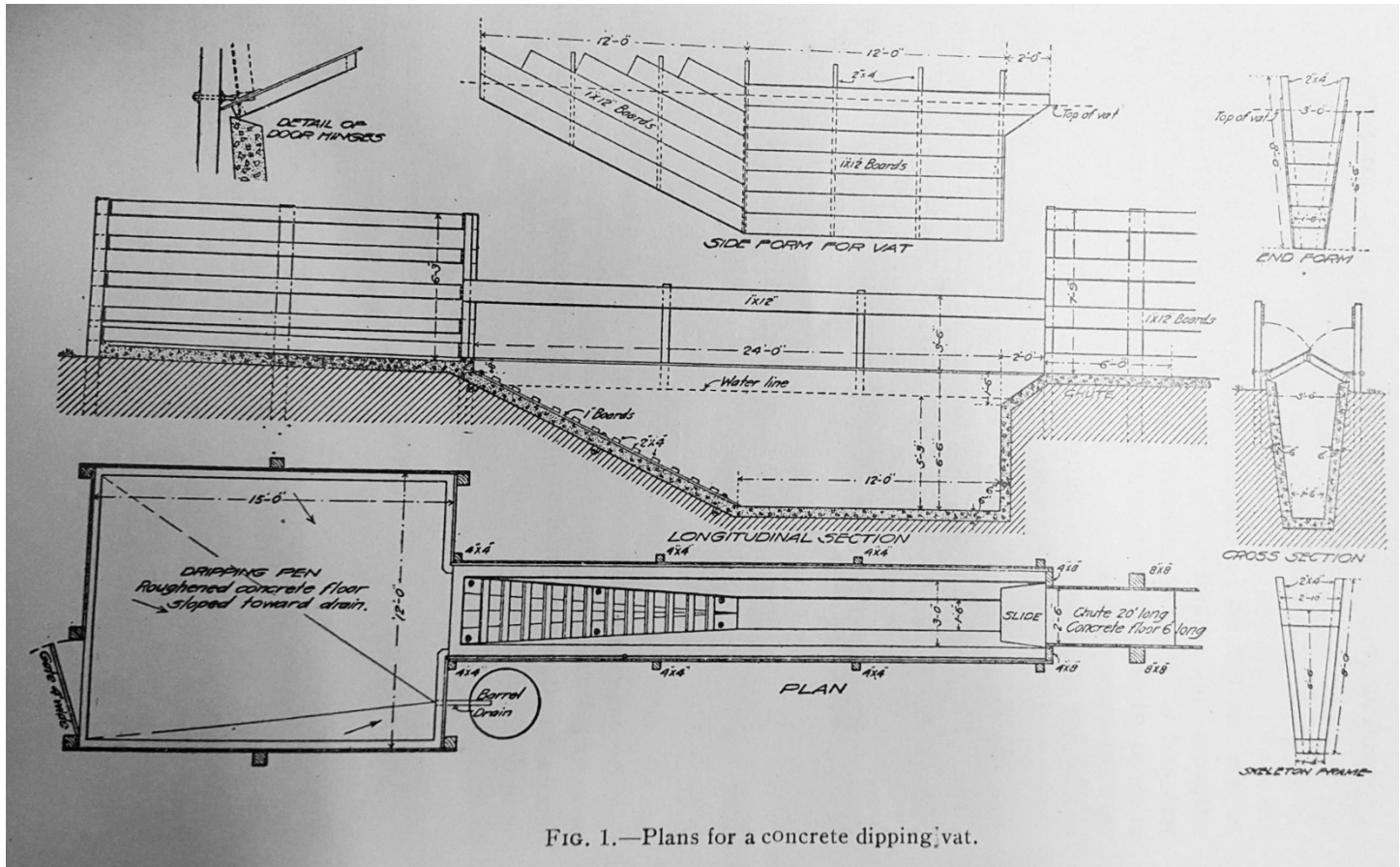


Figure 5. Standard design for cattle dipping vat from Charles F. Dawson (Veterinary Division), *Cattle Tick Eradication*, Reprinted From the Twenty-Fourth Annual Report of the State Board of Health, Publication 103 (DeLand, FL: E.O. Painter Printing Company, 1913), p. 208.

Scanned from copy held by Department of Environmental Protection, Division of Recreation and Parks, Dudley Farm Historic State Park, DUFA 2.2339.

Dudley Farm

United States Department of the Interior, National Park Service

Photos/Figures/Maps

National Historic Landmarks Nomination Form



Figure 6. Dudley Family in front of main house (#4), 1897.

Department of Environmental Protection, Division of Recreation and Parks, Dudley Farm Historic State Park, DUFA 11.189.



Figure 7. Norman and Winnie Dudley in garden in front of main house (#4), c. 1917. The cotton house and washing shed, which are no longer standing, are visible in the background on the left.

Department of Environmental Protection, Division of Recreation and Parks, Dudley Farm Historic State Park, DUFA 11.1340.

Dudley Farm

United States Department of the Interior, National Park Service

Photos/Figures/Maps

National Historic Landmarks Nomination Form



Figure 8. West elevation of main house (#4), 1920s or 1930s.

Department of Environmental Protection, Division of Recreation and Parks, Dudley Farm Historic State Park, DUFA 11.492.

Dudley Farm

United States Department of the Interior, National Park Service

Photos/Figures/Maps

National Historic Landmarks Nomination Form

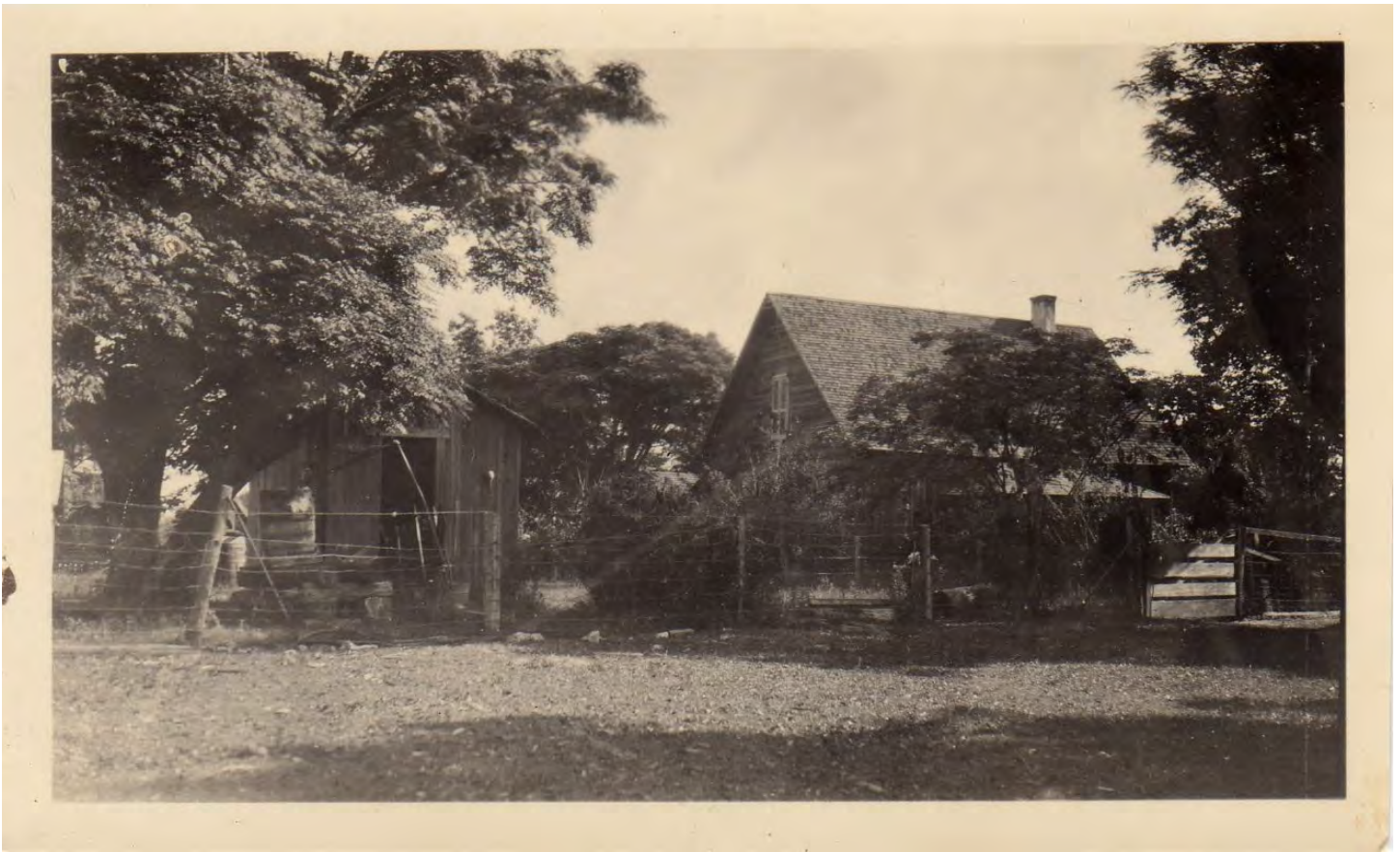


Figure 9. Main house (#4, on right), fence along southern edge of farm complex, and pump house (#23, on left), date unknown.

Department of Environmental Protection, Division of Recreation and Parks, Dudley Farm Historic State Park, DUFA 11.256.

Dudley Farm

United States Department of the Interior, National Park Service

Photos/Figures/Maps

National Historic Landmarks Nomination Form



Figure 10. Myrtle Dudley and dogs in front of west elevation of kitchen (#9), circa 1930.
Department of Environmental Protection, Division of Recreation and Parks, Dudley Farm Historic State Park,
DUFA 11.268.

Dudley Farm

United States Department of the Interior, National Park Service

Photos/Figures/Maps

National Historic Landmarks Nomination Form



Figure 11. Carlton Dudley (son of Frank and Cara Dudley) on horse in mule yard, with east elevation of horse stable (#19) in background, early 1950s.

Department of Environmental Protection, Division of Recreation and Parks, Dudley Farm Historic State Park, DUFA 11.065.



Figure 12. Norman Dudley and horse in mule yard, with south elevation of mule stable (#21) in background, c. 1955.

Department of Environmental Protection, Division of Recreation and Parks, Dudley Farm Historic State Park, DUFA 11.609.

Dudley Farm

United States Department of the Interior, National Park Service

Photos/Figures/Maps

National Historic Landmarks Nomination Form



Figure 13. Threshing oats at east elevation of hay barn (#22), looking south with corn crib (#20) in background, c. 1915.

Department of Environmental Protection, Division of Recreation and Parks, Dudley Farm Historic State Park, DUFA 11.257.

Dudley Farm

United States Department of the Interior, National Park Service

Photos/Figures/Maps

National Historic Landmarks Nomination Form

Photo Key (#1-5, #8-23)

See first-floor plan of main house for photo points for interior photographs (#24-#26).

Dudley Farm

United States Department of the Interior, National Park Service

Photos/Figures/Maps

National Historic Landmarks Nomination Form

Photo Key (#3-4, #6-7)



Base map: Aerial_2017, Alachua Co. Property Appraiser

Roads and park boundaries provided by Florida Dept. of Environmental Protection, Division of Recreation and Parks.

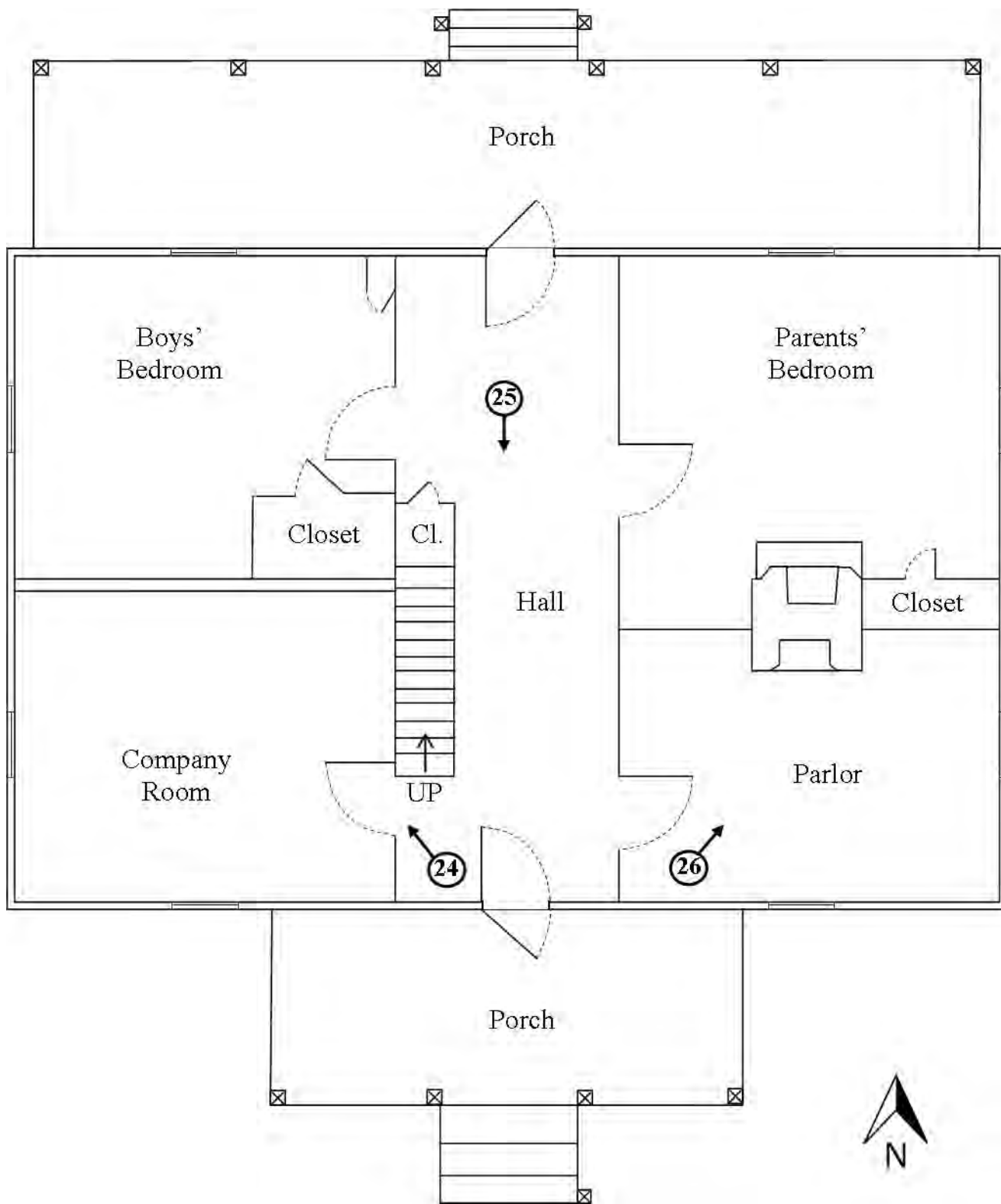
The NHL boundary is represented by a solid black line.

Dudley Farm

United States Department of the Interior, National Park Service

Photos/Figures/Maps

National Historic Landmarks Nomination Form

Main House – First Floor Plan and Photo Key (#24-#26)

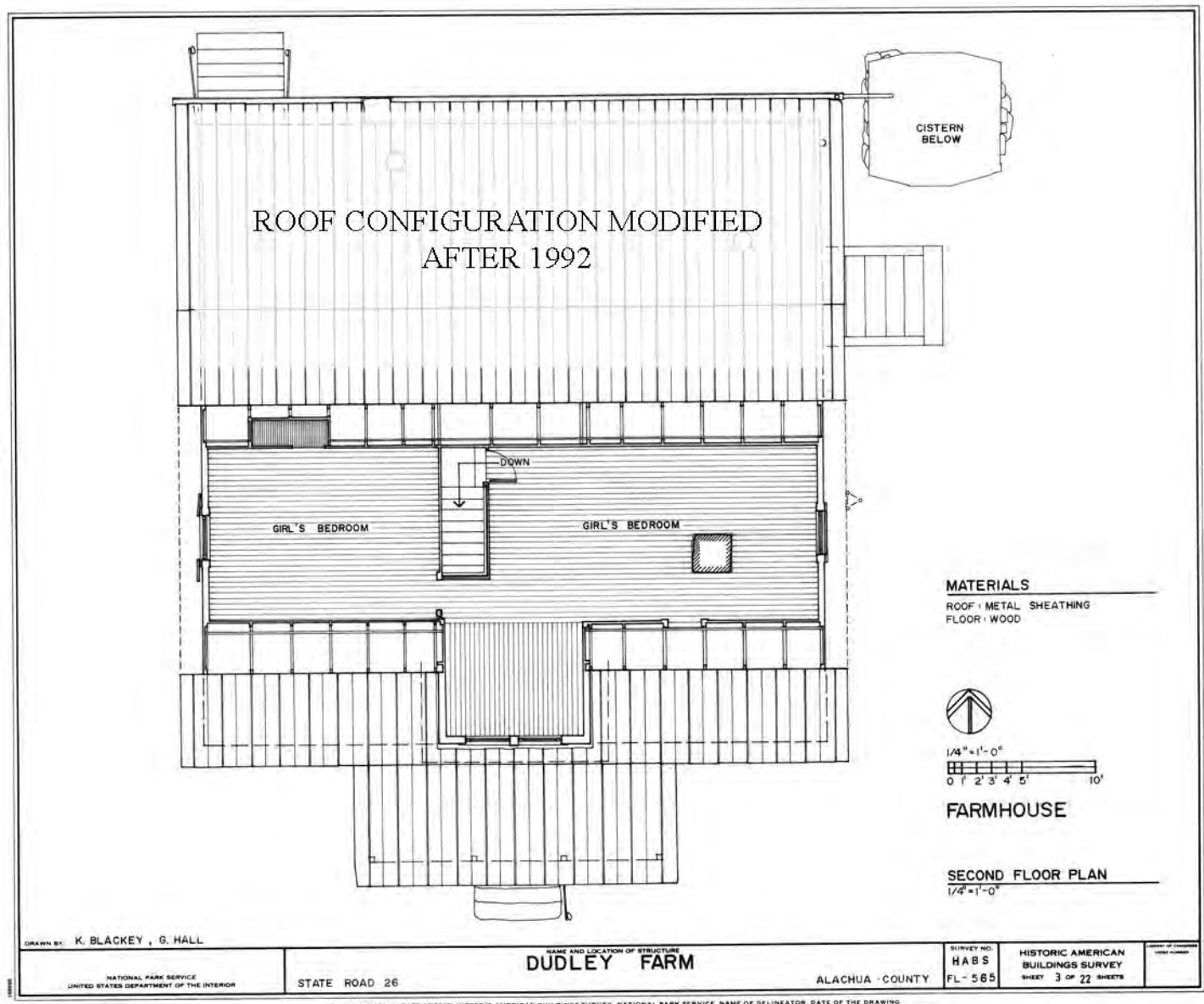
Not to scale. Floor plan is based on the 1992 measured drawing of the floor plan in Historic American Buildings Survey FL-565 (Sheet 2, del. K. Blackey and G. Hall) and modified to reflect changes to the building since 1992.

Dudley Farm

United States Department of the Interior, National Park Service

Photos/Figures/Maps

National Historic Landmarks Nomination Form

Main House – Second Floor Plan

Reproduced with annotations from Historic American Buildings Survey FL-565 (Sheet 3), National Park Service, K. Blackey and G. Hall 1992.