

NATIONAL HISTORIC LANDMARK NOMINATION

NPS Form 10-934 (Rev. 12-2015)

OMB Control No. 1024-0276 (Exp. 01/31/2019)

COLORADO FUEL AND IRON COMPANY ADMINISTRATIVE COMPLEX

Page 1

United States Department of the Interior, National Park Service

National Historic Landmarks Nomination Form

Figures Log

Location Map

Sketch Map with Photograph Locations

Figure 1. This ca. 1905 postcard view northeast shows the sweep of the Colorado Fuel and Iron Company's steelworks in the background and the administrative complex in the left foreground. Courtesy of the authors, historic postcard image collection, Denver, Colorado.

Figure 2. Denver architect Frederick J. Sterner prepared plans for the office building (above) and the dispensary. Courtesy of Steelworks Center for the West, Archives, Frederick J. Sterner, Office Building for Steel Works, Pueblo, Colorado, ca. 1901.

Figure 3. The completed office building is shown in this April 1902 photograph (view north-northeast). Courtesy of *Camp and Plant*, 12 April 1902.

Figure 4. The 1902 dispensary is shown in this photograph (view northeast) prior to the construction of its western employment office addition. Courtesy of Steelworks Center of the West, Archives, Pueblo, Colorado.

Figure 5. Employees at the steelworks bar mill, ca. 1900. Courtesy Steelworks Center of the West, Archives, Pueblo, Colorado.

Figure 6. Overview of the landscaped complex published in *Camp and Plant*, 11 October 1902 (view northwest), with the office building at left and the dispensary at right. The mess hall/clubhouse is above the dispensary and laboratory is to above and to its left. Courtesy of Steelworks Center of the West, Archives, Pueblo, Colorado

Figure 7. This extract from the 1905 Sanborn fire insurance map shows the administrative block at that date. Courtesy of Sanborn Map Company, Pueblo, Colorado, fire insurance map (New York: Sanborn Map Company, 1905).

Figure 8. The extent of the steel plant is shown in this 1918 oblique aerial view. The administrative complex is identified by the arrow. Northern Avenue is near the bottom of the image and railroad tracks pass between the plant and the administrative buildings. Courtesy of *CF&I Industrial Bulletin*, 31 July 1918.

Figure 9. This view northeast shows the employment office (foreground) expansion of the dispensary in 1927 prior to the application of stucco. Courtesy of *CF&I Industrial Bulletin*, March 1927, 15.

Figure 10. CF&I's Minnequa Works steel plant covered a large tract in the southern part of Pueblo, Colorado. Courtesy of Denver Public Library, Western History and Genealogy Department, photograph by Theodore Anderson, image number X-10630, ca. 1913-20, Denver, Colorado.

Figure 11. This map shows CF&I operating properties used for the production of iron and steel. Courtesy of Scamehorn, *Mine & Mill*, 2.

Figure 12. Rows of company houses are shown in this ca. 1915 overview shows Primero in Las Animas County, Colorado, one of CF&I's company coal camps. Courtesy of the authors' historic postcard image collection, Denver, Colorado.

NATIONAL HISTORIC LANDMARK NOMINATION

NPS Form 10-934 (Rev. 12-2015)

OMB Control No. 1024-0276 (Exp. 01/31/2019)

COLORADO FUEL AND IRON COMPANY ADMINISTRATIVE COMPLEX

Page 2

United States Department of the Interior, National Park Service

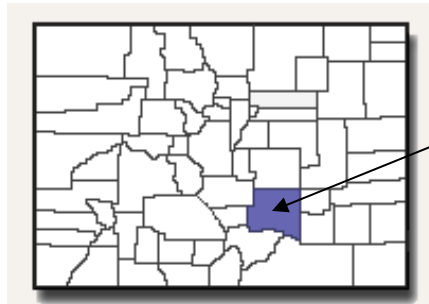
National Historic Landmarks Nomination Form

LOCATION MAP



The labeled red polygon is the nominated area.

Point	Latitude:	Longitude:
1	38.238784	-104.613712
2	38.238784	-104.613007
3	38.238386	-104.613011
4	38.238389	-104.612677
5	38.238061	-104.612675
6	38.237976	-104.612333
7	38.237974	-104.612151
8	38.237734	-104.612149
9	38.237720	-104.613696



CF&I Administrative Complex
(shown in Colorado context with Pueblo County shaded)

Image Date: 28 August 2013

Datum: WGS84

NATIONAL HISTORIC LANDMARK NOMINATION

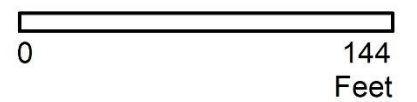


CF&I Administrative Complex: Sketch Map

Contributing Status

- Contributing
- Noncontributing

5 Photo Location and Camera Direction



NHL District Boundary

NATIONAL HISTORIC LANDMARK NOMINATION

NPS Form 10-934 (Rev. 12-2015)

OMB Control No. 1024-0276 (Exp. 01/31/2019)

COLORADO FUEL AND IRON COMPANY ADMINISTRATIVE COMPLEX

Page 4

United States Department of the Interior, National Park Service

National Historic Landmarks Nomination Form

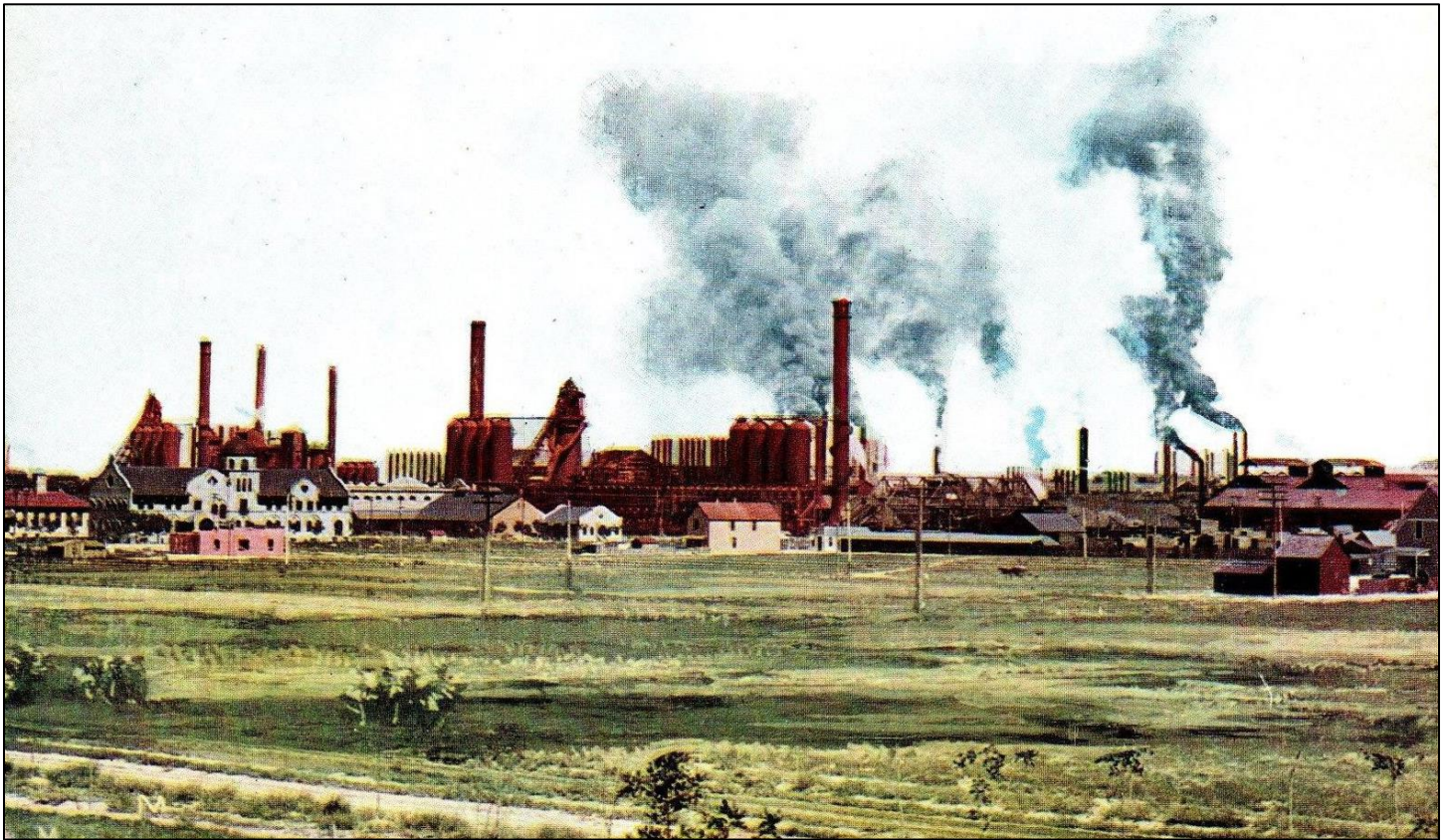


Figure 1. This ca. 1905 postcard view northeast shows the sweep of the Colorado Fuel and Iron Company's steelworks in the background and the administrative complex in the left foreground. Courtesy of the authors, historic postcard image collection, Denver, Colorado.

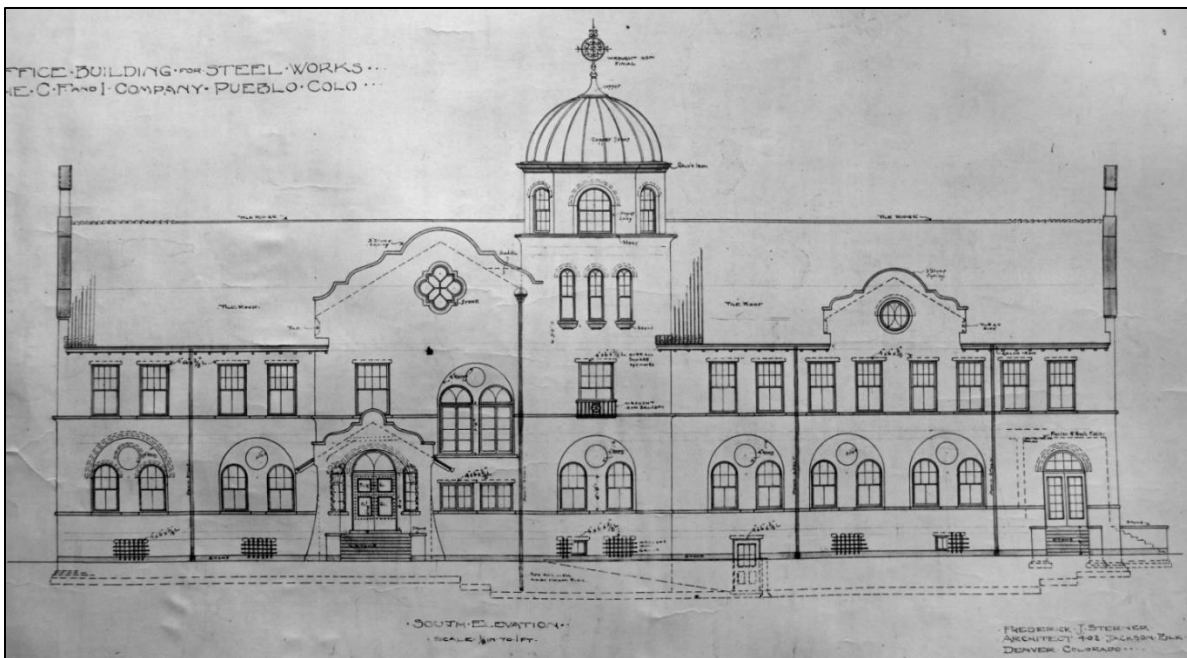


Figure 2. Denver architect Frederick J. Sterner prepared plans for the office building (above) and the dispensary. Courtesy of Steelworks Center for the West, Archives, Frederick J. Sterner, Office Building for Steel Works, Pueblo, Colorado, ca. 1901.

NATIONAL HISTORIC LANDMARK NOMINATION

NPS Form 10-934 (Rev. 12-2015)

OMB Control No. 1024-0276 (Exp. 01/31/2019)

COLORADO FUEL AND IRON COMPANY ADMINISTRATIVE COMPLEX

Page 5

United States Department of the Interior, National Park Service

National Historic Landmarks Nomination Form

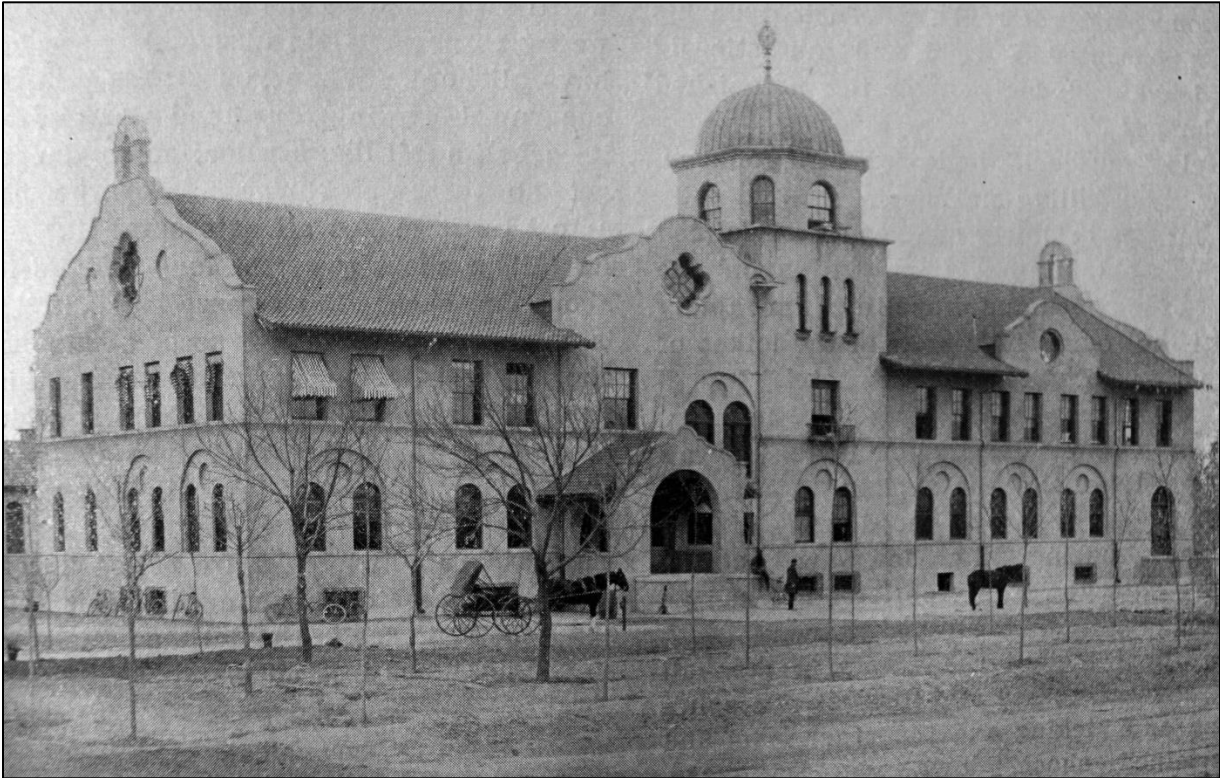


Figure 3. The completed office building is shown in this April 1902 photograph (view north-northeast). Courtesy of *Camp and Plant*, 12 April 1902.



Figure 4. The 1902 dispensary is shown in this photograph (view northeast) prior to the construction of its western employment office addition. Courtesy of Steelworks Center of the West, Archives, Pueblo, Colorado.

NATIONAL HISTORIC LANDMARK NOMINATION

NPS Form 10-934 (Rev. 12-2015)

OMB Control No. 1024-0276 (Exp. 01/31/2019)

COLORADO FUEL AND IRON COMPANY ADMINISTRATIVE COMPLEX

Page 6

United States Department of the Interior, National Park Service

National Historic Landmarks Nomination Form



Figure 5. Employees at the steelworks bar mill, ca. 1900. Courtesy Steelworks Center of the West, Archives, Pueblo, Colorado.

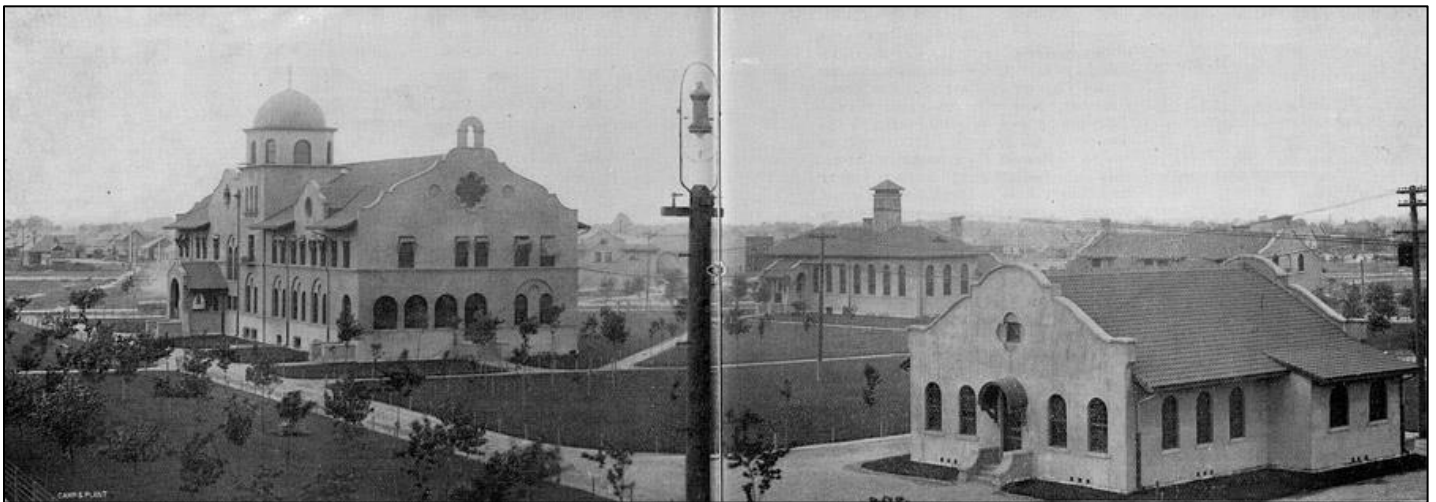


Figure 6. Overview of the landscaped complex published in *Camp and Plant*, 11 October 1902 (view northwest), with the office building at left and the dispensary at right. The mess hall/clubhouse is above the dispensary and laboratory is to above and to its left. Courtesy of Steelworks Center of the West, Archives, Pueblo, Colorado.

NATIONAL HISTORIC LANDMARK NOMINATION

NPS Form 10-934 (Rev. 12-2015)

OMB Control No. 1024-0276 (Exp. 01/31/2019)

COLORADO FUEL AND IRON COMPANY ADMINISTRATIVE COMPLEX

Page 7

United States Department of the Interior, National Park Service

National Historic Landmarks Nomination Form

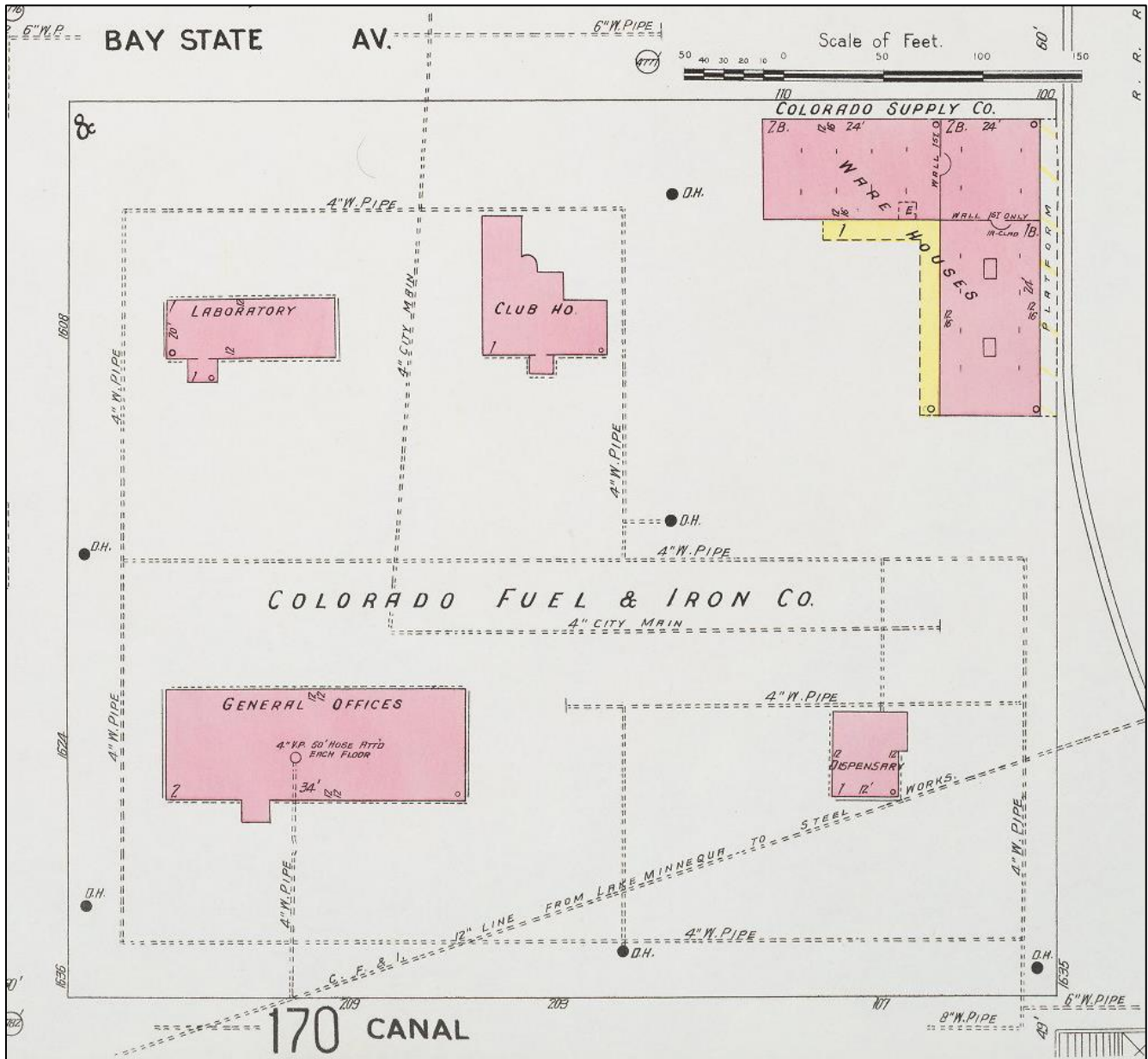


Figure 7. This extract from the 1905 Sanborn fire insurance map shows the administrative block at that date. Courtesy of Sanborn Map Company, Pueblo, Colorado, fire insurance map (New York: Sanborn Map Company, 1905).

NATIONAL HISTORIC LANDMARK NOMINATION

NPS Form 10-934 (Rev. 12-2015)

OMB Control No. 1024-0276 (Exp. 01/31/2019)

COLORADO FUEL AND IRON COMPANY ADMINISTRATIVE COMPLEX

Page 8

United States Department of the Interior, National Park Service

National Historic Landmarks Nomination Form



Figure 8. The extent of the steel plant is shown in this 1918 oblique aerial view. The administrative complex is identified by the arrow. Northern Avenue is near the bottom of the image and railroad tracks pass between the plant and the administrative buildings. Courtesy of *CF&I Industrial Bulletin*, 31 July 1918.

NATIONAL HISTORIC LANDMARK NOMINATION

NPS Form 10-934 (Rev. 12-2015)

OMB Control No. 1024-0276 (Exp. 01/31/2019)

COLORADO FUEL AND IRON COMPANY ADMINISTRATIVE COMPLEX

Page 9

United States Department of the Interior, National Park Service

National Historic Landmarks Nomination Form



Figure 9. This view northeast shows the employment office (foreground) expansion of the dispensary in 1927 prior to the application of stucco. Courtesy of *CF&I Industrial Bulletin*, March 1927, 15.



Figure 10. CF&I's Minnequa Works steel plant covered a large tract in the southern part of Pueblo, Colorado. Courtesy of Denver Public Library, Western History and Genealogy Department, photograph by Theodore Anderson, image number X-10630, ca. 1913-20, Denver, Colorado.

NATIONAL HISTORIC LANDMARK NOMINATION

NPS Form 10-934 (Rev. 12-2015)

OMB Control No. 1024-0276 (Exp. 01/31/2019)

COLORADO FUEL AND IRON COMPANY ADMINISTRATIVE COMPLEX

Page 10

United States Department of the Interior, National Park Service

National Historic Landmarks Nomination Form

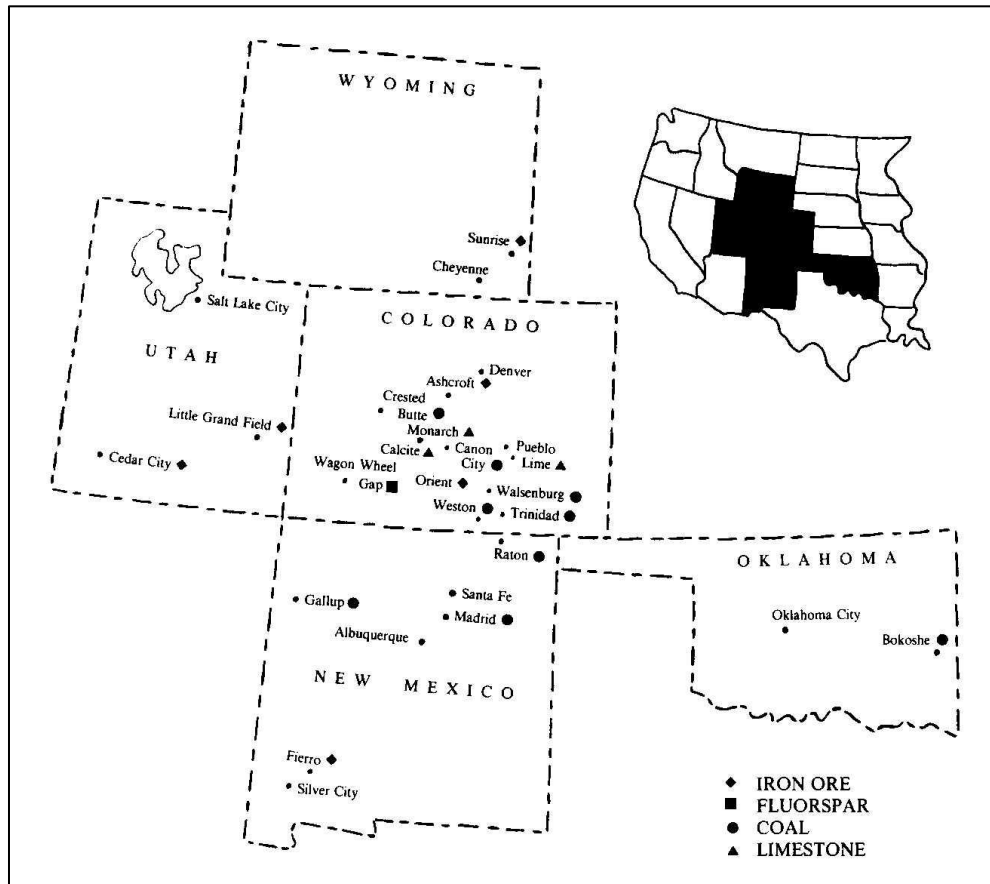


Figure 11. This map shows CF&I operating properties used for the production of iron and steel. Courtesy of Scamehorn, *Mine & Mill*, 2.

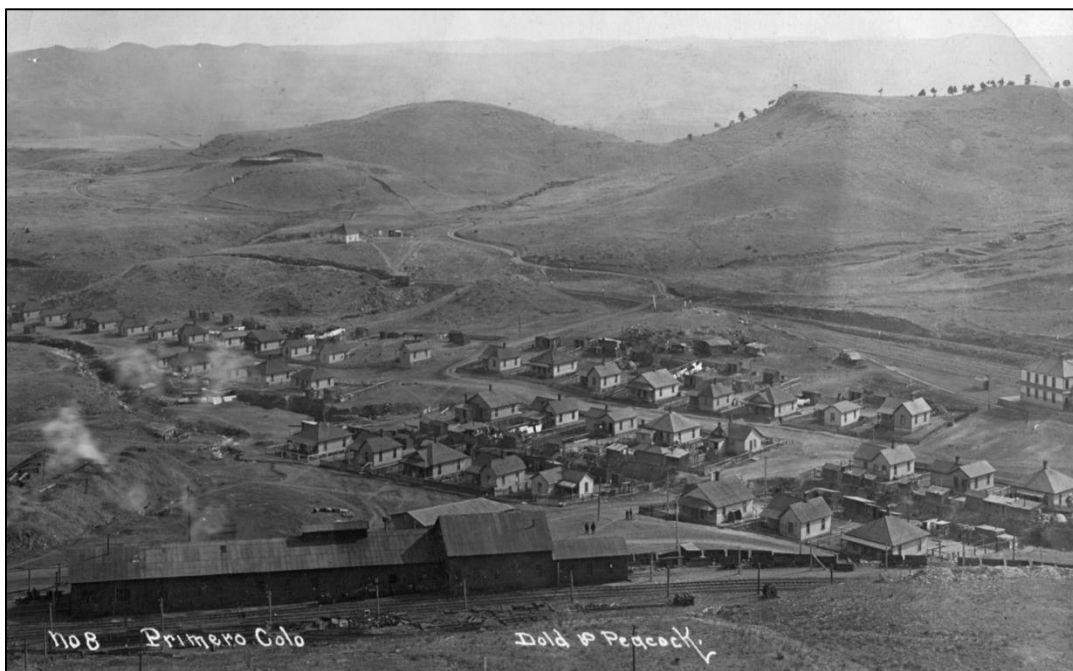


Figure 12. Rows of company houses are shown in this ca. 1915 overview shows Primero in Las Animas County, Colorado, one of CF&I's company coal camps. Courtesy of the authors' historic postcard image collection, Denver, Colorado.