

Hampton National Historic Site - Objects Available

This collection has no provenance related to Hampton's history nor the Ridgely Family. This collection does not fit the park's Scope of Collection. The objects are now available for transfer to another park or other federal agency, or conveyance to non-federal institutions.

Contact for further information:

Melissa Miller, Museum Curator
Hampton National Historic Site
535 Hampton Lane
Towson, MD 21230
melissa_miller@nps.gov

HAMP 4123 DISH, CANDY STAFFORDSHIRE

White earthenware Leeds-type pottery with blue feather rim decoration. Leaf-shaped with embossed leaf design in the bowl. Molded ring handle and three-ball feet underneath. "Staffordshire" set: see HAMP 4124 (candy dish); 5752 (waste bowl); 10244 (pitcher). Badly discolored.
1830-1850
H 2.5 (1"), W 14 (5.5"), L 15 (6") CM



HAMP 4124 DISH, CANDY STAFFORDSHIRE

White earthenware Leeds-type pottery with blue feather rim decoration. Leaf-shaped with embossed leaf design in the bowl. Molded ring handle and three-ball feet underneath. "Staffordshire" set: see HAMP 4123 (candy dish); 10244 (pitcher); 5752 (waste bowl).
1830-1850
H 2.5 (1"), W 14 (5.5") L 15 (6") CM



HAMP 4170 PLATE, COMMEMORATIVE

Octagonal souvenir plate of the Leeds-type. Blue transfer design depicting "Arms of the United States" with an eagle holding arrows & an olive branch & a banner in his beak, surmounting a shield & another banner with "May Success Attend Our Agriculture Trade and Manufacturers."

1800-1820

H 2 (3/4"), DIAM 18 (7 1/7") CM



HAMP 4177 PITCHER STAFFORDSHIRE

Blue & white pottery pitcher with shaped spout & applied scroll handle. Done in the Parisian manner. Embossed beading & grape vine decoration against a blue ground at the neck. Body is blue with embossed hunting scene decoration having trees, hounds, horses & their riders. Base is decorated in a white basketweave pattern.



HAMP 4178 PITCHER, WATER CASTLEFORD

Neck with molded & embossed acanthus leaf spout, brown band, stepped white shoulder, body with glazed brown band having mold oval reserve with man's head, hat, in leaf wreath, on obverse, American eagle holding banner in beak, olive branches & arrows in claws, surmounted by 13 stars & "states chain"; under spout is molded design of "Peace & Plenty," having twisted snakes above pair of spread wings above clasped hands flanked by cornucopia, ribbon banner with copy, basket-weave border, ring foot, applied leaf-embossed scroll handle. Hairline in base.



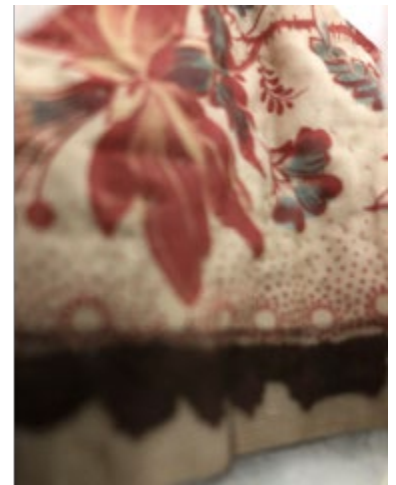
HAMP 4225 CANDELABRUM

Clear molded glass; triple armed; having a flared urn-shaped nozzle above a fluted bobèche with a scalloped rim supporting a descending set of 10 prisms: each consisting of an octagonal faceted prism above an elongated faceted prism. Also having a faceted urn-shaped baluster set into a flared dish fitted with a rotating metal disk from which three scrolled faceted arms extend; each arm has an urn-shaped nozzle above a fluted bobèche with a scalloped rim supporting identical descending sets of 10 faceted prisms. All rest on a larger faceted urn-shaped baluster and an octagonal base. See HAMP 11502.



HAMP 4485 QUILT

Grandmother's Flower Garden pattern. Pieced: each multicolor flower consisting of a row of 6 and outer row of 12 hexagonal pieces around center hexagon, arranged 13 flowers to a row, 13 staggered rows (alternating rows having 1/2 motifs at each end). Bordered on 3 sides by wide band of floral patterned dark brown chintz and strip of "flower-in-vase" chintz. Dark brown chintz very brittle and flaking. Tag: "55-G- 156/ Quilt 6/ Needham." From Box T/J. Conserved 1998 at Harper's Ferry Center.



HAMP 4509 TABLECLOTH

White damask, having flowers & scroll design. Slightly frayed top.



HAMP 4510 TABLECLOTH

White damask, having a leafy scroll & flower design. Slightly stained.



HAMP 4587 NIGHTGOWN

Chemise, having an eyelet border flower and leaf pattern, followed by a diamond pattern and a scalloped edge along neckline and sleeve. Laced-up closing, row of two stitched down tucks at hem. White, short sleeves with two tucks and same embroidery. Holes and stains. Soiled and discolored. Note included: "From Miss Mary Anna Matthews of Cockeysville, Baltimore Co. died 1922 aged 88." [Guest Room. Note missing.] Previously located in HS 1, RM 21 as exhibit prop.



HAMP 4598 QUILT

Chintz, appliqued, having center medallion basket of fruit followed by a series of flowers which are enclosed by an 8-sided border in a floral print, followed by a square border of same floral print. On 3 sides having panels with print of flowers in large swag design. Finished by same floral border. Quilting stitch of interlocking circles ("wedding rings"). All on a light brown background with rose, teal green & brown print. Much conservation mending done. 5 small metal rings bottom.



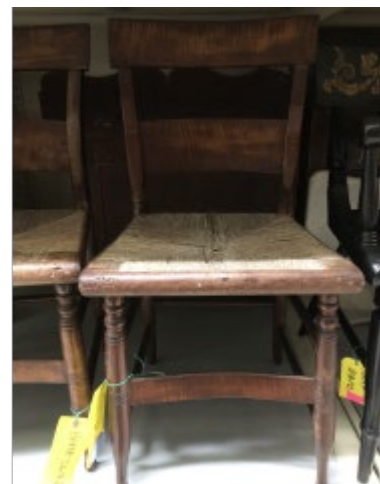
HAMP 5672 CHAIR, DINING

Concave, rectangular top rail, single concave wide horizontal slat, stiles curve backward slightly into turned, splayed back legs, slightly tapered rush seat with front molding, ring-turned & tapered front legs with ball feet, arched flat front stretcher, 2 turned side stretchers, one rear. Rush seat in need of repair. Previously on exhibit in RM 19.



HAMP 5673 CHAIR, DINING

Concave, rectangular top rail, single concave wide horizontal slat, stiles curve backward slightly into turned, splayed back legs, slightly tapered rush seat with front molding, ring-turned & tapered front legs with ball feet, arched flat front stretcher, 2 turned side stretchers, one rear. Hitchcock type. Previously on exhibit in RM 19.



HAMP 5689 CLOCK

Arched hood pediment with brass ball finials at 4 corners, round, glazed door with brass frame, round white metal face with black shaped minute & hour hands & incised black Arabic numerals, flanked by fluted quarter columns with brass mounts, line inlay & bow, garland & bell-flower inlay, brass bail handles & arched openings with brass diamond pattern lattice-work grills on sides, projecting base, brass mounts. Round pierced brass hinged door at rear for servicing. Incised on works: "Made in France," "H & H" & "5208."



HAMP 5697 QUILT

Pieced quilt top of large square blocks, alternating with blocks having 2 larger squares & 2 squares of 4 small squares, arranged so that 4 smaller squares form line (stripe) lengthwise & larger squares form line (stripe) crosswise, triangles to even up the quilt. Large blocks of chintz or "toile" design on cotton. Complete with new backing of pieced quilted floral chintz. Current value given for quilt top only; the modern/new back detracts from the piece. 11/1/2001 Gregory Weidman: Many of the fabrics actually date from the first quarter of the 19th century, even the roller- printed gray floral with honeycomb ground which dates c. 1815; the latest is probably the toile scene with hunters, from the 1820s or 1830s.



HAMP 5726 CARRIAGE, DOLL

Mahogany ball, vase & ring turned handle attached to 2 side rails, attached with screws to back of sleigh-shaped carriage body. Leather hood stretches across carriage back & opens in 3 stages, across 3 wooden ribs. Single plank seat inside carriage. Two 8-spoked barrel wheels, attached underneath to wooden axle. One front 6-spoked barrel wheel with iron attachments underneath. Painted royal blue with yellow striping and interlocking circle motifs on either side, and back. Right side rail broken at handle and mid-point. NOTE: handle needs to be secured.



HAMP 5742 TRAY, SERVING

Footed, rectangular, slightly irregular with applied border of scrolling leaves, flowers & shells. Conforming applied handles, center with engraved scrolling leaves, flowers & pineapples, monogram blank, 4 cylindrical shaped & applied feet.



HAMP 5746 SHAWL

Having an off white background, with a red, pale blue, green, yellow and brown "Paisley" like motif on border. Secondary border and paisley design are in rows. Also having a cotton braid on the edge with silk fringe. NOTE: detached fringe stored in polyethylene bag in object folder. SPMA number 55-PL-256 was attributed to this object on the worksheet, but that refers to a doll bed (HAMP 28122) that has a second SPMA number 83-G-1211; this object in NOT 55-PL-256.



HAMP 5751 BOWL

Leeds-type. Scalloped rim, swirled fluted body on circular ring foot; outside has painted floral band in typical Leeds colors of brown, ochre, reen & blue; additional brown line embellishments. Interior with brown band at rim & ocher star at bottom. Worn, discolorations, chip on inner ring. On seasonal exhibit in RM 22.



HAMP 5752 BOWL, WASTE STAFFORDSHIRE

Deep bowl with swirled body & scalloped rim. White earthenware pottery with blue rim & brown transfer designs inside & out depicting oriental motifs of Chinese figures, trees, hills & pagodas. Inner border at the rim having stylized scroll & leaf decoration. Badly knife-marked, crazed & stained, minor rim chip. "Staffordshire" set: see HAMP 10244 (pitcher); 4123, 4124 (candy dishes).

NOTE: Used seasonally in Needles Room (RM 19).



HAMP 5761 WASHSTAND

High 3-sided splash board with cyma-curve front ends surround square top with 1 large and 1 small hole. Plain skirt, 4 ring turned supports above middle shelf with single drawer with center round brass pull. Four turned legs with ball feet.

Transfer from Morristown National Historical Park.



HAMP 5799 CHAIR

Curved, scrolled-back crest rail, low back with caned square center opening, reeded arms ending in scrolls resting on turned and reeded tapered supports. Rectangular caned seat, wider at front, plain seat rails, front legs turned, tapered and reeded, square back legs splayed. Depth taken at seat. Needs recaning and reglueing. Possibly padoak or teak.



HAMP 6107 LOOP, CURTAIN

a) Three golden yellow small silk tassels; matches HAMP 10736 a. b) Two moss green & gold large silk tassels; heading has intertwined border over double oval bobbins; large gold over smaller green bullion; matches HAMP 10734 a. c) Slate blue with yellow and cream multicolored two ply cord; matches HAMP 10374 c. d) Parts of three large pink, yellow, & cream cotton & silk tassels; heading has V- shaped top with lattice work and braided border; matches HAMP 10686 b & HAMP 10735. e) Yellow with multicolor silk & wool cord; matches HAMP 10686 c & HAMP 10736 d.



HAMP 6108 HANGING, FURNITURE

Ecru, with fish-net weave; topped with binding tape. Edged with 4" stylized fringe. One continuous circle of netting. Tag, ink: "B.M.A. came with Needles furniture/ BMA 53, 226.7,A-B"; opposite side: "55-L-257/ Fishnet canopy (2)." 3X5 card, in ink: "2 valances/ one is hanging on Needles/ four poster bed." A printed card (black print on gray-buff): [Printed, bold, 14pt:] BALTIMORE MUSEUM OF ART/ [Printed:] TITLE [Hand written in ink:] FISH NET CANOPY/ [Printed:] ARTIST [Typed:] John Needles (Baltimore) c.1830/ [Printed:] ACCESSION NUMBER [Typed:] 53.226. [Hand written, ink:]7-A-B/ [Printed:] LOAN NUMBER/ [Printed:] DONOR [Typed:] Gift of Mr. John O. Needles, in/ Memory of Mrs. William A. Dixon/ [Printed:] LENDER." The above all surrounded by a black line border, about 10 point. The tag is on a string by which it is affixed to both cards with a small brass



HAMP 6109 CURTAIN, DOOR

Dark red velvet double faced drapery panels connected at the top. Top is arch shaped with a decorative border sewn on all 4 edges. Having a gold & red undulating ribbon pattern, short fringe on the edge of the border, & 2 weights sewn inside the center panels. Draperies are double faced velvet on both sides gathered at top edge of arch. Sewn in rusted hooks & eyes at the top; 2 red tassels, weighted pulls on side. Dry rot. Torn. See HAMP 8343.



HAMP 8315 PARASOL

Black silk, having black silk lining, black wood handle, ball at end, & a tear drop shaped finial. Silk torn.



HAMP 8317 PARASOL

Pearl gray silk with an ivory handle. Carved ivory top broken. Goes with HAMP 8318.



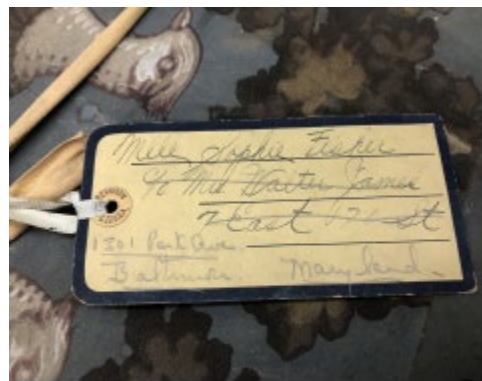
HAMP 8318 COVER, PARASOL

Extra cover for pearl gray parasol. Pink with a pale pink fringe. Goes with HAMP 8317.



HAMP 8341 HATBOX

a) top; b) bottom. Round cardboard box, with a printed paper covered top & bottom. White birds & brown trees on blue background. Top has a label around outside edge, "ABERCROMIE & FITCH CO, GREATEST SPORTING GOODS STORE IN THE WORLD, MADISON AVE AT 45TH ST, NEW YORK." Cardboard tag attached to cotton tie. "TAPPE INC., 9 WEST 57TH ST., E.V./ Mlle SOPHIE FISHER/ 1301 PARK AVE/ BALTIMORE, MARYLAND."



HAMP 8342 HATBOX KNOX

a) top; b) bottom; c) inner form for hat. Oval cardboard box, covered in gold paper. Reading, "KNOX NEW YORK."



HAMP 8344 HAT

Embroidered white, trimmed with black velvet. Black velvet circles crown of hat & ties in a bow at back. Label inside reads: "The French Hat Shop/ Baltimore, Md./ 312 N. Charles St." Lining has begun to shred. Few stains. [See sketch in catalog folder.]



HAMP 8345 HAT

a) brim: having a wire base covered with buckram, & white silk & rows of white lace. b) crown: wire frame covered with buckram. c) white embroidered cover for brim & crown. d) black velvet ribbon for base of crown & bow. Label, "THE FRENCH HAT SHOP/ BALTIMORE, MD./ 312 N. CHARLES ST."



HAMP 8346 HAT

White embroidered brim & crown for hat, also piece of white silk for lining.



HAMP 8382 DRESS

Child's dress, loosely woven of a natural colored linen fabric. Drawn work on sleeves, bodice & bottom of skirt. Embroidered in green, pink & purple. Six fabric covered buttons in back. See small white tag, with string attached: written in ink, "67-G-403."



HAMP 8383 BLOUSE

Off white tape lace (Battenburg) blouse, having shaped bib of tucked net with set of lace medallions, stays in stand-up collar, hooks down back (hooks missing), and pointed sleeve with pearl button on each. No Ridgely provenance.



HAMP 8472 DRESS

Iridescent greenish-gold taffeta one piece dress. Ecrú net is backing cutwork on lapels, sleeves, and lower part of gathered skirt in a geometric floral design. An iridescent red watered taffeta sash wraps around waist & fastens, with a hook & eye in front. The stand up collar, jabot, & bodice inset are made of lace & net. The sleeves are edged with lace & net & are decorated with tiny taffeta covered buttons & fabric covered ties. An off white satin underskirt is hemmed with ecru lace. The lace and net applique covers only half of the skirt back. A chiffon-filled kick pleat in center back of skirt. The red sash is adorned with 2 red taffeta rosettes in the center back at the waist. See sketch of dress in catalog folder.



HAMP 8473 DRESS

Black velvet short dress; sleeveless. Has dropped waist & diagonally cut hemline. Blouson top is accented at the dropped waist with a large off-centered velvet bow & a geometric pattern of heavy gold stitching & rhinestones. A wide sash hangs from the bow which is lined with gold matelasse. On left shoulder a length of fabric hangs which is short in front & extends to the middle of the skirt in the back. This drape is lined with matelasse also. Sketch in catalog folder.



HAMP 8474 DRESS

One piece short dress; sleeveless, unfitted style, with dropped waist. Skirt is French or hydrangea-blue silk. Top is oyster white crepe. Dress is ornately embroidered with gold thread & white, silver & clear beads. The waist is embroidered in a geometric pattern; the blouse & skirt in a teardrop pattern. The blouse back & waist are embroidered but not the skirt. Dress ties in center back with a blue silk sash. See sketch in catalog folder.



HAMP 8477 DRESS

White cotton 3-piece summer dress. Blouse has a band at waist which buttons; beneath band is a ruffle. The front closing, the sleeves, cuff edge & cuff ruffle are all decorated with cut-work embroidery. Has a stand-up collar. Fastens in front. Long, full skirt has 3 tiers of cut work embroidery which covers most of the skirt. There is an apron skirt which ties from back to front. See sketch in catalog folder. This is edged along the hem & the center opening with cut-work embroidery. Some of the embroidery has been cut away and lost. a) bodice; b) underskirt; c) overskirt.



HAMP 8478 DRESS

White dotted Swiss short dress with short sleeves. Off-white Irish lace collar & sleeve edges. Two bands of Irish lace inset in skirt. Straight line styling with little fitting. Dropped waist with a dotted Swiss sash. On sides of dress at waist are rows of eyelet embroidery with small gathers. Period: 1922 or later. Fabric in good condition; needs cleaning. See sketch in catalog folder.



HAMP 8479 BLOUSE

Smock-like blouse of ecru lace & cotton. Has apron front & stand-up collar with lace inset. Lace inset in pattern of squares on front yoke & in vertical lines on back. Cotton between lace insets is tucked. Sleeves are tucked at top & have alternating lace insets & tucked fabric near cuff. Cuff is edged with a lace ruffle & fastens with 2 tiny lace covered buttons. Blouse fastens in back with hooks & eyes & buttons. Sketch in catalog folder. Back of blouse has a short sash attached which ties in the back. Longer in front. Short at waist in back. Back: 9 pearl buttons; 4 hooks & eyes at back neck. Stained.



HAMP 8480 DRESS

Black lace over cream taffeta. a) top: square neck line, 3/4 sleeves & neckline edged in white net. Black satin cummerbund with 2 back satin rosettes & black satin hanging tassels. Back fastens with metal hooks. b) skirt: 3 layers, cream taffeta underskirt & cream chiffon & black lace overskirt. The lace is a floral pattern, skirt fastens with hook & eyes in back. Label, "MARIE POUTOL, IMPORTER, BALTIMORE MARYLAND." Bone stays in top. Silk torn, rotten, soiled. 2-piece dress. Skirt is black lace over off-white crepe & taffeta, with lace flounce at hem. Beneath the lace skirt is a sheer crepe underskirt & under that is a taffeta skirt. Skirt hemline dips to a V in back. The blouse, which is black lace over white net, has a black satin sash at the waist. It has elbow length sleeves & a square neckline with ruffled lace inset. The blouse fastens in back. The inside label reads, "Marie P



HAMP 8481 BLOUSE

CHANEY-BROWN, KATHE

Chiffon blouse, brown chiffon with brown taffeta underneath. Has a stand-up collar. The chiffon is pleated all over but especially down the center front. A V-shaped area beneath the collar is smocked. The sleeves are full & end at rather long cuffs that have four rows of embroidery on them. Fastens in front. Inscription inside waist band closure reads: "Katie Chaney-Brown/ Baltimore, Md." The chiffon in some areas has begun to deteriorate. Bone stays in bodice. Sketch.



HAMP 8482 DRESS

Gold & white striped silk 3-piece dress. Bodice has U-neckline & fastens in front with small covered buttons. Sleeves are 3/4 length & edged with puffed ruffles. Has a stand-up collar & irregular hem. The long skirt is gathered & there is a half-skirt which ties from back to front. There are two extra pieces of fabric. Skirt is lined with stiff woven silk. Bone stays in bodice. See sketch in catalog folder. a) bodice; b) skirt; c) half skirt; d) 2 scraps material. 2 skirts, 1 top, 2 remnants. Good condition, but fabric is quite dirty. Needs to be cleaned.



HAMP 8483 DRESS

Turquoise-blue & tan silk brocade 2-piece dress. Trimmed with turquoise-blue velvet & ecru lace. Some bead work at neck & down front of the blouse. Blouse is mostly ecru lace with appliqued cut-work brocade & velvet attached. The waist is marked by a velvet sash. Closure in front with hooks & eyes. Bone stays in bodice. Period: ca. 1890-1905? Good condition, except for beadwork which is coming apart. Sketch.



HAMP 8484 DRESS CHANEY

Black Chinese sheer silk 2-piece dress. Blouse is embroidered with red & lavender flowers at neck, wrists & in rows across bodice. Sleeves & yoke are sheer & fabric is tucked. There is an embroidered flounce around lower part of yoke. The rest of the blouse, including mandarin style collar, is lined with satin. Label inside blouse reads, "Chaney/ 1111 Linden Ave./ BALTIMORE." Blouse fastens in back with hooks & eyes. Bone stays in bodice. Sketch in folder. Skirt, which is also sheer silk, is embroidered with pink & lavender flowers all over, with a border of pink, red, & gray flowers at hem. There is a sheer black silk underskirt attached to skirt with a pleated flounce that is hemmed with a puffed ruffle. Period: ca. 1890 to 1905. Skirt is in fairly good condition with at least one tear in top skirt. Blouse yoke & collar are badly deteriorated & in need of repair.



HAMP 8485 DRESS CARROLL, E. P.

Brocade satin 2-piece dress. Satin is oyster white with small yellow flowers on it. The fitted bodice has a scoop neck & yellow satin puff sleeves. The bodice back is trimmed with yellow satin extending from shoulder to center back. The bodice fastens in back with hooks & eyes. A label inside reads, "E.P. Carroll/ Baltimore, Md." The skirt is in two pieces having been cleaned around 1940. See sketch in catalog folder. Hems, darts, etc. have been ripped out: the only sewing remaining is some of the seams. Bone stays in bodice. Period: ca. 1890-1900. The yellow satin sleeves are in poor condition as they have become badly shredded. Skirt fabric is in good condition.



HAMP 8486 DRESS

Electric-blue moire silk dress, made from skirt of earlier 2-piece dress. a) Dress: made from skirt that was cut into many pieces & part of it resewn into a (a) short dress around 1924. The short dress is plain blue silk in a wrap around style with a dropped waist & a sash with off-centered bow at the dropped waist. Has short sleeves & a pleated skirt, in front. b) Remnants: some lengths of the bead & thread work were found unattached to the fabric, and 1 small ruffle; many scrap pieces of material. c) long piece of blue silk ruffle which may have edged the skirt hem. For (b), See also HAMP 8487, dress bodice of original 2-piece dress (has matching bead and thread work).



HAMP 8487 BODICE

Electric blue moire silk. Sleeve edges, neckline & lapels trimmed with elaborate handwork of gold thread, beads & small white satin covered balls. Front neckline & placket edged with off-white grosgrain ribbon & decorated with 2 ribbon rosettes. The neckline is edged on the inside with netting. Bodice fastens in front with hooks & eyes. Sleeves are half sleeves & are cut to fit the elbows. A puff of netting & grosgrain ribbon bow decorate the inner edge of each sleeve opening. Bone stays inside bodice. Silk pads in front sides of bodice. Was part of 2-piece dress, see HAMP 8486. Skirt to bodice made into dress: see HAMP 8486a. See sketch in catalog folder.



HAMP 8491 CAPE

a) Blue moire circular cape lined in white quilted satin, slits for arms. b) With hood that has been removed. Hood also lined with quilted satin. c & d) fringe, blue silk; heading has design of blue thin cording in scrolled pattern, hand sewn. Two tags on fringe: 03668-4-4/23 (same number). Sketch in catalog folder.



HAMP 8492 BODICE

Brocade bodice of ruddy peach color. Fastens in front with covered buttons. Has stand-up collar decorated on both sides with satin ribbon tied in a bow on one side & sewed into roses on the other. A satin bow adorns the neckline & the sleeves at the elbow. The satin ribbons are peach & rust color. In the center back at the lower edge is a rose made of the brocade fabric & a bow made of the peach & rust color ribbon. Condition: good. Sketch in catalog folder.



HAMP 9409 GLASS, CORDIAL

Sherry-flute or cordial type, blown, conical bowl with thin walls, narrow stem, round base, pontil mark. Part of set: HAMP 9438-9439 finger bowls; HAMP 9409, 9440 cordials; HAMP 9410-9422 wines; HAMP 9423-9437 goblets. Chipped rim. Crack in base.



HAMP 9410 GLASS, WINE

Cylinder-shaped bowl, very slight cant, etched grapes, leaf & vine and tendril design on bowl, cut panel bowl base & stem, round base, polished pontil. Part of set: HAMP 9438-9439 finger bowls; HAMP 9409, 9440 cordials; HAMP 9410-9422 wines; HAMP 9423-9437 goblets.



HAMP 9411 GLASS, WINE

Cylinder-shaped bowl, very slight cant, etched grapes, leaf & vine and tendril design on bowl, cut panel bowl base & stem, round base, polished pontil. Part of set: HAMP 9438-9439 finger bowls; HAMP 9409, 9440 cordials; HAMP 9410-9422 wines; HAMP 9423-9437 goblets.



HAMP 9412 GLASS, WINE

Cylinder-shaped bowl, very slight cant, etched grapes, leaf & vine and tendril design on bowl, cut panel bowl base & stem, round base, polished pontil. Part of set: HAMP 9438-9439 finger bowls; HAMP 9409, 9440 cordials; HAMP 9410-9422 wines; HAMP 9423-9437 goblets.



HAMP 9413 GLASS, WINE

Cylinder-shaped bowl, very slight cant, etched grapes, leaf & vine and tendril design on bowl, cut panel bowl base & stem, round base, polished pontil. Part of set: HAMP 9438-9439 finger bowls; HAMP 9409, 9440 cordials; HAMP 9410-9422 wines; HAMP 9423-9437 goblets.



HAMP 9414 GLASS, WINE

Cylinder-shaped bowl, very slight cant, etched grapes, leaf & vine and tendril design on bowl, cut panel bowl base & stem, round base, polished pontil. Part of set: HAMP 9438-9439 finger bowls; HAMP 9409, 9440 cordials; HAMP 9410-9422 wines; HAMP 9423-9437 goblets.



HAMP 9415 GLASS, WINE

Cylinder-shaped bowl, very slight cant, etched grapes, leaf & vine and tendril design on bowl, cut panel bowl base & stem, round base, polished pontil. Part of set: HAMP 9438-9439 finger bowls; HAMP 9409, 9440 cordials; HAMP 9410-9422 wines; HAMP 9423-9437 goblets.



HAMP 9416 GLASS, WINE

Cylinder-shaped bowl, very slight cant, etched grapes, leaf & vine and tendril design on bowl, cut panel bowl base & stem, round base, polished pontil. Part of set: HAMP 9438-9439 finger bowls; HAMP 9409, 9440 cordials; HAMP 9410-9422 wines; HAMP 9423-9437 goblets. Chip in base.



HAMP 9417 GLASS, WINE

Cylinder-shaped bowl, very slight cant, etched grapes, leaf & vine and tendril design on bowl, cut panel bowl base & stem, round base, polished pontil. Part of set: HAMP 9438-9439 finger bowls; HAMP 9409, 9440 cordials; HAMP 9410-9422 wines; HAMP 9423-9437 goblets.



HAMP 9418 GLASS, WINE

Cylinder-shaped bowl, very slight cant, etched grapes, leaf & vine and tendril design on bowl, cut panel bowl base & stem, round base, polished pontil. Part of set: HAMP 9438-9439 finger bowls; HAMP 9409, 9440 cordials; HAMP 9410-9422 wines; HAMP 9423-9437 goblets.



HAMP 9419 GLASS, WINE

Cylinder-shaped bowl, very slight cant, etched grapes, leaf & vine and tendril design on bowl, cut panel bowl base & stem, round base, polished pontil. Part of set: HAMP 9438-9439 finger bowls; HAMP 9409, 9440 cordials; HAMP 9410-9422 wines; HAMP 9423-9437 goblets.



HAMP 9420 GLASS, WINE

Cylinder-shaped bowl, very slight cant, etched grapes, leaf & vine and tendril design on bowl, cut panel bowl base & stem, round base, polished pontil. Part of set: HAMP 9438-9439 finger bowls; HAMP 9409, 9440 cordials; HAMP 9410-9422 wines; HAMP 9423-9437 goblets.



HAMP 9421 GLASS, WINE

Cylinder-shaped bowl, very slight cant, etched grapes, leaf & vine and tendril design on bowl, cut panel bowl base & stem, round base, polished pontil. Part of set: HAMP 9438-9439 finger bowls; HAMP 9409, 9440 cordials; HAMP 9410-9422 wines; HAMP 9423-9437 goblets.



HAMP 9422 GLASS, WINE

Cylinder-shaped bowl, very slight cant, etched grapes, leaf & vine and tendril design on bowl, cut panel bowl base & stem, round base, polished pontil. Part of set: HAMP 9438-9439 finger bowls; HAMP 9409, 9440 cordials; HAMP 9410-9422 wines; HAMP 9423-9437 goblets. One of 13 remaining from original 15 in gift.



HAMP 9423 GOBLET

Bucket-shaped bowl with etched & engraved grapes, leaf & tendril pattern, cut facets at bowl bottom corresponding to cut panels on narrow straight stem, round base with polished pontil. Free blown bowl with drawn stem & tooled foot. Part of set: HAMP 9438-9439 finger bowls; HAMP 9410-9422 wines; HAMP 9409, 9440 cordials; HAMP 9423-9437 goblets. One of 15.



HAMP 9424 GOBLET

Bucket-shaped bowl with etched & engraved grapes, leaf & tendril pattern, cut facets at bowl bottom corresponding to cut panels on narrow straight stem, round base with polished pontil. Free blown bowl with drawn stem & tooled foot. Part of set: HAMP 9438-9439 finger bowls; HAMP 9410-9422 wines; HAMP 9409, 9440 cordials; HAMP 9423-9437 goblets. One of 15. Chipped rim.



HAMP 9425 GOBLET

Bucket-shaped bowl with etched & engraved grapes, leaf & tendril pattern, cut facets at bowl bottom corresponding to cut panels on narrow straight stem, round base with polished pontil. Free blown bowl with drawn stem & tooled foot. Part of set: HAMP 9438-9439 finger bowls; HAMP 9410-9422 wines; HAMP 9409, 9440 cordials; HAMP 9423-9437 goblets. One of 15.



HAMP 9426 GOBLET

Bucket-shaped bowl with etched & engraved grapes, leaf & tendril pattern, cut facets at bowl bottom corresponding to cut panels on narrow straight stem, round base with polished pontil. Free blown bowl with drawn stem & tooled foot. Part of set: HAMP 9438-9439 finger bowls; HAMP 9410-9422 wines; HAMP 9409, 9440 cordials; HAMP 9423-9437 goblets. One of 15.



HAMP 9427 GOBLET

Bucket-shaped bowl with etched & engraved grapes, leaf & tendril pattern, cut facets at bowl bottom corresponding to cut panels on narrow straight stem, round base with polished pontil. Free blown bowl with drawn stem & tooled foot. Part of set: HAMP 9438-9439 finger bowls; HAMP 9410-9422 wines; HAMP 9409, 9440 cordials; HAMP 9423-9437 goblets. One of 15.



HAMP 9428 GOBLET

Bucket-shaped bowl with etched & engraved grapes, leaf & tendril pattern, cut facets at bowl bottom corresponding to cut panels on narrow straight stem, round base with polished pontil. Free blown bowl with drawn stem & tooled foot. Part of set: HAMP 9438-9439 finger bowls; HAMP 9410-9422 wines; HAMP 9409, 9440 cordials; HAMP 9423-9437 goblets. One of 15.



HAMP 9429 GOBLET

Bucket-shaped bowl with etched & engraved grapes, leaf & tendril pattern, cut facets at bowl bottom corresponding to cut panels on narrow straight stem, round base with polished pontil. Free blown bowl with drawn stem & tooled foot. Part of set: HAMP 9438-9439 finger bowls; HAMP 9410-9422 wines; HAMP 9409, 9440 cordials; HAMP 9423-9437 goblets. One of 15.



HAMP 9430 GOBLET

Bucket-shaped bowl with etched & engraved grapes, leaf & tendril pattern, cut facets at bowl bottom corresponding to cut panels on narrow straight stem, round base with polished pontil. Free blown bowl with drawn stem & tooled foot. Part of set: HAMP 9438-9439 finger bowls; HAMP 9410-9422 wines; HAMP 9409, 9440 cordials; HAMP 9423-9437 goblets. One of 15.



HAMP 9431 GOBLET

Bucket-shaped bowl with etched & engraved grapes, leaf & tendril pattern, cut facets at bowl bottom corresponding to cut panels on narrow straight stem, round base with polished pontil. Free blown bowl with drawn stem & tooled foot. Part of set: HAMP 9438-9439 finger bowls; HAMP 9410-9422 wines; HAMP 9409, 9440 cordials; HAMP 9423-9437 goblets. One of 15.



HAMP 9432 GOBLET

Bucket-shaped bowl with etched & engraved grapes, leaf & tendril pattern, cut facets at bowl bottom corresponding to cut panels on narrow straight stem, round base with polished pontil. Free blown bowl with drawn stem & tooled foot. Part of set: HAMP 9438-9439 finger bowls; HAMP 9410-9422 wines; HAMP 9409, 9440 cordials; HAMP 9423-9437 goblets. One of 15.



HAMP 9433 GOBLET

Bucket-shaped bowl with etched & engraved grapes, leaf & tendril pattern, cut facets at bowl bottom corresponding to cut panels on narrow straight stem, round base with polished pontil. Free blown bowl with drawn stem & tooled foot. Part of set: HAMP 9438-9439 finger bowls; HAMP 9410-9422 wines; HAMP 9409, 9440 cordials; HAMP 9423-9437 goblets. One of 15.



HAMP 9434 GOBLET

Bucket-shaped bowl with etched & engraved grapes, leaf & tendril pattern, cut facets at bowl bottom corresponding to cut panels on narrow straight stem, round base with polished pontil. Free blown bowl with drawn stem & tooled foot. Part of set: HAMP 9438-9439 finger bowls; HAMP 9410-9422 wines; HAMP 9409, 9440 cordials; HAMP 9423-9437 goblets. One of 15.



HAMP 9435 GOBLET

Bucket-shaped bowl with etched & engraved grapes, leaf & tendril pattern, cut facets at bowl bottom corresponding to cut panels on narrow straight stem, round base with polished pontil. Free blown bowl with drawn stem & tooled foot. Part of set: HAMP 9438-9439 finger bowls; HAMP 9410-9422 wines; HAMP 9409, 9440 cordials; HAMP 9423-9437 goblets. One of 15.



HAMP 9436 GOBLET

Bucket-shaped bowl with etched & engraved grapes, leaf & tendril pattern, cut facets at bowl bottom corresponding to cut panels on narrow straight stem, round base with polished pontil. Free blown bowl with drawn stem & tooled foot. Part of set: HAMP 9438-9439 finger bowls; HAMP 9410-9422 wines; HAMP 9409, 9440 cordials; HAMP 9423-9437 goblets. One of 15.



HAMP 9437 GOBLET

Bucket-shaped bowl with etched & engraved grapes, leaf & tendril pattern, cut facets at bowl bottom corresponding to cut panels on narrow straight stem, round base with polished pontil. Free blown bowl with drawn stem & tooled foot. Part of set: HAMP 9438-9439 finger bowls; HAMP 9410-9422 wines; HAMP 9409, 9440 cordials; HAMP 9423-9437 goblets. One of 15.



HAMP 9440 GLASS, CORDIAL

Sherry-flute or cordial type, blown, conical bowl with thin walls, engraved bands, loop pattern & floral pattern, near rim, narrow stem, round base, pontil visible. Part of set: HAMP 9438-9439 finger bowls; HAMP 9409, 9440 cordials; HAMP 9410- 9422 wines; HAMP 9423-9437 goblets. Mended at base. Minor chip on rim.



HAMP 9441 PLATE

Circular, scalloped edge, shallow bowl, pierced floral-and-dot design on paneled rim, green & gilt floral-and-leaf overglaze decoration on rim extending into bowl & in center of bowl. Cream ware, Wedgwood. Small chip on base rim. Some wear on overglaze decoration.



HAMP 9719 GLASS, WINE

Hock, amber, gilt rim, short round bowl, enameled design of scrolling leaves & Moorish arches in gilt, yellow, white & red; tall hollow knopped stem, circular domed foot with white dot line border; one of 6. See HAMP 9719-9724.



HAMP 9720 GLASS, WINE

Hock, amber, gilt rim, short round bowl, enameled design of scrolling leaves & Moorish arches in gilt, yellow, white & red; tall hollow knopped stem, circular domed foot with white dot line border; one of 6. See HAMP 9719-9724.



HAMP 9721 GLASS, WINE

Hock, amber, gilt rim, short round bowl, enameled design of scrolling leaves & Moorish arches in gilt, yellow, white & red; tall hollow knopped stem, circular domed foot with white dot line border; one of 6. See HAMP 9719-9724.



HAMP 9722 GLASS, WINE

Hock, amber, gilt rim, short round bowl, enameled design of scrolling leaves & Moorish arches in gilt, yellow, white & red; tall hollow knopped stem, circular domed foot with white dot line border; one of 6. See HAMP 9719-9724.



HAMP 9723 GLASS, WINE

Hock, amber, gilt rim, short round bowl, enameled design of scrolling leaves & Moorish arches in gilt, yellow, white & red; tall hollow knopped stem, circular domed foot with white dot line border; one of 6. See HAMP 9719-9724.



HAMP 9724 GLASS, WINE

Hock, amber, gilt rim, short round bowl, enameled design of scrolling leaves & Moorish arches in gilt, yellow, white & red; tall hollow knopped stem, circular domed foot with white dot line border; one of 6. See HAMP 9719-9724.



HAMP 9725 GLASS, WATER

Flared or trumpet shaped, gilt band at rim, gilt C-scroll & anthemia, sprays of flower & leaves, six-sided stem with notched edges, circular pedestal base with gilt scrolling leaf & anthemia decoration, gilt rim, one of 6. See HAMP 9725-9729. See HAMP 10148 (broken).



HAMP 9726 GLASS, WATER

Flared or trumpet shaped, gilt band at rim, gilt C-scroll & anthemia, sprays of flower & leaves, six-sided stem with notched edges, circular pedestal base with gilt scrolling leaf & anthemia decoration, gilt rim, one of 6. See HAMP 9725-9729. See HAMP 10148 (broken).



HAMP 9727 GLASS, WATER

Flared or trumpet shaped, gilt band at rim, gilt C-scroll & anthemia, sprays of flower & leaves, six-sided stem with notched edges, circular pedestal base with gilt scrolling leaf & anthemia decoration, gilt rim, one of 6. See HAMP 9725-9729. See HAMP 10148 (broken).



HAMP 9728 GLASS, WATER

Flared or trumpet shaped, gilt band at rim, gilt C-scroll & anthemia, sprays of flower & leaves, six-sided stem with notched edges, circular pedestal base with gilt scrolling leaf & anthemia decoration, gilt rim, one of 6. See HAMP 9725-9729. See HAMP 10148 (broken).



HAMP 9729 GLASS, WATER

Flared or trumpet shaped, gilt band at rim, gilt C-scroll & anthemia, sprays of flower & leaves, six-sided stem with notched edges, circular pedestal base with gilt scrolling leaf & anthemia decoration, gilt rim, one of 6. See HAMP 9725-9729. See HAMP 10148 (broken).



HAMP 9734 GLASS, WINE

Hock, trumpet-shaped with etched grape vines, leaf & grapes, thin stem, round base. Set, see HAMP 9735-9740.



HAMP 9735 GLASS, WINE

Hock, trumpet-shaped with etched grape vines, leaf & grapes, thin stem, round base. Set, see HAMP 9734-9740.



HAMP 9736 GLASS, WINE

Hock, trumpet-shaped with etched grape vines, leaf & grapes, thin stem, round base. Set, see HAMP 9734-9740.



HAMP 9737 GLASS, WINE

Hock, trumpet-shaped with etched grape vines, leaf & grapes, thin stem, round base. Set, see HAMP 9734-9740. Lip rim chipped.



HAMP 9738 GLASS, WINE

Hock, trumpet-shaped with etched grape vines, leaf & grapes, thin stem, round base. Set, see HAMP 9734-9740. Lip rim is chipped. Base rim is chipped.



HAMP 9739 GLASS, WINE

Hock, trumpet-shaped with etched grape vines, leaf & grapes, thin stem, round base. Set, see HAMP 9734-9740. Lip rim is slightly chipped.



HAMP 9740 GLASS, WINE

Hock, trumpet-shaped with etched grape vines, leaf & grapes, thin stem, round base. Set, see HAMP 9734-9740.



HAMP 10115 TEACUP

Pink lustreware tea bowl with no handle & round pedestal base. White interior with pink lustre band near the rim. Exterior is decorated with a wide pale pink band with pink lustre & green scrolling acanthus leaf design. See HAMP 10115-10124.



HAMP 10116 TEACUP

Pink lustreware tea bowl with no handle & round pedestal base. White interior with pink lustre band near the rim. Exterior is decorated with a wide pale pink band with pink lustre & green scrolling acanthus leaf design. See HAMP 10115-10124.



HAMP 10117 TEACUP

Pink lustreware tea bowl with no handle & round pedestal base. White interior with pink lustre band near the rim. Exterior is decorated with a wide pale pink band with pink luster & green scrolling acanthus leaf design. See HAMP 10115-10124.



HAMP 10118 TEACUP

Pink lustreware tea bowl with no handle & round pedestal base. White interior with pink lustre band near the rim. Exterior is decorated with a wide pale pink band with pink luster & green scrolling acanthus leaf design. See HAMP 10115-10124.



HAMP 10119 TEACUP

Pink lustreware tea bowl with no handle & round pedestal base. White interior with pink lustre band near the rim. Exterior is decorated with a wide pale pink band with pink luster & green scrolling acanthus leaf design. See HAMP 10115-10124. Small rim chip.



HAMP 10120 SAUCER

Pink lustreware circular deep-bowled saucer with center reserve featuring pink lustre twisted vine decoration. Sides are decorated with a wide pale pink band with pink lustre and green scrolling acanthus leaf design. Pink lustre band near the rim. See HAMP 10115-10124.



HAMP 10121 SAUCER

Pink lustreware circular deep-bowled saucer with center reserve featuring pink lustre twisted vine decoration. Sides are decorated with a wide pale pink band with pink lustre and green scrolling acanthus leaf design. Pink lustre band near the rim. See HAMP 10115-10124.



HAMP 10122 SAUCER

Pink lustreware circular deep-bowled saucer with center reserve featuring pink lustre twisted vine decoration. Sides are decorated with a wide pale pink band with pink lustre and green scrolling acanthus leaf design. Pink lustre band near the rim. See HAMP 10115-10124.



HAMP 10123 SAUCER

Pink lustreware circular deep-bowled saucer with center reserve featuring pink lustre twisted vine decoration. Sides are decorated with a wide pale pink band with pink lustre and green scrolling acanthus leaf design. Pink lustre band near the rim. See HAMP 10115-10124.



HAMP 10124 SAUCER

Pink lustreware circular deep-bowled saucer with center reserve featuring pink lustre twisted vine decoration. Sides are decorated with a wide pale pink band with pink lustre and green scrolling acanthus leaf design. Pink lustre band near the rim. See HAMP 10115-10124. Faded and badly stained.



HAMP 10146 URN

Greek classical form, handles with swan neck-and-head attachments rise above rim, stylized palm leaf border at rim, stylized anthemion motifs flank raised medallions on neck, stylized anthemion motifs flank classical figures in relief on body, small round foot with panel pattern, square marble stepped base with four bronze bracket feet. Comparable for style & valuation: see Sotheby's Sale # 5559, 21 March 1987, "Volute," # 194. See HAMP 10147.



HAMP 10147 URN

Greek classical form, handles with swan neck-and-head attachments rise above rim, stylized palm leaf border at rim, stylized anthemion motifs flank raised medallions on neck, stylized anthemion motifs flank classical figures in relief on body, small round foot with panel pattern, square marble stepped base with four bronze bracket feet. Comparable for style & valuation: Sotheby's Sale # 5559, 21 March 1987, "Volute," # 194. See HAMP 10146.



HAMP 10148 GOBLET

Flared or trumpet shaped, gilt band at rim, gilt C-scroll and anthemion, sprays of flower & leaves, six-sided stem with notched edges, circular pedestal base with gilt scrolling leaf & anthemion decoration. Gilt rim. One of a set of six. Broken in several pieces. See HAMP 9725-9729.



HAMP 10154 BOOKCASE

a) Rectangular bookcase section with two rectangular hinged & glazed doors with 6 panes each (2 over 2 over 2), with molded edge muntins & 1 brass keyhole opening into interior fitted for moveable shelves. b) Lower cupboard section with molded frame for bookcase, two paneled cupboard doors with 1 brass keyhole opening onto combination drawers & shelves, plinth base with cyma scroll bracket feet in front, plain block feet in rear. Back panels on bottom loose. Shelves missing. Cornice or pediment probably missing.



HAMP 10155 CABINET

Chinese lacquer; rectangular, molded overhanging cornice over conforming case with 2 paneled cupboard doors, each with 3 chamfered-corners; applied center panels & brass escutcheon opening onto 4 shelves over 1 long & 2 short drawers with round ivory pulls. Brass bail handles on paneled exterior sides. American plinth base supported by heavily carved animal paw feet with fruit & foliage brackets in front, plain turned-post legs in rear. Exterior front and sides decorated in gold on black lacquer. Flowers, vines, fruit baskets, birds and foliage surround various Oriental garden scenes with figures, structures, boats, bridges and trees. Interior shelf ends, drawer fronts and door panels also decorated in gold. Some cracking and lifting of lacquer. One bail handle missing. Parts are located in HS 1, RM 24, DW, DR 5.



HAMP 10156 SIDEBOARD

Serpentine top with conforming case. Center portion has 3 equal height long drawers, beaded with line and band inlay, and diamond escutcheons and ring pulls with rosette shields. Center drawers flanked by pair of deep drawers with conforming inlay, escutcheons and pulls, 4 tapered legs in front, two in rear. Brasses appear to be original. White label attached to back, "Sideboard/ 55-g-77/ Mrs. Caleb Athey." Ref.: Sumpter Priddy & Luke Beckerdite 1989 "of the period, western VA."



HAMP 10159 CHAIR, EASY

Flat rolled-back top rail of rectangular upholstered back curves into rounded back of seat. Upholstered rectangular arms extend to front seat rail; deep rectangular seat, back and seat cushions. Splayed legs, casters.



HAMP 10217 FLOWERPOT

Pink lustre flower pot with molded ring handles & out-turned molded rim. See HAMP 10217-10218.



HAMP 10218 FLOWERPOT

Pink lustre flower pot with molded ring handles & out-turned molded rim. See HAMP 10217-10218.



HAMP 10224 PLATTER STAFFORDSHIRE

Rectangular platter with rounded corners. Blue transfer design depicting "Landing of Gen. Lafayette" in New York on August 16, 1824. Shows a harbor scene with tall ships, a steam ship, sailing vessels, a military fort & soldiers riding horseback & firing cannons. Outer edge of the platter is decorated with flower, leaf & beading motifs.



HAMP 10226 PLATE

Circular child's plate. White porcelain with gilt alphabet decoration at the out-flared rim. Center reserve having polychrome decoration of "Sunbonnet Sue" serving tea to a young male companion.



HAMP 10229 TEACUP

Circular, white lustreware with pink flower & gilt leaf decoration, gilt & cobalt blue upper & lower bands in the interior. Handle is missing. Loss of paint & gilt.



HAMP 10264 CHAIR, SLIPPER

Has scrolled back and trapezoidal seat; curved and veneered side seat rails; also has a bowed and veneered front seat rail with applied center fluted panel with shell pendant below flanked by a carved rosette at each corner which forms the head of tapered front legs which are stepped and turned with ribbed balls terminating in brass casters. Rear legs are splayed. Upholstered in rose velvet.



HAMP 10271 DECANTER

Clear cut glass decanter having bulbous shape with long narrow neck & slightly out-flared rim & tear-drop stopper. Diamond pattern throughout, fluted near the rim, starburst design at the bottom. Stopper has chips and is broken at the bottom.



HAMP 10272 DECANTER

Blown & molded clear glass with bulbous shape, tapered neck, out-flared rim & spherical stopper. Body having four bands of geometric decoration, including vertical lines, diagonal lines & alternating starburst & diamond patterns. Stopper also has bands of geometric decorations. Contains glass chips. Broken at the rim.



HAMP 10275 CANDLESTICK

Pressed glass candlestick having hexagonal panels throughout; bud nozzle, waisted shoulder, tear drop baluster, knopped stem & an hexagonal base.



HAMP 10280 TAZZA MEISSEN

White porcelain fruit compote having gilt grape & grape vine embellishments throughout. Bowl has scalloped rim & is attached to a knopped stem with circular base also having gilt grapevine embellishments. Riveted repair. Some loss of gilt. See HAMP 10281 for mate.



HAMP 10281 TAZZA MEISSEN

White porcelain fruit compote having gilt grape & grape vine embellishments throughout. Bowl has scalloped rim & is attached to a knopped stem with circular base also having gilt grapevine embellishments. Riveted repair. Small piece missing. Some loss of gilt. See HAMP 10280 for mate.



HAMP 10282 BOWL, FRUIT DAVENPORT

Fruit bowl on a footed circular base with out-flared rim & applied twisted vine handle on each side. Decorated in an Oriental manner in shades of peach, orange, cobalt blue & gilt & depicting flowers, branches, leaves & geometric motifs. Marked, "Davenport Longport Staffordshire Stone China" underneath. See HAMP 1268, "Davenport."



HAMP 10290 PLATTER

Oval platter having plum-colored band near the rim, gilt rim & reticulated border. Interior reserve is surrounded by a plum & gilt geometric design & the center is marked with initials, now illegible, also surrounded by a gilt oval border. Loss of gilt, stained.



HAMP 10293 BASIN

Divided oval basin with applied molded handle in the center & out-flared rim. Cream-colored porcelain with polychrome decoration of scenes of children at work & play. Geometric border in brown around the rim. See HAMP 10293-10296; HAMP 11777. Part of a child's toilet set. Broken along one side (pieces inside).



HAMP 10294 DISH, SOAP

Rectangular soap dish with flared sides. Cream-colored porcelain with polychrome decoration of children's toys. Geometric border around the rim in brown. See HAMP 10293-10296; HAMP 11777. Part of a child's toilet set.



HAMP 10295 PITCHER

Tall pitcher with shaped spout & applied handle. Cream-colored porcelain with polychrome decoration of scenes of children at work & play. Decorated with a brown band at the rim & base & handle has brown embellishments. See HAMP 10293-10296; HAMP 11777. Part of a child's toilet set.



HAMP 10296 PITCHER

Bulbous-shaped pitcher with shaped spout, curved applied handle & metal-hinged lid. Cream-colored porcelain with polychrome decoration of scenes of children at work & play. Decorated at the base, rim & handle with brown banding. Lid has a brown ball finial. Glued repair, hairline cracks, chips at rim. See HAMP 10293- 10296; HAMP 11777. Part of a child's toilet set.



HAMP 10300 CANDELABRUM

WILCOX SILVERPLATE CO.

Silverplate five candle candelabrum with compagna-shaped nozzle with beaded rim in the center, bale shoulder, panelled tapered baluster, domed hexagonal base.

Attached to the shoulder are 4 spiralling arms each having a compagna-shaped nozzle with beaded rim. See HAMP 10398.



HAMP 10398 CANDELABRUM

WILCOX SILVERPLATE CO.

Silverplate five candle candelabrum with compagna-shaped nozzle with beaded rim in the center, bale shoulder, panelled tapered baluster, domed hexagonal base.

Attached to the shoulder are 4 spiralling arms each having a compagna-shaped nozzle with beaded rim. See HAMP 10300.



HAMP 10405 SAUCER SEVRES

Circular saucer with gilt geometric decoration at the rim & at the center reserve. Sides of the saucer are decorated in shades of green, gold, blue, yellow & orange & depict leaves & birds between three oval medallions having classical motifs. See HAMP 10406. Hairline cracks, glued repair, rim chip.



HAMP 10406 SAUCER SEVRES

Circular saucer with gilt geometric decoration at the rim & at the center reserve. Sides of the saucer are decorated in shades of green, gold, blue, yellow & orange & depict leaves & birds between three oval medallions having classical motifs. See HAMP 10405. Riveted repair, major rim chip.



HAMP 10517 CURTAIN

Panel, having a purple & white copperplate print, depicting a hunting scene of horses, men, hounds, & a tavern sign reading "BON VIN ET BIERE"; also depicting the letters "FP" on rock. Patched, torn, pieced. c) looks like nail holes at top of arched shape. See HAMP 10632.



HAMP 10527 DOLL

Printed cotton doll. Printed on stomach: "MY NAME IS MISS KORN-KRISP." Hair, face, underwear, hands, socks, & shoes printed on body. Wearing blue & white striped homespun smock & pantaloons, stuffed with cotton. Toes worn, neck split. Used for "KORN-KRISP" cereal promotion. From Needles Room.



HAMP 10528 PURSE

Beaded bag, having black and blue diamond-shaped glass beads with blue, red, and gold designs. Flowers and leaves, beaded tassel at bottom. Black cord handles. No Ridgely provenance.



HAMP 10529 PURSE

Gold metal "Reticule," having scroll design & 3 turquoise colored stones on top. Off-white silk damask. Worn, stained, holes. No Ridgely provenance.



HAMP 10531 FAN

Black carved wood, covered with black silk organdy handpainted with birds, & flowers. Silk cord hanging from handle. Broken, holes.



HAMP 10532 CASE

Yellow silk, handpainted with gray sprays of flowers. Bound in yellow and gold cord. Loops on corners & on turned back edge of pillow. Goes with HAMP 10533 & 10534. No Ridgely provenance.



HAMP 10533 CASE

Yellow silk rectangle, lined in champagne silk. Bound in yellow & gold cord, having handpainted sprays of gray flowers. One corner turned back. Buttoned closed with yellow silk button.

Possibly used to hold & store jewelry. Faded. Goes with HAMP 10532 & 10534.

No Ridgely provenance.



HAMP 10534 CASE, JEWELRY

Yellow silk rectangle, lined in champagne silk. Bound in yellow and gold cord, having handpainted sprays of gray flowers. One corner turned back. Stuffed with cotton. Folds in half to close waving a button (missing). Possibly a jewelry holder. Stained.

Goes with HAMP 10532 & 10533.

No Ridgely provenance.



HAMP 10535 TABLECLOTH

White round tape lace cloth, having five central cotton medallions with cutwork. Tape lace pattern: leaves & bunches of grapes.



HAMP 10557 SHEET

Plain, white, flat, rectangular. Written in ink: "E. J. AEINBOLT"(?); "192." Stained.



HAMP 10558 QUILT

Having star in center surrounded by quilted feather wreaths. Border of nine square diamonds; notched at two corners for bed post. Main colors: olive green, beige, pink & red. Blue cotton backing. Color photo taken. Good for exhibit.



HAMP 10562 SHAWL

"Paisley." Having an off-white background, with a narrow border on four sides of red & blue; at two ends a pattern of large paisleys (blue and red) made to look like trees with birds on branches at bottom. Writing embroidered in red, "71<>.^37." Tag: "REV. CC. CLARK." Soiled, many moth holes. Torn, worn, mended.



HAMP 10563 NIGHTGOWN

White, having two rows of narrow tucks down front, separated by three strips of fine white embroidery and cutwork; also same on scalloped cuffs. Small ruffle (mostly missing) on narrow banded collar. Torn, holes, discolored.



HAMP 10564 NIGHTGOWN

White, having a bib of narrow tucks, a narrow collar with embroidered wings, white embroidery on cuffs, & mother-of-pearl buttons. Holes and stains.



HAMP 10565 SCARF, BUREAU

Beige, having four drawn work strips, & a machine lace scalloped border on three sides.



HAMP 10566 CANOPY

Of white muslin with ball fringe. Pocket top on left side. Discolored. Goes with HAMP 10567, 10568.

**HAMP 10567 CANOPY**

Of white muslin with ball fringe. Pocket top on right side. Discolored. Goes with HAMP 10566, 10568.

**HAMP 10568 RUFFLE, DUST**

White muslin; ruffled with ball fringe on hem. Discolored. Goes with HAMP 10566 & 10567.

**HAMP 10569 SHEET**

White, flat, rectangular. Of 2 strips sewn together; with red cross stitch "L B I." Discolored, stained, mended.



HAMP 10570 SHEET

White, flat, rectangular. Of 2 strips sewn together; with red cross stitch: "L B 3." Discolored, stained, holes.



HAMP 10571 SHEET

White, flat, rectangular. Two strips sewn together. Stained, mended, torn, worn.



HAMP 10572 SHEET

Plain, white, flat, rectangular. Two strips of fabric sewn together in middle. Embroidered in blue cross stitch: "2 MW 1816." Some stains.



HAMP 10573 SHEET

White, flat, rectangular. Two strips sewn together in middle. Embroidered in blue cross stitch: "2 MW 1816."



HAMP 10574 SHEET

Plain, white, flat, rectangular. Machine stitched on one side; hand hemmed on 3 sides. Laundry marks, "EG" [in red script], "G," "C2322-22-1."



HAMP 10575 SHAWL

Black wool with handknotted black silk fringe. Holes.



HAMP 10578 TAPESTRY

Brown cotton, with brown cotton copperplate printed fabric attached; depicting two scenes: 1) four young women playing hide and seek; 2) allegorical scene of three ladies giving fruit to a man. Mended, disintegrating. Second wooden rod cannot be removed.



HAMP 10590 BLANKET

Cream with red borders & carnations in circles. Faded, holes. See HAMP 10591.



HAMP 10591 BLANKET

Cream with red borders, & carnations in circles. Faded, holes.
See HAMP 10590.



HAMP 10612 PILLOW

Oval pink pillow, having beige lace cover with flower design
& ruffles.

This object had SPMA number 56-TL-272 attributed to it, but
that number referred to a baby crib that was removed in 1979.



HAMP 10632 CURTAIN

Copperplate fabric; brown & white fading to purple & white;
depicting hunting scenes of dogs, horses, hunters, & a tavern
with sign, "BON VINS ET BIERES"; one piece of another fabric
(same colors) added, which has a tropical scene with mother
and child, signed "PP." Holes. Metal ring at bottom. See HAMP
10517.



HAMP 10633 MAT, PLACE

Beige with hemstitched edge and plain center. See HAMP 10634.

**HAMP 10634 MAT, PLACE**

Beige with hemstitched edge and plain center. See HAMP 10633.

**HAMP 10637 FAN**

Tortoise shell, with black chantilly lace & net backing.



HAMP 10638 FAN

Painted wood, frame covered with paper; having gold edges, flowers in pink, green, & rose, & sprinkled with glitter. Metal handle.



HAMP 10639 FAN

Carved wood, covered with painted black silk. Over painted with birds & flowers in blue, rose & yellow. Sprinkled with glitter. Trimmed in silver.



HAMP 10640 FAN

Beige Brussels lace in a floral pattern. Net backing on ivory colored frame made of linen & silk. Metal handle with two rhinestones.



HAMP 10641 FAN

Brown wood, with cutouts & an inlaid gold & silver metal geometric design. Brown silk ribbon laces the fan's ribs together. See HAMP 10641, 10642, 10643.



HAMP 10642 FAN

Ivory & silk organza; hand painted in silver; scene showing a bride, two doves surrounded by flowers. Decorated with sequins; "RECUERDO" carved into handle. Metal hinge with silk cord. Net backing.



HAMP 10646 FAN

Carved wood, trimmed in gold & white, with a painted scene of a man & a woman near brick wall surrounded by pink & white flowers on blue & beige background. Decorated with sequins, metal hinge with white cord & tassel.



HAMP 10647 FAN

Carved white ivory with inlaid silver. Handpainted white organza & silver & white flowers. Decorated with lace & sequins. Metal hinge. White silk cord with tassel.



HAMP 10648 FAN

Trimmed with blue, gold, pink & purple paint, carved inlaid bone on handpainted blue cotton of purple & pink flowers with green leaves & brown vines. Decorated with sequins. Metal hinge. Blue cord with white tassel.



HAMP 10650 FAN

White Belgian lace and mother-of-pearl; mounted on board covered with blue velvet. Glued and stretched onto board. No Ridgely provenance.



HAMP 10659 DRESS

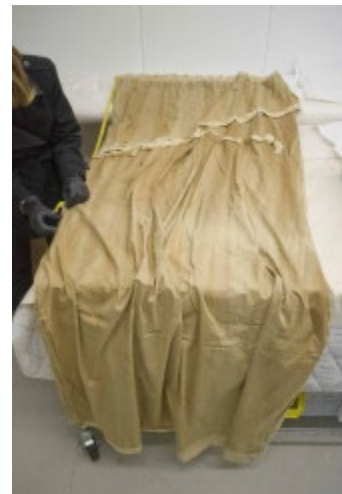
GAILLARD, ARNOUL

Purple & orchid 2-piece satin dress. a) blouse has square neckline with pale purple velvet insert decorated with 2 satin bows. Three-quarter length sleeves have ruffles at edges. b) skirt is mainly purple with insert in front. Bands & ruffles of orchid satin decorate the skirt front. Skirt back dips to a V, almost a train. Written on waistband: "ARNOUL GAILLARD/ 41, RUE PASQUIER 41." See sketch in catalog folder.



HAMP 10678 DRAPERY

Lot of 7 gold brocade; pinch pleated. Possibly from Music Room. Seven pieces of drapery in 3 boxes. Three pieces in each of 2 boxes. One piece in 3rd box.



HAMP 10681 DRAPERY

Lot of 4 gold damask; edged in wide gold braid, with 3 valances. Box reads, "Mrs. Arnot"; "GOLD DRAPERIES"; "ROSALIE OSTER"; "4815 Keswick Rd." Goes with HAMP 10682, 10605, 10606, 10607. Box 181: 2 items. Box 182: 2 items. Box 183: 3 items.



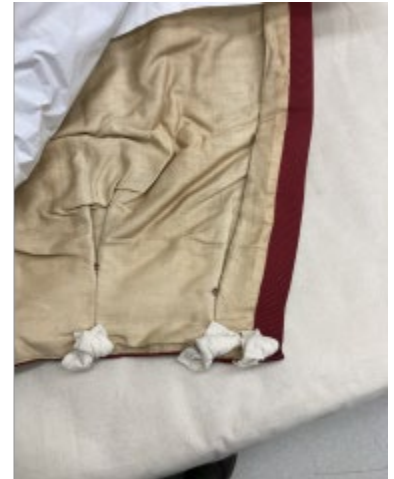
HAMP 10682 TIEBACK

Lot of 5. Elaborate tassels and ropes, gold. "Mrs. Arnot - Gold Draperies." Goes with HAMP 10681, 10605, 10606, 10607.



HAMP 10684 DRAPERY

Lot of 4. Red grosgrain (faille); pinch pleats. Lined in cotton. Acquired from Mrs. George Glascock 31 July 1974. Box 188: 2 items. Box 189: 2 items.



HAMP 10686 TIEBACK

Lot of 10. A: 2 single tassels with cord & pair tassels with long cord & toggle; cord originally green (appears blue) and white with gold and white 2-ply; green and white tassels have heading with vase-shaped top over netted cylinder with 2 velvet-like bands; twisted metal wire over silk bullion. B: large pink, yellow, & cream cotton & silk tassel; heading has V-shaped top with lattice work and braided border. C: silk & wool yellow with multicolor cord; possibly to accompany D & E. D: pink silk barrel toggle with yellow netting and V-shaped gothic border. E: yellow silk tassel heading with V-shaped border and petal-like base; matches D. Lot date range: 1900-1960. A matches 28016; SPMA # of B is 61-G-342, matches 6107 d & 10735; C matches 6107 e and 10736 c.



HAMP 10692 CURTAIN

Lot of 2 gold, striped silk, with five large gold tassels. Removed two modern metal curtain rods. Used in the North Portico.



HAMP 10733 TIEBACK

Lot of 3. Rose pink silk 2-play rope and 2 large tassels; heading has V-shaped top lattice work and braided forder; festoon-and-sway dropped border over plain bullion. Tassels are disassembled. [SPMA Register notes these are "silk doorway ropes with tassels," a function confirmed by photos.]



HAMP 10734 TIEBACK

Lot of 11. Per Gregory Weidman, 02/11/2002: A: 5 moss green and gold large silk tassels; heading has intertwined border over double oval bobbins; large gold over smaller green bullion; B: 3 slate blue with yellow and cream large cotton and silk tassels, one with cord; heading has V-shaped top with lattice work and braided border; D: 3 pieces of slate blue with yellow and cream multicolored two ply cord; en suite with B. Tassels are disassembled. [SMPA Register notes these are "silk doorway ropes with tassels," a function confirmed by photos; A: matches HAMP 6107 b; B: same design as HAMP 10735, but different color; C: matches HAMP 6107 c.]



HAMP 10735 TIEBACK

Lot of 40. Pair of tassels with cord plus numerous disassembled parts of large pink, yellow, and cream cotton and silk tassels; heading has V-shaped top with lattice work and braided border; matching smaller tassels; matching pieces of small tassel fringe. [SPMA Register notes these are "silk doorway ropes with tassels," a function confirmed by photos; matches HAMP 6107 d and HAMP 10686 b; design of tassel same as HAMP 10734 b, but different color.]



HAMP 10736 TRIM

Lot of 8. Per Gregory Weidman, 02/11/2002: A: single golden yellow small silk tassel, 1850-1880; B: 2 small bright yellow silk tassels, 1850-1880; C: length of gray & gold small tassel fringe, ovals in heading; D: 2 pieces of silk & wool yellow with multicolored cord; E: pieces of pink, yellow, & cream silk small tassel fringe, 1930- 1960. A: matches HAMP 6107 a; D: matches HAMP 6107 e and HAMP 10686 c; E: matches pieces in HAMP 10735.



HAMP 10737 FRAME, PICTURE

Beige cotton matting glued to cardboard with silk embroidery of bows, a garland & a basket, in shades of beige, green, pink & gold. Oval cutout for picture: L 5.38", W 3.5". Faded. See HAMP 10738 a, b for frame & glass.



HAMP 10738 FRAME, PICTURE

Brown stained with gilt trim, having glass insert & metal clips. a) frame, b) glass. See HAMP 10737 for matting.



HAMP 10739 CLOTHES, DOLL

Dress, having multi-colored ribbon-striped pattern of brown, green & rose on beige. Straight neckline with long sleeves. Gathered at waist, long skirt. Hook and eye closure. Hand sewn.



HAMP 10740 CLOTHES, DOLL

Blue and white hooded cape, pointed at front hemline of fleecy cotton, trimmed with blue silk binding. Three beige tassels on hood and two at neckline. Hook and eye closure. Hand sewn.



HAMP 10741 CLOTHES, DOLL

Brown silk skirt, with gathers at waist, finished with beige binding. Secured with hook and eye. Underskirt of stiff beige netting. Hand sewn.



HAMP 10743 CLOTHES, DOLL

Ecru cotton, 2-piece dress, having long, plain scooped neck, short sleeved top with tie closing at back neck, & many holes. Matching gathered skirt has waistband with button & buttonhole closing and sewn down ruffle. Hand sewn. a) top; b) skirt.



HAMP 10748 CLOTHES, DOLL

Tan straw wide brim hat, with beige ribbon, beige feathers, & black lace trim; beige ribbon down back, lined crown.



HAMP 10749 CLOTHES, DOLL

Cotton knit stockings. Ecru with red stripe near top. Foot small in proportion to calf. Small hole.



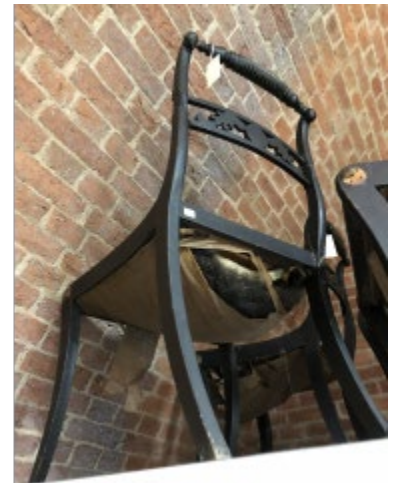
HAMP 11351 CHAIR

Having a rope & turned crest rail; reeded horizontal splats with a center gilt carved medallion & black leaves; scroll shaped stiles with a rope carving & medallion at splats, & a small raised medallion at crest rail. Sabre front legs headed by gilt rosettes; splayed rear legs. Painted black. Upholstered seat. Improperly upholstered. Paint cracked and chipped. Originally caned. Paint of a later date. One of a set of 5: see HAMP 11351-11355.

No Image Available

HAMP 11352 CHAIR

Having a rope & turned crest rail; reeded horizontal splats with a center gilt carved medallion & black leaves; scroll shaped stiles with a rope carving & medallion at splats, & a small raised medallion at crest rail. Sabre front legs headed by gilt rosettes; splayed rear legs. Painted black. Upholstered seat. Improperly upholstered. Paint cracked and chipped. Upholstery torn. Horizontal splat broken & poorly repaired at stile on 1 side. Originally caned. Paint of a later date. One of a set of 5: see HAMP 11351-11355.



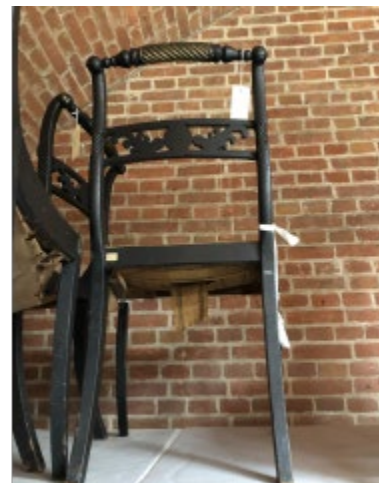
HAMP 11353 CHAIR

Having a rope & turned crest rail; reeded horizontal splats with a center gilt carved medallion & black leaves; scroll shaped stiles with a rope carving & medallion at splats, & a small raised medallion at crest rail. Sabre front legs headed by gilt rosettes; splayed rear legs. Painted black. Upholstered seat. Improperly upholstered. Paint cracked and chipped. Originally caned. Paint of a later date. One of a set of 5: see HAMP 11351-11355.



HAMP 11354 CHAIR

Having a rope & turned crest rail; reeded horizontal splats with a center gilt carved medallion & black leaves; scroll shaped stiles with a rope carving & medallion at splats, & a small raised medallion at crest rail. Sabre front legs headed by gilt rosettes; splayed rear legs. Painted black. Upholstered seat. Improperly upholstered. Paint cracked and chipped. Originally caned. Paint of a later date. One of a set of 5: see HAMP 11351-11355. b) broken, front sabre leg, detached. Improperly upholstered. Paint cracked & chipped. Originally caned. Paint of a later date. One of a set of 5: see HAMP 11351-11355.



HAMP 11355 CHAIR

Having a rope & turned crest rail; reeded horizontal splats with a center gilt carved medallion & black leaves; scroll shaped stiles with a rope carving & medallion at splats, & a small raised medallion at crest rail. Sabre front legs headed by gilt rosettes; splayed rear legs. Painted black. Upholstered seat. Improperly upholstered. Paint cracked and chipped. Originally caned. Paint of a later date. One of a set of 5: see HAMP 11351-11355.

No Image Available

HAMP 11453 DOLL

E.I.H. CO., INC.

Baby, having composition molded head, hair & eyes; open mouth & blue glass eyes. Cloth body with jointed composition arms & jointed composition & cloth legs. Evidence of voice box at the back. Marked at the back of head. Chipped and cracked.



HAMP 11461 LAMP, OIL PART

Receptacle, for an oil lamp. Glass lamp, having brass collar, removeable wick holder, tapered sides & a plug-shaped terminal. a) glass holder; b) wick holder.



HAMP 11502 CANDELABRUM

Clear molded glass; triple armed; having a flared urn-shaped nozzle above a fluted bobèche with a scalloped rim; supporting a descending set of 10 prisms: each consisting of an octagonal faceted prism above an elongated faceted prism. Also, having a faceted urn-shaped baluster set into a flared dish fitted with a rotating metal disk from which three scrolled faceted arms extend; each arm has an urn-shaped nozzle above a fluted bobèche with a scalloped rim supporting identical descending sets of 10 faceted prisms. All rest on a larger faceted urn-shaped baluster & an octagonal base. This candelabrum has one broken & incomplete arm & is missing three prisms. See HAMP 4225.



HAMP 11609 CHAIR

Black painted, having a rectangular crest rail with gilt decoration of a central wreath, scrolling acanthus leaves and flower heads flanking; all above horizontal splat with conforming decoration. Also, having vase and ring turned stiles and arm supports; scroll arms, a plank seat above turned and tapered front legs splayed rounded rear legs and flat and turned stretchers. Crest rail cracked with missing portion. One spindle broken. See HAMP 11610.



HAMP 11610 CHAIR

Black painted, having a rectangular crest rail with gilt decoration of a central wreath, scrolling acanthus leaves and flower heads flanking; all above horizontal splat with conforming decoration. Also, having vase and ring turned stiles and arm supports; scroll arms, a plank seat above turned and tapered front legs splayed rounded rear legs and flat and turned stretchers. See HAMP 11609.



HAMP 11612 VASE

Bronze covered footed bowl, having lid with small, stepped & beaded area surrounding a missing finial. Bowl has flared rim with 2 applied triangular handles with leaf attachments. All surmounting knopped stem with 4 decorative spires. Stem tapers to a round, stepped base with embossed water lily leaf border. a) bowl; b) lid.



HAMP 11617 WARDROBE

Having 3 parts. Center section having molded arched cornice with half circle finial at center and flanking quarter circles; body has 2 paneled hinged doors, above 3 beaded full length drawers with brass pulls and key holes. Two side sections having molded over hanging cornices above a full length paneled door. All resting on frame with 4 ball feet, front and back. Interior of side sections has 4 brass hooks and brass rod supports. Underside drawer Potthast Bros. label--cleaning; also Potthast Bros. labels on back panels. Interior of center section has 4 sliding trays. See HAMP 6034 for similar piece.
1810-1830 A) H 92 (75.66"), W 96.8 (77.5"), D 51 (20.5") CM; b) H 15.5 (6.13"), W 56.5 (22.25"), D 59 (23.25") cm; c) H 15 (6.13"), W 56.5 (22.25"), D 59 (23.25") cm



HAMP 11658 CLOCK, SHELF

Painted & gilt decorated clock having an acorn finial above a molded, knopped, inverted urn-shaped pediment. Clock case is oval shaped with open glassed sides, flared at base with scrolled, gilt legs & a rounded skirt. Glass door with molded gilt frame attaches to clock case with 3 small hooks & eyes. White enamel clock face has large black numbers with hours marked in Roman numerals, arabic minutes, & brass, pierced minute & hour hands. Hinged back door opens to access works. Shelf to clock has molded top upon which clock fits, above a molded knopped urn shaped body; acorn drop is missing. Overall painted design of flowers & leaves on a red background. a) cornice; b) clock case; c) pendulum, brass; d) shelf. See HAMP 11718 for a red tole pediment at one time considered to be part of this clock.



HAMP 11775 TRUNK

Has hinged slightly domed-shaped top, with metal reinforcements & leather handles on each side. Also, has hinged lock & two locking clasps. Trunk is lined with tattered geometric paper with interior tray missing. "PEORIA ILL & PROV RI" stenciled on each side under handles.



HAMP 11777 WASHSTAND

Splashboard, having shaped, three-sided gallery with brown stylized Greek key border; flat surface with oval cut-out for basin or sink; decorated with 6 nursery rhymes and animal figures. See Accessories; HAMP 10293-10296.



HAMP 11780 TABLE

Tilt-top table has circular top with carved rope edging mounted with repaired hinges & original lock; above ring and ball turned column; above four cabriole legs with ball and claw feet. In need of conservation to connect. NOTE: a) located on DR 21; b) located on SH 55.



HAMP 11811 SHOE

Lot of 3, shoe fragments; a) one men's work shoe, b) one ladies' shoe; and c) two are unidentifiable.



HAMP 11831 MIRROR, WALL

Gilt, rectangular, has stepped frame with carved & applied floral decoration & rosette decoration at the upper corners. 1870-1890 H 87.5 (34 1/2"), W 62.3 (24 1/2"), D 6.5 (2 9/16") CM



HAMP 11839 FIREBOARD MCSHANE, E.

Rectangular, painted green with painted geometric border in shades of green & cream. Oval reserve in center has the same painted border & consists of a painting of the front & west facades of Hampton Mansion. Previous location: HS 1, RM 41, SOUTH WALL.



HAMP 11882 CARPET

Machine made Persian of Bahktiara pattern; all-over birds, trees and flowers in beige and blue; darker framed conforming border.



HAMP 11884 CARPET

Aubusson; having three large floral medallions surrounded by various borders, wide and narrow, with or without floral designs; creamy, white field with shades of red, rust, tan, brown, gold and green. Many holes and repairs, both professional and amateur. See HAMP 11872 for another Aubusson.



HAMP 11887 CARPET

Sarouk; having faded red or rose with two large medallions centering a smaller one, minor ones at each end; border with two wide bands of geometric and floral designs within smaller borders; both bands and medallions on black field; other colors of reds, greens, blues, aqua. Small patched repair, not professionally done; fringe excellent; sides and ends in very good condition.



HAMP 12343 MIRROR, WALL

Rectangular, has stepped cornice above rectangular wooden panel (may have been an eglomise panel at one time); rectangular mirror plate flanked by fluted columns all above plinth base. 1870-1890
H 70.5 (27 3/4"), W 44 (17 5/16"), D 7 (2 3/4") CM



HAMP 12728 BOWL, FRUIT

Circular, Imari, footed bowl. White porcelain decoration in shades of blue, orange, green & gray. Interior having cross-hatched border at the rim, geometric & floral motifs at the sides, & a floral & leaf decoration in the center reserve. Exterior is also decorated with cross-hatching at the rim & widely spaced circle & leaf designs. Cracked & repaired.



HAMP 17753 LAMP, OIL FLAGG & HOMAN

Pewter chamberstick burning lard (or whale) oil; upright cylindrical tin (or copper) wick tube containing cotton wick, dished top with gadrooned rim, flaring out to high-waisted baluster body, with knop, stepped & double domed hollow base. "1570" handwritten in black on inside of base, "6.21.B" in red. See similar chamberstick, HAMP 17754.



HAMP 17754 LAMP, OIL FLAGG & HOMAN

Pewter chamberstick burning lard (or whale) oil; upright cylindrical tin (or copper) wick tube containing cotton wick, dished top with gadrooned rim, flaring out to high-waisted baluster body, with knop, stepped & double-domed hollow base. "1570" handwritten in black on inside of base, "6.21-A" in red. See similar chamberstick, HAMP 17753.



HAMP 17761 PARASOL

Long wood parasol skeleton having black metal ribs with brass tips, encased in fragments of pale pink silk; brass cylindrical ring controlling ribs stamped "HARTMANN/ 21/ BD DES CAPUCINES"; metal mechanism in pole. Brass tip on end; elaborate brass handle end with amethyst (possibly violet quartz?) set in end, within reeded ring; green enamel band with applied brass garland swags, 1 3/4" tapered cylindrical having wavy pattern with scattered dots; band of tiny pearls set between bands of leaves. Gift of Mrs. J. W. Brown, Jr., and Mrs. J. W. Green, 15 Jan 1967, as part of the estate of Mrs. Laura Kerfoot.



HAMP 17944

PRINT --BOX --PILLOW, THROW PRANG, L. & CO.

Set of 5 components: two part white cardboard box (d & e), containing (a) color print of mother and child among trees with meadow, lake and mountains beyond and captioned "Copyright 1884 by L. Prang & Co. Boston", mounted on padded white tafetta pillow gray silk ribbon and pink cord edging above and "WITH ESTEEM" written in gilt litter on pillow, which is surrounded by matching fringe and mounted on faded pink textured cardboard with serrated edges and decorated with gilt glitter; cardboard bending stand or leg attached on reverse. Also found in box, (b & c) two identical printed cards each having pale green background, with silver cross lying diagonally across, with white flowers and greenery piled on cross; (b) has pencil scribble on back, "[?]32." Box (d & e) has "Miss Ida Klein" written on bottom; sides are broken



HAMP 20020 BOOK, MUSIC

1. Anthology
2. Contains songs for voice and piano; piano music; 420 pp.
3. Works by Clark, Lover, Ordway, Stayman and others.
4. Cover: Red half leathers. Brown cloth on boards. Spine has six pairs of double gold horizontal bands (at stitching bands). In between the second and third set, stamped in gold "Music." In between other sets, a gold quatrefoil has been stamped. Endpapers: paste-down present in front and back.
5. Inside back cover: typed label which reads "Music Book/ 69-g-434/ Mr. Frank Wiedefeld." The number is indicated in ink inside front cover as well.
6. Bound anthology of music. Mostly American editions of the Civil War era.



HAMP 22445 TABLE

Rectangular table having pieced top with canted corners above a plain skirt with blocked and tapered legs. Two small drawers open on the long side of table, each with keyhole and simple brass handles.



HAMP 22596 POKER

Wrought iron, having three curved tines, a long handle with twist decoration, and a tulip shaped handle.



HAMP 22597 TONGS, FIREPLACE

Having brass ball over wrought iron ring above double-armed poker ending in pad grippers. For other parts of set see, HAMP 22598-22600.



HAMP 22598 STAND, FIRESET

Having brass ball over wrought iron pedestal extending to three hooked arms above tapered stand ending in three curved legs with pad feet. For other parts of set see, HAMP 22597, 22599, 22600.



HAMP 22599 POKER

Having brass ball over wrought iron arm ending with crescent hook. For other parts of set see, HAMP 22597, 22598, 22600.



HAMP 22600 SHOVEL, FIREPLACE

Having brass ball over wrought iron handle ending in flared spade above flared trapazoidal shaped scoop. For other parts of set see, HAMP 22597-22599.



HAMP 22601 SCREEN, FIRE

Three sided, rectangular, having brass rim above wire screen with wire scroll decoration. Wire is enameled black. Many wires missing and bent.

In same photo are andirons, see HAMP 1204-1205.



HAMP 28015 TIEBACK

Lot of 12: 6 cords and tassels--108" each with tassel at each end; 6 tassels only--8" each. Cord originally green (appears blue) and white with gold and white 2-ply; green and white tassels have heading vase-shaped top over netted cylinder with 2 velvet-like bands; twisted metal wire over silk bullion. See HAMP 10686 a.



HAMP 28016 TIEBACK

Lot of 3. Green and metallic gold tassels (112", 124", 136") with cord. Two are green, tan, and metallic gold cord with 2 circles of green velvet on tassel (112" & 136" L). Ends without tassel are frayed. One is same as above with additional fancy trim hanging within the tassel (124" L). End without tassel is frayed. Per Gregory Weidman, 02/11/2002: Cord originally green (appears blue) and white with gold and white 2-ply; green and white tassels have heading vase-shaped top over netted cylinder with 2 velvet-like bands; twisted metal wire over silk bullion. See HAMP 10686 a.

