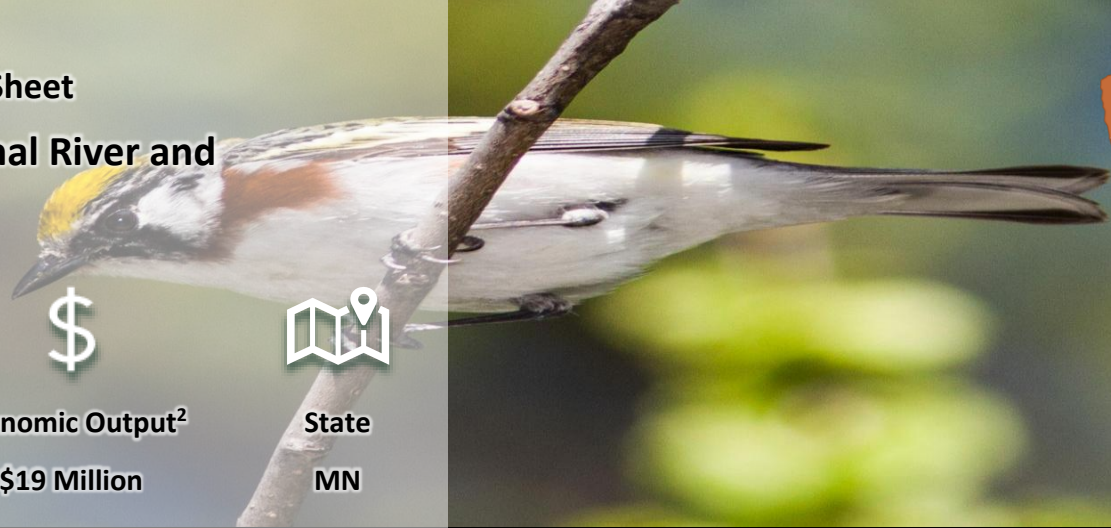


# Infrastructure Fact Sheet

## Mississippi National River and Recreation Areas



**Annual Visitors<sup>1</sup>**  
225 Thousand



**Economic Output<sup>2</sup>**  
\$19 Million



**State**  
MN

### Infrastructure Inventory<sup>3</sup>

The figures below show the park's real property inventory by asset category as of the end of Fiscal Year (FY) 2025.



**1 Building**



**1 Mile of Trails**



**1 Mile of Unpaved Roads<sup>4</sup>**



**0 Water Systems**



**0 Campgrounds**



**0 Housing Units<sup>5</sup>**



**0 Waste Water Systems**



**0 Miles of Paved Roads<sup>6</sup>**



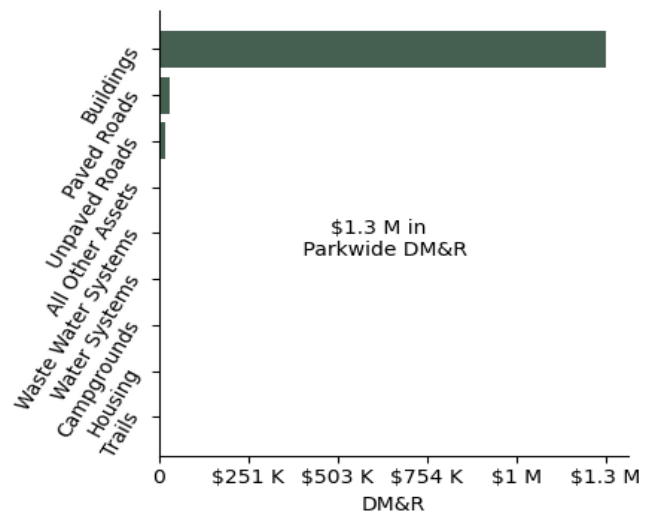
#### Other Asset Types

The park also has **1** other asset. This includes Electrical System, Communication Systems, Maintained Landscapes, Trail Bridge (Substantial), Amphitheaters, Marina/Waterfront System, Fuel System, Dam/Levee

### Infrastructure Investment Needs

There is an estimated **\$1.3 M** in Deferred Maintenance and Repairs (DM&R)<sup>7</sup> associated with the inventory above. The park has an estimated **\$32 K** in Annual Routine Maintenance<sup>8</sup> requirements. This figure represents the minimum annual investment needed to sustain current asset conditions and meet ongoing maintenance and recapitalization needs. Without this investment, asset conditions will continue to deteriorate, compounding long-term costs and increasing the deferred maintenance backlog.

### Park Infrastructure Condition



Mississippi National River and Recreation Areas has a total portfolio DM&R of \$1.3 M. The Buildings asset category currently accounts for the largest portion of DM&R at \$1.3 M. The Paved Roads asset category has \$33 K in DM&R. Unpaved Roads has \$17 K. The Trails, Housing, Campgrounds, Water Systems, Waste Water Systems, and All Other Assets asset categories have \$0 in current deferred maintenance and repair needs.

## Notes

<sup>1</sup> National Park Service Visitor Statistics, Annual Visitation by Park - 2025 - <https://irma.nps.gov/STATS/Reports/National/>.

<sup>2</sup> Economic Contributions of National Park Visitor Spending - 2024 - <https://www.nps.gov/subjects/socialscience/vse.htm>.

<sup>3</sup> The inventory matches the Federal Real Property Profile (FRPP) reporting parameters. The Park may manage assets that are owned by other agencies or local partners which are not reported in the NPS FRPP totals. Additionally, any commercial leases are included in the inventory but do not contribute to Deferred Maintenance and Repairs (DM&R).

<sup>5</sup> Housing includes residential units and trailer pads that are associated with the NPS Employee Housing Program whereby rent is collected. The data is from the Internet Quarters Management Information System (iQMIS) as of September 30, 2025.

<sup>4</sup> Unpaved Roads includes the total length of unpaved roadways.

<sup>6</sup> Paved Roads includes the total length of bridges, tunnels, and paved roadways.

<sup>7</sup> DM&R includes only correction of existing deficiencies. It does not include, for example, alterations for improved accessibility, upgrades to meet current building codes, installation of new fire suppression systems, expansion of capacity, or annual recurring maintenance needs. The data is from FRPP FY 2025.

<sup>8</sup> Annual Routine Maintenance represents modeled costs for preventative and recurring maintenance activities. It does not account for annual operating requirements, modernization and renewal costs to address safety, code compliance, and visitor capacity needs, or other park-specific needs and priorities.