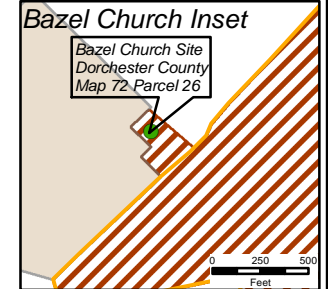
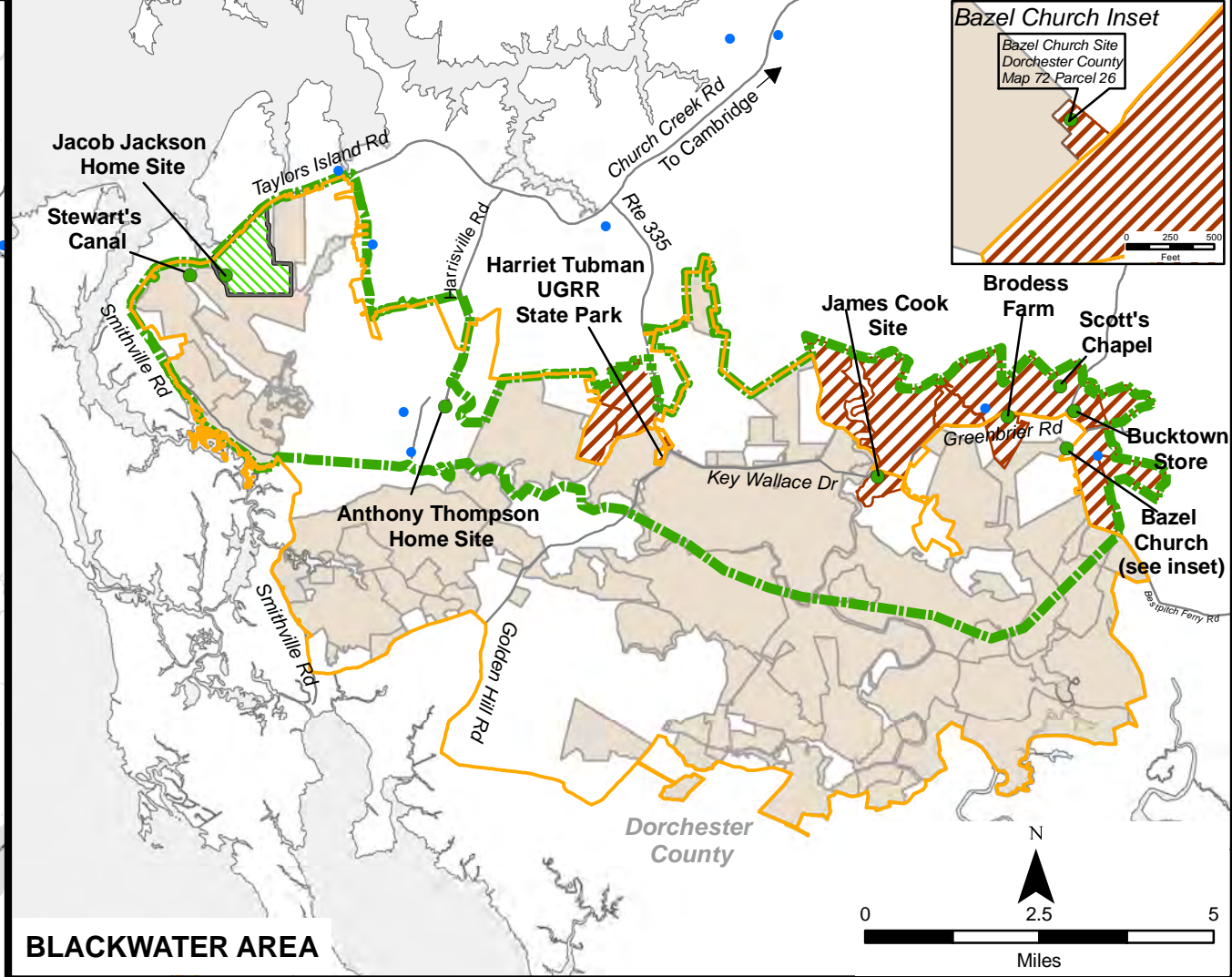
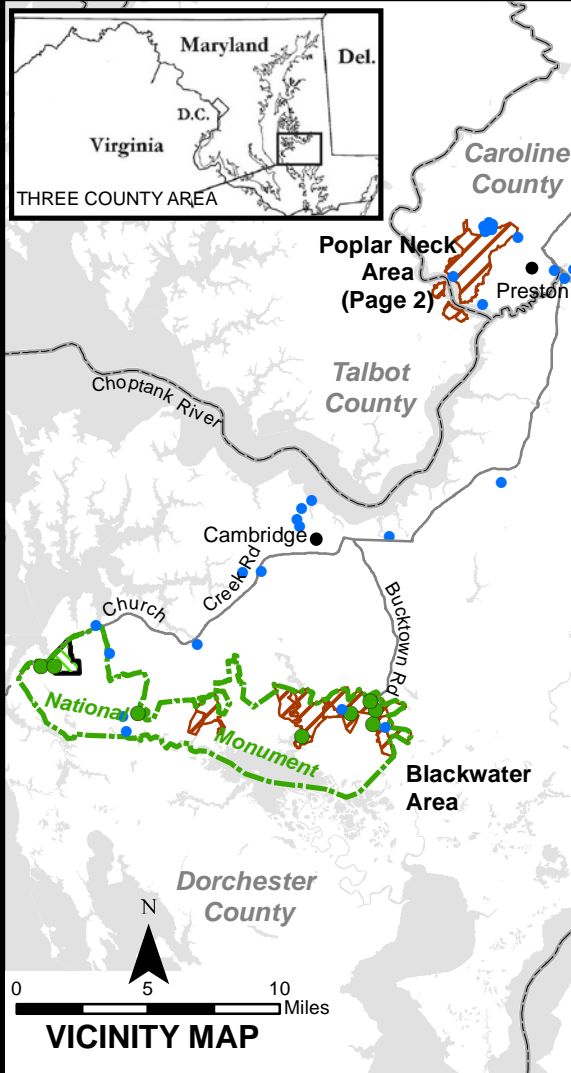


# Harriet Tubman Underground Railroad National Historical Park

## Proposed Boundary and Authorized Acquisition Areas

Including Acreage Map Calculations for NPS Areas - Blackwater Only  
Dorchester County, Maryland

National Park Service  
U.S. Department of the Interior



- Key Tubman Historic Sites ● Other Underground Railroad Sites
- ▨ Authorized Acquisition Areas for the National Historical Park (4207.54 acres±)
- ▨ Harriet Tubman - Underground Railroad National Monument Boundary
- ▨ Harriet Tubman Underground Railroad National Historical Park Boundary (480 acres±)
- ▨ Blackwater National Wildlife Refuge (USFWS Owned)
- ▨ Blackwater National Wildlife Refuge Boundary

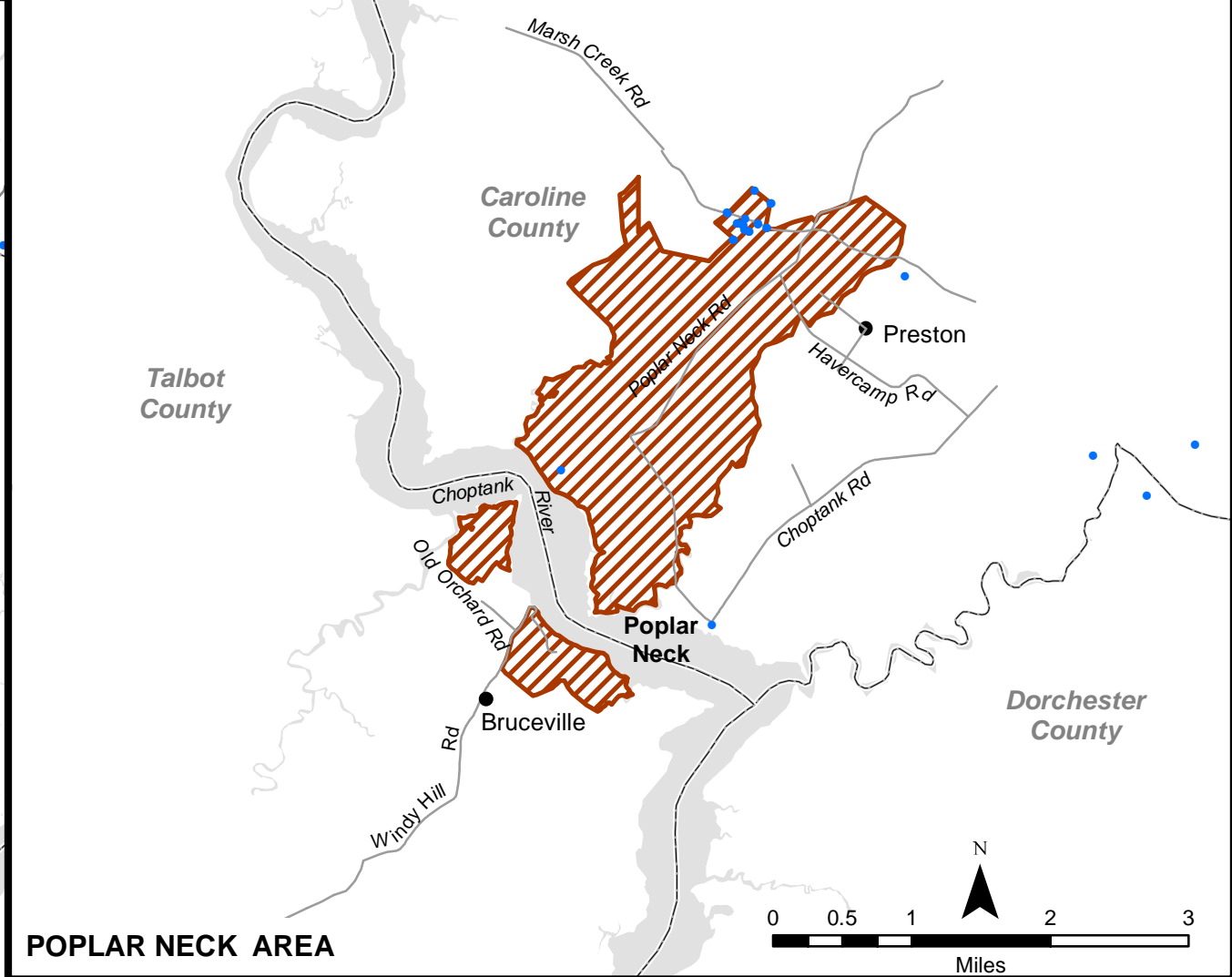
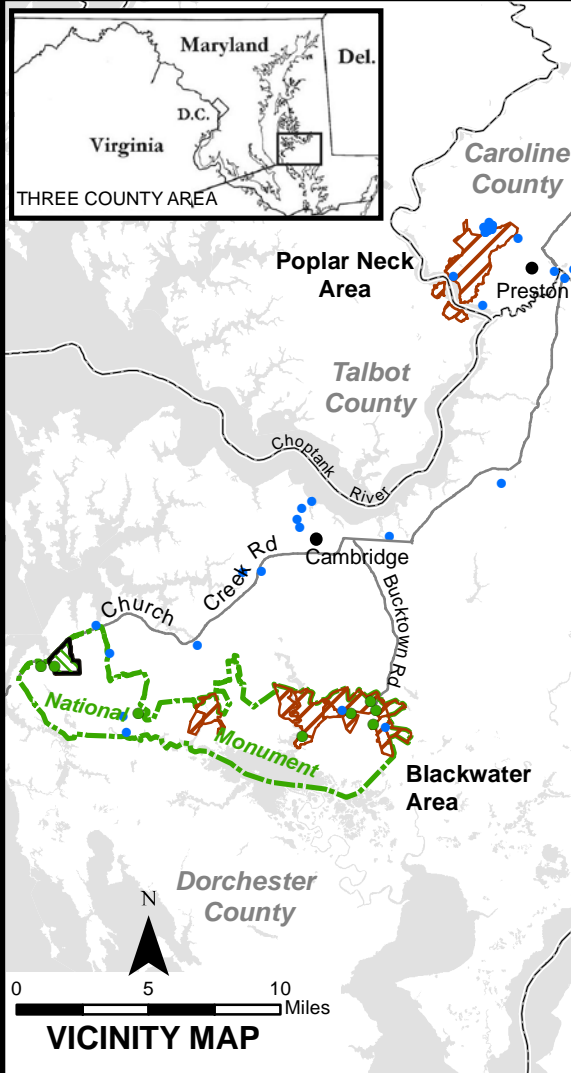
Park: HATU  
Map Number: T20/80,001A - Page 1 of 2

OFFICE: Land Resources Program Center  
REGION: Northeast Region  
DATE: March 2014

# Harriet Tubman Underground Railroad National Historical Park Proposed Boundary and Authorized Acquisition Areas

Including Acreage Map Calculations for NPS Areas - Poplar Neck Only  
Caroline County and Talbot County, Maryland

National Park Service  
U.S. Department of the Interior



- Key Tubman Historic Sites
- Other Underground Railroad Sites
- Authorized Acquisition Areas for the National Historical Park (2719 Acres±)
- Harriet Tubman - Underground Railroad National Monument Boundary
- Harriet Tubman Underground Railroad National Historical Park Boundary
- County Boundary Line

Park: HATU  
Map Number: T20/80,001A - Page 2 of 2

OFFICE: Land Resources Program Center  
REGION: Northeast Region  
DATE: March 2014