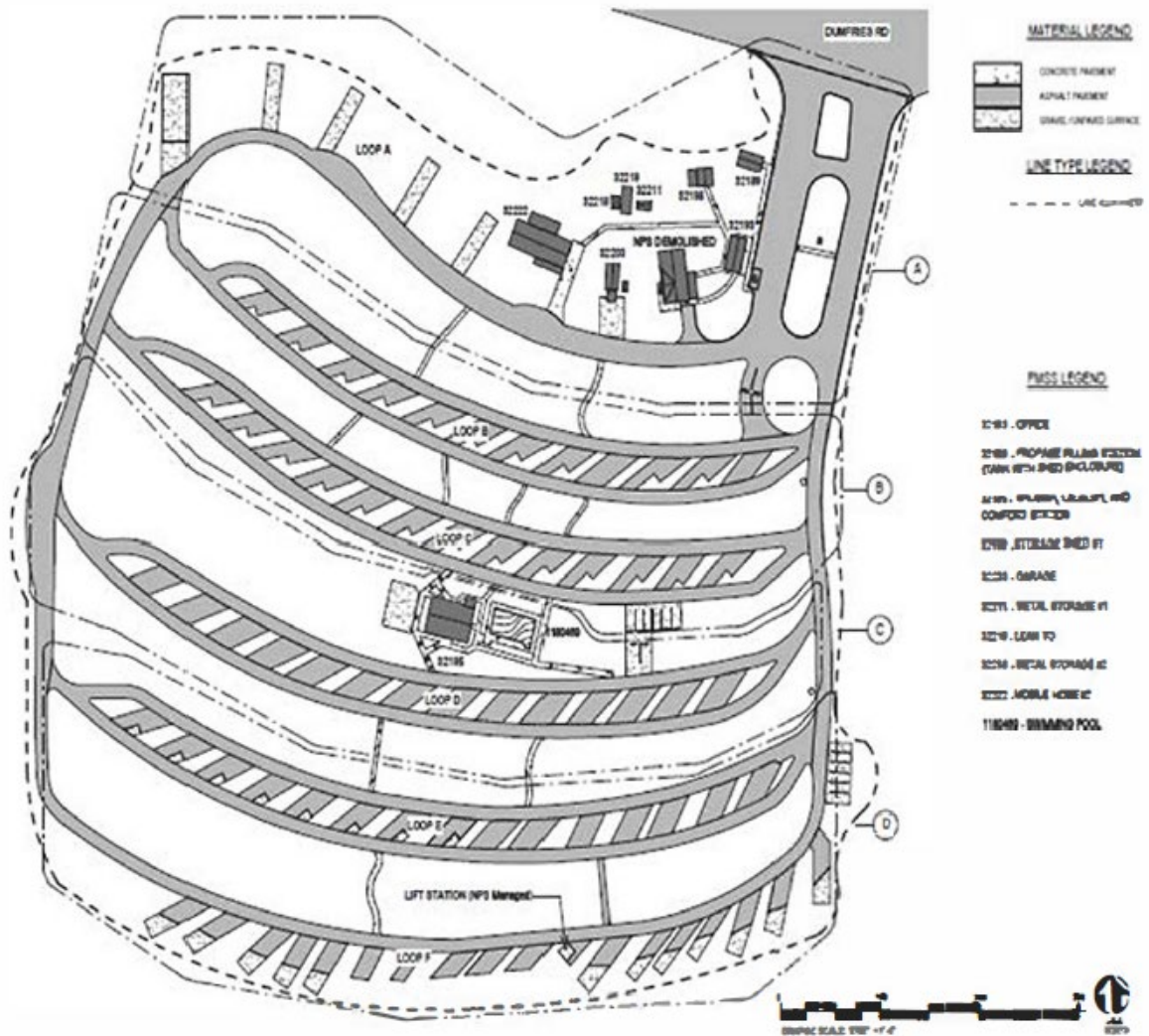
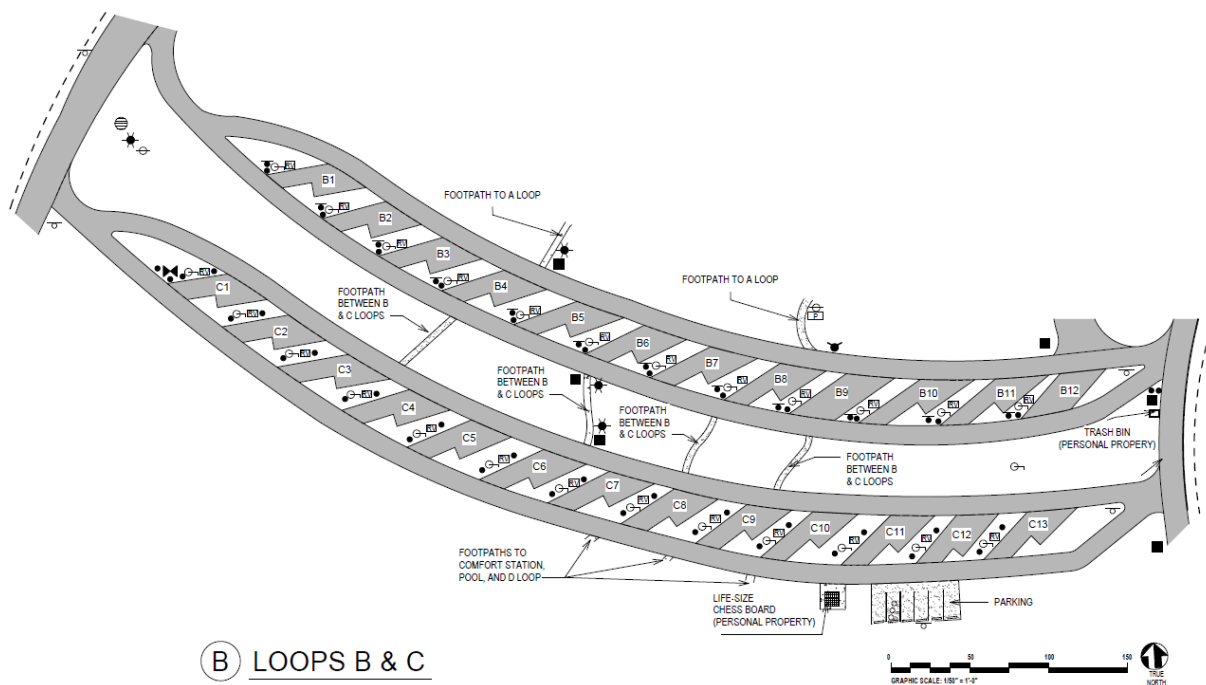
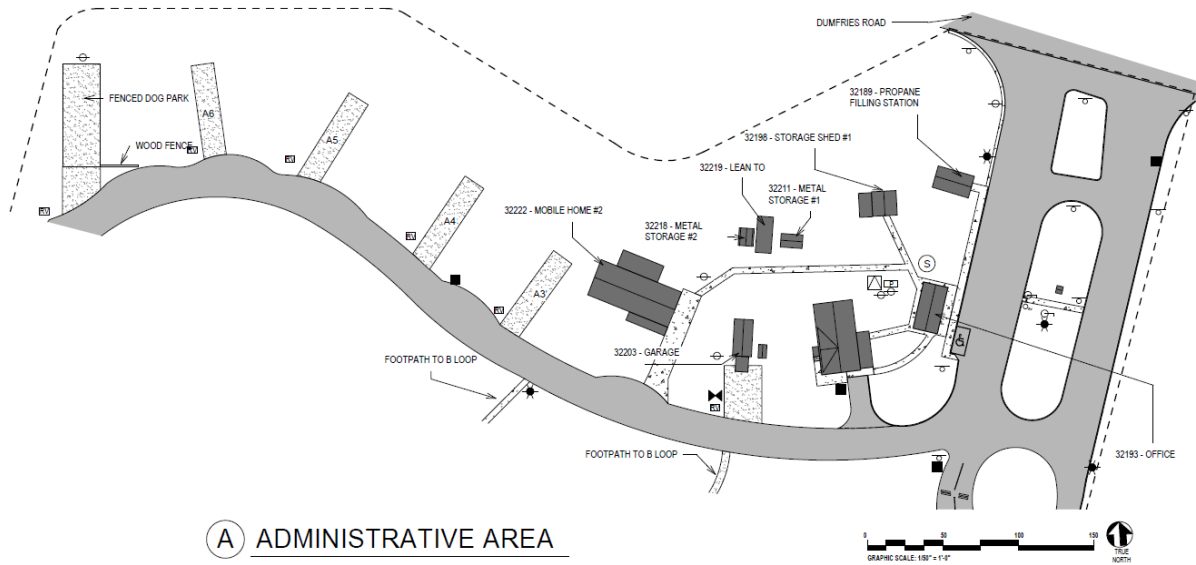
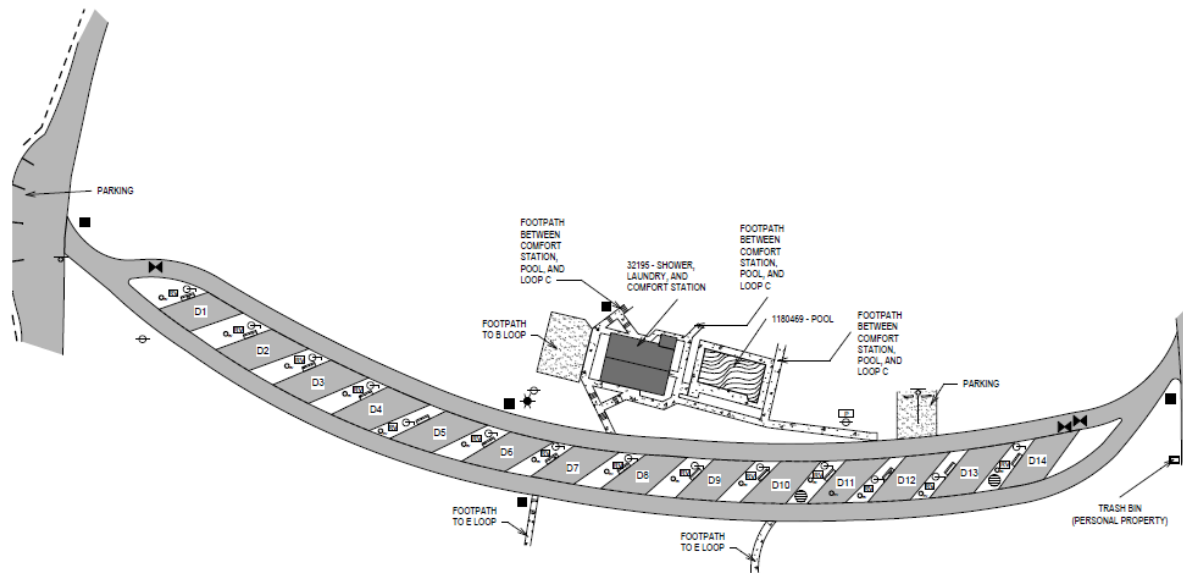


EXHIBIT D**ASSIGNED LAND AND REAL PROPERTY IMPROVEMENTS
(CONCESSION FACILITIES)****Land Assigned**

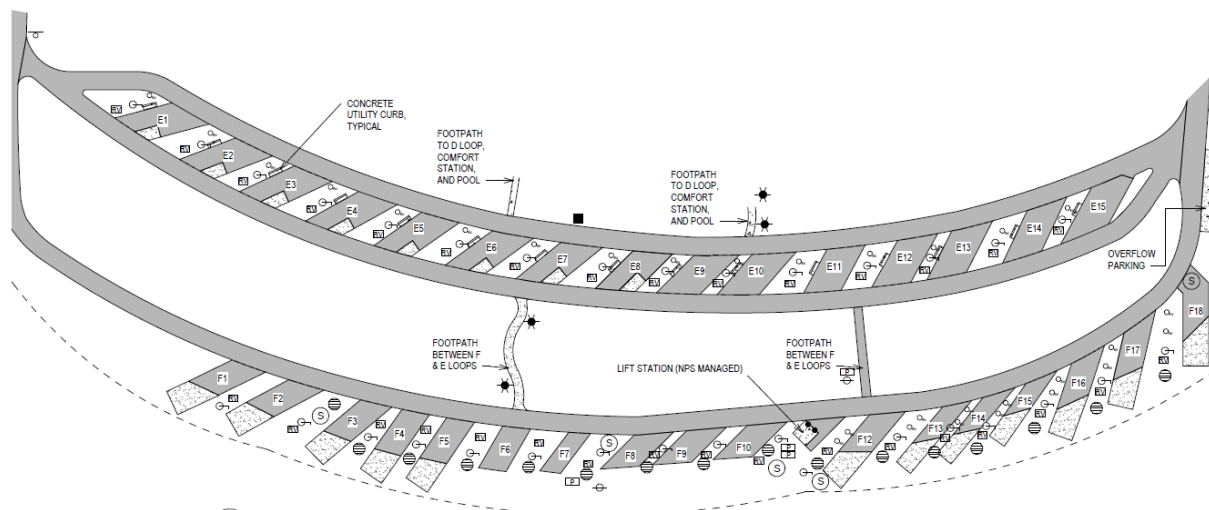
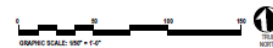
Land is assigned in accordance with the boundaries shown on the following maps:



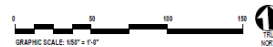




C COMFORT STATION & LOOP D



D LOOPS E & F



Real Property Improvements Assigned

The following real property improvements are assigned to the Concessioner for use in conducting its operations under this Contract:

Asset Number	Asset Description	Quantity	UOM	Insurance Replacement Value
15910	Asphalt-Paved Campsites	1	N/A	\$896,583
32193	Office	414	ft ²	\$40,327
32195	Shower/Laundry/Comfort Station	1,281	ft ²	\$212,814
32198	Storage Shed #1	427	ft ²	\$12,296
1180469	Swimming Pool (33,000 gallons)	1,966	ft ²	N/A*
32203	Garage	372	ft ²	\$12,561
32218	Metal Storage #2	108	ft ²	\$3,857
32219	Lean To	234	ft ²	\$1,976
32211	Metal Storage #1	112	ft ²	\$3,957
32222	Mobile Home #2	1,859	ft ²	\$203,742
32189	Propane Filling Station	240	ft ²	\$6,682

**Please note: The lack of value for an asset in the column for Insurance Replacement Value does not relieve the Concessioner of its obligation to insure the asset according to the terms of this Contract.*

Approved, effective _____, 20__

By: _____

Regional Director
Interior Region 1 – National Capital Area
National Park Service