

EXHIBIT C

**ASSIGNED LAND AND REAL PROPERTY IMPROVEMENTS
(CONCESSION FACILITIES)**

Land Assigned

Land is assigned in accordance with the boundaries shown on the following map[s]:

Real Property Improvements Assigned

The following real property improvements are assigned to the Concessioner for use in conducting its operations under this Contract:

Asset Code	Asset Description	Asset Type	Unit of Measure	Quantity	Date Built or Installed	Historic (Y or N)	Minimum Insurance Replacement Value* (IRV)
110722	Akers Visitor Contact Station Bldg. 277	4100	Sq ft	400	2007	N	\$232,115

** The aggregate total of the Minimum Insurance Replacement Values for the individual assets listed in the tables above indicates only the minimum real property insurance coverage that the Concessioner must procure and maintain in effect during the term of the Contract. Notwithstanding the inclusion of Minimum Insurance Replacement Values for the individual assets listed in the tables above, the Concessioner has an obligation, under Section 11(d)(1) of the Contract, to repair or replace damaged or destroyed Concession Facilities and personal property utilized by the Concessioner in the performance of its obligations under the Contract, regardless of cost. The Concessioner therefore should evaluate the various risks of loss to the Concession Facilities assigned to it under the Contract, including the risk of catastrophic loss, and procure real and personal property insurance it deems sufficient to cover those risks. The Concessioner will not be relieved of its obligations under Section 11(d)(1) of the Contract because its insurance proceeds are not sufficient to repair or replace damaged or destroyed property.*

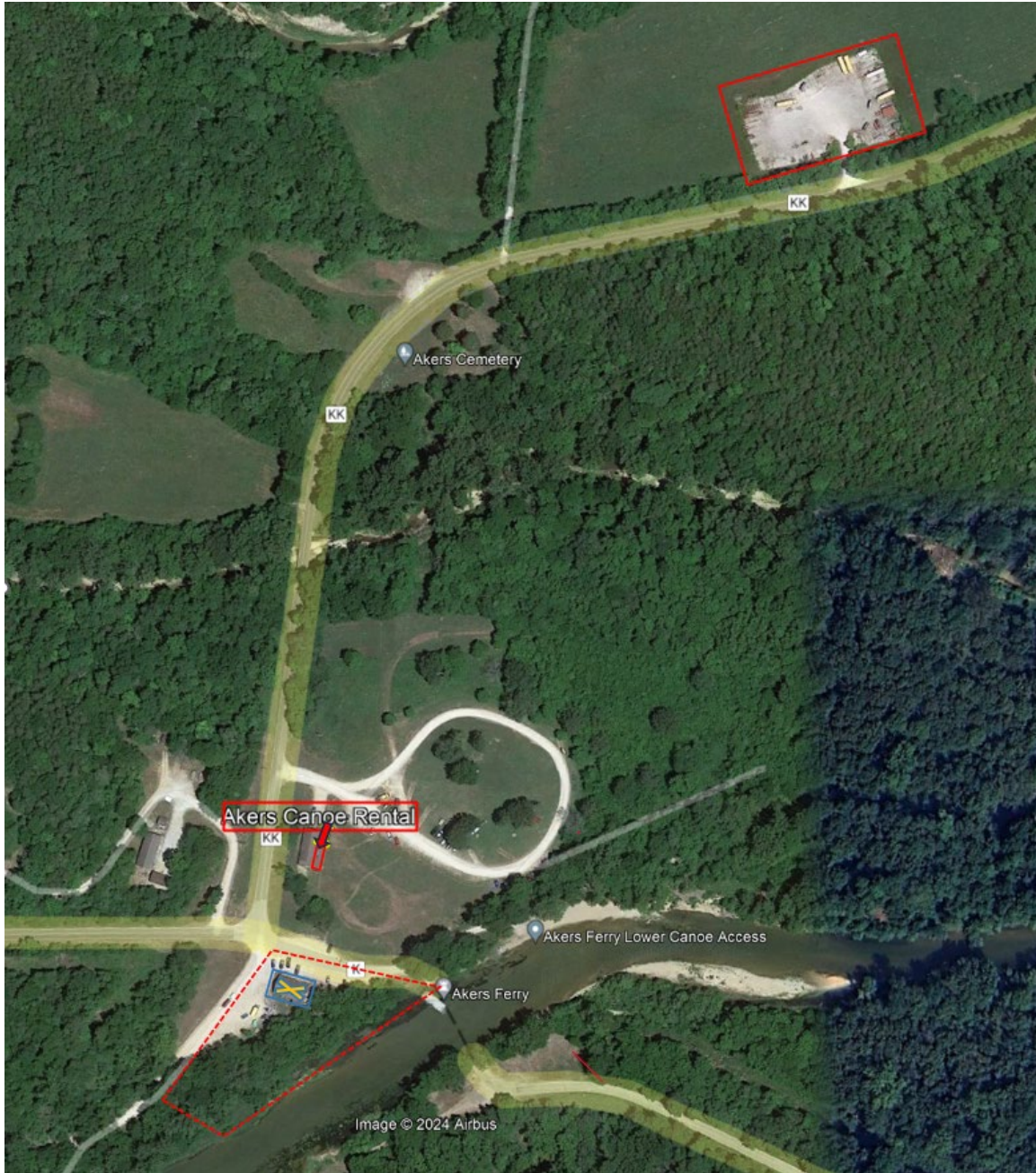
*** Please note: The lack of value for an asset in the column for Insurance Replacement Value does not relieve the Concessioner of its obligation to insure the asset according to the terms of this Contract.*

Approved, effective _____, 20____




By: _____
[Name]

National Park Service Regional Director, Interior Regions 3, 4 and 5

OZAR012-27 ASSIGNED LAND / REAL PROPERTY IMPROVEMENTS



OZAR012-27 (Akers Ferry) Concession Land Assignment

-  Perimeter of concession land assignment for the long-term equipment storage and relocation of Akers Canoe Rental and camp store.
-  Perimeter, of 'buffer zone' located within original land assignment. This area is visible to the public and shall remain free of operations equipment, except for use as an intermittent client loading and unloading zone, as specified in the contract. Parking area surrounding the original concession land assignment shall continue to be utilized as employee and visitor parking.
-  The prior concession facility is excluded from this revised land assignment. Concessioners shall not utilize this facility and will not be responsible for facility maintenance.