

# Part I

## BUSINESS OPPORTUNITY

Guided Interpretive Whitewater River Trips

within

Dinosaur National Monument

National Park Service

Department of the Interior

Concession Contract No. CC-DINOXXX-26

Covering Concession Contracts:

CC-DINO001-26	CC-DINO002-26	CC-DINO003-26	CC-DINO005-26
CC-DINO006-26	CC-DINO008-26	CC-DINO009-26	CC-DINO011-26
CC-DINO012-26	CC-DINO014-16	CC-DINO016-26	



## TABLE OF CONTENTS

<b>INTRODUCTION.....</b>	<b>1</b>
THE NATIONAL PARK SERVICE AND ITS MISSION .....	1
<b>MARKET AREA OVERVIEW.....</b>	<b>3</b>
WEATHER .....	4
DINOSAUR NATIONAL MONUMENT VISITATION TRENDS.....	5
<b>KEY ELEMENTS OF THE BUSINESS OPPORTUNITY .....</b>	<b>6</b>
OVERVIEW OF THE BUSINESS OPPORTUNITY .....	6
TERM AND EFFECTIVE DATE OF DRAFT CONCESSION CONTRACT(S) .....	7
PREFERRED OFFEROR DETERMINATION .....	7
REQUIRED SERVICES AND AUTHORIZED SERVICES .....	8
CHARACTERISTICS OF THE REQUIRED AND AUTHORIZED SERVICES.....	8
LAUNCH ALLOCATIONS BY CONTRACT .....	9
MINIMUM USE .....	9
COMMERCIAL RIVER TRIP PERMITS .....	9
<b>INVESTMENT ANALYSIS.....</b>	<b>10</b>
LEASEHOLD SURRENDER INTEREST.....	10
ESTIMATED INITIAL INVESTMENT.....	10
PERSONAL PROPERTY.....	10
ESTIMATED REVENUE AND EXPENSE PROJECTIONS .....	10
<b>HISTORICAL CONCESSION OPERATION .....</b>	<b>12</b>
EXISTING CONCESSIONS OPERATION .....	12
HISTORIC RATES .....	12
HISTORICAL FINANCIAL AND USE DATA .....	12
<b>SITE VISIT.....</b>	<b>14</b>
<b>QUESTIONS .....</b>	<b>14</b>
<b>NOTIFICATION OF INTENT TO PROPOSE .....</b>	<b>14</b>



---

## INTRODUCTION

---

The National Park Service (Service) has determined that certain visitor services are necessary and appropriate to enhance the visitors' comfort and enjoyment of the Park Unit while ensuring that the resources are protected.

The National Park Service (Service) intends to award up to eleven concession contracts to operate guided interpretive whitewater river trips in Dinosaur National Monument (Park). This Prospectus describes in general terms the existing business and the future business opportunities for the facilities and services required by the Service. Offerors are responsible for reviewing all sections of this Prospectus and, specifically, the terms and conditions of the Draft Concession Contract CC-DINOXXX-26 (Draft Contract(s)), including its exhibits, to determine the full scope of a future Concessioner's responsibilities under the Draft Contract(s).

The Service is conducting this solicitation in accordance with the National Park Service Concessions Management Improvement Act of 1998 (Public Law 105-391) as implemented by the Service in 36 C.F.R. Part 51. The term "Concessioner" as used in this Prospectus refers to the entity that will be the Concessioner under the Draft Contract(s). The term "Existing Concessioner(s)" refers to the entities that currently provide services under the Existing Concession Contracts (Existing Contracts). The Existing Contracts are available upon request. See the Appendix Table of Contents (Part V of this Prospectus) for how to request a copy.

In the event of any inconsistency between the terms of this Prospectus and 36 C.F.R. Part 51, 36 C.F.R. Part 51 will prevail. In the event of any inconsistency between the description of the terms contained in this Prospectus and the Draft Contract(s), the Draft Contract(s) will prevail.

### THE NATIONAL PARK SERVICE AND ITS MISSION

America's National Park Service was created by Congress to:

*...conserve the scenery and the natural and historic objects and the wildlife therein and to provide for the enjoyment of the same in such a manner and by such means as will leave them unimpaired for the enjoyment of future generations. (16 U.S.C. § 1)*

Additionally, Congress declared that the National Park System should be:

*...preserved and managed for the benefit and inspiration of all the people of the United States... (16 U.S.C. §1a-1)*

The National Park Service preserves unimpaired the natural and cultural resources and values of the National Park System for the enjoyment, education, and inspiration of this and future generations. The Service cooperates with partners to extend the benefits of natural and cultural resource conservation and outdoor recreation throughout this country and the world. Visit the National Park Service website ([www.nps.gov](http://www.nps.gov)) to learn more about the National Park Service, including its mission, policies, and individual park units.



## DINOSAUR NATIONAL MONUMENT AND ITS MISSION

In 1915, Woodrow Wilson signed a Presidential Proclamation that set aside an area with, “an extraordinary deposit of Dinosaurian and other gigantic reptilian remains of...great scientific interest and value, and...the public interest would be promoted by reserving these deposits as a National Monument.” President Franklin Roosevelt expanded the protected area in 1938 to include portions of the Green and Yampa Rivers. Today, Dinosaur National Monument encompasses approximately 210,844 acres and preserves a wide variety of past and present ecosystems.

The Area is in the remote, arid plateau region of northwest Colorado and northeast Utah. Elevations range from under 4,750 feet (1,448 meters) near Carnegie Quarry to over 9,000 feet (2,743 meters) at Zenobia Peak. Deep river canyons divide the Area into three highland plateaus and sheer cliffs and rugged terrain allow access to the rivers below at only a few places. The remoteness; varied rock formations; oases of plant and animal communities; remnants of early civilizations and explorations; and an assortment of rapids, riffles, eddies, pools and meanders create a unique and tremendously popular recreation opportunity. Hiking and river rafting are two of the most popular activities in Dinosaur National Monument, but bicycling, fishing, camping, horseback riding, and taking scenic drives are also available.

According to the Park’s Foundations for Planning Document (2015), “Dinosaur National Monument protects, studies, and provides access to extraordinary fossil deposits of dinosaurs and other life, a record of thousands of years of human occupation and use, and the wild and ecologically diverse landscape shaped by the Green and Yampa Rivers.”

Additional information on Dinosaur National Monument can be found at [www.nps.gov/dino](http://www.nps.gov/dino).



## MARKET AREA OVERVIEW

Located on the Colorado and Utah border, Dinosaur National Monument is within a one-day drive of several major cities and other national park areas. (See Exhibit 1.) The east side of the Area, located in Colorado, provides access to deep canyons along the Green and Yampa rivers. The west side of the Area, located in Utah, features the world-famous Carnegie Quarry where visitors can see over 1,500 fossils still embedded in the cliff face.

The Area, including the Dinosaur Quarry Exhibit Hall and Quarry Visitor Center, are open all year. Certain roads and facilities close during the winter months. The Canyon Visitor Center is open from late spring through early fall and is two miles east of Dinosaur, Colorado. There are six developed campgrounds containing about 120 sites located around the Area.

Both states are world renowned for their scenic destinations and range of outdoor activities. According to National Park Service visitor statistics, in 2023, Colorado had 7,280,581 recreational visitors to the eleven NPS sites in the state. This was a 2.07% decrease from the previous year. Meanwhile, Utah had 15,678,158 recreational visitors to the thirteen NPS sites in the state. This was a 15.67% increase over the previous year. Overall, the National Park Service Social Science Program reported 325.5 million recreation visits in calendar year 2023, an increase of 13 million visits, or 4%, from 2022. Visitation patterns are becoming similar from year-to-year and are exhibiting more routine variability, much as they did in the decades leading up to the NPS Centennial in 2016, although overall systemwide visitation is now significantly higher.

Exhibit 1 – Geographic Area



Source: National Park Service



## WEATHER

Dinosaur's climate is semiarid with temperatures averaging between 0°F to 30°F in January and 50°F to 100°F in July. Elevations within the Area vary between 4,700 and 9,000 feet. Winter snow makes roads at higher elevations impassable while only light to moderate snow is found at lower elevations. Summer thunderstorms often cause heavy downpours and localized flooding but may fail to dampen parched soils less than a mile away. Exhibit 2 shows the average monthly temperatures and precipitation in the Area's western region, calculated using weather data from 1991-2020.



**Exhibit 2 – Dinosaur National Monument Weather, Western Region**

	Jan	Feb	Mar	Apr	May	Jun	Jul	Aug	Sep	Oct	Nov	Dec
Average High Temp (°F)	31	38	50	59	70	83	89	86	76	61	45	31
Average Low Temp (°F)	12	17	27	33	42	51	58	56	47	36	24	14
Average Total Precipitation (inches)	.52	.63	.65	1.06	1.28	.68	.75	1.01	1.26	1.52	.70	.68
Average Total Snowfall (inches)	6.4	4.1	1.8	1.4	0.1	0	0	0	0	0.4	4.1	7.8

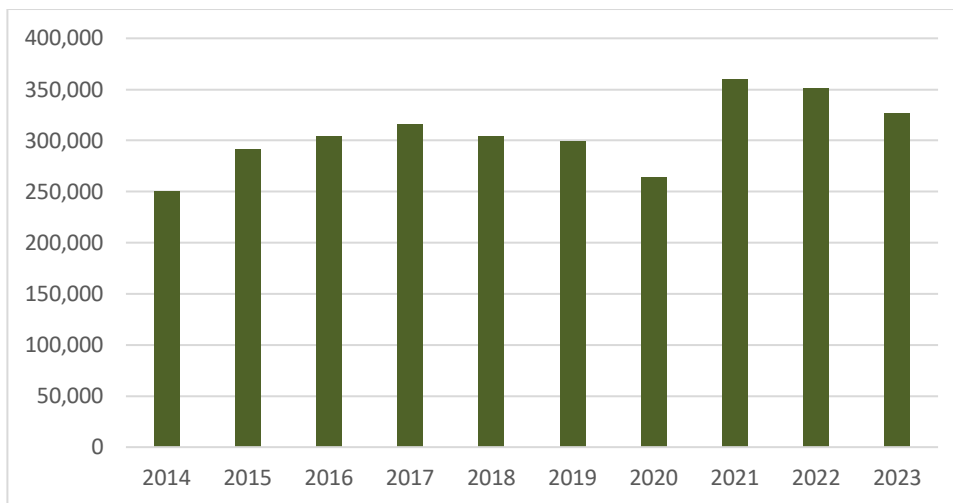
*Source: National Park Service*



## DINOSAUR NATIONAL MONUMENT VISITATION TRENDS

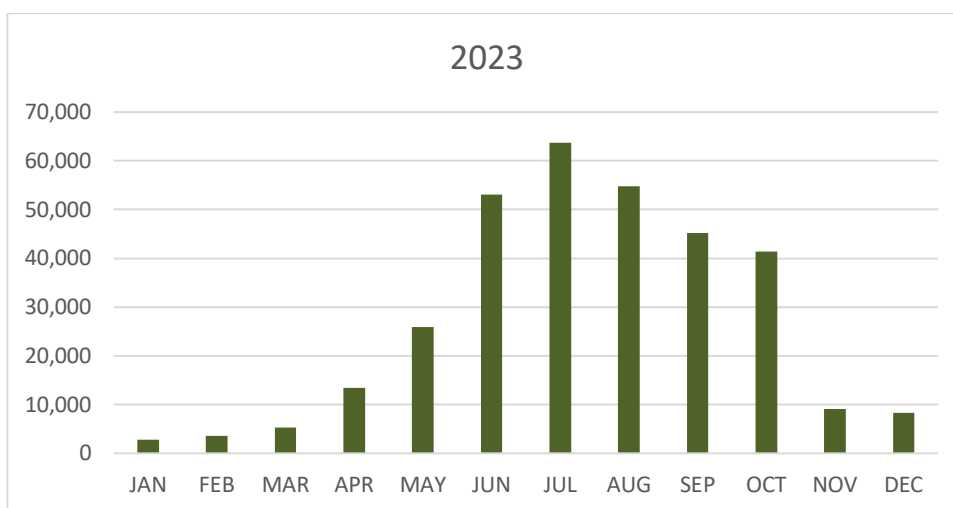
Dinosaur National Monument recreational visitation has generally increased over the last ten years, with a low of 250,625 in 2014 and a high of 359,560 in 2021. The visitation trends are in line with other NPS sites which saw a steady increase in visitation due to the NPS Centennial in 2016, a sharp decline in 2020 due to the COVID-19 pandemic, then a marked rebound in 2021.

### Annual Recreational Visitation to Dinosaur National Monument



Visitation to the Park is highly seasonal. Peak season runs from approximately May through October and accounts for approximately 83% of recreational visits to the Park. Low or winter season runs from November through April. Little whitewater rafting activity takes place during the winter season due to low temperatures and river flows.

### Monthly Recreational Visitation to Dinosaur National Monument in 2023



Additional visitation and visitor use statistics are available at <https://irma.nps.gov/Stats/>

## KEY ELEMENTS OF THE BUSINESS OPPORTUNITY

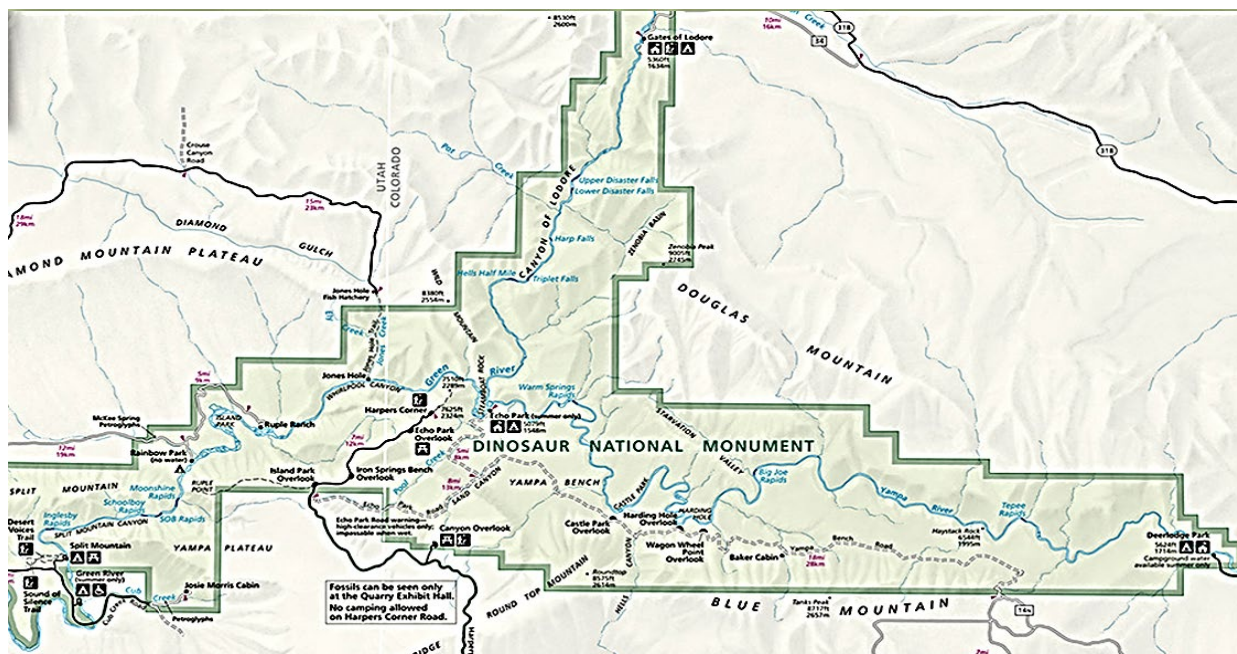
### OVERVIEW OF THE BUSINESS OPPORTUNITY

The following sections present the key elements of the business opportunity for the CC-DINOXXX-26 solicitation for 11 concession contracts to provide guided interpretive whitewater river trips in Dinosaur National Monument. If any inconsistency exists between the terms of the Draft Contract(s) and this Business Opportunity, the Draft Contract(s) will prevail. This section of this Prospectus describes the commercial visitor services required and authorized under the Draft Contract(s).

Guided Interpretive whitewater river trips in Dinosaur National Monument take place on two rivers - the Yampa and the Green. The Green River extends 730 miles from its headwaters in Wyoming to its confluence with the Colorado River in southern Utah. The river enters the Monument's northern boundary and flows out of the monument 58.5 miles later, just south of Split Mountain. Within Dinosaur National Monument, the Green's journey takes it through the Canyon of Lodore, Echo Park, Whirlpool Canyon, Island Park, and Split Mountain Gorge. The Green and its largest tributary, the Yampa River, meet at Steamboat Rock in Echo Park. Since the opening of Flaming Gorge Dam, 47 miles upstream from Dinosaur's boundary in November 1962, the Green River downstream from the dam has become clearer, cooler, and calmer than the cloudy and fluctuating flow it was before.

The Yampa River extends for nearly 250 miles from its source in the mountains of Colorado to its confluence with the Green River in Echo Park. For the last 47 of those miles, the Yampa River flows through Dinosaur National Monument entering on the monument's eastern boundary and joining the Green River at Echo Park. The Yampa is the last undammed tributary on the Colorado watershed and as such, has less predictable flow. In an average year, it is navigable for about 3 ½ months from spring thaw until it becomes too low. The Yampa's wild nature and unparalleled beauty are a big part of its attraction.

### Exhibit 5 – Dinosaur National Monument Map



Source: National Park Service. Available online at [www.nps.gov/dino](http://www.nps.gov/dino).

## TERM AND EFFECTIVE DATE OF DRAFT CONCESSION CONTRACT(S)

The CC-DINOXXX-26 Draft Contract(s) have a term of ten (10) years beginning on January 1, 2026, and ending on December 31, 2035.



## PREFERRED OFFEROR DETERMINATION

The Director, pursuant to the terms of 36 Code of Federal Regulations Part 51, has determined that ten of the eleven contracts described in this Prospectus CC-DINOXXX-26 are qualified Contract(s) and, therefore, the existing Concessioner(s) are Preferred Offerors for these Contracts. The Existing Concessioner must submit a responsive proposal to this Prospectus to be considered for award of the respective Contract. If the Existing Concessioner submits a responsive proposal and that proposal is not selected as the best proposal for that specific Contract, the Preferred Offeror designation allows it to match the terms of the best offer and be awarded the contract for which it submitted the proposal. The Existing Contracts and Concessioners are listed below.

Concession Contract	Concessioner	Preferred Offeror
CC-DINO001-16	AAM's Mild to Wild Rafting, Inc., dba Adventure Bound	Yes
CC-DINO002-16	American River Touring Association, Inc.	Yes
CC-DINO003-16	Colorado Outward Bound School	Yes
CC-DINO005-16	Holiday River Expeditions, Inc.	Yes
CC-DINO006-16	Don Hatch River Expeditions, Inc., dba O.A.R.S.	Yes
CC-DINO008-16	Dinosaur River Tours, LLC, dba Dinosaur River Expeditions	Yes
CC-DINO009-16	O.A.R.S. Canyonlands, Inc.	Yes
CC-DINO011-16	National Outdoor Leadership School	Yes
CC-DINO012-16	Griffith Expeditions, LLC	Yes
CC-DINO014-16	Eagle Outdoor Sports, Inc.	No
CC-DINO016-26	SUPCOLO, LLC, dba Adrift	Yes

## REQUIRED SERVICES AND AUTHORIZED SERVICES

The following exhibit describes the Required Services (i.e., must be provided by the Concessioner), Authorized Services (i.e., may be provided at the option of the Concessioner), and service locations as described in the Draft Contract(s). The required and authorized services under this business opportunity are not materially changed between the Existing Contracts and the Draft Contract(s). However, the Draft Contract Exhibit B Operating Plan includes several changes including enhanced requirements for guides and trip leaders, updated minimum use requirements and penalties for underutilization of river trip allocations, and requirements for special focus trips. Please refer to Draft Contract, Exhibit B, Operating Plan for additional details.

### Required Visitor Services under the Draft Contract(s).

	Service	Location
i.	Guided Interpretive Multi-day Whitewater River Trips	Green and Yampa Rivers
ii.	Guided Interpretive One-day Whitewater River Trips (DINO006 & DINO016 only)	Green River

### Authorized Visitor Services under the Draft Contract(s).

	Service	Location
i.	Transportation for clients participating in the activity (Transportation for other visitor activities is not authorized)	To and from Green and Yampa Rivers

## CHARACTERISTICS OF THE REQUIRED AND AUTHORIZED SERVICES

**Guided Interpretive Multi-day Whitewater River Trips.** The concessioner must provide guided interpretive multi-day whitewater river trips on the Green and Yampa Rivers within Dinosaur National Monument. Trips are typically three to four days when launching on the Green River and four to five days when launching on the Yampa River. The sheer cliffs and rugged terrain surrounding the river system allow access to the rivers at only a few places within the Area. The multi-day trips on the Green River launch from the Gates of Lodore, continue past the confluence with the Yampa at Echo Park, and take-out at the Split Mountain boat ramp. The Yampa River multi-day trips launch from Deerlodge Park, continue on the Green River at the confluence at Echo Park, and take-out at the Split Mountain boat ramp. Concessioners must provide clients with qualified guides, rafts, safety equipment, food and beverage, and interpretation of area resources throughout the duration of the river trip. Concessioners may provide personal camping equipment as an included amenity or for a fee.

Trips typically occur during the high-use season, which runs from the second Monday in May to the second Friday in September. Each concession contract is allocated a set number of high-use season launches (trips) per calendar year, as shown below. Low-season launches may be requested on an individual basis. Specific launch dates will be assigned by the Service through the Commercial Launch Calendar. Historically, the Service has assigned similar launch dates from year to year for each contract, but reserves the right to adjust launch dates, as needed. Launch dates may be exchanged between concessioners, with Service approval.



**Guided Interpretive One-day Whitewater River Trips (DINO006 and DINO016).** The Concessioner must provide guided interpretive one-day whitewater river trips on the Green River within Dinosaur National Monument. One-day trips will launch at Rainbow Park and take-out at Split Mountain. The Concessioner must provide clients with qualified guides, rafts, safety equipment, and interpretation of area resources throughout the duration of the river trip. Concessioners may provide food and beverage as an included amenity or for a fee.

**Transportation for Clients Participating in Whitewater River Trips.** The Concessioner may provide transportation for clients participating in its whitewater river trips. Transportation for other visitor activities (ie. tours) is not authorized. Transportation may only be provided in concessioner-owned or -leased vehicles, which meet all applicable state and federal requirements for commercial passenger transport. Transportation of client vehicles is not authorized.

## LAUNCH ALLOCATIONS BY CONTRACT

Each concession contract is allocated a set number of launches per calendar year, with specific launch dates assigned the year prior.

Contract	Launch Allocation
CC-DINO001-16	27
CC-DINO002-16	18
CC-DINO003-16	23
CC-DINO005-16	58
CC-DINO006-16	67
CC-DINO008-16	24
CC-DINO009-16	21
CC-DINO011-16	18
CC-DINO012-16	12
CC-DINO014-16	8
CC-DINO016-26	24

## MINIMUM USE

The Draft Contract(s), Exhibit B Operating Plan Section 4)C), identifies minimum use requirements. The Concessioner must utilize at least 50% of its assigned high-use trip allocations annually or the Service may act in accordance with the procedures outlined in the Operating Plan.

## COMMERCIAL RIVER TRIP PERMITS

The Concessioner will be issued a Commercial River Trip Special Use Permit for each multi-day river trip launch date assigned. Permits are typically issued 15 to 30 days prior to the launch date and must be carried by the Trip Leader at all times. The permit will specify the launch date, trip duration, launch and take-out locations, and campsites assigned. These are the only dates, launch locations, and campsites the Concessioner may use for that trip. Granting of a permit does not constitute a guarantee that natural and man-made manipulations in river flow will be sufficient for river use.

For single-day river trips (DINO006 and DINO016), the Concessioner will self-issue a Single-Day River Trip Special Use Permit using a Service-provided template for each trip, which must be carried during the trip. At the conclusion of the trip, the Concessioner must give the permit to a Service employee or place it in the Service-provided drop-box at the Split Mountain Boat Launch.



The Service is currently working to update its procedures for issuing river permits. In the future, concessioners may be required to procure permits online through [www.recreation.gov](http://www.recreation.gov), based on the launch dates assigned by the Service. Any changes to permit procedures will be communicated to concessioners in advance.



## INVESTMENT ANALYSIS

### LEASEHOLD SURRENDER INTEREST

There is no Leasehold Surrender Interest (as that term is defined in 36 C.F.R. Part 51) under the Existing or Draft Contract(s).

### ESTIMATED INITIAL INVESTMENT

The Service expects the Concessioner will incur start-up costs prior to commencing operations, including working capital, personal property, supplies, and inventory. Offerors must make their own determinations of the investment required to support their operations. As described in the Proposal Package section of this Prospectus, concessioners must demonstrate sufficient start-up funds in their proposals.

### PERSONAL PROPERTY

The Concessioner under the Draft Contract(s) will be required to provide such equipment, personal property, and inventory necessary for the proper and efficient operation of the services under the Draft Contract(s). The Existing Contract(s) does not require the Existing Concessioner(s) to sell its personal property, merchandise, inventory, or supplies used in the operation to the Concessioner.

The Service assumes the Concessioner replaces personal property at the end of its useful life, as required by the Draft Contract(s).

### ESTIMATED REVENUE AND EXPENSE PROJECTIONS

#### Rates

The rate approval method for the Draft Contract(s) is Competitive Market Declaration (CMD). The Concessioner can adjust rates without the specific administration of the Superintendent, but rates are subject to review to ensure they remain comparable to similar services offered outside Dinosaur National Monument. For more information see the Draft Contract(s) Exhibit B Operating Plan Section 2)B) Rate Determination and Approval and the 2017 Rate Administration Guide and 2024 Rate Administration Guide Addendum.

The 2017 Rate Administration Guide and 2024 Rate Administration Guide Addendum are available on the Commercial Services website at <https://www.nps.gov/subjects/concessions/rate-administration.htm>.

## Projected Departmental and Operating Expenses

The Service projects that most departmental and indirect expenses will be within industry average range.

## Insurance Requirements

The Service has included minimum insurance requirements in the Draft Contract(s). Interested parties should consider these requirements in preparing their proposals. Insurance requirements are found in Draft Contract(s) Exhibit D, Insurance Requirements.

## Park Entrance Fees

The Concessioner must ensure Dinosaur National Monument Entrance Fees are paid for all whitewater rafting clients, as applicable. Concessioners may pay fees for clients or must inform clients of entrance fee requirements and payment procedures prior to their trip. Guides are exempt from entrance fees when working in the park on behalf of the Concessioner; guides must identify themselves and the Concessioner at Park entrance stations.

## River Permit Fees

The Concessioner must pay Dinosaur National Monument River Permit Fees on behalf of all clients at the conclusion of the high-use season. Fees are assessed on a per-person basis. 2024 River Permit Fee amounts for commercial clients are provided below. The Service calculates the total amount due based on Concessioner post-trip reporting. The Service will assess the total amount of fees due and bill the Concessioner at the conclusion of the high-use season. The Concessioner is responsible for payment within 30 days of receipt.

Trip Type	River Permit Fee
Multi-Day	\$12/client
Single-Day	\$1.25/client

## Minimum Franchise Fee

The minimum franchise fee is three percent (3.0%) of the Concessioner's annual gross receipts or an annual flat fee of \$1,000, whichever is greater, for the term of the Draft Contract(s). Offerors must agree to pay the minimum franchise fee, as set out in Principal Selection Factor 5 of the Proposal Package (Part III of this Prospectus), although Offerors may propose higher franchise fees in accordance with terms of the Prospectus.

In determining the minimum franchise fee, the Service, using available industry data, considered the probable value to the Concessioner of the privileges granted by the Draft Contract. This probable value is based upon a reasonable opportunity for net profit in relation to capital invested and the obligations of the contract including anticipated revenues and expenses.

## Utilities

Few utilities are necessary in order to conduct river trips. During most of the high-use season, potable water



is typically available at Lodore, Echo Park, and Deerlodge Park; all located within the Area. This water is available for filling water storage containers for river trips and is available without charge to all river boating parties.

Human waste from river trips may be disposed of at a sewer dump station at the Split Mountain boat ramp. This service is available to all river boating parties, and there is currently no charge for this service.

All other types of waste and garbage generated by the Concessioner's river trips must be removed from the Area by the Concessioner at the conclusion of the river trip.



---

## HISTORICAL CONCESSION OPERATION

---

### EXISTING CONCESSIONS OPERATION

The required services are currently being provided by eleven concessioners under CC-DINOXXX-16. The original term of the Existing Contracts will expire on December 31, 2025.

The Existing Concessioners each offer guided interpretive whitewater river trips solely within Dinosaur National Monument or as an activity included with participants' registration in broader programming conducted outside the Park.

### HISTORIC RATES

For all Existing Contracts under CC-DINOXXX-16, the Competitive Market Declaration (CMD) rate method applied, and the Existing Concessioner(s) set rates without specific approval of the Superintendent. The CMD rate method will continue to be used in the Draft Contract(s).

### HISTORICAL FINANCIAL AND USE DATA

The Proposal Package requires Offerors to develop financial projections based on the Required Services under the Draft Contract(s). To assist Offerors in the development of these projections, the Service has provided information regarding historical gross revenue, franchise fees, and visitor use. Offerors should be appropriately cautious in the use of historical information. Offerors are responsible for producing their own pro forma financial projections and relying upon their own financial predictions.

## Historical Revenue

The following chart presents the 2021 – 2023 historical revenues for each Contract, as reported to the Service. The services under the Existing Contract(s) are similar to those required under the Draft Contract(s).

Contract	2021	2022	2023	Average Annual Franchise Fees
CC-DINO001-16	\$440,531	\$348,789	\$477,870	\$18,438
CC-DINO002-16	\$375,222	\$330,271	\$441,150	\$14,258
CC-DINO003-16	\$0	\$0	\$26,863	\$1,000
CC-DINO005-16	\$759,787	\$855,791	\$859,912	\$24,755
CC-DINO006-16	\$1,287,758	\$1,324,838	\$1,240,029	\$38,526
CC-DINO008-16	\$377,552	\$342,681	Pending	\$11,331
CC-DINO009-16	\$334,894	\$413,911	\$374,515	\$11,233
CC-DINO011-16	\$93,252	\$81,243	\$112,088	\$3,012
CC-DINO012-16	\$145,441	\$128,021	\$104,862	\$3,899
CC-DINO014-16	\$10,400	\$8,800	\$17,600	\$1,000
CC-DINO016-26	\$773,646	\$754,764	\$814,171	\$21,191

## Historic Use

The Existing Concessioners provided services comprising approximately 7137 visitors in 2023. The tables below present historical use from 2021 – 2023. Note some totals may include guides.

### Multi-Day Trips

Contract	2021 Trips	2021 Clients	2022 Trips	2022 Clients	2023 Trips	2023 Clients
CC-DINO001-16	24	449	23	317	28	454
CC-DINO002-16	17	340	16	308	16	340
CC-DINO003-16	0	0	0	0	1	10
CC-DINO005-16	55	872	55	939	52	887
CC-DINO006-16	54	966	46	850	43	1923
CC-DINO008-16	23	445	19	346	19	310
CC-DINO009-16	16	306	16	332	15	297
CC-DINO011-16	5	74	7	89	6	73
CC-DINO012-16	10	133	7	100	8	80
CC-DINO014-16	3	7	3	6	4	21
CC-DINO016-26	24	490	23	502	22	453

### Single-Day Trips

Contract	2021 Trips	2021 Clients	2022 Trips	2022 Clients	2023 Trips	2023 Clients
CC-DINO006-16	91	1720	86	1206	91	1118
CC-DINO016-16	95	1803	90	1319	82	1181



---

## SITE VISIT

---

No Concession Facilities are associated with the Draft Contract(s); therefore, no site visit will be conducted. Offerors are encouraged to visit the area to become familiar with physical conditions and limitations involved and become acquainted with the details requisite to operating the Draft Contract(s) services.

---

## QUESTIONS

---

If you plan to submit questions in response to this solicitation, you must submit questions to Jennifer Parker, Commercial Services Program Lead, NPS Regional Office Serving Interior Regions 6, 7, & 8, via email at [imr\\_concessions@nps.gov](mailto:imr_concessions@nps.gov) no later than 4:00 p.m. Mountain Time on the due date listed on the Inside Cover of this Prospectus. The Service will respond to questions by the Notice of Intent to Propose due date.

---

## NOTIFICATION OF INTENT TO PROPOSE

---

If you plan to submit a proposal in response to this solicitation, you must notify Jennifer Parker, Commercial Services Program Lead, NPS Regional Office Serving Interior Regions 6, 7, & 8, via email at [imr\\_concessions@nps.gov](mailto:imr_concessions@nps.gov) no later than 4:00 p.m. Mountain Time on the Notice of Intent to Propose date listed in the Inside Cover of this Prospectus. The Service will not accept proposals from entities that do not provide notice on or before this deadline. **See Proposal Instructions for additional guidance on how to submit the Notification of Intent to Propose.**

-- END Part I: Business Opportunity --

