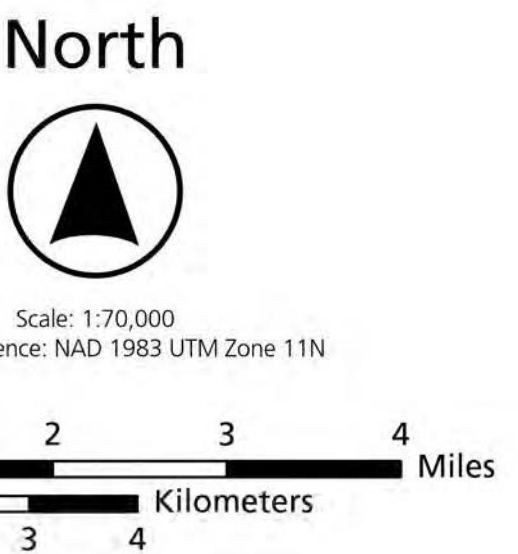
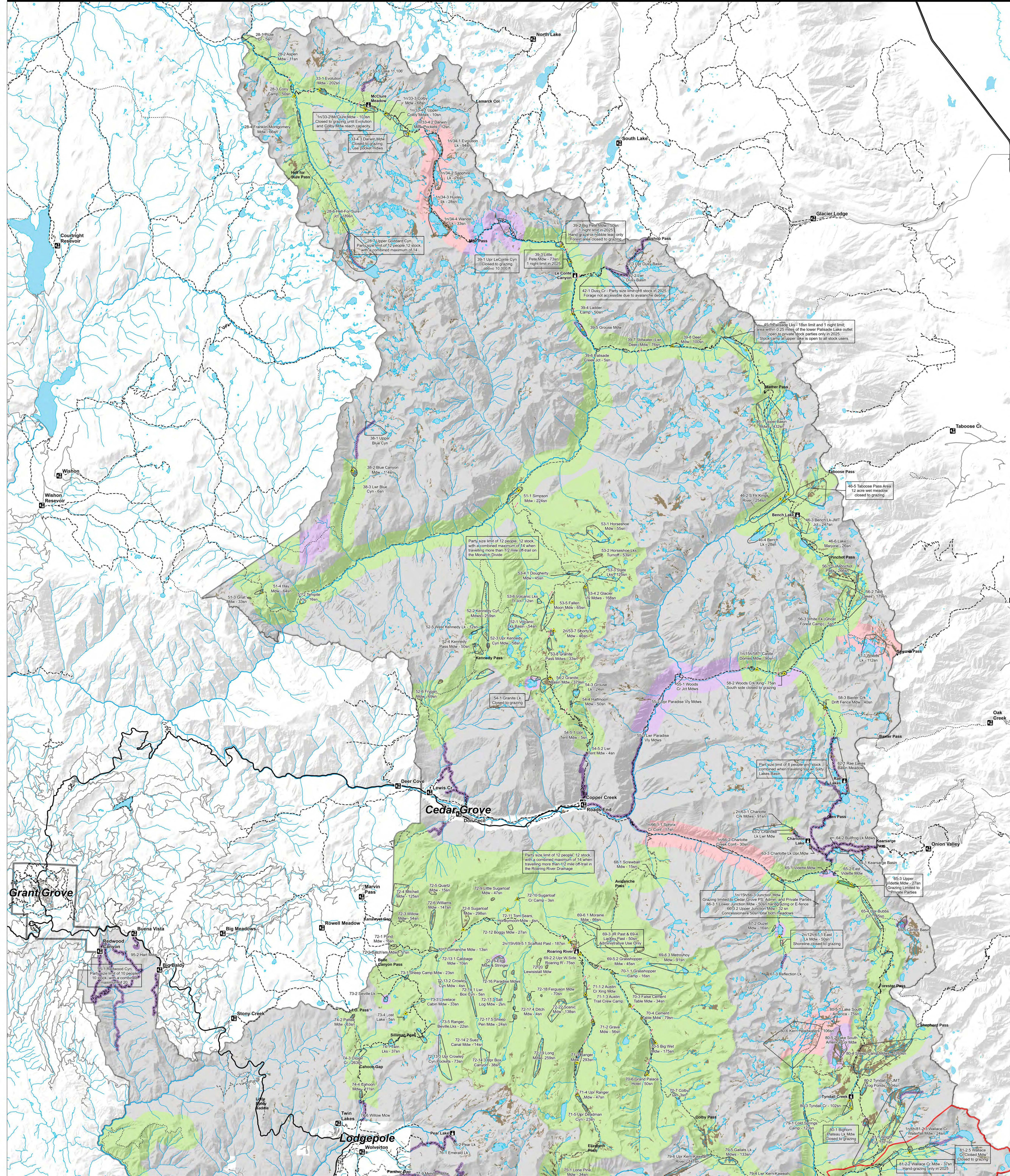




# 2025 Stock Use and Grazing Regulations, Kings Canyon National Park



## Stock Use Regulations

- |  |                                                  |  |                                                                                                                                          |
|--|--------------------------------------------------|--|------------------------------------------------------------------------------------------------------------------------------------------|
|  | Grazing generally allowed; Camping allowed       |  | Closed to all stock travel                                                                                                               |
|  | Grazing by private parties only; Camping allowed |  | Grazing allowed for walking parties with burros and llamas; Closed to grazing for parties with horses and mules; Camping allowed for all |
|  | Grazing by administrative use only               |  | Closed to grazing for walking parties with burros and llamas; camping allowed; day use only for parties with horses and mules            |
|  | Closed to grazing; Camping allowed               |  | Closed to grazing for walking parties with burros and llamas; camping allowed; closed to parties with horses and mules                   |
|  | Closed to grazing; Day use only, no camping      |  |                                                                                                                                          |

## Other Features

- |  |                                     |  |                            |
|--|-------------------------------------|--|----------------------------|
|  | National Park                       |  | Stock Trailheads           |
|  | Mt. Whitney Management Area         |  | Wilderness Ranger Stations |
|  | Meadow Vegetation                   |  | Drift Fence or Gate        |
|  | Class 1 Trail: Minimally Developed  |  | Large Stock Camp           |
|  | Class 2 Trail: Moderately Developed |  | Small Stock Camp           |
|  | Class 3 Trail: Developed            |  |                            |

## Interpreting meadow labels

- The background color indicates whether grazing, camping, and/or travel is allowed for stock. Grazing restrictions and party size limits for some areas are indicated with a text box.
- Limits on the number of consecutive nights grazing are shown in the label as: # n
- Limits on the number of animals which can graze are shown in the label as: # h
- Estimated limits on the total number of stock nights by all users in a season (i.e. overall grazing capacity) are shown in the label as: # sn
- The name of the meadow may be abbreviated.
- The meadow number precedes the meadow name. Use this number to report use and reference other materials such as opening date bulletins and the stock user's guide.

This map is intended for use in conjunction with other bulletins, guides, and flyers. Additional information regarding current conditions may be obtained at <https://www.nps.gov/seki/planyourvisit/wilderness.htm> or by calling the Sequoia and Kings Canyon National Parks Wilderness Office at (559) 565-3766.

Any person using the information presented here should fully understand the method by which the data were derived and the limitations of the data. The meadow or forage areas were identified on 1:16,000 monochromatic aerial photography, then hand-drawn onto 1:24,000 USGS topographic quadrangles. Use at scales finer than 1:24,000 is not recommended. The burden for determining fitness of use lies with the user.

Produced by SEKI Plant Ecology  
Revised: 4/28/2025