



Virtual Public Meeting for Parks Visitor Experience and Access Plan December 12, 2022

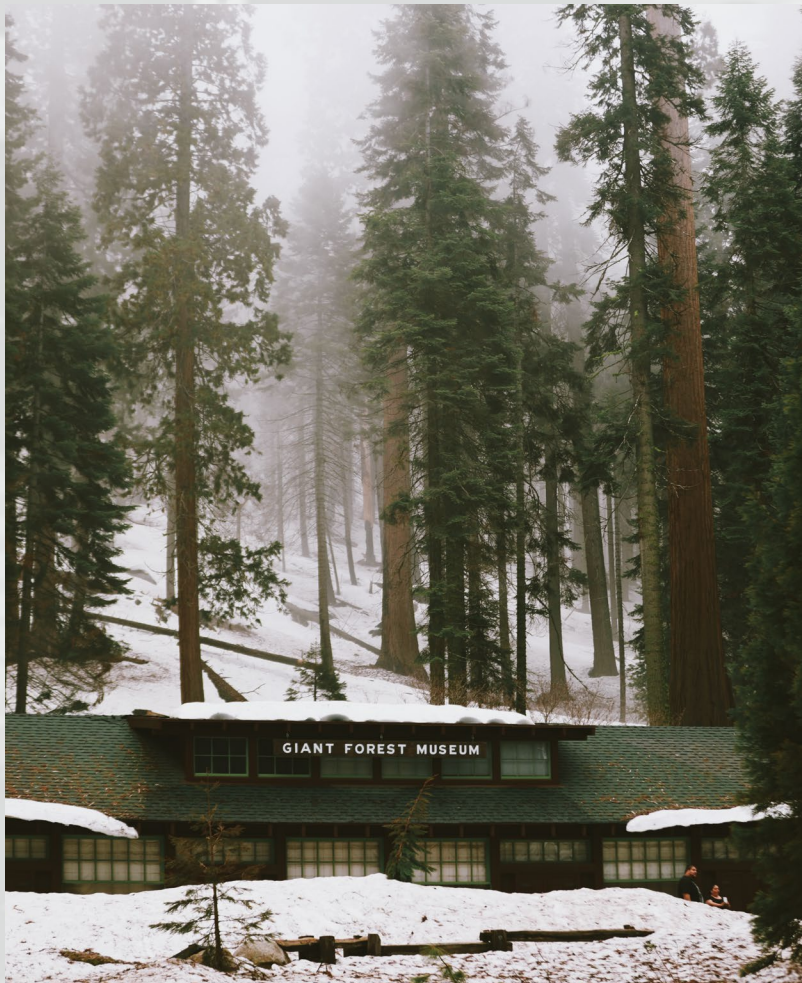




Welcome!



Project Purpose



This process will include evaluating:

- Visitor access to key areas
- Travel to and within the park
- Visitor experiences at key frontcountry destinations

We Need Your Help!

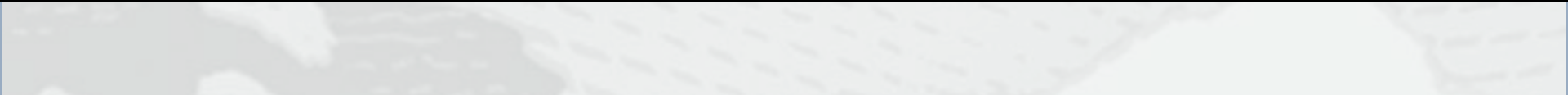


- To learn more about the planning effort and provide feedback, please visit: <https://parkplanning.nps.gov/SEKIFrontcountryFall2022>



Adjust the sound

Captions



Search or type a command



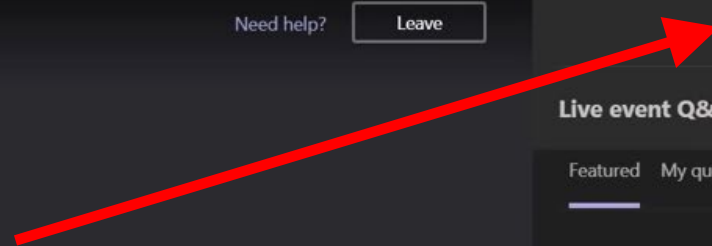
OneDrive Demonstration

Need help?

Leave



View or hide Q&A



Live event Q&A ?



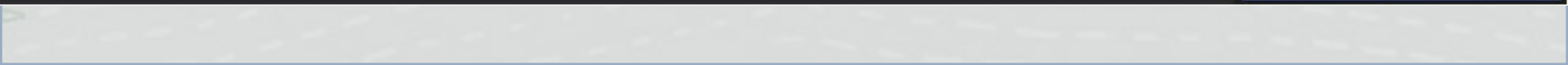
Featured My questions Most recent v



No featured questions yet

Ask a question

The live event hasn't started





Presentation Overview

1 | Introduction to the Parks

2 | Need for the Plan

3 | Project Goals

4 | Planning Process

5 | YOUR Critical Role

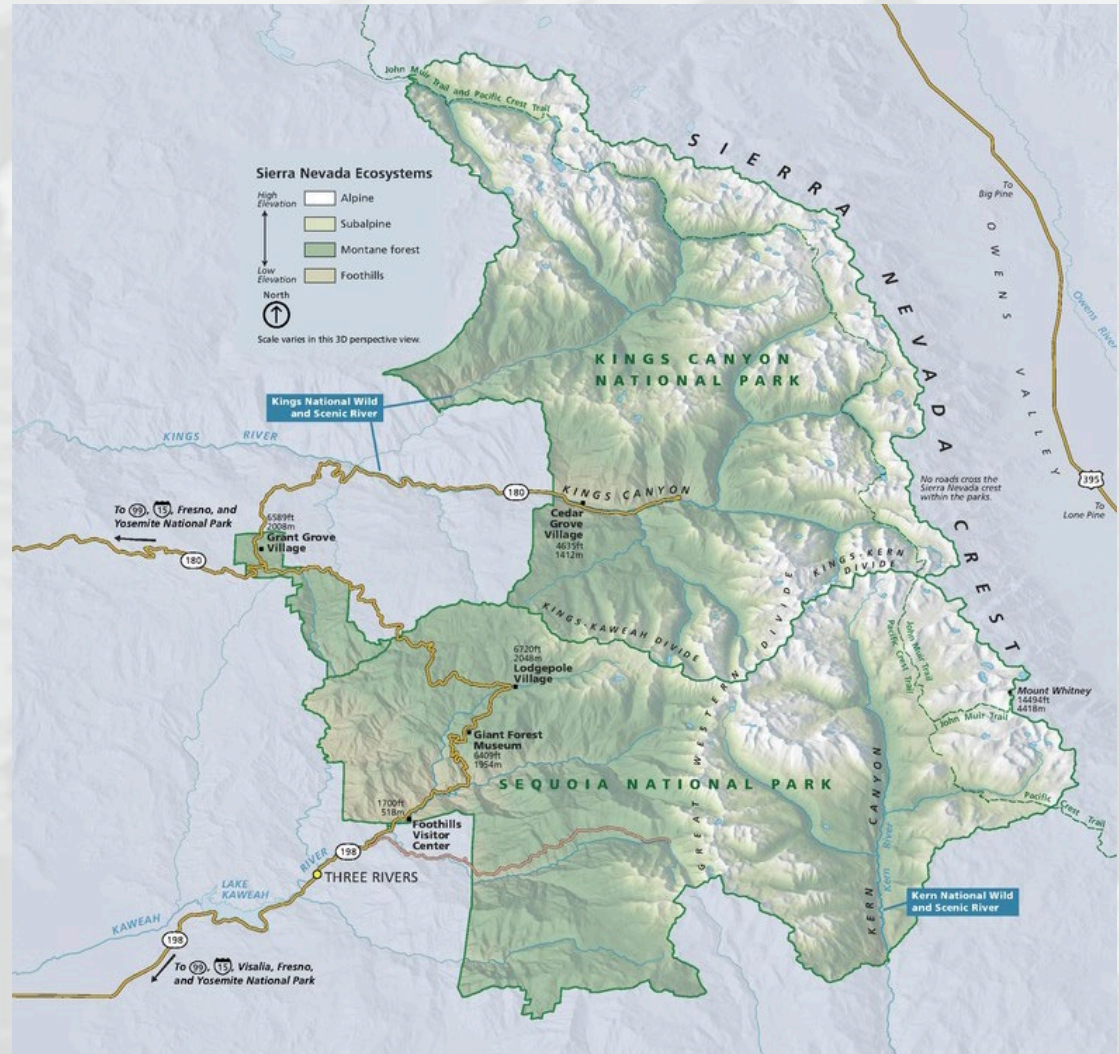


1 | Introduction to the Parks





The Parks



Park Purpose



Park Significance



Significance Statements

Why the resources and values of the parks are important enough to warrant national park designation

Fundamental Resources and Values

What critical features, systems, organisms, processes, experiences, and other attributes contribute to the park purpose and significance

Park Significance – Resources and Values



Giant Sequoias



Ecological Diversity



Geologic Resources



Water Resources

Park Significance – Resources and Values



Wilderness Character



Conservation History



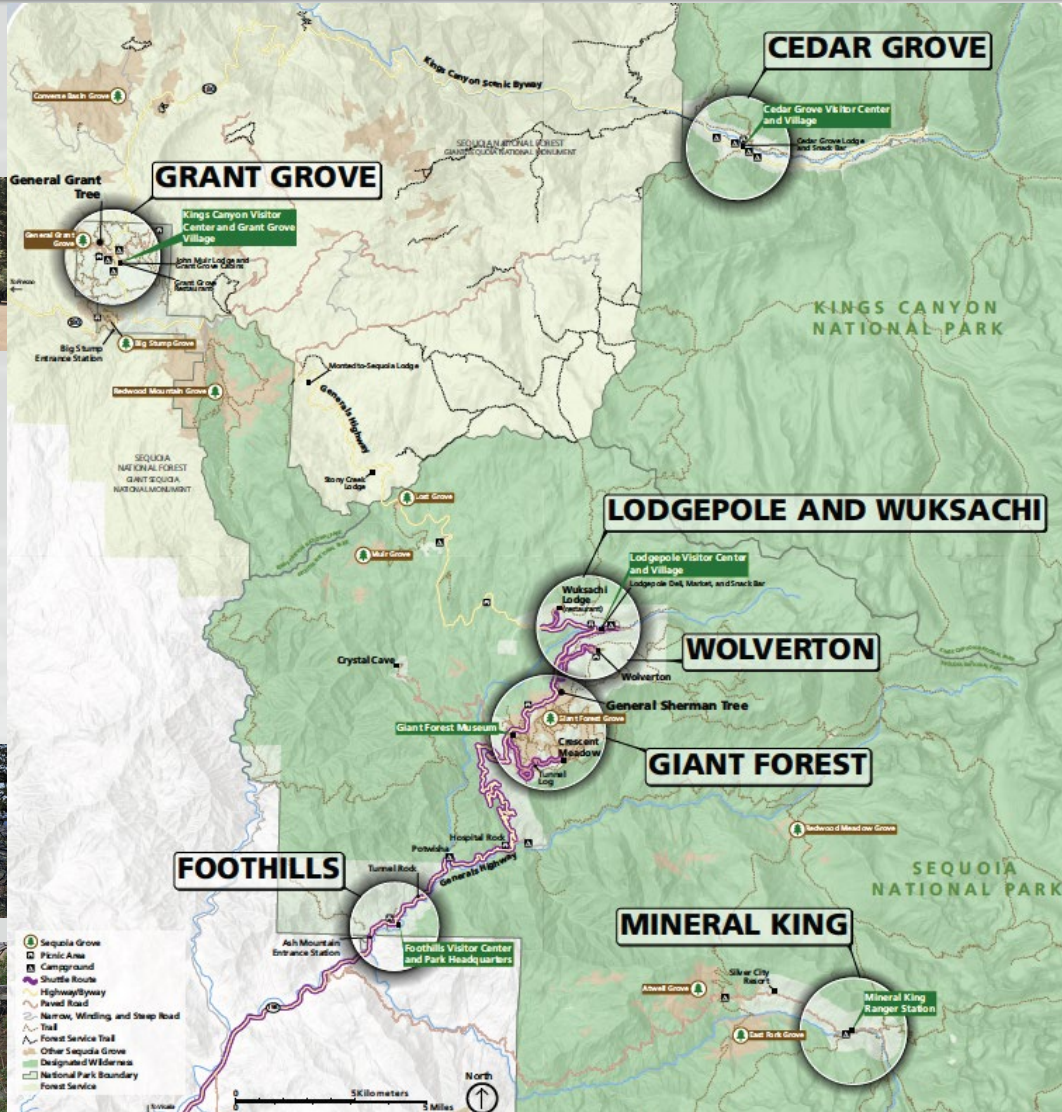
Range of Visitor Experiences



Learning and Stewardship



Key Park Areas within the Plan





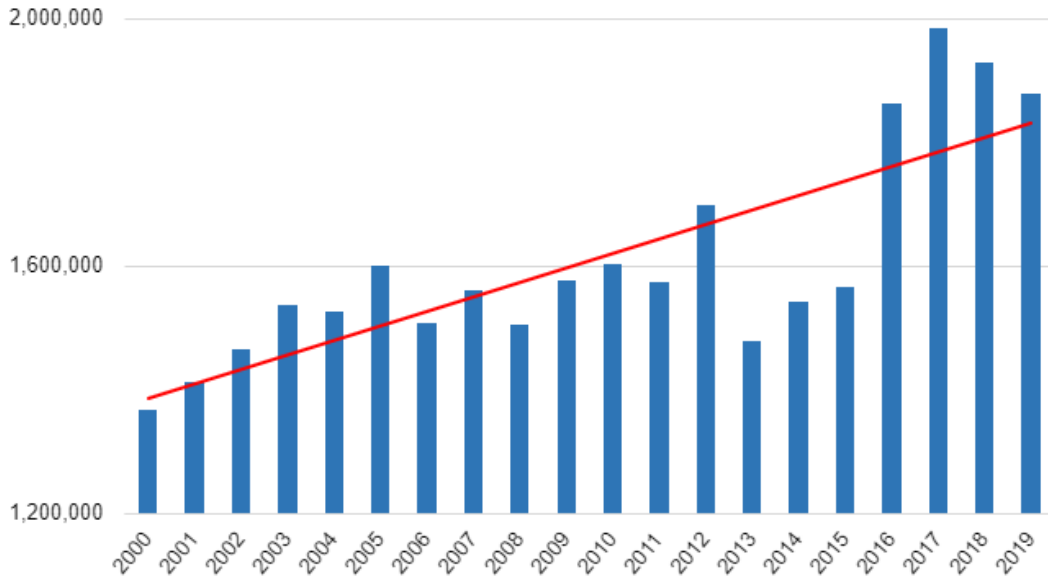
2 | Need for the Plan





1 Increased Visitation

Annual Visitation to Sequoia and Kings Canyon National Parks (2000 to 2019)



2 Roadway Congestion

Concentrated Visitor Arrivals Often Lead To

- Major backups and long wait times to enter the parks
- Inadequate visitor orientation upon arrival
- Congestion at key sites
- Increased safety concerns along roadways
- Restricted access for residents and businesses in gateway communities



3 Parking Lot Congestion



Parking Congestion and Effects

- Most apparent during summer weekends and winter holidays
- Leads to visitor-created parking
- Increased risk of pedestrian/vehicle conflicts and accidents

Limited Use of Some Parking Areas

- Some parking options are not well known or located some distance from key destinations

4 Infrastructure

- Most facilities cannot handle current and potential increased visitation.
- Wait times can be long at bathrooms, campgrounds, and shuttle stops.
- Opportunities exist to expand Architectural Barriers Act accessibility.
- Opportunities exist to reduce deferred maintenance.





5 Winter Access

- Limited infrastructure for winter
- Reduced winter opportunities
- Inability to effectively accommodate winter use visitation



6 Quality of Visitor Experience

Diminished Visitor Experiences

- Crowding
- Roadway congestion
- Long lines
- Inadequate facilities and services at key destinations





3 | Project Goals



Project Goals



Develop long-term strategies for providing safe access while connecting visitors to key experiences.



Incorporate best practices for managing visitor use to protect resources and promote high-quality visitor experiences.



Protect and preserve key resources that contribute to the purpose and significance of these national parks.



4 | Planning Process





Planning Process

1

**Phase 1:
Problem Analysis**

- Define purpose and need for the project
- Initiate civic engagement

We
are
here

2

**Phase 2:
Explore Solutions**

- Explore potential strategies
- Continue civic engagement: Request public input to inform plan development

3

**Phase 3:
Decision Making**

- Refine strategies and draft plan
- Continue civic engagement: Request public input to refine plan
- Finalize plan



5 | Your Critical Role



We Want to Hear from You!

How Can You Participate?

- Learn more and provide feedback through January 17, 2023, by visiting <https://parkplanning.nps.gov/projectHome.cfm?projectId=111599>.
- Comments will inform decision making and priority setting for public investments.





We Want to Hear from You!

- 1** What experiences in Sequoia and Kings Canyon National Parks are most important to you?
- 2** What barriers get in the way of enjoying or visiting Sequoia and Kings Canyon National Parks?
- 3** What can the park do to better address these barriers?
- 4** What is the park doing well to manage these issues that you would like to see continue?

We Want to Hear from You!

How Can You Participate?

- Learn more and provide feedback through January 17, 2023, by visiting <https://parkplanning.nps.gov/projectHome.cfm?projectId=111599>.
- Comments will inform decision making and priority setting for public investments.





Questions?





Sequoia and Kings Canyon National Parks

