



National Park Service
U.S. Department of the Interior

2025 Superintendent's Compendium

April 4, 2025 Replaces September 30, 2024 version
September 23, 2025 Replaces April 4, 2025 version
Of Designations, Closures, Permit Requirements and
Other Restrictions Imposed Under Discretionary
Authority.

Salinas Pueblo Missions National Monument
105 S. Ripley Ave.
Mountainair, NM 87036

505-847-2585 phone
505-847-2441 fax



Abó - March 2020/NPS.

Authority

Designations, Closures, Permit Requirements, and other Restrictions and/or Specifications Imposed Under the Discretionary Authority of the Superintendent, Title 36 Code of Federal Regulations (CFR), Chapter 1.

In accordance with regulations and the delegated authority provided in Title 36, CFR, Chapter 1, Parts 1-7, authorized by Title 16 United States Code (USC), Section 3, the following compendium actions are established for the proper management, protection, government and public use of Salinas Pueblo Missions National Monument. Unless otherwise stated, these regulatory provisions apply in addition to the requirements contained in 36 CFR, Chapter 1, Parts 1-7.

Written determinations, which explain the reasoning behind the Superintendent's use of discretionary authority, as required by Section 1.5(c), appear in this document identified by italicized print.

Section 1.6(f) states that a list of those activities that require a permit must be maintained. That list appears in this document under 36 CFR § 1.6.

As required by 1.7(b), designations, closures, permit requirements, and other restrictions imposed under discretionary authority shall be updated annually and made available to the public through the monument's website: nps.gov/SAPU

Approved by: Kathy Faz Garcia, Superintendent

Date

Updated on 9/23/2025

Contents

I. 36 CFR §1.5 – Visiting Hours, Public Use Limits, Closed Areas, and Area Designations for Specific Use or Activities	4
▪ Hours of Operation	4
▪ Public Use Limits	4
▪ Closed Areas.....	4
▪ Unmanned Aerial Vehicles (UAVs).....	5
▪ First Amendment Activities.....	6
▪ Passenger Carrying Busses.....	6
▪ Geo-caching	6
II. 36 CFR 1.5(a)(2) - Designate Areas for a specific use or activity or impose conditions or restrictions on a use or activity	7
III. 36 CFR §1.6 – Activities That Require a Permit	7
▪ §2.4(d) Carry or possess a weapon, trap, or net.....	8
▪ §2.2 (d)(4) Transporting lawfully taken wildlife through the Monument.	8
▪ § 2.5(b) Specimen collecting, research, and some science education activities.	8
▪ § 2.12 Creating Audio Disturbances.....	8
▪ § 2.17 Aircraft and Air Delivery.....	8
▪ § 2.37 Soliciting or Demanding Gifts, Money, Goods or Services (Pursuant to the terms and conditions of a permit issued under § 2.50, § 2.51 or § 2.52)	8
▪ § 2.38 Using or Possessing Explosives.....	8
▪ § 2.50 Conducting a sports event, pageant, regatta, public spectator attraction, entertainment, ceremony, or similar events.....	8
▪ §2.51 Conducting a public assembly, meeting, gathering, demonstration, parade or other public expression of views	8
▪ § 2.52 Selling or distributing printed matter that is not solely commercial advertising	8
▪ § 2.62 Memorialization	8
▪ § 5.1 Displaying, posting, or distributing advertisements	8
▪ § 5.5 <i>Some filming, still photography, and audio recording (depends upon the facts and circumstances; contact the park for more information). 36 CFR 1.5(a)(2) and 54 U.S.C. 100905.</i>	8
IV. General Regulations	8
36 CFR §2.1 – PRESERVATION OF NATURAL, CULTURAL AND ARCHEOLOGICAL RESOURCES	8
▪ Hiking or Pedestrian Traffic.....	9
36 CFR §2.2 – WILDLIFE PROTECTION.....	9

36 CFR §2.4 – WEAPONS, TRAPS, AND NETS	10
36 CFR §2.10 – CAMPING AND FOOD STORAGE.....	11
36 CFR §2.11 – PICNICKING.....	11
36 CFR §2.13 – CONDITIONS ON LIGHTING OR MAINTAINING A FIRE	11
36 CFR §2.14 – SANITATION AND REFUSE	11
36 CFR §2.15 – PETS.....	12
36 CFR §2.16 – HORSES AND PACK ANIMALS.....	12
36 CFR §2.19 – WINTER ACTIVITIES	13
36 CFR §2.20 – SKATING, SKATEBOARDS, AND SIMILAR DEVICES.....	13
36 CFR §2.21 – SMOKING.....	13
36 CFR §2.22 – PROPERTY.....	14
36 CFR §2.35 – ALCOHOLIC BEVERAGES AND CONTROLLED SUBSTANCES	14
36 CFR §2.62 – MEMORIALIZATION.....	14
36 CFR §4.21 – SPEED LIMITS.....	14
36 CFR §4.30 – BICYCLES.....	15
Appendix A.....	16
First Amendment Area Maps.....	16
Appendix B.....	21
Closed Area Maps	21

I. **36 CFR §1.5 – Visiting Hours, Public Use Limits, Closed Areas, and Area Designations for Specific Use or Activities**

(a)(1) The following visiting hours and public use limits are established for all or for the listed portions of the Monument, and the following closures are established for all or a portion of the Monument to all public use or to a certain use of activity:

▪ **Hours of Operation**

- Monument hours change seasonally and may be reduced due to staffing. Up to date hours of operation are posted on the Monument's website:
<https://www.nps.gov/sapu/planyourvisit/hours.htm>

Hours of operation are general closures and do not consider special use permits signed by the Superintendent, registered guests, or Monument-sponsored events.

Determination: *The hours of operation at sites are set to provide maximum visitor satisfaction, enhance visitor safety and for resource protection. These hours are also set to deter vandalism and theft of natural, cultural, and archaeological resources, and minimize disruption to wildlife.*

▪ **Public Use Limits**

The following areas will have a public use limit during Monument sponsored events and permitted activities:

- ❖ Abó Mission Church: 50 visitors
- ❖ Abó Interpretative Shelter: 50 visitors
- ❖ Quarai Mission Church: 100 visitors
- ❖ Quarai picnic area: 100 visitors
- ❖ Quarai bridge area: 25 visitors
- ❖ Gran Quivira San Buenaventura Mission Church: 50 visitors

Determination: *Public use limits are set to ensure protection of resources while also providing visitor experience. The archaeological sites of Abo, Gran Quivira, and Quarai are unique and fragile resources. These public use limits apply to programs, events, and special use permits.*

▪ **Closed Areas**

- ❖ Abó
 - All public lands other than the established roads, trails and visitor use facilities, the picnic area, and the residence easement.
 - The petroglyph panel and rock shelter are closed to the public. Special access for research or tribal visits can be granted by approval from the Superintendent. To inquire about special access, contact the main visitor center at 505-847-2585.
- ❖ Gran Quivira
 - All park lands other than the entrance road, the interpretive trail system, the picnic area and the visitor use facilities (including all park lands east of the point where the service road from the water tank meets the large plaza on the east side of Mound 7.)
- ❖ Quarai Unit
 - All park lands other than established entry road, the interpretive trail system, the picnic area, and visitor use facilities.

Determination: *Salinas Pueblo Missions National Monument was established to protect and interpret the unique cultural resources it contains. To provide for this protection visitor use is allowed only in the designated areas along designated walkways.*

- Specific areas within Salinas Pueblo Missions National Monument may be closed to employees and/or visitors when, the superintendent or his/her designee determine, there are conditions that warrant such a closure. These conditions may include, but are not limited to, extreme fire danger, fires, hazardous conditions, operational needs, or construction. This determination is made for both visitor and employee safety.

Determination: *This type of closure is to provide for visitor and employee safety and to preclude interference with emergency and administrative operations by visitors.*

- Temporary closures may occur in areas where archaeological or paleontological excavations are being conducted or where public access may endanger sensitive archaeological or paleontological resources.

Determination: *This type of closure precludes interference with paleontological and archaeological excavations by visitors. When NPS personnel are available, they may provide guided interpretive trips to these excavations for visitors.*

- Closures of visitor use areas (picnic areas, trails, interpretive stops, etc.) may occur when necessary, by posting appropriate signs to mitigate resource impacts with overuse, misuse, environmental, or health and safety issues.

Determination: *These closures may be required for resource or visitor protection. Examples of this type of closure include social trail closures for re-vegetation, building closures due to safety issues, trail closures due to hazardous conditions, etc.*

- **All-terrain Vehicles (ATVs/UTVs/OHVs)**

All vehicles operating in the park must have a valid state or government-issued vehicle registration and license plate issued for public highway travel. The New Mexico Off-highway motor vehicle (OHV) registration license plate issued under the New Mexico Off-highway Motor Vehicle Act, NMSA 1978, § 66-3-1001, does not meet this standard. Unregistered OHVs, including but not limited to ATVs, UTVs, golf carts, dune buggies, and any other non-highway vehicles, are prohibited from being operated in the park.

Determination: *The State of New Mexico requires all vehicles operating on public highways to meet state registration, inspection, and insurance requirements.*

- **Unmanned Aerial Vehicles (UAVs)**

Launching, landing, or operating an unmanned aircraft from or on lands and waters administered by the National Park Service within the boundaries of Salinas Pueblo Missions National Monument is prohibited except as approved in writing by the Superintendent.

Definition: The term "**unmanned aircraft**" means a device that is used or intended to be used for flight in the air without the possibility of direct human intervention from within or on the device, and the associated operational elements and components that are required for the pilot or system operator in command to operate or control the device (such as cameras, sensors, communication links). This term includes all types of devices that meet this definition (e.g., model airplanes, quadcopters, drones) that are used for any purpose, including for recreation or commerce.

Determination: *Presently the NPS is considering how to address UAV's on a long-term basis and allowing this use before the park has properly evaluated whether this use is appropriate could result in unacceptable impacts to park resource, values, and visitor safety. Unmanaged or unrestricted recreational use of Model Aircraft and UASs within Salinas Pueblo Missions National Monument will conflict with, or impact, a variety of park uses including visitor experience of*

unimpaired view sheds; the disturbance, displacement or harassment of park wildlife; creation of public safety hazards per operation near roadways or large aggregations of visitors, and visual or aural impacts to wilderness character and values within the park backcountry.

(a)(2) The following areas have been designated for a specific use or activity, under the conditions and/or restrictions as noted:

▪ **First Amendment Activities**

Public gatherings or demonstrations including, but not limited to, religious observances or distribution of related materials may be held only in the following designated areas (See Appendix A for maps of the areas):

- ❖ Mountainair Visitor Center and Museum
 - the parking area next to the fountain area
- ❖ Abo
 - Primary: the first four parking areas closest to the visitor center in the visitor center parking lot.
 - Secondary: in front of the visitor center on the looped gravel pathway.
- ❖ Gran Quivira
 - the RV parking area on the west side of the parking lot.
- ❖ Quarai
 - RV parking area by the well house.

- 1) Demonstrations involving 25 persons or fewer may be held without a permit within designated park areas.
- 2) Groups of 25 or more may not circumvent the permit process by breaking into smaller groups.
- 3) Activities may include the use of hand-carried signs, but not stages, platforms, or structures.
- 4) The use of loudspeakers or other sound amplifying devices without a permit is prohibited.
- 5) Normal pedestrian traffic may not be impeded by activities under this section.

Determination: *In order to accommodate Freedom of Speech Activities, the Superintendent has designated the areas as shown on the attached map where such activities may take place. Groups of 25 or more are required to obtain a permit. The Superintendent will issue permits upon request after deciding that the requested activity will not have an adverse impact on public health and safety, environmental or scenic values, natural or cultural resources, scientific research, implementation of management responsibilities, proper allocation and use of facilities, or the avoidance of conflict among visitor use activities. The Superintendent must remain content neutral when evaluating the issuance of a permit for First Amendment activities. Use of these areas will be on a “first come, first served” basis. A group holding a permit will NOT have priority over a smaller group already in place.*

The following restrictions and/or conditions are in effect for the specific uses or activities:

▪ **Passenger Carrying Busses**

Allowing bus engines to idle while parked at any of the sites or the Mountainair Visitor Center parking lot is prohibited.

Determination: *The idling of bus engines adds unnecessary exhaust fumes to the air and diminishes the enjoyment by visitors of the peace and tranquility of the park.*

▪ **Geo-caching**

The creation or maintenance of a “geo-cache” containing any physical items within the Monument is prohibited. “Virtual” caches may be created and maintained if they meet the designated management conditions of the location. Conditions include consistency with park management

plans such as not encouraging off-trail travel or travel in closed areas, visitor safety considerations, and the protection of resources (Geo-caching is also a violation of 36 CFR, Section 2.22(a) – Property).

Determination: *The establishment of geo-caches has the potential to disturb the sensitive cultural resources that Salinas Pueblo Missions National Monument was established to protect.*

II.36 CFR 1.5(a)(2) - Designate Areas for a specific use or activity or impose conditions or restrictions on a use or activity.

- Filming, still photography, and audio recording activity may require a permit, consistent with 54 U.S.C. 100905.
 - Filming, still photography, and audio recording activity that occurs in closed areas, requires exclusive use of a site or area, or involves a set or staging equipment other than handheld equipment (such as a tripod, monopod, and handheld lighting equipment) requires a permit, unless the activity is affiliated with an activity or event that has been allowed under a written authorization, such as a special use permit.
 - Filming, still photography, and audio recording that involves more than eight individuals requires a permit, unless the NPS has specifically notified an individual or group that a permit is not required, or if the activity is affiliated with an activity or event that has been allowed under a written authorization, such as a special use permit.
 - If a permit is required for the reasons stated above, or if the NPS otherwise determines and then notifies an individual or group that a permit is required for a filming, still photography, or audio recording activity, then engaging in that activity without a permit is prohibited. Violating a term or condition of a permit issued by the NPS for a filming, still photography, or audio recording activity is prohibited, and may result in the suspension or revocation of the permit, in addition to any penalties that may apply under 36 CFR 1.3.

Federal law at 54 U.S.C. 100905 states that permits and fees are not required for filming, still photography, or audio recording in park areas if certain requirements are met. These requirements address various topics, including, but not limited to, group size, location, equipment, potential impacts to resources and visitors, and the likelihood that the NPS will incur related administrative costs. If any of these requirements are not met, the law allows the Secretary of the Interior, acting through the NPS, to require a permit for the subject activity. Permit requirements are imposed by the superintendent under discretionary authority provided by 36 CFR 1.5(a)(2), which allows the superintendent to impose conditions or restrictions on a use or activity, consistent with applicable legislation, to implement management responsibilities. The general regulations for permits in 36 CFR 1.6 do not apply to permits issued for filming, still photography, and audio recording, which instead are governed by the statutory provisions in 54 U.S.C. 100905. The imposition of permit requirements, on a case-by-case basis, for filming, still photography, or audio recording does not require rulemaking under 36 CFR 1.5(b). Requiring a permit with reasonable terms and conditions in accordance with statutory requirements at 54 U.S.C. 100905 is not highly controversial, will not result in a significant alteration in the public use pattern of the System unit, will not adversely affect the System unit's natural, aesthetic, scenic or cultural values, or require a long-term or significant modification in the resource management objectives of the System unit, because the permit requirement is limited in time and scope to the specific activities authorized by the permit, which contain terms and conditions that protect the values, resources, and visitors of the System unit, and implements federal law.

III. 36 CFR §1.6 – Activities That Require a Permit

(f) The following is a compilation of those activities for which a permit is required:

- **§2.4(d) Carry or possess a weapon, trap, or net**
 - As authorized by the Superintendent after a determination that such devices are necessary for the specific activities or programs, such as research, wildlife control, or special programs.
- **§2.2 (d)(4) Transporting lawfully taken wildlife through the Monument.**
- **§ 2.5(b) Specimen collecting, research, and some science education activities.**
Note: When permits are required for scientific activities pertaining solely to cultural resources, including archeology, ethnography, history, cultural museum objects, cultural landscapes, and historic and prehistoric structures, other permit procedures apply and will be outlined during the permitting process.
- **§ 2.12 Creating Audio Disturbances**
 - (a)(2) Operating a chain saw in developed areas
 - (a)(3) Operating any type of portable motor or engine, or device powered by a portable motor or engine in non-developed areas
 - (a)(4) Operating a public address system in connection with a public gathering or special event for which a permit has been issued pursuant to § 2.50 or § 2.51
- **§ 2.17 Aircraft and Air Delivery**
 - (a)(3) Delivery or retrieval of a person or object by parachute, helicopter, or other airborne means
 - (c)(1) Removal of a downed aircraft
- **§ 2.37 Soliciting or Demanding Gifts, Money, Goods or Services (Pursuant to the terms and conditions of a permit issued under § 2.50, § 2.51 or § 2.52)**
- **§ 2.38 Using or Possessing Explosives**
 - (a) Using, possessing, storing, or transporting explosives, blasting agents
 - (b) Using or possessing fireworks
- **§ 2.50 Conducting a sports event, pageant, regatta, public spectator attraction, entertainment, ceremony, or similar events**
- **§2.51 Conducting a public assembly, meeting, gathering, demonstration, parade or other public expression of views**
- **§ 2.52 Selling or distributing printed matter that is not solely commercial advertising**
- **§ 2.62 Memorialization**
- **§ 5.1 Displaying, posting, or distributing advertisements**
- **§ 5.5 Some filming, still photography, and audio recording (depends upon the facts and circumstances; contact the park for more information). 36 CFR 1.5(a)(2) and 54 U.S.C. 100905.**

IV. General Regulations

36 CFR §2.1 – PRESERVATION OF NATURAL, CULTURAL AND ARCHEOLOGICAL RESOURCES

(a)(5) The following conditions are in effect for walking, climbing, entering, ascending, or traversing the listed archeological or cultural resource, monuments, or statues:

- **Hiking or Pedestrian Traffic**

Visitors to Salinas Pueblo Missions National Monument are restricted to the interpretive trail system or walkways at Abo, Gran Quivira, and Quarai.

Determination: *The archaeological sites of Abo, Gran Quivira, and Quarai are unique and fragile resources. The prohibition from leaving the trails/walkways exists to preserve and protect the sites from unintended damage or vandalism.*

(c)(1), (c)(2) The following fruits, nuts, or berries may be gathered by hand for immediate personal use or consumption within the monument's boundaries. Gathering fruits or berries in quantities for preserving and/or canning is prohibited.

- Prickly pear fruit – ½ quart
- Buffalo gourd – ½ quart
- Rose hips – ½ quart
- Wild plum – ½ quart
- Choke cherry – ½ quart
- Apples and other non-native fruits – ½ quart
-

For resource protection, the gathering of mushrooms within the Monument area is prohibited.

Determination: *The unrestricted collection of native fruits, berries, nuts could adversely impact plant propagation and/or wildlife food sources. Fruiting bodies of edible mushrooms (fungi) are not fruits, berries or nuts and therefore collection cannot be authorized by the Superintendent. Park Managers have determined that the limited collection of the above listed fruits, berries, or nuts for immediate personal consumption will not adversely affect park wildlife, the reproductive potential of a plant species or otherwise adversely affect park resources.*

Removal of cones, fungi, fiddle heads is in violation of 36 CFR § 2.1 (a)(1)(ii) "Possessing, destroying, injuring, defacing, removing, digging, or disturbing from its natural state plants or the parts or products thereof." Limited collection of fruits, berries, or nuts is exempt from this restriction because the CFR provides Superintendents an avenue for permitting such activity and park managers have determined that collection of these items is not detrimental to future populations.

36 CFR §2.2 – WILDLIFE PROTECTION

(a)(1) Tracking wounded wildlife into the Monument, which was lawfully wounded outside of Monument boundaries, is prohibited unless accompanied by a commissioned law enforcement official.

Determination: *Public safety is paramount. The law enforcement official handling the case may terminate the search if the animal is not located within a reasonable amount of time, as determined by them. Call the Visitor Center at 505-847-2585.*

(a)(2) The calling of wildlife, including artificial calls or recording devices is prohibited within the Monument.

Determination: *Intentional disturbing of wildlife may adversely affect wildlife behavior (i.e. breeding and mating rituals, feeding habits, travel patterns/routes) possibly causing stressful and/or disruptive conditions for wildlife. Salinas Pueblo Missions National Monument is mandated to preserve and protect the wildlife populations. Intentional disturbance by humans directly conflicts with this mandate. Using calls can cause wildlife to leave foraging and mating areas and attract them to roads where they are more likely to become injured or killed.*

(d) The transporting of lawfully taken wildlife through the Monument is permitted under the following conditions and procedures:

- Persons transporting will have in their possession a valid State hunting license.
- Animal carcasses will display a valid NM State game tag that is properly completed.
- Animal carcasses will be subject to inspection at any time by an authorized person.

Determination: *The monument does not wish to impede those hunting legally nor impede transportation of legally taken game. The transportation of game through the monument, which is closed to hunting, could cause confusion with the monument's hunting regulation. State of New Mexico officials are authorized to check hunters transporting game to ensure wildlife was not taken illegally within the monument boundaries. The monument does not have staff to handle review of licenses and tags. Monument staff will contact state game and fish officials.*

(e) Viewing wildlife by artificial light (spotlighting, including redirection of vehicle headlights) is prohibited Monument-wide.

Note: Night vision devices are not artificial lights, however, infrared lighting/beams are allowed.

Determination: *The viewing of wildlife at night with the use of artificial lights temporarily blinds animals, which causes them to become unnatural prey for predators or poachers.*

36 CFR §2.4 – WEAPONS, TRAPS, AND NETS

(d) A special use permit signed by the Superintendent or designee is required to transport weapons, traps, or nets across park lands to access Forest Service, BLM, State or private lands.

Firearm means a loaded or unloaded pistol, rifle, shotgun, or other weapon, which is designed to, or may be readily converted to expel a projectile by the ignition of a propellant.

Weapon means a firearm, compressed gas or spring-powered pistol or rifle, bow and arrow, crossbow, blowgun, spear gun, hand-thrown spear, slingshot, irritant gas device, explosive device, or any other implement designed to discharge missiles, and includes a weapon the possession of which is prohibited under the laws of the State in which the park area or portion thereof is located.

- The carriage of firearms within the boundaries of Salinas Pueblo Missions National Monument is allowed pursuant to New Mexico State law.
- The actual **USE** of firearms within the Monument is **PROHIBITED**. Use includes aiming, sighting, or using a scope to view wildlife.
- Firearms are prohibited in all federal facilities.
- In the State of New Mexico, you must be 19 years of age to carry a firearm “open carry” and must be 21 years of age to obtain a Concealed Weapons permit and “carry concealed.”
- All other weapons, traps and nets remain prohibited to possess or use in the Monument.

Determination: *As of February 22, 2010, federal law changed to allow the carriage of firearms in National Parks and Monuments pursuant to state law. While that section of the CFR has changed, it remains prohibited to use a firearm within NPS boundaries. (Use of a firearm includes, pointing, looking through an optic mounted on the firearm, display or brandishing, and the actual firing of the weapon.).*

36 CFR §2.10 – CAMPING AND FOOD STORAGE

(a) The sites and areas listed below have been designated for camping activities as noted:

Camping is prohibited at Salinas Pueblo Missions National Monument.

Determination: There are no public camping areas in Salinas Pueblo Missions National Monument.

36 CFR §2.11 – PICNICKING

Picnicking is allowed in the following areas:

- Abo picnic area.
- Quarai picnic area.
- Gran Quivira picnic area.
- Mountainair headquarters fountain area.

Determination: Picnicking is limited to these areas to better protect the fragile resources in the monument.

36 CFR §2.13 – FIRES

(a)(1) Conditions on Lighting or Maintaining a Fire

A fire may be ignited and maintained only by using fuel sources designed and commonly used for warmth or the preparation of food, such as charcoal briquettes or natural firewood.

Lighting or maintaining a fire with other materials including, but not limited to, flammable liquids, garbage, fireworks, plastics, aerosol canisters, batteries, or other manufactured or synthetic materials, is prohibited.

The following designated areas and/or receptacles are relevant to these conditions:

- Self-contained cooking fires may be used but only in designated picnic areas.

Determination: This action is necessary for the maintenance of public health and safety, protection of environmental or scenic values, protection of natural or cultural resources, and the implementation of management responsibilities. Materials other than approved combustibles – especially fire accelerants and substances prone to wind transport or explosion – creates serious risks when used to light or maintain fires. These combustibles can ignite or spread wildfires that directly threaten people and valuable resources and assets. The burning of manufactured or synthetic materials can contribute to air pollution, contaminate soil and water, and be toxic to humans and the environment. Less restrictive measures, such as an education campaign informing visitors of the risks of using certain materials to light or maintain a fire, would not be commensurate with the substantial risks associated with those activities and could lead to adverse outcomes that might be prevented by establishing an enforceable condition.

36 CFR §2.14 – SANITATION AND REFUSE

(a)(2) The use of government refuse receptacles or facilities for dumping household, commercial, or industrial refuse, brought as such from private or municipal property is not allowed.

Determination: Only waste generated while visiting Salinas Pueblo Missions National Monument may be placed in government receptacles. *Refuse containers are placed throughout the Monument to service the visitor. Household waste from outside the Monument taxes the capacity of trash receptacles and adds to the cost of waste removal.*

36 CFR §2.15 – PETS

(a) The following are prohibited:

- Possessing a pet in a public building, public transportation vehicle, or any structure or area closed to the possession of pets by the superintendent. This subparagraph shall not apply to service animals such as guide dogs accompanying visually impaired persons or hearing-impaired persons. “Comfort animals” do not qualify as a service animal.
- Pets in these areas must be always under physical control with a leash no longer than 6 feet.
- Search and rescue animals which are involved in an active search and rescue within the boundaries of the monument, or training within monument boundaries approved by the Superintendent, are allowed with their handlers.

(a)(1) Pets are permitted only in the following areas:

- Interpretive Trail System or Walkway at Abo, Gran Quivira, and Quarai.
- Picnic areas at Abo, Gran Quivira, Quarai, and Headquarters.

(a)(3) Pets must not be left tied up unattended.

(a)(5) Pet excrement must be disposed of in accordance with the following conditions:

- Pet excrement will be removed and disposed of by the person(s) responsible for the care of the animal. Pet excrement must be collected and disposed of in sealed containers or bags and placed in designated trash receptacles.

(d) Pets running at large are considered a hazard to the public and will be controlled. Unconstrained pets may be turned over to Torrance or Socorro County Animal Control.

(e) Pets may be kept by Residents in Park Housing under the following conditions:

- Per the established policy as defined in the housing policy.

Determination: *These regulations are not intended to restrict pets from the monument but rather to enhance the natural experience of all visitors. Pet excrement contributes to the sanitation issues in visitor use areas and may impact public health and safety. During warm temperatures, pets have been left unattended and tied to objects in visitor center parking areas. Unattended pets can be public safety hazards (i.e. barking or biting other visitors). We recommend that a member of the group stay with the pet while the rest of the group sees the exhibits in the visitor centers. Keeping a pet in an unattended vehicle during high temperatures can result in the death of the animal. Specially trained service dogs fall under provisions of the Americans with Disabilities Act (ADA) and are permitted to accompany people with disabilities in all areas where members of the public are allowed to go.*

Note: *Leaving pets in vehicles during the summer months can be dangerous to pet health due to the heat.*

36 CFR §2.16 – HORSES AND PACK ANIMALS

(a) The following animals are designated as pack animals for purposes of transporting equipment:

- “Pack animal” means horses, burros, mules, or other hooved mammals when designated as pack animals by the Superintendent.

(b) The use of horses or pack animals is not allowed on the following trails, routes, or areas:

- All trails in the Monument are closed to stock use of any kind.

(g) Other conditions concerning the use of horses or pack animals:

- The use of horses for removal of trespass cattle may be allowed by the Superintendent on a case-by-case basis and must be approved prior to any herding activities.

Determination: Trails in Salinas Pueblo Missions are designed for pedestrian use only and would be damaged using stock. The use of horses off trail may be allowed only for the removal of trespass cattle if deemed appropriate by the Superintendent.

36 CFR §2.19 – WINTER ACTIVITIES

(a) The following Monument roads and/or parking areas open to motor vehicle traffic may be used for skiing, snowshoeing, ice skating, inner tubing, tobogganing, and similar winter activities under the conditions noted:

- Winter activities such as Skiing, snowshoeing, ice skating, sledding are prohibited at all sites within the monument.

Determination: The trails in Salinas Pueblo Missions are designed for pedestrian use only and are shoveled during the winter. Off trail areas remain closed for the protection of the resources.

36 CFR §2.20 – SKATING, SKATEBOARDS, AND SIMILAR DEVICES

Using roller skates, skateboards, roller ski’s, coasting vehicles, or similar devices is prohibited, except in designated areas.

- To provide for visitor safety, no publicly accessible areas are designated for this activity.

Determination: The above activities generally take place on paved roads and parking areas. These areas are small and not conducive to the use of skates, skateboards, hover boards, or other personal transportation devices as they would conflict with the vehicles and pedestrians in these areas.

36 CFR §2.21 – SMOKING

(a) The following areas, structures or facilities are closed to smoking:

- Smoking is allowed in the designated smoking areas during times when parkwide fire restrictions allow. Smoking is prohibited in all public use and administrative buildings and facilities, as well as within 25 feet of a public building.
- Smoking is prohibited on all park trails.

Determination: Smoking is prohibited on park trails to protect Monument resources, reduce the risk of fire, or prevent conflicts among visitor use activities. Electronic cigarettes are included in the above restrictions. It is NPS policy that public use and administrative facilities be smoke-free.

Designated smoking areas include parking areas and areas identified as First Amendment activity zones.

36 CFR §2.22 – PROPERTY

(a)(2) Property may be left unattended for periods longer than 24 hours under the following conditions:

- *With permission of the Superintendent upon approval of a permit or special use authorization.*

Determination: *The purpose of this restriction is to protect the natural, cultural, and archaeological resources from damage from geocaching. Motor vehicles are prohibited from using visitor center parking lots without a parking permit due to physical security concerns. Broken down vehicles need to be reported to park rangers. Permits and special use authorizations can be obtained through the Chief of Interpretation's Office/Special Use Coordinator at (505) 581-6922.*

36 CFR §2.35 – ALCOHOLIC BEVERAGES AND CONTROLLED SUBSTANCES

(a)(3)(i) **The possession or consumption of an alcoholic beverage and/or the possession of a bottle, can, or other receptacle containing an alcoholic beverage that is open or that has been opened or whose seal is broken or the contents of which has been partially removed is prohibited in all public and administrative areas.**

- The superintendent may authorize the possession and consumption of alcoholic beverages as part of a special use event.

Determination: *Closing these areas to the consumption and possession of alcoholic beverages and controlled substances is for public safety concerns and the orderly management of the facilities.*

36 CFR §2.62 – MEMORIALIZATION

(b) **The scattering of human ashes from cremation is prohibited, except pursuant to the terms and conditions of a permit or in designated areas:**

- Scattering of human ashes from cremation is prohibited in Salinas Pueblos Missions National Monument.

Determination: *Salinas Pueblo Missions National Monument was established to protect and interpret the unique cultural resources it contains. The scattering of human remains has the potential to alter the cultural and historic record of the sites.*

36 CFR §4.21 – SPEED LIMITS

(b) **The following speed limits are established for the routes/roads indicated:**

- Unless otherwise designated, the speed limit is 15 mph.

Determination: *Monument speed limits are set at speed which allow for the safety of large numbers of wildlife along the roads as well as high volume pedestrian use. Visitors and residents should expect a lower speed than the surrounding highways.*

36 CFR §4.30 – BICYCLES

(a) Bicycle use is only permitted on paved roads and parking areas.

- *The use of bicycles on hiking trails and in off-road areas is prohibited.*
- *The term “e-bike” means a two- or three-wheeled cycle with fully operable pedals and an electric motor of less than 750 watts (1 h.p.).*
 - *E-bikes are allowed in Salinas Pueblo Missions National Monument where traditional bicycles are allowed.*
 - *E-bikes are prohibited where traditional bicycles are prohibited. Except where use of motor vehicles by the public is allowed, using the electric motor to move an e-bike without pedaling is prohibited.*
 - *A person operating an e-bike is subject to the following sections of 36 CFR part 4 that apply to the use of traditional bicycles: sections 4.12, 4.13, 4.20, 4.21, 4.22, 4.23, and 4.30(h)(2)-(5).*
 - *Except as specified in this Compendium, the use of an e-bike within Salinas Pueblo Missions National Monument is governed by State law, which is adopted and made a part of this Compendium. Any violation of State law adopted by this paragraph is prohibited.*

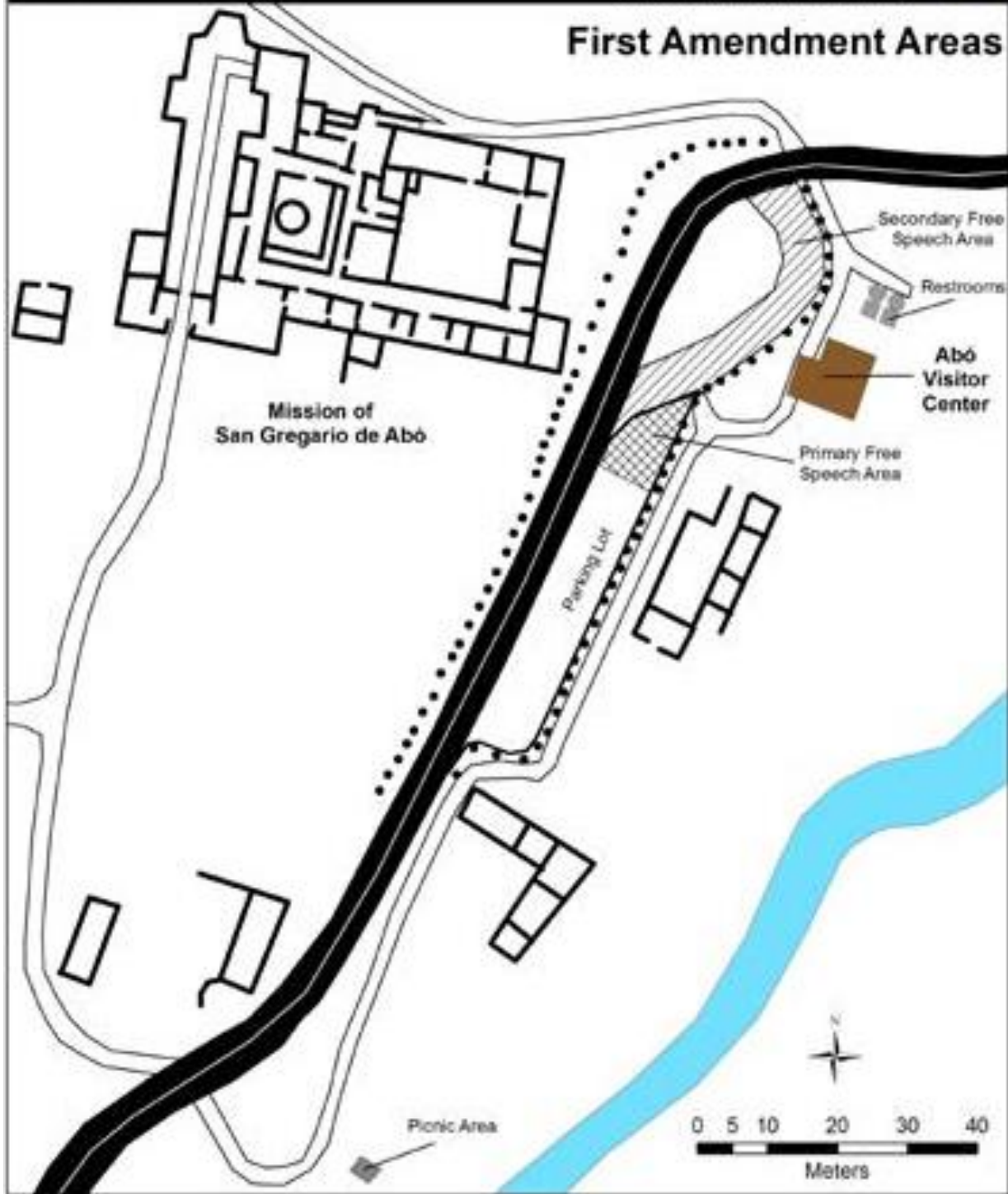
Note: *New Mexico State law requires bicycles to stay to the right and ride single file. Monument roads, as well as adjoining state roads, are very narrow with no shoulder. Riders should ride defensively and be always aware of traffic.*

Determination: *Bicycle use, including e-bikes, is permitted on all roads open to public motor vehicle use. Bicycles and e-bikes are not permitted on trails or roads closed to the public.*

Appendix A
First Amendment Area Maps



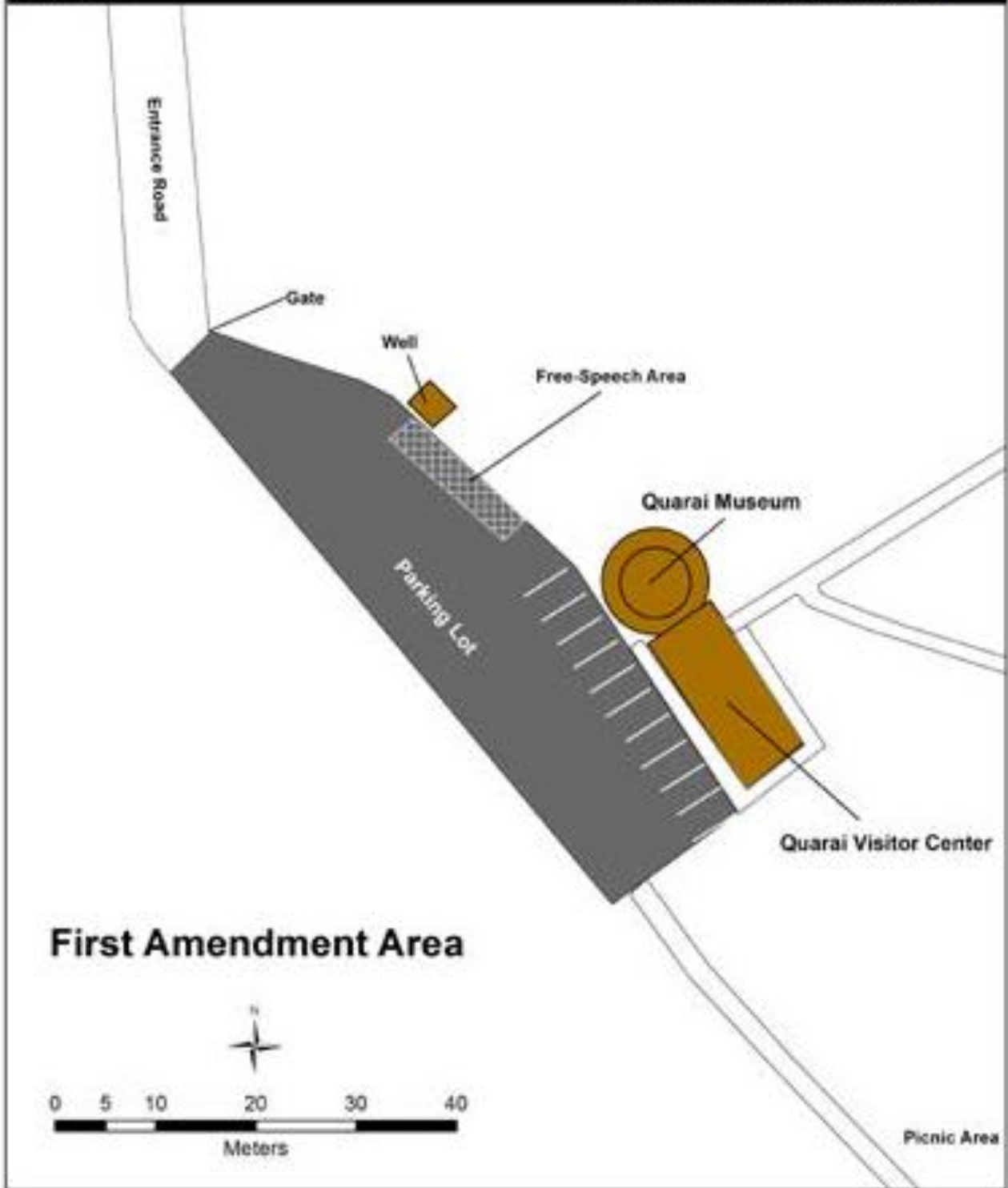
First Amendment Areas

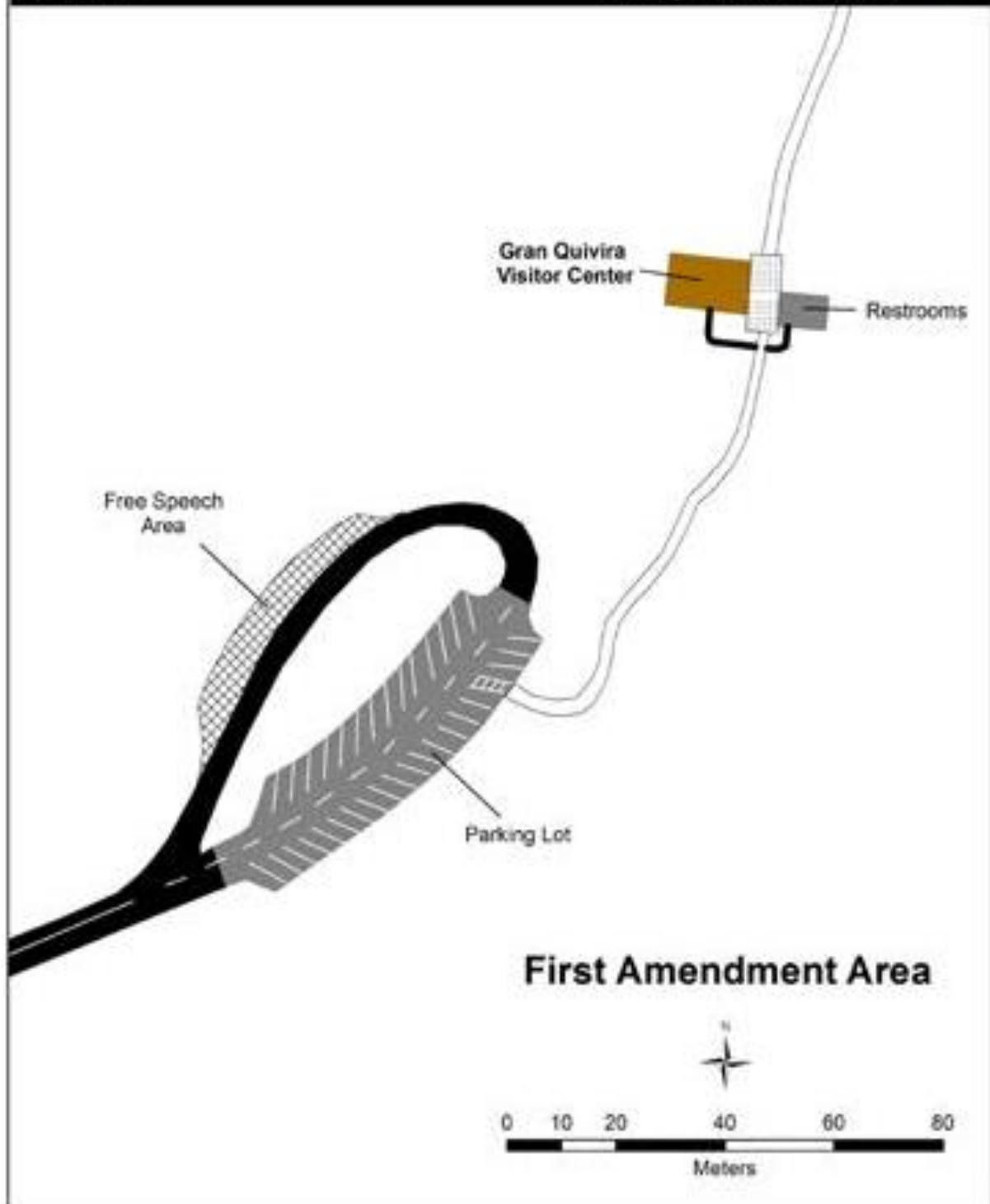


Salinas Pueblo Missions National Monument
Quarai Unit

New Mexico

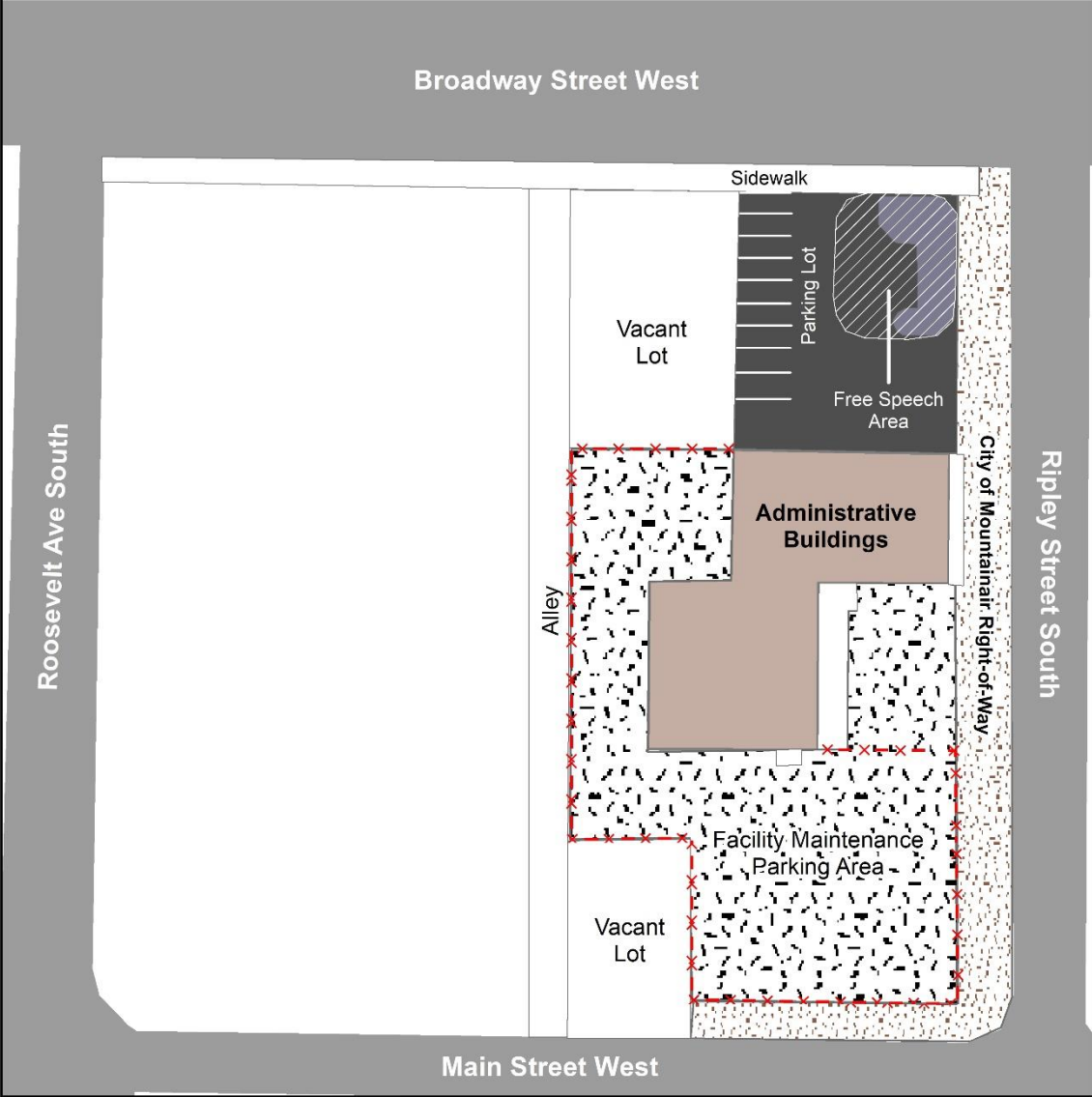
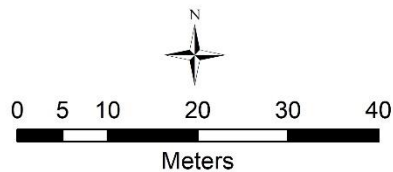
National Park Service
U.S. Department of the Interior







First Amendment Area

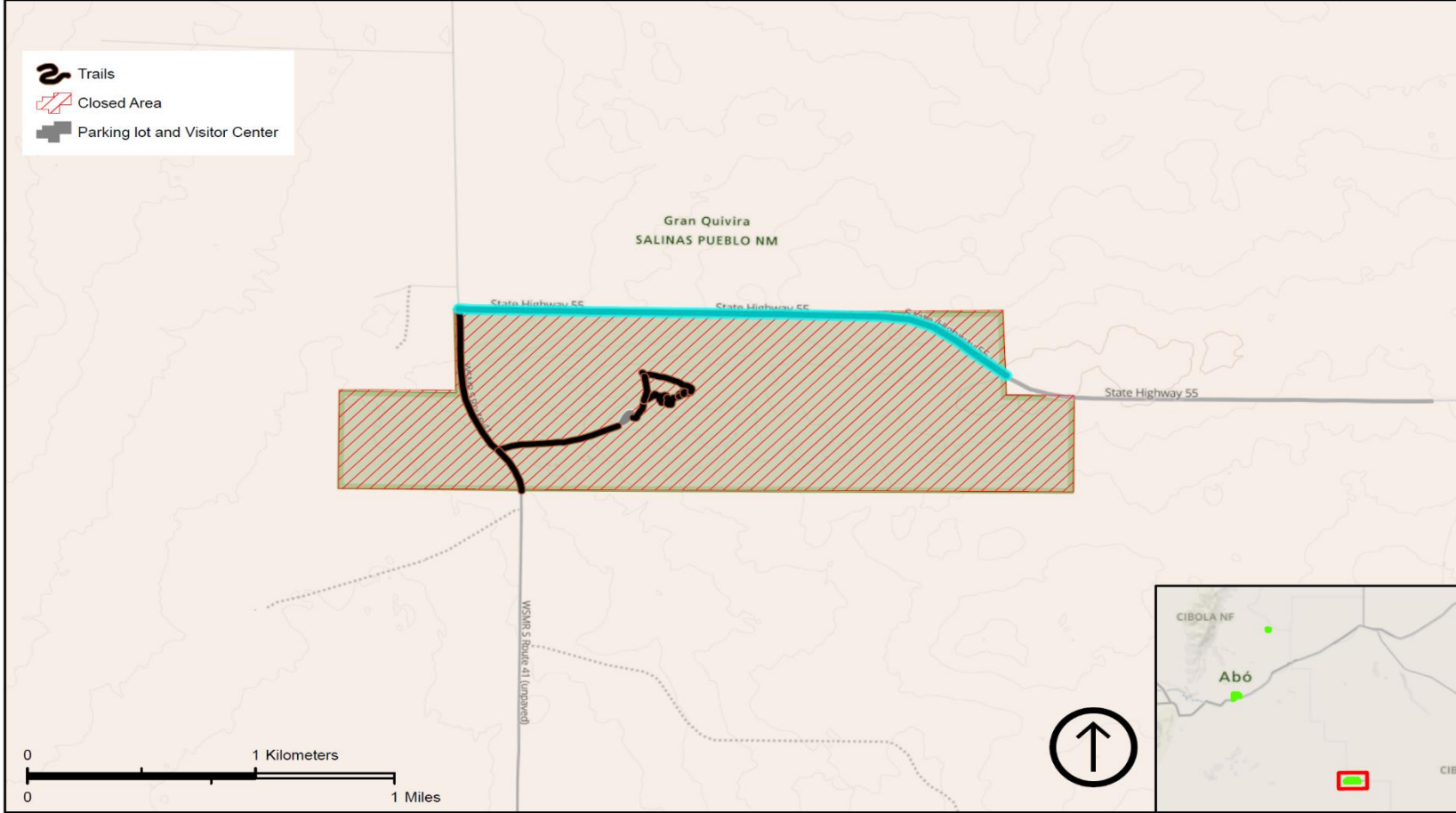


Appendix B
Closed Area Maps

Closed Area - Gran Quivira

Salinas Pueblo Missions National Monument, Gran Quivira Unit, Mountainair, New Mexico

Intermountain Region
National Park Service
U.S. Department of the Interior



T 1N, R 8E, Sect 34 & 35
T 1S, R 8E, Sect 2, 3 & 4
Gran Quivira
Torrance County, New Mexico

Scale: 1:24,000

Produced by K.C. Bello

March 2024

Data Sources: ESRI Roads, NPS Park Data

Project Folder Location
S:\Management\Management Plans\Superintendent's Compendium\2024\Superintendents Compendium

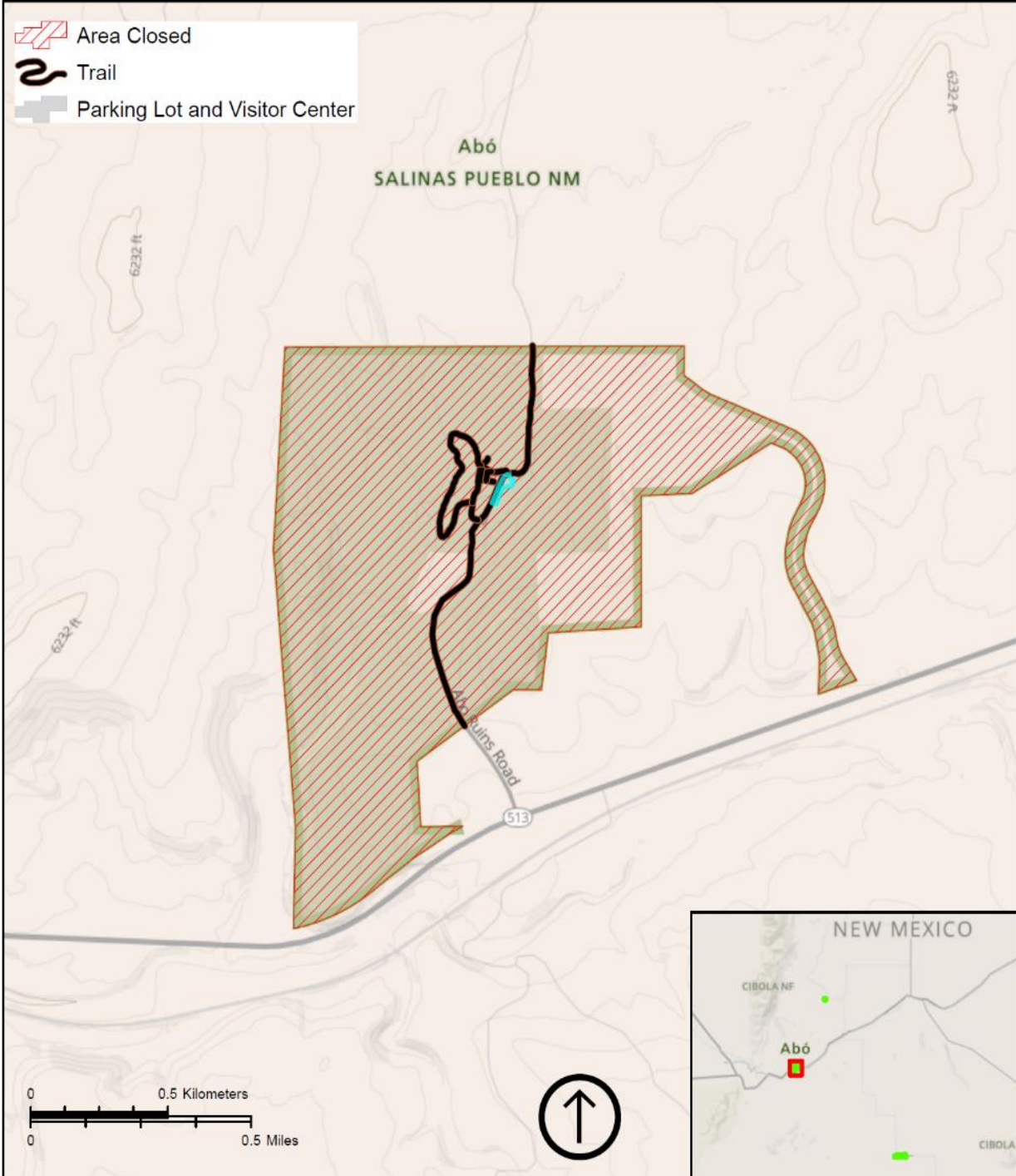
Closed Area - Abo

Salinas Pueblo Missions National Monument
Abo Unit, Mountainair, New Mexico

Intermountain Region
National Park Service
U.S. Department of the Interior



- Area Closed
- Trail
- Parking Lot and Visitor Center



T 3N, R 5E, Sect 25 & 36
Abo
Torrance County, New Mexico

Scale: 1:18,000

Produced by Keegan Colt Bello

March 2024

Data Sources: ESRI Roads, NPS Park Data

Project Folder Location
S:\Management\Management Plans\Superintendent's Compendium\2024\Superintendents Compendium

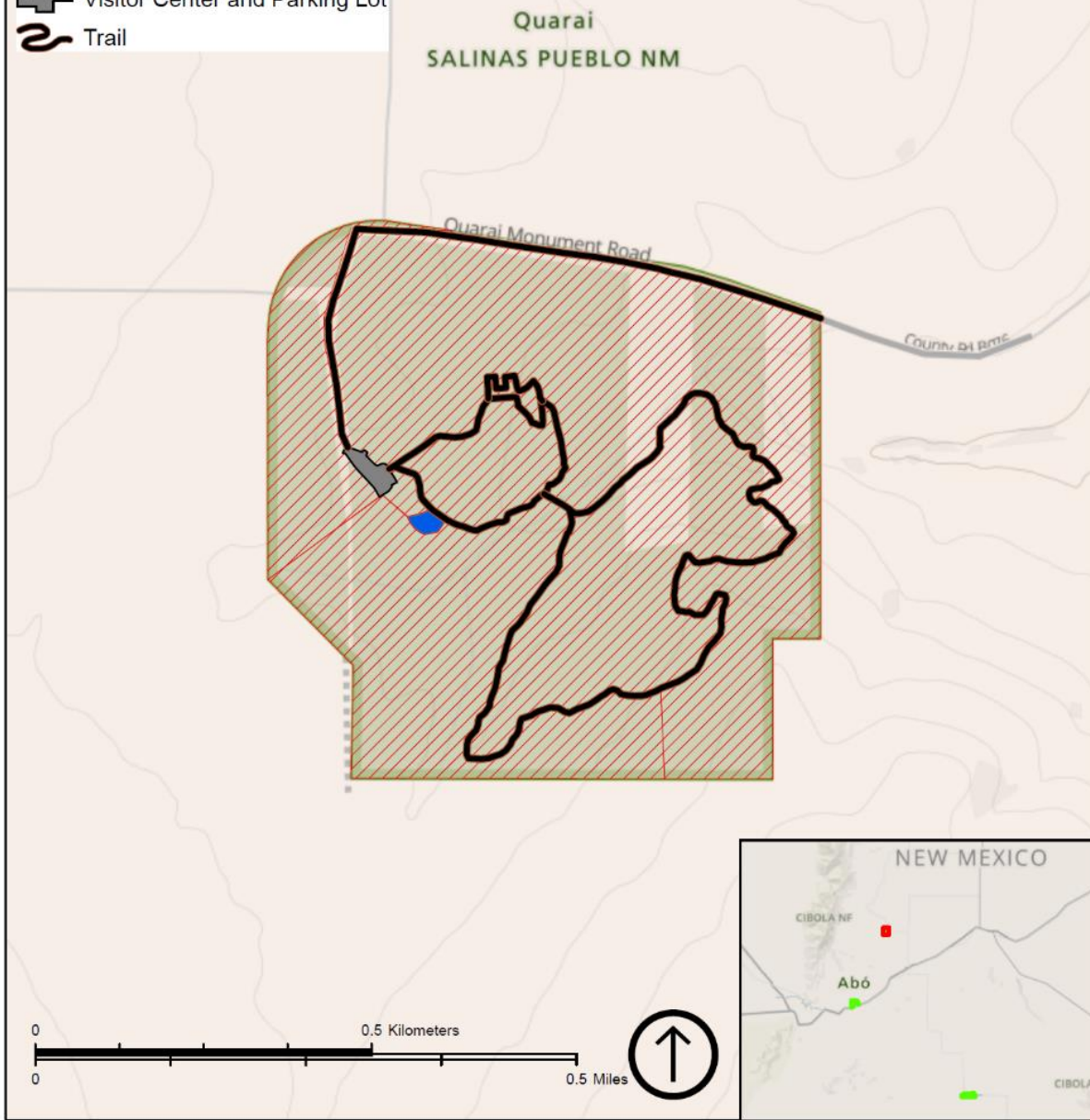
Closed Area - Quarai Unit

Salinas Pueblo Missions National Monument
Quarai Unit, Mountainair, New Mexico

Intermountain Region
National Park Service
U.S. Department of the Interior



- Closed Area
- Picnic Area
- Visitor Center and Parking Lot
- Trail



T 4N, R 6E, Sect 10
Quarai
Torrance County, New Mexico

Scale: 1:8,000

Produced by Keegan Bello
March 2024
Data Sources: ESRI Roads, NPS Park Data

Project Folder Location
S:\Management\Management Plans\Superintendent's Compendium\2024\Superintendents Compendium