



Santa Fe National Historic Trail

Project Updates - Protection, Development, and Promotion

Expanded Tools to Follow the Trail

Mapping projects often involve long days at archives digging through historic maps or surveyor's notes, rigorous time in the field looking for the trace or swales, and taking GPS points and transforming the points into data.

The outcomes of those independent projects and workshops become more than a line on the paper or screen; the results can be presented in a variety of ways to promote use by the public.

Santa Fe NHT Interactive Maps

The review and field testing portion of the Connect Trails to Parks project to create interactive maps is underway! The wide range of site information currently on Plan Your Visit pages on the Santa Fe NHT website have been combined into one spreadsheet that generates site information to visit or virtually tour the trail.

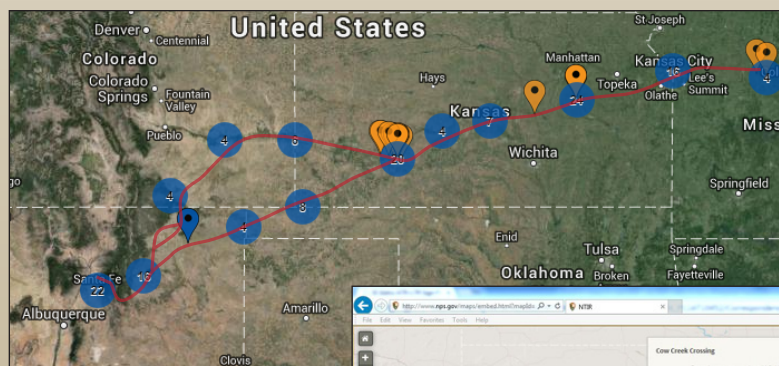
Santa Fe NHT Complete Media Tour

There are now 200 individual sites in the media tour! Stops range from Santa Fe, New Mexico, to Franklin, Missouri. Families traveling the trail to complete the requirements for Junior Wagon Master can use the tour to locate stops and get driving directions.

Even More Signs!

Signs for the Santa Fe Trail Scenic and Historic Byway in Colorado are expected to arrive in mid-September. Bent's Fort Chapter volunteers and Colorado DOT are making great progress on installations across their four counties. Three trail original route signs for Raytown, Missouri, have been delivered to the city.

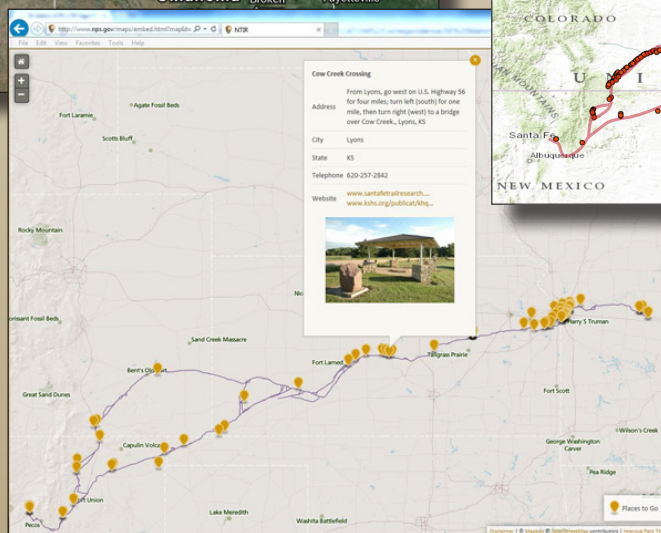
The Oregon-California Trail Association is purchasing a three trail site entrance sign for the Wieduwilt Swales (at 85th Street and South Manchester Avenue) in Kansas City to accompany a newly installed wayside exhibit. Eight site identification signs are in fabrication for the Quivira Chapter area.



Above
There are more than 150 individual site locations uploaded into the Santa Fe National Historic Trail Media Tour. Each site has one stop number for directions and one for the story at the site.

Visit: myoncell.mobi

Choose NPS Tours and scroll down to Santa Fe NHT.



Above
This distribution map shows installed signs along the trail.

Left
The Plan Your Visit, Passport Program, and Certified Sites content on the Santa Fe NHT website has been included in the interactive maps project.



Introducing...the New NTIR Web Page!

The website is live and content is being uploaded weekly. This new tool better communicates our mission and services to our partners along the nine distinct national historic trails and the historic road preservation program NTIR administers. The home page summarizes how we can help you protect, develop, and promote national historic trails.

Each NTIR team has a feature page that describes the skills or expertise they provide with links to more information. The website will be the central information hub for the wide range of partners who manage lands or stories along these historic routes.

Check it out! www.nps.gov/ntir

Certification



The Rawlinson-Terwilliger Home in Council Grove, Kansas, was certified on August 8—it is the first new certification partnership in 2-1/2 years! Kenneth McClintock completed a lot of research in order to justify the new certification—and he created great publicity for the event.

The Rawlinson-Terwilliger Home was the last house Santa Fe-bound freighters and travelers passed leaving Council Grove as late as 1863, and, conversely, being the first house they saw approaching from the West.

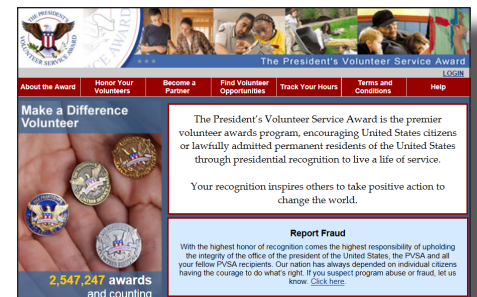
National Register



The Santa Fe Trail—West San Jose Section is located adjacent to the small village of San Jose in San Miguel County, New Mexico. This segment is located at the southern extent of the Sangre de Cristo Mountains, between Santa Fe and Las Vegas, New Mexico.

Newly added to the National Register, the wishbone-shaped trail forms north and south routes, the only detectable trail segments that once extended around the north and south sides of the village to the ford in the Pecos River.

Presidential Service Awards



The President's Volunteer Service Award is recognition of volunteers who live a life of service. NTIR is now a Certifying Organization—to learn more, choose "About the Award" at the website below.

presidentalserviceawards.gov

This is a very special way to say *thank you* for volunteering.

The National Park Service cares for special places saved by the American people so that all may experience our heritage.



Comments? Write to:
Carol S. Clark, Interpretive Specialist
National Trails Intermountain Region
P.O. Box 728, Santa Fe, NM 87504
carol_s_clark@nps.gov

NPS 09/2014