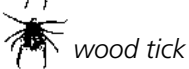


## Enjoy the River Safely

- Wear your life jacket. Make sure your child wears a life jacket!
- Use alcohol responsibly. Many river accidents involve alcohol.
- Wear sunscreen, sunglasses, and a hat to prevent sunburn. Water reflects the rays of the sun giving you a double dose of ultraviolet light.
- Avoid trees that have fallen in the river. They can catch and overturn your vessel.
- Don't jump from cliffs, bridges, or trees.
- Protect your feet with river shoes, water sandals, or old shoes. Fish hooks, glass, and rocks can injure your feet.
- Bring your own drinking water. Treat river water before drinking to avoid giardiasis, a serious stomach irritant.
- Blastomycosis is a fungal infection that is commonly contracted by dogs and sometimes by humans. Avoid digging in moist soils.
- Check for ticks often and know the symptoms of Lyme disease. Deer ticks are common along the Riverway and some carry the bacteria that cause the disease.
- Know how to identify poison ivy and avoid contact.



deer tick



wood tick

poison



## National Park Service St. Croix National Scenic Riverway



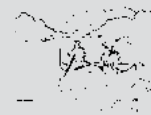
### St. Croix River Map 7: Highway 70 to Highway 8



When completed in 1891, Nevers Dam was said to be the largest pile-driven dam in the world. It was built to give lumber companies better control over the millions of logs that floated down the St. Croix every spring. The 14-mile long holding pen of water behind the dam helped prevent the occurrence of logjams downstream.

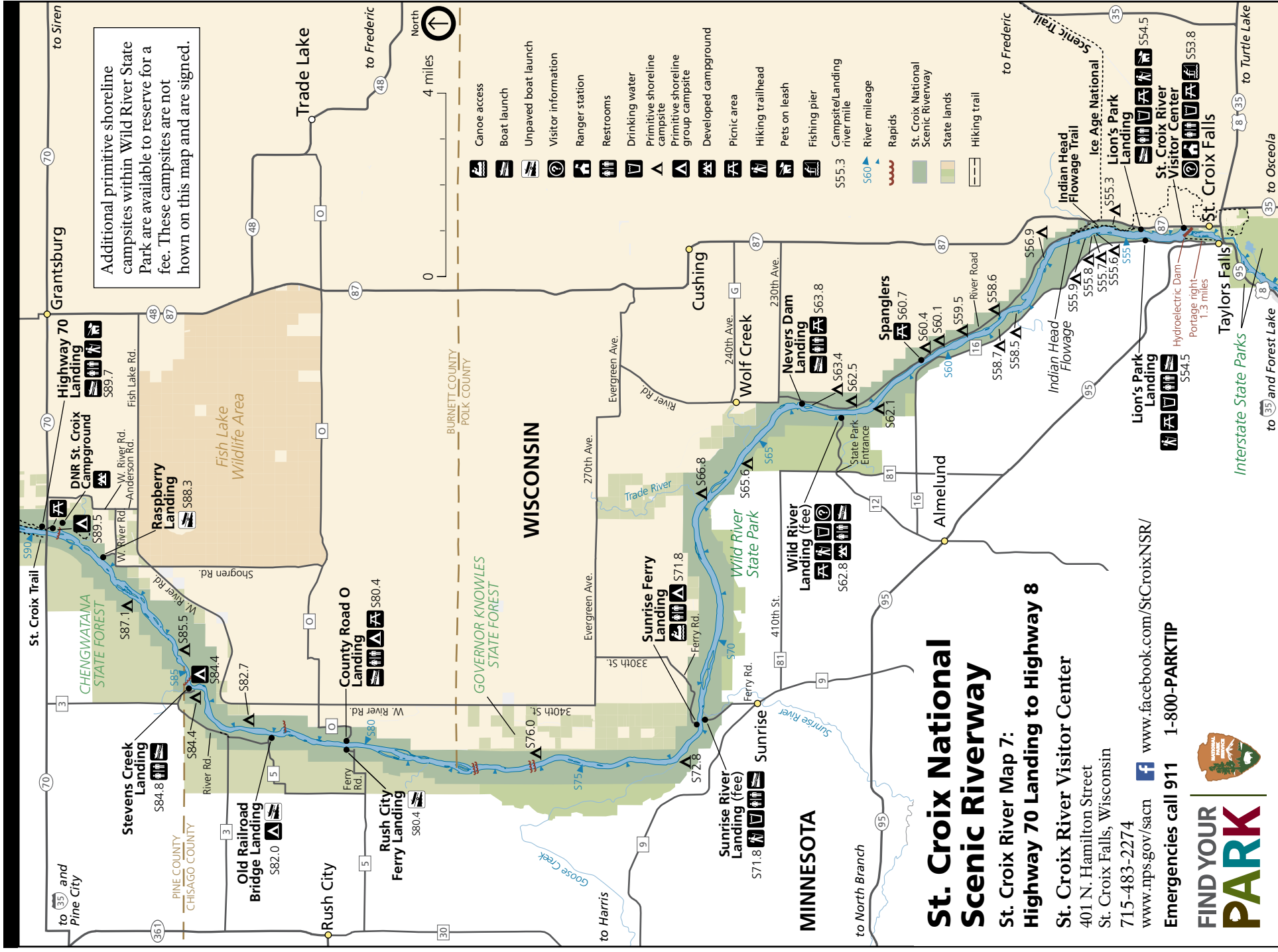
With the end of log drives in the early 1900s, Nevers Dam supported the new hydro-electric dam downstream at St. Croix Falls. Spring floods in 1954 damaged Nevers Dam and it was removed a year later. A narrowing of the river and a few tiny islands can still be seen today.

*Discover clean water, lush landscapes, and quiet solitude along the St. Croix National Scenic Riverway, a national park that with your help protects over 200 miles of wild and scenic river corridor.*



## Top Riverway Regulations

- Approved life jackets for each person are required on your vessel. Children under 13 are required to wear a life jacket.
- Please do not bring glass containers to the Riverway. Broken glass cuts bare feet.
- Disposing human waste into the river is prohibited.
- Jumping from cliffs, bridges, or trees is illegal and dangerous.
- Open campfires are allowed only in metal fire rings. Campfires must be out and cold before you leave the area.
- The cutting of live vegetation is strictly prohibited. Dead and down wood may be collected for campfires from shoreline areas, but not from islands.
- To prevent the spread of emerald ash borer, possession of firewood that originates more than 25 miles from the location where it will be used is prohibited.
- Individual campsites accommodate a maximum of 8 people and 3 tents. Group sites accommodate a maximum of 16 people and 6 tents.
- Littering is not allowed. Carry out all trash.
- It is illegal to shoot or possess fireworks on lands and waters within the Riverway.
- Collecting freshwater mussels, mussel shells, wildflowers, and historical artifacts is prohibited.
- Quiet hours are 10:00 pm to 6:00 am.



Additional primitive shoreline campsites within Wild River State Park are available to reserve for a fee. These campsites are not shown on this map and are signed.

# St. Croix National Scenic Riverway

## St. Croix River Map 7: Highway 70 Landing to Highway 8

**St. Croix River Visitor Center**  
 401 N. Hamilton Street  
 St. Croix Falls, Wisconsin  
 715-483-2274

[www.nps.gov/sacn](http://www.nps.gov/sacn) [www.facebook.com/StCroixNSR/](http://www.facebook.com/StCroixNSR/)  
**Emergencies call 911 1-800-PARKTIP**

