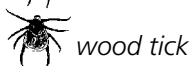


Enjoy the River Safely

- Wear your life jacket. Make sure your child wears a life jacket!
- Use alcohol responsibly. Many river accidents involve alcohol.
- Wear sunscreen, sunglasses, and a hat to prevent sunburn. Water reflects the rays of the sun giving you a double dose of ultraviolet light.
- Avoid trees that have fallen in the river. They can catch and overturn your vessel.
- Don't jump from cliffs, bridges, or trees.
- Protect your feet with river shoes, water sandals, or old shoes. Fish hooks, glass, and rocks can injure your feet.
- Bring your own drinking water. Treat river water before drinking to avoid giardiasis, a serious stomach irritant.
- Blastomycosis is a fungal infection that is commonly contracted by dogs and sometimes by humans. Avoid digging in moist soils.
- Check for ticks often and know the symptoms of Lyme disease. Deer ticks are common along the Riverway and some carry the bacteria that cause the disease.
- Know how to identify poison ivy and avoid contact.



deer tick



wood tick



poison ivy

National Park Service St. Croix National Scenic Riverway



St. Croix River Map 5: Riverside Landing to Sand Creek Landing



Bonjour! As you paddle down the river you can almost hear the hardy voices of the voyageurs that once traveled the waterways of the St. Croix River Valley. These men, part of an international trade network that included American Indians and European fur companies, sought beaver, but also otter, bear, and other furs.

In exchange for trade goods like metal knives, kettles, steel flints for starting fires, guns and ammunition, and woolen blankets, the Ojibwe and Dakota supplied pelts. After a winter of trading at local posts like Forts Folle Avoine on the Yellow River, voyageurs packed large canoes with furs that made their way to Europe, becoming hats and other clothing.

Discover clean water, lush landscapes, and quiet solitude along the St. Croix National Scenic Riverway, a national park that with your help protects 255 miles of wild and scenic river corridor.



Top Riverway Regulations

- Approved life jackets for each person are required on your vessel. Children under 13 are required to wear a life jacket.
- Please do not bring glass containers to the Riverway. Broken glass cuts bare feet.
- Disposing human waste into the river is prohibited.
- Jumping from cliffs, bridges, or trees is illegal and dangerous.
- Open campfires are allowed only in metal fire rings. Campfires must be out and cold before you leave the area.
- The cutting of live vegetation is strictly prohibited. Dead and down wood may be collected for campfires from shoreline areas, but not from islands.
- Possession of firewood that originates more than 10 miles from the Riverway is prohibited.
- Individual campsites accommodate a maximum of 8 people and 3 tents. Group sites accommodate a maximum of 16 people and 6 tents.
- Littering is not allowed. Carry out all trash.
- It is illegal to shoot or possess fireworks on lands and waters within the Riverway.
- Collecting freshwater mussels, mussel shells, wildflowers, and historical artifacts is prohibited.
- Quiet hours are 10:00 pm to 6:00 am.



St. Croix National Scenic Riverway

St. Croix River Map 5: Riverside Landing to Sand Creek Landing

Namekagon River Visitor Center

Highway 63, half mile east of Highway 53

Trego, Wisconsin

715-635-8346

www.nps.gov/sacn, follow us on 

Emergencies call 911

