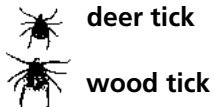


## Enjoy the River Safely

- Wear your life jacket. Make sure your child wears a life jacket!
- Use alcohol responsibly. Many river accidents involve alcohol.
- Wear sunscreen, sunglasses, and a hat to prevent sunburn. Water reflects the rays of the sun giving you a double dose of ultraviolet light.
- Avoid trees that have fallen in the river. They can catch and overturn your vessel.
- Don't jump from cliffs, bridges, or trees.
- Protect your feet with river shoes, water sandals, or old shoes. Fish hooks, glass, and rocks can injure your feet.
- Bring your own drinking water. Treat river water before drinking to avoid giardiasis, a serious stomach irritant.
- Blastomycosis is a fungal infection that is commonly contracted by dogs and sometimes by humans. Avoid digging in moist soils.
- Check for ticks often and know the symptoms of Lyme disease. Deer ticks are common along the Riverway and some carry the bacteria that cause the disease.
- Know how to identify poison ivy and avoid contact.



deer tick

wood tick

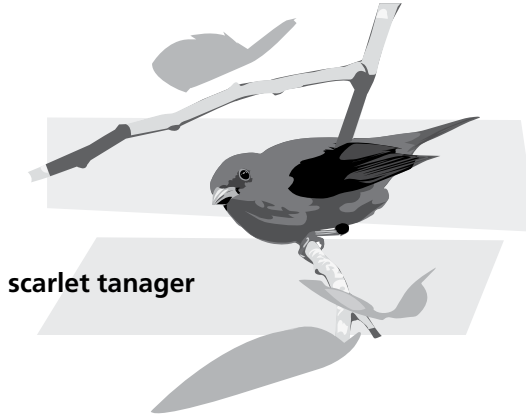


poison ivy

## National Park Service St. Croix National Scenic Riverway



### Namekagon River Map 2: Hayward Landing to Trego



scarlet tanager

*The St. Croix and Namekagon rivers are migration corridors and nesting areas for many species of songbirds.*

#### In This Stretch

- After **Hayward Landing** the river is rocky and narrow. A few miles downstream the river becomes sandy and slow. Water levels are usually good.
- Just downstream from **Stinnett Landing** the river narrows forming a chute.
- As you continue downstream the river quickens with many Class I rapids.
- After **Big Bend Landing** the river widens, slows, and is an easy paddle.
- **Earl Park Landing** is a popular put-in spot for people on tubes on hot summer days.
- Shortly after **Lakeside Road Landing** the river passes under Highway 53, and then there are five miles of slow paddling through the **Trego Flowage** to the **Trego Dam**. (See Map 3 for the complete map of the Trego Flowage.)

## Top Riverway Regulations

- Approved life jackets for each person are required on your vessel. Children under 13 are required to wear a life jacket.
- Please do not bring glass containers to the Riverway. Broken glass cuts bare feet.
- Disposing human waste into the river is prohibited.
- Jumping from cliffs, bridges, or trees is illegal and dangerous.
- Open campfires are allowed only in metal fire rings. Campfires must be out and cold before you leave the area.
- The cutting of live vegetation is strictly prohibited. Dead and down wood may be collected for campfires from shoreline areas, but not from islands.
- To prevent the spread of emerald ash borer, possession of firewood that originates more than 25 miles from the location where it will be used is prohibited.
- Individual campsites accommodate a maximum of 8 people and 3 tents. Group sites accommodate a maximum of 16 people and 6 tents.
- Littering is not allowed. Carry out all trash.
- It is illegal to shoot or possess fireworks on lands and waters within the Riverway.
- Collecting freshwater mussels, mussel shells, wildflowers, and historical artifacts is prohibited.
- Quiet hours are 10:00 pm to 6:00 am.


# St. Croix National Scenic Riverway

## Namekagon River Map 2: Hayward to Trego

### Namekagon River Visitor Center

Highway 63, half mile east of Highway 53  
Trego, Wisconsin

715-635-8346

www.nps.gov/sacn  www.facebook.com/StCroixNSR/

Emergencies call 911 See a problem? 1-800-PARKTIP

**FIND YOUR  
PARK**

