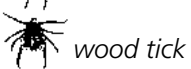


Enjoy the River Safely

- Wear your life jacket. Make sure your child wears a life jacket!
- Use alcohol responsibly. Many river accidents involve alcohol.
- Wear sunscreen, sunglasses, and a hat to prevent sunburn. Water reflects the rays of the sun giving you a double dose of ultraviolet light.
- Avoid trees that have fallen in the river. They can catch and overturn your vessel.
- Don't jump from cliffs, bridges, or trees.
- Protect your feet with river shoes, water sandals, or old shoes. Fish hooks, glass, and rocks can injure your feet.
- Bring your own drinking water. Treat river water before drinking to avoid giardiasis, a serious stomach irritant.
- Blastomycosis is a fungal infection that is commonly contracted by dogs and sometimes by humans. Avoid digging in moist soils.
- Check for ticks often and know the symptoms of Lyme disease. Deer ticks are common along the Riverway and some carry the bacteria that cause the disease.
- Know how to identify poison ivy and avoid contact.



deer tick



wood tick

poison ivy



National Park Service St. Croix National Scenic Riverway



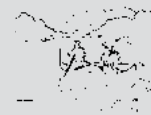
Namekagon River Map 2: Hayward Landing to Trego



great blue heron

As you float the Namekagon River, you will likely encounter the majestic and elegant great blue heron. This blue-gray bird is often seen along the shoreline, where it stalks unsuspecting prey by standing or walking on its long, thin legs against the current. The heron uses its sharp beak to spear fish, frogs, snakes, dragonflies, mice, and other animals and then slides the meal headfirst down its throat. You may also see a heron flying over the river, slowly flapping its six-foot wingspan, neck tucked into an S-shape and legs trailing behind. A memorable sight!

Discover clean water, lush landscapes, and quiet solitude along the St. Croix National Scenic Riverway, a national park that with your help protects over 200 miles of wild and scenic river corridor.



Top Riverway Regulations

- Approved life jackets for each person are required on your vessel. Children under 13 are required to wear a life jacket.
- Please do not bring glass containers to the Riverway. Broken glass cuts bare feet.
- Disposing human waste into the river is prohibited.
- Jumping from cliffs, bridges, or trees is illegal and dangerous.
- Open campfires are allowed only in metal fire rings. Campfires must be out and cold before you leave the area.
- The cutting of live vegetation is strictly prohibited. Dead and down wood may be collected for campfires from shoreline areas, but not from islands.
- To prevent the spread of emerald ash borer, possession of firewood that originates more than 25 miles from the location where it will be used is prohibited.
- Individual campsites accommodate a maximum of 8 people and 3 tents. Group sites accommodate a maximum of 16 people and 6 tents.
- Littering is not allowed. Carry out all trash.
- It is illegal to shoot or possess fireworks on lands and waters within the Riverway.
- Collecting freshwater mussels, mussel shells, wildflowers, and historical artifacts is prohibited.
- Quiet hours are 10:00 pm to 6:00 am.

St. Croix National Scenic Riverway


Namekagon River Map 2: Hayward to Trego

Namekagon River Visitor Center

Highway 63, half mile east of Highway 53

Trego, Wisconsin

715-635-8346

www.nps.gov/sacr  www.facebook.com/StCroixNSR/

Emergencies call 911 1-800-PARKTIP

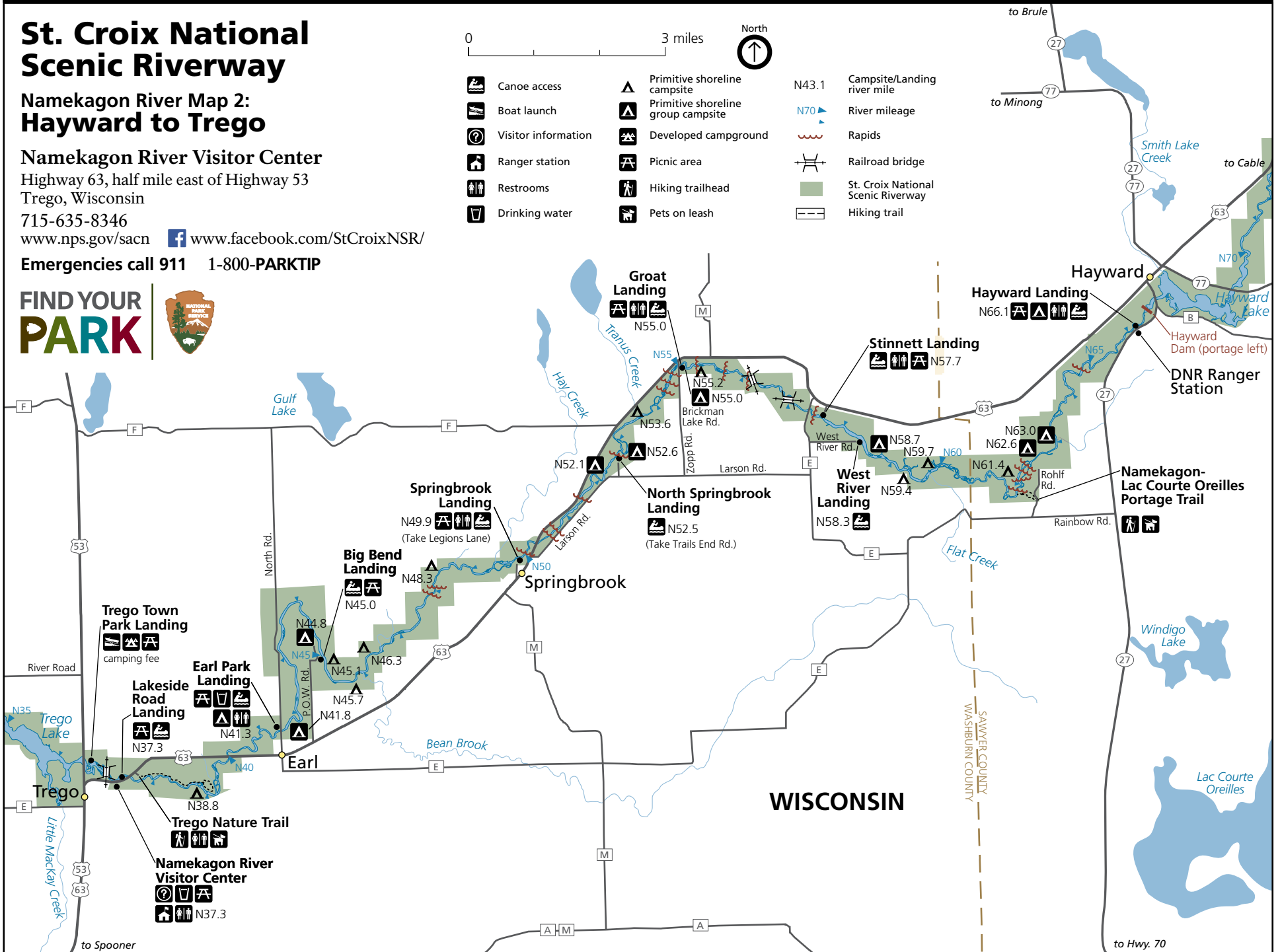
FIND YOUR
PARK



0 3 miles



- | | | |
|---------------------|------------------------------------|------------------------------------|
| Canoe access | Primitive shoreline campsite | N43.1 Campsite/Landing river mile |
| Boat launch | Primitive shoreline group campsite | River mileage |
| Visitor information | Developed campground | Rapids |
| Ranger station | Picnic area | Railroad bridge |
| Restrooms | Hiking trailhead | St. Croix National Scenic Riverway |
| Drinking water | Pets on leash | Hiking trail |



WISCONSIN

SAWYER COUNTY
WASHINGTON COUNTY